

Flight Procedures Cover Page	Task Action: FLIGHT CHECK	Task Type: STAR	Estimated Chart Date: 06/12/2025	APWS Task ID: F0B0FBEBF82424EB4953935F6794AF542	APWS Project ID: E20CA421C56147E792C55461D271C7BC
Procedure: PUMPP TWO ARRIVAL		Enroute: YES	Specialist: Pipkin, Ryan		Agreement Number:
Airport ID: KRSW			Airport City: FORT MYERS		State: FL
Facility ID:	Facility Type:	Flight Inspection Remark Type: New FC Slot			

Procedure Comments:

PROCEDURE DEVELOPED USING ACTIVE DATA.

ADDED TERMINATION FIX TYNEE. ADDED HOLDING AT SRQ/TYNEE.

CLEARs NOTAM FDC 4/4790.

CONTACT JOHN BORDY - 405-954-0980

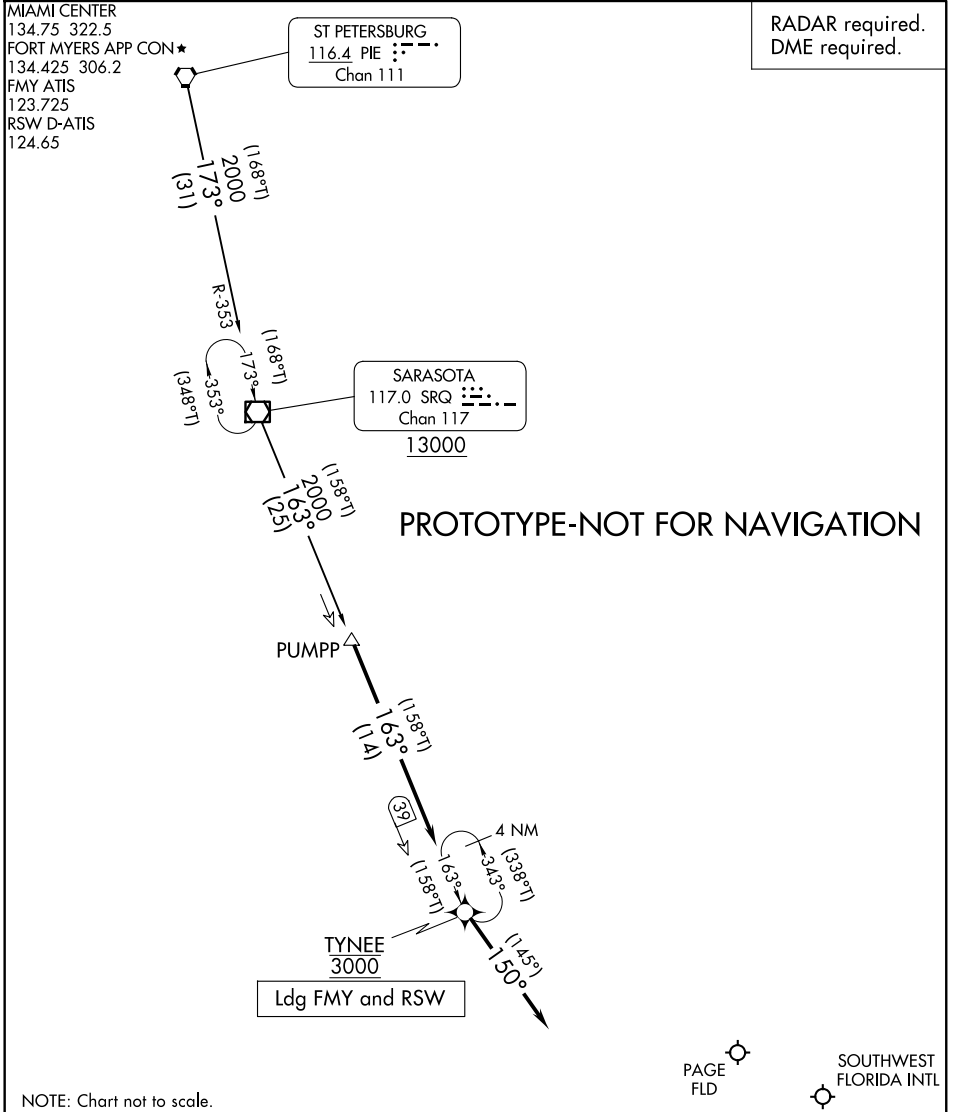
01/17/2025

QUALITY
14
CHECKED

QUALITY
38
CHECKED

PUMPP TWO ARRIVAL

FORT MYERS, FLORIDA



ARRIVAL ROUTE DESCRIPTION

ST PETERSBURG TRANSITION (PIE.PUMPP2): From over PIE VORTAC on PIE R-173 and SRQ R-353 to SRQ VOR/DME, then on SRQ R-163 to PUMPP. Thence . . .

. . . from over PUMPP on SRQ R-163 to cross TYNEE at 3000, then on heading 150°. Expect RADAR vectors to final approach course.

PUMPP TWO ARRIVAL

FORT MYERS, FLORIDA

(SRQ.PUMPP1) 24249

PUMPP ONE ARRIVAL

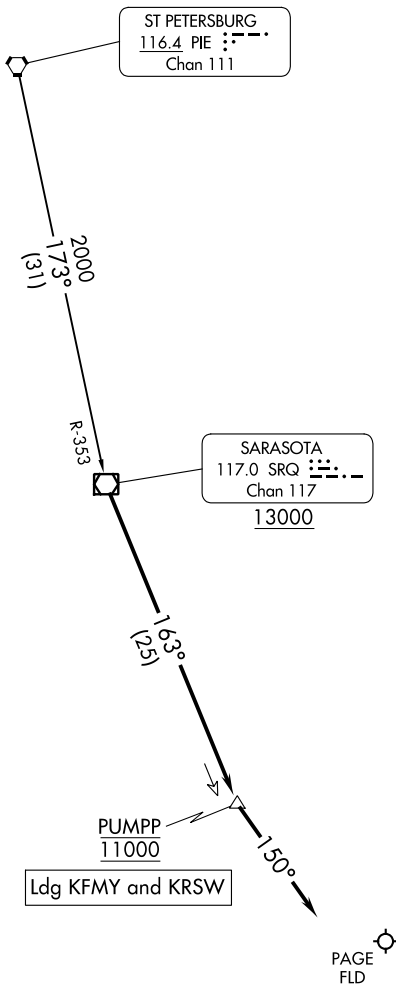
OLD

AL-154 (FAA)

FORT MYERS, FLORIDA

FORT MYERS APP CON ★
134.425 306.2
FMY ATIS
123.725
RSW D-ATIS
124.65

RADAR required.
DME required.



SE-3, 03 OCT 2024 to 31 OCT 2024

SE-3, 03 OCT 2024 to 31 OCT 2024

NOTE: Chart not to scale.

ARRIVAL ROUTE DESCRIPTION

ST PETERSBURG TRANSITION (PIE.PUMPP1): From over PIE VORTAC on PIE R-173 and SRQ R-353 to SRQ VOR/DME, thence. . .

. . .from over SRQ VOR/DME on SRQ R-163 to cross PUMPP at 11000, then on heading 150°. Expect RADAR vectors to final approach course.

PUMPP ONE ARRIVAL

(SRQ.PUMPP1) 05SEP24

FORT MYERS, FLORIDA

PUMPP TWO STAR
FORT MYERS, FL
SCALE: 1:500,000
PIE VORTAC TO SRQ VOR/DME



PUMPP TWO STAR
FORT MYERS, FL
SCALE: 1:500,000
PIE VORTAC TO SRQ VOR/DME

PIE VORTAC TO SRQ VOR/DME TOWER (660)
12.002201

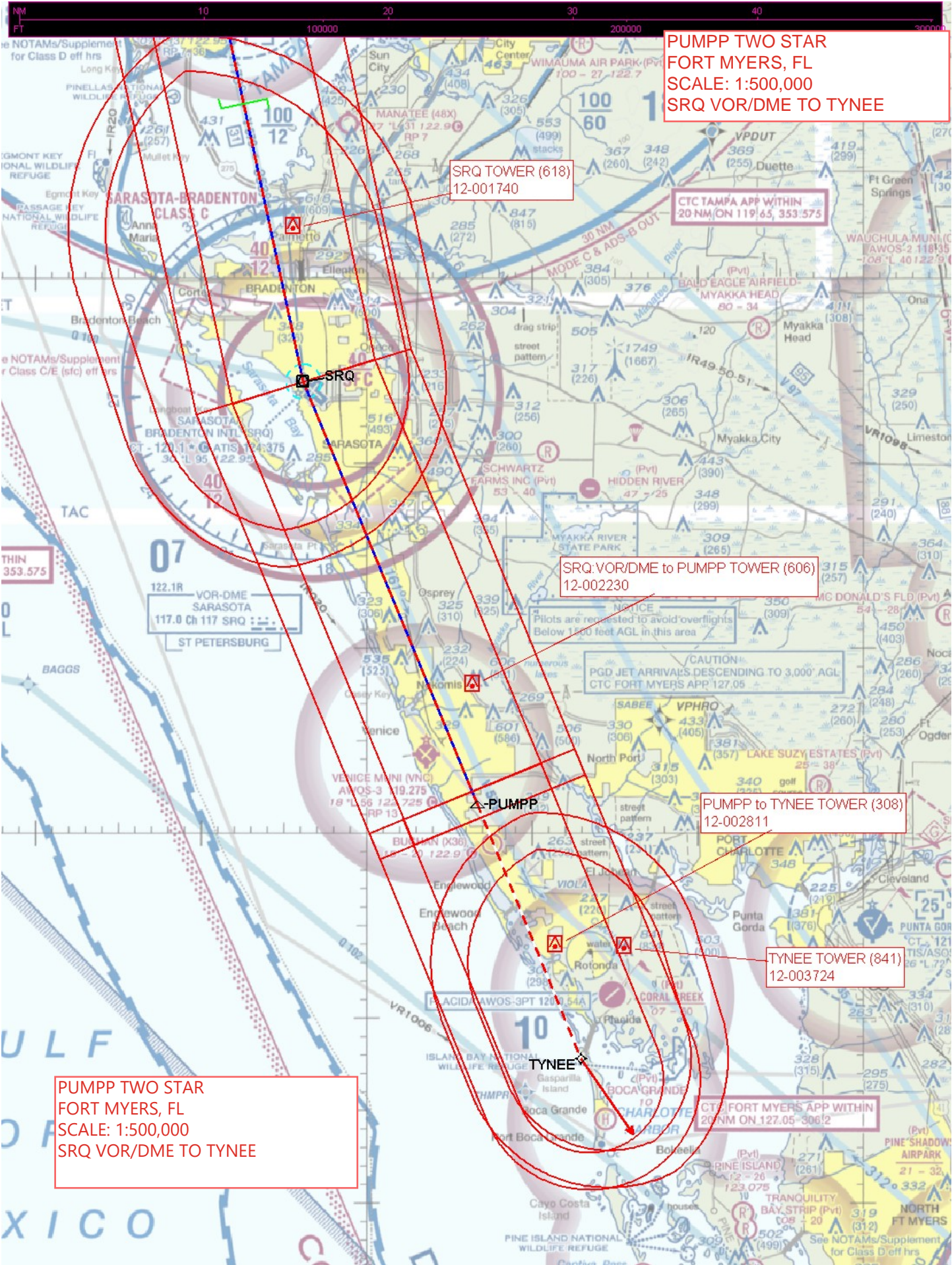
SRQ TOWER (618)
12.001740

CTC TAMPA
20 NM/ON

NOTICE SRQ VOR/DME T
12.002230
Pilots are requested to a
Below 1500 feet AGL in the

CAUTION
PGD JET ARRIVALS DESCEN
CTC FORT MYERS APP 127.6

PUMPP TWO STAR
FORT MYERS, FL
SCALE: 1:500,000
SRQ VOR/DME TO TYNEE



SRQ TOWER (618)
12-001740

CTC TAMPA APP WITHIN
20 NM ON 119.65, 353.575

SRQ VOR/DME to PUMPP TOWER (606)
12-002230

PUMPP to TYNEE TOWER (308)
12-002811

TYNEE TOWER (841)
12-003724

PUMPP TWO STAR
FORT MYERS, FL
SCALE: 1:500,000
SRQ VOR/DME TO TYNEE

CTC FORT MYERS APP WITHIN
20 NM ON 127.05-306.2