

Flight Procedures Cover Page	Task Action: P-NOTAM	Task Type: IAP	Estimated Chart Date: 03/19/2026	APWS Task ID: FOC839CD519A4AA28375BCA0AC0CE21F	APWS Project ID: 3A6219EF563A4F3CABDDF330B8BADAA0
Procedure: RNAV (GPS) RWY 8R AMDT 0E		Enroute: NO	Specialist: Shedd, Steven		Agreement Number:
Airport ID: KSUS			Airport City: ST LOUIS		State: MO
Facility ID:	Facility Type:	Flight Inspection Remark Type:			

Procedure Comments:

ACTIVE AIRPORT DATA USED

CLEAR NOTAM !FDC 5/9844

PROCESSED IAW TECHNICAL SUPPORT GROUP (AJF-17) MEMO DATED 07/17/2021, SUBJECT: GUIDANCE FOR PROCEDURAL CHANGES REQUIRING FLIGHT INSPECTION/VALIDATION

OBSTACLE WAS FLIGHT CHECKED WITH KSUS ILS OR LOC RWY 26L ON 09/27/2023

CONTACT: ALLAN WILL 405-954-6103

QUALITY
9
CHECKED
BEGUE

QUALITY
10
CHECKED

OLD

ST. LOUIS, MISSOURI

AL-5400 (FAA)

25219


WAAS CH 61114 W08B	APP CRS 079°	Rwy Ldg TDZE 462 Apt Elev 463
--	------------------------	---

RNAV (GPS) RWY 8R

SPIRIT OF ST LOUIS (SUS)

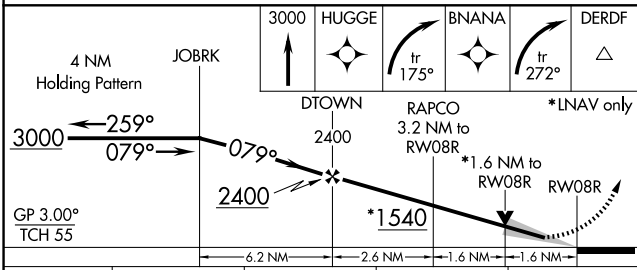
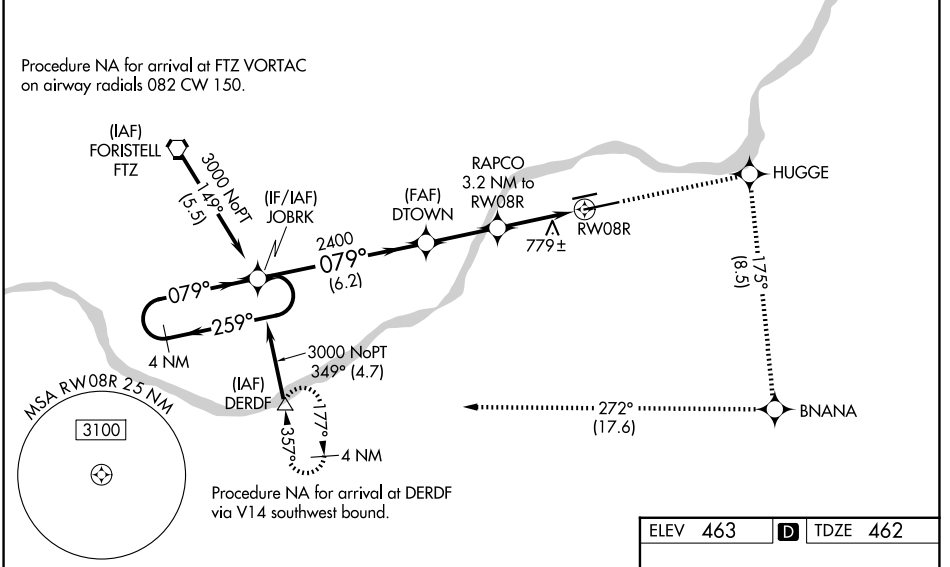
RNP APCH - GPS.

⚠ For uncompensated Baro-VNAV systems, LNAV/VNAV NA below -15°C or above 54°C. Baro-VNAV and VDP NA when using St Louis Lambert Intl altimeter setting. When local altimeter setting not received, use St Louis Lambert Intl altimeter setting and increase all DA 57 feet all MDA 60 feet, increase visibility LNAV/VNAV all Cats and LNAV Cats C/D 1/8 mile, and Circling Cat C 1/4 mile. For inop MALS, increase LNAV/VNAV all Cats visibility to 2 1/2 mile and LNAV Cats C/D visibility to 1 1/2 mile. For inop MALS when using St Louis Lambert Intl altimeter setting, increase LNAV Cats C/D visibility to 1 3/4 mile.
#RVR 1800 authorized with use of FD or AP or HUD to DA, NA when using St Louis Lambert Intl altimeter setting.

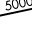
MALS 


MISSED APPROACH: Climb to 3000 direct HUGGE and right turn on track 175° to BNANA and right turn on track 272° to DERDF and hold.

ATIS 134.8	ST. LOUIS APP CON 126.5 254.3	SPIRIT TOWER* 124.75 (CTAF) 0 257.2	GND CON 121.7	CLNC DEL 133.1	ST. LOUIS CLNC DEL 121.7 (when tower closed)	UNICOM 122.95
----------------------	---	---	-------------------------	--------------------------	---	-------------------------



ELEV 463 **D** TDZE 462

MALS 

TWR 

5000 X 75


7486 X 150


26R

26L

08

079°

MIRL Rwy 8L-26R 

HIRL Rwy 8R-26L 

CATEGORY	A	B	C	D
LPV DA#		662/24	200 (200-1/2)	
LNAV/VNAV DA		1129-1 7/8	667 (700-1 7/8)	
LNAV MDA	1040/24	578 (600-1/2)	1040-1 1/4	578 (600-1 1/4)
CIRCLING	1100-1 637 (700-1)	1140-1 677 (700-1)	1160-2 697 (700-2)	1360-3 897 (900-3)

ST. LOUIS, MISSOURI
Orig-D 06OCT22

38°40'N-90°39'W

RNAV (GPS) RWY 8R

SPIRIT OF ST LOUIS (SUS)

NC-3, 02 OCT 2025 to 30 OCT 2025