

Flight Procedures Cover Page	Task Action: FLIGHT CHECK	Task Type: IAP	Estimated Chart Date: 10/02/2025	APWS Task ID: F159A22B91444006A1F4910E954D913C	APWS Project ID: 2D1106F5FE3C48FFB13D2ED1DEE122AC
Procedure: ILS OR LOC RWY 5 AMDT 7		Enroute: NO	Specialist: Kercher, Devon		Agreement Number:
Airport ID: KGYH			Airport City: GREENVILLE		State: SC
Facility ID: GYH	Facility Type: ILS	Flight Inspection Remark Type: New FC Slot			

Procedure Comments:

PENDING DATA FOR SPA VORTAC USED (10-02-2025).

ALTERNATE MA CHANGED DUE TO SPA VORTAC LOCATION CHANGE.

CANCELS FDC 5/2037 NOTAM.

CONTACT ROBERT HAMILTON (AJV-A433) 405-954-4608.

QUALITY
9
CHECKED
BEGUE

QUALITY
40
CHECKED



INFO ONLY

U.S. Department of Transportation
Federal Aviation Administration

Memorandum

Date: 03/26/2025
To: Manager, Instrument Flight Procedures Coordination Team
From: Manager, Flight Technologies and Procedures Division
Subject: Approval Request; Memorandum Dated 03/19/2025

The following Approvals at Donaldson FLD, Greenville, SC are approved for an extension period of three years effective April 2, 2025.

ILS OR LOC RWY 5, AMDT 4
RNAV (GPS) RWY 5, AMDT 1
RNAV (GPS) RWY 23, AMDT 1

The intent of the extension is to allow time to amend the procedures and acquire the necessary funding to engineer and relocate the VGSI system.

Please direct all inquiries to Sherri Hubbard, PRB Lead, Flight Procedures and Airspace Group, at (405) 954-6618.

Attachments



INFO ONLY

**FAA
Aviation Safety**

Memorandum

Date: 3/19/2025

To: Manager, Flight Procedure Standards

From: Jon S. Walker Aeronautical Information Specialist, Flight Procedures Team

Subject: **VGSI Approval Extension Request: Donaldson FLD, (KGYH), SC**
ILS or LOC RWY 5, RNAV (GPS) RWY 5, RNAV (GPS) RWY 23

The attached VGSI approval letters for the ILS or LOC RWY 5, RNAV (GPS) RWY 5 and RNAV (GPS) RWY 23 at Donaldson FLD, Greenville, SC were approved for a temporary period of three years effective until March 23, 2025.

The Eastern Flight Procedures Team is requesting a three year extension to the existing VGSI approval letters.

Since those approvals, the airport has not been able to acquire the necessary funding to engineer and relocate either VGSI system. The airport has verified they will continue to seek the required funding and make the VGSI relocation a part of their overall airport plan. At this time, the Eastern Flight Procedures Team does not have the resources to amend the procedures, but will within the three year extension period.

We respectfully request a three year extension (to April 2028) to afford a more realistic timeline to amend the three instrument flight procedures.



U.S. Department of Transportation
Federal Aviation Administration

INFO ONLY

Memorandum

Date: 03/26/2025
 To: Manager, Instrument Flight Procedures Coordination Team
 From: Manager, Flight Technologies and Procedures Division
 Subject: Approval Request; Memorandum Dated 03/19/2025

The following Approvals at Donaldson FLD, Greenville, SC are approved for an extension period of three years effective April 2, 2025.

- ILS OR LOC RWY 5, AMDT 4
- RNAV (GPS) RWY 5, AMDT 1
- RNAV (GPS) RWY 23, AMDT 1

The intent of the extension is to allow time to amend the procedures and acquire the necessary funding to engineer and relocate the VGSI system.

Please direct all inquiries to Sherri Hubbard, PRB Lead, Flight Procedures and Airspace Group, at (405) 954-6618.

Attachments

CONCURRENCES	
ROUTING SYMBOL	AFS-410A
INITIALS/SIG	
DATE	
ROUTING SYMBOL	AFS-410B
INITIALS/SIG	Digitally signed by MERRILL F ARMSTRONG Date: 2025.03.26 11:32:37 -0400
DATE	
ROUTING SYMBOL	AFS-410C
INITIALS/SIG	Digitally signed by THOMAS J WALSH Date: 2025.03.26 07:27:43 -0700
DATE	
ROUTING SYMBOL	AFS-420C
INITIALS/SIG	
DATE	
ROUTING SYMBOL	AFS-420E
INITIALS/SIG	Digitally signed by JAMES B ROSE Date: 2025.03.27 10:32:58 -0500
DATE	
ROUTING SYMBOL	AFS-420SE
INITIALS/SIG	
DATE	
ROUTING SYMBOL	AFS-420W
INITIALS/SIG	
DATE	
ROUTING SYMBOL	
INITIALS/SIG	
DATE	

GREENVILLE, SOUTH CAROLINA

OLD

23278

LOC/DME I-GYH 108.3 Chan 20	APP CRS 047°	Rwy Idg & TDZE Apt Elev
--	------------------------	----------------------------

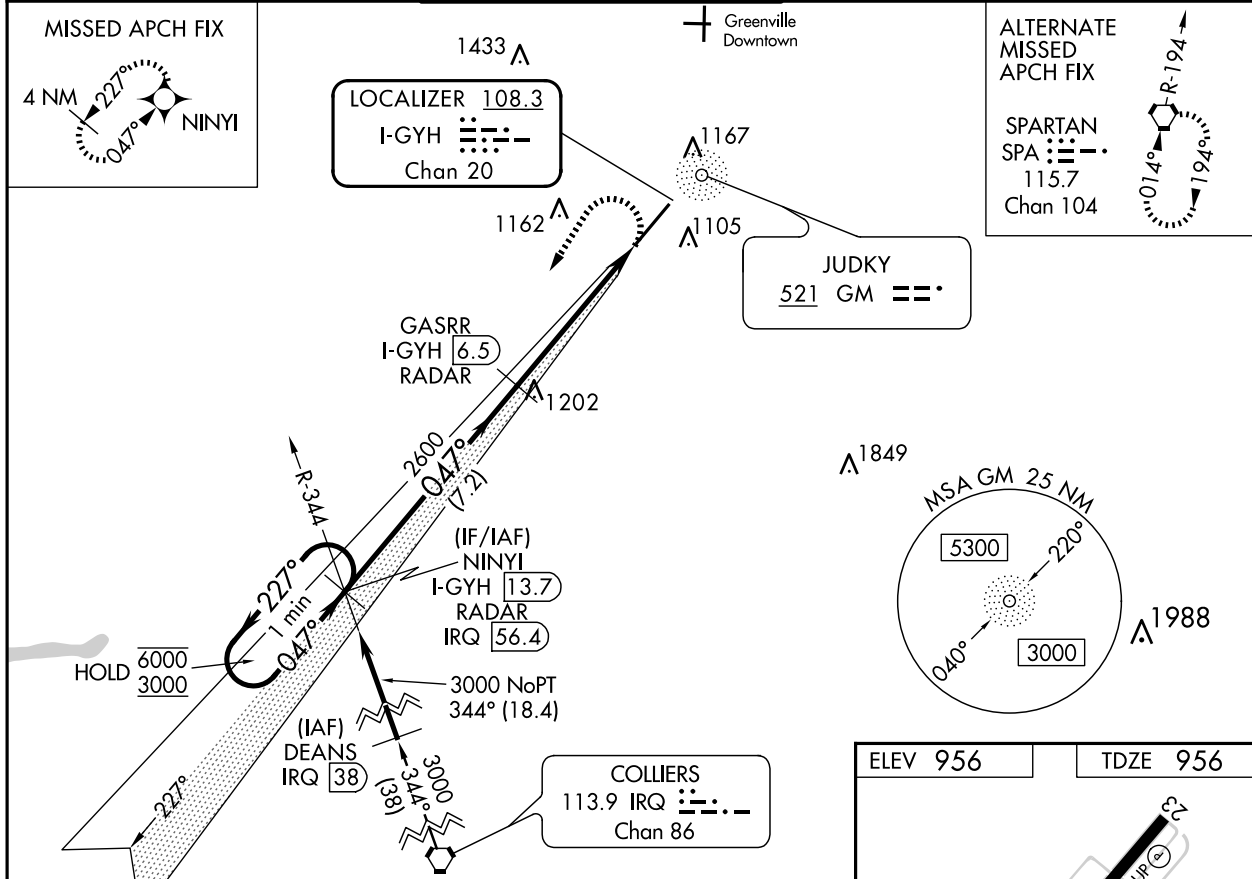
ILS or LOC RWY 5
DONALDSON FLD (GYH)

RNP APCH - GPS.
DME or RADAR required.

⚠ VDP NA when using Greer altimeter setting. When local altimeter setting not received, use Greer altimeter setting and increase S-ILS 5 DA to 1185 feet; increase all MDAs 40 feet and S-LOC 5 visibility Cats C, D, E 1/8 SM. For inop ALS, increase S-ILS 5 Cat E visibility to 3/4 SM and increase S-LOC 5 Cat E visibility to 1 1/8 SM. For inop ALS when using Greer altimeter setting, increase S-ILS 5 Cat E visibility to 3/4 SM and increase S-LOC 5 Cat E visibility to 1 1/4 SM. DME required when GSP App Con closed.

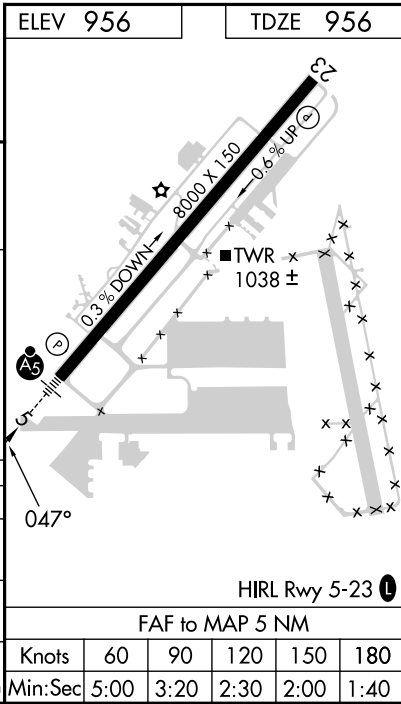
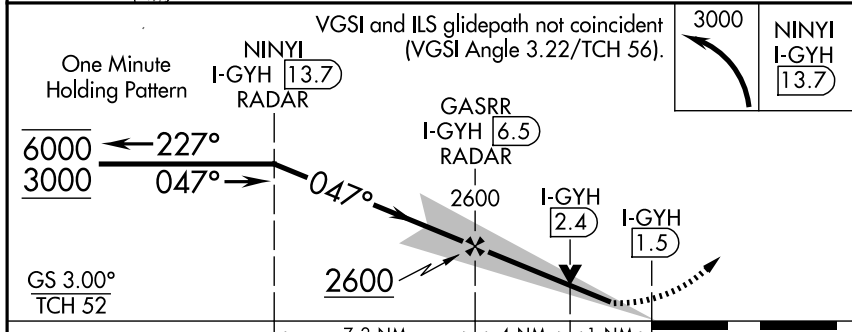
MALSR MISSED APPROACH: Climbing left turn to 3000 direct NINYI and hold.

AWOS-3 127.325	GREER APP CON ★ 118.8 270.275	DONALDSON TOWER ★ 133.325 (CTAF) 0 269.25	GND CON 121.4	CLNC DEL 121.4	UNICOM 122.7
--------------------------	---	---	-------------------------	--------------------------	------------------------



SE-2, 20 MAR 2025 to 17 APR 2025

SE-2, 20 MAR 2025 to 17 APR 2025



CATEGORY	A	B	C	D	E
S-ILS 5	1156-1/2		200 (200-1/2)		
S-LOC 5	1340-1/2	384 (400-1/2)	1340-5/8		384 (400-5/8)
CIRCLING	1420-1 464 (500-1)	1480-1 524 (600-1)	1480-1 1/2 524 (600-1 1/2)	1520-2 564 (600-2)	1560-2 1/4 604 (700-2 1/4)

GREENVILLE, SOUTH CAROLINA
Amdt 6 23FEB23

34°46'N-82°23'W

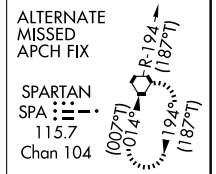
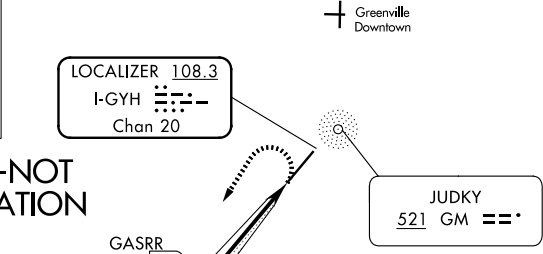
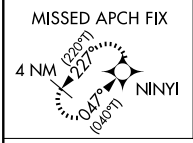
DONALDSON FLD (GYH)
ILS or LOC RWY 5

LOC/DME I-GYH 108.3 Chan 20	APP CRS 047°	Rwy Ldg TDZE 8000 956 Apt Elev 956
--	------------------------	--

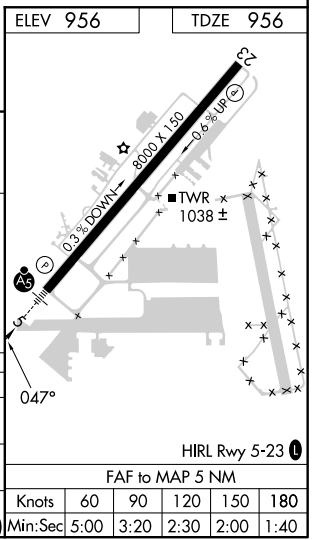
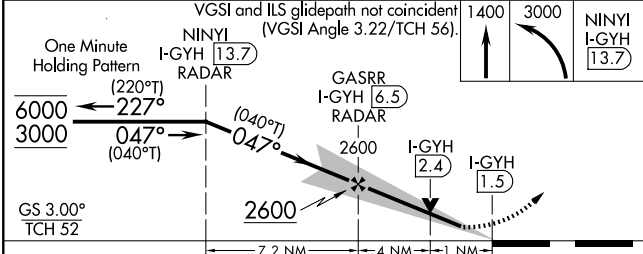
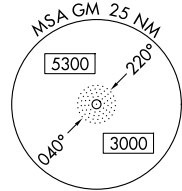
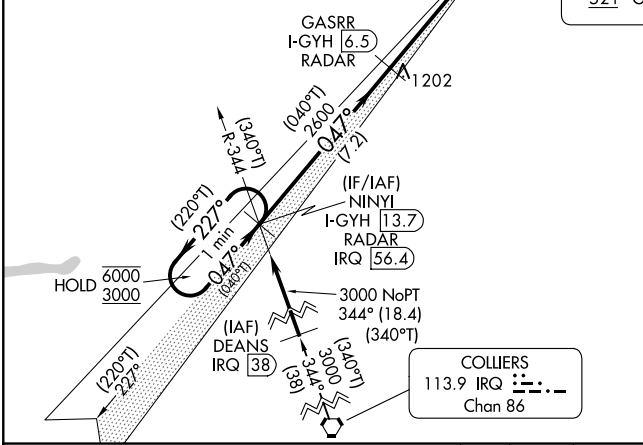
ILS or LOC RWY 5

DONALDSON FLD (GYH)

RNP APCH - GPS.		DME or RADAR required.		MALSR 	MISSED APPROACH: Climb to 1400 then climbing left turn to 3000 direct NINYI and hold.
AWOS-3 127.325	GREER APP CON ★ 118.8 270.275	DONALDSON TOWER ★ 133.325 (CTAF) 269.25	GND CON 121.4		

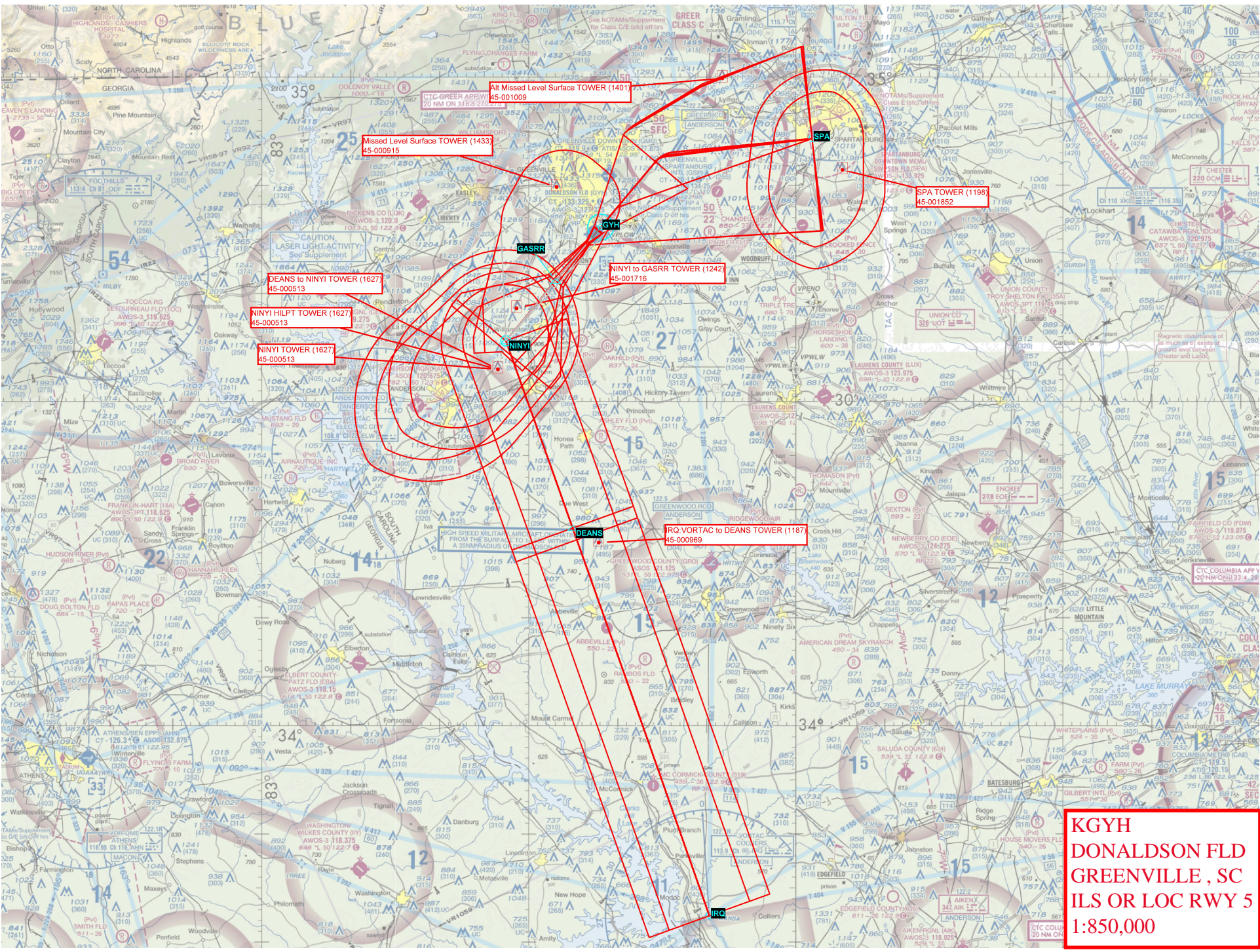


PROTOTYPE-NOT FOR NAVIGATION



CATEGORY	A	B	C	D	E
S-ILS 5	1156-1/2		200 (200-1/2)		
S-LOC 5	1340-1/2	384 (400-1/2)	1340-5/8		384 (400-5/8)
CIRCLING	1460-1 504 (600-1)	1480-1 524 (600-1)	1480-1 1/2 524 (600-1 1/2)	1520-2 564 (600-2)	1560-2 1/4 604 (700-2 1/4)

FAF to MAP 5 NM					
Knots	60	90	120	150	180
Min:Sec	5:00	3:20	2:30	2:00	1:40



All Missed Level Surface TOWER (1401)
45-001009

Missed Level Surface TOWER (1433)
45-000915

DEANS to NINYI TOWER (1627)
45-000513

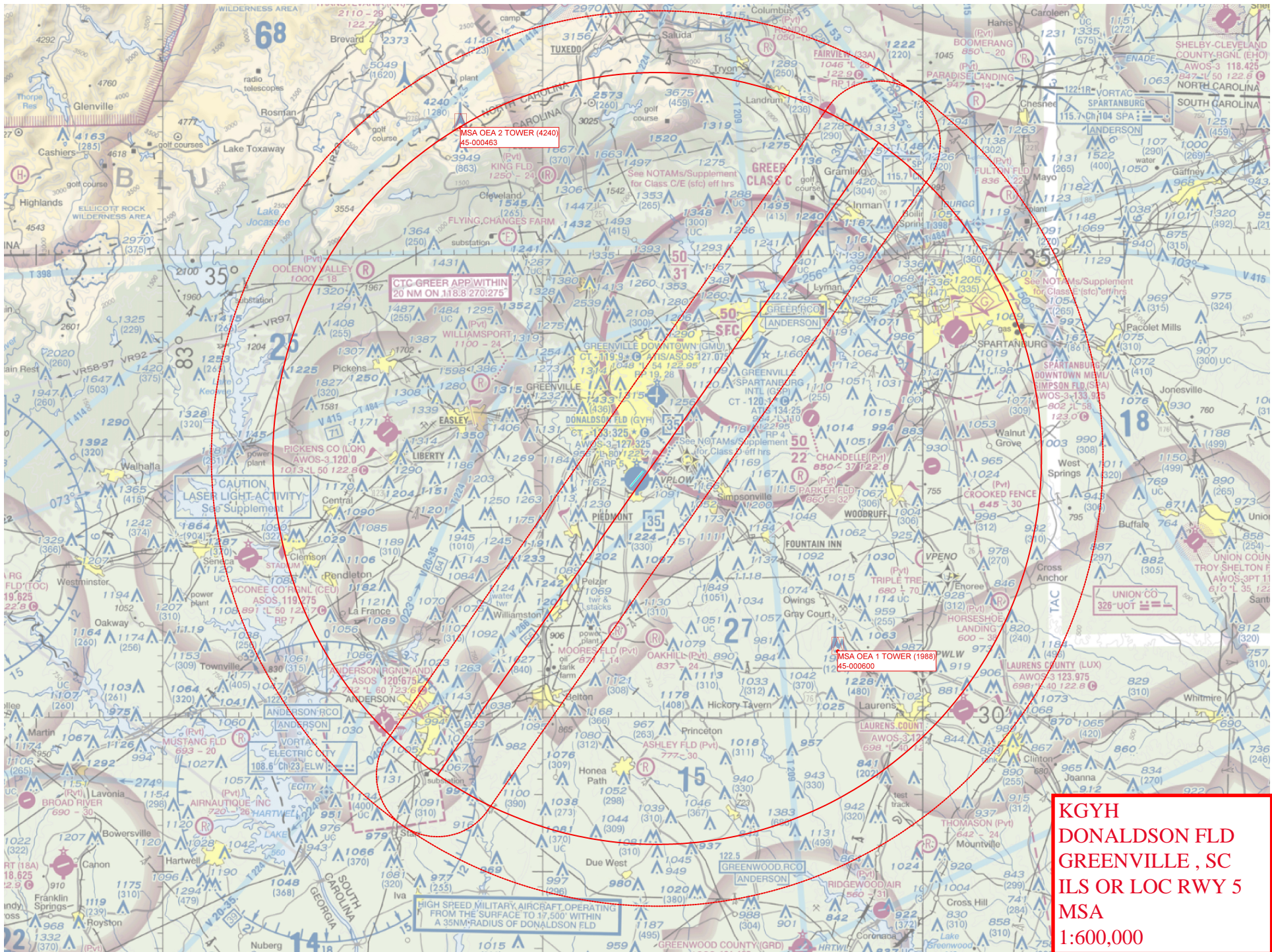
NINYI HILPT TOWER (1627)
45-000513

NINYI TOWER (1627)
45-000513

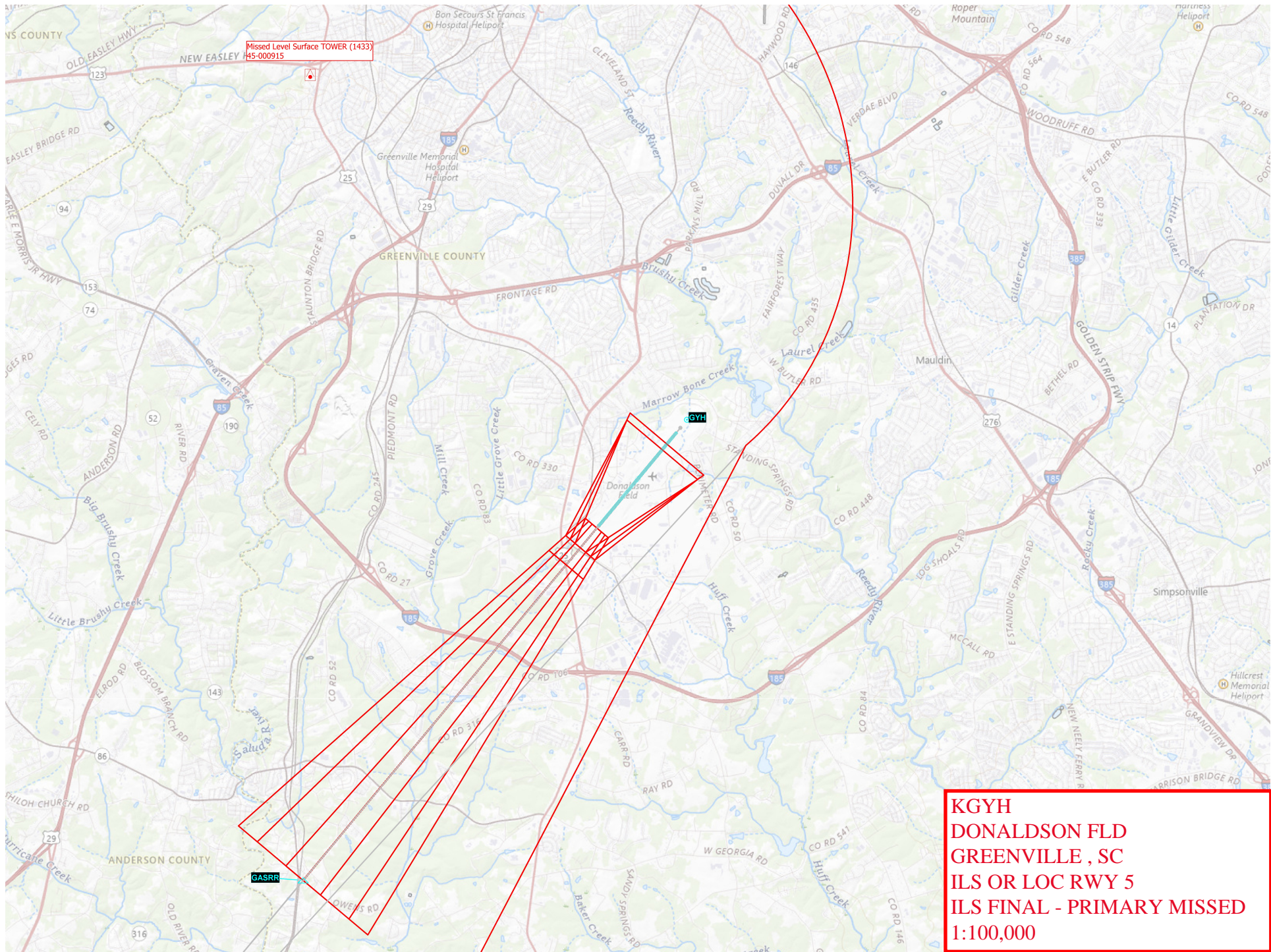
NINYI to GASRR TOWER (1242)
45-001716

DEANS to VORTAL TOWER (1187)
45-000969

KGYH
DONALDSON FLD
GREENVILLE, SC
ILS OR LOC RWY 5
1:850,000

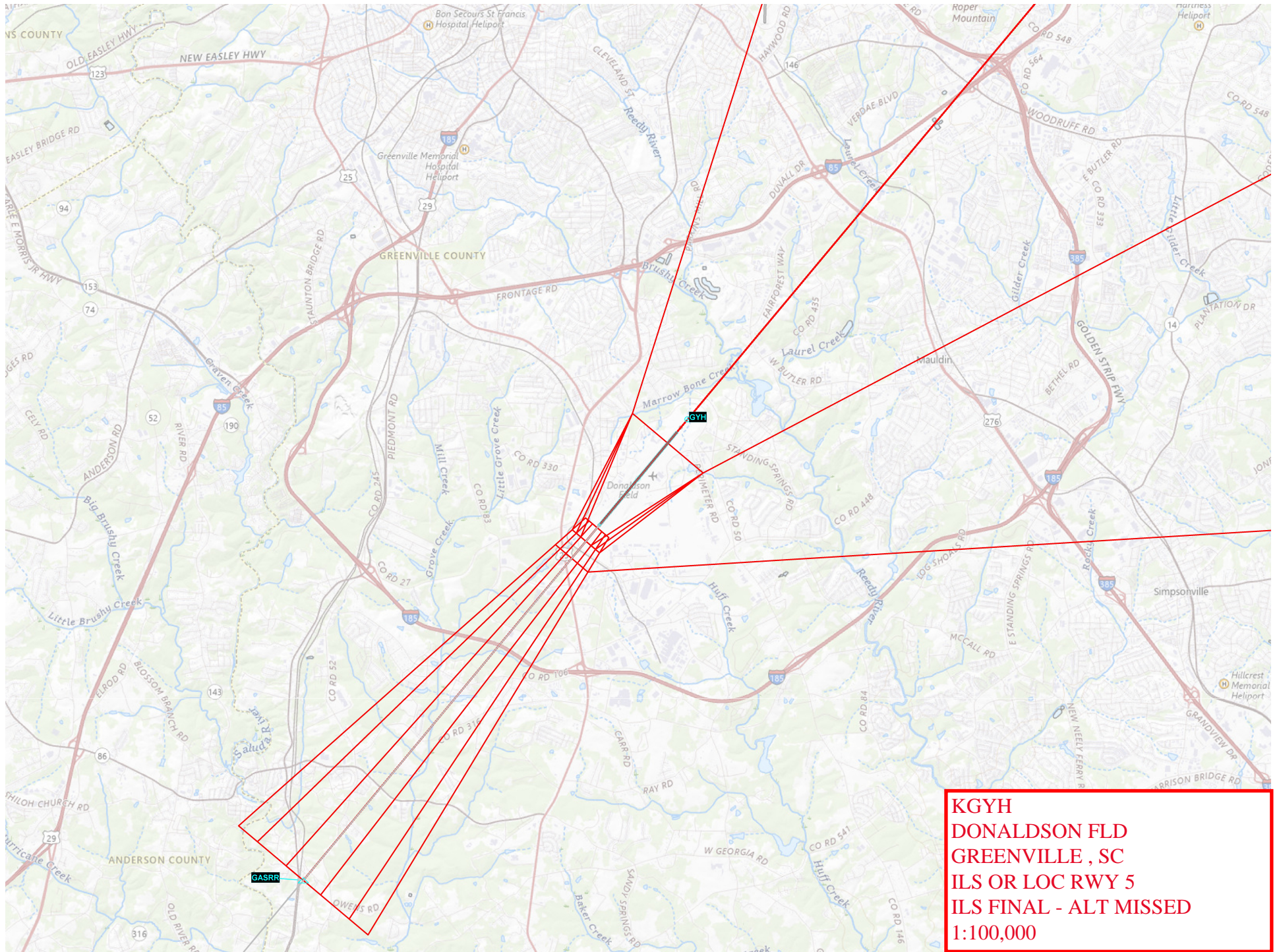


KGYH
DONALDSON FLD
GREENVILLE, SC
ILS OR LOC RWY 5
MSA
1:600,000

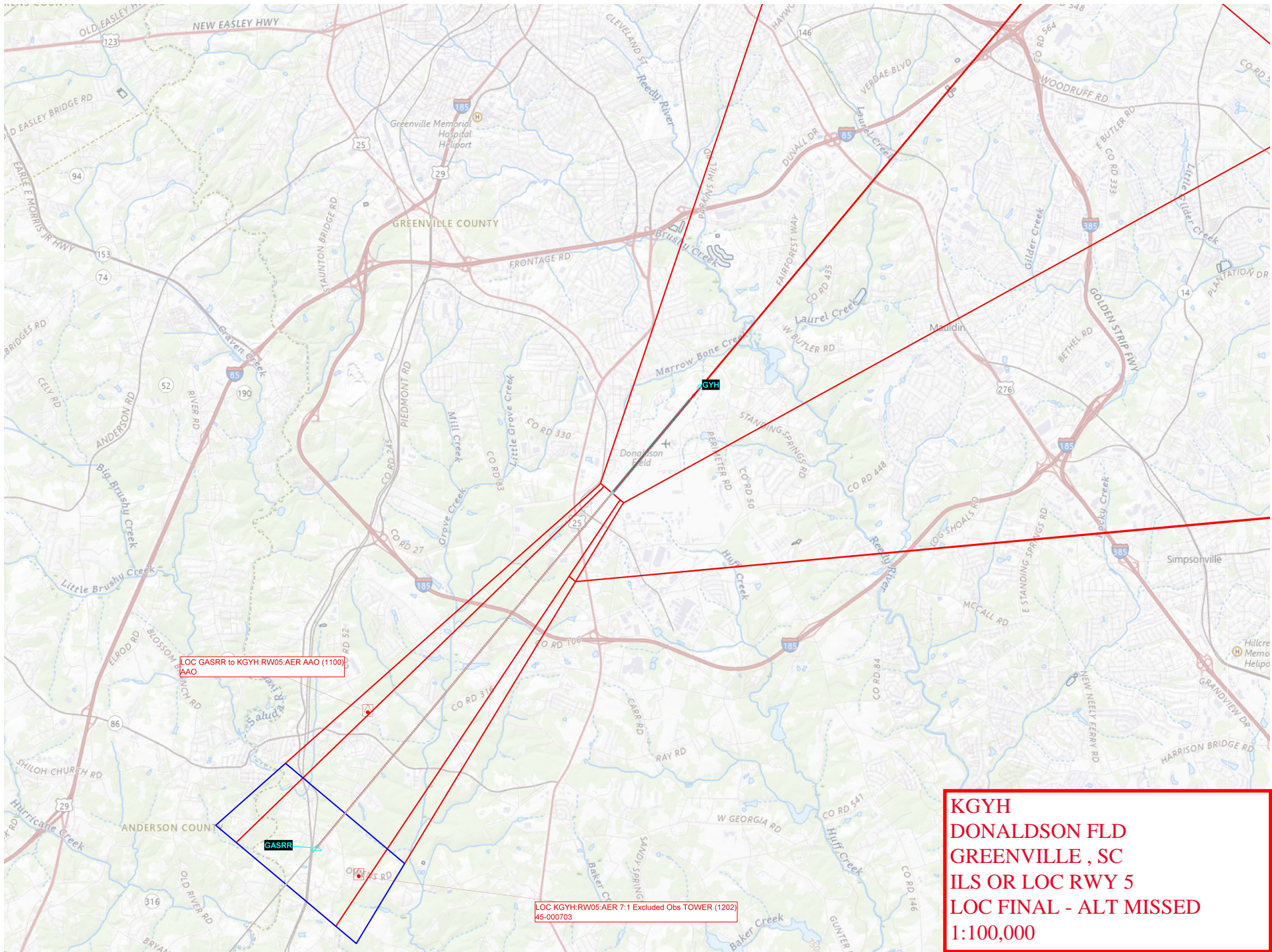


Missed Level Surface TOWER (1433)
HS-000915

KGYH
DONALDSON FLD
GREENVILLE , SC
ILS OR LOC RWY 5
ILS FINAL - PRIMARY MISSED
1:100,000



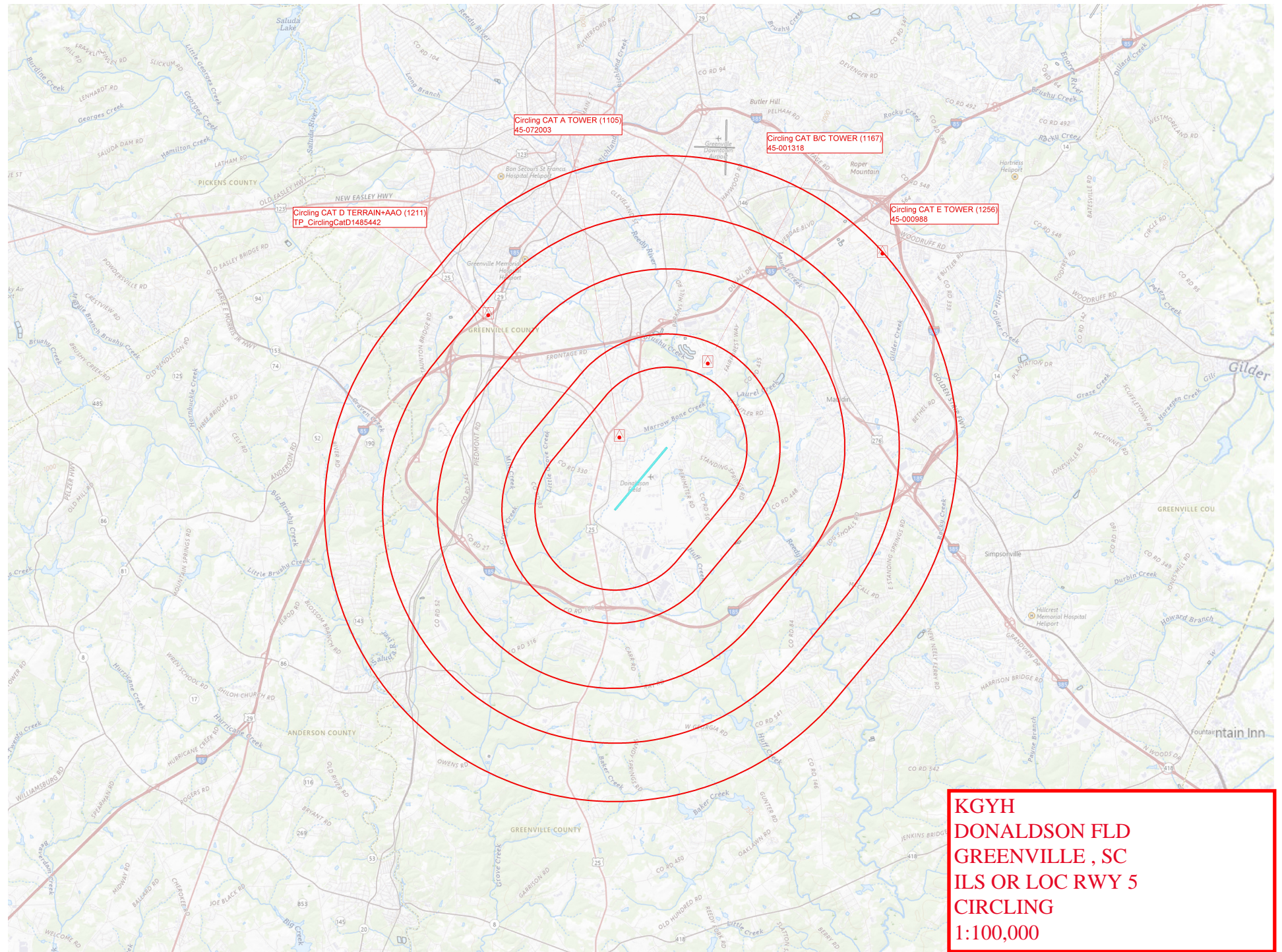
KGYH
DONALDSON FLD
GREENVILLE , SC
ILS OR LOC RWY 5
ILS FINAL - ALT MISSED
1:100,000



KGYH
DONALDSON FLD
GREENVILLE , SC
ILS OR LOC RWY 5
LOC FINAL - ALT MISSED
1:100,000

LOC GASRR to KGYH: RW05: AER AAO (1100)
 AAO

LOC KGYH: RW05: AER 7:1 Excluded Obs TOWER (1202)
 45-000703



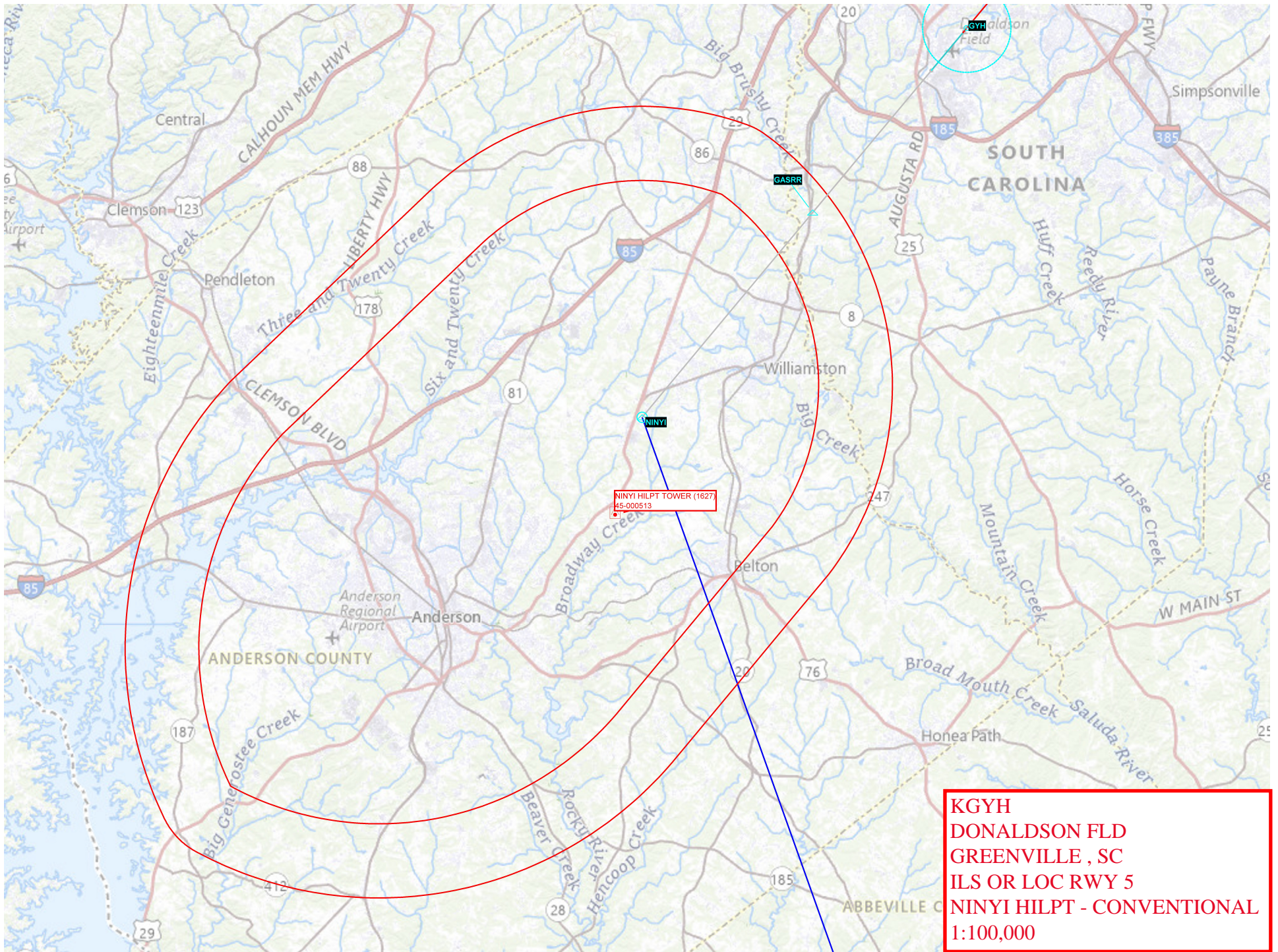
Circling CAT A TOWER (1105)
45-072003

Circling CAT B/C TOWER (1167)
45-001318

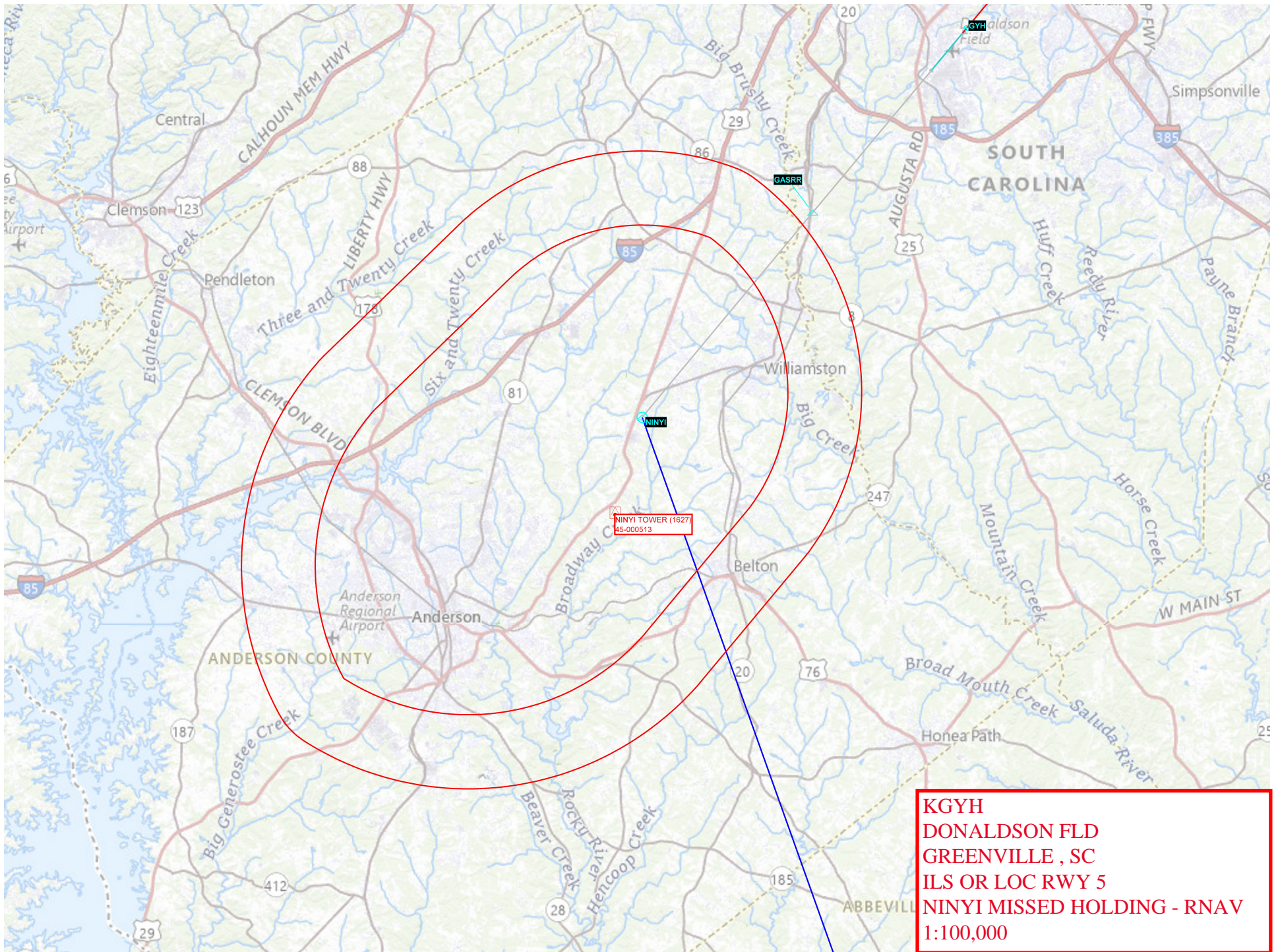
Circling CAT D TERRAIN+AAO (1211)
TP_CirclingCatD1485442

Circling CAT E TOWER (1256)
45-000988

**KGYH
DONALDSON FLD
GREENVILLE, SC
ILS OR LOC RWY 5
CIRCLING
1:100,000**

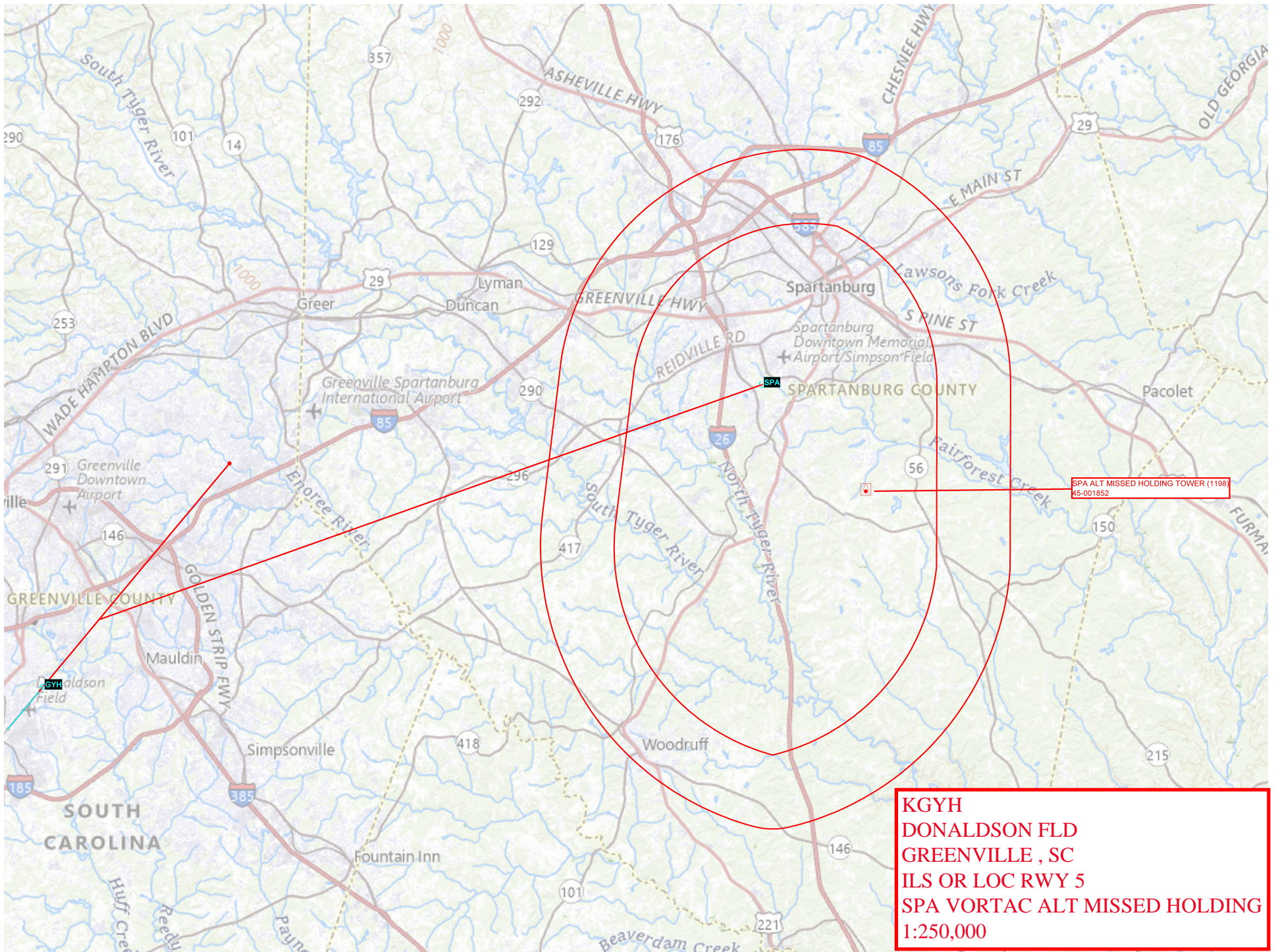


KGYH
DONALDSON FLD
GREENVILLE, SC
ILS OR LOC RWY 5
NINYI HILPT - CONVENTIONAL
1:100,000



NINYI TOWER (1627)
45-000513

KGYH
DONALDSON FLD
GREENVILLE , SC
ILS OR LOC RWY 5
NINYI MISSED HOLDING - RNAV
1:100,000



**KGYH
DONALDSON FLD
GREENVILLE, SC
ILS OR LOC RWY 5
SPA VORTAC ALT MISSED HOLDING
1:250,000**