

Flight Procedures Cover Page	Task Action: P-NOTAM	Task Type: IAP	Estimated Chart Date: 07/09/2026	APWS Task ID: F2297BDD562445D69845FD6B73677452	APWS Project ID: BCFA28186A7A49D6A7634388A00FF290
Procedure: RNAV (GPS) RWY 13 AMDT 0B		Enroute: NO	Specialist: Smith, Bryant		Agreement Number:
Airport ID: KLJF			Airport City: LITCHFIELD		State: MN
Facility ID:	Facility Type:	Flight Inspection Remark Type:			

Procedure Comments:
P-NOTAM TO CORRECT ALTERNATE MINIMUMS.

CONTACT: ROB HAMILTON A433 MANAGER, 405-954-4608





ALTERNATE MINS

25247

M5
OLD



NAME ALTERNATE MINIMUMS

LANGDON, ND

ROBERTSON
FLD (D55).....RNAV (GPS) Rwy 14
RNAV (GPS) Rwy 32¹

NA when local weather not available.

¹Category C, 800-2¼.

LINTON, ND

LINTON MUNI (7L2).....RNAV (GPS) Rwy 9
RNAV (GPS) Rwy 27

NA when local weather not available.

LITCHFIELD, MN

LITCHFIELD
MUNI (LJF).....RNAV (GPS) Rwy 13
RNAV (GPS) Rwy 31

NA when local weather not available.

Category D, 1000-3.

LITTLE FALLS, MN

LITTLE FALLS/MORRISON COUNTY-
LINDBERGH FLD (LXL).....RNAV (GPS) Rwy 31

NA when local weather not available.

LONG PRAIRIE, MN

TODD FLD (14Y).....RNAV (GPS) Rwy 34

NA when local weather not available.

LONGVILLE, MN

LONGVILLE
MUNI (XVG).....RNAV (GPS) Rwy 13
RNAV (GPS) Rwy 31

NA when local weather not available.

LUVERNE, MN

QUENTIN AANENSON
FLD (LYV).....RNAV (GPS) Rwy 18
RNAV (GPS) Rwy 36

NA when local weather not available.

Category C, 1000-2¾; Category D, 1000-3.

MADISON, MN

LAC QUI PARLE
COUNTY (DXX).....RNAV (GPS) Rwy 14
RNAV (GPS) Rwy 32

NA when local weather not available

MADISON, SD

MADISON MUNI (MDS).....RNAV (GPS) Rwy 15
RNAV (GPS) Rwy 33

NA when local weather not available.

Category D, 800-2¼.

MAHNOMEN, MN

MAHNOMEN
COUNTY (3N8).....RNAV (GPS) Rwy 17
RNAV (GPS) Rwy 35

NA when local weather not available

NAME ALTERNATE MINIMUMS

MANDAN, ND

MANDAN RGNL/LAWLER
FLD (Y19).....RNAV (GPS) Rwy 13
RNAV (GPS) Rwy 31
VOR-A

NA when local weather not available

MANKATO, MN

MANKATO RGNL
(MKT).....RNAV (GPS) Rwy 4
RNAV (GPS) Rwy 15
RNAV (GPS) Rwy 22
RNAV (GPS) Rwy 33

NA when local weather not available.

MAPLE LAKE, MN

MAPLE LAKE MUNI-BILL MAVENCAMP
SR FLD (MGG).....RNAV (GPS)-A

NA when local weather not available.

MARSHALL, MN

SOUTHWEST MINNESOTA RGNL MARSHALL/
RYAN FLD (MML).....RNAV (GPS) Rwy 12
RNAV (GPS) Rwy 30

NA when local weather not available.

MILBANK, SD

MILBANK
MUNI (1D1).....RNAV (GPS) Rwy 31

NA when local weather not available.

MINNEAPOLIS, MN

AIRLAKE (LVN).....RNAV (GPS) Rwy 12¹
RNAV (GPS) Rwy 30²
VOR Rwy 12¹

¹Category D, 800-2¼.

²NA when local weather not available.

ANOKA COUNTY/BLAINE

(JANES FLD) (ANE).....ILS or LOC Rwy 27
RNAV (GPS) Rwy 27

NA when local weather not available.

CRYSTAL (MIC).....RNAV (GPS) Rwy 14
RNAV (GPS) Rwy 32

NA when local weather not available.

FLYING CLOUD

(FCM).....COPTER ILS or LOC Rwy 10R¹
ILS or LOC Rwy 10R¹²
RNAV (GPS) Rwy 10L
RNAV (GPS) Rwy 10R
RNAV (GPS) Rwy 28L
RNAV (GPS) Rwy 28R
RNAV (GPS) Rwy 36
VOR Rwy 10R
VOR/DME Rwy 36

NA when local weather not available.

¹NA when control tower closed.

²ILS, Category D, 700-2.

02 OCT 2025 to 30 OCT 2025

02 OCT 2025 to 30 OCT 2025



ALTERNATE MINS

25247

M5

NC-1



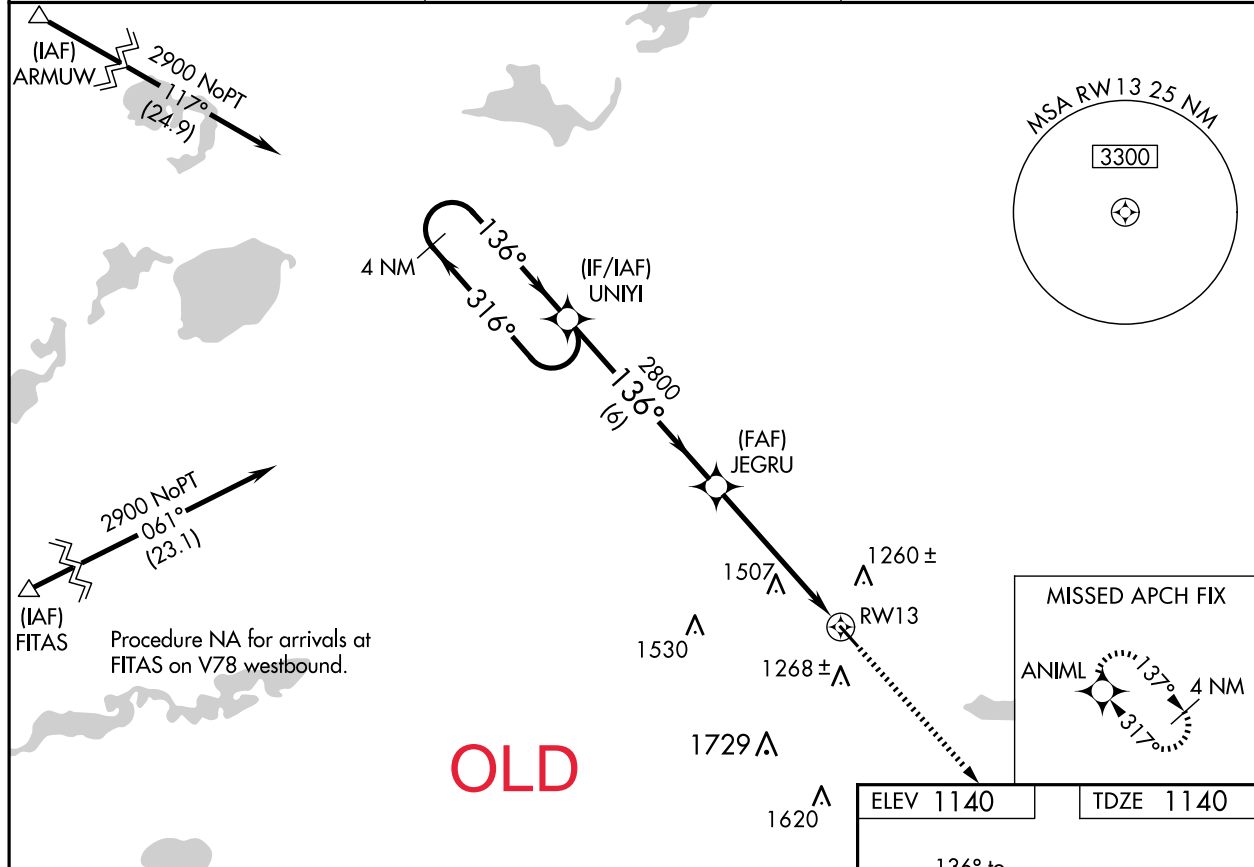
WAAS CH 69419 W13A	APP CRS 136°	Rwy Idg 4002 TDZE 1140 Apt Elev 1140
--	------------------------	---

OLD

RNAV (GPS) RWY 13
LITCHFIELD MUNI (LJF)

RNP APCH - GPS.	MISSED APPROACH: Climb to 2800 direct ANIML and hold.
<p>▼ Baro-VNAV NA when using Hutchinson altimeter setting. For uncompensated Baro-VNAV systems, LNAV/VNAV NA below -17°C or above 54° C. Visibility reduction by helicopters</p> <p>▲ NA. When local altimeter setting not received, use Hutchinson altimeter setting; increase LPV DA to 1436 feet; increase LNAV/VNAV DA to 1980 feet and visibility all Cats ¼ SM; increase all MDA 60 feet and Circling Cat C visibility ¼ SM. VDP NA with Hutchinson altimeter setting.</p>	

AWOS-3 119.65	MINNEAPOLIS CENTER 125.5 323.1	CTAF 122.9 0
-------------------------	--	------------------------



NC-1, 02 OCT 2025 to 30 OCT 2025

NC-1, 02 OCT 2025 to 30 OCT 2025

4 NM Holding Pattern		UNIYI	JEGRU	2800 ANIML
2900 ← 316°		→ 136°	→ 136°	*LNAV only
GP 3.00°		2800	*2 NM to RWY 13	RWY 13
TCH 39		6 NM	3 NM	2 NM
CATEGORY	A	B	C	D
LPV DA	1390-1		250 (300-1)	
LNAV/VNAV DA	1934-2¾		794 (800-2¾)	
LNAV MDA	1820-1	680 (700-1)	1820-2 680 (700-2)	1820-2¼ 680 (700-2¼)
CIRCLING	1820-1	680 (700-1)	1860-2 720 (800-2)	2080-3 940 (1000-3)

ELEV 1140 TDZE 1140

REIL Rws 13 and 31
MIRL Rwy 13-31