

| | | | | | |
|---|-------------------------|--------------------------------|-------------------------------------|---|--|
| Flight Procedures Cover Page | Task Action: P-NOTAM | Task Type: IAP | Estimated Chart Date: 09/03/2026 | APWS Task ID: F2EACC4375B6491488C542FEF5E65666 | APWS Project ID: 137B4924FEB94032A6931762F548A56D |
| Procedure: RNAV (GPS) RWY 36 AMDT 2B | | Enroute: NO | Specialist: Johnson, Timothy | | Agreement Number: |
| Airport ID: KIXD | | | Airport City: OLATHE | | State: KS |
| Facility ID: | Facility Type: | Flight Inspection Remark Type: | | | |

Procedure Comments:

Visibility Initiative (Garmin) - Update IAP visibility minimums IAW Order 8260.3, Chapter 3, Section 3-3. Visibility Minimums.

PROCESSED IAW TECHNICAL SUPPORT GROUP (AJF-17) MEMO DATED 07/07/2021, SUBJECT: GUIDANCE FOR PROCEDURAL CHANGES REQUIRING FLIGHT INSPECTION/VALIDATION.

CONTACT: CASEY HILL (405) 954-0624.



OLATHE, KANSAS

AL-302 (FAA)


25331

| | | |
|--|------------------------|---|
| WAAS CH 81807 W36A | APP CRS 356° | Rwy Ldg 7339 TDZE 1066 Apt Elev 1087 |
|--|------------------------|---|

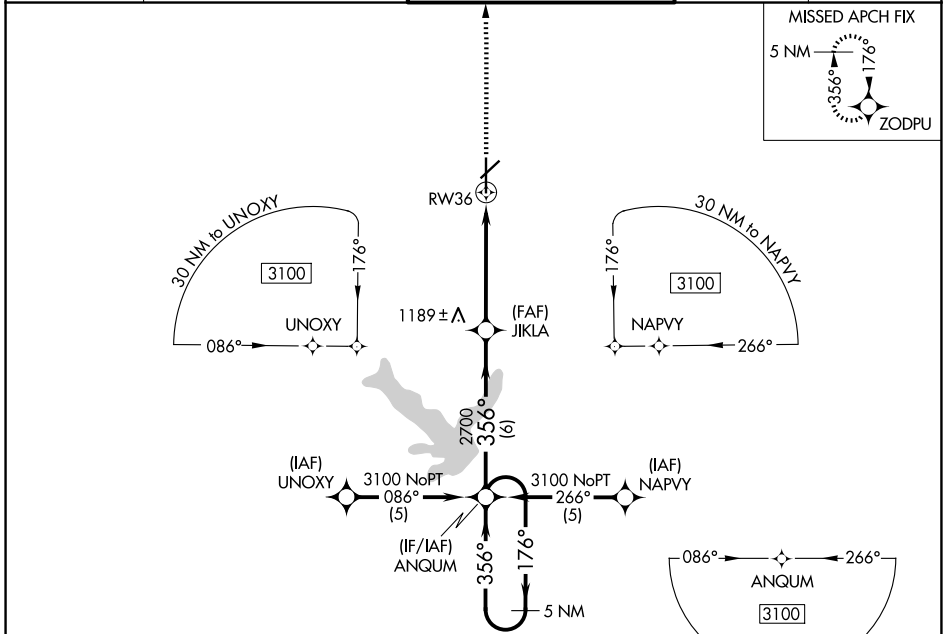
RNAV (GPS) RWY 36

NEW CENTURY AIRCENTER (IXD)

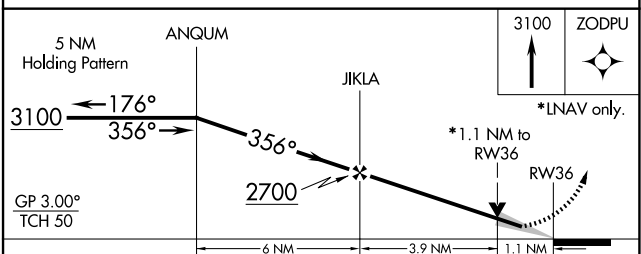
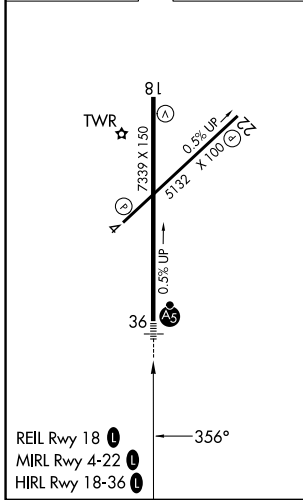
⚠ DME/DME RNP-0.3 NA. For inop MALS, increase LNAV Cat D visibility to 1½ and LPV visibility to 1 all Cats. If local altimeter setting not received, use Johnson County Exec altimeter setting and increase all DA/MDAs 20 feet. VDP NA with Johnson County Exec altimeter setting.

MALS
 MISSED APPROACH: Climb to 3100 direct ZODPU and hold.

| | | | | |
|------------------------|---|--|-------------------------|-------------------------|
| ASOS 135.325 | KANSAS CITY APP CON 118.9 251.075 | NEW CENTURY TOWER * 133.0 (CTAF) 0 | GND CON 124.3 | UNICOM 122.95 |
|------------------------|---|--|-------------------------|-------------------------|



| | |
|------------------|------------------|
| ELEV 1087 | TDZE 1066 |
|------------------|------------------|



| CATEGORY | A | B | C | D |
|--------------|--------------------|---|----------------------|---|
| LPV DA | 1316-½ 250 (300-½) | | | |
| LNAV/VNAV DA | NA | | | |
| LNAV MDA | 1440-½ 374 (400-½) | | 1440-1 374 (400-1) | |
| CIRCLING | 1560-1 473 (500-1) | | 1580-1½ 493 (500-1½) | |
| | | | 1640-2 553 (600-2) | |

OLATHE, KANSAS
Amdt 2A 30JAN20

38°50'N-94°53'W

NEW CENTURY AIRCENTER (IXD) RNAV (GPS) RWY 36

NC-2, 19 MAR 2026 to 16 APR 2026

NC-2, 19 MAR 2026 to 16 APR 2026