

DENVER, COLORADO

AL-9077 (FAA)

FIG

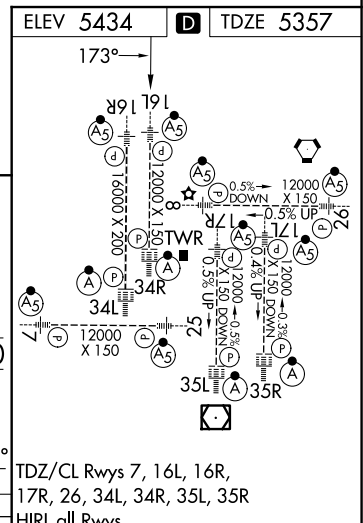
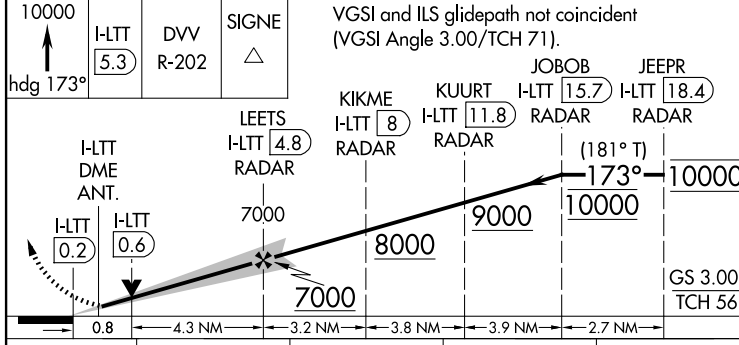
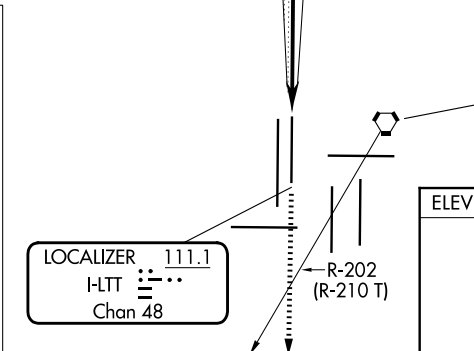
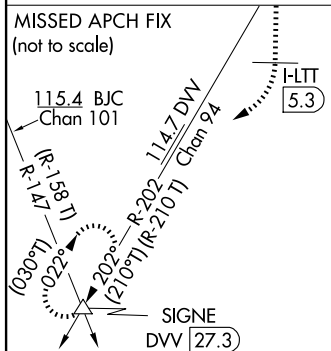
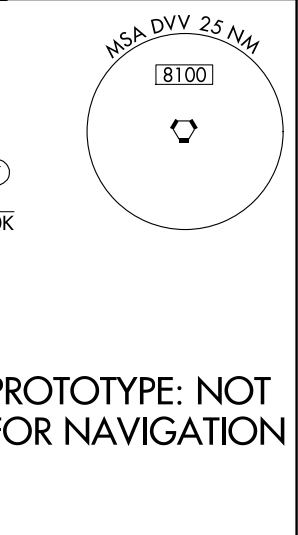
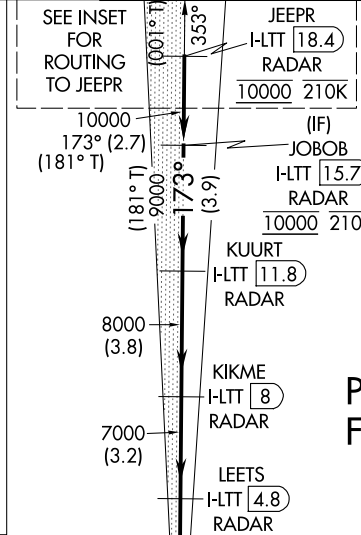
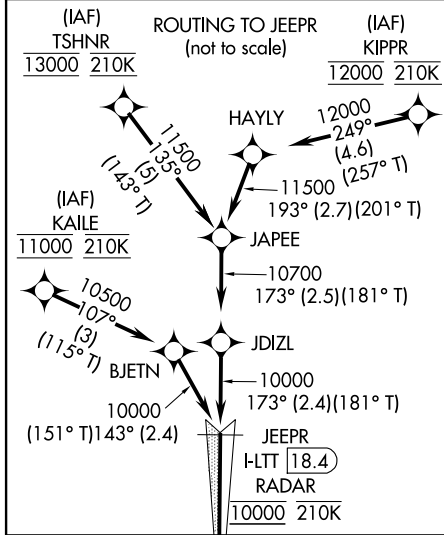
LOC/DME I-LTT 111.1 Chan 48	APP CRS 173°	Rwy Ldg TDZE 12000 5357 Apt Elev 5434
---	------------------------	---

ILS or LOC RWY 16L

DENVER INTL (DEN)

RNP APCH-GPS. From KAILE, KIPPR and TSNER.
DME or RADAR required.
MALSRL MISSED APPROACH: Climb to 10000 on heading 173° to I-LTT 5.3 DME and DVV VORTAC R-202 to SINGE INT/DVV 27.3 DME and hold.

D-ATIS 125.6 379.9	DENVER APP CON 119.3 307.3 (N) 120.35 379.3 (S)	DENVER TOWER 135.3 351.95	GND CON 121.35 379.175 (W) 121.85 377.1 (E)
------------------------------	---	-------------------------------------	---



CATEGORY	A	B	C	D
S-ILS 16L		5557/18 200 (200-1/2)		
S-LOC 16L		5660/24 303 (300-1/2)		

FAF to MAP 5 NM					
Knots	60	90	120	150	180
Min:Sec	5:00	3:20	2:30	2:00	1:40

DENVER, COLORADO
Amdt 4 FIG

39°52'N-104°40'W

DENVER INTL (DEN) ILS or LOC RWY 16L

AUTOMATED AL-9077 ILS or LOC RWY 16L

SW-1
28 AUG 2025
COMPILER: CG
REVIEWER:
DBL CHKR:
EFF: FIG