

Flight Procedures Cover Page	Task Action: FLIGHT CHECK	Task Type: IAP	Estimated Chart Date: 11/27/2025	APWS Task ID: F55BE62EFB06442AABA5FD721E0B77EC	APWS Project ID: DCD2253DF8E946B6A92CF89EBE6A66EC
Procedure: RNAV (GPS) Y RWY 16 AMDT 4		Enroute: NO	Specialist: Clark, Jacob		Agreement Number:
Airport ID: KBLI			Airport City: BELLINGHAM		State: WA
Facility ID:	Facility Type:	Flight Inspection Remark Type: New FC Slot			

Procedure Comments:

ACTIVE AIRNAV DATA USED FOR KBLI AIRPORT AND RUNWAYS.

WHATCOM VORTAC VOR MON DECOMMISSION.

CONTACT CASIMIR TABAKA, AJV-A432, 405-202-7857.

10/02/25: THIS IS A CORRECTED COPY OF THE FORM APPROVED ON 9/30/25.

1. CHANGED NOTE FROM "CHART NOTE: **RVR 1800 AUTHORIZED WITH USE OF FD OR AP OR HUD TO DA (NA WHEN USING FHR ALTIMETER SETTING)." TO "CHART NOTE: **RVR 1800 AUTHORIZED WITH USE OF FD OR AP OR HUD TO DA."
2. PART C: ADDED NOTE "**RVR 1800 NA WHEN USING FHR ALTIMETER SETTING."



WAAS CH 45999 W16A	APP CRS 164°	Rwy Idg TDZE 163 Apt Elev 171
--	------------------------	---

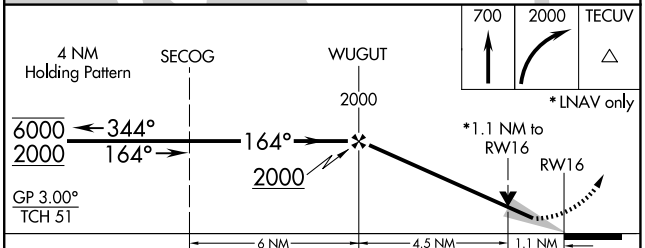
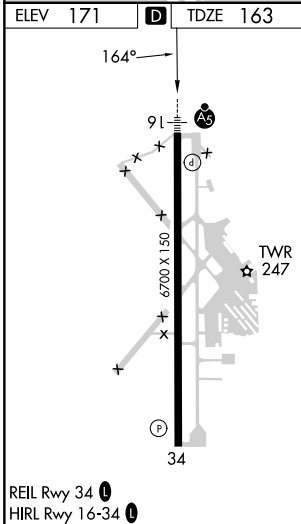
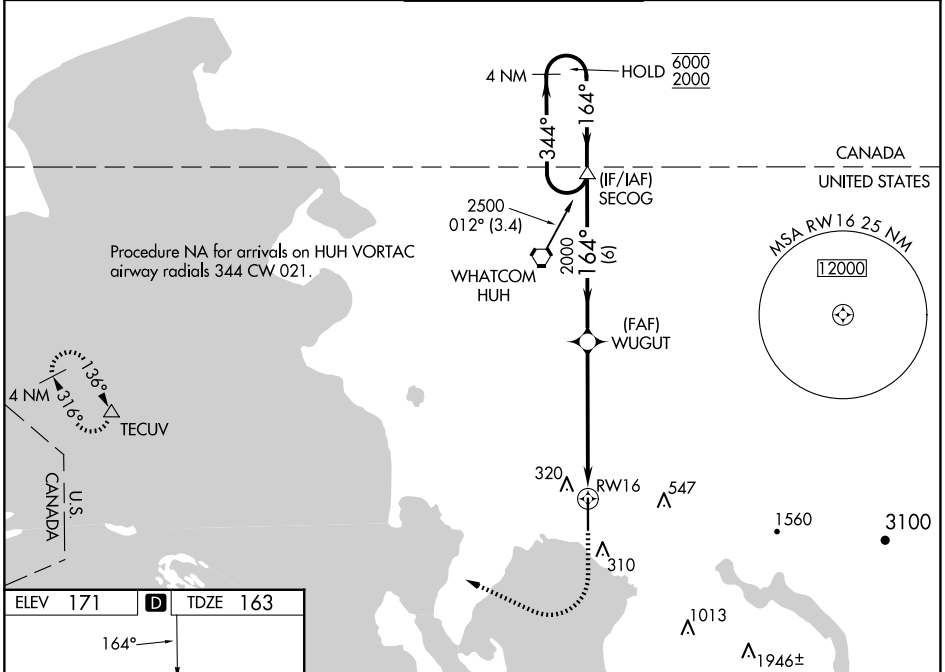
OLD

RNAV (GPS) Y RWY 16

BELLINGHAM INTL (BLI)

RNP APCH. A For uncompensated Baro-VNAV systems, LNAV/VNAV NA below -10°C or above 54°C. #RVR 1800 authorized with use of FD or AP or HUD to DA.	MALS R 	MISSED APPROACH: Climb to 700 then climbing right turn to 2000 direct TECUV and hold.
--	------------	--

ATIS 134.45	VICTORIA TERMINAL APP CON 132.7 290.8	BELLINGHAM TOWER ★ 124.9 (CTAF) 0 379.3	GND CON 127.4 379.3	UNICOM 122.95
-----------------------	---	---	-------------------------------	-------------------------



CATEGORY	A	B	C	D
LPV DA #		363/24	200 (200-½)	
LNAV/VNAV DA		491/30	328 (400-¾)	
LNAV MDA	560/24	397 (400-½)	560/35	397 (400-¾)
C CIRCLING	640-1	469 (500-1)	900-2 729 (800-2)	1160-3 989 (1000-3)

NW-1, 20 MAR 2025 to 17 APR 2025

NW-1, 20 MAR 2025 to 17 APR 2025

BELLINGHAM, WASHINGTON

AL-45 (FAA)

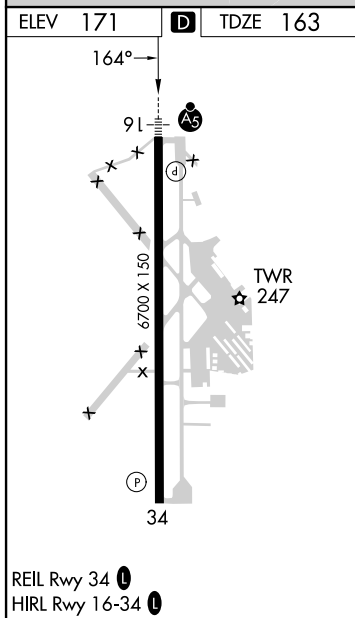
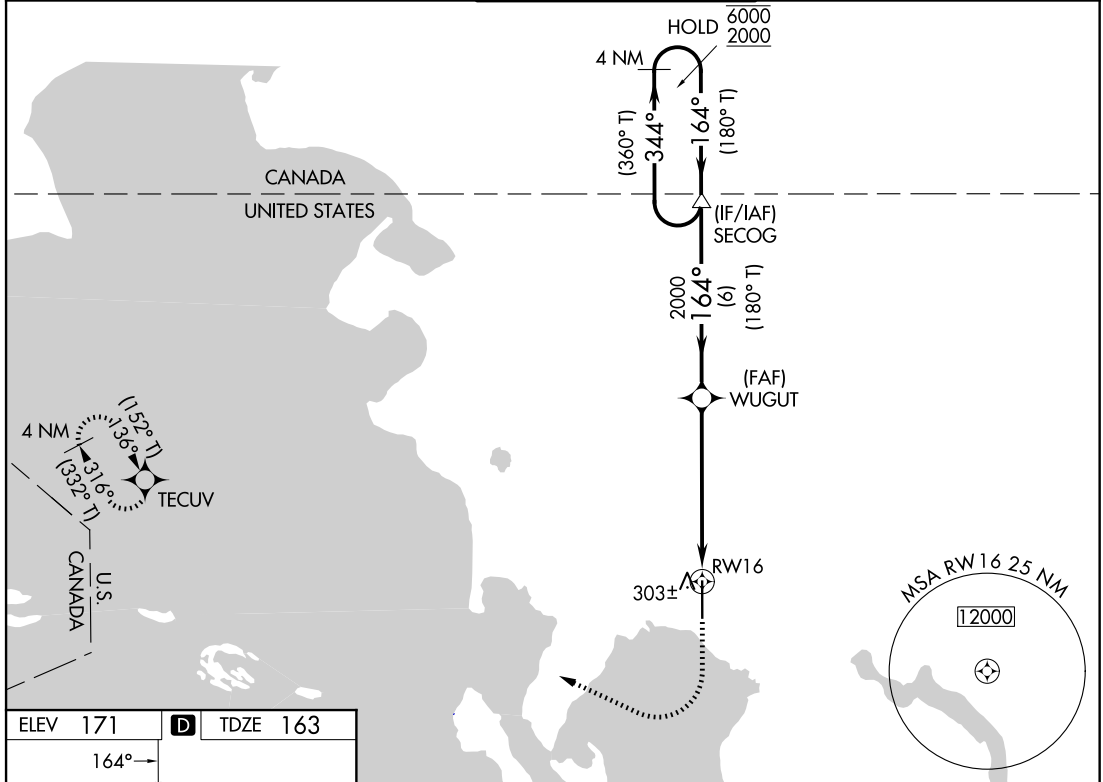
FIG

WAAS CH 45999 W16A	APP CRS 164°	Rwy Ldg TDZE 163 Apt Elev 171
---------------------------------	------------------------	--

RNAV (GPS) Y RWY 16

BELLINGHAM INTL (BLI)

RNP APCH - GPS.		MALSRL	MISSED APPROACH: Climb to 700 then climbing right turn to 2000 direct TECUV and hold.	
<p>⚠ For uncompensated Baro-VNAV systems, LNAV/VNAV NA below -10°C or above 54°C. *RVR 1800 authorized with use of FD or AP or HUD to DA. (NA when using FHR altimeter setting.)</p>				
ATIS 134.45	VICTORIA TERMINAL APP CON 132.7	BELLINGHAM TOWER★ 124.9 (CTAF) 0 379.3	GND CON 127.4 379.3	UNICOM 122.95



	4 NM Holding Pattern	SECOG	WUGUT	TECUV
	6000	2000	2000	700
	(360° T)	(180° T)	(180° T)	TECUV
	344°	164°	164°	
	(180° T)	(180° T)		
	GP 3.00°			
	TCH 51			
	6 NM	4.5 NM	1.1 NM	
CATEGORY	A	B	C	D
LPV DA*	363/24 200 (200-½)			
LNAV/VNAV DA	486/26 323 (400-½)			
LNAV MDA	560/24	397 (400-½)	560/35	397 (400-⅝)
CIRCLING	640-1	469 (500-1)	860-2 689 (700-2)	1140-3 969 (1000-3)

AUTOMATED AL-45 RNAV (GPS) Y RWY 16

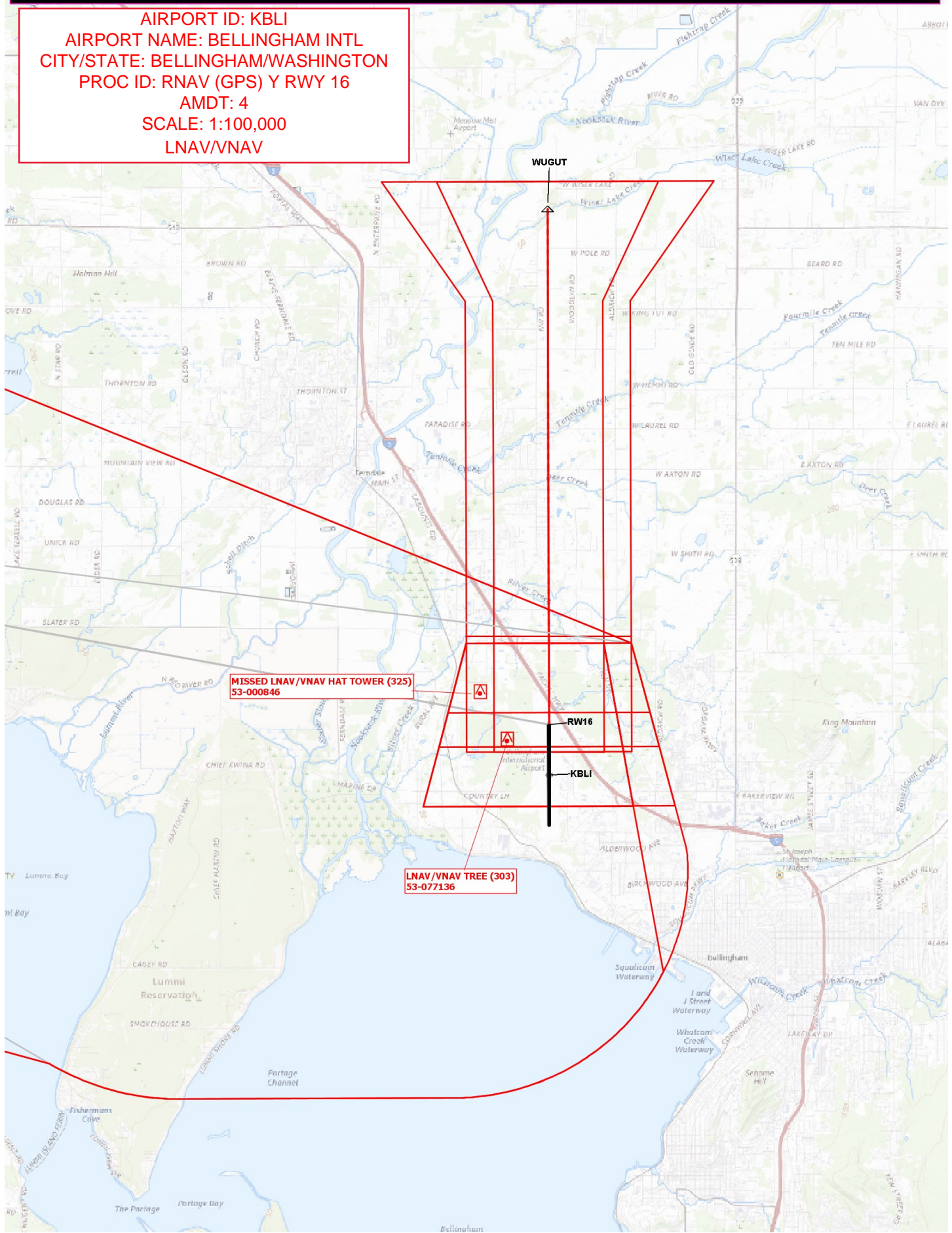
NW-1
17 JUN 2025
COMPILER: CG
REVIEWER:
DBL CHKR:
EFF: FIG

BELLINGHAM, WASHINGTON
Amdt 4 FIG

48°48'N-122°32'W

BELLINGHAM INTL (BLI)
RNAV (GPS) Y RWY 16

AIRPORT ID: KBLI
AIRPORT NAME: BELLINGHAM INTL
CITY/STATE: BELLINGHAM/WASHINGTON
PROC ID: RNAV (GPS) Y RWY 16
AMDT: 4
SCALE: 1:100,000
LNAV/VNAV



AIRPORT ID: KBLI
AIRPORT NAME: BELLINGHAM INTL
CITY/STATE: BELLINGHAM/WASHINGTON
PROC ID: RNAV (GPS) Y RWY 16
AMDT: 4
SCALE: 1:500,000
IAF, IF, FINAL, MA, HOLD

