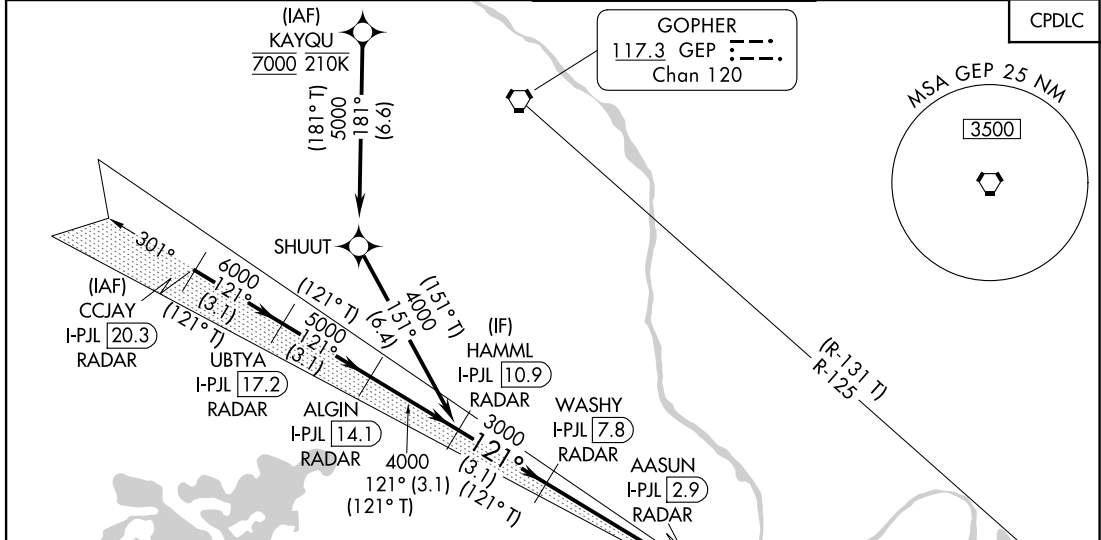


LOC/DME I-PJL <b>110.7</b> Chan <b>44</b>	APP CRS <b>121°</b>	Rwy Ldg TDZE Apt Elev	<b>7620</b> <b>841</b> <b>842</b>
---	------------------------	-----------------------------	---

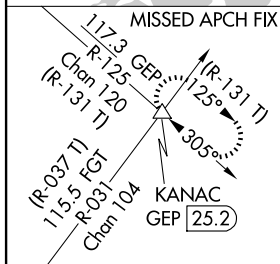
# ILS or LOC RWY 12L

MINNEAPOLIS-ST PAUL INTL/WOLD-CHAMBERLAIN (MSP)

RNP APCH - GPS. From KAYQU DME or RADAR required.		ALSIF-2	MISSED APPROACH: Climb to 1300, then climbing left turn to 3000 on heading 073° and GEP R-125 to KANAC INT/GEP 25.2 DME and hold, continue climb-in-hold to 3000.	
⚠ Simultaneous approach authorized with Rwy 12R. For inop ALS, increase S-LOC 12L Cat C/D visibility to RVR 5500. Inop table does not apply to S-ILS 12L.				
D-ATIS ARR <b>135.35 239.275</b> DEP <b>120.8</b>	MINNEAPOLIS APP CON <b>118.725 335.65</b> (Rwy 35) <b>119.3 335.65</b> (12L-30R, 4-22, 17) <b>126.95 335.65</b> (12R-30L)	MINNEAPOLIS TOWER <b>123.675 273.55</b> (17-35) <b>123.95 273.55</b> (12L-30R) <b>126.7 273.55</b> (12R-30L, 4-22)	GND CON <b>N 121.8 348.6</b> <b>S 121.9 348.6</b> <b>W 127.925 348.6</b>	CLNC DEL <b>133.2</b>

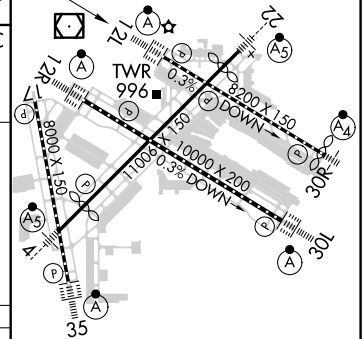
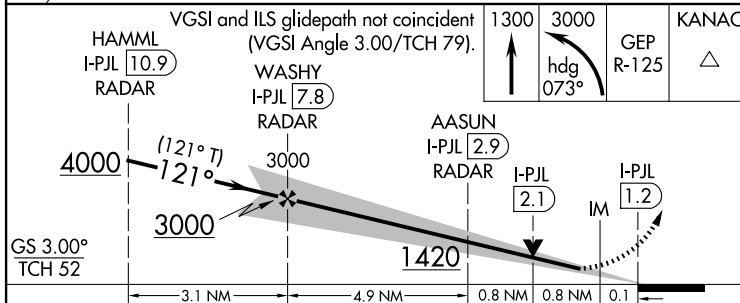


**PROTOTYPE: NOT FOR NAVIGATION**



LOCALIZER <b>110.7</b> I-PJL Chan <b>44</b>
---

ELEV <b>842</b>	<b>D</b>	TDZE <b>841</b>
-----------------	----------	-----------------



CATEGORY	A	B	C	D
S-ILS 12L	1041/18 200 (200-½)			
S-LOC 12L	1220/24 379 (400-½)	1220/35 379 (400-¾)		
CIRCLING	1360-1 518 (600-1)	1460-1¾ 618 (700-1¾)	1620-2½ 778 (800-2½)	
HIRL all Rwys REIL Rwy 17 TDZ/CL Rwys 12L, 12R, 30L, and 35 FAF to MAP 6.6 NM				
Knots 60 90 120 150 180 Min:Sec 6:36 4:24 3:18 2:38 2:12				

AUTOMATED AL-264 ILS or LOC RWY 12L

NC-1  
23 MAY 2025  
COMPILER: CG  
REVIEWER:  
DBL CHKR:  
EFF: FIG