

MINNEAPOLIS, MINNESOTA

AL-264 (FAA)

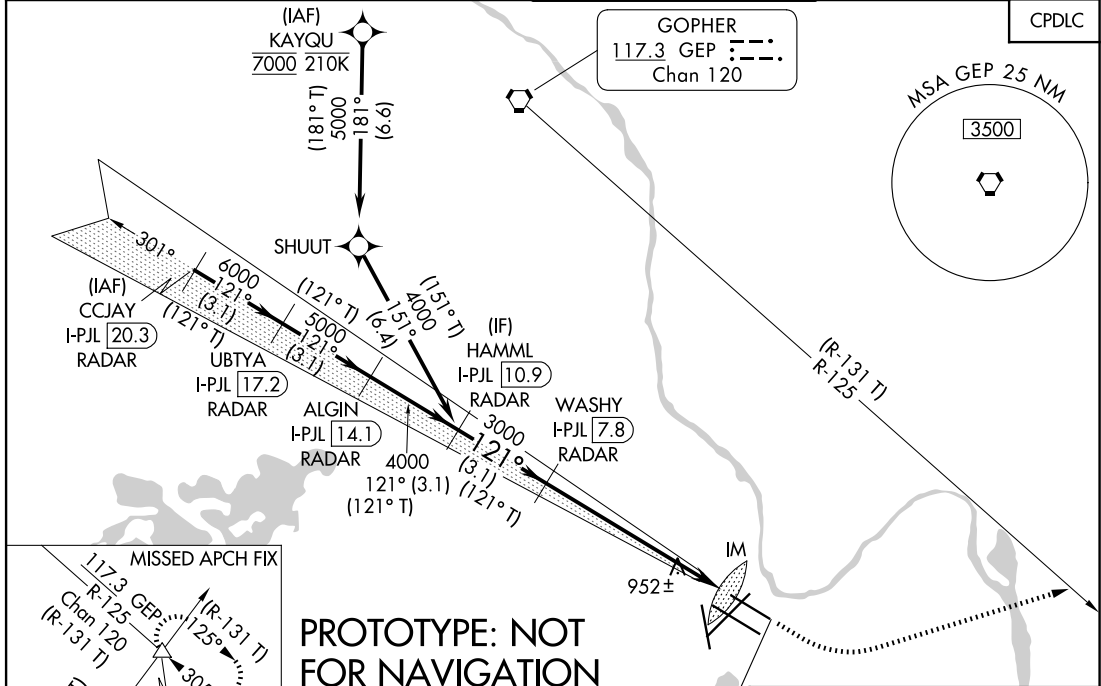
FIG

LOC/DME I-PJL 110.7 Chan 44	APP CRS 121°	Rwy Ldg TDZE Apt Elev	7620 841 842
---	------------------------	-----------------------------	---

ILS RWY 12L (SA CAT I)

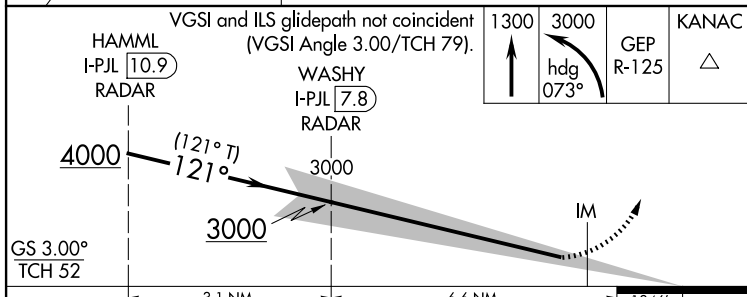
MINNEAPOLIS-ST PAUL INTL/WOLD-CHAMBERLAIN (MSP)

RNP APCH - GPS. From KAYQU DME or RADAR required.		ALSIF-2	MISSED APPROACH: Climb to 1300, then climbing left turn to 3000 on heading 073° and GEP R-125 to KANAC INT/GEP 25.2 DME and hold, continue climb-in-hold to 3000.	
<p>Simultaneous approach authorized with Rwy 12R. Requires specific OPSPEC, MSPEC, or LOA approval and use of HUD to DH.</p>				
D-ATIS ARR 135.35 239.275 DEP 120.8	MINNEAPOLIS APP CON 118.725 335.65 (Rwy 35) 119.3 335.65 (12L-30R, 4-22, 17) 126.95 335.65 (12R-30L)	MINNEAPOLIS TOWER 123.675 273.55 (17-35) 123.95 273.55 (12L-30R) 126.7 273.55 (12R-30L, 4-22)	GND CON N 121.8 348.6 S 121.9 348.6 W 127.925 348.6	CLNC DEL 133.2



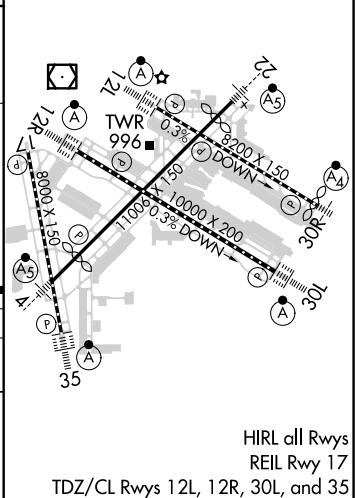
PROTOTYPE: NOT FOR NAVIGATION

LOCALIZER 110.7 I-PJL Chan 44	ELEV 842	D TDZE 841
---	-----------------	--------------------------



CATEGORY	A	B	C	D
S-ILS 12L	RA 147/14 150 DA 991			

SA CATEGORY I ILS - SPECIAL AIRCREW & AIRCRAFT CERTIFICATION REQUIRED



HIRL all Rwys
REIL Rwy 17
TDZ/CL Rwys 12L, 12R, 30L, and 35

AUTOMATED AL-264 ILS RWY 12L (SA CAT I)

NC-1
23 MAY 2025
COMPILER: CG
REVIEWER:
DBL CHKR:
EFF: FIG

MINNEAPOLIS, MINNESOTA
Amdt 12 FIG

MINNEAPOLIS-ST PAUL INTL/WOLD-CHAMBERLAIN (MSP)
44°53'N-93°13'W
ILS RWY 12L (SA CAT I)