

DME DME Assessment Results for DADES2 path BAAMF_GSPAR

Results Summary	
Flyability:	Completed
DME/DME:	Completed - No Critical DMEs
Name:	Mark CTR Thompson
Project File:	C:\Users\Mark CTR Thompson\OneDrive - Federal Aviation Administration\Desktop\RNAV Projects\RNAV Projects 2025\TPA.SRQ STARS_250417\KTPA DADES2 (RNAV) STAR\DME\KTPA DADES2 (RNAV) STAR DME_240904.tgs
Output File:	C:\Users\Mark CTR Thompson\OneDrive - Federal Aviation Administration\Desktop\RNAV Projects\RNAV Projects 2025\TPA.SRQ STARS_250417\KTPA DADES2 (RNAV) STAR\DME\KTPA [IFPA] DADES2 20240904_0741 EDT\BAAMF_GSPAR\KTPA DADES2 RNAV STAR BAAMF GSPAR 20240904_0741 EDT.pdf
Procedure Name:	DADES2
Software: DmeDmePlugin:	7.3.3
Date/Time:	09/04/2024 07:41 EDT
Databases:	MITRE 3DEP 3 arcsec

Failures
No Failures

Warnings
No Warnings

Informational
No Informational

Notes For Flight Check
None

Flight Plan							
Name	Type	Lat/Lon	Altitude (ft)	VNAV Mode	Ground Speed (kts)	Turn Type	Leg Type
BAAMF	WP	N30° 40' 13.18", W082° 19' 02.47"	5000	VNAV	200	FLY_BY	TF
CORYY	WP	N30° 10' 15.89", W082° 22' 46.33"	5000	VNAV	200	FLY_BY	TF
CAPOH	WP	N29° 35' 15.58", W082° 20' 49.56"	5000	VNAV	200	FLY_BY	TF
EDISN	WP	N29° 24' 14.67", W082° 20' 13.11"	5000	VNAV	200	FLY_BY	TF
OLENE	WP	N28° 44' 23.26", W082° 15' 28.85"	5000	VNAV	200	FLY_BY	TF
MARVI	WP	N28° 38' 21.83", W082° 15' 23.32"	5000	VNAV	200	FLY_BY	TF
KOKOH	WP	N28° 31' 34.74", W082° 15' 15.54"	5000	VNAV	200	FLY_BY	TF
DADES	WP	N28° 21' 45.62", W082° 15' 07.80"	5000	VNAV	200	FLY_BY	TF
GSPAR	WP	N28° 18' 15.28", W082° 15' 10.16"	4000	VNAV	200	FLY_OVER	TF

Flyability	
Flight Type:	RNAV_STAR
Selected Airport:	KTPA [IFPA]
Climb Gradient:	None assigned
Speeds:	200 Ground Speed to 11000 FT
	240 Ground Speed to 18000 FT
	260 Ground Speed to 24000 FT
	340 Ground Speed above 24000 FT
Descent During a Turn:	Allowed
VNAV Mode:	Flight Plan

DME DME Assessment Results for DADES2 path BAAMF_GSPAR

DME/DME	
RNP:	RNP 2
Flight Mode:	Manual
Line of Sight (DTED Level 0 Max):	Evaluated
Inertial Drift:	Enabled
Initial Drift:	0.558 NM
INS Drift Rate:	8.0 NM/Hour
Range Mode:	OSV
RNP Edges:	Evaluated
Min DME Range:	3.0 NM
DME Types:	DME, VOR-DME, VORTAC
DME Include Angles:	30 to 150
Critical DMEs:	Allowed
DoD Facilities:	Not included
Foreign Facilities:	Included
High DMEs:	Included
Low DMEs:	Included
Terminal DMEs:	Included
Flight Check DMEs:	Not selected
Higher Altitudes:	Not Evaluated
Near Maximum Altitude:	Not Evaluated
Automatic ESVs:	Not enabled
Disabled DMEs:	None

DME/DME (Continued)										
DMEs Used										
#	Name	Lat/Lon	MAGVAR	Range	Type	Source	Critical	Status	Time	Distance
1	TAY	N30° 30' 16.70", W082° 33' 10.45"	3.0 W	130	H	IFPA	NO	Enabled		
2	LAL	N27° 59' 10.31", W082° 00' 50.06"	1.0 E	130	H	IFPA	NO	Enabled		
3	CRG	N30° 20' 19.97", W081° 30' 35.74"	3.0 W	130	H	IFPA	NO	Enabled		
4	SRQ	N27° 24' 25.26", W082° 33' 49.18"	5.0 W	130	DH	IFPA	NO	Enabled		
5	OMN	N29° 18' 11.70", W081° 06' 45.71"	0.0 E	130	H	IFPA	NO	Enabled		
6	GNV	N29° 41' 31.61", W082° 16' 22.70"	4.0 W	40	L	IFPA	NO	Enabled		
7	PIE	N27° 54' 27.95", W082° 41' 03.51"	5.0 W	130	H	IFPA	NO	Enabled		
8	CTY	N29° 35' 56.40", W083° 02' 55.65"	2.0 W	40	L	IFPA	NO	Enabled		
9	OCF	N29° 10' 38.92", W082° 13' 34.80"	0.0 E	40	L	IFPA	NO	Enabled		
10	AYS	N31° 16' 09.93", W082° 33' 23.20"	0.0 E	40	L	IFPA	NO	Enabled		
11	ORL	N28° 32' 33.80", W081° 20' 06.05"	0.0 E	130	H	IFPA	NO	Enabled		

DME DME Assessment Results for DADES2 path BAAMF_GSPAR

Flight Check DME Selection						
Distance [NM]	Selected DMEs					Alternate
0.0	TAY [IFPA]	AYS [IFPA]	CRG [IFPA]	GNV [IFPA]		
10.8	GNV [IFPA]	TAY [IFPA]	CRG [IFPA]	AYS [IFPA]	CTY [IFPA]	
23.1	CRG [IFPA]	GNV [IFPA]	CTY [IFPA]	TAY [IFPA]		
27.6	CRG [IFPA]	GNV [IFPA]	TAY [IFPA]			
42.2	CRG [IFPA]	GNV [IFPA]	TAY [IFPA]	CTY [IFPA]		
46.7	CTY [IFPA]	GNV [IFPA]	TAY [IFPA]			
47.8	CTY [IFPA]	GNV [IFPA]				
51.0	CTY [IFPA]	GNV [IFPA]	OCF [IFPA]			
56.0	CTY [IFPA]	OCF [IFPA]				
63.4	CTY [IFPA]	OCF [IFPA]	GNV [IFPA]			
64.2						
69.7	CTY [IFPA]	GNV [IFPA]	OCF [IFPA]			
77.1	CTY [IFPA]	GNV [IFPA]				
79.1						
99.8	OMN [IFPA]	OCF [IFPA]				
101.7	ORL [IFPA]	OCF [IFPA]	OMN [IFPA]			
114.3	ORL [IFPA]	OCF [IFPA]				
121.9	ORL [IFPA]	OCF [IFPA]	SRQ [IFPA]			
124.8	ORL [IFPA]	OCF [IFPA]	SRQ [IFPA]	LAL [IFPA]		
129.3	ORL [IFPA]	SRQ [IFPA]	LAL [IFPA]			
136.3	ORL [IFPA]	LAL [IFPA]	PIE [IFPA]	SRQ [IFPA]		

Inertial Drift Segments			
#	Start Location	End Location	Length [NM]
1	N29° 36' 02.26", W082° 20' 52.14"	N29° 30' 33.29", W082° 20' 33.98"	5.4777
2	N29° 21' 12.01", W082° 19' 51.27"	N29° 00' 29.84", W082° 17' 23.30"	20.763

Available DMEs by Waypoints			
Waypoint Before	Waypoint After	DME List	Suggested DMEs
BAAMF	CORYY	TAY [IFPA], CRG [IFPA], GNV [IFPA], CTY [IFPA], AYS [IFPA]	
CORYY	CAPOH	TAY [IFPA], CRG [IFPA], GNV [IFPA], CTY [IFPA], OCF [IFPA]	
CAPOH	EDISN	GNV [IFPA], CTY [IFPA], OCF [IFPA]	
EDISN	OLENE	OMN [IFPA], GNV [IFPA], CTY [IFPA], OCF [IFPA], ORL [IFPA]	
OLENE	MARVI	SRQ [IFPA], OCF [IFPA], ORL [IFPA]	
MARVI	KOKOH	LAL [IFPA], SRQ [IFPA], OCF [IFPA], ORL [IFPA]	
KOKOH	DADES	LAL [IFPA], SRQ [IFPA], PIE [IFPA], OCF [IFPA], ORL [IFPA]	
DADES	GSPAR	LAL [IFPA], SRQ [IFPA], PIE [IFPA], ORL [IFPA]	

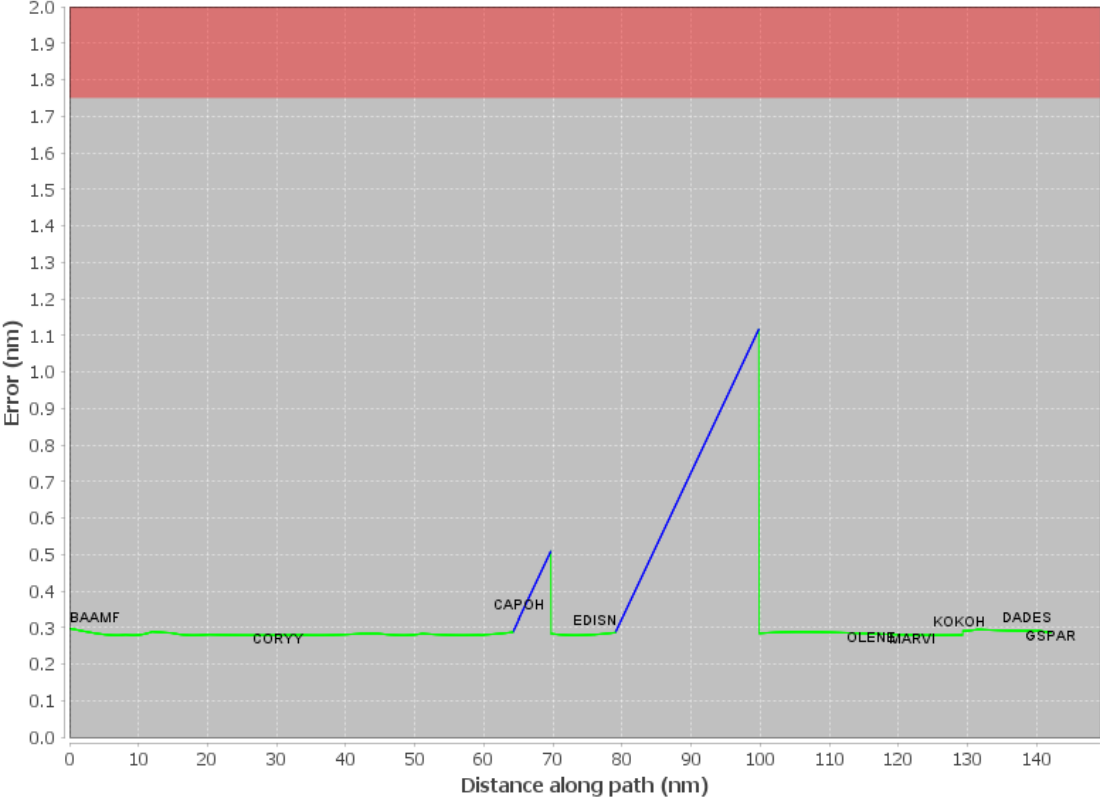
DME DME Assessment Results for DADES2 path BAAMF_GSPAR

User Data Files								
#	File Name							
None								
User DMEs								
#	Name	Lat/Lon	MAGVAR	Range	Elevation [ft]	Frequency	Replaces	Status
1	ORL FAA 694096-44 ORL [IFPA]	N28° 32' 33.80", W081° 20' 06.05"	0.0 E	130	101.6	112.2	ORL FAA 694096-44	
ESV:		Bearing [True]: 250.0° to 300.0° Bearing [Mag]: 250.0° to 300.0°				Arc Distance: Out to 78.0 NM Altitude: 4000.0 to 14700.0 ft		
2	CTY FAA 704013-38 CTY [IFPA]	N29° 35' 56.40", W083° 02' 55.65"	2.0 W	40	33.8	112.0	CTY FAA 704013-38	
ESV:		Bearing [True]: 55.0° to 90.0° Bearing [Mag]: 57.0° to 92.0°				Arc Distance: Out to 60.0 NM Altitude: 4000.0 to 14500.0 ft		
3	CRG FAA 698166-35 CRG [IFPA]	N30° 20' 19.97", W081° 30' 35.74"	3.0 W	130	41.9	114.5	CRG FAA 698166-35	
ESV:		Bearing [True]: 237.0° to 300.0° Bearing [Mag]: 240.0° to 303.0°				Arc Distance: Out to 61.0 NM Altitude: 2900.0 to 14600.0 ft		
4	CTY FAA 704013-60 CTY [IFPA]	N29° 35' 56.40", W083° 02' 55.65"	2.0 W	40	33.8	112.0	CTY FAA 704013-60	
ESV:		Bearing [True]: 97.0° to 114.0° Bearing [Mag]: 99.0° to 116.0°				Arc Distance: Out to 55.0 NM Altitude: 2900.0 to 18100.0 ft		
5	OCF FAA 714002-35 OCF [IFPA]	N29° 10' 38.92", W082° 13' 34.80"	0.0 E	40	78.3	113.7	OCF FAA 714002-35	
ESV:		Bearing [True]: 70.0° to 180.0° Bearing [Mag]: 70.0° to 180.0°				Arc Distance: Out to 80.0 NM Altitude: 5000.0 to 18000.0 ft		
6	GNV FAA 704230-51 GNV [IFPA]	N29° 41' 31.61", W082° 16' 22.70"	4.0 W	40	127.5	116.2	GNV FAA 704230-51	
ESV:		Bearing [True]: 114.0° to 122.0° Bearing [Mag]: 118.0° to 126.0°				Arc Distance: Out to 70.0 NM Altitude: 4900.0 to 18200.0 ft		
7	OMN FAA 694106-20 OMN [IFPA]	N29° 18' 11.70", W081° 06' 45.71"	0.0 E	130	24	112.6	OMN FAA 694106-20	
ESV:		Bearing [True]: 190.0° to 255.0° Bearing [Mag]: 190.0° to 255.0°				Arc Distance: Out to 72.0 NM Altitude: 3000.0 to 14600.0 ft		
8	OMN FAA 694106-62 OMN [IFPA]	N29° 18' 11.70", W081° 06' 45.71"	0.0 E	130	24	112.6	OMN FAA 694106-62	
ESV:		Bearing [True]: 94.0° to 120.0° Bearing [Mag]: 94.0° to 120.0°				Arc Distance: Out to 85.0 NM Altitude: 9900.0 to 14600.0 ft		
9	CTY FAA 704013-58 CTY [IFPA]	N29° 35' 56.40", W083° 02' 55.65"	2.0 W	40	33.8	112.0	CTY FAA 704013-58	
ESV:		Bearing [True]: 6.0° to 47.0° Bearing [Mag]: 8.0° to 49.0°				Arc Distance: Out to 67.0 NM Altitude: 4900.0 to 18100.0 ft		
10	ORL FAA 694096-78 ORL [IFPA]	N28° 32' 33.80", W081° 20' 06.05"	0.0 E	130	101.6	112.2	ORL FAA 694096-78	
ESV:		Bearing [True]: 63.0° to 78.0° Bearing [Mag]: 63.0° to 78.0°				Arc Distance: Out to 99.0 NM Altitude: 8500.0 to 14700.0 ft		
11	LAL FAA 704224-41 LAL [IFPA]	N27° 59' 10.31", W082° 00' 50.06"	1.0 E	130	133.8	116.0	LAL FAA 704224-41	
ESV:		Bearing [True]: 360.0° to 77.0° Bearing [Mag]: 359.0° to 76.0°				Arc Distance: Out to 70.0 NM Altitude: 3000.0 to 14700.0 ft		
12	OMN FAA 694106-23 OMN [IFPA]	N29° 18' 11.70", W081° 06' 45.71"	0.0 E	130	24	112.6	OMN FAA 694106-23	
ESV:		Bearing [True]: 113.0° to 187.0° Bearing [Mag]: 113.0° to 187.0°				Arc Distance: Out to 70.0 NM Altitude: 4000.0 to 18000.0 ft		
13	TRV FAA 704266-83 TRV [IFPA]	N27° 40' 42.26", W080° 29' 23.04"	7.0 W	130	18.9	117.3	TRV FAA 704266-83	
ESV:		Bearing [True]: 351.0° to 33.0° Bearing [Mag]: 358.0° to 40.0°				Arc Distance: Out to 101.0 NM Altitude: 8500.0 to 18100.0 ft		
14	GNV FAA 704230-32 GNV [IFPA]	N29° 41' 31.61", W082° 16' 22.70"	4.0 W	40	127.5	116.2	GNV FAA 704230-32	
ESV:		Bearing [True]: 325.0° to 20.0° Bearing [Mag]: 329.0° to 24.0°				Arc Distance: Out to 75.0 NM Altitude: 4000.0 to 14500.0 ft		
15	OMN FAA 694106-65 OMN [IFPA]	N29° 18' 11.70", W081° 06' 45.71"	0.0 E	130	24	112.6	OMN FAA 694106-65	
ESV:		Bearing [True]: 269.0° to 284.0° Bearing [Mag]: 269.0° to 284.0°				Arc Distance: Out to 61.0 NM Altitude: 2900.0 to 14600.0 ft		
16	AYS FAA 698108-10 AYS [IFPA]	N31° 16' 09.93", W082° 33' 23.20"	0.0 E	40	154.8	110.2	AYS FAA 698108-10	
ESV:		Bearing [True]: 148.0° to 215.0° Bearing [Mag]: 148.0° to 215.0°				Arc Distance: Out to 61.0 NM Altitude: 2900.0 to 18200.0 ft		

DME DME Assessment Results for DADES2 path BAAMF_GSPAR

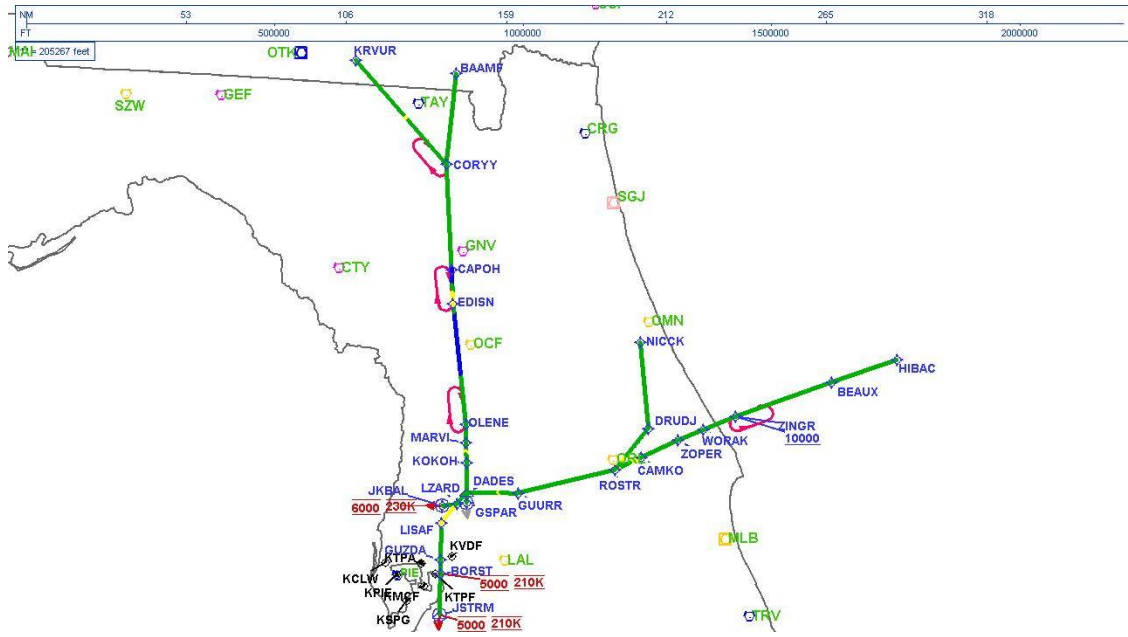
DME DME Assessment Results for DADES2 path BAAMF_GSPAR

DME Error



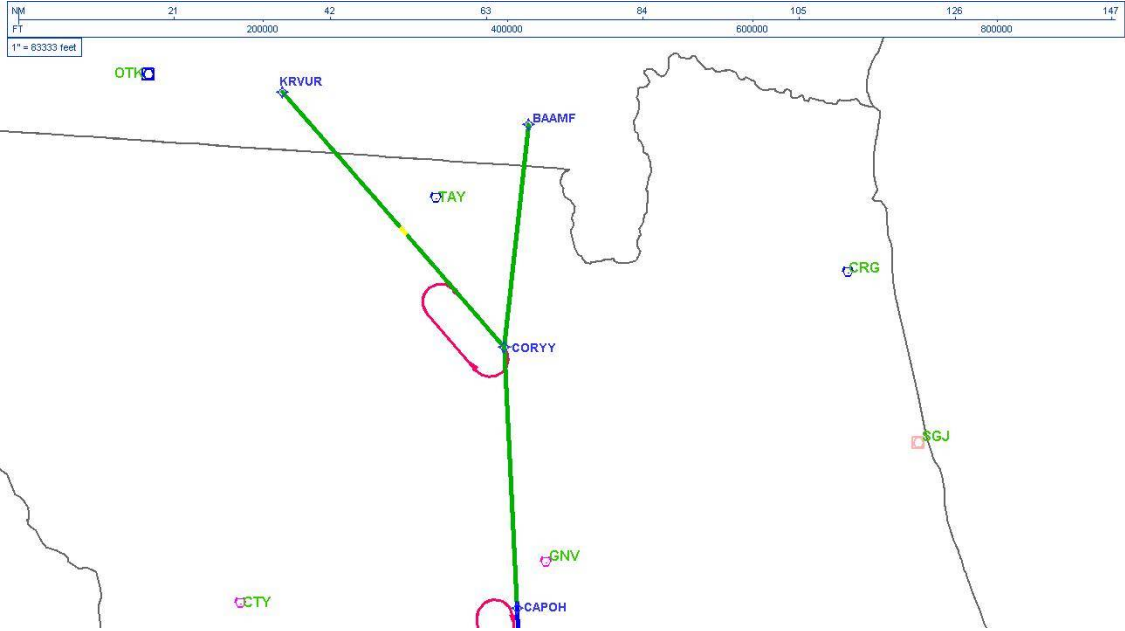
DME DME Assessment Results for DADES2 path BAAMF_GSPAR

Graphic Depiction 2



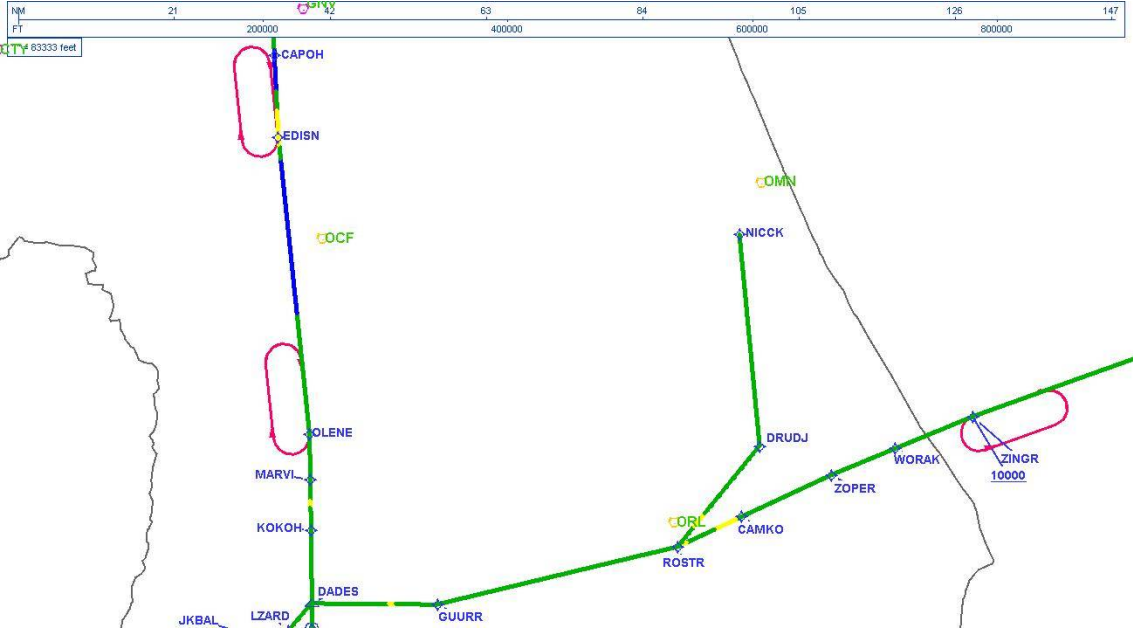
DME DME Assessment Results for DADES2 path BAAMF_GSPAR

Graphic Depiction 3



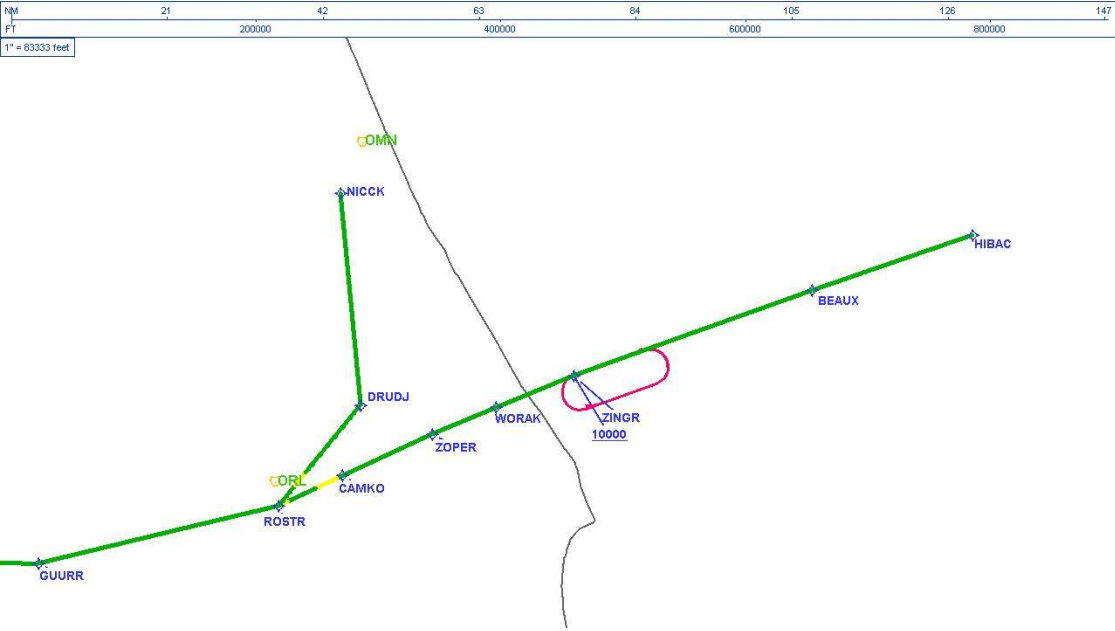
DME DME Assessment Results for DADES2 path BAAMF_GSPAR

Graphic Depiction 4



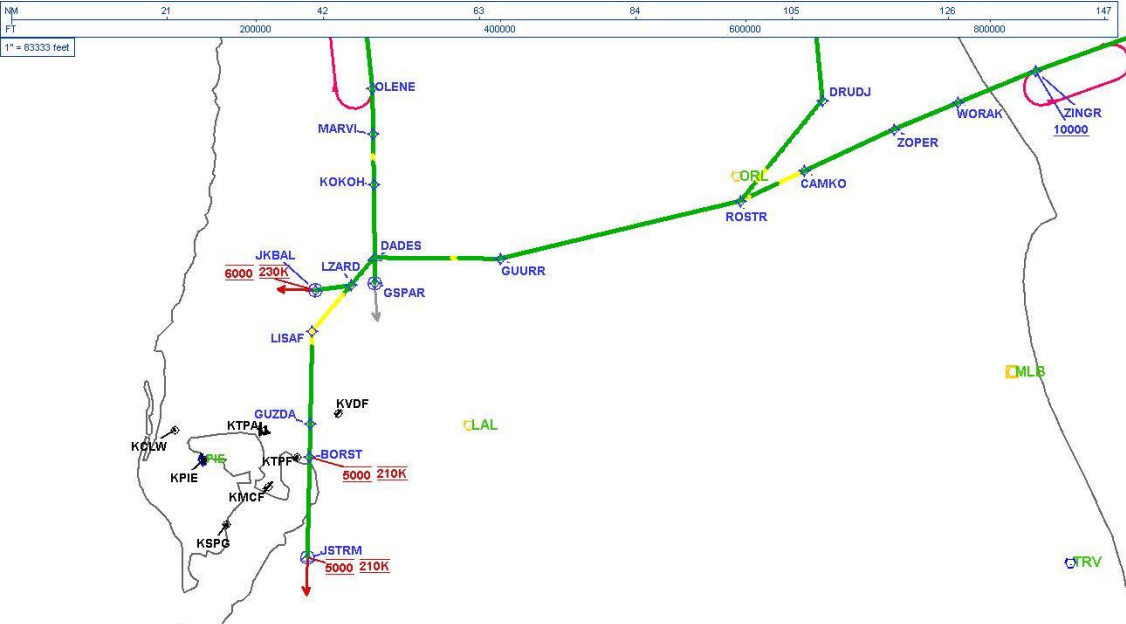
DME DME Assessment Results for DADES2 path BAAMF_GSPAR

Graphic Depiction 5



DME DME Assessment Results for DADES2 path BAAMF_GSPAR

Graphic Depiction 6



DME DME Assessment Results for DADES2 path HIBAC_JSTRM

Flyability	
Flight Type:	RNAV_STAR
Selected Airport:	KTPA [IFPA]
Climb Gradient:	None assigned
Speeds:	200 Ground Speed to 11000 FT
	240 Ground Speed to 18000 FT
	260 Ground Speed to 24000 FT
	340 Ground Speed above 24000 FT
Descent During a Turn:	Allowed
VNAV Mode:	Flight Plan

DME/DME	
RNP:	RNP 2
Flight Mode:	Manual
Line of Sight (DTED Level 0 Max):	Evaluated
Inertial Drift:	Enabled
Initial Drift:	0.558 NM
INS Drift Rate:	8.0 NM/Hour
Range Mode:	OSV
RNP Edges:	Evaluated
Min DME Range:	3.0 NM
DME Types:	DME, VOR-DME, VORTAC
DME Include Angles:	30 to 150
Critical DMEs:	Allowed
DoD Facilities:	Not included
Foreign Facilities:	Included
High DMEs:	Included
Low DMEs:	Included
Terminal DMEs:	Included
Flight Check DMEs:	Not selected
Higher Altitudes:	Not Evaluated
Near Maximum Altitude:	Not Evaluated
Automatic ESVs:	Not enabled
Disabled DMEs:	None

DME/DME (Continued)										
DMEs Used										
#	Name	Lat/Lon	MAGVAR	Range	Type	Source	Critical	Status	Time	Distance
1	LAL	N27° 59' 10.31", W082° 00' 50.06"	1.0 E	130	H	IFPA	NO	Enabled		
2	SRQ	N27° 24' 25.26", W082° 33' 49.18"	5.0 W	130	DH	IFPA	NO	Enabled		
3	TRV	N27° 40' 42.26", W080° 29' 23.04"	7.0 W	130	H	IFPA	NO	Enabled		
4	OMN	N29° 18' 11.70", W081° 06' 45.71"	0.0 E	130	H	IFPA	NO	Enabled		
5	PIE	N27° 54' 27.95", W082° 41' 03.51"	5.0 W	130	H	IFPA	NO	Enabled		
6	OCF	N29° 10' 38.92", W082° 13' 34.80"	0.0 E	40	L	IFPA	NO	Enabled		
7	MLB	N28° 06' 19.12", W080° 38' 06.46"	7.0 W	130	DH	IFPA	NO	Enabled		
8	ORL	N28° 32' 33.80", W081° 20' 06.05"	0.0 E	130	H	IFPA	NO	Enabled		

DME DME Assessment Results for DADES2 path HIBAC_JSTRM

Flight Check DME Selection						
Distance [NM]	Selected DMEs					Alternate
0.0	OMN [IFPA]	TRV [IFPA]	MLB [IFPA]	ORL [IFPA]		
59.4	OMN [IFPA]	ORL [IFPA]	MLB [IFPA]			
73.5	OMN [IFPA]	ORL [IFPA]	MLB [IFPA]	OCF [IFPA]		
77.1	OMN [IFPA]	ORL [IFPA]	MLB [IFPA]	LAL [IFPA]	OCF [IFPA]	
93.4	LAL [IFPA]	MLB [IFPA]	OCF [IFPA]	ORL [IFPA]		
94.0	LAL [IFPA]	MLB [IFPA]	OCF [IFPA]			
98.2	LAL [IFPA]	ORL [IFPA]	OCF [IFPA]	MLB [IFPA]	OMN [IFPA]	
99.2	OCF [IFPA]	LAL [IFPA]	MLB [IFPA]	OMN [IFPA]		
102.2	ORL [IFPA]	MLB [IFPA]	OCF [IFPA]	LAL [IFPA]	OMN [IFPA]	
125.5	LAL [IFPA]	MLB [IFPA]	SRQ [IFPA]	ORL [IFPA]		
138.2	MLB [IFPA]	SRQ [IFPA]	LAL [IFPA]	OCF [IFPA]		
138.3	LAL [IFPA]	ORL [IFPA]	MLB [IFPA]	SRQ [IFPA]		
139.2	OCF [IFPA]	SRQ [IFPA]				
140.3	OCF [IFPA]	SRQ [IFPA]	LAL [IFPA]			
141.3	ORL [IFPA]	LAL [IFPA]	OCF [IFPA]	SRQ [IFPA]		
147.5	ORL [IFPA]	LAL [IFPA]	OCF [IFPA]	PIE [IFPA]	SRQ [IFPA]	
148.1	ORL [IFPA]	LAL [IFPA]	PIE [IFPA]	SRQ [IFPA]		
162.2	LAL [IFPA]	PIE [IFPA]	SRQ [IFPA]			

Inertial Drift Segments			
#	Start Location	End Location	Length [NM]

Available DMEs by Waypoints			
Waypoint Before	Waypoint After	DME List	Suggested DMEs
HIBAC	BEAUX	TRV [IFPA], OMN [IFPA], MLB [IFPA], ORL [IFPA]	
BEAUX	ZINGR	TRV [IFPA], OMN [IFPA], MLB [IFPA], ORL [IFPA]	
ZINGR	WORAK	TRV [IFPA], OMN [IFPA], MLB [IFPA], ORL [IFPA]	
WORAK	ZOPER	OMN [IFPA], OCF [IFPA], MLB [IFPA], ORL [IFPA]	
ZOPER	CAMKO	LAL [IFPA], OMN [IFPA], OCF [IFPA], MLB [IFPA], ORL [IFPA]	
CAMKO	ROSTR	LAL [IFPA], OMN [IFPA], OCF [IFPA], MLB [IFPA], ORL [IFPA]	
ROSTR	GUURR	LAL [IFPA], SRQ [IFPA], OMN [IFPA], OCF [IFPA], MLB [IFPA], ORL [IFPA]	
GUURR	DADES	LAL [IFPA], SRQ [IFPA], PIE [IFPA], OCF [IFPA], MLB [IFPA], ORL [IFPA]	
DADES	LZARD	LAL [IFPA], SRQ [IFPA], PIE [IFPA], ORL [IFPA]	
LZARD	LISAF	LAL [IFPA], SRQ [IFPA], PIE [IFPA], ORL [IFPA]	
LISAF	GUZDA	LAL [IFPA], SRQ [IFPA], PIE [IFPA]	
GUZDA	BORST	LAL [IFPA], SRQ [IFPA], PIE [IFPA]	
BORST	JSTRM	LAL [IFPA], SRQ [IFPA], PIE [IFPA]	

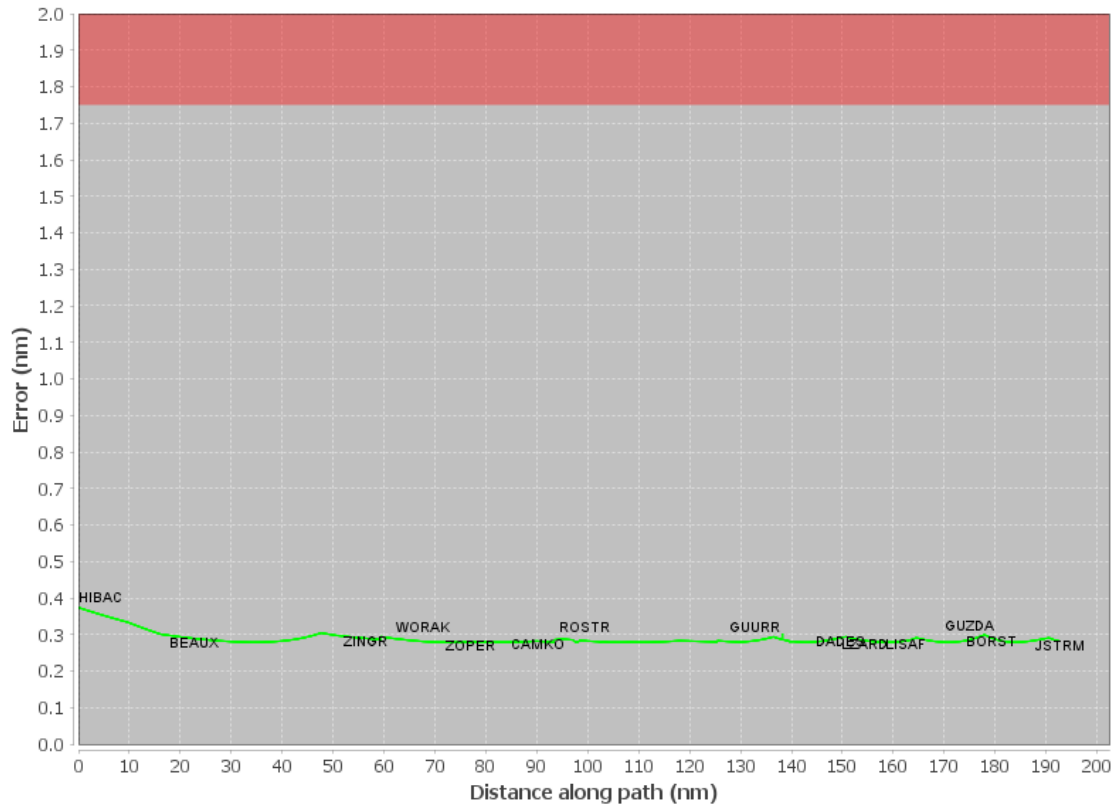
DME DME Assessment Results for DADES2 path HIBAC_JSTRM

User Data Files								
#	File Name							
None								
User DMEs								
#	Name	Lat/Lon	MAGVAR	Range	Elevation [ft]	Frequency	Replaces	Status
1	ORL FAA 694096-44 ORL [IFPA]	N28° 32' 33.80", W081° 20' 06.05"	0.0 E	130	101.6	112.2	ORL FAA 694096-44	
ESV:		Bearing [True]: 250.0° to 300.0° Bearing [Mag]: 250.0° to 300.0°				Arc Distance: Out to 78.0 NM Altitude: 4000.0 to 14700.0 ft		
2	CTY FAA 704013-38 CTY [IFPA]	N29° 35' 56.40", W083° 02' 55.65"	2.0 W	40	33.8	112.0	CTY FAA 704013-38	
ESV:		Bearing [True]: 55.0° to 90.0° Bearing [Mag]: 57.0° to 92.0°				Arc Distance: Out to 60.0 NM Altitude: 4000.0 to 14500.0 ft		
3	CRG FAA 698166-35 CRG [IFPA]	N30° 20' 19.97", W081° 30' 35.74"	3.0 W	130	41.9	114.5	CRG FAA 698166-35	
ESV:		Bearing [True]: 237.0° to 300.0° Bearing [Mag]: 240.0° to 303.0°				Arc Distance: Out to 61.0 NM Altitude: 2900.0 to 14600.0 ft		
4	CTY FAA 704013-60 CTY [IFPA]	N29° 35' 56.40", W083° 02' 55.65"	2.0 W	40	33.8	112.0	CTY FAA 704013-60	
ESV:		Bearing [True]: 97.0° to 114.0° Bearing [Mag]: 99.0° to 116.0°				Arc Distance: Out to 55.0 NM Altitude: 2900.0 to 18100.0 ft		
5	OCF FAA 714002-35 OCF [IFPA]	N29° 10' 38.92", W082° 13' 34.80"	0.0 E	40	78.3	113.7	OCF FAA 714002-35	
ESV:		Bearing [True]: 70.0° to 180.0° Bearing [Mag]: 70.0° to 180.0°				Arc Distance: Out to 80.0 NM Altitude: 5000.0 to 18000.0 ft		
6	GNV FAA 704230-51 GNV [IFPA]	N29° 41' 31.61", W082° 16' 22.70"	4.0 W	40	127.5	116.2	GNV FAA 704230-51	
ESV:		Bearing [True]: 114.0° to 122.0° Bearing [Mag]: 118.0° to 126.0°				Arc Distance: Out to 70.0 NM Altitude: 4900.0 to 18200.0 ft		
7	OMN FAA 694106-20 OMN [IFPA]	N29° 18' 11.70", W081° 06' 45.71"	0.0 E	130	24	112.6	OMN FAA 694106-20	
ESV:		Bearing [True]: 190.0° to 255.0° Bearing [Mag]: 190.0° to 255.0°				Arc Distance: Out to 72.0 NM Altitude: 3000.0 to 14600.0 ft		
8	OMN FAA 694106-62 OMN [IFPA]	N29° 18' 11.70", W081° 06' 45.71"	0.0 E	130	24	112.6	OMN FAA 694106-62	
ESV:		Bearing [True]: 94.0° to 120.0° Bearing [Mag]: 94.0° to 120.0°				Arc Distance: Out to 85.0 NM Altitude: 9900.0 to 14600.0 ft		
9	CTY FAA 704013-58 CTY [IFPA]	N29° 35' 56.40", W083° 02' 55.65"	2.0 W	40	33.8	112.0	CTY FAA 704013-58	
ESV:		Bearing [True]: 6.0° to 47.0° Bearing [Mag]: 8.0° to 49.0°				Arc Distance: Out to 67.0 NM Altitude: 4900.0 to 18100.0 ft		
10	ORL FAA 694096-78 ORL [IFPA]	N28° 32' 33.80", W081° 20' 06.05"	0.0 E	130	101.6	112.2	ORL FAA 694096-78	
ESV:		Bearing [True]: 63.0° to 78.0° Bearing [Mag]: 63.0° to 78.0°				Arc Distance: Out to 99.0 NM Altitude: 8500.0 to 14700.0 ft		
11	LAL FAA 704224-41 LAL [IFPA]	N27° 59' 10.31", W082° 00' 50.06"	1.0 E	130	133.8	116.0	LAL FAA 704224-41	
ESV:		Bearing [True]: 360.0° to 77.0° Bearing [Mag]: 359.0° to 76.0°				Arc Distance: Out to 70.0 NM Altitude: 3000.0 to 14700.0 ft		
12	OMN FAA 694106-23 OMN [IFPA]	N29° 18' 11.70", W081° 06' 45.71"	0.0 E	130	24	112.6	OMN FAA 694106-23	
ESV:		Bearing [True]: 113.0° to 187.0° Bearing [Mag]: 113.0° to 187.0°				Arc Distance: Out to 70.0 NM Altitude: 4000.0 to 18000.0 ft		
13	TRV FAA 704266-83 TRV [IFPA]	N27° 40' 42.26", W080° 29' 23.04"	7.0 W	130	18.9	117.3	TRV FAA 704266-83	
ESV:		Bearing [True]: 351.0° to 33.0° Bearing [Mag]: 358.0° to 40.0°				Arc Distance: Out to 101.0 NM Altitude: 8500.0 to 18100.0 ft		
14	GNV FAA 704230-32 GNV [IFPA]	N29° 41' 31.61", W082° 16' 22.70"	4.0 W	40	127.5	116.2	GNV FAA 704230-32	
ESV:		Bearing [True]: 325.0° to 20.0° Bearing [Mag]: 329.0° to 24.0°				Arc Distance: Out to 75.0 NM Altitude: 4000.0 to 14500.0 ft		
15	OMN FAA 694106-65 OMN [IFPA]	N29° 18' 11.70", W081° 06' 45.71"	0.0 E	130	24	112.6	OMN FAA 694106-65	
ESV:		Bearing [True]: 269.0° to 284.0° Bearing [Mag]: 269.0° to 284.0°				Arc Distance: Out to 61.0 NM Altitude: 2900.0 to 14600.0 ft		
16	AYS FAA 698108-10 AYS [IFPA]	N31° 16' 09.93", W082° 33' 23.20"	0.0 E	40	154.8	110.2	AYS FAA 698108-10	
ESV:		Bearing [True]: 148.0° to 215.0° Bearing [Mag]: 148.0° to 215.0°				Arc Distance: Out to 61.0 NM Altitude: 2900.0 to 18200.0 ft		

DME DME Assessment Results for DADES2 path HIBAC_JSTRM

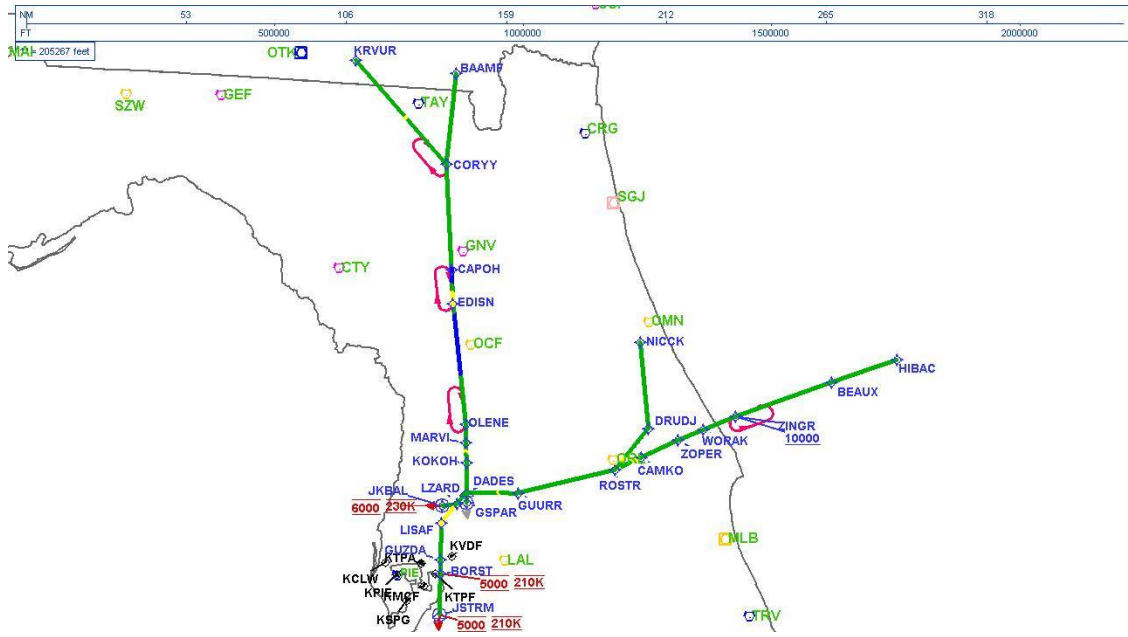
DME DME Assessment Results for DADES2 path HIBAC_JSTRM

DME Error



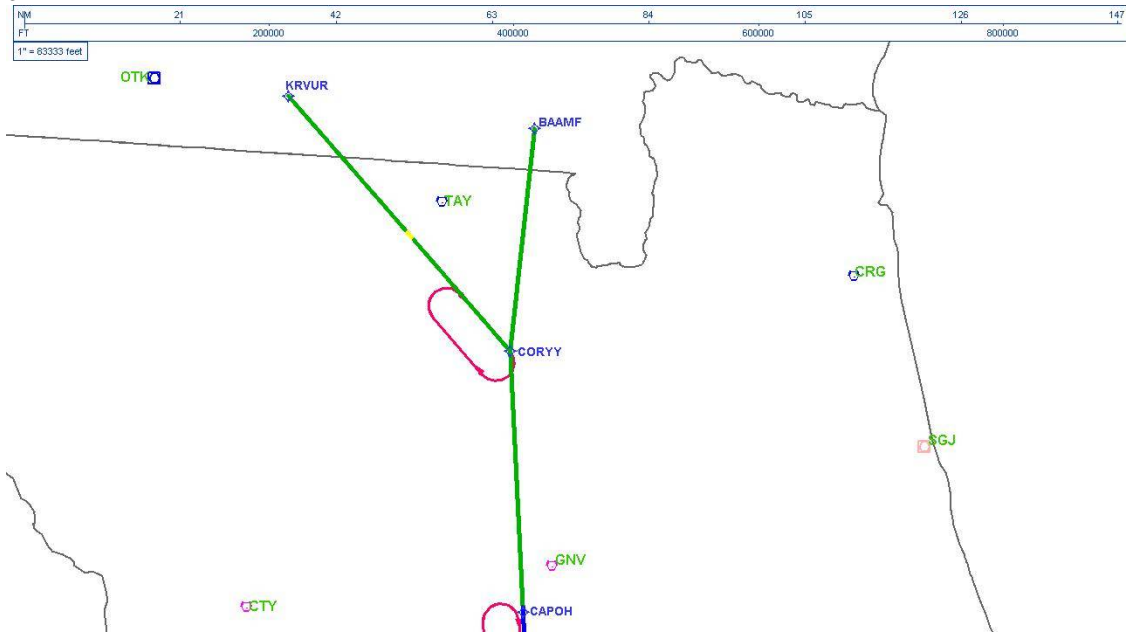
DME DME Assessment Results for DADES2 path HIBAC_JSTRM

Graphic Depiction 2



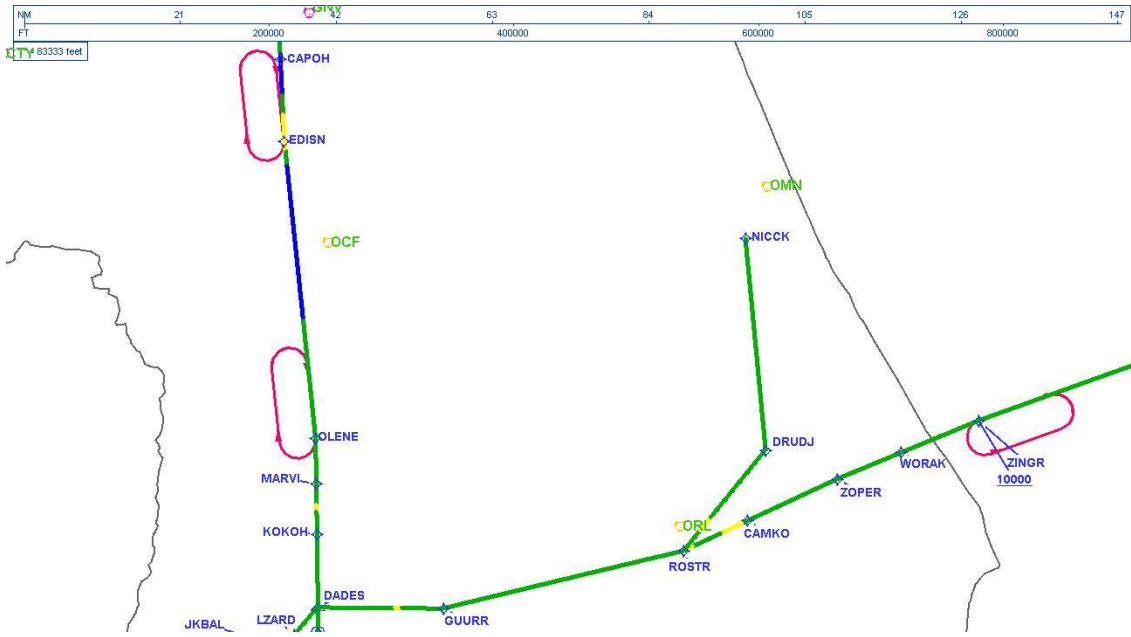
DME DME Assessment Results for DADES2 path HIBAC_JSTRM

Graphic Depiction 3



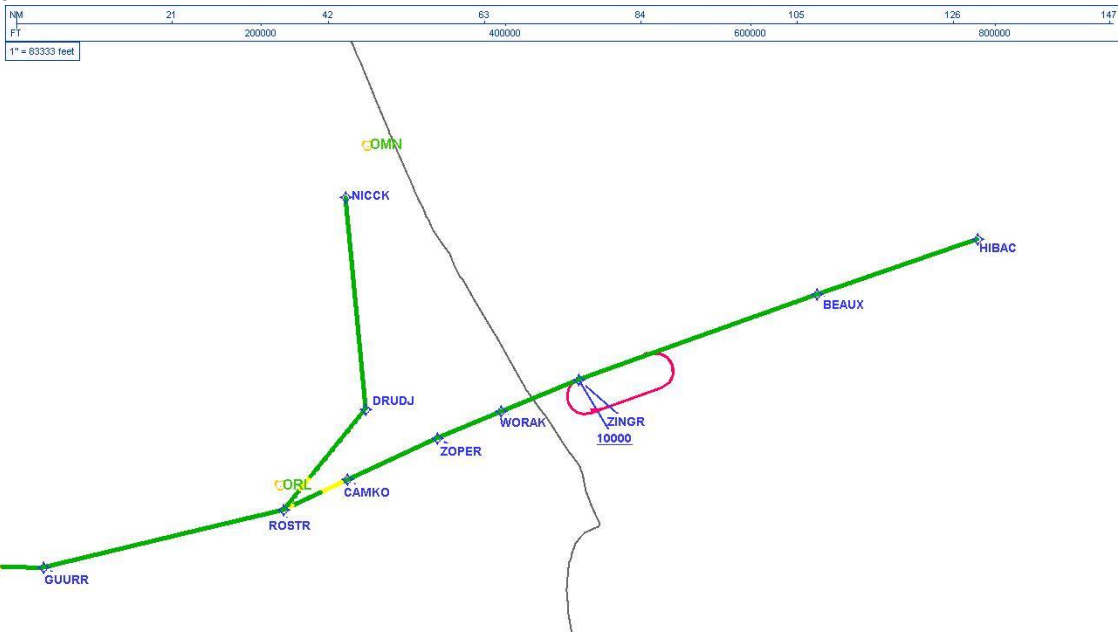
DME DME Assessment Results for DADES2 path HIBAC_JSTRM

Graphic Depiction 4



DME DME Assessment Results for DADES2 path HIBAC_JSTRM

Graphic Depiction 5



DME DME Assessment Results for DADES2 path HIBAC_JSTRM

Results Summary	
Flyability:	Completed
DME/DME:	Completed - No Critical DMEs
Name:	Mark CTR Thompson
Project File:	C:\Users\Mark CTR Thompson\OneDrive - Federal Aviation Administration\Desktop\RNAV Projects\RNAV Projects 2025\TPA.SRQ STARS_250417\KTPA DADES2 (RNAV) STAR\DME\KTPA DADES2 (RNAV) STAR DME_240904.tgs
Output File:	C:\Users\Mark CTR Thompson\OneDrive - Federal Aviation Administration\Desktop\RNAV Projects\RNAV Projects 2025\TPA.SRQ STARS_250417\KTPA DADES2 (RNAV) STAR\DME\KTPA [IFPA] DADES2 20240904_0741 EDT\HIBAC_JSTRM\KTPA DADES2 RNAV STAR HIBAC JSTRM 20240904_0741 EDT.pdf
Procedure Name:	DADES2
Software: DmeDmePlugin:	7.3.3
Date/Time:	09/04/2024 07:41 EDT
Databases:	MITRE 3DEP 3 arcsec

Failures
No Failures

Warnings
No Warnings

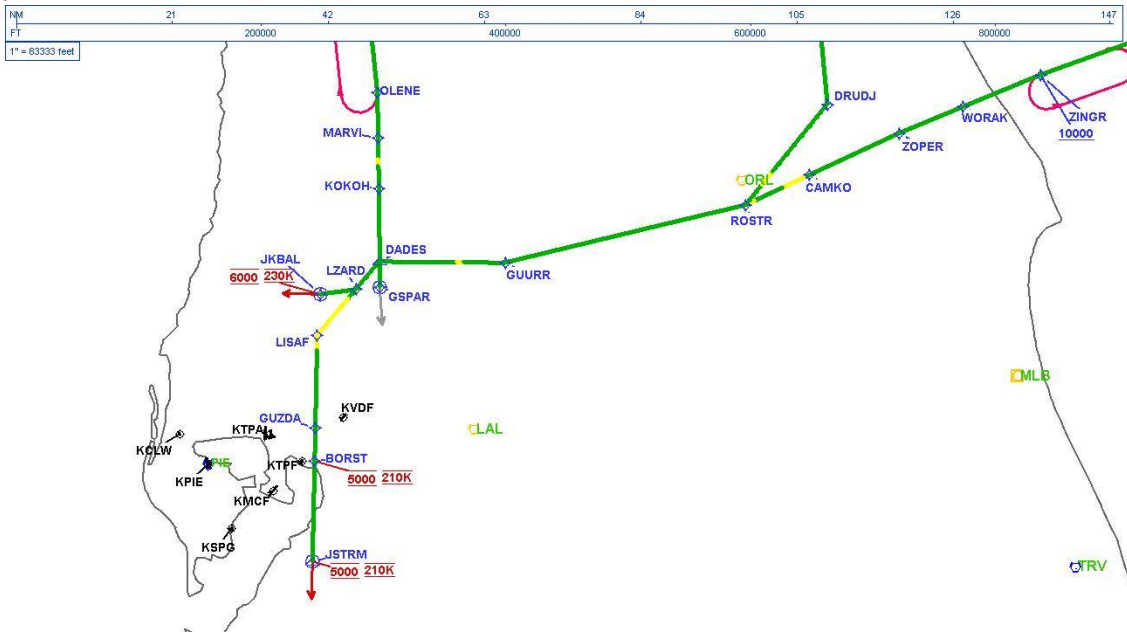
Informational
No Informational

Notes For Flight Check
None

Flight Plan							
Name	Type	Lat/Lon	Altitude (ft)	VNAV Mode	Ground Speed (kts)	Turn Type	Leg Type
HIBAC	WP	N29° 05' 38.63", W079° 34' 04.65"	10000	VNAV	200	FLY_BY	TF
BEAUX	WP	N28° 58' 12.71", W079° 58' 29.19"	10000	VNAV	200	FLY_BY	TF
ZINGR	WP	N28° 46' 48.22", W080° 34' 38.56"	10000	VNAV	200	FLY_BY	TF
WORAK	WP	N28° 42' 29.13", W080° 46' 31.16"	5000	VNAV	200	FLY_BY	TF
ZOPER	WP	N28° 38' 57.39", W080° 56' 10.65"	5000	VNAV	200	FLY_BY	TF
CAMKO	WP	N28° 33' 20.85", W081° 09' 48.09"	5000	VNAV	200	FLY_BY	TF
ROSTR	WP	N28° 29' 20.92", W081° 19' 27.98"	5000	VNAV	200	FLY_BY	TF
GUURR	WP	N28° 21' 36.42", W081° 56' 01.38"	5000	VNAV	200	FLY_BY	TF
DADES	WP	N28° 21' 45.62", W082° 15' 07.80"	5000	VNAV	200	FLY_BY	TF
LZARD	WP	N28° 18' 00.55", W082° 18' 42.63"	5000	VNAV	210	FLY_BY	TF
LISAF	WP	N28° 11' 48.36", W082° 24' 37.17"	4000	VNAV	210	FLY_BY	TF
GUZDA	WP	N27° 59' 26.58", W082° 24' 55.15"	4000	VNAV	210	FLY_BY	TF
BORST	WP	N27° 55' 01.42", W082° 25' 00.77"	4000	VNAV	210	FLY_BY	TF
JSTRM	WP	N27° 41' 30.57", W082° 25' 21.07"	4000	VNAV	210	FLY_OVER	TF

DME DME Assessment Results for DADES2 path HIBAC_JSTRM

Graphic Depiction 6



DME DME Assessment Results for DADES2 path KRVUR_CORYY

Results Summary	
Flyability:	Completed
DME/DME:	Completed - No Critical DMEs
Name:	Mark CTR Thompson
Project File:	C:\Users\Mark CTR Thompson\OneDrive - Federal Aviation Administration\Desktop\RNAV Projects\RNAV Projects 2025\TPA.SRQ STARS_250417\KTPA DADES2 (RNAV) STAR\DME\KTPA DADES2 (RNAV) STAR DME_240904.tgs
Output File:	C:\Users\Mark CTR Thompson\OneDrive - Federal Aviation Administration\Desktop\RNAV Projects\RNAV Projects 2025\TPA.SRQ STARS_250417\KTPA DADES2 (RNAV) STAR\DME\KTPA [IFPA] DADES2 20240904_0741 EDT\KRVUR_CORYY\KTPA DADES2 RNAV STAR KRVUR CORYY 20240904_0741 EDT.pdf
Procedure Name:	DADES2
Software: DmeDmePlugin:	7.3.3
Date/Time:	09/04/2024 07:41 EDT
Databases:	MITRE 3DEP 3 arcsec

Failures
No Failures

Warnings
No Warnings

Informational
No Informational

Notes For Flight Check
None

Flight Plan							
Name	Type	Lat/Lon	Altitude (ft)	VNAV Mode	Ground Speed (kts)	Turn Type	Leg Type
KRVUR	WP	N30° 44' 32.15", W082° 56' 30.39"	5000	VNAV	200	FLY_BY	TF
CORYY	WP	N30° 10' 15.89", W082° 22' 46.33"	5000	VNAV	200	FLY_BY	TF

Flyability	
Flight Type:	RNAV_STAR
Selected Airport:	KTPA [IFPA]
Climb Gradient:	None assigned
Speeds:	200 Ground Speed to 11000 FT
	240 Ground Speed to 18000 FT
	260 Ground Speed to 24000 FT
	340 Ground Speed above 24000 FT
Descent During a Turn:	Allowed
VNAV Mode:	Flight Plan

DME DME Assessment Results for DADES2 path KRVUR_CORYY

DME/DME	
RNP:	RNP 2
Flight Mode:	Manual
Line of Sight (DTED Level 0 Max):	Evaluated
Inertial Drift:	Enabled
Initial Drift:	0.558 NM
INS Drift Rate:	8.0 NM/Hour
Range Mode:	OSV
RNP Edges:	Evaluated
Min DME Range:	3.0 NM
DME Types:	DME, VOR-DME, VORTAC
DME Include Angles:	30 to 150
Critical DMEs:	Allowed
DoD Facilities:	Not included
Foreign Facilities:	Included
High DMEs:	Included
Low DMEs:	Included
Terminal DMEs:	Included
Flight Check DMEs:	Not selected
Higher Altitudes:	Not Evaluated
Near Maximum Altitude:	Not Evaluated
Automatic ESVs:	Not enabled
Disabled DMEs:	None

DME/DME (Continued)										
DMEs Used										
#	Name	Lat/Lon	MAGVAR	Range	Type	Source	Critical	Status	Time	Distance
1	TAY	N30° 30' 16.70", W082° 33' 10.45"	3.0 W	130	H	IFPA	NO	Enabled		
2	CRG	N30° 20' 19.97", W081° 30' 35.74"	3.0 W	130	H	IFPA	NO	Enabled		
3	OTK	N30° 46' 49.60", W083° 16' 47.02"	2.0 W	130	H	IFPA	NO	Enabled		
4	GNV	N29° 41' 31.61", W082° 16' 22.70"	4.0 W	40	L	IFPA	NO	Enabled		
5	CTY	N29° 35' 56.40", W083° 02' 55.65"	2.0 W	40	L	IFPA	NO	Enabled		
6	AYS	N31° 16' 09.93", W082° 33' 23.20"	0.0 E	40	L	IFPA	NO	Enabled		

Flight Check DME Selection						
Distance [NM]	Selected DMEs					Alternate
0.0	AYS [IFPA]	TAY [IFPA]	OTK [IFPA]	GNV [IFPA]		
7.3	AYS [IFPA]	OTK [IFPA]	TAY [IFPA]	CTY [IFPA]	GNV [IFPA]	
21.7	CTY [IFPA]	OTK [IFPA]	AYS [IFPA]	GNV [IFPA]		
23.7	CRG [IFPA]	AYS [IFPA]	CTY [IFPA]	OTK [IFPA]	GNV [IFPA]	TAY [IFPA]
25.1	CRG [IFPA]	AYS [IFPA]	CTY [IFPA]	GNV [IFPA]		
26.0	CRG [IFPA]	AYS [IFPA]	CTY [IFPA]	TAY [IFPA]	GNV [IFPA]	
35.2	CRG [IFPA]	TAY [IFPA]	GNV [IFPA]	CTY [IFPA]		

Inertial Drift Segments			
#	Start Location	End Location	Length [NM]

DME DME Assessment Results for DADES2 path KRVUR_CORYY

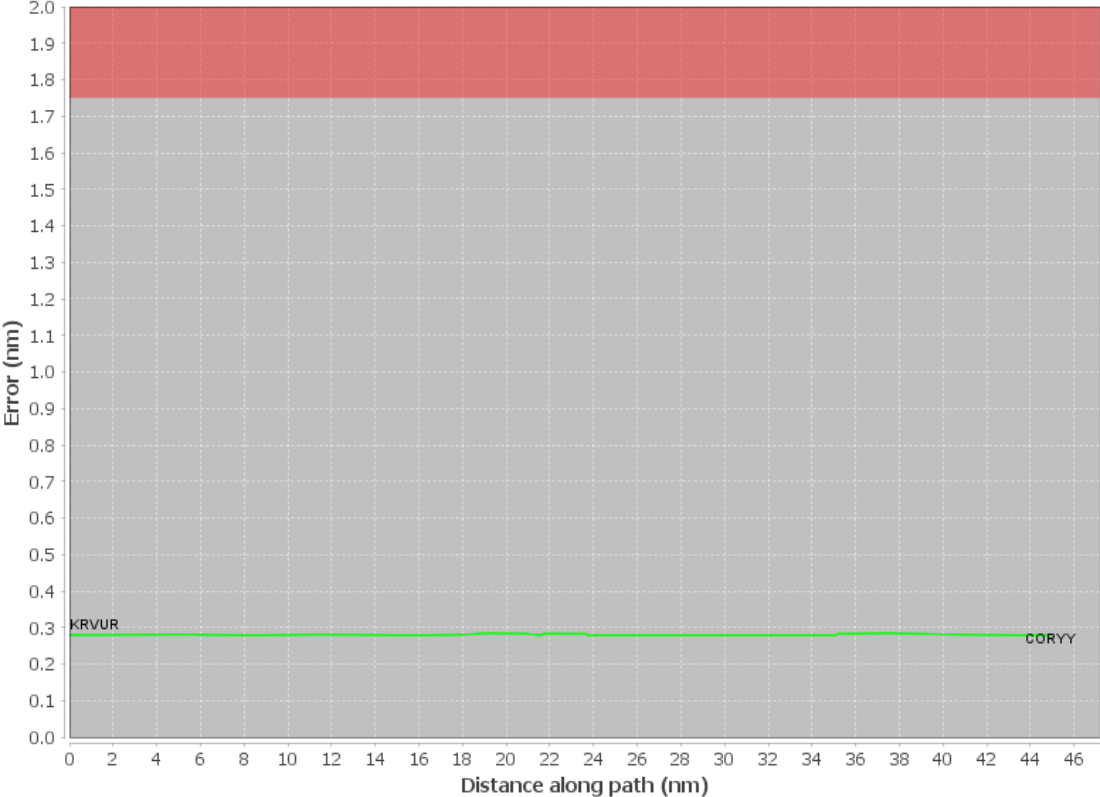
Available DMEs by Waypoints			
Waypoint Before	Waypoint After	DME List	Suggested DMEs
KRVUR	CORYY	TAY [IFPA], CRG [IFPA], OTK [IFPA], GNV [IFPA], CTY [IFPA], AYS [IFPA]	

DME DME Assessment Results for DADES2 path KRVUR_CORYY

User Data Files								
#	File Name							
None								
User DMEs								
#	Name	Lat/Lon	MAGVAR	Range	Elevation [ft]	Frequency	Replaces	Status
1	ORL FAA 694096-44 ORL [IFPA]	N28° 32' 33.80", W081° 20' 06.05"	0.0 E	130	101.6	112.2	ORL FAA 694096-44	
ESV:		Bearing [True]: 250.0° to 300.0° Bearing [Mag]: 250.0° to 300.0°				Arc Distance: Out to 78.0 NM Altitude: 4000.0 to 14700.0 ft		
2	CTY FAA 704013-38 CTY [IFPA]	N29° 35' 56.40", W083° 02' 55.65"	2.0 W	40	33.8	112.0	CTY FAA 704013-38	
ESV:		Bearing [True]: 55.0° to 90.0° Bearing [Mag]: 57.0° to 92.0°				Arc Distance: Out to 60.0 NM Altitude: 4000.0 to 14500.0 ft		
3	CRG FAA 698166-35 CRG [IFPA]	N30° 20' 19.97", W081° 30' 35.74"	3.0 W	130	41.9	114.5	CRG FAA 698166-35	
ESV:		Bearing [True]: 237.0° to 300.0° Bearing [Mag]: 240.0° to 303.0°				Arc Distance: Out to 61.0 NM Altitude: 2900.0 to 14600.0 ft		
4	CTY FAA 704013-60 CTY [IFPA]	N29° 35' 56.40", W083° 02' 55.65"	2.0 W	40	33.8	112.0	CTY FAA 704013-60	
ESV:		Bearing [True]: 97.0° to 114.0° Bearing [Mag]: 99.0° to 116.0°				Arc Distance: Out to 55.0 NM Altitude: 2900.0 to 18100.0 ft		
5	OCF FAA 714002-35 OCF [IFPA]	N29° 10' 38.92", W082° 13' 34.80"	0.0 E	40	78.3	113.7	OCF FAA 714002-35	
ESV:		Bearing [True]: 70.0° to 180.0° Bearing [Mag]: 70.0° to 180.0°				Arc Distance: Out to 80.0 NM Altitude: 5000.0 to 18000.0 ft		
6	GNV FAA 704230-51 GNV [IFPA]	N29° 41' 31.61", W082° 16' 22.70"	4.0 W	40	127.5	116.2	GNV FAA 704230-51	
ESV:		Bearing [True]: 114.0° to 122.0° Bearing [Mag]: 118.0° to 126.0°				Arc Distance: Out to 70.0 NM Altitude: 4900.0 to 18200.0 ft		
7	OMN FAA 694106-20 OMN [IFPA]	N29° 18' 11.70", W081° 06' 45.71"	0.0 E	130	24	112.6	OMN FAA 694106-20	
ESV:		Bearing [True]: 190.0° to 255.0° Bearing [Mag]: 190.0° to 255.0°				Arc Distance: Out to 72.0 NM Altitude: 3000.0 to 14600.0 ft		
8	OMN FAA 694106-62 OMN [IFPA]	N29° 18' 11.70", W081° 06' 45.71"	0.0 E	130	24	112.6	OMN FAA 694106-62	
ESV:		Bearing [True]: 94.0° to 120.0° Bearing [Mag]: 94.0° to 120.0°				Arc Distance: Out to 85.0 NM Altitude: 9900.0 to 14600.0 ft		
9	CTY FAA 704013-58 CTY [IFPA]	N29° 35' 56.40", W083° 02' 55.65"	2.0 W	40	33.8	112.0	CTY FAA 704013-58	
ESV:		Bearing [True]: 6.0° to 47.0° Bearing [Mag]: 8.0° to 49.0°				Arc Distance: Out to 67.0 NM Altitude: 4900.0 to 18100.0 ft		
10	ORL FAA 694096-78 ORL [IFPA]	N28° 32' 33.80", W081° 20' 06.05"	0.0 E	130	101.6	112.2	ORL FAA 694096-78	
ESV:		Bearing [True]: 63.0° to 78.0° Bearing [Mag]: 63.0° to 78.0°				Arc Distance: Out to 99.0 NM Altitude: 8500.0 to 14700.0 ft		
11	LAL FAA 704224-41 LAL [IFPA]	N27° 59' 10.31", W082° 00' 50.06"	1.0 E	130	133.8	116.0	LAL FAA 704224-41	
ESV:		Bearing [True]: 360.0° to 77.0° Bearing [Mag]: 359.0° to 76.0°				Arc Distance: Out to 70.0 NM Altitude: 3000.0 to 14700.0 ft		
12	OMN FAA 694106-23 OMN [IFPA]	N29° 18' 11.70", W081° 06' 45.71"	0.0 E	130	24	112.6	OMN FAA 694106-23	
ESV:		Bearing [True]: 113.0° to 187.0° Bearing [Mag]: 113.0° to 187.0°				Arc Distance: Out to 70.0 NM Altitude: 4000.0 to 18000.0 ft		
13	TRV FAA 704266-83 TRV [IFPA]	N27° 40' 42.26", W080° 29' 23.04"	7.0 W	130	18.9	117.3	TRV FAA 704266-83	
ESV:		Bearing [True]: 351.0° to 33.0° Bearing [Mag]: 358.0° to 40.0°				Arc Distance: Out to 101.0 NM Altitude: 8500.0 to 18100.0 ft		
14	GNV FAA 704230-32 GNV [IFPA]	N29° 41' 31.61", W082° 16' 22.70"	4.0 W	40	127.5	116.2	GNV FAA 704230-32	
ESV:		Bearing [True]: 325.0° to 20.0° Bearing [Mag]: 329.0° to 24.0°				Arc Distance: Out to 75.0 NM Altitude: 4000.0 to 14500.0 ft		
15	OMN FAA 694106-65 OMN [IFPA]	N29° 18' 11.70", W081° 06' 45.71"	0.0 E	130	24	112.6	OMN FAA 694106-65	
ESV:		Bearing [True]: 269.0° to 284.0° Bearing [Mag]: 269.0° to 284.0°				Arc Distance: Out to 61.0 NM Altitude: 2900.0 to 14600.0 ft		
16	AYS FAA 698108-10 AYS [IFPA]	N31° 16' 09.93", W082° 33' 23.20"	0.0 E	40	154.8	110.2	AYS FAA 698108-10	
ESV:		Bearing [True]: 148.0° to 215.0° Bearing [Mag]: 148.0° to 215.0°				Arc Distance: Out to 61.0 NM Altitude: 2900.0 to 18200.0 ft		

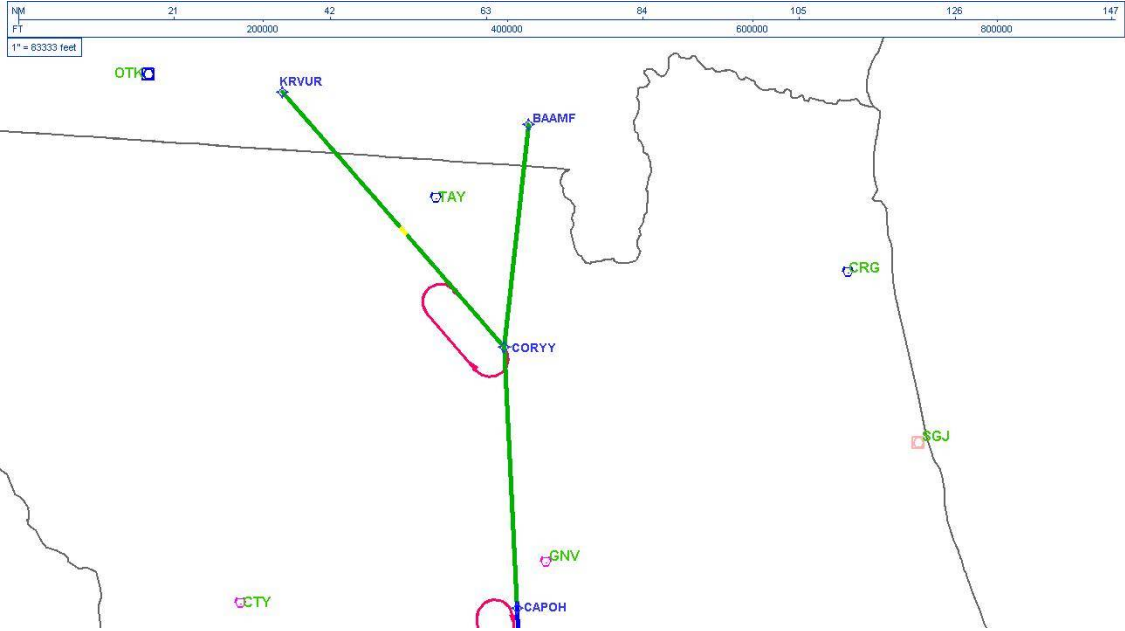
DME DME Assessment Results for DADES2 path KRVUR_CORYY

DME Error



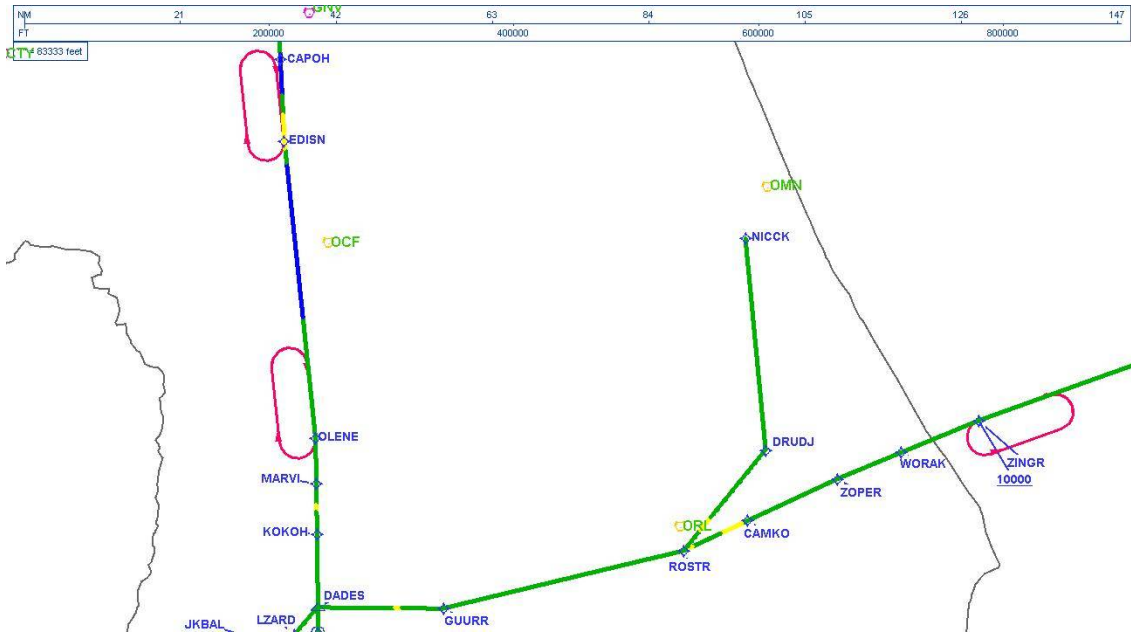
DME DME Assessment Results for DADES2 path KRVUR_CORYY

Graphic Depiction 3



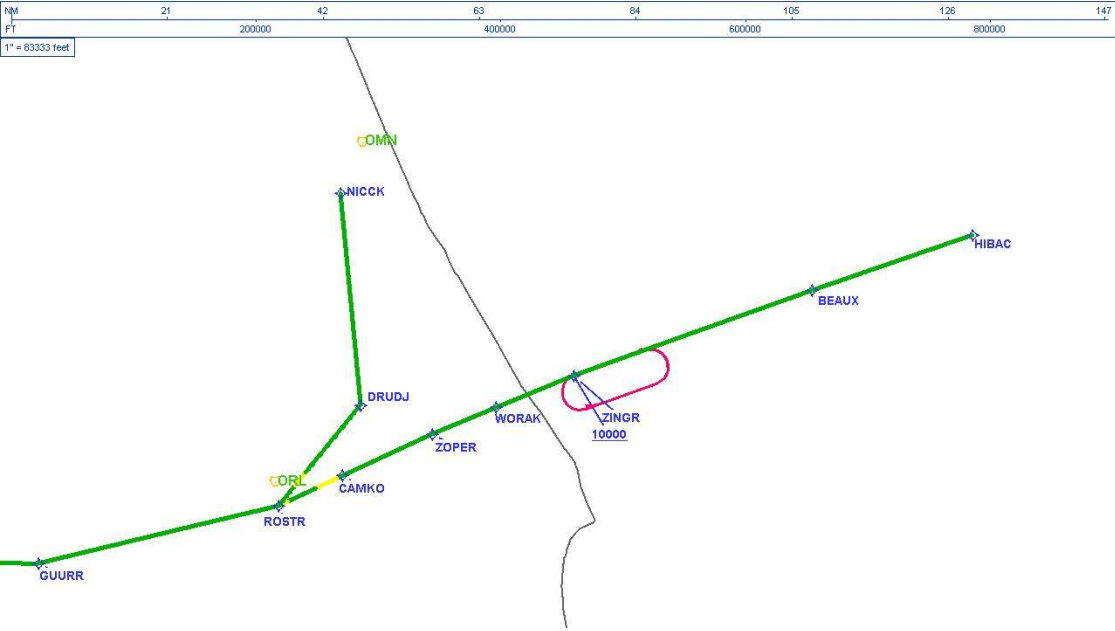
DME DME Assessment Results for DADES2 path KRVUR_CORYY

Graphic Depiction 4



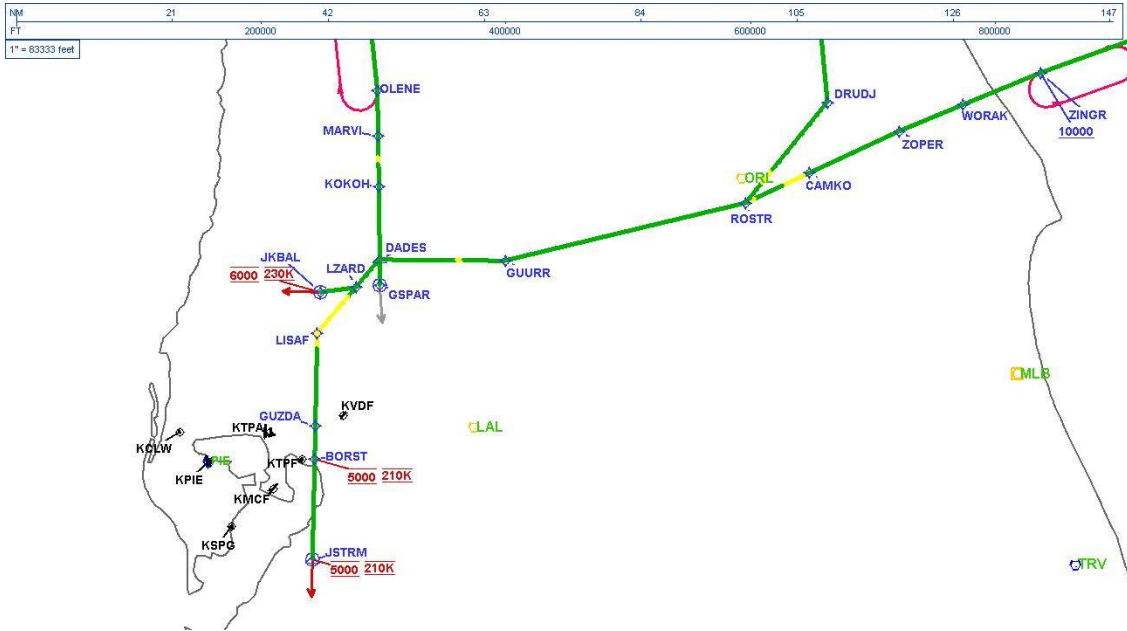
DME DME Assessment Results for DADES2 path KRVUR_CORYY

Graphic Depiction 5



DME DME Assessment Results for DADES2 path KRVUR_CORYY

Graphic Depiction 6



DME DME Assessment Results for DADES2 path LZARD_JKBAL

Results Summary

Flyability:	Completed
DME/DME:	Completed - No Critical DMEs
Name:	Mark CTR Thompson
Project File:	C:\Users\Mark CTR Thompson\OneDrive - Federal Aviation Administration\Desktop\RNAV Projects\RNAV Projects 2025\TPA.SRQ STARS_250417\KTPA DADES2 (RNAV) STAR\DME\KTPA DADES2 (RNAV) STAR DME_240904.tgs
Output File:	C:\Users\Mark CTR Thompson\OneDrive - Federal Aviation Administration\Desktop\RNAV Projects\RNAV Projects 2025\TPA.SRQ STARS_250417\KTPA DADES2 (RNAV) STAR\DME\KTPA [IFPA] DADES2 20240904_0741 EDT\LZARD_JKBAL\KTPA DADES2 RNAV STAR LZARD JKBAL 20240904_0741 EDT.pdf
Procedure Name:	DADES2
Software: DmeDmePlugin:	7.3.3
Date/Time:	09/04/2024 07:41 EDT
Databases:	MITRE 3DEP 3 arcsec

Failures

No Failures

Warnings

No Warnings

Informational

No Informational

Notes For Flight Check

None

Flight Plan

Name	Type	Lat/Lon	Altitude (ft)	VNAV Mode	Ground Speed (kts)	Turn Type	Leg Type
LZARD	WP	N28° 18' 00.55", W082° 18' 42.63"	5000	VNAV	210	FLY_BY	TF
JKBAL	WP	N28° 17' 22.88", W082° 24' 07.97"	5000	VNAV	230	FLY_OVER	TF

Flyability

Flight Type:	RNAV_STAR
Selected Airport:	KTPA [IFPA]
Climb Gradient:	None assigned
Speeds:	200 Ground Speed to 11000 FT
	240 Ground Speed to 18000 FT
	260 Ground Speed to 24000 FT
	340 Ground Speed above 24000 FT
Descent During a Turn:	Allowed
VNAV Mode:	Flight Plan

DME DME Assessment Results for DADES2 path LZARD_JKBAL

DME/DME	
RNP:	RNP 2
Flight Mode:	Manual
Line of Sight (DTED Level 0 Max):	Evaluated
Inertial Drift:	Enabled
Initial Drift:	0.558 NM
INS Drift Rate:	8.0 NM/Hour
Range Mode:	OSV
RNP Edges:	Evaluated
Min DME Range:	3.0 NM
DME Types:	DME, VOR-DME, VORTAC
DME Include Angles:	30 to 150
Critical DMEs:	Allowed
DoD Facilities:	Not included
Foreign Facilities:	Included
High DMEs:	Included
Low DMEs:	Included
Terminal DMEs:	Included
Flight Check DMEs:	Not selected
Higher Altitudes:	Not Evaluated
Near Maximum Altitude:	Not Evaluated
Automatic ESVs:	Not enabled
Disabled DMEs:	None

DME/DME (Continued)										
DMEs Used										
#	Name	Lat/Lon	MAGVAR	Range	Type	Source	Critical	Status	Time	Distance
1	LAL	N27° 59' 10.31", W082° 00' 50.06"	1.0 E	130	H	IFPA	NO	Enabled		
2	SRQ	N27° 24' 25.26", W082° 33' 49.18"	5.0 W	130	DH	IFPA	NO	Enabled		
3	PIE	N27° 54' 27.95", W082° 41' 03.51"	5.0 W	130	H	IFPA	NO	Enabled		
4	ORL	N28° 32' 33.80", W081° 20' 06.05"	0.0 E	130	H	IFPA	NO	Enabled		

Flight Check DME Selection						
Distance [NM]	Selected DMEs					Alternate
0.0	LAL [IFPA]	PIE [IFPA]	ORL [IFPA]	SRQ [IFPA]		

Inertial Drift Segments			
#	Start Location	End Location	Length [NM]

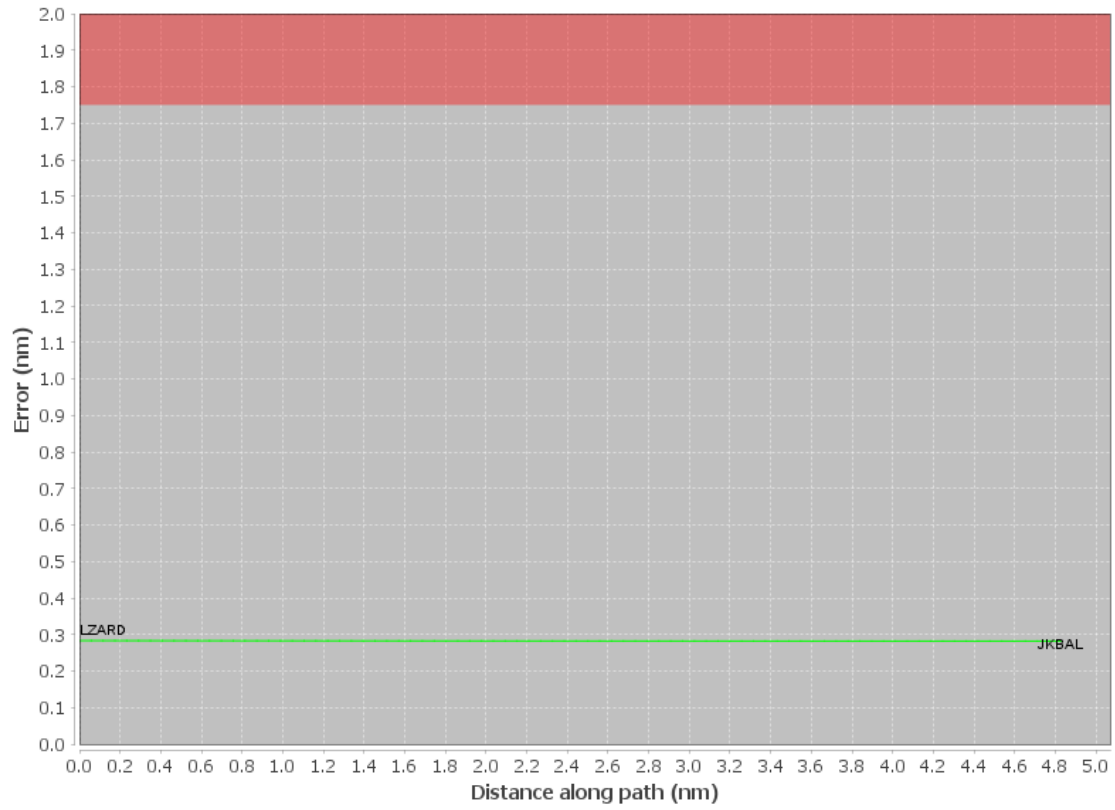
Available DMEs by Waypoints			
Waypoint Before	Waypoint After	DME List	Suggested DMEs
LZARD	JKBAL	LAL [IFPA], SRQ [IFPA], PIE [IFPA], ORL [IFPA]	

DME DME Assessment Results for DADES2 path LZARD_JKBAL

User Data Files								
#	File Name							
None								
User DMEs								
#	Name	Lat/Lon	MAGVAR	Range	Elevation [ft]	Frequency	Replaces	Status
1	ORL FAA 694096-44 ORL [IFPA]	N28° 32' 33.80", W081° 20' 06.05"	0.0 E	130	101.6	112.2	ORL FAA 694096-44	
ESV:		Bearing [True]: 250.0° to 300.0° Bearing [Mag]: 250.0° to 300.0°				Arc Distance: Out to 78.0 NM Altitude: 4000.0 to 14700.0 ft		
2	CTY FAA 704013-38 CTY [IFPA]	N29° 35' 56.40", W083° 02' 55.65"	2.0 W	40	33.8	112.0	CTY FAA 704013-38	
ESV:		Bearing [True]: 55.0° to 90.0° Bearing [Mag]: 57.0° to 92.0°				Arc Distance: Out to 60.0 NM Altitude: 4000.0 to 14500.0 ft		
3	CRG FAA 698166-35 CRG [IFPA]	N30° 20' 19.97", W081° 30' 35.74"	3.0 W	130	41.9	114.5	CRG FAA 698166-35	
ESV:		Bearing [True]: 237.0° to 300.0° Bearing [Mag]: 240.0° to 303.0°				Arc Distance: Out to 61.0 NM Altitude: 2900.0 to 14600.0 ft		
4	CTY FAA 704013-60 CTY [IFPA]	N29° 35' 56.40", W083° 02' 55.65"	2.0 W	40	33.8	112.0	CTY FAA 704013-60	
ESV:		Bearing [True]: 97.0° to 114.0° Bearing [Mag]: 99.0° to 116.0°				Arc Distance: Out to 55.0 NM Altitude: 2900.0 to 18100.0 ft		
5	OCF FAA 714002-35 OCF [IFPA]	N29° 10' 38.92", W082° 13' 34.80"	0.0 E	40	78.3	113.7	OCF FAA 714002-35	
ESV:		Bearing [True]: 70.0° to 180.0° Bearing [Mag]: 70.0° to 180.0°				Arc Distance: Out to 80.0 NM Altitude: 5000.0 to 18000.0 ft		
6	GNV FAA 704230-51 GNV [IFPA]	N29° 41' 31.61", W082° 16' 22.70"	4.0 W	40	127.5	116.2	GNV FAA 704230-51	
ESV:		Bearing [True]: 114.0° to 122.0° Bearing [Mag]: 118.0° to 126.0°				Arc Distance: Out to 70.0 NM Altitude: 4900.0 to 18200.0 ft		
7	OMN FAA 694106-20 OMN [IFPA]	N29° 18' 11.70", W081° 06' 45.71"	0.0 E	130	24	112.6	OMN FAA 694106-20	
ESV:		Bearing [True]: 190.0° to 255.0° Bearing [Mag]: 190.0° to 255.0°				Arc Distance: Out to 72.0 NM Altitude: 3000.0 to 14600.0 ft		
8	OMN FAA 694106-62 OMN [IFPA]	N29° 18' 11.70", W081° 06' 45.71"	0.0 E	130	24	112.6	OMN FAA 694106-62	
ESV:		Bearing [True]: 94.0° to 120.0° Bearing [Mag]: 94.0° to 120.0°				Arc Distance: Out to 85.0 NM Altitude: 9900.0 to 14600.0 ft		
9	CTY FAA 704013-58 CTY [IFPA]	N29° 35' 56.40", W083° 02' 55.65"	2.0 W	40	33.8	112.0	CTY FAA 704013-58	
ESV:		Bearing [True]: 6.0° to 47.0° Bearing [Mag]: 8.0° to 49.0°				Arc Distance: Out to 67.0 NM Altitude: 4900.0 to 18100.0 ft		
10	ORL FAA 694096-78 ORL [IFPA]	N28° 32' 33.80", W081° 20' 06.05"	0.0 E	130	101.6	112.2	ORL FAA 694096-78	
ESV:		Bearing [True]: 63.0° to 78.0° Bearing [Mag]: 63.0° to 78.0°				Arc Distance: Out to 99.0 NM Altitude: 8500.0 to 14700.0 ft		
11	LAL FAA 704224-41 LAL [IFPA]	N27° 59' 10.31", W082° 00' 50.06"	1.0 E	130	133.8	116.0	LAL FAA 704224-41	
ESV:		Bearing [True]: 360.0° to 77.0° Bearing [Mag]: 359.0° to 76.0°				Arc Distance: Out to 70.0 NM Altitude: 3000.0 to 14700.0 ft		
12	OMN FAA 694106-23 OMN [IFPA]	N29° 18' 11.70", W081° 06' 45.71"	0.0 E	130	24	112.6	OMN FAA 694106-23	
ESV:		Bearing [True]: 113.0° to 187.0° Bearing [Mag]: 113.0° to 187.0°				Arc Distance: Out to 70.0 NM Altitude: 4000.0 to 18000.0 ft		
13	TRV FAA 704266-83 TRV [IFPA]	N27° 40' 42.26", W080° 29' 23.04"	7.0 W	130	18.9	117.3	TRV FAA 704266-83	
ESV:		Bearing [True]: 351.0° to 33.0° Bearing [Mag]: 358.0° to 40.0°				Arc Distance: Out to 101.0 NM Altitude: 8500.0 to 18100.0 ft		
14	GNV FAA 704230-32 GNV [IFPA]	N29° 41' 31.61", W082° 16' 22.70"	4.0 W	40	127.5	116.2	GNV FAA 704230-32	
ESV:		Bearing [True]: 325.0° to 20.0° Bearing [Mag]: 329.0° to 24.0°				Arc Distance: Out to 75.0 NM Altitude: 4000.0 to 14500.0 ft		
15	OMN FAA 694106-65 OMN [IFPA]	N29° 18' 11.70", W081° 06' 45.71"	0.0 E	130	24	112.6	OMN FAA 694106-65	
ESV:		Bearing [True]: 269.0° to 284.0° Bearing [Mag]: 269.0° to 284.0°				Arc Distance: Out to 61.0 NM Altitude: 2900.0 to 14600.0 ft		
16	AYS FAA 698108-10 AYS [IFPA]	N31° 16' 09.93", W082° 33' 23.20"	0.0 E	40	154.8	110.2	AYS FAA 698108-10	
ESV:		Bearing [True]: 148.0° to 215.0° Bearing [Mag]: 148.0° to 215.0°				Arc Distance: Out to 61.0 NM Altitude: 2900.0 to 18200.0 ft		

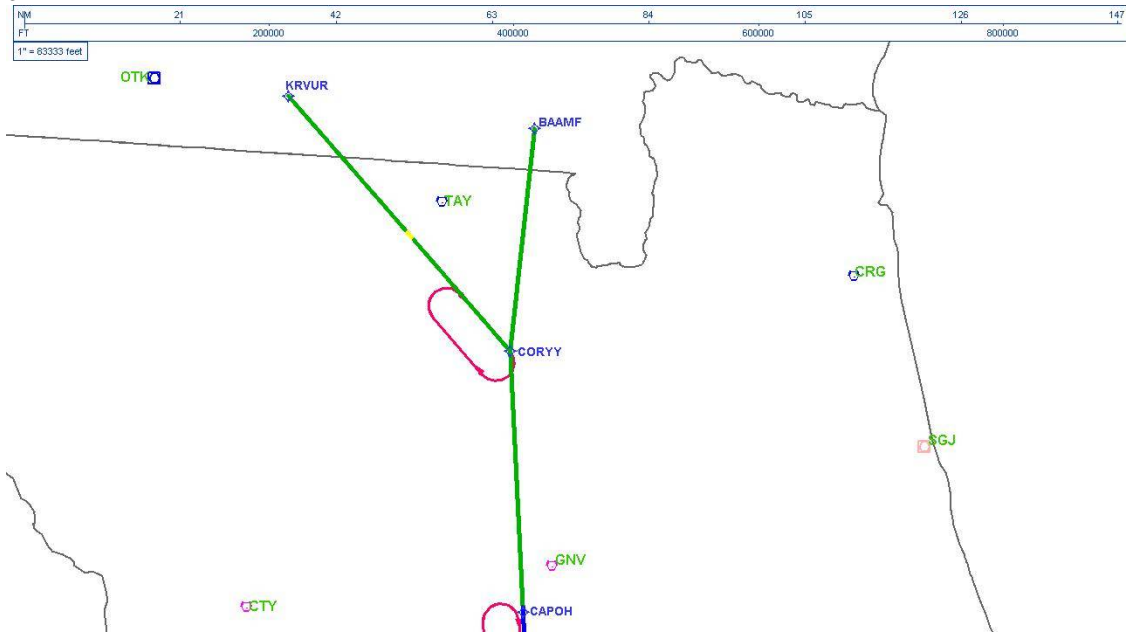
DME DME Assessment Results for DADES2 path LZARD_JKBAL

DME Error



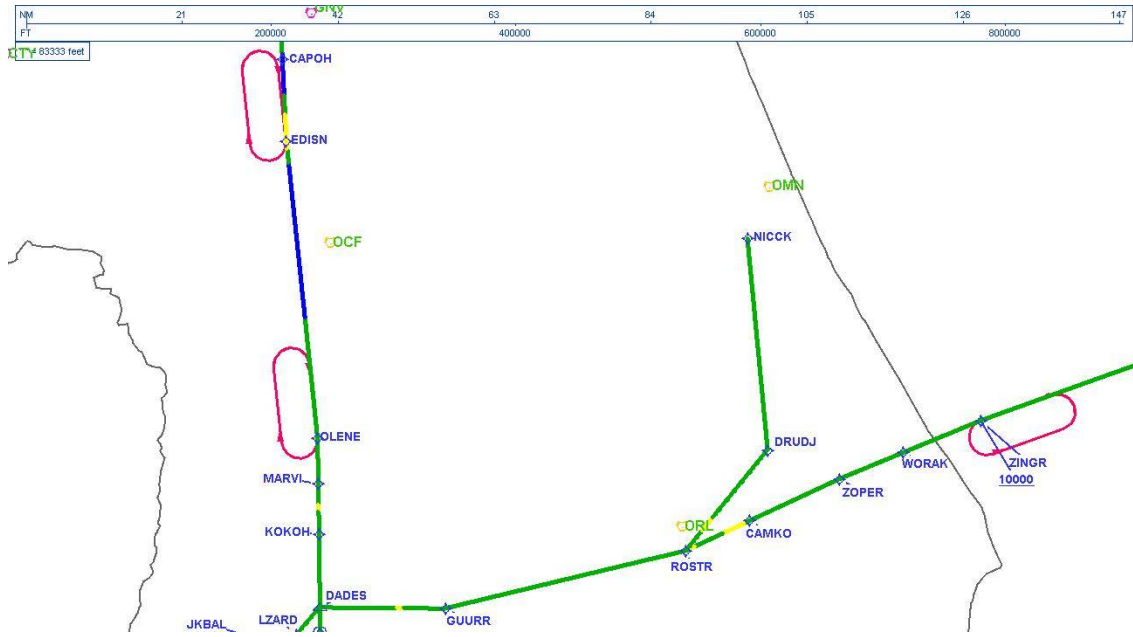
DME DME Assessment Results for DADES2 path LZARD_JKBAL

Graphic Depiction 3



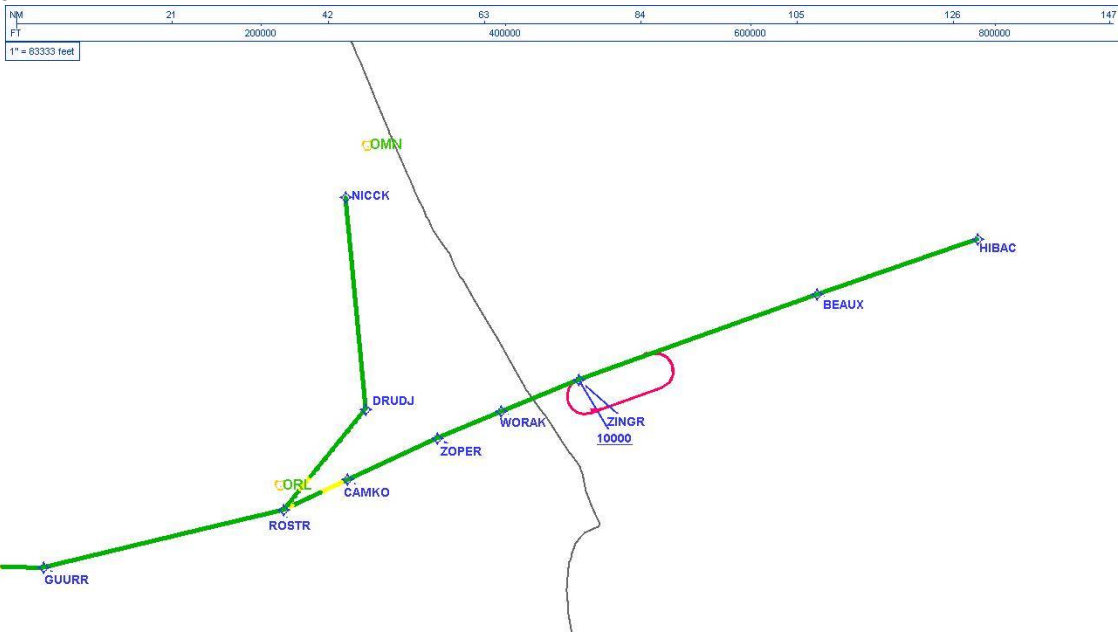
DME DME Assessment Results for DADES2 path LZARD_JKBAL

Graphic Depiction 4



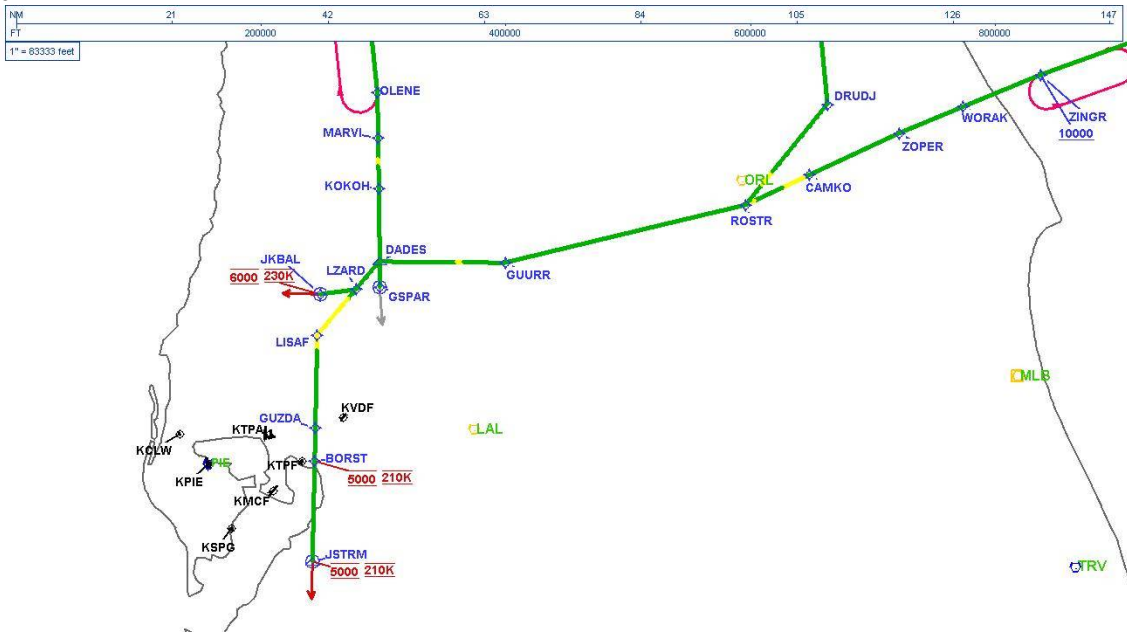
DME DME Assessment Results for DADES2 path LZARD_JKBAL

Graphic Depiction 5



DME DME Assessment Results for DADES2 path LZARD_JKBAL

Graphic Depiction 6



DME DME Assessment Results for DADES2 path NICCK_ROSTR

Results Summary

Flyability:	Completed
DME/DME:	Completed - No Critical DMEs
Name:	Mark CTR Thompson
Project File:	C:\Users\Mark CTR Thompson\OneDrive - Federal Aviation Administration\Desktop\RNAV Projects\RNAV Projects 2025\TPA.SRQ STARS_250417\KTPA DADES2 (RNAV) STAR\DME\KTPA DADES2 (RNAV) STAR DME_240904.tgs
Output File:	C:\Users\Mark CTR Thompson\OneDrive - Federal Aviation Administration\Desktop\RNAV Projects\RNAV Projects 2025\TPA.SRQ STARS_250417\KTPA DADES2 (RNAV) STAR\DME\KTPA [IFPA] DADES2 20240904_0741 EDT\NICCK_ROSTR\KTPA DADES2 RNAV STAR NICCK ROSTR 20240904_0741 EDT.pdf
Procedure Name:	DADES2
Software: DmeDmePlugin:	7.3.3
Date/Time:	09/04/2024 07:41 EDT
Databases:	MITRE 3DEP 3 arcsec

Failures

No Failures

Warnings

No Warnings

Informational

No Informational

Notes For Flight Check

None

Flight Plan

Name	Type	Lat/Lon	Altitude (ft)	VNAV Mode	Ground Speed (kts)	Turn Type	Leg Type
NICCK	WP	N29° 11' 16.48", W081° 10' 10.16"	5000	VNAV	200	FLY_BY	TF
DRUDJ	WP	N28° 42' 49.75", W081° 07' 05.77"	5000	VNAV	200	FLY_BY	TF
ROSTR	WP	N28° 29' 20.92", W081° 19' 27.98"	5000	VNAV	200	FLY_BY	TF

Flyability

Flight Type:	RNAV_STAR
Selected Airport:	KTPA [IFPA]
Climb Gradient:	None assigned
Speeds:	200 Ground Speed to 11000 FT
	240 Ground Speed to 18000 FT
	260 Ground Speed to 24000 FT
	340 Ground Speed above 24000 FT
Descent During a Turn:	Allowed
VNAV Mode:	Flight Plan

DME DME Assessment Results for DADES2 path NICCK_ROSTR

DME/DME	
RNP:	RNP 2
Flight Mode:	Manual
Line of Sight (DTED Level 0 Max):	Evaluated
Inertial Drift:	Enabled
Initial Drift:	0.558 NM
INS Drift Rate:	8.0 NM/Hour
Range Mode:	OSV
RNP Edges:	Evaluated
Min DME Range:	3.0 NM
DME Types:	DME, VOR-DME, VORTAC
DME Include Angles:	30 to 150
Critical DMEs:	Allowed
DoD Facilities:	Not included
Foreign Facilities:	Included
High DMEs:	Included
Low DMEs:	Included
Terminal DMEs:	Included
Flight Check DMEs:	Not selected
Higher Altitudes:	Not Evaluated
Near Maximum Altitude:	Not Evaluated
Automatic ESVs:	Not enabled
Disabled DMEs:	None

DME/DME (Continued)										
DMEs Used										
#	Name	Lat/Lon	MAGVAR	Range	Type	Source	Critical	Status	Time	Distance
1	LAL	N27° 59' 10.31", W082° 00' 50.06"	1.0 E	130	H	IFPA	NO	Enabled		
2	OMN	N29° 18' 11.70", W081° 06' 45.71"	0.0 E	130	H	IFPA	NO	Enabled		
3	GNV	N29° 41' 31.61", W082° 16' 22.70"	4.0 W	40	L	IFPA	NO	Enabled		
4	OCF	N29° 10' 38.92", W082° 13' 34.80"	0.0 E	40	L	IFPA	NO	Enabled		
5	MLB	N28° 06' 19.12", W080° 38' 06.46"	7.0 W	130	DH	IFPA	NO	Enabled		
6	ORL	N28° 32' 33.80", W081° 20' 06.05"	0.0 E	130	H	IFPA	NO	Enabled		

Flight Check DME Selection						
Distance [NM]	Selected DMEs					Alternate
0.0	GNV [IFPA]	OMN [IFPA]	OCF [IFPA]	MLB [IFPA]		
1.2	GNV [IFPA]	OMN [IFPA]	OCF [IFPA]	ORL [IFPA]	MLB [IFPA]	
2.8	OCF [IFPA]	ORL [IFPA]	OMN [IFPA]	MLB [IFPA]		
24.5	LAL [IFPA]	MLB [IFPA]	OCF [IFPA]	ORL [IFPA]	OMN [IFPA]	
31.2	ORL [IFPA]	MLB [IFPA]	LAL [IFPA]	OCF [IFPA]		
40.5	LAL [IFPA]	MLB [IFPA]	OCF [IFPA]	OMN [IFPA]	ORL [IFPA]	
41.9	OCF [IFPA]	LAL [IFPA]	MLB [IFPA]	OMN [IFPA]		
42.5	OCF [IFPA]	LAL [IFPA]	MLB [IFPA]			

Inertial Drift Segments			
#	Start Location	End Location	Length [NM]

DME DME Assessment Results for DADES2 path NICCK_ROSTR

Available DMEs by Waypoints			
Waypoint Before	Waypoint After	DME List	Suggested DMEs
NICCK	DRUDJ	LAL [IFPA], OMN [IFPA], GNV [IFPA], OCF [IFPA], MLB [IFPA], ORL [IFPA]	
DRUDJ	ROSTR	LAL [IFPA], OMN [IFPA], OCF [IFPA], MLB [IFPA], ORL [IFPA]	

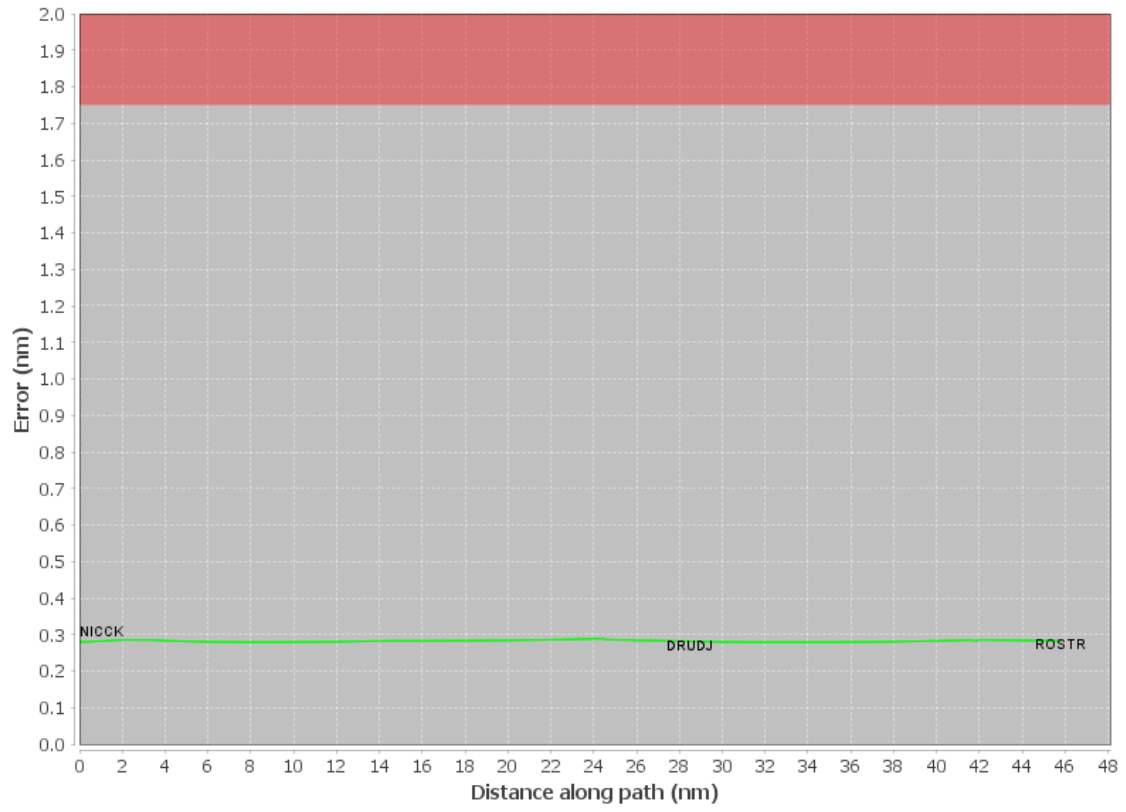
DME DME Assessment Results for DADES2 path NICCK_ROSTR

User Data Files								
#	File Name							
None								
User DMEs								
#	Name	Lat/Lon	MAGVAR	Range	Elevation [ft]	Frequency	Replaces	Status
1	ORL FAA 694096-44 ORL [IFPA]	N28° 32' 33.80", W081° 20' 06.05"	0.0 E	130	101.6	112.2	ORL FAA 694096-44	
ESV:		Bearing [True]: 250.0° to 300.0° Bearing [Mag]: 250.0° to 300.0°				Arc Distance: Out to 78.0 NM Altitude: 4000.0 to 14700.0 ft		
2	CTY FAA 704013-38 CTY [IFPA]	N29° 35' 56.40", W083° 02' 55.65"	2.0 W	40	33.8	112.0	CTY FAA 704013-38	
ESV:		Bearing [True]: 55.0° to 90.0° Bearing [Mag]: 57.0° to 92.0°				Arc Distance: Out to 60.0 NM Altitude: 4000.0 to 14500.0 ft		
3	CRG FAA 698166-35 CRG [IFPA]	N30° 20' 19.97", W081° 30' 35.74"	3.0 W	130	41.9	114.5	CRG FAA 698166-35	
ESV:		Bearing [True]: 237.0° to 300.0° Bearing [Mag]: 240.0° to 303.0°				Arc Distance: Out to 61.0 NM Altitude: 2900.0 to 14600.0 ft		
4	CTY FAA 704013-60 CTY [IFPA]	N29° 35' 56.40", W083° 02' 55.65"	2.0 W	40	33.8	112.0	CTY FAA 704013-60	
ESV:		Bearing [True]: 97.0° to 114.0° Bearing [Mag]: 99.0° to 116.0°				Arc Distance: Out to 55.0 NM Altitude: 2900.0 to 18100.0 ft		
5	OCF FAA 714002-35 OCF [IFPA]	N29° 10' 38.92", W082° 13' 34.80"	0.0 E	40	78.3	113.7	OCF FAA 714002-35	
ESV:		Bearing [True]: 70.0° to 180.0° Bearing [Mag]: 70.0° to 180.0°				Arc Distance: Out to 80.0 NM Altitude: 5000.0 to 18000.0 ft		
6	GNV FAA 704230-51 GNV [IFPA]	N29° 41' 31.61", W082° 16' 22.70"	4.0 W	40	127.5	116.2	GNV FAA 704230-51	
ESV:		Bearing [True]: 114.0° to 122.0° Bearing [Mag]: 118.0° to 126.0°				Arc Distance: Out to 70.0 NM Altitude: 4900.0 to 18200.0 ft		
7	OMN FAA 694106-20 OMN [IFPA]	N29° 18' 11.70", W081° 06' 45.71"	0.0 E	130	24	112.6	OMN FAA 694106-20	
ESV:		Bearing [True]: 190.0° to 255.0° Bearing [Mag]: 190.0° to 255.0°				Arc Distance: Out to 72.0 NM Altitude: 3000.0 to 14600.0 ft		
8	OMN FAA 694106-62 OMN [IFPA]	N29° 18' 11.70", W081° 06' 45.71"	0.0 E	130	24	112.6	OMN FAA 694106-62	
ESV:		Bearing [True]: 94.0° to 120.0° Bearing [Mag]: 94.0° to 120.0°				Arc Distance: Out to 85.0 NM Altitude: 9900.0 to 14600.0 ft		
9	CTY FAA 704013-58 CTY [IFPA]	N29° 35' 56.40", W083° 02' 55.65"	2.0 W	40	33.8	112.0	CTY FAA 704013-58	
ESV:		Bearing [True]: 6.0° to 47.0° Bearing [Mag]: 8.0° to 49.0°				Arc Distance: Out to 67.0 NM Altitude: 4900.0 to 18100.0 ft		
10	ORL FAA 694096-78 ORL [IFPA]	N28° 32' 33.80", W081° 20' 06.05"	0.0 E	130	101.6	112.2	ORL FAA 694096-78	
ESV:		Bearing [True]: 63.0° to 78.0° Bearing [Mag]: 63.0° to 78.0°				Arc Distance: Out to 99.0 NM Altitude: 8500.0 to 14700.0 ft		
11	LAL FAA 704224-41 LAL [IFPA]	N27° 59' 10.31", W082° 00' 50.06"	1.0 E	130	133.8	116.0	LAL FAA 704224-41	
ESV:		Bearing [True]: 360.0° to 77.0° Bearing [Mag]: 359.0° to 76.0°				Arc Distance: Out to 70.0 NM Altitude: 3000.0 to 14700.0 ft		
12	OMN FAA 694106-23 OMN [IFPA]	N29° 18' 11.70", W081° 06' 45.71"	0.0 E	130	24	112.6	OMN FAA 694106-23	
ESV:		Bearing [True]: 113.0° to 187.0° Bearing [Mag]: 113.0° to 187.0°				Arc Distance: Out to 70.0 NM Altitude: 4000.0 to 18000.0 ft		
13	TRV FAA 704266-83 TRV [IFPA]	N27° 40' 42.26", W080° 29' 23.04"	7.0 W	130	18.9	117.3	TRV FAA 704266-83	
ESV:		Bearing [True]: 351.0° to 33.0° Bearing [Mag]: 358.0° to 40.0°				Arc Distance: Out to 101.0 NM Altitude: 8500.0 to 18100.0 ft		
14	GNV FAA 704230-32 GNV [IFPA]	N29° 41' 31.61", W082° 16' 22.70"	4.0 W	40	127.5	116.2	GNV FAA 704230-32	
ESV:		Bearing [True]: 325.0° to 20.0° Bearing [Mag]: 329.0° to 24.0°				Arc Distance: Out to 75.0 NM Altitude: 4000.0 to 14500.0 ft		
15	OMN FAA 694106-65 OMN [IFPA]	N29° 18' 11.70", W081° 06' 45.71"	0.0 E	130	24	112.6	OMN FAA 694106-65	
ESV:		Bearing [True]: 269.0° to 284.0° Bearing [Mag]: 269.0° to 284.0°				Arc Distance: Out to 61.0 NM Altitude: 2900.0 to 14600.0 ft		
16	AYS FAA 698108-10 AYS [IFPA]	N31° 16' 09.93", W082° 33' 23.20"	0.0 E	40	154.8	110.2	AYS FAA 698108-10	
ESV:		Bearing [True]: 148.0° to 215.0° Bearing [Mag]: 148.0° to 215.0°				Arc Distance: Out to 61.0 NM Altitude: 2900.0 to 18200.0 ft		

DME DME Assessment Results for DADES2 path NICCK_ROSTR

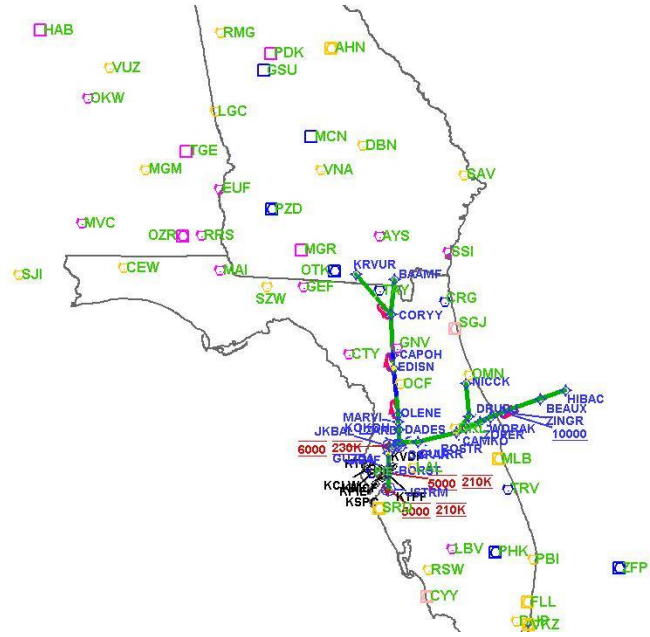
DME DME Assessment Results for DADES2 path NICCK_ROSTR

DME Error



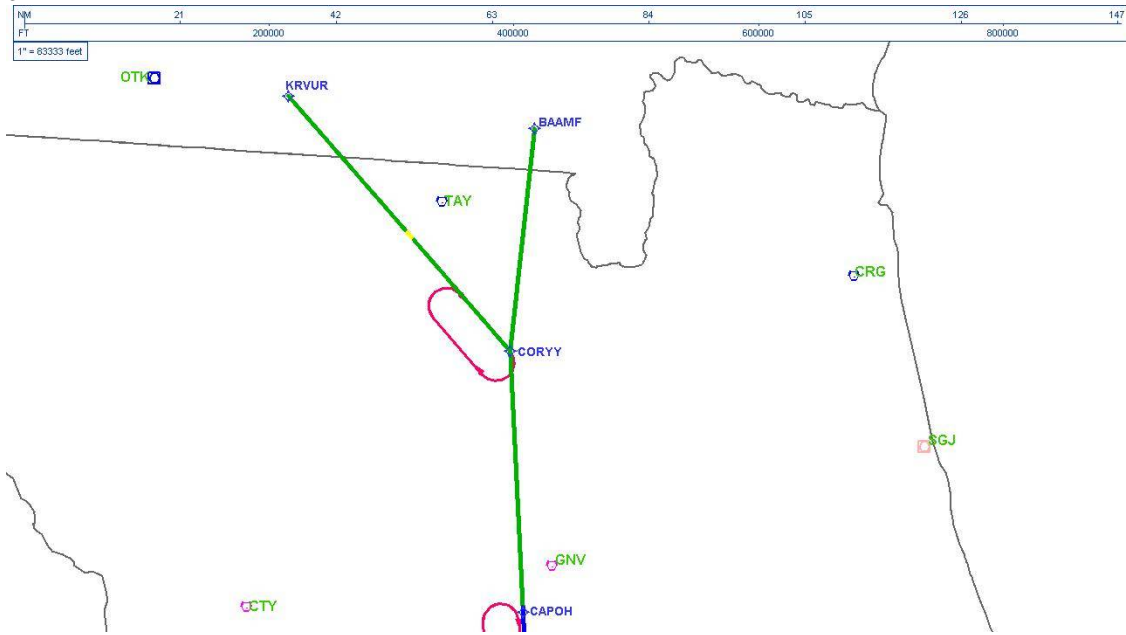
DME DME Assessment Results for DADES2 path NICCK_ROSTR

Graphic Depiction 1



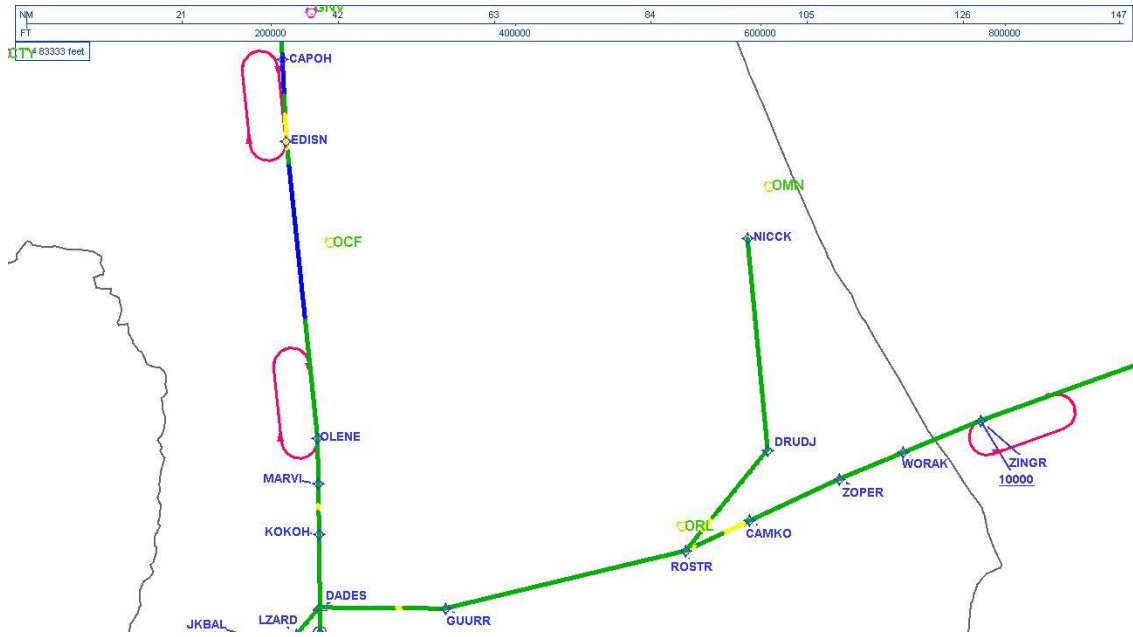
DME DME Assessment Results for DADES2 path NICCK_ROSTR

Graphic Depiction 3



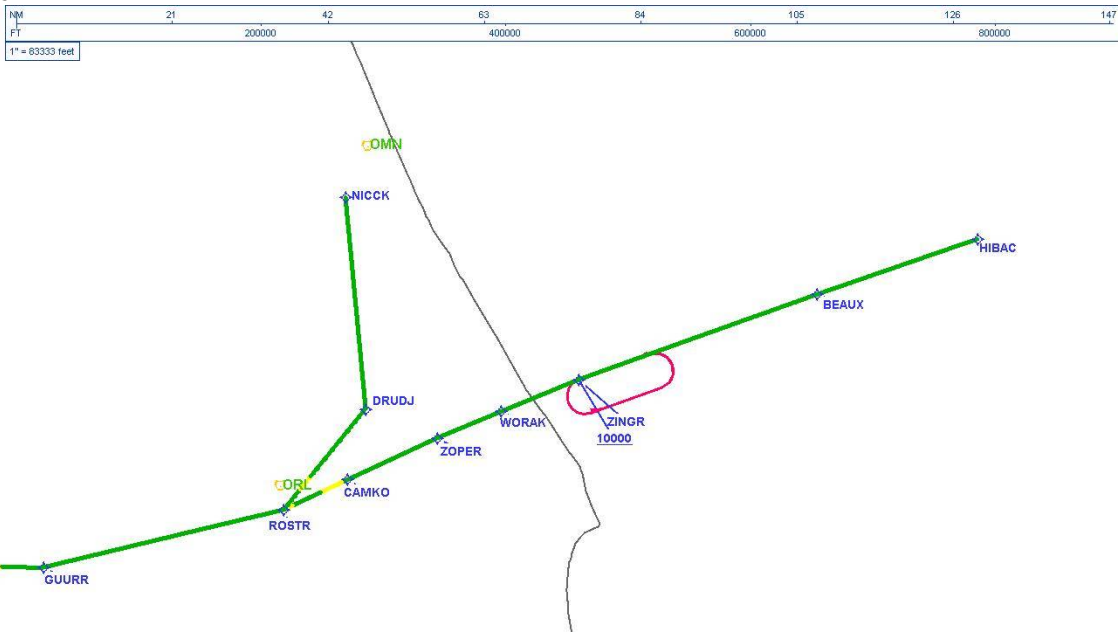
DME DME Assessment Results for DADES2 path NICCK_ROSTR

Graphic Depiction 4



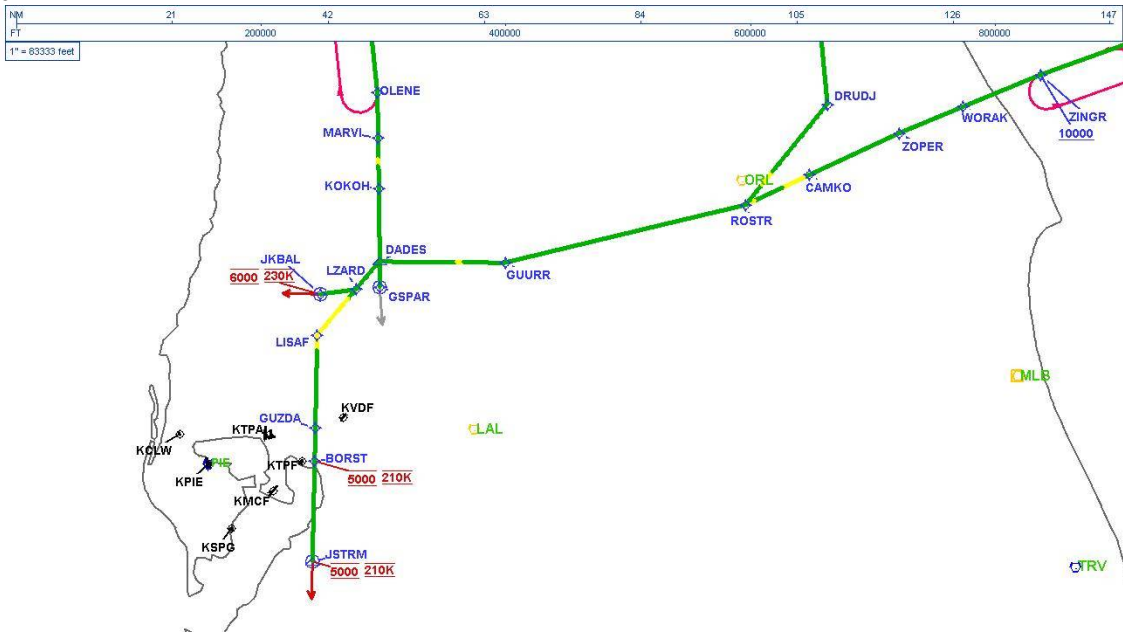
DME DME Assessment Results for DADES2 path NICCK_ROSTR

Graphic Depiction 5



DME DME Assessment Results for DADES2 path NICCK_ROSTR

Graphic Depiction 6



DME DME Assessment Results for DADES2 path CORYY_KRVUR

Results Summary

Flyability:	Completed
DME/DME:	Completed - No Critical DMEs
Name:	Mark CTR Thompson
Project File:	C:\Users\Mark CTR Thompson\OneDrive - Federal Aviation Administration\Desktop\RNAV Projects\RNAV Projects 2025\TPA.SRQ STARS_250417\KTPA DADES2 (RNAV) STAR\DME\KTPA DADES2 (RNAV) STAR DME_240904.tgs
Output File:	C:\Users\Mark CTR Thompson\OneDrive - Federal Aviation Administration\Desktop\RNAV Projects\RNAV Projects 2025\TPA.SRQ STARS_250417\KTPA DADES2 (RNAV) STAR\DME\KTPA [IFPA] DADES2 20240904_0741 EDT\CORYY_KRVUR\KTPA DADES2 RNAV STAR CORYY KRVUR 20240904_0741 EDT.pdf
Procedure Name:	DADES2
Software: DmeDmePlugin:	7.3.3
Date/Time:	09/04/2024 07:41 EDT
Databases:	MITRE 3DEP 3 arcsec

Failures

No Failures

Warnings

No Warnings

Informational

No Informational

Notes For Flight Check

None

Flight Plan

Name	Type	Lat/Lon	Altitude (ft)	VNAV Mode	Ground Speed (kts)	Turn Type	Leg Type
CORYY	WP	N30° 10' 15.89", W082° 22' 46.33"	5000	VNAV	200	FLY_BY	TF
KRVUR	WP	N30° 44' 32.15", W082° 56' 30.39"	5000	VNAV	200	FLY_BY	TF

Flyability

Flight Type:	RNAV_STAR
Selected Airport:	KTPA [IFPA]
Climb Gradient:	None assigned
Speeds:	200 Ground Speed to 11000 FT
	240 Ground Speed to 18000 FT
	260 Ground Speed to 24000 FT
	340 Ground Speed above 24000 FT
Descent During a Turn:	Allowed
VNAV Mode:	Flight Plan

DME DME Assessment Results for DADES2 path CORYY_KRVUR

DME/DME	
RNP:	RNP 2
Flight Mode:	Manual
Line of Sight (DTED Level 0 Max):	Evaluated
Inertial Drift:	Enabled
Initial Drift:	0.558 NM
INS Drift Rate:	8.0 NM/Hour
Range Mode:	OSV
RNP Edges:	Evaluated
Min DME Range:	3.0 NM
DME Types:	DME, VOR-DME, VORTAC
DME Include Angles:	30 to 150
Critical DMEs:	Allowed
DoD Facilities:	Not included
Foreign Facilities:	Included
High DMEs:	Included
Low DMEs:	Included
Terminal DMEs:	Included
Flight Check DMEs:	Not selected
Higher Altitudes:	Not Evaluated
Near Maximum Altitude:	Not Evaluated
Automatic ESVs:	Not enabled
Disabled DMEs:	None

DME/DME (Continued)										
DMEs Used										
#	Name	Lat/Lon	MAGVAR	Range	Type	Source	Critical	Status	Time	Distance
1	TAY	N30° 30' 16.70", W082° 33' 10.45"	3.0 W	130	H	IFPA	NO	Enabled		
2	CRG	N30° 20' 19.97", W081° 30' 35.74"	3.0 W	130	H	IFPA	NO	Enabled		
3	OTK	N30° 46' 49.60", W083° 16' 47.02"	2.0 W	130	H	IFPA	NO	Enabled		
4	GNV	N29° 41' 31.61", W082° 16' 22.70"	4.0 W	40	L	IFPA	NO	Enabled		
5	CTY	N29° 35' 56.40", W083° 02' 55.65"	2.0 W	40	L	IFPA	NO	Enabled		
6	AYS	N31° 16' 09.93", W082° 33' 23.20"	0.0 E	40	L	IFPA	NO	Enabled		

Flight Check DME Selection						
Distance [NM]	Selected DMEs					Alternate
0.0	CRG [IFPA]	GNV [IFPA]	TAY [IFPA]	CTY [IFPA]		
9.8	CRG [IFPA]	AYS [IFPA]	TAY [IFPA]	GNV [IFPA]	CTY [IFPA]	
18.9	CRG [IFPA]	AYS [IFPA]	CTY [IFPA]	GNV [IFPA]		
19.9	CRG [IFPA]	AYS [IFPA]	TAY [IFPA]	OTK [IFPA]	CTY [IFPA]	GNV [IFPA]
21.3	CTY [IFPA]	OTK [IFPA]	AYS [IFPA]	GNV [IFPA]		
23.3	GNV [IFPA]	TAY [IFPA]	CTY [IFPA]	OTK [IFPA]	AYS [IFPA]	
37.7	AYS [IFPA]	OTK [IFPA]	TAY [IFPA]	GNV [IFPA]		

Inertial Drift Segments			
#	Start Location	End Location	Length [NM]

DME DME Assessment Results for DADES2 path CORYY_KRVUR

Available DMEs by Waypoints			
Waypoint Before	Waypoint After	DME List	Suggested DMEs
CORYY	KRVUR	TAY [IFPA], CRG [IFPA], OTK [IFPA], GNV [IFPA], CTY [IFPA], AYS [IFPA]	

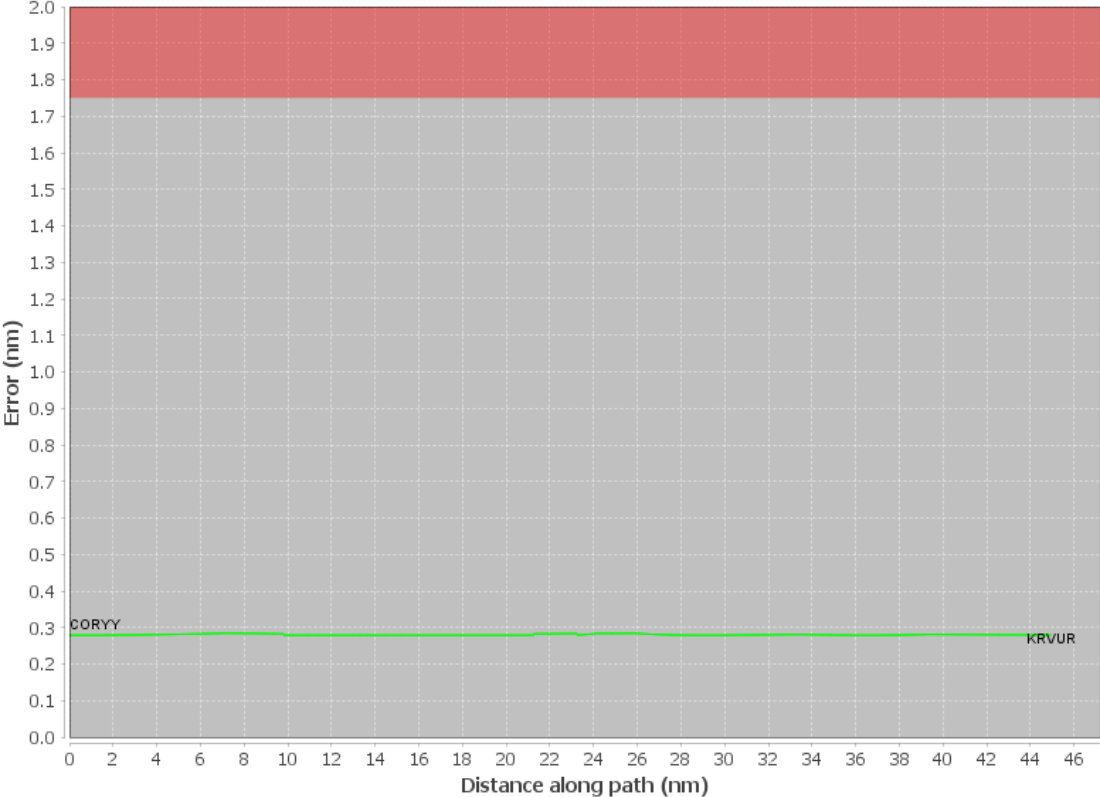
DME DME Assessment Results for DADES2 path CORYY_KRVUR

User Data Files								
#	File Name							
None								
User DMEs								
#	Name	Lat/Lon	MAGVAR	Range	Elevation [ft]	Frequency	Replaces	Status
1	ORL FAA 694096-44 ORL [IFPA]	N28° 32' 33.80", W081° 20' 06.05"	0.0 E	130	101.6	112.2	ORL FAA 694096-44	
ESV:		Bearing [True]: 250.0° to 300.0° Bearing [Mag]: 250.0° to 300.0°				Arc Distance: Out to 78.0 NM Altitude: 4000.0 to 14700.0 ft		
2	CTY FAA 704013-38 CTY [IFPA]	N29° 35' 56.40", W083° 02' 55.65"	2.0 W	40	33.8	112.0	CTY FAA 704013-38	
ESV:		Bearing [True]: 55.0° to 90.0° Bearing [Mag]: 57.0° to 92.0°				Arc Distance: Out to 60.0 NM Altitude: 4000.0 to 14500.0 ft		
3	CRG FAA 698166-35 CRG [IFPA]	N30° 20' 19.97", W081° 30' 35.74"	3.0 W	130	41.9	114.5	CRG FAA 698166-35	
ESV:		Bearing [True]: 237.0° to 300.0° Bearing [Mag]: 240.0° to 303.0°				Arc Distance: Out to 61.0 NM Altitude: 2900.0 to 14600.0 ft		
4	CTY FAA 704013-60 CTY [IFPA]	N29° 35' 56.40", W083° 02' 55.65"	2.0 W	40	33.8	112.0	CTY FAA 704013-60	
ESV:		Bearing [True]: 97.0° to 114.0° Bearing [Mag]: 99.0° to 116.0°				Arc Distance: Out to 55.0 NM Altitude: 2900.0 to 18100.0 ft		
5	OCF FAA 714002-35 OCF [IFPA]	N29° 10' 38.92", W082° 13' 34.80"	0.0 E	40	78.3	113.7	OCF FAA 714002-35	
ESV:		Bearing [True]: 70.0° to 180.0° Bearing [Mag]: 70.0° to 180.0°				Arc Distance: Out to 80.0 NM Altitude: 5000.0 to 18000.0 ft		
6	GNV FAA 704230-51 GNV [IFPA]	N29° 41' 31.61", W082° 16' 22.70"	4.0 W	40	127.5	116.2	GNV FAA 704230-51	
ESV:		Bearing [True]: 114.0° to 122.0° Bearing [Mag]: 118.0° to 126.0°				Arc Distance: Out to 70.0 NM Altitude: 4900.0 to 18200.0 ft		
7	OMN FAA 694106-20 OMN [IFPA]	N29° 18' 11.70", W081° 06' 45.71"	0.0 E	130	24	112.6	OMN FAA 694106-20	
ESV:		Bearing [True]: 190.0° to 255.0° Bearing [Mag]: 190.0° to 255.0°				Arc Distance: Out to 72.0 NM Altitude: 3000.0 to 14600.0 ft		
8	OMN FAA 694106-62 OMN [IFPA]	N29° 18' 11.70", W081° 06' 45.71"	0.0 E	130	24	112.6	OMN FAA 694106-62	
ESV:		Bearing [True]: 94.0° to 120.0° Bearing [Mag]: 94.0° to 120.0°				Arc Distance: Out to 85.0 NM Altitude: 9900.0 to 14600.0 ft		
9	CTY FAA 704013-58 CTY [IFPA]	N29° 35' 56.40", W083° 02' 55.65"	2.0 W	40	33.8	112.0	CTY FAA 704013-58	
ESV:		Bearing [True]: 6.0° to 47.0° Bearing [Mag]: 8.0° to 49.0°				Arc Distance: Out to 67.0 NM Altitude: 4900.0 to 18100.0 ft		
10	ORL FAA 694096-78 ORL [IFPA]	N28° 32' 33.80", W081° 20' 06.05"	0.0 E	130	101.6	112.2	ORL FAA 694096-78	
ESV:		Bearing [True]: 63.0° to 78.0° Bearing [Mag]: 63.0° to 78.0°				Arc Distance: Out to 99.0 NM Altitude: 8500.0 to 14700.0 ft		
11	LAL FAA 704224-41 LAL [IFPA]	N27° 59' 10.31", W082° 00' 50.06"	1.0 E	130	133.8	116.0	LAL FAA 704224-41	
ESV:		Bearing [True]: 360.0° to 77.0° Bearing [Mag]: 359.0° to 76.0°				Arc Distance: Out to 70.0 NM Altitude: 3000.0 to 14700.0 ft		
12	OMN FAA 694106-23 OMN [IFPA]	N29° 18' 11.70", W081° 06' 45.71"	0.0 E	130	24	112.6	OMN FAA 694106-23	
ESV:		Bearing [True]: 113.0° to 187.0° Bearing [Mag]: 113.0° to 187.0°				Arc Distance: Out to 70.0 NM Altitude: 4000.0 to 18000.0 ft		
13	TRV FAA 704266-83 TRV [IFPA]	N27° 40' 42.26", W080° 29' 23.04"	7.0 W	130	18.9	117.3	TRV FAA 704266-83	
ESV:		Bearing [True]: 351.0° to 33.0° Bearing [Mag]: 358.0° to 40.0°				Arc Distance: Out to 101.0 NM Altitude: 8500.0 to 18100.0 ft		
14	GNV FAA 704230-32 GNV [IFPA]	N29° 41' 31.61", W082° 16' 22.70"	4.0 W	40	127.5	116.2	GNV FAA 704230-32	
ESV:		Bearing [True]: 325.0° to 20.0° Bearing [Mag]: 329.0° to 24.0°				Arc Distance: Out to 75.0 NM Altitude: 4000.0 to 14500.0 ft		
15	OMN FAA 694106-65 OMN [IFPA]	N29° 18' 11.70", W081° 06' 45.71"	0.0 E	130	24	112.6	OMN FAA 694106-65	
ESV:		Bearing [True]: 269.0° to 284.0° Bearing [Mag]: 269.0° to 284.0°				Arc Distance: Out to 61.0 NM Altitude: 2900.0 to 14600.0 ft		
16	AYS FAA 698108-10 AYS [IFPA]	N31° 16' 09.93", W082° 33' 23.20"	0.0 E	40	154.8	110.2	AYS FAA 698108-10	
ESV:		Bearing [True]: 148.0° to 215.0° Bearing [Mag]: 148.0° to 215.0°				Arc Distance: Out to 61.0 NM Altitude: 2900.0 to 18200.0 ft		

DME DME Assessment Results for DADES2 path CORYY_KRVUR

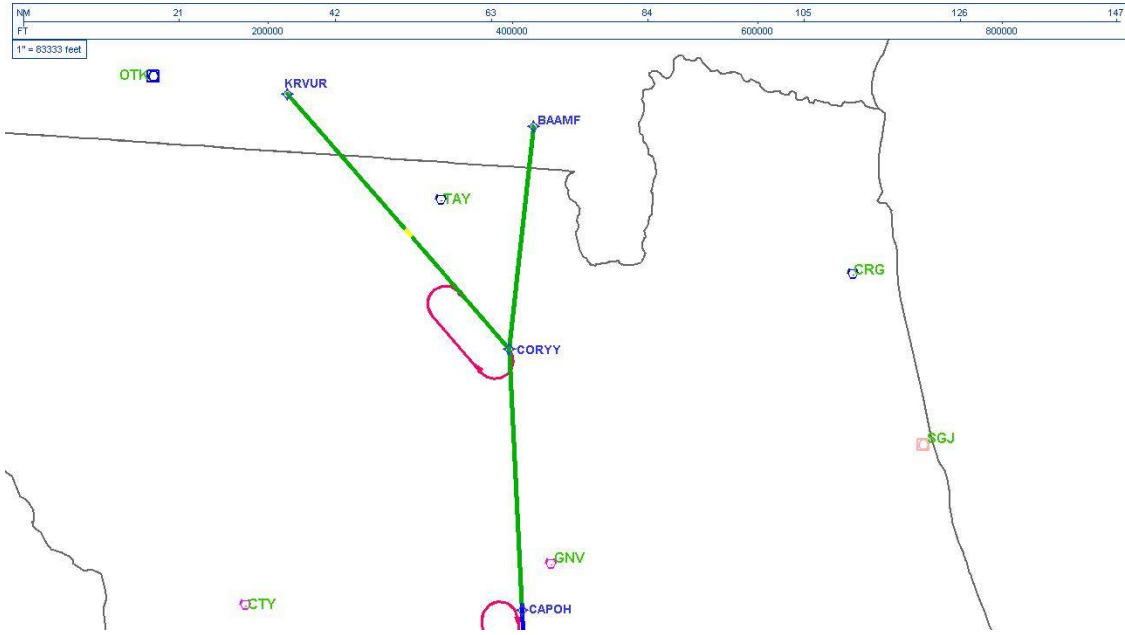
DME DME Assessment Results for DADES2 path CORYY_KRVUR

DME Error



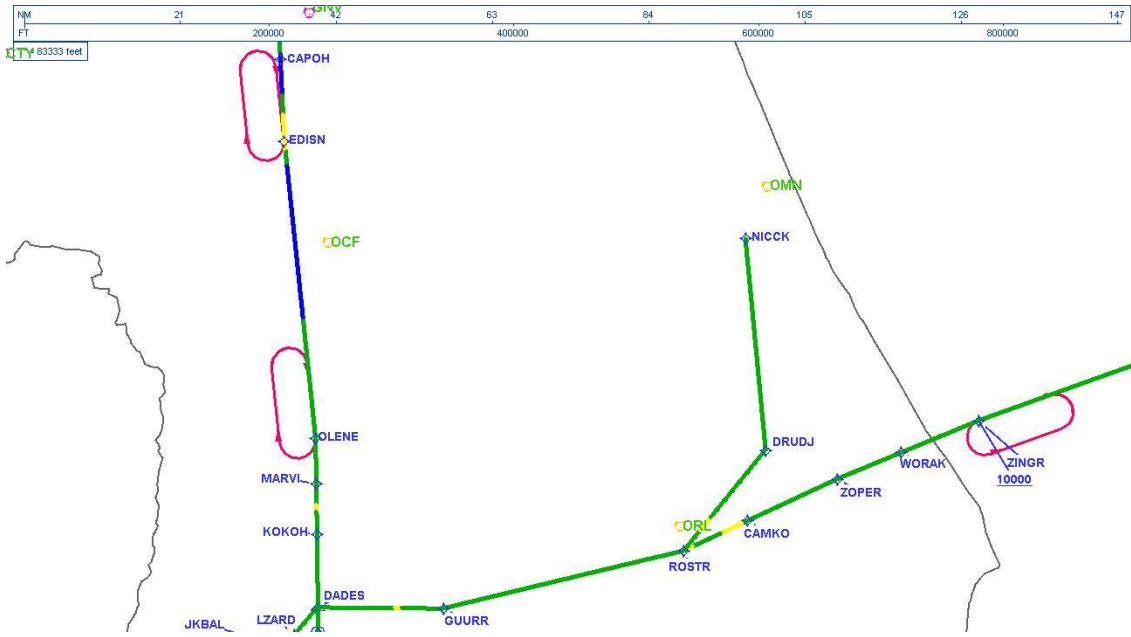
DME DME Assessment Results for DADES2 path CORYY_KRVUR

Graphic Depiction 3



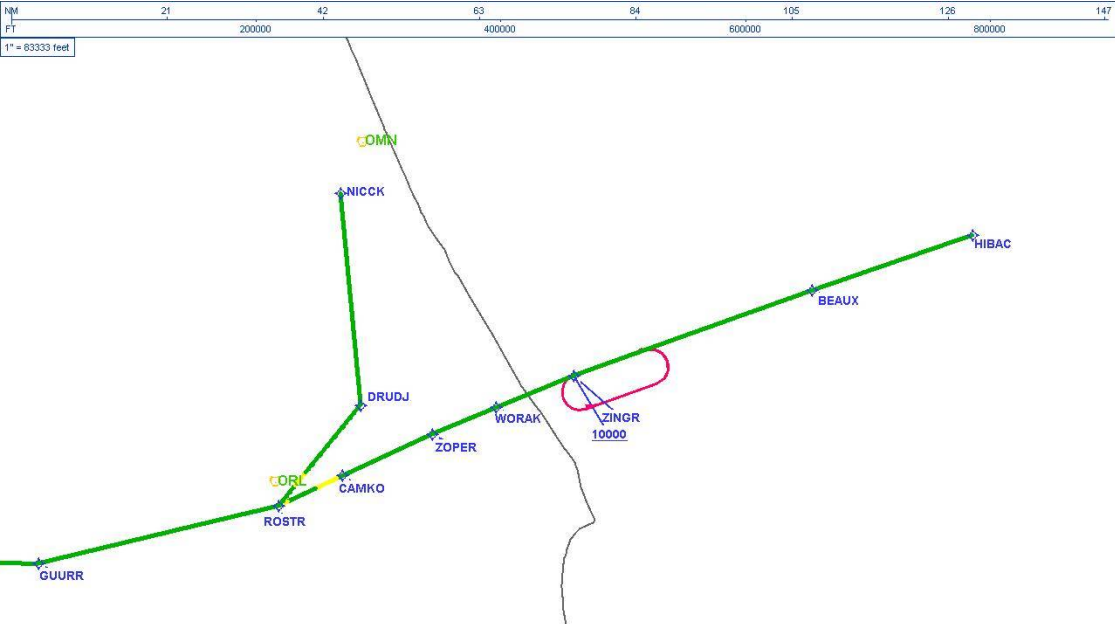
DME DME Assessment Results for DADES2 path CORYY_KRVUR

Graphic Depiction 4



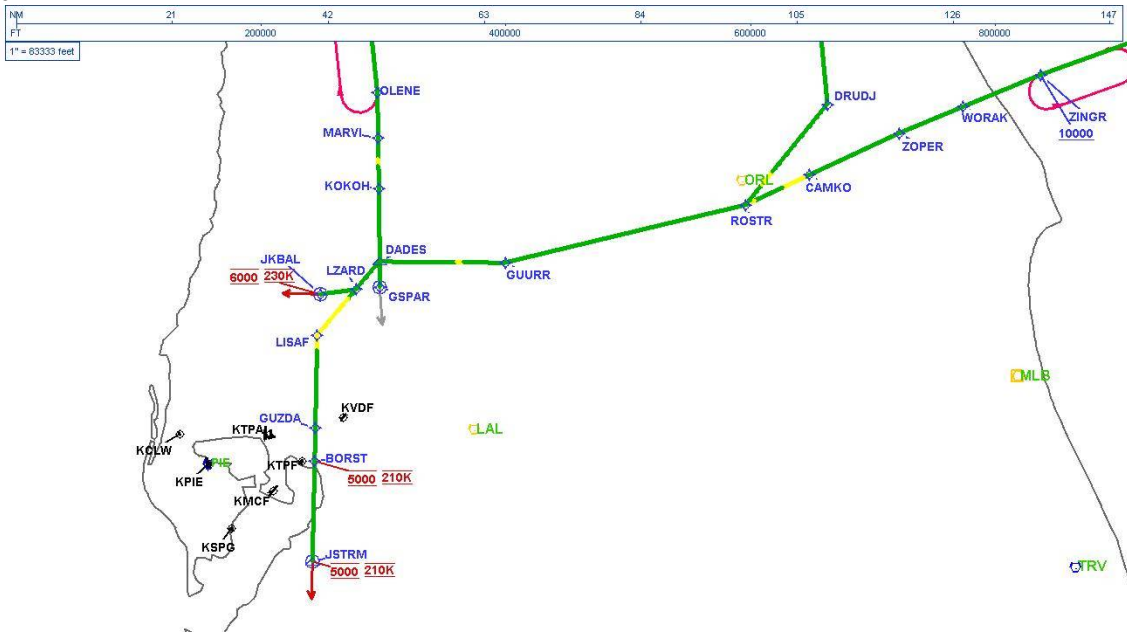
DME DME Assessment Results for DADES2 path CORYY_KRVUR

Graphic Depiction 5



DME DME Assessment Results for DADES2 path CORYY_KRVUR

Graphic Depiction 6



DME DME Assessment Results for DADES2 path DADES_BAAMF

Results Summary

Flyability:	Completed
DME/DME:	Completed - No Critical DMEs
Name:	Mark CTR Thompson
Project File:	C:\Users\Mark CTR Thompson\OneDrive - Federal Aviation Administration\Desktop\RNAV Projects\RNAV Projects 2025\TPA.SRQ STARS_250417\KTPA DADES2 (RNAV) STAR\DME\KTPA DADES2 (RNAV) STAR DME_240904.tgs
Output File:	C:\Users\Mark CTR Thompson\OneDrive - Federal Aviation Administration\Desktop\RNAV Projects\RNAV Projects 2025\TPA.SRQ STARS_250417\KTPA DADES2 (RNAV) STAR\DME\KTPA [IFPA] DADES2 20240904_0741 EDT\DADES_BAAMF\KTPA DADES2 RNAV STAR DADES BAAMF 20240904_0741 EDT.pdf
Procedure Name:	DADES2
Software: DmeDmePlugin:	7.3.3
Date/Time:	09/04/2024 07:41 EDT
Databases:	MITRE 3DEP 3 arcsec

Failures

No Failures

Warnings

No Warnings

Informational

No Informational

Notes For Flight Check

None

Flight Plan

Name	Type	Lat/Lon	Altitude (ft)	VNAV Mode	Ground Speed (kts)	Turn Type	Leg Type
DADES	WP	N28° 21' 45.62", W082° 15' 07.80"	5000	VNAV	200	FLY_BY	TF
KOKOH	WP	N28° 31' 34.74", W082° 15' 15.54"	5000	VNAV	200	FLY_BY	TF
MARVI	WP	N28° 38' 21.83", W082° 15' 23.32"	5000	VNAV	200	FLY_BY	TF
OLENE	WP	N28° 44' 23.26", W082° 15' 28.85"	5000	VNAV	200	FLY_BY	TF
EDISN	WP	N29° 24' 14.67", W082° 20' 13.11"	5000	VNAV	200	FLY_BY	TF
CAPOH	WP	N29° 35' 15.58", W082° 20' 49.56"	5000	VNAV	200	FLY_BY	TF
CORYY	WP	N30° 10' 15.89", W082° 22' 46.33"	5000	VNAV	200	FLY_BY	TF
BAAMF	WP	N30° 40' 13.18", W082° 19' 02.47"	5000	VNAV	200	FLY_BY	TF

Flyability

Flight Type:	RNAV_STAR
Selected Airport:	KTPA [IFPA]
Climb Gradient:	None assigned
Speeds:	200 Ground Speed to 11000 FT
	240 Ground Speed to 18000 FT
	260 Ground Speed to 24000 FT
	340 Ground Speed above 24000 FT
Descent During a Turn:	Allowed
VNAV Mode:	Flight Plan

DME DME Assessment Results for DADES2 path DADES_BAAMF

DME/DME	
RNP:	RNP 2
Flight Mode:	Manual
Line of Sight (DTED Level 0 Max):	Evaluated
Inertial Drift:	Enabled
Initial Drift:	0.558 NM
INS Drift Rate:	8.0 NM/Hour
Range Mode:	OSV
RNP Edges:	Evaluated
Min DME Range:	3.0 NM
DME Types:	DME, VOR-DME, VORTAC
DME Include Angles:	30 to 150
Critical DMEs:	Allowed
DoD Facilities:	Not included
Foreign Facilities:	Included
High DMEs:	Included
Low DMEs:	Included
Terminal DMEs:	Included
Flight Check DMEs:	Not selected
Higher Altitudes:	Not Evaluated
Near Maximum Altitude:	Not Evaluated
Automatic ESVs:	Not enabled
Disabled DMEs:	None

DME/DME (Continued)										
DMEs Used										
#	Name	Lat/Lon	MAGVAR	Range	Type	Source	Critical	Status	Time	Distance
1	LAL	N27° 59' 10.31", W082° 00' 50.06"	1.0 E	130	H	IFPA	NO	Enabled		
2	TAY	N30° 30' 16.70", W082° 33' 10.45"	3.0 W	130	H	IFPA	NO	Enabled		
3	CRG	N30° 20' 19.97", W081° 30' 35.74"	3.0 W	130	H	IFPA	NO	Enabled		
4	SRQ	N27° 24' 25.26", W082° 33' 49.18"	5.0 W	130	DH	IFPA	NO	Enabled		
5	OMN	N29° 18' 11.70", W081° 06' 45.71"	0.0 E	130	H	IFPA	NO	Enabled		
6	PIE	N27° 54' 27.95", W082° 41' 03.51"	5.0 W	130	H	IFPA	NO	Enabled		
7	GNV	N29° 41' 31.61", W082° 16' 22.70"	4.0 W	40	L	IFPA	NO	Enabled		
8	CTY	N29° 35' 56.40", W083° 02' 55.65"	2.0 W	40	L	IFPA	NO	Enabled		
9	OCF	N29° 10' 38.92", W082° 13' 34.80"	0.0 E	40	L	IFPA	NO	Enabled		
10	AYS	N31° 16' 09.93", W082° 33' 23.20"	0.0 E	40	L	IFPA	NO	Enabled		
11	ORL	N28° 32' 33.80", W081° 20' 06.05"	0.0 E	130	H	IFPA	NO	Enabled		

DME DME Assessment Results for DADES2 path DADES_BAAMF

Flight Check DME Selection						
Distance [NM]	Selected DMEs					Alternate
0.0	ORL [IFPA]	LAL [IFPA]	PIE [IFPA]	SRQ [IFPA]		
2.3	ORL [IFPA]	LAL [IFPA]	SRQ [IFPA]			
9.3	ORL [IFPA]	OCF [IFPA]	SRQ [IFPA]	LAL [IFPA]		
13.8	ORL [IFPA]	OCF [IFPA]	SRQ [IFPA]			
16.7	ORL [IFPA]	OCF [IFPA]				
24.3	ORL [IFPA]	OCF [IFPA]	OMN [IFPA]			
36.9	OMN [IFPA]	OCF [IFPA]				
38.8						
59.5	CTY [IFPA]	GNV [IFPA]				
61.5	CTY [IFPA]	GNV [IFPA]	OCF [IFPA]			
68.9						
74.4	CTY [IFPA]	OCF [IFPA]	GNV [IFPA]			
75.2	CTY [IFPA]	OCF [IFPA]				
82.6	CTY [IFPA]	OCF [IFPA]	GNV [IFPA]			
87.6	CTY [IFPA]	GNV [IFPA]				
90.9	CTY [IFPA]	GNV [IFPA]	TAY [IFPA]			
91.9	CTY [IFPA]	GNV [IFPA]	CRG [IFPA]	TAY [IFPA]		
96.4	CRG [IFPA]	GNV [IFPA]	TAY [IFPA]			
111.0	CRG [IFPA]	GNV [IFPA]	TAY [IFPA]	CTY [IFPA]		
115.5	CRG [IFPA]	GNV [IFPA]	AYS [IFPA]	CTY [IFPA]	TAY [IFPA]	
127.8	GNV [IFPA]	TAY [IFPA]	CRG [IFPA]	AYS [IFPA]		

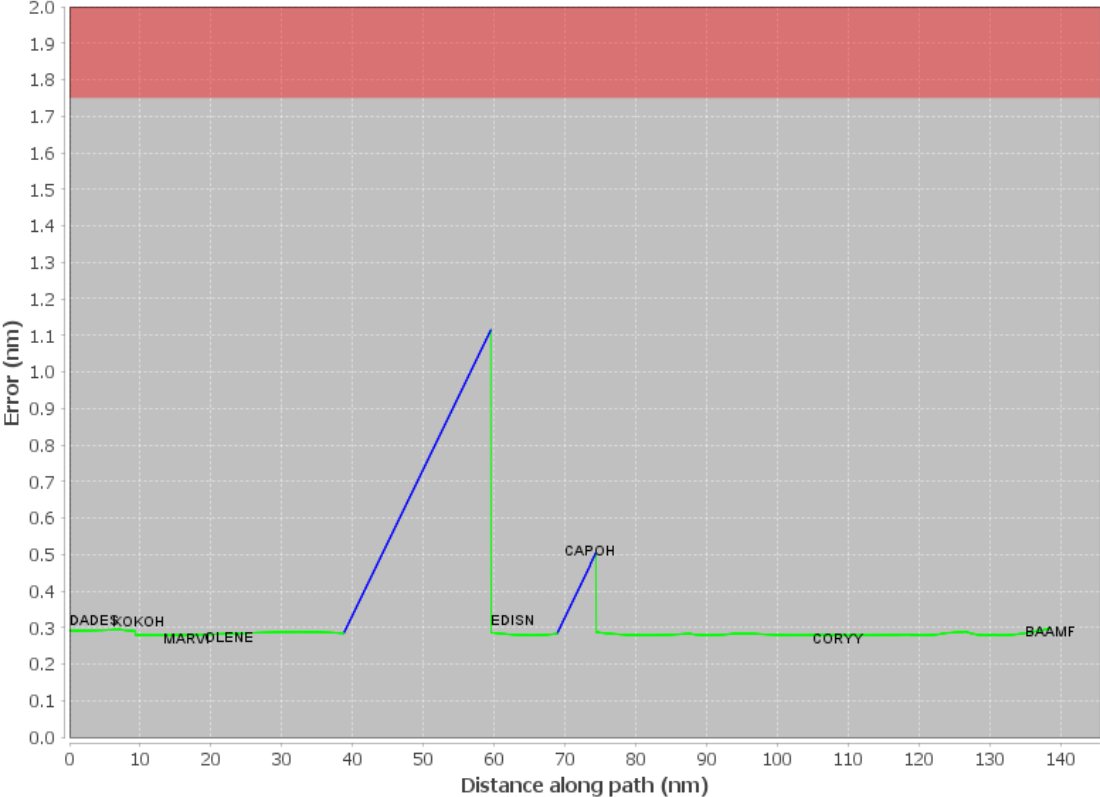
Inertial Drift Segments				
#	Start Location	End Location	Length [NM]	
1	N29° 00' 33.16", W082° 17' 23.69"	N29° 21' 15.33", W082° 19' 51.66"	20.763	
2	N29° 30' 36.61", W082° 20' 34.16"	N29° 36' 05.59", W082° 20' 52.33"	5.4879	

Available DMEs by Waypoints			
Waypoint Before	Waypoint After	DME List	Suggested DMEs
DADES	KOKOH	LAL [IFPA], SRQ [IFPA], PIE [IFPA], OCF [IFPA], ORL [IFPA]	
KOKOH	MARVI	LAL [IFPA], SRQ [IFPA], OCF [IFPA], ORL [IFPA]	
MARVI	OLENE	SRQ [IFPA], OCF [IFPA], ORL [IFPA]	
OLENE	EDISN	OMN [IFPA], GNV [IFPA], CTY [IFPA], OCF [IFPA], ORL [IFPA]	
EDISN	CAPOH	GNV [IFPA], CTY [IFPA], OCF [IFPA]	
CAPOH	CORYY	TAY [IFPA], CRG [IFPA], GNV [IFPA], CTY [IFPA], OCF [IFPA]	
CORYY	BAAMF	TAY [IFPA], CRG [IFPA], GNV [IFPA], CTY [IFPA], AYS [IFPA]	

DME DME Assessment Results for DADES2 path DADES_BAAMF

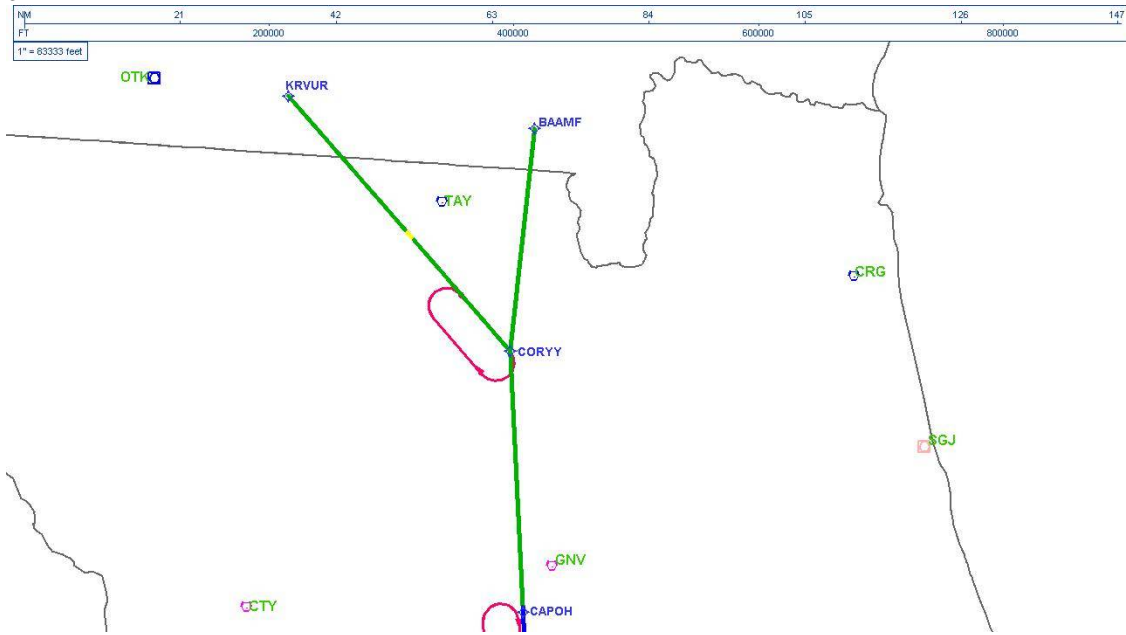
User Data Files								
#	File Name							
None								
User DMEs								
#	Name	Lat/Lon	MAGVAR	Range	Elevation [ft]	Frequency	Replaces	Status
1	ORL FAA 694096-44 ORL [IFPA]	N28° 32' 33.80", W081° 20' 06.05"	0.0 E	130	101.6	112.2	ORL FAA 694096-44	
ESV:		Bearing [True]: 250.0° to 300.0° Bearing [Mag]: 250.0° to 300.0°				Arc Distance: Out to 78.0 NM Altitude: 4000.0 to 14700.0 ft		
2	CTY FAA 704013-38 CTY [IFPA]	N29° 35' 56.40", W083° 02' 55.65"	2.0 W	40	33.8	112.0	CTY FAA 704013-38	
ESV:		Bearing [True]: 55.0° to 90.0° Bearing [Mag]: 57.0° to 92.0°				Arc Distance: Out to 60.0 NM Altitude: 4000.0 to 14500.0 ft		
3	CRG FAA 698166-35 CRG [IFPA]	N30° 20' 19.97", W081° 30' 35.74"	3.0 W	130	41.9	114.5	CRG FAA 698166-35	
ESV:		Bearing [True]: 237.0° to 300.0° Bearing [Mag]: 240.0° to 303.0°				Arc Distance: Out to 61.0 NM Altitude: 2900.0 to 14600.0 ft		
4	CTY FAA 704013-60 CTY [IFPA]	N29° 35' 56.40", W083° 02' 55.65"	2.0 W	40	33.8	112.0	CTY FAA 704013-60	
ESV:		Bearing [True]: 97.0° to 114.0° Bearing [Mag]: 99.0° to 116.0°				Arc Distance: Out to 55.0 NM Altitude: 2900.0 to 18100.0 ft		
5	OCF FAA 714002-35 OCF [IFPA]	N29° 10' 38.92", W082° 13' 34.80"	0.0 E	40	78.3	113.7	OCF FAA 714002-35	
ESV:		Bearing [True]: 70.0° to 180.0° Bearing [Mag]: 70.0° to 180.0°				Arc Distance: Out to 80.0 NM Altitude: 5000.0 to 18000.0 ft		
6	GNV FAA 704230-51 GNV [IFPA]	N29° 41' 31.61", W082° 16' 22.70"	4.0 W	40	127.5	116.2	GNV FAA 704230-51	
ESV:		Bearing [True]: 114.0° to 122.0° Bearing [Mag]: 118.0° to 126.0°				Arc Distance: Out to 70.0 NM Altitude: 4900.0 to 18200.0 ft		
7	OMN FAA 694106-20 OMN [IFPA]	N29° 18' 11.70", W081° 06' 45.71"	0.0 E	130	24	112.6	OMN FAA 694106-20	
ESV:		Bearing [True]: 190.0° to 255.0° Bearing [Mag]: 190.0° to 255.0°				Arc Distance: Out to 72.0 NM Altitude: 3000.0 to 14600.0 ft		
8	OMN FAA 694106-62 OMN [IFPA]	N29° 18' 11.70", W081° 06' 45.71"	0.0 E	130	24	112.6	OMN FAA 694106-62	
ESV:		Bearing [True]: 94.0° to 120.0° Bearing [Mag]: 94.0° to 120.0°				Arc Distance: Out to 85.0 NM Altitude: 9900.0 to 14600.0 ft		
9	CTY FAA 704013-58 CTY [IFPA]	N29° 35' 56.40", W083° 02' 55.65"	2.0 W	40	33.8	112.0	CTY FAA 704013-58	
ESV:		Bearing [True]: 6.0° to 47.0° Bearing [Mag]: 8.0° to 49.0°				Arc Distance: Out to 67.0 NM Altitude: 4900.0 to 18100.0 ft		
10	ORL FAA 694096-78 ORL [IFPA]	N28° 32' 33.80", W081° 20' 06.05"	0.0 E	130	101.6	112.2	ORL FAA 694096-78	
ESV:		Bearing [True]: 63.0° to 78.0° Bearing [Mag]: 63.0° to 78.0°				Arc Distance: Out to 99.0 NM Altitude: 8500.0 to 14700.0 ft		
11	LAL FAA 704224-41 LAL [IFPA]	N27° 59' 10.31", W082° 00' 50.06"	1.0 E	130	133.8	116.0	LAL FAA 704224-41	
ESV:		Bearing [True]: 360.0° to 77.0° Bearing [Mag]: 359.0° to 76.0°				Arc Distance: Out to 70.0 NM Altitude: 3000.0 to 14700.0 ft		
12	OMN FAA 694106-23 OMN [IFPA]	N29° 18' 11.70", W081° 06' 45.71"	0.0 E	130	24	112.6	OMN FAA 694106-23	
ESV:		Bearing [True]: 113.0° to 187.0° Bearing [Mag]: 113.0° to 187.0°				Arc Distance: Out to 70.0 NM Altitude: 4000.0 to 18000.0 ft		
13	TRV FAA 704266-83 TRV [IFPA]	N27° 40' 42.26", W080° 29' 23.04"	7.0 W	130	18.9	117.3	TRV FAA 704266-83	
ESV:		Bearing [True]: 351.0° to 33.0° Bearing [Mag]: 358.0° to 40.0°				Arc Distance: Out to 101.0 NM Altitude: 8500.0 to 18100.0 ft		
14	GNV FAA 704230-32 GNV [IFPA]	N29° 41' 31.61", W082° 16' 22.70"	4.0 W	40	127.5	116.2	GNV FAA 704230-32	
ESV:		Bearing [True]: 325.0° to 20.0° Bearing [Mag]: 329.0° to 24.0°				Arc Distance: Out to 75.0 NM Altitude: 4000.0 to 14500.0 ft		
15	OMN FAA 694106-65 OMN [IFPA]	N29° 18' 11.70", W081° 06' 45.71"	0.0 E	130	24	112.6	OMN FAA 694106-65	
ESV:		Bearing [True]: 269.0° to 284.0° Bearing [Mag]: 269.0° to 284.0°				Arc Distance: Out to 61.0 NM Altitude: 2900.0 to 14600.0 ft		
16	AYS FAA 698108-10 AYS [IFPA]	N31° 16' 09.93", W082° 33' 23.20"	0.0 E	40	154.8	110.2	AYS FAA 698108-10	
ESV:		Bearing [True]: 148.0° to 215.0° Bearing [Mag]: 148.0° to 215.0°				Arc Distance: Out to 61.0 NM Altitude: 2900.0 to 18200.0 ft		

DME Error



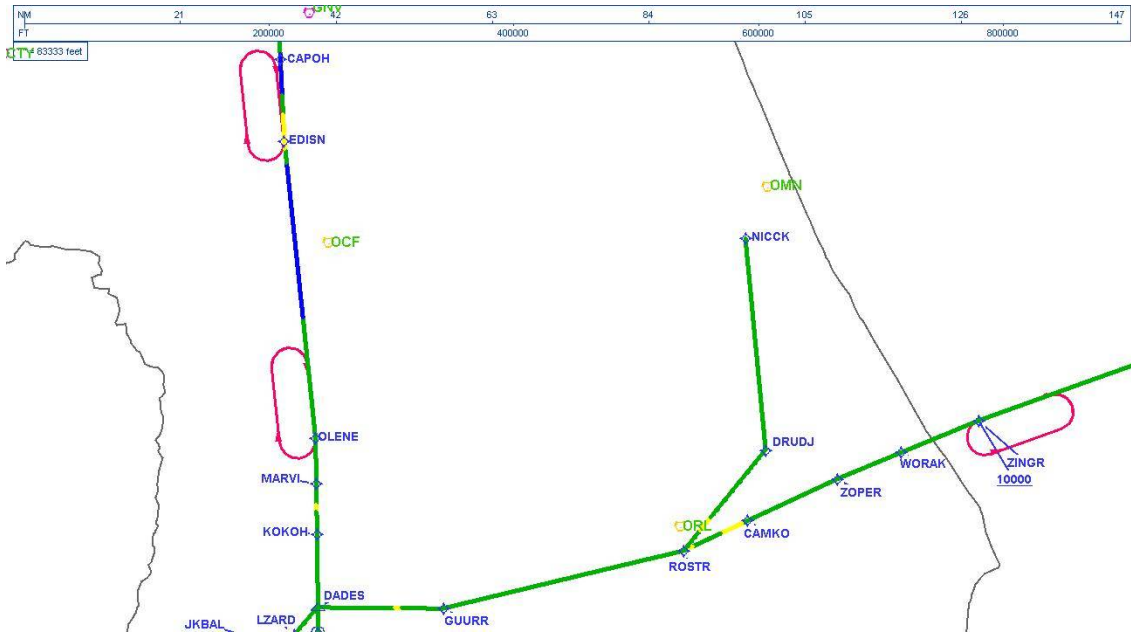
DME DME Assessment Results for DADES2 path DADES_BAAMF

Graphic Depiction 3



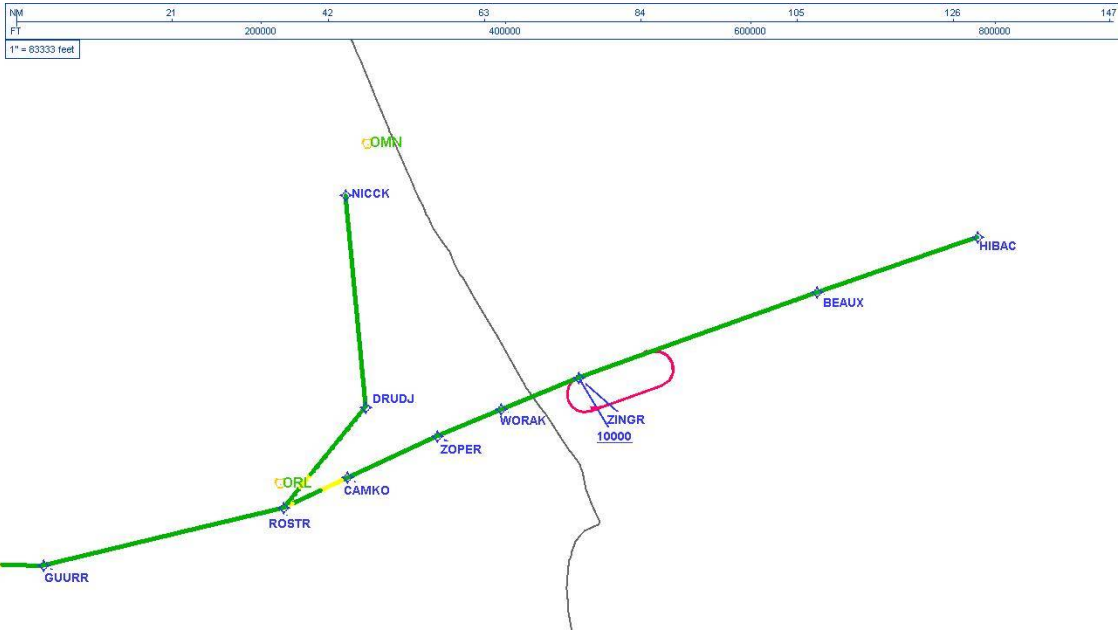
DME DME Assessment Results for DADES2 path DADES_BAAMF

Graphic Depiction 4



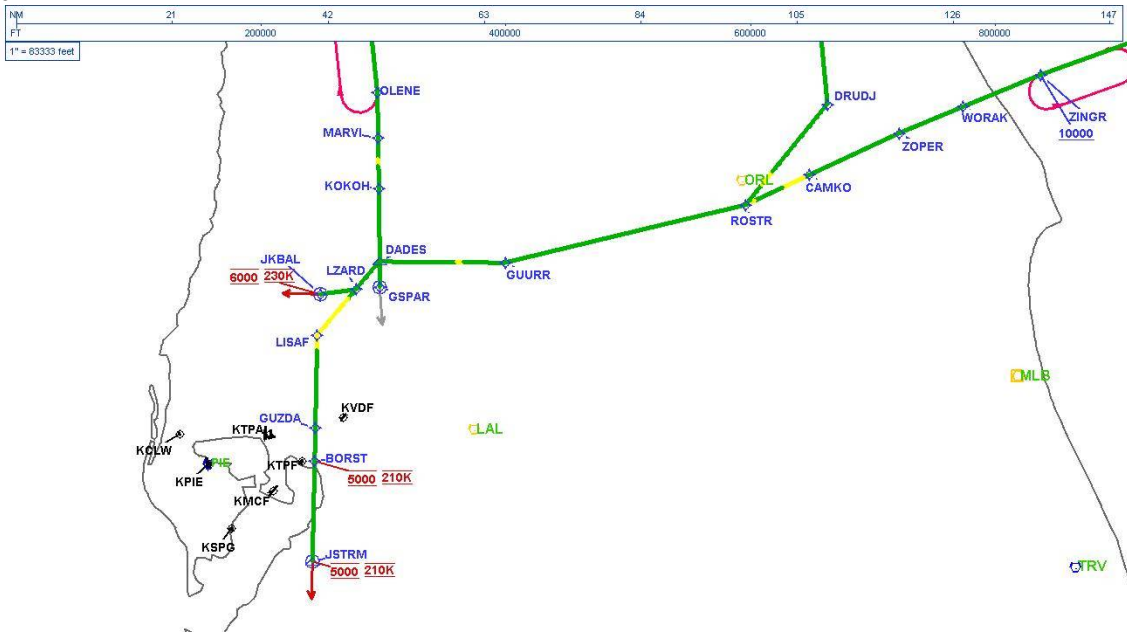
DME DME Assessment Results for DADES2 path DADES_BAAMF

Graphic Depiction 5



DME DME Assessment Results for DADES2 path DADES_BAAMF

Graphic Depiction 6



DME DME Assessment Results for DADES2 path DADES_NICCK

Results Summary	
Flyability:	Completed
DME/DME:	Completed - No Critical DMEs
Name:	Mark CTR Thompson
Project File:	C:\Users\Mark CTR Thompson\OneDrive - Federal Aviation Administration\Desktop\RNAV Projects\RNAV Projects 2025\TPA.SRQ STARS_250417\KTPA DADES2 (RNAV) STAR\DME\KTPA DADES2 (RNAV) STAR DME_240904.tgs
Output File:	C:\Users\Mark CTR Thompson\OneDrive - Federal Aviation Administration\Desktop\RNAV Projects\RNAV Projects 2025\TPA.SRQ STARS_250417\KTPA DADES2 (RNAV) STAR\DME\KTPA [IFPA] DADES2 20240904_0741 EDT\DADES_NICCK\KTPA DADES2 RNAV STAR DADES NICCK 20240904_0741 EDT.pdf
Procedure Name:	DADES2
Software: DmeDmePlugin:	7.3.3
Date/Time:	09/04/2024 07:41 EDT
Databases:	MITRE 3DEP 3 arcsec

Failures
No Failures

Warnings
No Warnings

Informational
No Informational

Notes For Flight Check
None

Flight Plan							
Name	Type	Lat/Lon	Altitude (ft)	VNAV Mode	Ground Speed (kts)	Turn Type	Leg Type
DADES	WP	N28° 21' 45.62", W082° 15' 07.80"	5000	VNAV	200	FLY_BY	TF
GUURR	WP	N28° 21' 36.42", W081° 56' 01.38"	5000	VNAV	200	FLY_BY	TF
ROSTR	WP	N28° 29' 20.92", W081° 19' 27.98"	5000	VNAV	200	FLY_BY	TF
DRUDJ	WP	N28° 42' 49.75", W081° 07' 05.77"	5000	VNAV	200	FLY_BY	TF
NICCK	WP	N29° 11' 16.48", W081° 10' 10.16"	5000	VNAV	200	FLY_BY	TF

Flyability	
Flight Type:	RNAV_STAR
Selected Airport:	KTPA [IFPA]
Climb Gradient:	None assigned
Speeds:	200 Ground Speed to 11000 FT
	240 Ground Speed to 18000 FT
	260 Ground Speed to 24000 FT
	340 Ground Speed above 24000 FT
Descent During a Turn:	Allowed
VNAV Mode:	Flight Plan

DME DME Assessment Results for DADES2 path DADES_NICCK

DME/DME	
RNP:	RNP 2
Flight Mode:	Manual
Line of Sight (DTED Level 0 Max):	Evaluated
Inertial Drift:	Enabled
Initial Drift:	0.558 NM
INS Drift Rate:	8.0 NM/Hour
Range Mode:	OSV
RNP Edges:	Evaluated
Min DME Range:	3.0 NM
DME Types:	DME, VOR-DME, VORTAC
DME Include Angles:	30 to 150
Critical DMEs:	Allowed
DoD Facilities:	Not included
Foreign Facilities:	Included
High DMEs:	Included
Low DMEs:	Included
Terminal DMEs:	Included
Flight Check DMEs:	Not selected
Higher Altitudes:	Not Evaluated
Near Maximum Altitude:	Not Evaluated
Automatic ESVs:	Not enabled
Disabled DMEs:	None

DME/DME (Continued)										
DMEs Used										
#	Name	Lat/Lon	MAGVAR	Range	Type	Source	Critical	Status	Time	Distance
1	LAL	N27° 59' 10.31", W082° 00' 50.06"	1.0 E	130	H	IFPA	NO	Enabled		
2	SRQ	N27° 24' 25.26", W082° 33' 49.18"	5.0 W	130	DH	IFPA	NO	Enabled		
3	OMN	N29° 18' 11.70", W081° 06' 45.71"	0.0 E	130	H	IFPA	NO	Enabled		
4	PIE	N27° 54' 27.95", W082° 41' 03.51"	5.0 W	130	H	IFPA	NO	Enabled		
5	GNV	N29° 41' 31.61", W082° 16' 22.70"	4.0 W	40	L	IFPA	NO	Enabled		
6	OCF	N29° 10' 38.92", W082° 13' 34.80"	0.0 E	40	L	IFPA	NO	Enabled		
7	MLB	N28° 06' 19.12", W080° 38' 06.46"	7.0 W	130	DH	IFPA	NO	Enabled		
8	ORL	N28° 32' 33.80", W081° 20' 06.05"	0.0 E	130	H	IFPA	NO	Enabled		

DME DME Assessment Results for DADES2 path DADES_NICCK

Flight Check DME Selection						
Distance [NM]	Selected DMEs					Alternate
0.0	ORL [IFPA]	LAL [IFPA]	PIE [IFPA]	SRQ [IFPA]		
1.4	ORL [IFPA]	OCF [IFPA]	LAL [IFPA]	PIE [IFPA]	SRQ [IFPA]	
2.1	ORL [IFPA]	LAL [IFPA]	OCF [IFPA]	SRQ [IFPA]		
8.3	LAL [IFPA]	SRQ [IFPA]	OCF [IFPA]			
9.3	OCF [IFPA]	SRQ [IFPA]				
10.3	LAL [IFPA]	ORL [IFPA]	MLB [IFPA]	SRQ [IFPA]		
11.2	MLB [IFPA]	SRQ [IFPA]	LAL [IFPA]	OCF [IFPA]		
11.4	LAL [IFPA]	ORL [IFPA]	MLB [IFPA]	SRQ [IFPA]		
24.1	OCF [IFPA]	ORL [IFPA]	LAL [IFPA]	MLB [IFPA]	OMN [IFPA]	SRQ [IFPA]
27.8	OCF [IFPA]	ORL [IFPA]	LAL [IFPA]	MLB [IFPA]	OMN [IFPA]	
47.3	OCF [IFPA]	LAL [IFPA]	OMN [IFPA]	MLB [IFPA]		
50.1	OCF [IFPA]	LAL [IFPA]	MLB [IFPA]			
53.4	OCF [IFPA]	LAL [IFPA]	MLB [IFPA]	OMN [IFPA]		
53.9	OMN [IFPA]	ORL [IFPA]	LAL [IFPA]	MLB [IFPA]	OCF [IFPA]	
55.3	LAL [IFPA]	MLB [IFPA]	OCF [IFPA]	ORL [IFPA]		
64.6	ORL [IFPA]	MLB [IFPA]	LAL [IFPA]	OCF [IFPA]	OMN [IFPA]	
71.3	OCF [IFPA]	ORL [IFPA]	MLB [IFPA]	OMN [IFPA]		
93.0	OCF [IFPA]	ORL [IFPA]	OMN [IFPA]	GNV [IFPA]	MLB [IFPA]	
94.6	GNV [IFPA]	OMN [IFPA]	OCF [IFPA]	MLB [IFPA]		

Inertial Drift Segments			
#	Start Location	End Location	Length [NM]

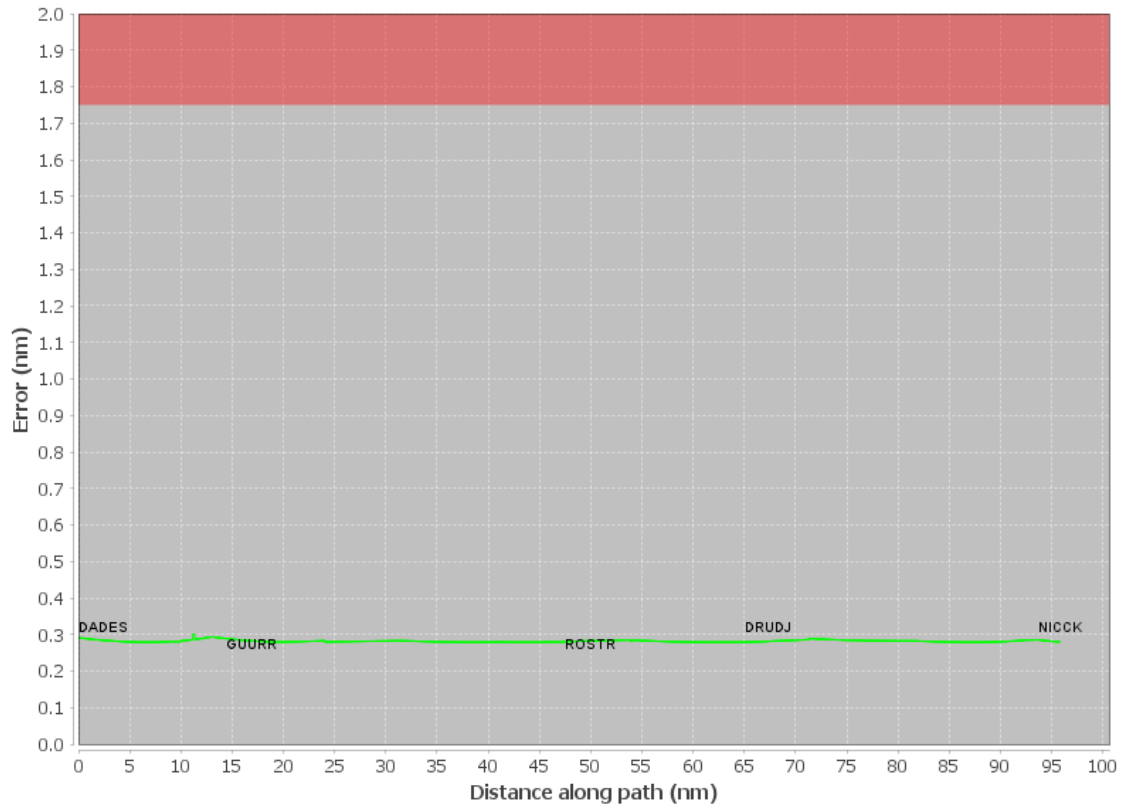
Available DMEs by Waypoints			
Waypoint Before	Waypoint After	DME List	Suggested DMEs
DADES	GUURR	LAL [IFPA], SRQ [IFPA], PIE [IFPA], OCF [IFPA], MLB [IFPA], ORL [IFPA]	
GUURR	ROSTR	LAL [IFPA], SRQ [IFPA], OMN [IFPA], OCF [IFPA], MLB [IFPA], ORL [IFPA]	
ROSTR	DRUDJ	LAL [IFPA], OMN [IFPA], OCF [IFPA], MLB [IFPA], ORL [IFPA]	
DRUDJ	NICCK	LAL [IFPA], OMN [IFPA], GNV [IFPA], OCF [IFPA], MLB [IFPA], ORL [IFPA]	

DME DME Assessment Results for DADES2 path DADES_NICCK

User Data Files								
#	File Name							
None								
User DMEs								
#	Name	Lat/Lon	MAGVAR	Range	Elevation [ft]	Frequency	Replaces	Status
1	ORL FAA 694096-44 ORL [IFPA]	N28° 32' 33.80", W081° 20' 06.05"	0.0 E	130	101.6	112.2	ORL FAA 694096-44	
ESV:		Bearing [True]: 250.0° to 300.0° Bearing [Mag]: 250.0° to 300.0°				Arc Distance: Out to 78.0 NM Altitude: 4000.0 to 14700.0 ft		
2	CTY FAA 704013-38 CTY [IFPA]	N29° 35' 56.40", W083° 02' 55.65"	2.0 W	40	33.8	112.0	CTY FAA 704013-38	
ESV:		Bearing [True]: 55.0° to 90.0° Bearing [Mag]: 57.0° to 92.0°				Arc Distance: Out to 60.0 NM Altitude: 4000.0 to 14500.0 ft		
3	CRG FAA 698166-35 CRG [IFPA]	N30° 20' 19.97", W081° 30' 35.74"	3.0 W	130	41.9	114.5	CRG FAA 698166-35	
ESV:		Bearing [True]: 237.0° to 300.0° Bearing [Mag]: 240.0° to 303.0°				Arc Distance: Out to 61.0 NM Altitude: 2900.0 to 14600.0 ft		
4	CTY FAA 704013-60 CTY [IFPA]	N29° 35' 56.40", W083° 02' 55.65"	2.0 W	40	33.8	112.0	CTY FAA 704013-60	
ESV:		Bearing [True]: 97.0° to 114.0° Bearing [Mag]: 99.0° to 116.0°				Arc Distance: Out to 55.0 NM Altitude: 2900.0 to 18100.0 ft		
5	OCF FAA 714002-35 OCF [IFPA]	N29° 10' 38.92", W082° 13' 34.80"	0.0 E	40	78.3	113.7	OCF FAA 714002-35	
ESV:		Bearing [True]: 70.0° to 180.0° Bearing [Mag]: 70.0° to 180.0°				Arc Distance: Out to 80.0 NM Altitude: 5000.0 to 18000.0 ft		
6	GNV FAA 704230-51 GNV [IFPA]	N29° 41' 31.61", W082° 16' 22.70"	4.0 W	40	127.5	116.2	GNV FAA 704230-51	
ESV:		Bearing [True]: 114.0° to 122.0° Bearing [Mag]: 118.0° to 126.0°				Arc Distance: Out to 70.0 NM Altitude: 4900.0 to 18200.0 ft		
7	OMN FAA 694106-20 OMN [IFPA]	N29° 18' 11.70", W081° 06' 45.71"	0.0 E	130	24	112.6	OMN FAA 694106-20	
ESV:		Bearing [True]: 190.0° to 255.0° Bearing [Mag]: 190.0° to 255.0°				Arc Distance: Out to 72.0 NM Altitude: 3000.0 to 14600.0 ft		
8	OMN FAA 694106-62 OMN [IFPA]	N29° 18' 11.70", W081° 06' 45.71"	0.0 E	130	24	112.6	OMN FAA 694106-62	
ESV:		Bearing [True]: 94.0° to 120.0° Bearing [Mag]: 94.0° to 120.0°				Arc Distance: Out to 85.0 NM Altitude: 9900.0 to 14600.0 ft		
9	CTY FAA 704013-58 CTY [IFPA]	N29° 35' 56.40", W083° 02' 55.65"	2.0 W	40	33.8	112.0	CTY FAA 704013-58	
ESV:		Bearing [True]: 6.0° to 47.0° Bearing [Mag]: 8.0° to 49.0°				Arc Distance: Out to 67.0 NM Altitude: 4900.0 to 18100.0 ft		
10	ORL FAA 694096-78 ORL [IFPA]	N28° 32' 33.80", W081° 20' 06.05"	0.0 E	130	101.6	112.2	ORL FAA 694096-78	
ESV:		Bearing [True]: 63.0° to 78.0° Bearing [Mag]: 63.0° to 78.0°				Arc Distance: Out to 99.0 NM Altitude: 8500.0 to 14700.0 ft		
11	LAL FAA 704224-41 LAL [IFPA]	N27° 59' 10.31", W082° 00' 50.06"	1.0 E	130	133.8	116.0	LAL FAA 704224-41	
ESV:		Bearing [True]: 360.0° to 77.0° Bearing [Mag]: 359.0° to 76.0°				Arc Distance: Out to 70.0 NM Altitude: 3000.0 to 14700.0 ft		
12	OMN FAA 694106-23 OMN [IFPA]	N29° 18' 11.70", W081° 06' 45.71"	0.0 E	130	24	112.6	OMN FAA 694106-23	
ESV:		Bearing [True]: 113.0° to 187.0° Bearing [Mag]: 113.0° to 187.0°				Arc Distance: Out to 70.0 NM Altitude: 4000.0 to 18000.0 ft		
13	TRV FAA 704266-83 TRV [IFPA]	N27° 40' 42.26", W080° 29' 23.04"	7.0 W	130	18.9	117.3	TRV FAA 704266-83	
ESV:		Bearing [True]: 351.0° to 33.0° Bearing [Mag]: 358.0° to 40.0°				Arc Distance: Out to 101.0 NM Altitude: 8500.0 to 18100.0 ft		
14	GNV FAA 704230-32 GNV [IFPA]	N29° 41' 31.61", W082° 16' 22.70"	4.0 W	40	127.5	116.2	GNV FAA 704230-32	
ESV:		Bearing [True]: 325.0° to 20.0° Bearing [Mag]: 329.0° to 24.0°				Arc Distance: Out to 75.0 NM Altitude: 4000.0 to 14500.0 ft		
15	OMN FAA 694106-65 OMN [IFPA]	N29° 18' 11.70", W081° 06' 45.71"	0.0 E	130	24	112.6	OMN FAA 694106-65	
ESV:		Bearing [True]: 269.0° to 284.0° Bearing [Mag]: 269.0° to 284.0°				Arc Distance: Out to 61.0 NM Altitude: 2900.0 to 14600.0 ft		
16	AYS FAA 698108-10 AYS [IFPA]	N31° 16' 09.93", W082° 33' 23.20"	0.0 E	40	154.8	110.2	AYS FAA 698108-10	
ESV:		Bearing [True]: 148.0° to 215.0° Bearing [Mag]: 148.0° to 215.0°				Arc Distance: Out to 61.0 NM Altitude: 2900.0 to 18200.0 ft		

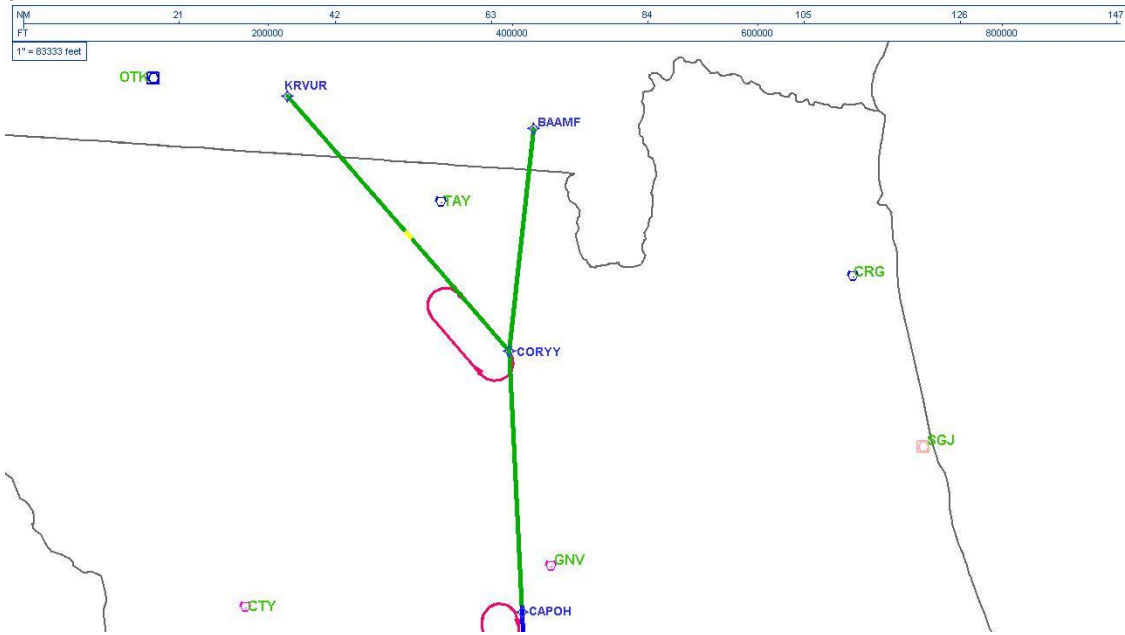
DME DME Assessment Results for DADES2 path DADES_NICCK

DME Error



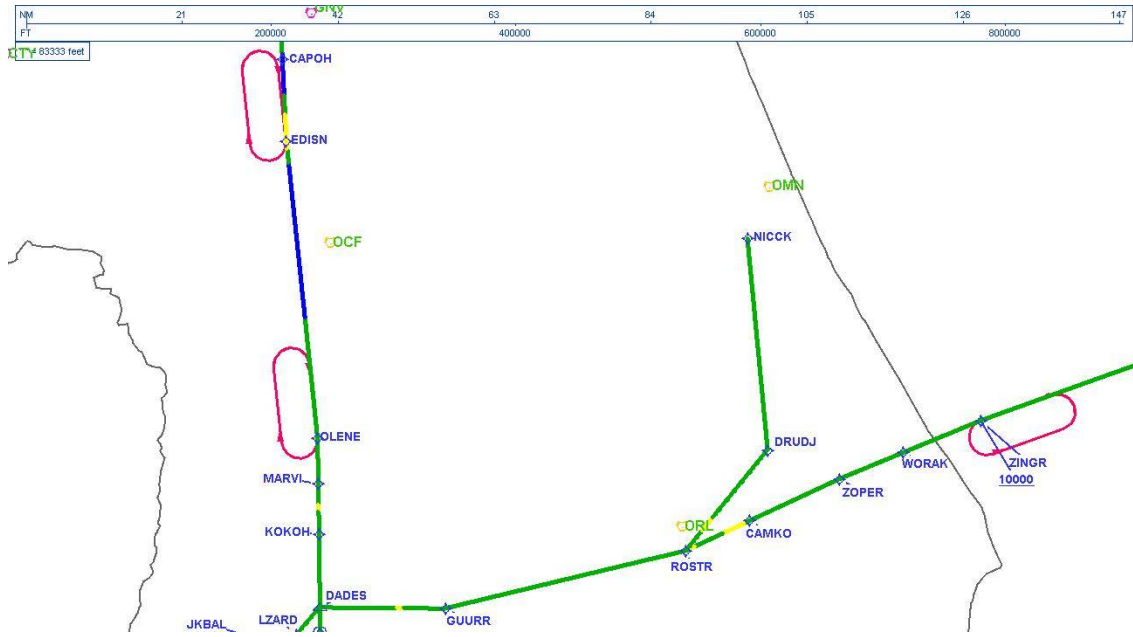
DME DME Assessment Results for DADES2 path DADES_NICCK

Graphic Depiction 3



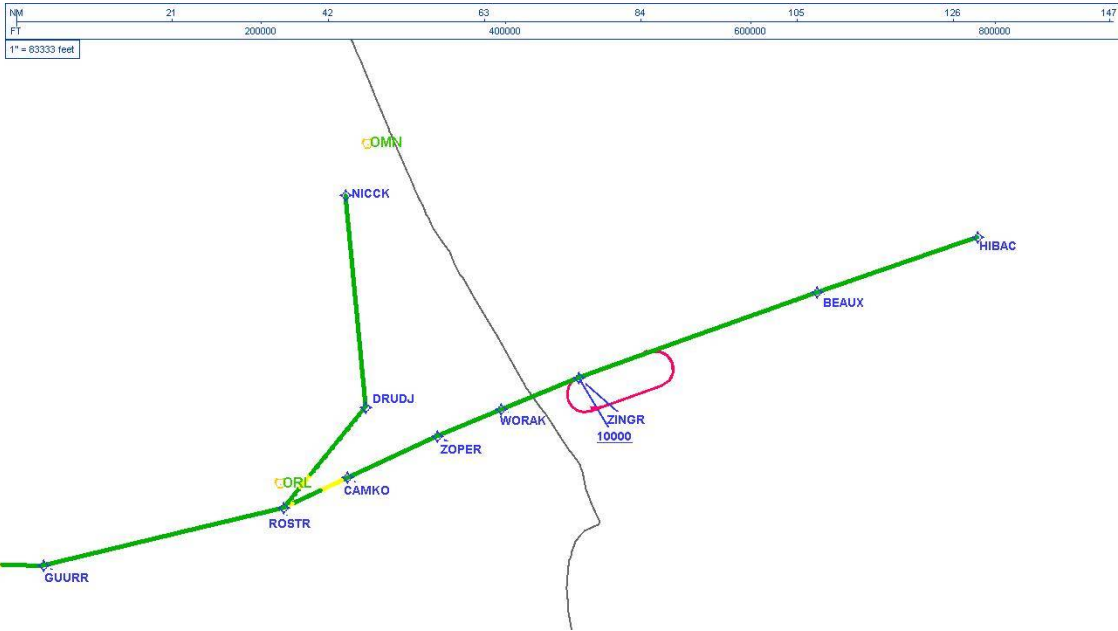
DME DME Assessment Results for DADES2 path DADES_NICCK

Graphic Depiction 4



DME DME Assessment Results for DADES2 path DADES_NICCK

Graphic Depiction 5



DME DME Assessment Results for DADES2 path DADES_NICCK

Graphic Depiction 6

