

PHOENIX DEP CON
120.7 239.0
FALCON TOWER ★
124.6

RNAV 1 - DME/DME/IRU or GPS required.
RADAR required.

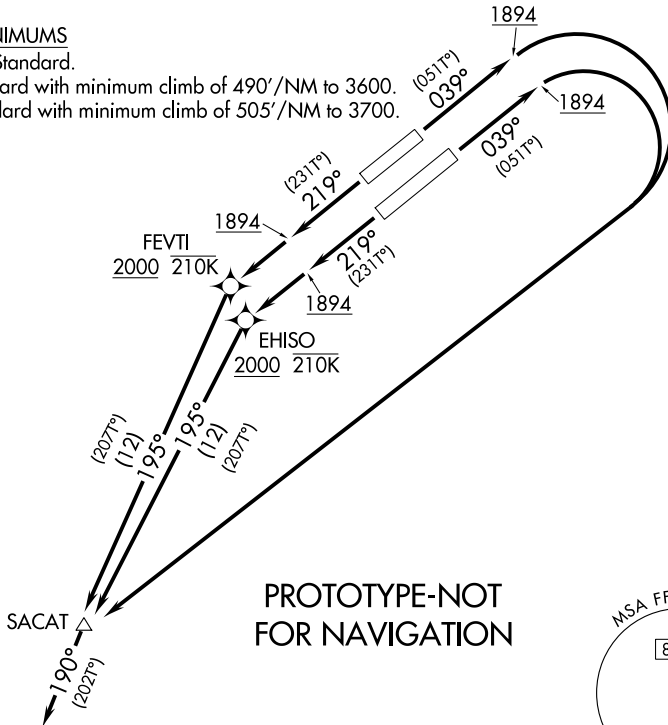
**TOP ALTITUDE:
ASSIGNED BY ATC**

TAKEOFF MINIMUMS

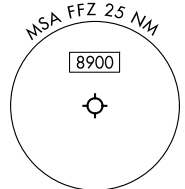
Rwys 22L/R: Standard.

Rwy 4L: Standard with minimum climb of 490'/NM to 3600.

Rwy 4R: Standard with minimum climb of 505'/NM to 3700.



PROTOTYPE-NOT
FOR NAVIGATION



NOTE: Chart not to scale.



DEPARTURE ROUTE DESCRIPTION

TAKEOFF RUNWAYS 4L/4R: Climb on heading 039° to 1894, then right turn direct SACAT, thence

TAKEOFF RUNWAY 22L: Climb on heading 219° to 1894, then direct EHISO at or above 2000 and at or below 210K, then on track 195° to SACAT, thence

TAKEOFF RUNWAY 22R: Climb on heading 219° to 1894, then direct FEVTI at or above 2000 and at or below 210K, then on track 195° to SACAT, thence

. . . . on track 190°, maintain ATC assigned altitude, expect filed altitude 10 minutes after departure.