

Flight Procedures Cover Page	Task Action: FLIGHT CHECK	Task Type: IAP	Estimated Chart Date: 03/19/2026	APWS Task ID: F8C92ECE1DCE40BD9EDF50CCC7F70E5E	APWS Project ID: 401C043F06B14BF2BFCD90A508F9E2B5
Procedure: ILS Z OR LOC Z RWY 1 AMDT 0B		Enroute: NO	Specialist: Burchell, Brandon		Agreement Number:
Airport ID: KUKF			Airport City: NORTH WILKESBORO		State: NC
Facility ID: BZM	Facility Type: VOR_DME	Flight Inspection Remark Type: New FC Slot			

Procedure Comments:
 Abbreviated Amendment.
 Clear NTM FDC 4/1690. LOC STEPDOWN New controlling obstacle. MDA/HAT increases 20ft.
 POC: KYLE THOMPSON, AJV A33, 405-954-2135.



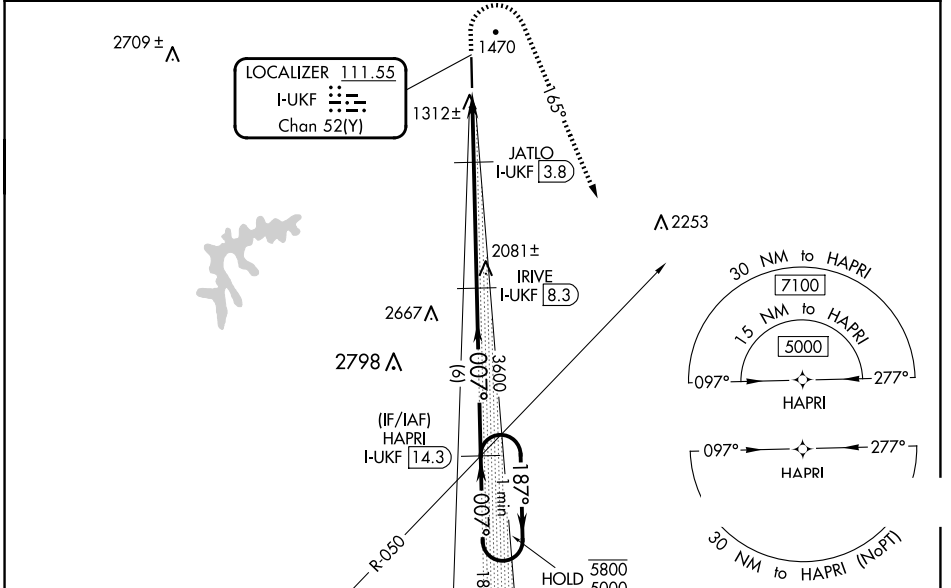
LOC/DME I-UKF 111.55 Chan 52 (Y)	APP CRS 007°	Rwy Idg 6201 TDZE 1276 Apt Elev 1303
---	------------------------	---

OLD

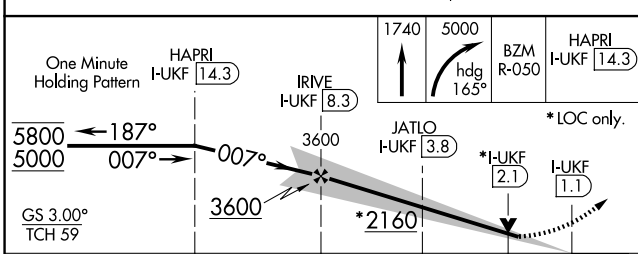
ILS Z or LOC Z RWY 1
WILKES COUNTY (UKF)

DME required. RNAV 1-GPS required.	MALSR 	MISSED APPROACH: Climb to 1740 then climbing right turn to 5000 heading 165° and BZM VOR/DME R-050 direct HAPRI/ I-UKF 14.3 DME and hold, continue climb-in-hold to 5000.
------------------------------------	-----------	---

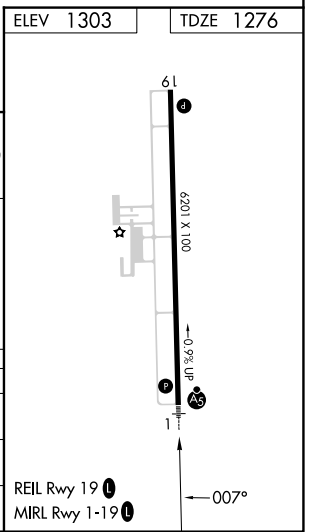
AWOS-3 126.625	ATLANTA CENTER 125.15 263.0	UNICOM 122.7 (CTAF)
--------------------------	---------------------------------------	-------------------------------



BARRETT'S MOUNTAIN 113.75 BZM Chan 84 (Y)	ELEV 1303	TDZE 1276
--	-----------	-----------



CATEGORY	A	B	C	D
S-ILS 1	1476-½		200 (200-½)	
S-LOC 1	1640-½	364 (400-½)	1640-5/8	364 (400-5/8)
CIRCLING	1800-1 497 (500-1)	1880-1 577 (600-1)	1880-1½ 577 (600-½)	2240-3 937 (1000-3)



SE-2, 04 SEP 2025 to 02 OCT 2025

P 2025 to 02 OCT 2025

SE-2, 1