

(KUSSO3,KUSSO) FIG  
KUSSO THREE DEPARTURE (RNAV)

LONE STAR DEP CON  
124.3 282.275  
ATIS  
133.4  
CLINC DEL  
119.55  
GND CON  
121.6  
ADDISON TOWER \*  
126.0 (CTAF) 239.0

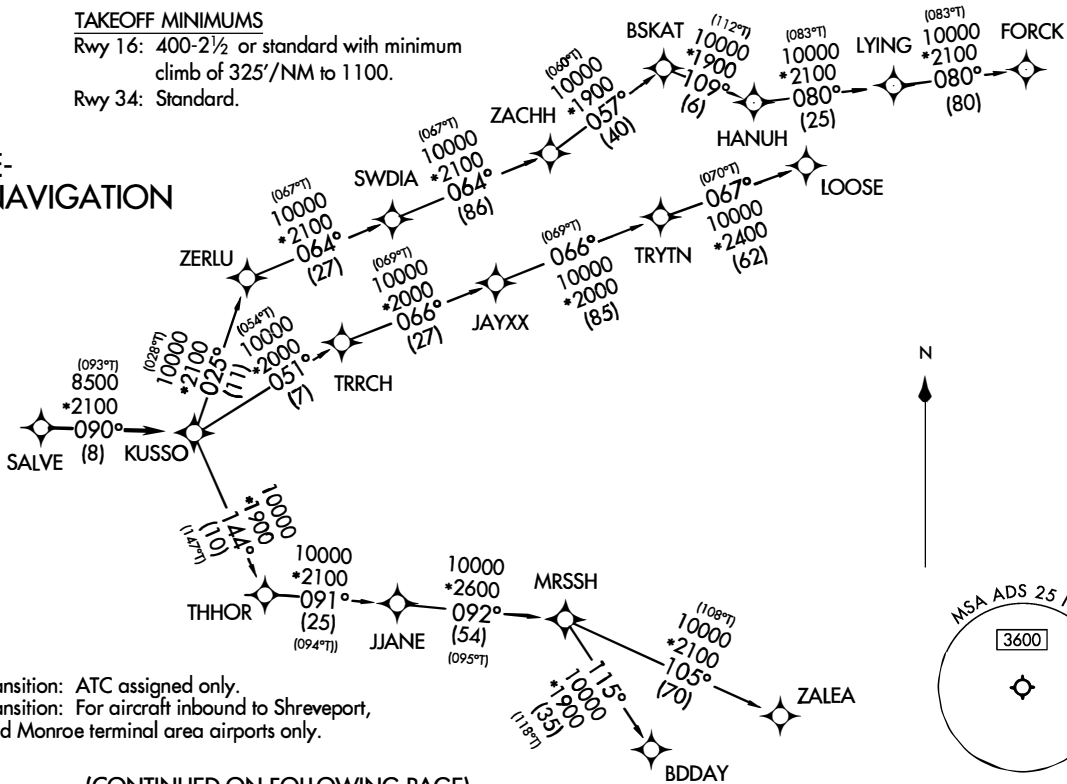
RNAV 1 - DME/DME/IRU or GPS required.  
RADAR required.

TOP ALTITUDE:  
ASSIGNED BY ATC

**TAKEOFF MINIMUMS**

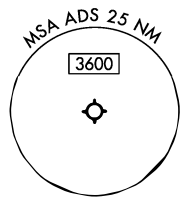
Rwy 16: 400-2½ or standard with minimum  
climb of 325'/NM to 1100.  
Rwy 34: Standard.

PROTOTYPE-  
NOT FOR NAVIGATION



NOTE: BDDAY Transition: ATC assigned only.  
NOTE: MRSSH Transition: For aircraft inbound to Shreveport,  
Jackson and Monroe terminal area airports only.

(CONTINUED ON FOLLOWING PAGE)



NOTE: Chart not to scale.

DALLAS, TEXAS  
ADDISON (ADS)

KUSSO3,KUSSO FIG  
KUSSO THREE DEPARTURE (RNAV)

AL-768 (FAA)

DALLAS, TEXAS  
ADDISON (ADS)



## DEPARTURE ROUTE DESCRIPTION

When entering controlled airspace, fly heading assigned by ATC, expect vector to SALVE, then on track 090° to KUSSO, then on assigned transition. Maintain ATC assigned altitude, expect filed altitude 10 minutes after departure.

BDDAY TRANSITION (KUSSO3.BDDAY)

BSKAT TRANSITION (KUSSO3.BSKAT)

LOOSE TRANSITION (KUSSO3.LOOSE)

MRSSH TRANSITION (KUSSO3.MRSSH)

ZALEA TRANSITION (KUSSO3.ZALEA)

PROTOTYPE-NOT FOR NAVIGATION