

Flight Procedures Cover Page	Task Action: FLIGHT CHECK	Task Type: IAP	Estimated Chart Date: 07/09/2026	APWS Task ID: FBDD98C424014DEDA841866DDE97405E	APWS Project ID: 7EE33B3BCBEF486496FCF325C601D7C2
Procedure: RNAV (GPS) RWY 25 AMDT 2		Enroute: NO	Specialist: Gonzales, Emmanuel		Agreement Number:
Airport ID: KMTH			Airport City: MARATHON		State: FL
Facility ID:	Facility Type:	Flight Inspection Remark Type: New FC Slot			

Procedure Comments:
PENDING DATA USED FOR AIRPORT AND RUNWAYS.

RUNWAY 7-25 SHIFTED 40' NORTH.

CONTACT: RAKE MCGRAW 405-954-8711.



WAAS CH 58312 W25A	APP CRS 251°	Rwy Ldg TDZE Apt Elev	5008 5 5
----------------------------------------	------------------------	-----------------------------	-------------------------------------



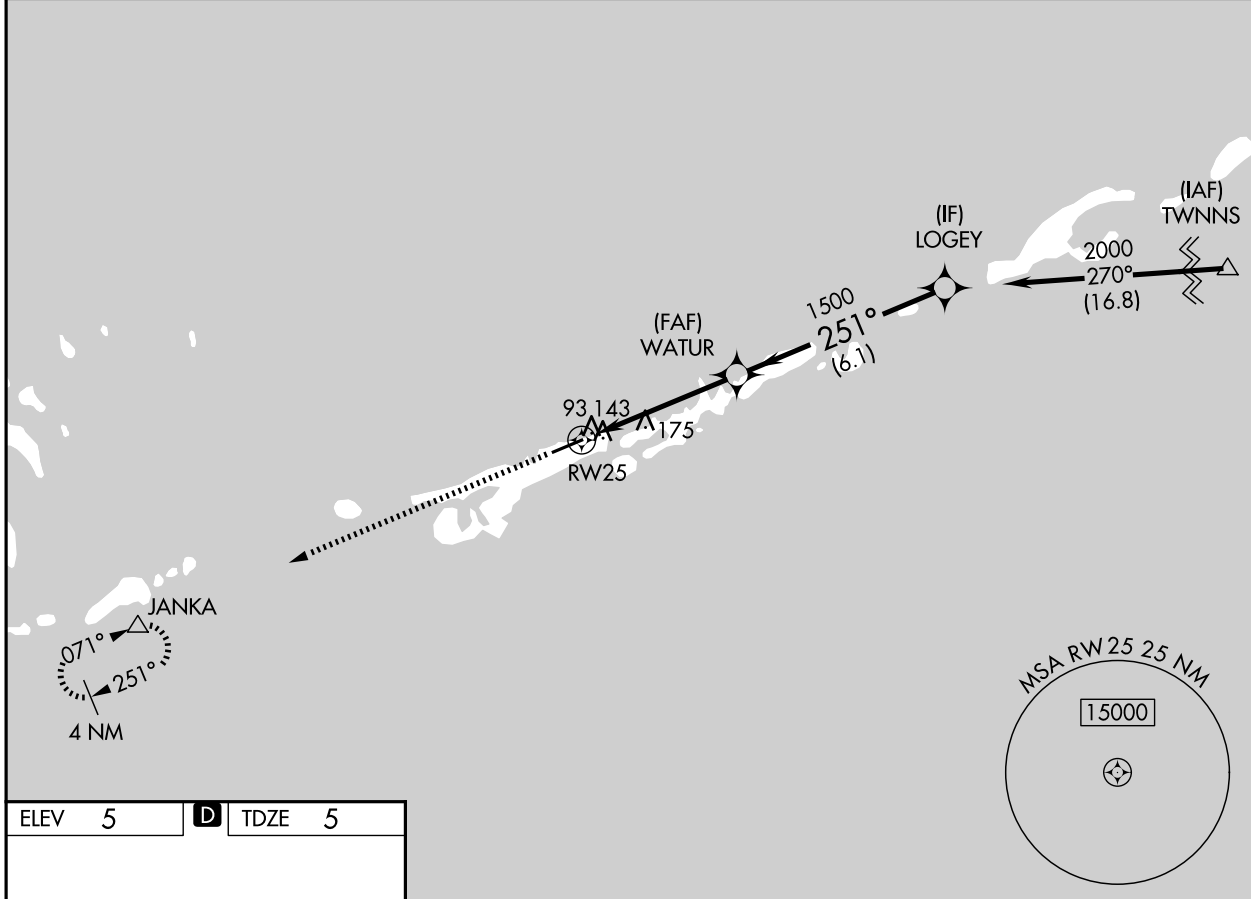
RNAV (GPS) RWY 25

THE FLORIDA KEYS MARATHON INTL (MTH)

⚠ DME/DME RNP-0.3 NA. Helicopter visibility reduction below 3/4 SM NA. When local altimeter setting not received, use Key West Intl altimeter setting: increase LPV DA to 408 feet, LNAV/VNAV DA to 497 feet and all MDAs 100 feet; increase LPV all Cats visibility 1/2 SM, increase LNAV/VNAV all Cats, LNAV Cat C/D, and Circling Cat C visibility 1/4 SM, and Circling Cat D visibility 1/2 SM. Baro-VNAV NA below -1.5°C (5°F) and above 48°C (118°F). Baro-VNAV NA when using Key West Intl altimeter setting.

MISSED APPROACH:
Climb to 3100 direct JANKA and hold.

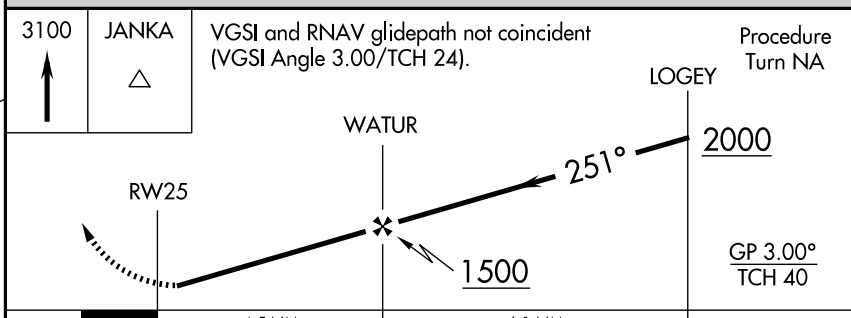
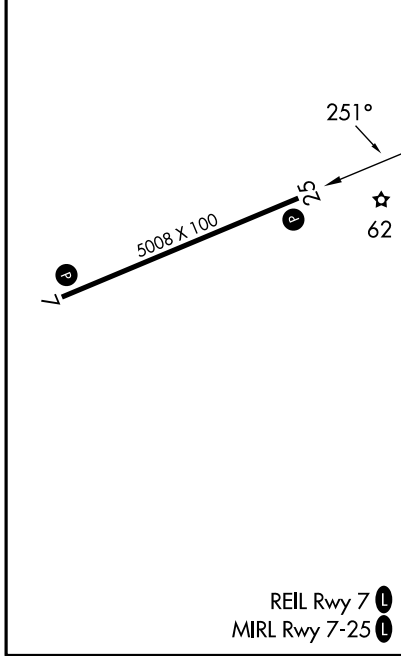
ASOS 135.525	MIAMI CENTER 133.5 306.9	UNICOM 122.975 (CTAF) 0
------------------------	------------------------------------	-----------------------------------



SE-3, 25 DEC 2025 to 22 JAN 2026

SE-3, 25 DEC 2025 to 22 JAN 2026

ELEV 5	D	TDZE 5
--------	----------	--------



3100	JANKA	VGSI and RNAV glidepath not coincident (VGSI Angle 3.00/TCH 24).			Procedure Turn NA
		RW25			LOGEY
		1500			2000
		4.5 NM			6.1 NM
CATEGORY		A	B	C	D
LPV DA		315-1 310 (400-1)			
LNAV/VNAV DA		404-1½ 399 (400-1½)			
LNAV MDA		440-1	435 (500-1)	440-1¼ 435 (500-1¼)	440-1½ 435 (500-1½)
CIRCLING		460-1 455 (500-1)	480-1 475 (500-1)	620-1¾ 615 (700-1¾)	660-2 655 (700-2)

REIL Rwy 7 0
MIRL Rwy 7-25 0