

FEDERAL AVIATION ADMINISTRATION
 FLIGHT STANDARDS SERVICE
 STANDARD TERMINAL ARRIVAL (STAR)

Bearings, headings, courses, tracks and radials are magnetic. Elevations and altitudes are in feet, MSL. Altitudes are minimum altitudes unless otherwise indicated. Ceilings are in feet above airport elevation. Distances are in nautical miles. Visibilities are in statute miles or feet RVR unless otherwise indicated.

Arrival Name TRSSH (RNAV)	Number TWO	STAR Computer Code TRSSH.TRSSH2	Superseded Number ONE	Dated 10/05/2023	Effective Date 14 MAY 2026
-------------------------------------	----------------------	---	---------------------------------	----------------------------	--------------------------------------

TRANSITION ROUTES:

Transition Name	Transition Computer Codes	From FIX/NAVAID	To FIX/NAVAID	Course	Distance	MEA	MOCA	MAA	Crossing Altitudes / Fixes
EATON	LBY.TRSSH2	LBY VORTAC	LBY VORTAC						
			TRSSH	222.95	67.21	5000	1900		AT 11000
MC COMB	MCB.TRSSH2	MCB VORTAC	MCB VORTAC						
			LGECY	177.36	24.99	5000	1900		
			MOLNR	177.39	12.00	5000	1700		
			TRSSH	177.39	06.42	5000	1600		AT 11000
MERDN	MERDN.TRSSH2	MERDN	MERDN						
			BLEUZ	220.63	55.01	5000	2700		
			LGECY	220.26	60.23	5000	2100		
			MOLNR	177.39	12.00	5000	1700		
			TRSSH	177.39	06.42	5000	1600		AT 11000
NTCHZ	NTCHZ.TRSSH2	NTCHZ	NTCHZ						
			LGECY	129.14	70.37	5000	1900		
			MOLNR	177.39	12.00	5000	1700		
			TRSSH	177.39	06.42	5000	1600		AT 11000

ARRIVAL ROUTE DESCRIPTION:

MSY: FROM TRSSH ON TRACK 177.36/10.00 TO KRNVL.

LANDING MSY RWY 2: FROM KRNVL ON TRACK 197.31/17.74 TO CROSS NDYMN AT 5000, THEN ON TRACK 197.27/7.95 TO CROSS MASSK AT 5000 AND AT 210 KIAS, THEN ON TRACK 196.48/2.50 TO CROSS BEEDS AT 5000 AND AT 210 KIAS, THEN ON TRACK 196.48. EXPECT RADAR VECTORS TO FINAL APPROACH COURSE.

LANDING MSY RWY 11: FROM KRNVL ON TRACK 217.27/19.00 TO CROSS ZULEW AT 4000, THEN ON TRACK 217.16/3.46 TO THROO, THEN ON TRACK 286.38/3.00 TO CROSS CCNUT AT 4000 AND AT 210 KIAS, THEN ON TRACK 286.38. EXPECT RADAR VECTORS TO FINAL APPROACH COURSE.

LANDING MSY RWY 20: FROM KRNVL ON TRACK 177.40/12.01 TO CROSS RAYOP AT OR ABOVE 4000. EXPECT LOC OR RNAV RWY 20 APPROACH.

LANDING MSY RWY 29: FROM KRNVL ON TRACK 177.73/22.21 TO CROSS TOWTH AT 4000 AND AT 210 KIAS, THEN ON TRACK 106.42/2.90 TO CROSS RREXX AT 4000 AND AT 210 KIAS, THEN ON TRACK 106.42. EXPECT RADAR VECTORS TO FINAL APPROACH COURSE.

LANDING NBG: FROM TRSSH ON TRACK 177.36/6.60 TO VEEEP, THEN ON TRACK 177.39/15.16 TO CROSS MUZES AT 5000, THEN ON TRACK 177.39. EXPECT RADAR VECTORS TO FINAL APPROACH COURSE.

LANDING NEW: FROM TRSSH ON TRACK 177.36/6.60 TO VEEEP, THEN ON TRACK 137.43/10.68 TO SEAFD, THEN ON TRACK 145.94/10.00 TO CROSS KRSNT AT 5000, THEN ON TRACK 180.36/8.04 TO CROSS GOCPP AT 3000, THEN ON TRACK 180.36. EXPECT RADAR VECTORS TO FINAL APPROACH COURSE.

PBN REQUIREMENT NOTES:

RNAV 1 - DME/DME/IRU OR GPS

EQUIPMENT REQUIREMENT NOTES:

RADAR REQUIRED



FEDERAL AVIATION ADMINISTRATION
 FLIGHT STANDARDS SERVICE
 STANDARD TERMINAL ARRIVAL (STAR)

Bearings, headings, courses, tracks and radials are magnetic. Elevations and altitudes are in feet, MSL. Altitudes are minimum altitudes unless otherwise indicated.
 Ceilings are in feet above airport elevation. Distances are in nautical miles. Visibilities are in statute miles or feet RVR unless otherwise indicated.

Arrival Name	Number	STAR Computer Code	Superseded Number	Dated	Effective Date
TRSSH (RNAV)	TWO	TRSSH.TRSSH2	ONE	10/05/2023	14 MAY 2026

PROCEDURAL DATA NOTES:

NOTE: LBY TRANSITION: FOR AIRCRAFT LANDING NEW ONLY.

FIXES AND/OR HOLDING PATTERNS:

- CHART HOLDING AT BLEUZ: HOLD NE, RT, 220.63 INBOUND, 12 NM LEGS.
- CHART HOLDING AT LGECY: HOLD N, RT, 177.39 INBOUND, 10 NM LEGS.
- CHART HOLDING AT MCB VORTAC: HOLD N, RT, 177.36 INBOUND, 12 NM LEGS.

COMMUNICATIONS:

AIRPORTS SERVED:

<u>AIRPORT ID</u>	<u>CITY</u>	<u>STATE</u>
MSY	NEW ORLEANS	LA
NEW	NEW ORLEANS	LA
NBG	NEW ORLEANS	LA

LOST COMMUNICATIONS PREFERENCES:

REMARKS:

1600 FT MOCA VALUES DUE TO 548 MSL TWR (22-002266, 4D) AND 522 MSL TWR (22-003045, 2C) LOCATED DOWNSTREAM IN RWY TRANSITIONS.

ADDITIONAL FLIGHT DATA:

- DME/DME ASSESSMENT: SAT (RNP 2.0)
- MAG VAR: MSY 01W/2020
- CHART AT RAYOP TERMINUS: MSY LDG RWY 20
- CHART AT RREXX TERMINUS: MSY LDG RWY 29
- CHART AT CCNUT TERMINUS: MSY LDG RWY 11
- CHART AT BEEDS TERMINUS: MSY LDG RWY 2
- CHART AT GOCPP TERMINUS: LDG NEW
- CHART AT MUZES TERMINUS: LDG NBG



FEDERAL AVIATION ADMINISTRATION
 FLIGHT STANDARDS SERVICE
 STANDARD TERMINAL ARRIVAL (STAR)

Bearings, headings, courses, tracks and radials are magnetic. Elevations and altitudes are in feet, MSL. Altitudes are minimum altitudes unless otherwise indicated.
 Ceilings are in feet above airport elevation. Distances are in nautical miles. Visibilities are in statute miles or feet RVR unless otherwise indicated.

Arrival Name	Number	STAR Computer Code	Superseded Number	Dated	Effective Date
TRSSH (RNAV)	TWO	TRSSH.TRSSH2	ONE	10/05/2023	14 MAY 2026

FLIGHT INSPECTED BY:

KENNETH E JACK

ORGANIZATION: DATE:

AJF 03/10/2026

Flight Inspected Signature:

Digitally signed by

CASIMIR L TABAKA

Mar 12, 2026

DEVELOPED BY:

jAY D. BAGGETT

AJV-A33 11/11/2025

Developed By Signature:

Digitally signed by

CASIMIR L TABAKA

Dec 23, 2025

APPROVED BY:

KYLE THOMPSON

AJV-A33

Approved By Signature:

Digitally signed by

CASIMIR L TABAKA

Dec 23, 2025

CHANGES:

1. MOCA AT TRSSH UPDATED FROM 1500 TO 1600.
2. MSY COMMON ROUTE NOW ENDS AT KRNVL.
3. NEW COMMON ROUTE ADDED THAT ENDS AT GOCPP.
4. NBG COMMON ROUTE ADDED THAT ENDS AT MUZES.
5. RUNWAY TRANSITIONS ADDED FOR ALL KMSY RUNWAYS.

REASONS:

1. OBST EVAL.
- 2-5. ATC REQUEST.

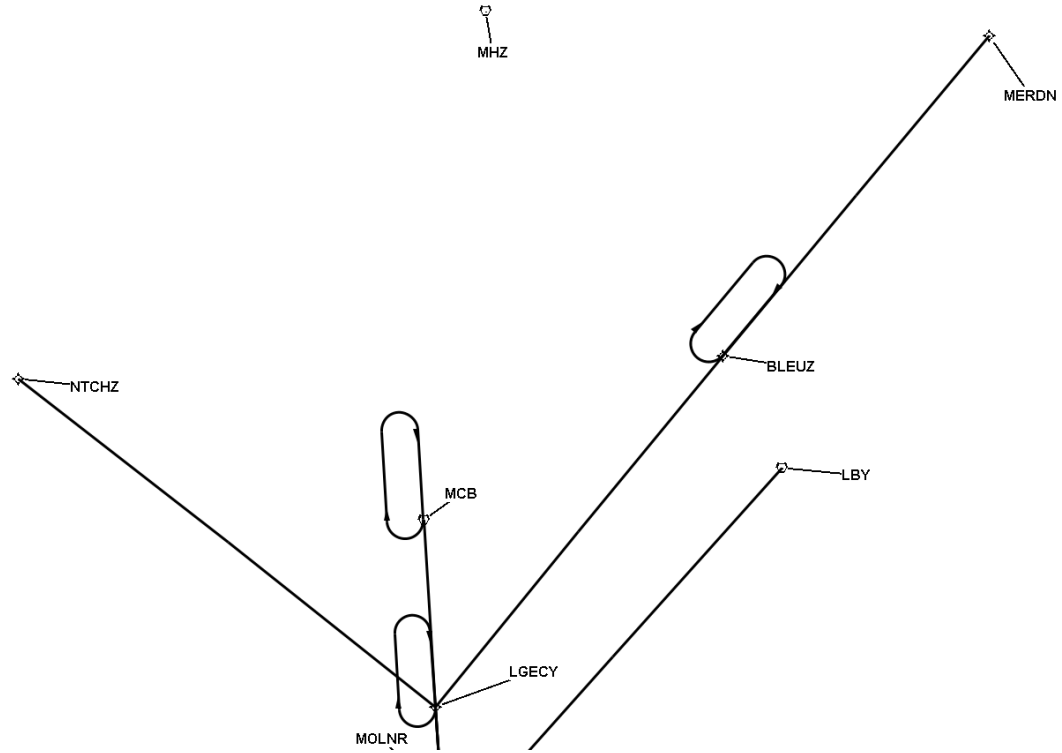


FEDERAL AVIATION ADMINISTRATION
 FLIGHT STANDARDS SERVICE
 STANDARD TERMINAL ARRIVAL (STAR)

Bearings, headings, courses, tracks and radials are magnetic. Elevations and altitudes are in feet, MSL. Altitudes are minimum altitudes unless otherwise indicated.
 Ceilings are in feet above airport elevation. Distances are in nautical miles. Visibilities are in statute miles or feet RVR unless otherwise indicated.

Arrival Name	Number	STAR Computer Code	Superseded Number	Dated	Effective Date
TRSSH (RNAV)	TWO	TRSSH.TRSSH2	ONE	10/05/2023	14 MAY 2026

Graphic Depiction 1

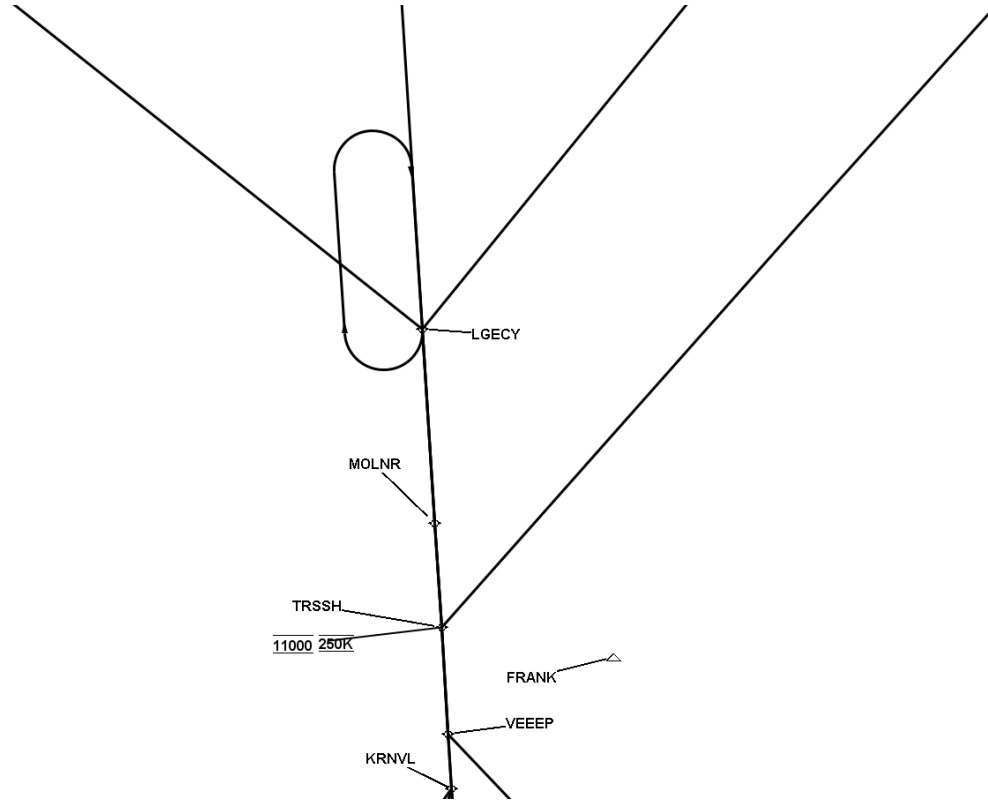


FEDERAL AVIATION ADMINISTRATION
 FLIGHT STANDARDS SERVICE
 STANDARD TERMINAL ARRIVAL (STAR)

Bearings, headings, courses, tracks and radials are magnetic. Elevations and altitudes are in feet, MSL. Altitudes are minimum altitudes unless otherwise indicated.
 Ceilings are in feet above airport elevation. Distances are in nautical miles. Visibilities are in statute miles or feet RVR unless otherwise indicated.

Arrival Name	Number	STAR Computer Code	Superseded Number	Dated	Effective Date
TRSSH (RNAV)	TWO	TRSSH.TRSSH2	ONE	10/05/2023	14 MAY 2026

Graphic Depiction 2

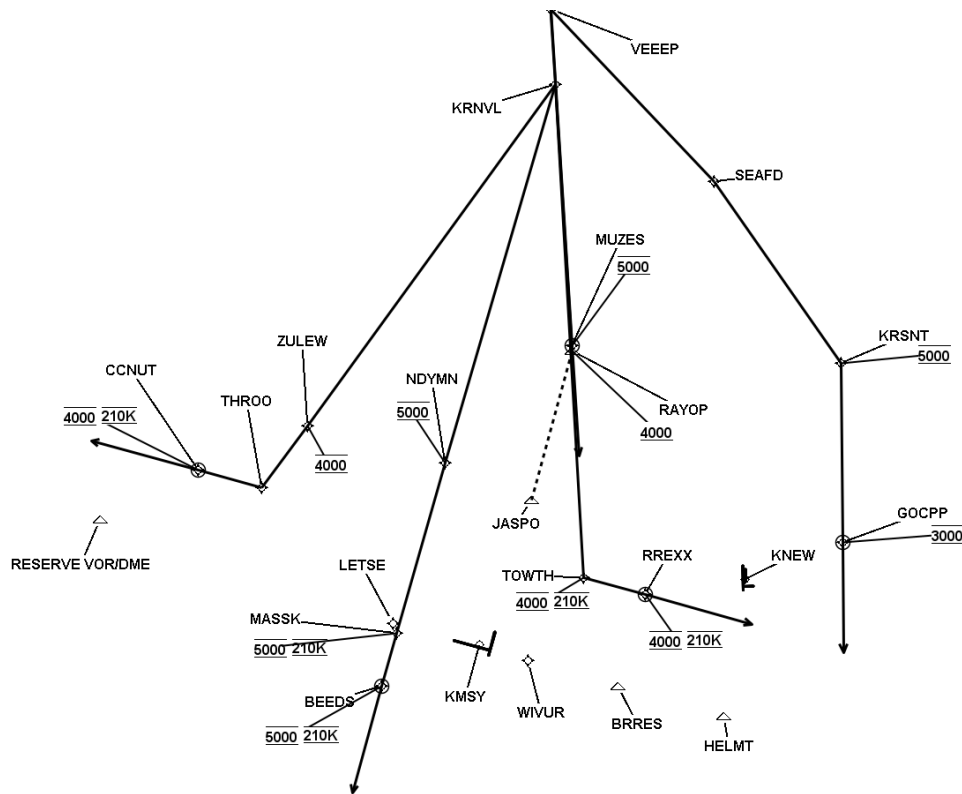


FEDERAL AVIATION ADMINISTRATION
FLIGHT STANDARDS SERVICE
STANDARD TERMINAL ARRIVAL (STAR)

Bearings, headings, courses, tracks and radials are magnetic. Elevations and altitudes are in feet, MSL. Altitudes are minimum altitudes unless otherwise indicated.
Ceilings are in feet above airport elevation. Distances are in nautical miles. Visibilities are in statute miles or feet RVR unless otherwise indicated.

Arrival Name	Number	STAR Computer Code	Superseded Number	Dated	Effective Date
TRSSH (RNAV)	TWO	TRSSH.TRSSH2	ONE	10/05/2023	14 MAY 2026

Graphic Depiction 3



FEDERAL AVIATION ADMINISTRATION
 FLIGHT STANDARDS SERVICE
 STAR (DATA RECORD)

Arrival Name TRSSH (RNAV)	Number TWO	STAR Computer Code TRSSH.TRSSH2		Superseded Number ONE		Dated 10/05/2023	Effective Date 14 MAY 2026		
<u>FIX/NAVAID</u>	<u>LAT/LONG</u>	<u>C</u>	<u>FO/FB</u>	<u>LEG TYPE</u>	<u>TC</u>	<u>DIST (NM)</u>	<u>ALTITUDE</u>	<u>SPEED</u>	<u>REMARKS</u>
En Route Transition									
LBY VORTAC	312507.26N / 0892015.37W	Y		IF					LBY.TRSSH2
TRSSH	303450.64N / 0901218.16W	Y	FB	TF	221.95	67.21	AT 11000	AT 250K	
En Route Transition									
MCB VORTAC	311816.03N / 0901529.53W	Y		IF					MCB.TRSSH2
LGECY	305316.27N / 0901338.90W	Y	FB	TF	176.36	24.99			
MOLNR	304116.08N / 0901246.28W	Y	FB	TF	176.39	12.00			
TRSSH	303450.64N / 0901218.16W	Y	FB	TF	176.39	06.42	AT 11000	AT 250K	
En Route Transition									
MERDN	322242.36N / 0884814.66W	Y		IF					MERDN.TRSSH2
BLEUZ	314008.34N / 0892921.08W	Y	FB	TF	219.63	55.01			
LGECY	305316.27N / 0901338.90W	Y	FB	TF	219.26	60.23			
MOLNR	304116.08N / 0901246.28W	Y	FB	TF	176.39	12.00			
TRSSH	303450.64N / 0901218.16W	Y	FB	TF	176.39	06.42	AT 11000	AT 250K	
En Route Transition									
NTCHZ	313705.81N / 0911758.18W	Y		IF					NTCHZ.TRSSH2
LGECY	305316.27N / 0901338.90W	Y	FB	TF	128.14	70.37			
MOLNR	304116.08N / 0901246.28W	Y	FB	TF	176.39	12.00			
TRSSH	303450.64N / 0901218.16W	Y	FB	TF	176.39	06.42	AT 11000	AT 250K	
Common Route									
TRSSH	303450.64N / 0901218.16W	Y		IF			AT 11000	AT 250K	TRSSH.TRSSH2
KRNVL	302450.45N / 0901134.14W	Y	FB	TF	176.36	10.00			
Common Route									
TRSSH	303450.64N / 0901218.16W	Y		IF			AT 11000	AT 250K	TRSSH.TRSSH2
VEEEP	302814.62N / 0901149.10W	Y	FB	TF	176.36	06.60			



FEDERAL AVIATION ADMINISTRATION
FLIGHT STANDARDS SERVICE
STAR (DATA RECORD)

Arrival Name TRSSH (RNAV)	Number TWO	STAR Computer Code TRSSH.TRSSH2		Superseded Number ONE		Dated 10/05/2023	Effective Date 14 MAY 2026		
FIX/NAVAID	LAT/LONG	C	FO/FB	LEG TYPE	TC	DIST (NM)	ALTIITUDE	SPEED	REMARKS
MUZES	301304.48N / 0901043.00W	Y	FO	TF	176.39	15.16	AT 5000		
KNBG				FM	176.39				
Common Route									
TRSSH	303450.64N / 0901218.16W	Y		IF			AT 11000	AT 250K	TRSSH.TRSSH2
VEEEP	302814.62N / 0901149.10W	Y	FB	TF	176.36	06.60			
SEAFD	302029.15N / 0900318.86W	Y	FB	TF	136.43	10.68			
KRSNT	301216.66N / 0895641.16W	Y	FB	TF	144.94	10.00	AT 5000		
GOCP	300412.99N / 0895634.95W	Y	FO	TF	179.36	08.04	AT 3000		
KNEW				FM	179.36				
Runway Transition									
KRNVL	302450.45N / 0901134.14W	Y		IF					
NDYMN	300746.35N / 0901718.93W	Y	FB	TF	196.31	17.74	AT 5000		
MASSK	300007.29N / 0901952.82W	Y	FB	TF	196.27	07.95	AT 5000	AT 210K	
BEEDS	295742.37N / 0902038.90W	Y	FO	TF	195.48	02.50	AT 5000	AT 210K	
KMSY:RWY 2				FM	195.48				
Runway Transition									
KRNVL	302450.45N / 0901134.14W	Y		IF					
ZULEW	300928.48N / 0902432.03W	Y	FB	TF	216.27	19.00	AT 4000		
THROO	300640.52N / 0902653.19W	Y	FB	TF	216.16	03.46			
CCNUT	300728.32N / 0903013.32W	Y	FO	TF	285.38	03.00	AT 4000	AT 210K	
KMSY:RWY 11				FM	285.38				
Runway Transition									
KRNVL	302450.45N / 0901134.14W	Y		IF					
RAYOP	301249.47N / 0901041.91W	Y	FB	TF	176.40	12.01	AT/ABOVE 4000		
KMSY:RWY 20									



FEDERAL AVIATION ADMINISTRATION
 FLIGHT STANDARDS SERVICE
 STAR (DATA RECORD)

Arrival Name TRSSH (RNAV)	Number TWO	STAR Computer Code TRSSH.TRSSH2		Superseded Number ONE	Dated 10/05/2023	Effective Date 14 MAY 2026			
<u>FIX/NAVAID</u>	<u>LAT/LONG</u>	<u>C</u>	<u>FO/FB</u>	<u>LEG TYPE</u>	<u>TC</u>	<u>DIST (NM)</u>	<u>ALTITUDE</u>	<u>SPEED</u>	<u>REMARKS</u>
Runway Transition									
KRNVL	302450.45N / 0901134.14W	Y		IF					
TOWTH	300236.98N / 0901006.53W	Y	FB	TF	176.73	22.21	AT 4000	AT 210K	
RREXX	300150.58N / 0900653.29W	Y	FO	TF	105.42	02.90	AT 4000	AT 210K	
KMSY:RWY 29				FM	105.42				

