

FEDERAL AVIATION ADMINISTRATION  
 FLIGHT STANDARDS SERVICE  
 STANDARD TERMINAL ARRIVAL (STAR)

Bearings, headings, courses, tracks and radials are magnetic. Elevations and altitudes are in feet, MSL. Altitudes are minimum altitudes unless otherwise indicated.  
 Ceilings are in feet above airport elevation. Distances are in nautical miles. Visibilities are in statute miles or feet RVR unless otherwise indicated.

Arrival Name <b>OLAHS (RNAV)</b>	Number <b>THREE</b>	STAR Computer Code <b>OLAHS.OLAHS3</b>	Superseded Number <b>TWO</b>	Dated <b>05/19/2022</b>	Effective Date <b>3 Nov 2022</b>
-------------------------------------	------------------------	---	---------------------------------	----------------------------	-------------------------------------

TRANSITION ROUTES:

Transition Name	Transition Computer Codes	From FIX/NAVAID	To FIX/NAVAID	Course	Distance	MEA	MOCA	MAA	Crossing Altitudes / Fixes
BORDO	BORDO.OLAHS3	BORDO	BORDO						
			IRRIS	006.32	24.88	FL200	1300		
			WEBAB	006.11	27.35	FL200	1300	BETWEEN FL240 AND FL260	
			UZHER	005.75	32.07	FL200	1300	AT/ABOVE FL240	
			CIPOD	298.97	18.00	FL180	1300	AT/ABOVE FL190	
			SOCKI	298.84	16.10	14000	1300	AT/ABOVE 14000	
			CIREX	298.54	15.25	10000	1300	AT/ABOVE 10000	
			OLAHS	298.09	17.68	5000	1300		
JEKER	JEKER.OLAHS3	JEKER	JEKER						AT/ABOVE 14000
			DOPLY	289.22	13.35	9500	1300	AT/ABOVE 10000	
			OLAHS	292.34	17.62	5000	1300		
			PEACH						
PEACH	PEACH.OLAHS3	PEACH	PEACH						
			SOFAR	289.62	26.53	FL180	1300		
			HEYDR	289.57	11.19	FL180	1300		
			FANUP	289.48	17.72	FL180	1300	AT/ABOVE FL190	
			JEKER	289.34	15.64	9500	1300	AT/ABOVE 14000	
			DOPLY	289.22	13.35	9500	1300	AT/ABOVE 10000	
			OLAHS	292.34	17.62	5000	1300		
			WEBAB						
WEBAB	WEBAB.OLAHS3	WEBAB	WEBAB						BETWEEN FL240 AND FL260
			UZHER	005.75	32.07	FL200	1300	AT/ABOVE FL240	
			CIPOD	298.97	18.00	FL180	1300	AT/ABOVE FL190	
			SOCKI	298.84	16.10	14000	1300	AT/ABOVE 14000	
			CIREX	298.54	15.25	10000	1300	AT/ABOVE 10000	
			OLAHS	298.09	17.68	5000	1300		
NASSAU	ZQA.OLAHS3	ZQA VOR/DME	ZQA VOR/DME						
			RAJAY	298.40	43.50	FL200	1300		
			UZHER	299.82	16.15	FL200	1300	AT/ABOVE FL240	

FEDERAL AVIATION ADMINISTRATION  
 FLIGHT STANDARDS SERVICE  
 STANDARD TERMINAL ARRIVAL (STAR)

Bearings, headings, courses, tracks and radials are magnetic. Elevations and altitudes are in feet, MSL. Altitudes are minimum altitudes unless otherwise indicated. Ceilings are in feet above airport elevation. Distances are in nautical miles. Visibilities are in statute miles or feet RVR unless otherwise indicated.

Arrival Name	Number	STAR Computer Code	Superseded Number	Dated	Effective Date				
OLAHS (RNAV)	THREE	OLAHS.OLAHS3	TWO	05/19/2022	3 Nov 2022				
Transition Name	Transition Computer Codes	From FIX/NAVAID	To FIX/NAVAID	Course	Distance	MEA	MOCA	MAA	Crossing Altitudes / Fixes
			CIPOD	298.97	18.00	FL180	1300		AT/ABOVE FL190
			SOCKI	298.84	16.10	14000	1300		AT/ABOVE 14000
			CIREX	298.54	15.25	10000	1300		AT/ABOVE 10000
			OLAHS	298.09	17.68	5000	1300		

**ARRIVAL ROUTE DESCRIPTION:**

LANDING KFLR RWY 10L/R: FROM OLAHS ON TRACK 298.66/2.65 TO CROSS LATNN AT 6000 AND AT 250 KIAS, THEN ON TRACK 301.44/5.28 TO WAVUN, THEN ON TRACK 301.26/13.13 TO KEVEY, THEN ON TRACK 317.90/14.57 TO CROSS BEPAC AT 6000, THEN ON TRACK 276.32/10.41 TO CROSS WANAR AT 5000, THEN ON TRACK 276.32. EXPECT RADAR VECTORS TO FINAL APPROACH COURSE.

LANDING KFLR RWY 28L/R: FROM OLAHS ON TRACK 298.34/2.01 TO CROSS FISHB AT 5000 AND AT 250 KIAS, THEN ON TRACK 337.27/12.68 TO CROSS CRNVL AT 5000.

LANDING KFEX/KPMP: FROM OLAHS ON TRACK 298.34/2.01 TO CROSS FISHB AT 5000 AND AT 250 KIAS, THEN ON TRACK 356.42/19.51 TO CROSS LORDS AT 5000, THEN ON HEADING 320.00. EXPECT RADAR VECTORS TO FINAL APPROACH COURSE.

LANDING KOPF: FROM OLAHS ON TRACK 298.34/2.01 TO CROSS FISHB AT 5000 AND AT 250 KIAS, THEN ON TRACK 301.29/19.05 TO JEPSI, THEN ON TRACK 277.52/28.18 TO CROSS FRRDY AT 5000, THEN ON HEADING 276.00. EXPECT RADAR VECTORS TO FINAL APPROACH COURSE.

**PBN REQUIREMENT NOTES:**

- RNAV 1 - DME/DME/IRU OR GPS
- BORDO TRANSITION: RNAV 1 - GPS
- PEACH TRANSITION: RNAV 1 - GPS
- NASSAU TRANSITION: RNAV 1 - GPS

**EQUIPMENT REQUIREMENT NOTES:**

RADAR REQUIRED

**PROCEDURAL DATA NOTES:**

- NOTE: JET AIRCRAFT ONLY.
- NOTE: MIAMI CENTER will issue landing runway assignment for aircraft landing KFLR.
- NOTE: DO NOT FILE WEBAB, JEKER TRANSITION - TO BE ASSIGNED BY ATC.

**FIXES AND/OR HOLDING PATTERNS:**

- CHART HOLDING AT JEKER: HOLD E, LT, 289.34 INBOUND, 10 NM LEGS.
- CHART HOLDING AT OLAHS: HOLD SE, LT, 298.09 INBOUND, 10 NM LEGS.
- CHART HOLDING AT SOCKI: HOLD SE, RT, 298.84 INBOUND, 10 NM LEGS.
- CHART HOLDING AT SOFAR: HOLD E, RT, 289.62 INBOUND, 10 NM LEGS.
- CHART HOLDING AT UZHER: HOLD SE, RT, 298.43 INBOUND, 10 NM LEGS.
- CHART HOLDING AT WEBAB: HOLD S, RT, 006.11 INBOUND, 10 NM LEGS.
- CHART HOLDING AT ZQA VOR/DME: HOLD SE, RT, 298.46 INBOUND, 10 NM LEGS.
- CHART: WAROR.

**COMMUNICATIONS:**

CHART: MIAMI APP CON



FEDERAL AVIATION ADMINISTRATION  
 FLIGHT STANDARDS SERVICE  
 STANDARD TERMINAL ARRIVAL (STAR)

Bearings, headings, courses, tracks and radials are magnetic. Elevations and altitudes are in feet, MSL. Altitudes are minimum altitudes unless otherwise indicated. Ceilings are in feet above airport elevation. Distances are in nautical miles. Visibilities are in statute miles or feet RVR unless otherwise indicated.

Arrival Name <b>OLAHS (RNAV)</b>	Number <b>THREE</b>	STAR Computer Code <b>OLAHS.OLAHS3</b>	Superseded Number <b>TWO</b>	Dated <b>05/19/2022</b>	Effective Date <b>3 Nov 2022</b>
-------------------------------------	------------------------	---	---------------------------------	----------------------------	-------------------------------------

**AIRPORTS SERVED:**

<u>AIRPORT ID</u>	<u>CITY</u>	<u>STATE</u>
KFLL	FORT LAUDERDALE	FL
KFXE	FORT LAUDERDALE	FL
KOPF	MIAMI	FL
KPMP	POMPANO BEACH	FL

**LOST COMMUNICATIONS PREFERENCES:**

**REMARKS:**

THE ENVIRONMENTAL REVIEW UNDER ORDER 1050.1 (LATEST EDITION) AND THE NOISE SCREENING HAVE BEEN ACCOMPLISHED. ABBREVIATED AMENDMENT.

**ADDITIONAL FLIGHT DATA:**

DME/DME ASSESSMENT: SAT (RNP 2.0)  
 REFERENCE MAGNETIC VARIATION = KFLL 06W/2015  
 CHART AT WANAR TERMINUS: LDG KFLL RWY 10L/R  
 CHART AT CRNVL TERMINUS: LDG KFLL RWY 28L/R  
 CHART AT LORDS TERMINUS: LDG KFXE/KPMP  
 CHART AT FRRDY TERMINUS: LDG KOPF

**FLIGHT INSPECTED BY:**

PROCESSED IAW TECHNICAL SUPPORT GROUP (AJF-17) MEMO DATED 07/07/2021, SUBJECT: GUIDANCE FOR PROCEDURAL CHANGES REQUIRING FLIGHT INSPECTION/VALIDATION.

**ORGANIZATION: DATE:**

DESIGN IMPLEMENTATION  
 MANAGER 05/11/2022

Flight Inspected Signature:

*Digitally signed by*

**ALLAN WILL**

Aug 02, 2022

**DEVELOPED BY:**

VICKI TURNER

Developed By Signature:

*Digitally signed by*

**ALLAN WILL**

Aug 02, 2022

**APPROVED BY:**

MARLON ROBINSON

AJV-A420

Approved By Signature:

*Digitally signed by*

**ALLAN WILL**

Aug 02, 2022

**CHANGES:**

1. DELETED: "OR AS ASSIGNED BY ATC" FROM ARRIVAL ROUTE DESCRIPTION FOR AIRCRAFT LANDING KFXE, KPMP, and KOPF.
2. DELETED NOTE: WEBAB, JEKER TRANSITIONS, ATC ASSIGNED ONLY.
3. ADDED NOTE: DO NOT FILE WEBAB, JEKER TRANSITION - TO BE ASSIGNED BY ATC.
4. REMOVED REMARK: MEAs At or ABOVE FL180 for COMM and DME/DME/IRU SOLUTION.
5. ADDED CHART: WAROR.



FEDERAL AVIATION ADMINISTRATION  
 FLIGHT STANDARDS SERVICE  
 STANDARD TERMINAL ARRIVAL (STAR)

Bearings, headings, courses, tracks and radials are magnetic. Elevations and altitudes are in feet, MSL. Altitudes are minimum altitudes unless otherwise indicated.  
 Ceilings are in feet above airport elevation. Distances are in nautical miles. Visibilities are in statute miles or feet RVR unless otherwise indicated.

Arrival Name	Number	STAR Computer Code	Superseded Number	Dated	Effective Date
<b>OLAHS (RNAV)</b>	<b>THREE</b>	<b>OLAHS.OLAHS3</b>	<b>TWO</b>	<b>05/19/2022</b>	<b>3 Nov 2022</b>

**REASONS:**

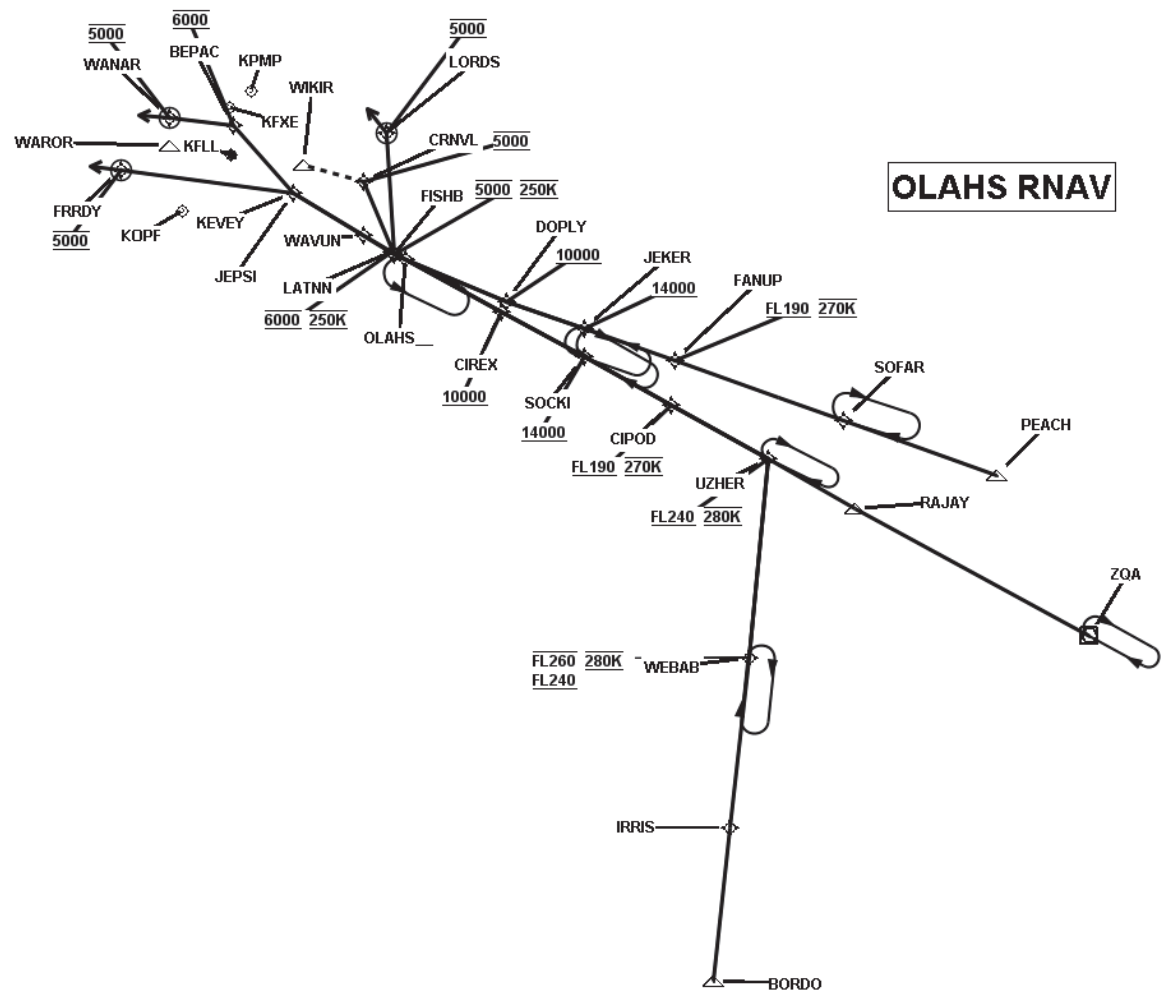
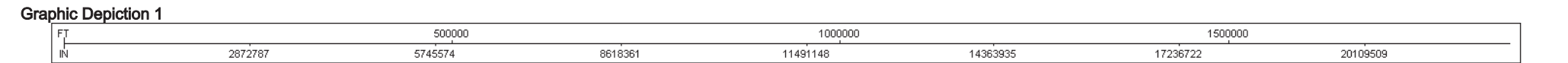
- 1-3. IAW 8260.19I NOTE STANDARDIZATION.
- 4. NOT REQUIRED.
- 5. ATC REQUEST.



FEDERAL AVIATION ADMINISTRATION  
FLIGHT STANDARDS SERVICE  
STANDARD TERMINAL ARRIVAL (STAR)

Bearings, headings, courses, tracks and radials are magnetic. Elevations and altitudes are in feet, MSL. Altitudes are minimum altitudes unless otherwise indicated.  
Ceilings are in feet above airport elevation. Distances are in nautical miles. Visibilities are in statute miles or feet RVR unless otherwise indicated.

Arrival Name	Number	STAR Computer Code	Superseded Number	Dated	Effective Date
<b>OLAHS (RNAV)</b>	<b>THREE</b>	<b>OLAHS.OLAHS3</b>	<b>TWO</b>	<b>05/19/2022</b>	<b>3 Nov 2022</b>

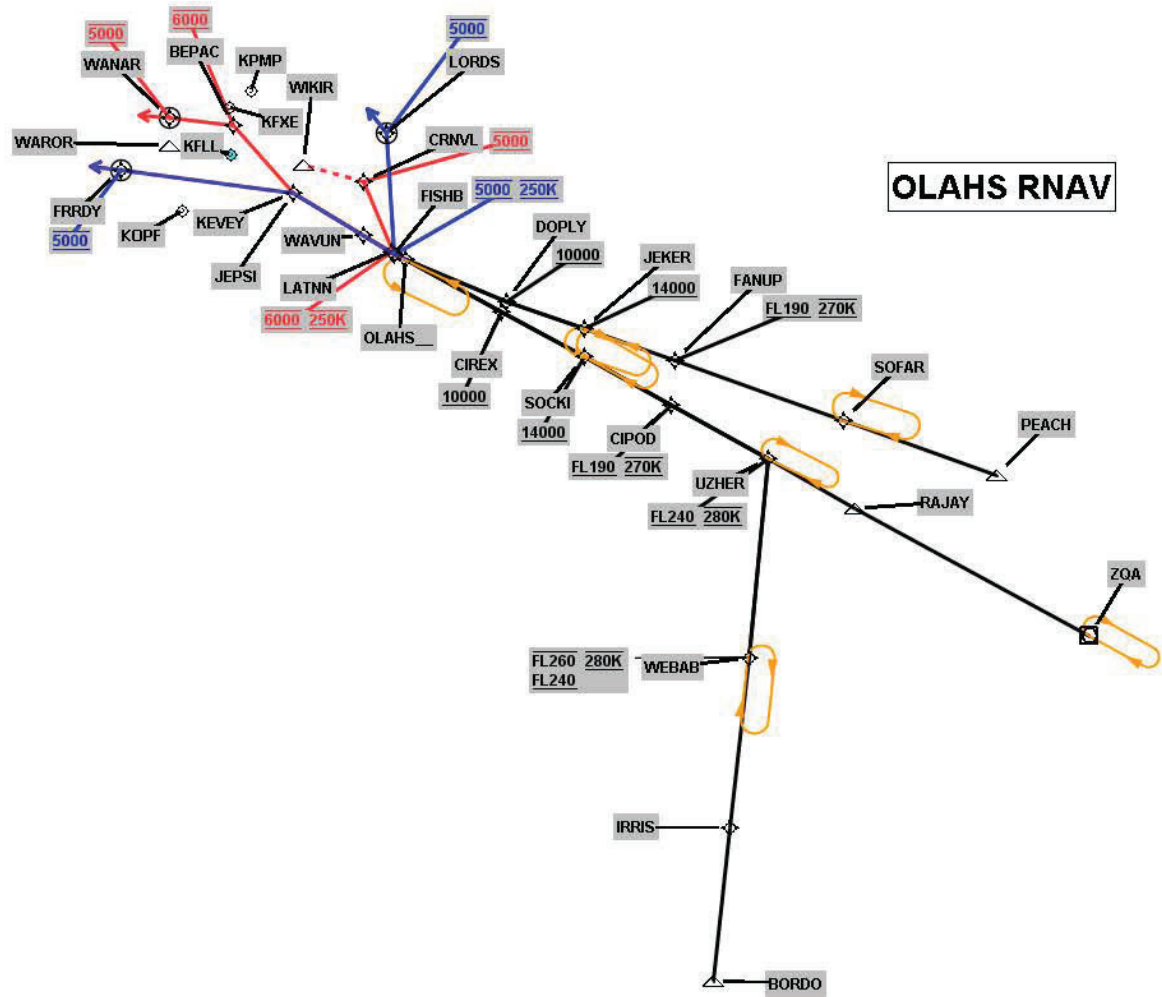


FEDERAL AVIATION ADMINISTRATION  
FLIGHT STANDARDS SERVICE  
STANDARD TERMINAL ARRIVAL (STAR)

Bearings, headings, courses, tracks and radials are magnetic. Elevations and altitudes are in feet, MSL. Altitudes are minimum altitudes unless otherwise indicated.  
Ceilings are in feet above airport elevation. Distances are in nautical miles. Visibilities are in statute miles or feet RVR unless otherwise indicated.

Arrival Name	Number	STAR Computer Code	Superseded Number	Dated	Effective Date
OLAHS (RNAV)	THREE	OLAHS.OLAHS3	TWO	05/19/2022	3 Nov 2022

Graphic Depiction 2

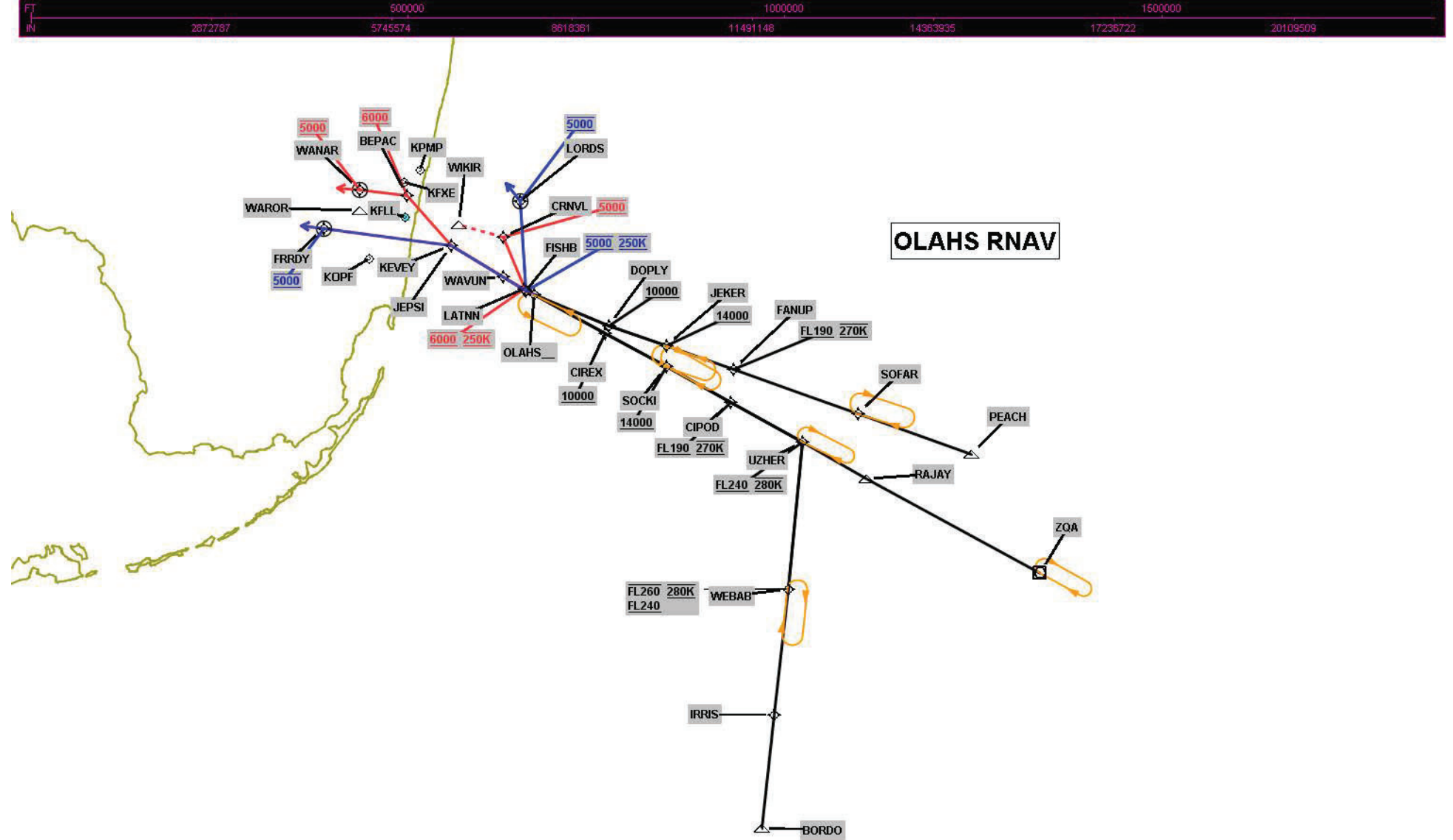


FEDERAL AVIATION ADMINISTRATION  
FLIGHT STANDARDS SERVICE  
STANDARD TERMINAL ARRIVAL (STAR)

Bearings, headings, courses, tracks and radials are magnetic. Elevations and altitudes are in feet, MSL. Altitudes are minimum altitudes unless otherwise indicated. Ceilings are in feet above airport elevation. Distances are in nautical miles. Visibilities are in statute miles or feet RVR unless otherwise indicated.

Arrival Name	Number	STAR Computer Code	Superseded Number	Dated	Effective Date
OLAHS (RNAV)	THREE	OLAHS.OLAHS3	TWO	05/19/2022	3 Nov 2022

Graphic Depiction 3



FEDERAL AVIATION ADMINISTRATION  
FLIGHT STANDARDS SERVICE  
STAR (DATA RECORD)

Arrival Name OLAHS (RNAV)	Number THREE	STAR Computer Code OLAHS.OLAHS3		Superseded Number TWO		Dated 05/19/2022	Effective Date 3 Nov 2022		
FIX/NAVAID	LAT/LONG	C	FO/FB	LEG TYPE	TC	DIST (NM)	ALTITUDE	SPEED	REMARKS
En Route Transition									
BORDO	240000.19N / 0782731.93W	Y		IF					BORDO.OLAHS3
IRRIS	242458.08N / 0782722.73W	Y	FB	TF	000.32	24.88			
WEBAB	245224.56N / 0782719.18W	Y	FB	TF	000.11	27.35	FL240BFL260	AT 280K	
UZHER	252434.54N / 0782728.63W	Y	FB	TF	359.75	32.07	AT/ABOVE FL240	AT 280K	
CIPOD	253136.14N / 0784547.91W	Y	FB	TF	292.97	18.00	AT/ABOVE FL190	AT 270K	
SOCKI	253751.30N / 0790212.96W	Y	FB	TF	292.84	16.10	AT/ABOVE 14000		
CIREX	254342.25N / 0791748.80W	Y	FB	TF	292.54	15.25	AT/ABOVE 10000		
OLAHS	255021.16N / 0793558.06W	Y	FB	TF	292.09	17.68			
En Route Transition									
JEKER	254220.99N / 0790249.77W	Y		IF			AT/ABOVE 14000		JEKER .OLAHS3
DOPLY	254523.99N / 0791713.37W	Y	FB	TF	283.22	13.35	AT/ABOVE 10000		
OLAHS	255021.16N / 0793558.06W	Y	FB	TF	286.34	17.62			
En Route Transition									
PEACH	252546.67N / 0774622.84W	Y		IF					PEACH.OLAHS3
SOFAR	253159.97N / 0781452.89W	Y	FB	TF	283.62	26.53			
HEYDR	253437.45N / 0782654.78W	Y	FB	TF	283.57	11.19			
FANUP	253844.80N / 0784558.99W	Y	FB	TF	283.48	17.72	AT/ABOVE FL190	AT 270K	
JEKER	254220.99N / 0790249.77W	Y	FB	TF	283.34	15.64	AT/ABOVE 14000		
DOPLY	254523.99N / 0791713.37W	Y	FB	TF	283.22	13.35	AT/ABOVE 10000		
OLAHS	255021.16N / 0793558.06W	Y	FB	TF	286.34	17.62			
En Route Transition									
WEBAB	245224.56N / 0782719.18W	Y		IF			FL240BFL260	AT 280K	WEBAB.OLAHS3
UZHER	252434.54N / 0782728.63W	Y	FB	TF	359.75	32.07	AT/ABOVE FL240	AT 280K	
CIPOD	253136.14N / 0784547.91W	Y	FB	TF	292.97	18.00	AT/ABOVE FL190	AT 270K	
SOCKI	253751.30N / 0790212.96W	Y	FB	TF	292.84	16.10	AT/ABOVE 14000		



FEDERAL AVIATION ADMINISTRATION  
FLIGHT STANDARDS SERVICE  
STAR (DATA RECORD)

Arrival Name OLAHS (RNAV)	Number THREE	STAR Computer Code OLAHS.OLAHS3		Superseded Number TWO		Dated 05/19/2022	Effective Date 3 Nov 2022		
FIX/NAVAID	LAT/LONG	C	FO/FB	LEG TYPE	TC	DIST (NM)	ALTITUDE	SPEED	REMARKS
CIREX	254342.25N / 0791748.80W	Y	FB	TF	292.54	15.25	AT/ABOVE 10000		
OLAHS	255021.16N / 0793558.06W	Y	FB	TF	292.09	17.68			
En Route Transition									
ZQA VOR/DME	250131.80N / 0772647.10W	Y		IF					ZQA.OLAHS3
RAJAY	251802.78N / 0781109.51W	Y	FB	TF	292.40	43.50			
UZHER	252434.54N / 0782728.63W	Y	FB	TF	293.82	16.15	AT/ABOVE FL240	AT 280K	
CIPOD	253136.14N / 0784547.91W	Y	FB	TF	292.97	18.00	AT/ABOVE FL190	AT 270K	
SOCKI	253751.30N / 0790212.96W	Y	FB	TF	292.84	16.10	AT/ABOVE 14000		
CIREX	254342.25N / 0791748.80W	Y	FB	TF	292.54	15.25	AT/ABOVE 10000		
OLAHS	255021.16N / 0793558.06W	Y	FB	TF	292.09	17.68			
Common Route									
OLAHS	255021.16N / 0793558.06W	Y		IF					OLAHS.OLAHS3
FISHB	255107.21N / 0793801.93W	Y	FB	TF	292.34	02.01	AT 5000	AT 250K	
LORDS	261024.71N / 0794138.34W	Y	FO	TF	350.42	19.51	AT 5000		
KFXE,KPMP				VM	314.00				
Common Route									
OLAHS	255021.16N / 0793558.06W	Y		IF					OLAHS.OLAHS3
FISHB	255107.21N / 0793801.93W	Y	FB	TF	292.34	02.01	AT 5000	AT 250K	
JEPSI	255915.58N / 0795708.65W	Y	FB	TF	295.29	19.05			
FRRDY	255957.26N / 0802824.83W	Y	FO	TF	271.52	28.18	AT 5000		
KOPF				VM	270.00				
Runway Transition									
OLAHS	255021.16N / 0793558.06W	Y		IF					
LATNN	255122.51N / 0793840.52W	Y	FB	TF	292.66	02.65	AT 6000	AT 250K	
WAVUN	255339.00N / 0794358.00W	Y	FB	TF	295.44	05.28			
KEVEY	255915.59N / 0795708.68W	Y	FB	TF	295.26	13.13			



FEDERAL AVIATION ADMINISTRATION  
 FLIGHT STANDARDS SERVICE  
 STAR (DATA RECORD)

Arrival Name OLAHS (RNAV)	Number THREE	STAR Computer Code OLAHS.OLAHS3		Superseded Number TWO	Dated 05/19/2022	Effective Date 3 Nov 2022			
<u>FIX/NAVAID</u>	<u>LAT/LONG</u>	<u>C</u>	<u>FO/FB</u>	<u>LEG TYPE</u>	<u>TC</u>	<u>DIST (NM)</u>	<u>ALTITUDE</u>	<u>SPEED</u>	<u>REMARKS</u>
BEPAC	260900.59N / 0800911.72W	Y	FB	TF	311.90	14.57	AT 6000		
WANAR	260903.58N / 0802046.09W	Y	FO	TF	270.32	10.41	AT 5000		
KFLL:RWY 10L,RWY 10R				FM	270.32				
Runway Transition									
OLAHS	255021.16N / 0793558.06W	Y		IF					
FISHB	255107.21N / 0793801.93W	Y	FB	TF	292.34	02.01	AT 5000	AT 250K	
CRNVL	260216.31N / 0794448.10W	Y	FB	TF	331.27	12.68	AT 5000		
KFLL:RWY 28L,RWY 28R									

