

FEDERAL AVIATION ADMINISTRATION
FLIGHT STANDARDS SERVICE
STANDARD TERMINAL ARRIVAL (STAR)

Bearings, headings, courses, tracks and radials are magnetic. Elevations and altitudes are in feet, MSL. Altitudes are minimum altitudes unless otherwise indicated.
Distances are in nautical miles (NM). Graphic depictions attached.

Arrival Name	Number	STAR Computer Code	Superseded Number	Dated	Effective Date
OSVEE (RNAV)	TWO	OSVEE.OSVEE2	ONE	01/10/2013	19MAY2022

TRANSITION ROUTES:

Transition Name	Transition Computer Codes	From FIX/NAVAID	To FIX/NAVAID	Course	Distance	MEA	MOCA	MAA	Crossing Altitudes / Fixes
LIBBO	LIBBO.OSVEE2	LIBBO	LIBBO						
			TAPOC	307.69	76.76	FL180			
			PUBOC	312.06	24.38	FL180			AT/ABOVE FL300
			JESTE	350.50	19.96	12000			AT/ABOVE FL270
			MOLEN	350.18	20.73	10000			BETWEEN FL220 AND FL240
ROVUE	ROVUE.OSVEE2	ROVUE	ROVUE						
			HANAI	030.42	41.23	FL280			AT/ABOVE FL280
			MOLEN	040.08	26.59	10000			BETWEEN FL220 AND FL240
ZONSO	ZONSO.OSVEE2	ZONSO	ZONSO						
			HANAI	080.16	39.44	FL280			AT/ABOVE FL280
			MOLEN	040.08	26.59	10000			BETWEEN FL220 AND FL240

ARRIVAL ROUTE DESCRIPTION:

FROM MOLEN ON TRACK 057.56/49.55 TO OCOVA.

LANDING RWY 3L: FROM OCOVA ON TRACK 056.61/2.95 TO CROSS OSVEE AT 7000, THEN ON HEADING 023.00. EXPECT RADAR VECTORS TO FINAL APPROACH COURSE.

LANDING RWY 21L/R: FROM OCOVA ON TRACK 056.61/2.95 TO CROSS OSVEE AT 7000, THEN ON HEADING 023.00. EXPECT RADAR VECTORS TO FINAL APPROACH COURSE.

PBN REQUIREMENT NOTES

RNAV 1 - DME/DME/IRU OR GPS

EQUIPMENT REQUIREMENT NOTES

RADAR REQUIRED

PROCEDURAL DATA NOTES:

FIXES AND/OR HOLDING PATTERNS:

CHART HOLDING AT SEATO: HOLD N, LT, 160.00 INBOUND, 9 NM LEGS.

COMMUNICATIONS:

CHART: TRAVIS APP CON. CHART: TWR. CHART: GND CON.

AIRPORTS SERVED:

TRAVIS AFB, FAIRFIELD, CA (KSUU)

LOST COMMUNICATIONS PROCEDURE:

FROM OSVEE, PROCEED DIRECT SEATO. EXECUTE ILS OR LOC RWY 21L OR TACAN RWY 3L APPROACH. IF UNABLE, HOLD AT SEATO AS DEPICTED, MAINTAIN 6000.

FEDERAL AVIATION ADMINISTRATION
FLIGHT STANDARDS SERVICE
STANDARD TERMINAL ARRIVAL (STAR)

Bearings, headings, courses, tracks and radials are magnetic. Elevations and altitudes are in feet, MSL. Altitudes are minimum altitudes unless otherwise indicated.
Distances are in nautical miles (NM). Graphic depictions attached.

Arrival Name	Number	STAR Computer Code	Superseded Number	Dated	Effective Date
OSVEE (RNAV)	TWO	OSVEE.OSVEE2	ONE	01/10/2013	19MAY2022

REMARKS:

ABBREVIATED AMENDMENT DOES NOT MEET PERIODIC REVIEW REQUIREMENTS.

ADDITIONAL FLIGHT DATA:

DME/DME ASSESSMENT: SAT (RNP 2.0)

REFERENCE MAGNETIC VARIATION = KSUU 13E/2020

CHART AT OSVEE TERMINUS: KSUU LANDING RWY 3L, 21L/R.

CHART I-TXV AND I-SUU LOCALIZERS.

CHART I-TXV AND I-SUU LOCALIZER FREQUENCIES.

FLIGHT INSPECTED BY:

PROCESSED IAW TECHNICAL SUPPORT GROUP (AJF-17) MEMO DATED 07/07/2021, SUBJECT: GUIDANCE FOR PROCEDURAL CHANGES REQUIRING FLIGHT INSPECTION VALIDATION

Digitally signed by

DAVID DANNER

Jan 31, 2022

Signature

Digitally signed by

DAVID DANNER

Jan 31, 2022

Digitally signed by

DAVID DANNER

Jan 31, 2022

Signature

DEVELOPED BY:

DAN POWELL

AJV-A442

12/01/2021

Name

Organization

Date

APPROVED BY:

PAT MULQUEEN

AJV-A440

Name

Organization

Date

CHANGES:

1. ROUTE DESCRIPTION CHANGED FROM LANDING RWY 21R TO LANDING RWY 21L/R.
2. LOST COMM CHANGED TO INCLUDE ILS OR LOC RWY 21L, OR TACAN RWY 3L.
3. LOST COMM INSTRUCTIONS CHANGED FROM: "FROM OSVEE, PROCEED DIRECT SEATO. EXECUTE ILS OR LOC RWY 21R OR TACAN TWY 3L APPROACH. IF UNABLE, HOLD AT SEATO AS DEPICTED, MAINTAIN 6000;" TO: "FROM OSVEE, PROCEED DIRECT SEATO. EXECUTE ILS OR LOC RWY 21L OR TACAN RWY 3L APPROACH. IF UNABLE, HOLD AT SEATO AS DEPICTED, MAINTAIN 6000."
4. REMOVED LOCALIZER RWY 21R (I-MZP) AND FREQUENCY FROM CHART.
5. ADDED LOCALIZER RWY 21L DEPICTION AND FREQUENCY (110.1) TO CHART.
6. ADDED TERMINUS DATA TO ADDITIONAL FLIGHT DATA.
7. ALL MAGNETIC COURSES/TRACKS INCREASED 3 DEGREES IN ACCORDANCE WITH MAG VAR CHANGE FROM 16E/1985 TO 13E/2020.
8. REMOVED MEA'S FROM COMMON ROUTE.

REASONS:

1. PROPONENT REQUESTED TO ADD RWY 21L TO APPROACH PLATE IN ORDER TO FACILITATE FMS PROCESSING.
2. PROPONENT REQUESTED TO ADD RWY 21L TO LOST COMM INSTRUCTIONS.
3. VERBIAGE REQUIRED TO REFLECT NEW RWY 21L LOST COMM PROCEDURES.
4. RWY 21R LOCALIZER WAS ERRONEOUSLY CHARTED.

FEDERAL AVIATION ADMINISTRATION
FLIGHT STANDARDS SERVICE
STANDARD TERMINAL ARRIVAL (STAR)

Bearings, headings, courses, tracks and radials are magnetic. Elevations and altitudes are in feet, MSL. Altitudes are minimum altitudes unless otherwise indicated.
Distances are in nautical miles (NM). Graphic depictions attached.

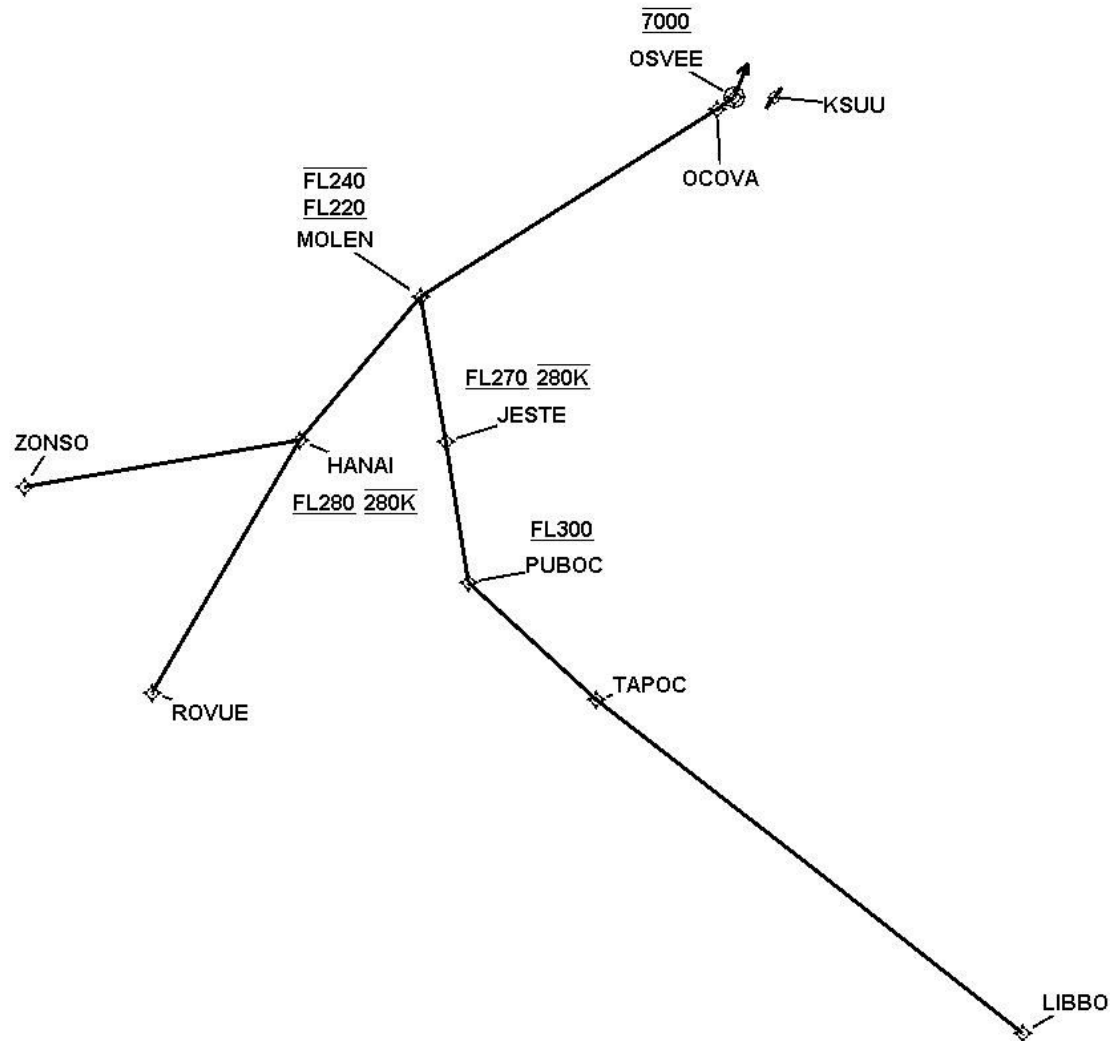
Arrival Name	Number	STAR Computer Code	Superseded Number	Dated	Effective Date
OSVEE (RNAV)	TWO	OSVEE.OSVEE2	ONE	01/10/2013	19MAY2020

5. PROPONENT REQUESTED LOCALIZER RWY 21L AND FREQUENCY BE LISTED ON GRAPHICAL DEPICTION.
6. TERMINUS INFO MEETS CURRENT CRITERIA STANDARDS.
7. MAG VAR CHANGE.
8. NO LONGER CHARTED.

FEDERAL AVIATION ADMINISTRATION
FLIGHT STANDARDS SERVICE
STANDARD TERMINAL ARRIVAL (STAR)

Bearings, headings, courses, tracks and radials are magnetic. Elevations and altitudes are in feet, MSL. Altitudes are minimum altitudes unless otherwise indicated.
Distances are in nautical miles (NM). Graphic depictions attached.

Arrival Name	Number	STAR Computer Code	Superseded Number	Dated	Effective Date
OSVEE (RNAV)	TWO	OSVEE.OSVEE2	ONE	01/10/2013	19MAY2022
Graphic Depiction 1					



FEDERAL AVIATION ADMINISTRATION
FLIGHT STANDARDS SERVICE
STAR (DATA RECORD)

Arrival Name OSVEE (RNAV)	Number TWO	STAR Computer Code OSVEE.OSVEE2	Superseded Number ONE	Dated 01/10/2013	Effective Date 19MAY2022				
FIX/NAVAID	LAT/LONG	C	FO/FB	LEG TYPE	TC	DIST (NM)	ALTITUDE	SPEED	REMARKS
En Route Transition									
LIBBO	360000.00N / 1215000.00W	Y		IF					LIBBO.OSVEE2
TAPOC	365913.41N / 1225041.62W	Y	FB	TF	320.69	76.76			
PUBOC	371912.60N / 1230811.93W	Y	FB	TF	325.06	24.38	AT/ABOVE FL300		
JESTE	373909.22N / 1230639.85W	Y	FB	TF	003.50	19.96	AT/ABOVE FL270	AT 280K	
MOLEN	375952.34N / 1230512.47W	Y	FB	TF	003.18	20.73	FL220BFL240		
En Route Transition									
ROVUE	371402.24N / 1240749.55W	Y		IF					ROVUE.OSVEE2
HANAI	374355.92N / 1233205.91W	Y	FB	TF	043.42	41.23	AT/ABOVE FL280	AT 280K	
MOLEN	375952.34N / 1230512.47W	Y	FB	TF	053.08	26.59	FL220BFL240		
En Route Transition									
ZONSO	374617.05N / 1242144.57W	Y		IF					ZONSO.OSVEE2
HANAI	374355.92N / 1233205.91W	Y	FB	TF	093.16	39.44	AT/ABOVE FL280	AT 280K	
MOLEN	375952.34N / 1230512.47W	Y	FB	TF	053.08	26.59	FL220BFL240		
Common Route									
MOLEN	375952.34N / 1230512.47W	Y		IF			FL220BFL240		MOLEN.OSVEE2
OCOVA	381607.81N / 1220552.67W	Y	FB	TF	070.56	49.55			
Runway Transition									
OCOVA	381607.81N / 1220552.67W	Y		IF					
OSVEE	381709.59N / 1220221.61W	Y	FO	TF	069.61	02.95	AT 7000		
KSUU:RWY 3L				VM	036.00				

FEDERAL AVIATION ADMINISTRATION
FLIGHT STANDARDS SERVICE
STAR (DATA RECORD)

Arrival Name	Number	STAR Computer Code	Superseded Number	Dated	Effective Date
OSVEE (RNAV)	TWO	OSVEE.OSVEE2	ONE	01/10/2013	19MAY2022

FIX/NAVAID	LAT/LONG	C	FO/FB	LEG TYPE	TC	DIST (NM)	ALTITUDE	SPEED	REMARKS
Runway Transition									
OCOVA	381607.81N / 1220552.67W	Y		IF					
OSVEE	381709.59N / 1220221.61W	Y	FO	TF	069.61	02.95	AT 7000		
KSUU:RWY 21L,RWY 21R				VM	036.00				