

FEDERAL AVIATION ADMINISTRATION  
FLIGHT STANDARDS SERVICE  
STANDARD TERMINAL ARRIVAL (STAR)

Bearings, headings, courses, tracks and radials are magnetic. Elevations and altitudes are in feet, MSL. Altitudes are minimum altitudes unless otherwise indicated.  
Ceilings are in feet above airport elevation. Distances are in nautical miles. Visibilities are in statute miles or feet RVR unless otherwise indicated.

Arrival Name	Number	STAR Computer Code	Superseded Number	Dated	Effective Date
WAYNZ (RNAV)	ONE	PRIVO.WAYNZ1	NONE		21 MAR 2024

TRANSITION ROUTES:

Transition Name	Transition Computer Codes	From FIX/NAVAID	To FIX/NAVAID	Course	Distance	MEA	MOCA	MAA	Crossing Altitudes / Fixes
PHILIPSBURG	PSB.WAYNZ1	PSB VORTAC	PSB VORTAC						
			JARAF	177.33	24.50	12000	4900		
			PRIVO	177.41	26.70	12000	4700		
WILSS	WILSS.WAYNZ1	WILSS	WILSS						
			PRIVO	236.30	16.73	12000	4600		

ARRIVAL ROUTE DESCRIPTION:

FROM PRIVO ON TRACK 177.49/10.37 TO CROSS DAFIX AT 12000, THEN ON TRACK 177.52/10.54 TO CROSS WAYNZ AT 10000 AND AT 250 KIAS.

LANDING RWY 1C/R: FROM WAYNZ ON TRACK 179.88/14.34 TO CROSS MAPEL AT 7000, THEN ON TRACK 152.60/18.15 TO CROSS MOWAT AT 5000, THEN ON TRACK 188.90/6.10 TO CROSS HUSEL AT 4000, THEN ON TRACK 189.88/15.37 TO YACKK, THEN ON TRACK 190.95/13.71 TO TICON, THEN ON TRACK 190.95. EXPECT RADAR VECTORS TO FINAL APPROACH COURSE.

LANDING RWY 1L, 30: FROM WAYNZ ON TRACK 179.88/14.34 TO CROSS MAPEL AT 7000, THEN ON TRACK 187.25/21.57 TO CROSS KUKSE AT 5000, THEN ON TRACK 191.11/12.77 TO ELISN, THEN ON TRACK 190.55/18.10 TO MIKEJ, THEN ON TRACK 190.55. EXPECT RADAR VECTORS TO FINAL APPROACH COURSE.

LANDING RWY 19L/C/R: FROM WAYNZ ON TRACK 179.88/3.00 TO CROSS SULII AT 10000, THEN ON TRACK 179.88. EXPECT RADAR VECTORS TO FINAL APPROACH COURSE.

PBN REQUIREMENT NOTES:

RNAV 1 - DME/DME/IRU OR GPS

EQUIPMENT REQUIREMENT NOTES:

RADAR REQUIRED

PROCEDURAL DATA NOTES:

NOTE: JET AIRCRAFT ONLY

NOTE: MAINTAIN LAST ASSIGNED ALTITUDE UNTIL "CLEARED TO DESCEND VIA WAYNZ1 STAR".

FIXES AND/OR HOLDING PATTERNS:

CHART HOLDING AT DAFIX: HOLD N, LT, 182.00 INBOUND, 4 NM LEGS, 210 KIAS.

COMMUNICATIONS:

CHART: POTOMAC APP CON

AIRPORTS SERVED:

AIRPORT ID  
KIAD

CITY  
WASHINGTON

STATE  
DC

LOST COMMUNICATIONS PREFERENCES:



FEDERAL AVIATION ADMINISTRATION  
FLIGHT STANDARDS SERVICE  
STANDARD TERMINAL ARRIVAL (STAR)

Bearings, headings, courses, tracks and radials are magnetic. Elevations and altitudes are in feet, MSL. Altitudes are minimum altitudes unless otherwise indicated.  
Ceilings are in feet above airport elevation. Distances are in nautical miles. Visibilities are in statute miles or feet RVR unless otherwise indicated.

Arrival Name	Number	STAR Computer Code	Superseded Number	Dated	Effective Date
WAYNZ (RNAV)	ONE	PRVO.WAYNZ1	NONE		21 MAR 2024

**REMARKS:**

THE ENVIRONMENTAL REVIEW UNDER ORDER 1050.1 (LATEST EDITION) AND THE NOISE SCREENING HAVE BEEN ACCOMPLISHED.

**ADDITIONAL FLIGHT DATA:**

DME/DME ASSESSMENT: SAT (RNP 2.0)

MAG VAR: KIAD 10W/2000.

CHART: R-4009, P40.

CHART: P56A, P56B

CHART: AT TICON TERMINUS: KIAD LDG RWY 1C/R

CHART: AT MIKEJ TERMINUS: KIAD LDG RWY 1L, RWY 30

CHART: AT SULII TERMINUS: KIAD LDG RWY 19L/C/R

*Digitally signed by*

**FLIGHT INSPECTED BY:**

**ROBERT G HAMILTON**

**ORGANIZATION:****DATE:**

BOB S PRESSLER

Jan 04, 2024

FPO

01/03/2024

Flight Inspected Signature: \_\_\_\_\_

**DEVELOPED BY:**

*Digitally signed by*

David Johnson

**ERIC N SUSKI**

Dec 04, 2023

ESA PBN TEAM  
ONE LEAD

10/04/2023

Developed By Signature: \_\_\_\_\_

**APPROVED BY:**

*Digitally signed by*

JOHNNIE BAKER

**ERIC N SUSKI**

Dec 04, 2023

AJV-A430

Approved By Signature: \_\_\_\_\_

**CHANGES:****REASONS:**

12/12/23: THIS IS AN UPDATED COPY OF THE FORM DEVELOPED ON 10/04/23.

REMOVED NOTE: ARTCC will issue landing direction assignment (North or South) and Potomac TRACON will issue runway assignments.

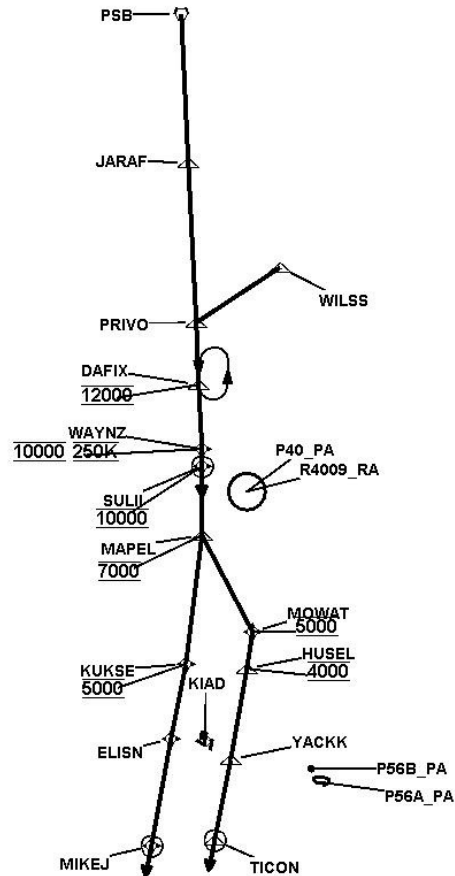
PAGE 5 REMARKS COMPUTER CODE TYPO CHANGED FROM MAPEL3 TO WAYNZ1

QUALITY  
14  
CHECKED

FEDERAL AVIATION ADMINISTRATION  
FLIGHT STANDARDS SERVICE  
STANDARD TERMINAL ARRIVAL (STAR)

Bearings, headings, courses, tracks and radials are magnetic. Elevations and altitudes are in feet, MSL. Altitudes are minimum altitudes unless otherwise indicated.  
Ceilings are in feet above airport elevation. Distances are in nautical miles. Visibilities are in statute miles or feet RVR unless otherwise indicated.

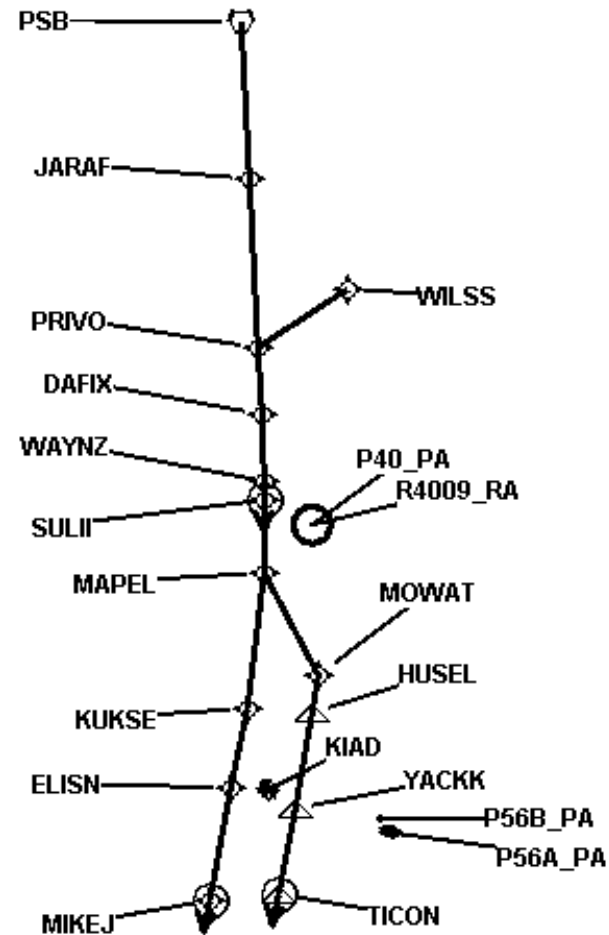
Arrival Name	Number	STAR Computer Code	Superseded Number	Dated	Effective Date
WAYNZ (RNAV)	ONE	PRIVO.WAYNZ1	NONE		21 MAR 2024
Graphic Depiction 1					



FEDERAL AVIATION ADMINISTRATION  
FLIGHT STANDARDS SERVICE  
STANDARD TERMINAL ARRIVAL (STAR)

Bearings, headings, courses, tracks and radials are magnetic. Elevations and altitudes are in feet, MSL. Altitudes are minimum altitudes unless otherwise indicated.  
Ceilings are in feet above airport elevation. Distances are in nautical miles. Visibilities are in statute miles or feet RVR unless otherwise indicated.

Arrival Name	Number	STAR Computer Code	Superseded Number	Dated	Effective Date
WAYNZ (RNAV)	ONE	PRVO.WAYNZ1	NONE		21 MAR 2024
Graphic Depiction 2					



FEDERAL AVIATION ADMINISTRATION  
FLIGHT STANDARDS SERVICE  
STAR (DATA RECORD)

Arrival Name WAYNZ (RNAV)	Number ONE		STAR Computer Code PRIVO.WAYNZ1		Superseded Number NONE		Dated		Effective Date 21 MAR 2024
<u>FIX/NAVAID</u>	<u>LAT/LONG</u>	<u>C</u>	<u>FO/FB</u>	<u>LEG TYPE</u>	<u>TC</u>	<u>DIST (NM)</u>	<u>ALTITUDE</u>	<u>SPEED</u>	<u>REMARKS</u>
En Route Transition									
PSB VORTAC	405458.53N / 0775933.78W	Y		IF					PSB.WAYNZ1
JARAF	403103.18N / 0775231.02W	Y	FB	TF	167.33	24.50			
PRIVO	400458.57N / 0774456.01W	Y	FB	TF	167.41	26.70			
En Route Transition									
WILSS	401633.51N / 0772910.74W	Y		IF					WILSS.WAYNZ1
PRIVO	400458.57N / 0774456.01W	Y	FB	TF	226.30	16.73			
Common Route									
PRIVO	400458.57N / 0774456.01W	Y		IF					PRIVO.WAYNZ1
DAFIX	395450.43N / 0774200.78W	Y	FB	TF	167.49	10.37	AT 12000		
WAYNZ	394432.58N / 0773903.69W	Y	FB	TF	167.52	10.54	AT 10000	AT 250K	
Runway Transition									
WAYNZ	394432.58N / 0773903.69W	Y		IF			AT 10000	AT 250K	
MAPEL	393024.59N / 0773548.34W	Y	FB	TF	169.88	14.34	AT 7000		
MOWAT	391557.60N / 0772136.60W	Y	FB	TF	142.60	18.15	AT 5000		
HUSEL	390951.60N / 0772127.60W	Y	FB	TF	178.90	06.10	AT 4000		
YACKK	385428.80N / 0772125.20W	Y	FB	TF	179.88	15.37			
TICON	384045.60N / 0772142.60W	Y	FO	TF	180.95	13.71			
KIAD:RWY 1C,RWY 1R				FM	180.95				
Runway Transition									
WAYNZ	394432.58N / 0773903.69W	Y		IF			AT 10000	AT 250K	
MAPEL	393024.59N / 0773548.34W	Y	FB	TF	169.88	14.34	AT 7000		
KUKSE	390850.86N / 0773428.65W	Y	FB	TF	177.25	21.57	AT 5000		
ELISN	385604.35N / 0773447.64W	Y	FB	TF	181.11	12.77			

FEDERAL AVIATION ADMINISTRATION  
FLIGHT STANDARDS SERVICE  
STAR (DATA RECORD)

Arrival Name	Number	STAR Computer Code		Superseded Number		Dated	Effective Date		
WAYNZ (RNAV)	ONE	PRIVO.WAYNZ1		NONE			21 MAR 2024		
<u>FIX/NAVAID</u>	<u>LAT/LONG</u>	<u>C</u>	<u>FO/FB</u>	<u>LEG TYPE</u>	<u>TC</u>	<u>DIST (NM)</u>	<u>ALTITUDE</u>	<u>SPEED</u>	<u>REMARKS</u>
MIKEJ	383757.45N / 0773500.92W	Y	FO	TF	180.55	18.10			
KIAD:RWY 1L,RWY 30				FM	180.55				
Runway Transition									
WAYNZ	394432.58N / 0773903.69W	Y		IF			AT 10000	AT 250K	
SULII	394135.24N / 0773822.72W	Y	FO	TF	169.88	03.00	AT 10000		
KIAD:RWY 19C,RWY 19L,RWY 19R				FM	169.88				