

FEDERAL AVIATION ADMINISTRATION
FLIGHT STANDARDS SERVICE
STANDARD TERMINAL ARRIVAL (STAR)

Bearings, headings, courses, tracks and radials are magnetic. Elevations and altitudes are in feet, MSL. Altitudes are minimum altitudes unless otherwise indicated.
Distances are in nautical miles (NM). Graphic depictions attached.

Arrival Name	Number	STAR Computer Code	Superseded Number	Dated	Effective Date
SN DIA (RNAV)	FOUR	SN DIA.SNDIA4	THREE	8/1/2014	31 DEC 20

TRANSITION ROUTES:

Transition Name	Transition Computer Codes	From FIX/NAVAID	To FIX/NAVAID	Course	Distance	MEA	MOCA	MAA	Crossing Altitudes / Fixes
DATME	DATME.SNDIA4	DATME	DATME						
			EBIDE	188.82	19.65	FL200	12400		
			ESPAN	188.66	15.00	FL200	11900		
			DETEC	188.33	13.43	FL200	13700		BETWEEN FL200 AND FL280
			SN DIA	187.42	19.86	13100			
FITEE	FITEE.SNDIA4	FITEE	FITEE			FL200			BETWEEN FL200 AND FL280
			SN DIA	235.35	20.83	13100	10400		
TAMEY	TAMEY.SNDIA4	TAMEY	TAMEY						
			FITEE	235.76	37.53	FL200	15300		BETWEEN FL200 AND FL280
			SN DIA	235.35	20.83	13100	10400		

ARRIVAL ROUTE DESCRIPTION:

FROM SN DIA ON TRACK 192.78/7.02 TO CROSS VLCNO BETWEEN 14000 AND 16000 AND AT 250 KIAS, THEN ON TRACK 192.80/12.93 TO CROSS ASIDE BETWEEN 10000 AND 11000 AND AT 250 KIAS.

LANDING RWY 3: FROM ASIDE ON TRACK 195.77/9.27 TO CROSS CRSTN AT 9000 AND AT 210 KIAS. EXPECT RNAV (RNP) APPROACH OR RADAR VECTORS TO FINAL APPROACH COURSE.

LANDING RWY 8: FROM ASIDE ON TRACK 195.77/9.27 TO CROSS CRSTN AT 9000 AND AT 210 KIAS. EXPECT RNAV (RNP) OR ILS APPROACH OR RADAR VECTORS TO FINAL APPROACH COURSE.

LANDING RWY 21/26: FROM ASIDE ON TRACK 108.79/8.01 TO CROSS CADAT AT 9000 AND AT OR BELOW 210 KIAS. EXPECT RNAV (RNP) APPROACH OR RADAR VECTORS TO FINAL APPROACH COURSE.

PROCEDURAL DATA NOTES:

NOTE: RADAR REQUIRED

NOTE: RNAV 1

NOTE: DME/DME/IRU OR GPS REQUIRED

NOTE: TURBOJET AIRCRAFT ONLY

NOTE: FOR NON-GPS EQUIPPED AIRCRAFT, SAF DME MUST BE OPERATIONAL.

NOTE: CROSS DETEC AT 270 KIAS. CROSS FITEE AT 270 KIAS.

NOTE: LANDING RWY 3: EXPECT RNAV RNP APPROACH CLEARANCE OR RADAR VECTORS TO FINAL APPROACH COURSE PRIOR TO CRSTN.

NOTE: LANDING RWY 8: EXPECT RNAV RNP OR ILS APPROACH CLEARANCE OR RADAR VECTORS TO FINAL APPROACH COURSE PRIOR TO CRSTN.

NOTE: LANDING RWYS 21, 26: EXPECT RNAV RNP APPROACH CLEARANCE OR RADAR VECTORS TO FINAL APPROACH COURSE PRIOR TO CADAT.

FIXES AND/OR HOLDING PATTERNS:

CHART HOLDING AT ESPAN: N, RT, 188.66 INBOUND, 10 NM LEGS.

CHART HOLDING AT FITEE: NE, RT, 235.35 INBOUND, 10 NM LEGS.

CHART HOLDING AT VLCNO: N, RT, 192.80 INBOUND, 10 NM LEGS.

This is a corrected copy of a procedure previously published in NFDDs 187 and 196.

****The correct effective date for this procedure is 31 DEC 2020.**

A previous version (NFDD 187) of this procedure had an incorrect effective date.

QUALITY
16
CHECKED

FEDERAL AVIATION ADMINISTRATION
FLIGHT STANDARDS SERVICE
STANDARD TERMINAL ARRIVAL (STAR)

Bearings, headings, courses, tracks and radials are magnetic. Elevations and altitudes are in feet, MSL. Altitudes are minimum altitudes unless otherwise indicated.
Distances are in nautical miles (NM). Graphic depictions attached.

Arrival Name SN DIA (RNAV)	Number FOUR	STAR Computer Code SN DIA.SNDIA4	Superseded Number THREE	Dated 8/1/2014	Effective Date 31 DEC 20
--------------------------------------	-----------------------	--	-----------------------------------	--------------------------	------------------------------------

COMMUNICATIONS:

ABQ ARTCC, ABQ APP CON, ABQ ATIS

AIRPORTS SERVED:

ALBUQUERQUE INTL SUNPORT, ALBUQUERQUE, NM (KABQ)

LOST COMMUNICATIONS PROCEDURE:

FROM OVER CADAT, EXECUTE RNAV RNP APPROACH FOR ASSIGNED RUNWAY. NON-RNAV (RNP) FROM OVER CADAT, FLY HEADING 175° CLIMB AND MAINTAIN 10000 THEN DIRECT ABQ VOR AND HOLD.

REMARKS:ADDITIONAL FLIGHT DATA:

DME/DME ASSESSMENT: SAT (RNP 2.0)
REFERENCE MAGNETIC VARIATION = KABQ 11E/1995
CHART TERMINUS AT CRSTN LDG RWY 03/08.
CHART TERMINUS AT CADAT LDG RWY 21/26.

FLIGHT INSPECTED BY:

Processed IAW Aircraft Operations Group (AJF-10) Memo,
April 29, 2020 Subject: Flight Inspection Review Not Required.

Name

Organization

Date

*Digitally signed by***DAVID DANNER**

Aug 17, 2020

*Digitally signed by***DAVID DANNER**

Aug 17, 2020

Signature

DEVELOPED BY:

BETSY SUTTON

Name

ALBUQUERQUE TOWER

Organization

4/22/2020

Date

*Digitally signed by***DAVID DANNER**

Aug 17, 2020

Signature

APPROVED BY:

PATRICK MULQUEEN, MANAGER

Name

AJV-A440

Organization

Date

Signature

CHANGES:

1. ADDED LOST COMMUNICATIONS PROCEDURE.
2. ADDED TERMINUS RWY DATA AT CRSTN AND CADAT IN ADDITIONAL FLIGHT DATA.

REASONS:

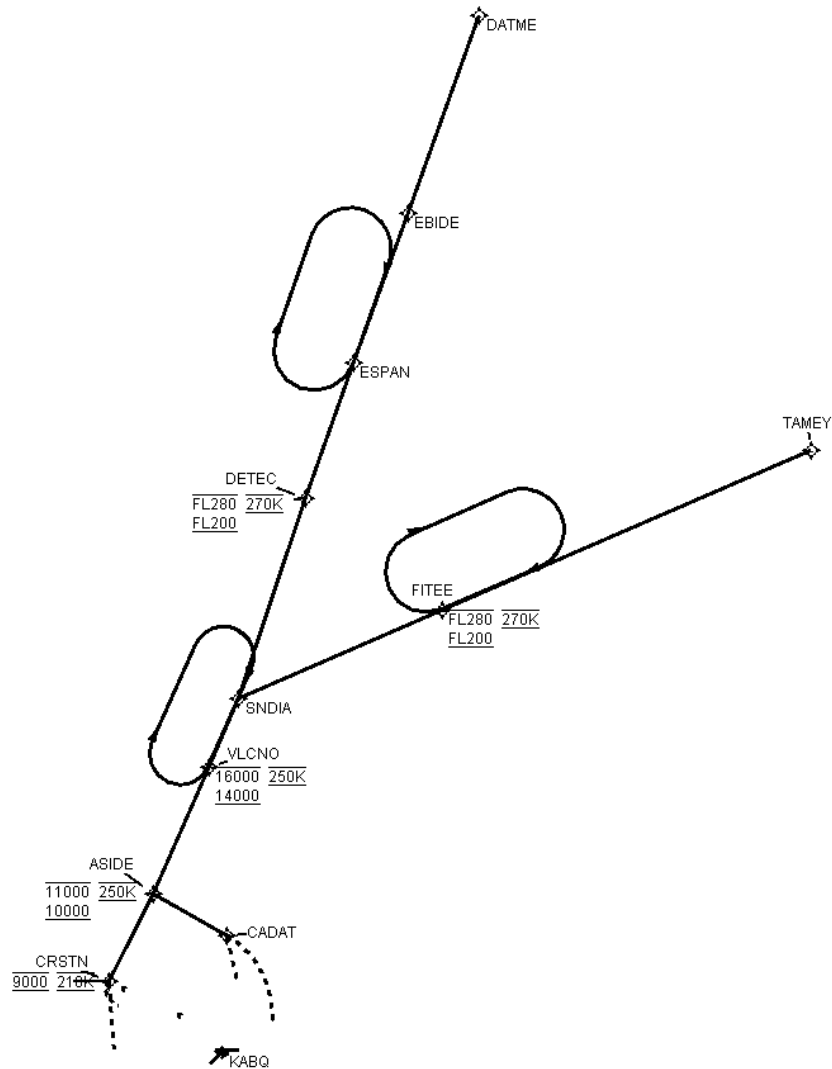
1. ATSAP WAS FILED UNTIL LOST COMMUNACATIONS ROUTING IS ADDED.
2. IAW 8260.19H, 4-5-1.b(8)(b).

QUALITY
16
CHECKED

FEDERAL AVIATION ADMINISTRATION
FLIGHT STANDARDS SERVICE
STANDARD TERMINAL ARRIVAL (STAR)

Bearings, headings, courses, tracks and radials are magnetic. Elevations and altitudes are in feet, MSL. Altitudes are minimum altitudes unless otherwise indicated.
Distances are in nautical miles (NM). Graphic depictions attached.

Arrival Name	Number	STAR Computer Code	Superseded Number	Dated	Effective Date
SN DIA (RNAV)	FOUR	SN DIA.SNDIA4	THREE	8/1/2014	31 DEC 20
Graphic Depiction 1					



QUALITY
16
CHECKED

FEDERAL AVIATION ADMINISTRATION
FLIGHT STANDARDS SERVICE
STAR (DATA RECORD)

Arrival Name SNDIA (RNAV)	Number FOUR	STAR Computer Code SNDIA.SNDIA4	Superseded Number THREE	Dated 8/1/2014	Effective Date 31 DEC 20				
FIX/NAVAID	LAT/LONG	C	FO/FB	LEG TYPE	TC	DIST (NM)	ALTITUDE	SPEED	REMARKS
En Route Transition									
DATME	363951.15N / 1060656.76W	Y		IF					DATME.SNDIA4
EBIDE	362120.25N / 1061511.63W	Y	FB	TF	199.82	19.65			
ESPAN	360711.35N / 1062125.34W	Y	FB	TF	199.66	15.00			
DETEC	355429.87N / 1062653.68W	Y	FB	TF	199.33	13.43	FL200BFL280	AT 270K	
SNDIA	353537.42N / 1063435.33W	Y	FB	TF	198.42	19.86			
En Route Transition									
FITEE	354401.81N / 1061111.88W	Y		IF			FL200BFL280	AT 270K	FITEE.SNDIA4
SNDIA	353537.42N / 1063435.33W	Y	FB	TF	246.35	20.83			
En Route Transition									
TAMEY	355859.06N / 1052850.70W	Y		IF					TAMEY.SNDIA4
FITEE	354401.81N / 1061111.88W	Y	FB	TF	246.76	37.53	FL200BFL280	AT 270K	
SNDIA	353537.42N / 1063435.33W	Y	FB	TF	246.35	20.83			
Common Route									
SNDIA	353537.42N / 1063435.33W	Y		IF					SNDIA.SNDIA4
VLCNO	352911.26N / 1063803.36W	Y	FB	TF	203.78	07.02	14000B16000	AT 250K	
ASIDE	351720.12N / 1064425.88W	Y	FB	TF	203.80	12.93	10000B11000	AT 250K	
Runway Transition									
ASIDE	351720.12N / 1064425.88W	Y		IF			10000B11000	AT 250K	
CRSTN	350902.90N / 1064931.21W	Y	FB	TF	206.77	09.27	AT 9000	AT 210K	
KABQ:RWY 3									

QUALITY
16
CHECKED

FEDERAL AVIATION ADMINISTRATION
FLIGHT STANDARDS SERVICE
STAR (DATA RECORD)

Arrival Name SNDIA (RNAV)	Number FOUR		STAR Computer Code SNDIA.SNDIA4		Superseded Number THREE		Dated 8/1/2014	Effective Date 31 DEC 20	
FIX/NAVAID	LAT/LONG	C	FO/FB	LEG TYPE	TC	DIST (NM)	ALTITUDE	SPEED	REMARKS
Runway Transition									
ASIDE	351720.12N / 1064425.88W	Y		IF			10000B11000	AT 250K	
CRSTN	350902.90N / 1064931.21W	Y	FB	TF	206.77	09.27	AT 9000	AT 210K	
KABQ:RWY 8									
Runway Transition									
ASIDE	351720.12N / 1064425.88W	Y		IF			10000B11000	AT 250K	
CADAT	351320.76N / 1063556.92W	Y	FB	TF	119.79	08.01	AT 9000	AT/BELOW 210K	
KABQ:RWY 21,RWY 26									

QUALITY
16
CHECKED