

FEDERAL AVIATION ADMINISTRATION
FLIGHT STANDARDS SERVICE
STANDARD TERMINAL ARRIVAL (STAR)

Bearings, headings, courses, tracks and radials are magnetic. Elevations and altitudes are in feet, MSL. Altitudes are minimum altitudes unless otherwise indicated.
Ceilings are in feet above airport elevation. Distances are in nautical miles. Visibilities are in statute miles or feet RVR unless otherwise indicated.

Arrival Name	Number	STAR Computer Code	Superseded Number	Dated	Effective Date
WAPPL (RNAV)	SEVEN	WAPPL.WAPPL7	SIX	10/07/2021	12 JUN 2025

TRANSITION ROUTES:

Transition Name	Transition Computer Codes	From FIX/NAVAID	To FIX/NAVAID	Course	Distance	MEA	MOCA	MAA	Crossing Altitudes / Fixes
ALEXANDRIA	AEX.WAPPL7	AEX VORTAC	AEX VORTAC						
			BRWCK	234.51	73.99	10000	1800		BRWCK AT/ABOVE FL240
			WAPPL	233.89	38.76	9000	1600		WAPPL BETWEEN FL220 AND FL270
PLANB	PLANB.WAPPL7	PLANB	PLANB						
			ZEBBB	188.78	59.82	9000	2000		
			WAPPL	216.07	30.00	9000	1600		WAPPL BETWEEN FL220 AND FL270
SWEUP	SWEUP.WAPPL7	SWEUP	SWEUP						
			JMIKE	216.68	92.15	10000	1900		JMIKE AT/ABOVE FL240
			ZEBBB	215.95	12.45	9000	1700		
			WAPPL	216.07	30.00	9000	1600		WAPPL BETWEEN FL220 AND FL270
ZEBBB	ZEBBB.WAPPL7	ZEBBB	ZEBBB						
			WAPPL	216.07	30.00	9000	1600		WAPPL BETWEEN FL220 AND FL270

ARRIVAL ROUTE DESCRIPTION:

HOU: FROM WAPPL ON TRACK 249.93/16.03 TO CROSS WLMOR BETWEEN 15000 AND FL210, THEN ON TRACK 249.84/10.00 TO HUDZY, THEN ON TRACK 249.71/6.00 TO CROSS CLWSN BETWEEN 12000 AND 14000, THEN ON TRACK 249.65/13.00 TO CROSS SWWAA BETWEEN 10000 AND 12000 AND AT 250 KIAS, THEN ON TRACK 191.33/9.16 TO CROSS PUSHN AT OR ABOVE 8000.

LANDING HOU RWY 4: FROM PUSHN ON TRACK 192.29/6.10 TO CROSS BUGZY AT OR BELOW 10000, THEN ON TRACK 192.07/2.42 TO CROSS PRTH AT OR BELOW 7000, THEN ON TRACK 176.51/9.55 TO CROSS SHUUG AT 6000 AND AT 210 KIAS, THEN ON TRACK 222.00/2.00 TO CROSS EMARR AT 6000, THEN ON TRACK 222.00. EXPECT RADAR VECTORS TO FINAL APPROACH COURSE.

LANDING HOU RWY 13L/R: FROM PUSHN ON TRACK 192.29/6.10 TO CROSS BUGZY AT OR BELOW 10000, THEN ON TRACK 192.07/2.42 TO CROSS PRTH AT OR BELOW 7000, THEN ON TRACK 200.29/4.40 TO CROSS MOLLR AT 6000 AND AT 210 KIAS, THEN ON TRACK 250.96/5.99 TO VILLI, THEN ON TRACK 310.79/2.80 TO CROSS ALLY AT 6000, THEN ON TRACK 310.79. EXPECT RADAR VECTORS TO FINAL APPROACH COURSE.

LANDING HOU RWY 22: FROM PUSHN ON TRACK 192.29/6.10 TO CROSS BUGZY AT OR BELOW 10000, THEN ON TRACK 174.80/7.61 TO CROSS RTWNG AT 7000 AND AT 210 KIAS, THEN ON TRACK 111.30/4.40 TO CROSS MAAH AT 7000, THEN ON TRACK 111.30. EXPECT RADAR VECTORS TO FINAL APPROACH COURSE.

LANDING HOU RWY 31L/R: FROM PUSHN ON TRACK 192.29/6.10 TO CROSS BUGZY AT OR BELOW 10000, THEN ON TRACK 192.07/2.42 TO CROSS PRTH AT OR BELOW 7000, THEN ON TRACK 126.35/3.00 TO CROSS UBETR AT 6000 AND AT 210 KIAS, THEN ON TRACK 126.35. EXPECT RADAR VECTORS TO FINAL APPROACH COURSE.

LANDING GLS/TME/AXH/HPY/T41/54T/T00/SGR/ARM/BYY/LBX/LVJ/IWS/EFD: FROM WAPPL ON TRACK 249.93/16.03 TO CROSS WLMOR BETWEEN 15000 AND FL210, THEN ON TRACK 249.84/10.00 TO HUDZY, THEN ON TRACK 249.71/6.00 TO CROSS CLWSN BETWEEN 12000 AND 14000, THEN ON TRACK 249.65/13.00 TO CROSS SWWAA BETWEEN 10000 AND 12000 AND AT 250 KIAS, THEN ON TRACK 191.33/9.16 TO CROSS PUSHN AT OR ABOVE 8000, THEN ON TRACK 192.29/6.10 TO CROSS BUGZY AT OR BELOW 10000, THEN ON TRACK 174.80/8.61 TO CROSS PLKTN AT 8000, THEN ON TRACK 174.80. EXPECT RADAR VECTORS TO FINAL APPROACH COURSE.

PBN REQUIREMENT NOTES:

RNAV 1 - DME/DME/IRU OR GPS

EQUIPMENT REQUIREMENT NOTES:

RADAR REQUIRED

FEDERAL AVIATION ADMINISTRATION
FLIGHT STANDARDS SERVICE
STANDARD TERMINAL ARRIVAL (STAR)

Bearings, headings, courses, tracks and radials are magnetic. Elevations and altitudes are in feet, MSL. Altitudes are minimum altitudes unless otherwise indicated.
Ceilings are in feet above airport elevation. Distances are in nautical miles. Visibilities are in statute miles or feet RVR unless otherwise indicated.

Arrival Name	Number	STAR Computer Code	Superseded Number	Dated	Effective Date
WAPPL (RNAV)	SEVEN	WAPPL.WAPPL7	SIX	10/07/2021	12 JUN 2025

PROCEDURAL DATA NOTES:

NOTE: EXPECT RUNWAY ASSIGNMENT FROM HOUSTON TRACON UPON INITIAL CONTACT.
NOTE: JET AND TURBOPROP AIRCRAFT CAPABLE OF 280 KIAS OR GREATER ONLY.
NOTE: JET AIRCRAFT DESCEND VIA MACH NUMBER UNTIL 280 KIAS, IF UNABLE, ADVISE ATC.
NOTE: EXCEPT FOR AIRCRAFT DEPARTING SHV, PLANB TRANSITION DO NOT FILE - TO BE ASSIGNED BY ATC.
NOTE: ZEBBB TRANSITION DO NOT FILE - TO BE ASSIGNED BY ATC.

FIXES AND/OR HOLDING PATTERNS:

CHART HOLDING AT BRWCK: HOLD NE, LT, 234.51 INBOUND, 16 NM LEGS.
CHART HOLDING AT CLWSN: HOLD E, RT, 249.71 INBOUND, 16 NM LEGS.
CHART HOLDING AT JMIKE: HOLD NE, LT, 216.68 INBOUND, 16 NM LEGS.
CHART HOLDING AT WAPPL: HOLD NE, LT, 233.89 INBOUND, 10 NM LEGS.

COMMUNICATIONS:**AIRPORTS SERVED:**

<u>AIRPORT ID</u>	<u>CITY</u>	<u>STATE</u>
HOU	HOUSTON	TX
BYY	BAY CITY	TX
HPY	BAYTOWN	TX
T00	ANAHUAC	TX
EFD	HOUSTON	TX
TME	HOUSTON	TX
AXH	HOUSTON	TX
T41	LA PORTE	TX
LVJ	HOUSTON	TX
54T	BAYTOWN	TX
GLS	GALVESTON	TX
SGR	HOUSTON	TX
LBX	ANGLETON/LAKE JACKSON	TX
IWS	HOUSTON	TX
ARM	WHARTON	TX

LOST COMMUNICATIONS PREFERENCES:**REMARKS:**

FEDERAL AVIATION ADMINISTRATION
FLIGHT STANDARDS SERVICE
STANDARD TERMINAL ARRIVAL (STAR)

Bearings, headings, courses, tracks and radials are magnetic. Elevations and altitudes are in feet, MSL. Altitudes are minimum altitudes unless otherwise indicated.
Ceilings are in feet above airport elevation. Distances are in nautical miles. Visibilities are in statute miles or feet RVR unless otherwise indicated.

Arrival Name	Number	STAR Computer Code	Superseded Number	Dated	Effective Date
WAPPL (RNAV)	SEVEN	WAPPL.WAPPL7	SIX	10/07/2021	12 JUN 2025

ADDITIONAL FLIGHT DATA:

DME/DME ASSESSMENT: SAT (RNP 2.0)
MAG VAR: HOU 03E/2015
CHART AT EMARR TERMINUS: HOU LDG RWY 4
CHART AT ALLLY TERMINUS: HOU LDG RWY 13L/R
CHART AT MAAHH TERMINUS: HOU LDG RWY 22
CHART AT UBETR TERMINUS: HOU LDG RWY 31L/R
CHART AT PLKTN TERMINUS: LDG 54T, ARM, AXH, BYY, EFD, GLS, HPY, IWS, LBX, LVJ, SGR, T00, T41, TME

FLIGHT INSPECTED BY:

RUSSELL ROSLEWSKI

ORGANIZATION:

AJF

DATE:

04/10/2025

Flight Inspected Signature:

Digitally signed by

CASIMIR L TABAKA

Apr 14, 2025

DEVELOPED BY:

CASIMIR TABAKA (BARBARA GORMAN)

AJV-A432

10/22/2024

Developed By Signature:

Digitally signed by

CASIMIR L TABAKA

Apr 14, 2025

Digitally signed by

CASIMIR L TABAKA

Apr 14, 2025

APPROVED BY:

CASIMIR TABAKA

AJV-A430

Approved By Signature:

CHANGES:

1. REMOVED SWB NAVAID FROM SAWMILL TRANSITION AND REPLACED WITH SWEUP WP.
2. ARRIVAL ROUTE DESCRIPTION: HOU - REMOVED 280K SPEED RESTRICTION AT CLWSN.
3. UPDATED ARRIVAL ROUTE DESCRIPTION: HOU RWY 4: ADDED CROSS EMARR AT 6000.
4. UPDATED ARRIVAL ROUTE DESCRIPTION: HOU RWY 13L/R: ADDED CROSS ALLLY AT 6000.
5. UPDATED ARRIVAL ROUTE DESCRIPTION: HOU RWY 22: ADDED CROSS MAAHH AT 7000.
6. ADDED HOLDING PATTERNS AT WAYPOINTS JMIKE AND CLWSN.
7. UPDATED HOLDING PATTERN BRWCK LEG LENGTH FROM 20NM TO 16NM LEGS.
8. UPDATED CHART NOTE: FROM "FOR TURBOJET AND TURBOPROP AIRCRAFT CAPABLE OF 280K OR GREATER ONLY" TO "JET AND TURBOPROP AIRCRAFT CAPABLE OF 280K OR GREATER ONLY."
9. UPDATED CHART NOTE: FROM "TURBOJET AIRCRAFT DESCEND VIA MACH NUMBER UNTIL INTERCEPTING 280K. MAINTAIN 280K UNTIL SLOWED BY STAR" TO "JET AIRCRAFT DESCEND VIA MACH NUMBER UNTIL 280K, IF UNABLE, ADVISE ATC."
10. UPDATED NOTE: FROM "ZEBBB TRANSITION ATC ASSIGNED ONLY" TO "ZEBBB TRANSITION DO NOT FILE - TO BE ASSIGNED BY ATC."
11. UPDATED NOTE: EXCEPT FOR AIRCRAFT DEPARTING SHV, FROM "PLANB TRANSITION IS ASSIGNED BY ATC ONLY. DO NOT FILE." TO "PLANB TRANSITION DO NOT FILE - TO BE ASSIGNED BY ATC."
12. MEAS UPDATED.
13. ADDED TERMINUS INFO TO ADDITIONAL FLIGHT DATA.
14. REMOVED AIRPORT NAMES FROM AIRPORTS SERVED ALONG WITH K IDENT ON 17.1 FORM.

FEDERAL AVIATION ADMINISTRATION
FLIGHT STANDARDS SERVICE
STANDARD TERMINAL ARRIVAL (STAR)

Bearings, headings, courses, tracks and radials are magnetic. Elevations and altitudes are in feet, MSL. Altitudes are minimum altitudes unless otherwise indicated.
Ceilings are in feet above airport elevation. Distances are in nautical miles. Visibilities are in statute miles or feet RVR unless otherwise indicated.

Arrival Name	Number	STAR Computer Code	Superseded Number	Dated	Effective Date
WAPPL (RNAV)	SEVEN	WAPPL.WAPPL7	SIX	10/07/2021	12 JUN 2025

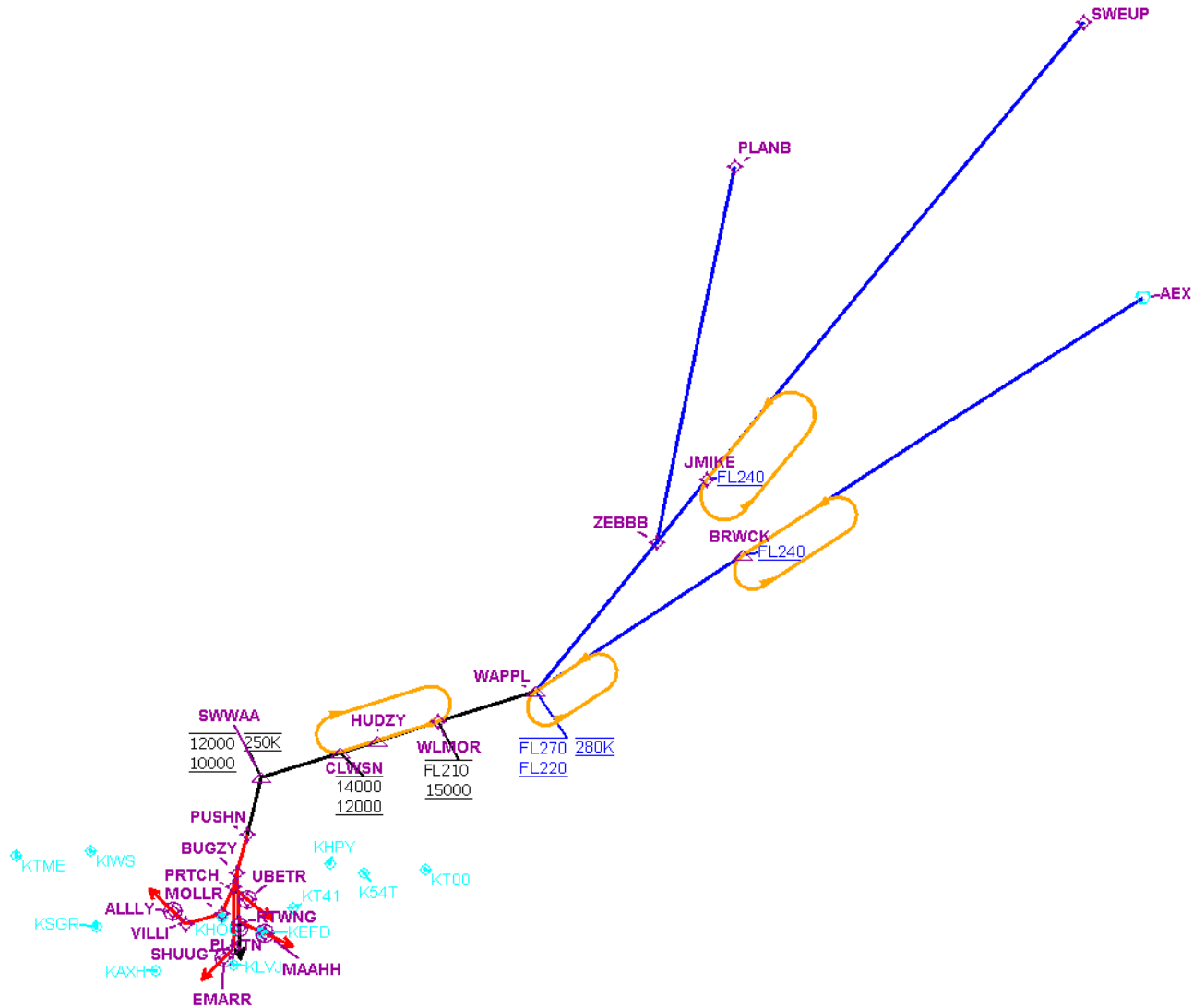
REASONS:

1. SWB DECOMMISSIONED.
2. SPEED RESTRICTION APPLIED AT WAPPL; NO RESTRICTION REQUIRED AT CLWSN PER FPT.
- 3/4/5. TERMINATION ALTITUDE ADDED TO DESCRIPTION IAW 8260.19J 4-5-2 E.
6. ATC REQUEST.
7. IAW 8260.3F TABLE 16-3-1.
8. IAW 8260.19J 4-5-12 D3(A).
9. IAW 8260.19J 4-5-2 F.
- 10/11. IAW 8260.19J 4-5-2 W.
12. MEAS AMENDED TO LOWEST ALTITUDE THAT WILL PASS A DME/DME SCREEN.
13. 8260.19J 4-5-2 H(2).
14. PER 8260.19J DOCUMENTATION STANDARDS.

FEDERAL AVIATION ADMINISTRATION
FLIGHT STANDARDS SERVICE
STANDARD TERMINAL ARRIVAL (STAR)

Bearings, headings, courses, tracks and radials are magnetic. Elevations and altitudes are in feet, MSL. Altitudes are minimum altitudes unless otherwise indicated.
Ceilings are in feet above airport elevation. Distances are in nautical miles. Visibilities are in statute miles or feet RVR unless otherwise indicated.

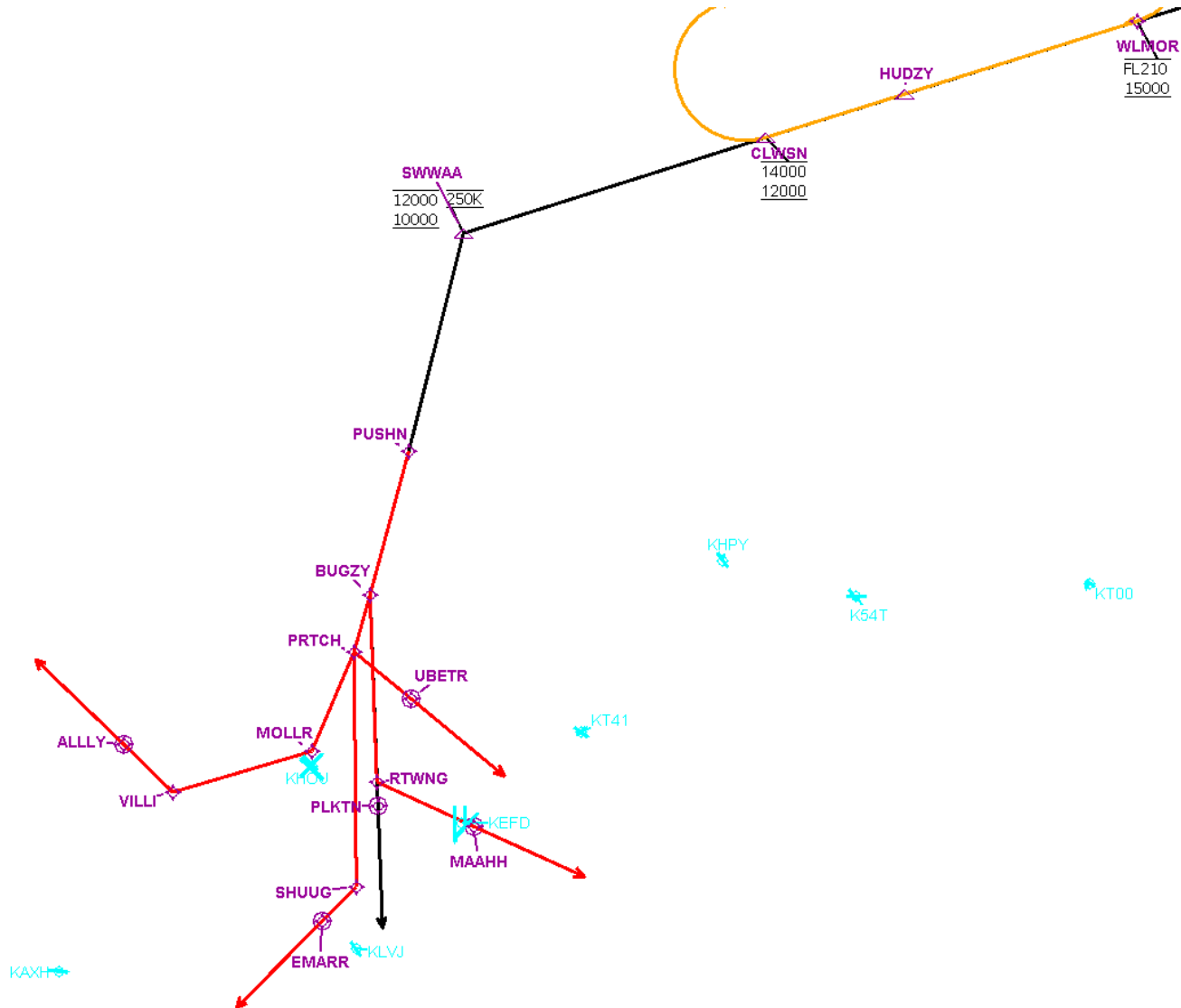
Arrival Name	Number	STAR Computer Code	Superseded Number	Dated	Effective Date
WAPPL (RNAV)	SEVEN	WAPPL.WAPPL7	SIX	10/07/2021	12 JUN 2025
Graphic Depiction 1					



FEDERAL AVIATION ADMINISTRATION
FLIGHT STANDARDS SERVICE
STANDARD TERMINAL ARRIVAL (STAR)

Bearings, headings, courses, tracks and radials are magnetic. Elevations and altitudes are in feet, MSL. Altitudes are minimum altitudes unless otherwise indicated.
Ceilings are in feet above airport elevation. Distances are in nautical miles. Visibilities are in statute miles or feet RVR unless otherwise indicated.

Arrival Name	Number	STAR Computer Code	Superseded Number	Dated	Effective Date
WAPPL (RNAV)	SEVEN	WAPPL.WAPPL7	SIX	10/07/2021	12 JUN 2025
Graphic Depiction 2					



FEDERAL AVIATION ADMINISTRATION
FLIGHT STANDARDS SERVICE
STAR (DATA RECORD)

Arrival Name WAPPL (RNAV)		Number SEVEN		STAR Computer Code WAPPL.WAPPL7			Superseded Number SIX			Dated 10/07/2021	Effective Date 12 JUN 2025
FIX/NAVAID	LAT/LONG	C	FO/FB	LEG TYPE	TC	DIST (NM)	ALTITUDE	SPEED	REMARKS		
En Route Transition											
AEX VORTAC	311524.23N / 0923003.50W	Y		IF					AEX.WAPPL7		
BRWCK	303513.63N / 0934221.71W	Y	FB	TF	237.51	73.99	AT/ABOVE FL240				
WAPPL	301354.84N / 0941950.33W	Y	FB	TF	236.89	38.76	FL220BFL270	AT 280K			
En Route Transition											
PLANB	313559.26N / 0934351.54W	Y		IF					PLANB.WAPPL7		
ZEBBB	303717.21N / 0935800.95W	Y	FB	TF	191.78	59.82					
WAPPL	301354.84N / 0941950.33W	Y	FB	TF	219.07	30.00	FL220BFL270	AT 280K			
En Route Transition											
SWEUP	315823.07N / 0924038.00W	Y		IF					SWEUP.WAPPL7		
JMIKE	304700.00N / 0934856.45W	Y	FB	TF	219.68	92.15	AT/ABOVE FL240				
ZEBBB	303717.21N / 0935800.95W	Y	FB	TF	218.95	12.45					
WAPPL	301354.84N / 0941950.33W	Y	FB	TF	219.07	30.00	FL220BFL270	AT 280K			
En Route Transition											
ZEBBB	303717.21N / 0935800.95W	Y		IF					ZEBBB.WAPPL7		
WAPPL	301354.84N / 0941950.33W	Y	FB	TF	219.07	30.00	FL220BFL270	AT 280K			
Common Route											
WAPPL	301354.84N / 0941950.33W	Y		IF			FL220BFL270	AT 280K	WAPPL.WAPPL7		
WLMOR	300910.71N / 0943730.73W	Y	FB	TF	252.93	16.03	15000BFL210				
HUDZY	300612.81N / 0944831.66W	Y	FB	TF	252.84	10.00					
CLWSN	300425.38N / 0945507.82W	Y	FB	TF	252.71	06.00	12000B14000				

**FEDERAL AVIATION ADMINISTRATION
FLIGHT STANDARDS SERVICE
STAR (DATA RECORD)**

Arrival Name WAPPL (RNAV)		Number SEVEN		STAR Computer Code WAPPL.WAPPL7		Superseded Number SIX		Dated 10/07/2021	Effective Date 12 JUN 2025
<u>FIX/NAVAID</u>	<u>LAT/LONG</u>	<u>C</u>	<u>FO/FB</u>	<u>LEG TYPE</u>	<u>TC</u>	<u>DIST (NM)</u>	<u>ALTITUDE</u>	<u>SPEED</u>	<u>REMARKS</u>
SWWAA	300031.45N / 0950925.36W	Y	FB	TF	252.65	13.00	10000B12000	AT 250K	
PUSHN	295137.79N / 0951201.76W	Y	FB	TF	194.33	09.16	AT/ABOVE 8000		
Common Route									
WAPPL	301354.84N / 0941950.33W	Y		IF			FL220BFL270	AT 280K	WAPPL.WAPPL7
WLMOR	300910.71N / 0943730.73W	Y	FB	TF	252.93	16.03	15000BFL210		
HUDZY	300612.81N / 0944831.66W	Y	FB	TF	252.84	10.00			
CLWSN	300425.38N / 0945507.82W	Y	FB	TF	252.71	06.00	12000B14000		
SWWAA	300031.45N / 0950925.36W	Y	FB	TF	252.65	13.00	10000B12000	AT 250K	
PUSHN	295137.79N / 0951201.76W	Y	FB	TF	194.33	09.16	AT/ABOVE 8000		
BUGZY	294544.12N / 0951352.56W	Y	FB	TF	195.29	06.10	AT/BELOW 10000		
PLKTN	293706.63N / 0951329.76W	Y	FO	TF	177.80	08.61	AT 8000		
K54T,KARM,KAXH, KBYY,KEFD,KGLS, KHPY,KIWS,KLBX, KLVJ,KSGR,KT00, KT41,KTME				FM	177.80				
Runway Transition									
PUSHN	295137.79N / 0951201.76W	Y		IF			AT/ABOVE 8000		
BUGZY	294544.12N / 0951352.56W	Y	FB	TF	195.29	06.10	AT/BELOW 10000		
PRTCH	294323.54N / 0951435.92W	Y	FB	TF	195.07	02.42	AT/BELOW 7000		
SHUUG	293349.40N / 0951430.28W	Y	FB	TF	179.51	09.55	AT 6000	AT 210K	
EMARR	293224.33N / 0951607.56W	Y	FO	TF	225.00	02.00	AT 6000		
KHOU:RWY 4				FM	225.00				

**FEDERAL AVIATION ADMINISTRATION
FLIGHT STANDARDS SERVICE
STAR (DATA RECORD)**

Arrival Name WAPPL (RNAV)		Number SEVEN		STAR Computer Code WAPPL.WAPPL7			Superseded Number SIX		Dated 10/07/2021	Effective Date 12 JUN 2025		
FIX/NAVAID	LAT/LONG	C	FO/FB	LEG TYPE	TC	DIST (NM)	ALTITUDE	SPEED	REMARKS			
Runway Transition												
PUSHN	295137.79N / 0951201.76W	Y		IF			AT/ABOVE 8000					
BUGZY	294544.12N / 0951352.56W	Y	FB	TF	195.29	06.10	AT/BELOW 10000					
PRTCH	294323.54N / 0951435.92W	Y	FB	TF	195.07	02.42	AT/BELOW 7000					
MOLLR	293920.23N / 0951635.83W	Y	FB	TF	203.29	04.40	AT 6000	AT 210K				
VILLI	293740.49N / 0952312.28W	Y	FB	TF	253.96	05.99						
ALLLY	293937.02N / 0952531.48W	Y	FO	TF	313.79	02.80	AT 6000					
KHOU:RWY 13L,RWY 13R				FM	313.79							
Runway Transition												
Runway Transition												
PUSHN	295137.79N / 0951201.76W	Y		IF			AT/ABOVE 8000					
BUGZY	294544.12N / 0951352.56W	Y	FB	TF	195.29	06.10	AT/BELOW 10000					
RTWNG	293806.48N / 0951332.39W	Y	FB	TF	177.80	07.61	AT 7000	AT 210K				
MAAHH	293617.42N / 0950856.16W	Y	FO	TF	114.30	04.40	AT 7000					
KHOU:RWY 22				FM	114.30							
Runway Transition												
Runway Transition												
PUSHN	295137.79N / 0951201.76W	Y		IF			AT/ABOVE 8000					
BUGZY	294544.12N / 0951352.56W	Y	FB	TF	195.29	06.10	AT/BELOW 10000					
PRTCH	294323.54N / 0951435.92W	Y	FB	TF	195.07	02.42	AT/BELOW 7000					
UBETR	294129.09N / 0951156.12W	Y	FO	TF	129.35	03.00	AT 6000	AT 210K				
KHOU:RWY 31L,RWY 31R				FM	129.35							