



U. S. Department of Transportation
Federal Aviation Administration

Charted Visual Flight Procedure (CVFP)

Bearings, courses, and radials are magnetic. Elevations and altitudes are in feet MSL. Altitudes are recommended unless otherwise indicated. Ceiling are in feet above airport elevation. Distances are in nautical miles except visibilities which are in statute miles.

CVFP Name
Juniper Visual Runway 23

Airport Name
Roberts Field (RDM)

City and State
Redmond, OR

VISUAL ARRIVAL ROUTE

FROM (Visual Landmarks)	TO (Visual Landmarks)	COURSE (if desired)	ALTITUDE (if needed) Show if for Class B
SW-W-N: CROOKED RIVER BRIDGE WEST OF SMITH ROCK	FROM 1 MILE NORTH OF HWY 126 AND 1 MILE EAST OF BURIED GAS LINE OVER THE JUNIPER TREES.	FROM CROOKED RIVER BRIDGE: 125 HDG 1 MILE EAST OF BURIED GAS LINE THEN FOLLOW N/S BURIED GAS LINE SOUTHBOUND.	
NE: BETWEEN SMITH ROCK AND POWELL BUTTES	FROM 1 MILE NORTH OF HWY 126 AND 1 MILE EAST OF BURIED GAS LINE OVER THE JUNIPER TREES.	FROM NE: REMAIN AT LEAST 1MILE NORTH OF HWY 126 AND PROCEED WESTBOUND TOWARD BURIED GAS LINE.	
E-S-W: SOUTH OF POWELL BUTTES OVER GOLF COURSE	FROM 1 MILE NORTH OF HWY 126 AND 1 MILE EAST OF BURIED GAS LINE OVER THE JUNIPER TREES.	FROM GOLF COURSE: 330 HDG AND REMAIN AT LEAST 1 MILE EAST AND PARALLEL TO N/S BURIED GAS LINE WHILE NORTHBOUND.	
FROM 1 MILE NORTH OF HWY 126 AND 1 MILE EAST OF BURIED GAS LINE OVER THE JUNIPER TREES	REDMOND AIRPORT	TURN FINAL WHILE OVER THE JUNIPER TREES.	

Weather Minimums: Ceiling 6400 Visibility 8

Notes: Radar Required. Procedure not authorized at night.

Supplementary Navaid/Waypoint Information and Additional Landmarks

I-RDM LOC, PAPI

Chart:

JUNIPER TREES
SMITH ROCK
CROOKED RIVER BRIDGE
PRINEVILLE AIRPORT
CROOKED RIVER
DESCHUTES RIVER
POWELL BUTTES
GOLF COURSE
BURIED GAS LINE
WATER CANAL
HWY 126
HWY 97
HWY 370
DSD VORTAC

Vertical Guidance Navaid and Angle LOC I-RDM (GS 3.0 DEGREES) PAPI P4L (GA 3.00 DEGREES)

Description of route (will not be printed on chart)

From Southwest-West-North proceed to Hwy 97/Crooked River Bridge and remain on south side of Smith Rock. From bridge fly 125 HDG until 1 mile east of buried gas line over the Juniper trees, then turn final.

From Northeast remain between Smith Rock and Powell Buttes until reaching 1 mile from the buried gas line and 1 mile north of Hwy 126 over the Juniper trees then turn final.

From East-South-Southwest proceed to golf course on south side of Powell Buttes. From golf course fly 330 HDG until reaching 1 mile from the buried gas line and 1 mile north of Hwy 126 over the Juniper trees then turn final.

Amdt. No. or Orig.

AMDT 2

Effective Date

08/20/2015

Supersedes

JUNIPER VISUAL RUNWAY 22

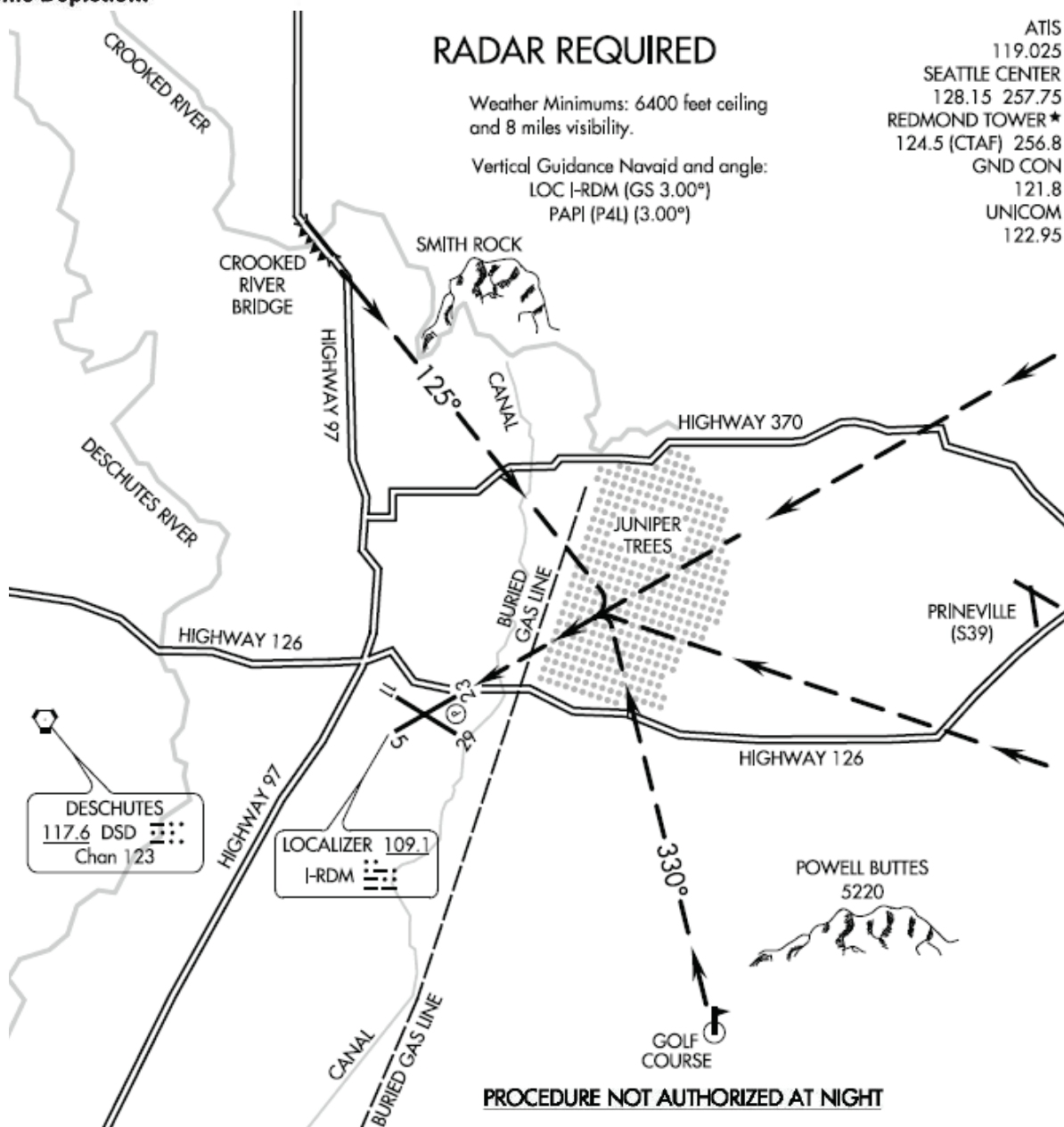
Amdt. No.

AMDT 1

Dated

02/09/2012

QUALITY
7
CHECKED

Graphic Depiction:**Communications to be charted:**

ATIS
 SEATTLE CENTER
 REDMOND TOWER (CTAF)
 GND CON
 UNICOM

Changes: 1. JUNIPER VISUAL RWY 22 changed to
 JUNIPER VISUAL RWY 23. 2. BODEY LOM
 removed. 3. Runway numbers changed from 4/22,
 10/28 to 5/23, 11/29.

QUALITY
 7
 CHECKED