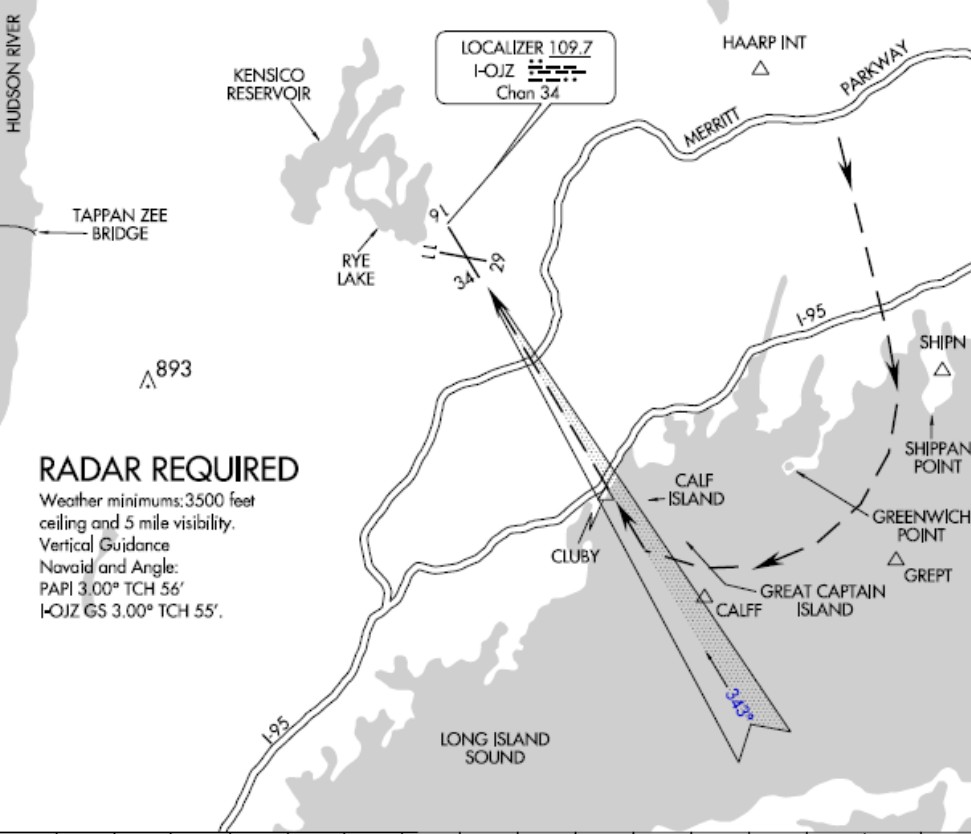


 <p>US Department of Transportation Federal Aviation Administration</p>		<p>Charted Visual Flight Procedures (CVFP)</p>		<p><i>Bearings, courses, and radials are magnetic. Elevations and altitudes are in feet MSL. Altitudes are recommended unless otherwise indicated. Ceilings are in feet above airport elevation. Distances are in nautical miles except visibilities which are in statute miles.</i></p>	
<p>CVFP Name</p> <p>SOUND VISUAL RWY 34</p>		<p>Airport Name</p> <p>WESTCHESTER COUNTY</p>		<p>City and State</p> <p>WHITE PLAINS, NY</p>	
<p>VISUAL ARRIVAL ROUTE</p>					
<p>FROM (visual landmarks)</p>		<p>TO (visual landmarks)</p>		<p>COURSE (if desired)</p>	
<p>RADAR VECTORS DOWNWIND/BASE EAST OF AIRPORT</p> <p>SOUTH OF SHIPPAN/GREENWICH POINT</p> <p>GREAT CAPTAIN ISLAND</p> <p>CALF ISLAND</p>		<p>SHIPPAN/GREENWICH POINT AREA</p> <p>GREAT CAPTAIN ISLAND</p> <p>CALF ISLAND</p> <p>HPN RWY 34</p>		<p>ALTITUDE (if needed) Show if for Class B</p>	
<p>Weather Minima: Ceiling <u>3500</u> Visibility <u>5</u></p> <p>NOTE: RADAR REQUIRED.</p> <p>WHEN CLEARED FOR A SOUND VISUAL APPROACH RWY 34 MAINTAIN 3000 FEET UNTIL SOUTH OF THE SHORELINE ON BASE LEG (2000 FEET WHEN AUTHORIZED BY ATC).</p> <p>FLY DEPICTED TRACK TO REMAIN OFFSHORE OF GREENWICH POINT.</p>				<p>Supplementary Navaid/Waypoint Information and Additional Landmarks</p> <p>Chart: SHIPPAN POINT; GREENWICH POINT; GREAT CAPTAIN ISLAND; CALF ISLAND; RYE LAKE; KENSICO RESERVOIR; HUDSON RIVER; TAPPEN ZEE BRIDGE; INTERSTATE 95; MERRITT PARKWAY; HAARP INTERSECTION; HPN RWY 34 LOCALIZER (I-OJZ); SHIPN; GREPT; CALFF; CLUBY</p>	
<p>Vertical Guidance Navaid and Angle: PAPI 3.00° TCH 55.5 RWY 34 LOCALIZER 109.7 GS 3.00° TCH 55</p>					
<p>Description of route (will not be printed on chart)</p> <p>HPN ARRIVALS VIA VALRE INTERSECTION (V157) ARE ROUTED/VECTORED PAST HAARP INTERSECTION TOWARD THE SHORELINE OF LONG ISLAND SOUND FOR A RIGHT BASE LEG. AIRCRAFT FLY AND DESCEND SOUTH OF THE SHORELINE AND WELL OUT OVER THE WATER FOR NOISE ABATEMENT, TO LAND RWY 34.</p>					
					
<p>Amdt. No. or Orig.</p> <p>1A</p>		<p>Effective Date</p> <p>07 DEC 2017</p>		<p>Supersedes</p> <p>SOUND VISUAL RWY 34</p>	
<p>Amdt. No.</p> <p>1</p>		<p>Dated</p> <p>20 DEC 2007</p>			

Graphic Depiction:

D-ATIS 133.8
 NEW YORK APP CON
 126.4 120.8 257.65
 WESTCHESTER TOWER ★
 118.575 (CTAF) 284.65
 GND CON
 121.825
 CLNC DEL
 127.25
 UNICOM 122.95
 CPDLC

**PROTOTYPE-NOT
 FOR NAVIGATION**



RADAR REQUIRED

Weather minimums: 3500 feet ceiling and 5 mile visibility.
 Vertical Guidance
 Navaid and Angle:
 PAPI 3.00° TCH 56'
 I-OJZ GS 3.00° TCH 55'.

1 NM	3	4	5	6	7	8	9	10	11	12	13	14	15	16
------	---	---	---	---	---	---	---	----	----	----	----	----	----	----

Communications to be charted:

ATIS, NEW YORK APP CON, WESTCHESTER TOWER, GND CON, CLNC DEL, UNICOM

CHANGES-REASONS:

1. AMENDED I-OJZ LOCALIZER COURSE FROM 342 DEGREES TO 343 DEGREES - KHPN/I-OJZ MAGVAR BEING UPDATED FROM 12W TO 13W.
2. AMENDED VASI 3.00/TCH 59 TO PAPI 3.00/TCH 56 IN VERTICAL GUIDANCE NAVAID AND ANGLE BLOCK - MATCH CURRENT AIRNAV DATA FOR RWY 34 VGS

	NAME (Typed and Signed), TITLE and ORGANIZATION		DATE
Developed By	PETER GUIMOND, AIS, AJV-5422 <i>Digitally signed by PETER R GUIMOND Jul 03, 2017</i>		07/03/2017
Approved	Reg. ATD	JULIE MORGAN, MANAGER, AJV-5420 <i>Digitally signed by JACOB POWERS Aug 03, 2017</i>	
	FIFO	PROCESSED IAW FLIGHT TEAM (AJW-333) MEMO, MAY 30, 2017 SUBJECT: FLIGHT INSPECTION REVIEW NOT REQUIRED	<i>Digitally signed by JACOB POWERS Aug 03, 2017</i>

