

FEDERAL AVIATION ADMINISTRATION  
FLIGHT STANDARDS SERVICE  
STANDARD TERMINAL ARRIVAL (STAR)

Bearings, headings, courses, tracks and radials are magnetic. Elevations and altitudes are in feet, MSL. Altitudes are minimum altitudes unless otherwise indicated.  
Ceilings are in feet above airport elevation. Distances are in nautical miles. Visibilities are in statute miles or feet RVR unless otherwise indicated.

Arrival Name	Number	STAR Computer Code	Superseded Number	Dated	Effective Date
BRNKO (RNAV)	FOUR	BRNKO.BRNKO4	THREE	05/16/2024	17 APR 25

TRANSITION ROUTES:

Transition Name	Transition Computer Codes	From FIX/NAVAID	To FIX/NAVAID	Course	Distance	MEA	MOCA	MAA	Crossing Altitudes / Fixes
ELWAY	ELWAY.BRNKO4	ELWAY	ELWAY						
			BRNKO	238.33	52.19	14000	7300		BETWEEN 14000 AND 16000
PYTNN	PYTNN.BRNKO4	PYTNN	PYTNN						
			ELWAY	239.90	38.03	14000	7300		
			BRNKO	238.33	52.19	14000	7300		BETWEEN 14000 AND 16000
SHRPE	SHRPE.BRNKO4	SHRPE	SHRPE						
			PYTNN	240.29	53.46	14000	7300		
			ELWAY	239.90	38.03	14000	7300		
			BRNKO	238.33	52.19	14000	7300		BETWEEN 14000 AND 16000

ARRIVAL ROUTE DESCRIPTION:

LANDING APA: FROM BRNKO ON TRACK 247.31/4.07 TO CROSS PICKK AT OR BELOW 14000, THEN ON TRACK 247.34/9.43 TO CROSS BLTZZ AT 12000 AND AT OR BELOW 250 KIAS, THEN ON TRACK 247.26/25.61 TO CROSS BWLIN AT 10000, THEN ON TRACK 189.26/14.19 TO CROSS REDZN AT 10000, THEN ON TRACK 176.15/5.33 TO CROSS PYDRT AT 9000, THEN ON TRACK 175.66/24.99 TO CROSS AAYES AT 9000, THEN ON TRACK 150.00. EXPECT RADAR VECTORS TO FINAL APPROACH COURSE.

LANDING BJC: FROM BRNKO ON TRACK 247.31/4.07/LEFT TURN TO CROSS PICKK AT OR BELOW 14000, THEN ON TRACK 247.34/9.43 TO CROSS BLTZZ AT 12000 AND AT OR BELOW 250 KIAS, THEN ON TRACK 247.26/25.61 TO CROSS BWLIN AT 10000, THEN ON TRACK 189.26/14.19 TO CROSS REDZN AT 10000, THEN ON TRACK 176.15/5.33 TO CROSS PYDRT AT 9000. EXPECT RNAV (GPS) RWY 12L APPROACH.

LANDING FNL/GXY: FROM BRNKO ON TRACK 247.31/4.07 TO CROSS PICKK AT OR BELOW 14000, THEN ON TRACK 247.34/9.43 TO CROSS BLTZZ AT 12000 AND AT OR BELOW 250 KIAS, THEN ON TRACK 246.83/12.05 TO CROSS ORRNG AT 9000, THEN ON TRACK 246.83. EXPECT RADAR VECTORS TO FINAL APPROACH COURSE.

LANDING LMO: FROM BRNKO ON TRACK 247.31/4.07 TO CROSS PICKK AT OR BELOW 14000, THEN ON TRACK 247.34/9.43 TO CROSS BLTZZ AT 12000 AND AT OR BELOW 250 KIAS, THEN ON TRACK 247.26/25.61 TO CROSS BWLIN AT 10000, THEN ON TRACK 189.26/14.19 TO CROSS REDZN AT 10000, THEN ON TRACK 176.15/5.00 TO CROSS HBALL AT 9000, THEN ON TRACK 176.15. EXPECT RADAR VECTORS TO FINAL APPROACH COURSE.

PBN REQUIREMENT NOTES:

RNAV 1 - GPS

EQUIPMENT REQUIREMENT NOTES:

RADAR REQUIRED

PROCEDURAL DATA NOTES:

NOTE: JET AIRCRAFT ONLY

NOTE: PYTNN AND ELWAY TRANSITIONS, ATC ASSIGNED ONLY.

NOTE: AIRCRAFT LANDING CENTENNIAL AIRPORT DO NOT FILE - TO BE ASSIGNED BY ATC.

NOTE: GPS REQUIRED.

FIXES AND/OR HOLDING PATTERNS:

FEDERAL AVIATION ADMINISTRATION  
FLIGHT STANDARDS SERVICE  
STANDARD TERMINAL ARRIVAL (STAR)

Bearings, headings, courses, tracks and radials are magnetic. Elevations and altitudes are in feet, MSL. Altitudes are minimum altitudes unless otherwise indicated.  
Ceilings are in feet above airport elevation. Distances are in nautical miles. Visibilities are in statute miles or feet RVR unless otherwise indicated.

Arrival Name	Number	STAR Computer Code	Superseded Number	Dated	Effective Date
<b>BRNKO (RNAV)</b>	<b>FOUR</b>	<b>BRNKO.BRNKO4</b>	<b>THREE</b>	<b>05/16/2024</b>	<b>17 APR 25</b>

**COMMUNICATIONS:**

CHART: DEN ARTCC

CHART: CENTENNIAL TOWER, METRO TOWER

**AIRPORTS SERVED:**

<u>AIRPORT ID</u>	<u>CITY</u>	<u>STATE</u>
APA	DENVER	CO
GXY	GREELEY	CO
FNL	FORT COLLINS/LOVELAND	CO
BJC	DENVER	CO
LMO	LONGMONT	CO

**LOST COMMUNICATIONS PREFERENCES:**

LANDING APA: FROM AAYES PROCEED TO LOWRE AND PROCEED ON THE RNAV (GPS) RWY 17L APPROACH.

LANDING BJC: FROM PYDRT PROCEED ON THE RNAV (GPS) RWY 12L APPROACH.

LANDING LMO: FROM HBALL PROCEED TO KAYOO THEN TO WOLTS AND PROCEED ON THE RNAV (GPS) RWY 29 APPROACH.

LANDING FNL/GXY: PROCEED TO GLL VOR/DME, AND PROCEED ON THE APPROACH.

**REMARKS:****ADDITIONAL FLIGHT DATA:**

DME/DME ASSESSMENT: UNSAT.

MAG VAR: BJC 09E/2015

CHART AT AAYES TERMINUS: LDG APA

CHART AT PYDRT TERMINUS: LDG BJC

CHART AT ORRNG TERMINUS: LDG FNL AND GXY

CHART AT HBALL TERMINUS: LDG LMO

**FLIGHT INSPECTED BY:**

JEREMY C LEIGHTON

**ORGANIZATION:**

AJF

**DATE:**

02/03/2025

Flight Inspected Signature:

Digitally signed by

**RAKE MCGRAW**

Feb 10, 2025

Digitally signed by

**RAKE MCGRAW**

Feb 10, 2025

Digitally signed by

**RAKE MCGRAW**

Feb 10, 2025

**DEVELOPED BY:**

DUSTIN HILLEY

AJV-A422

11/20/2024

Developed By Signature:

**APPROVED BY:**

RAKE MCGRAW

AJV-A422

Approved By Signature:

FEDERAL AVIATION ADMINISTRATION  
FLIGHT STANDARDS SERVICE  
STANDARD TERMINAL ARRIVAL (STAR)

Bearings, headings, courses, tracks and radials are magnetic. Elevations and altitudes are in feet, MSL. Altitudes are minimum altitudes unless otherwise indicated.  
Ceilings are in feet above airport elevation. Distances are in nautical miles. Visibilities are in statute miles or feet RVR unless otherwise indicated.

Arrival Name	Number	STAR Computer Code	Superseded Number	Dated	Effective Date
<b>BRNKO (RNAV)</b>	<b>FOUR</b>	<b>BRNKO.BRNKO4</b>	<b>THREE</b>	<b>05/16/2024</b>	<b>17 APR 25</b>

**CHANGES:**

1. ADDED PYTNN AND ELWAY EN ROUTE TRANSITIONS WITH NOTE: PYTNN AND ELWAY TRANSITIONS, ATC ASSIGNED ONLY.
2. REMOVED DEN APP CON FROM COMMUNICATIONS.
3. CHANGED ALL AIRPORTS FROM ICAO TO AIRPORT ID IN LOST COMMUNICATIONS AND ADDITIONAL FLIGHT DATA.
4. CHANGED LOST COMMUNICATIONS VERBIAGE FROM EXECUTE TO PROCEED ON.

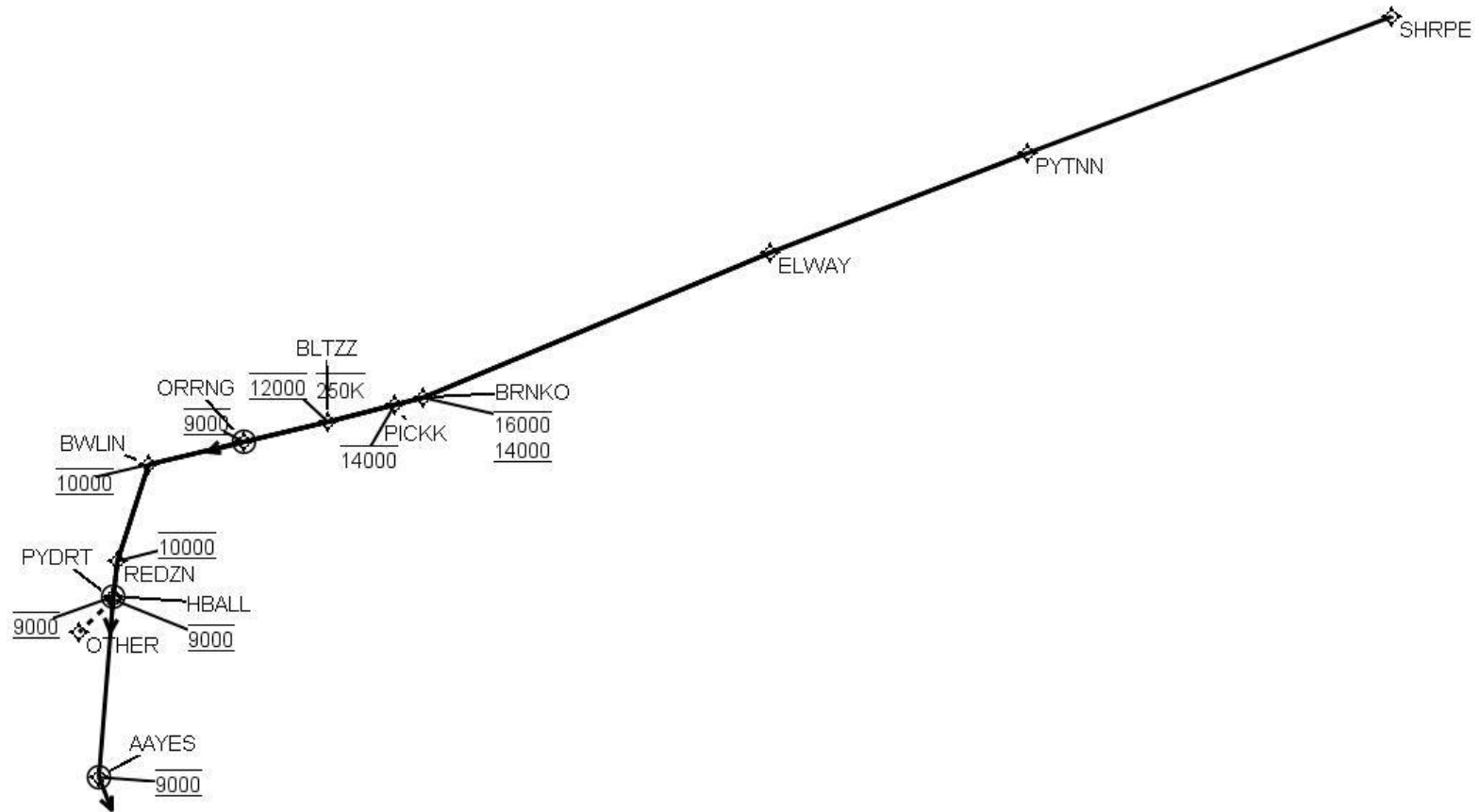
**REASONS:**

1. ATC REQUEST TO MITIGATE REROUTING AIRCRAFT AND RE-CLEARING THEM ON THE STAR DURING BUSY OR INCLEMENT WEATHER.
- 2-3. TO CONFORM TO 8260.46 DOCUMENTATION STANDARDS.
4. ATC REQUEST.

FEDERAL AVIATION ADMINISTRATION  
FLIGHT STANDARDS SERVICE  
STANDARD TERMINAL ARRIVAL (STAR)

Bearings, headings, courses, tracks and radials are magnetic. Elevations and altitudes are in feet, MSL. Altitudes are minimum altitudes unless otherwise indicated.  
Ceilings are in feet above airport elevation. Distances are in nautical miles. Visibilities are in statute miles or feet RVR unless otherwise indicated.

Arrival Name	Number	STAR Computer Code	Superseded Number	Dated	Effective Date
<b>BRNKO (RNAV)</b>	<b>FOUR</b>	<b>BRNKO.BRNKO4</b>	<b>THREE</b>	<b>05/16/2024</b>	<b>17 APR 25</b>
Graphic Depiction 1					



FEDERAL AVIATION ADMINISTRATION  
FLIGHT STANDARDS SERVICE  
STAR (DATA RECORD)

Arrival Name BRNKO (RNAV)	Number FOUR	STAR Computer Code BRNKO.BRNKO4		Superseded Number THREE		Dated 05/16/2024	Effective Date 17 APR 25		
<u>FIX/NAVAID</u>	<u>LAT/LONG</u>	<u>C</u>	<u>FO/FB</u>	<u>LEG TYPE</u>	<u>TC</u>	<u>DIST (NM)</u>	<u>ALTITUDE</u>	<u>SPEED</u>	<u>REMARKS</u>
En Route Transition									
ELWAY	405642.28N / 1030239.24W	Y		IF					ELWAY.BRNKO4
BRNKO	403617.35N / 1040552.87W	Y	FB	TF	247.33	52.19	14000B16000		
En Route Transition									
PYTNN	411033.70N / 1021549.64W	Y		IF					PYTNN.BRNKO4
ELWAY	405642.28N / 1030239.24W	Y	FB	TF	248.90	38.03			
BRNKO	403617.35N / 1040552.87W	Y	FB	TF	247.33	52.19	14000B16000		
En Route Transition									
SHRPE	412947.87N / 1010936.76W	Y		IF					SHRPE.BRNKO4
PYTNN	411033.70N / 1021549.64W	Y	FB	TF	249.29	53.46			
ELWAY	405642.28N / 1030239.24W	Y	FB	TF	248.90	38.03			
BRNKO	403617.35N / 1040552.87W	Y	FB	TF	247.33	52.19	14000B16000		
Common Route									
BRNKO	403617.35N / 1040552.87W	Y		IF			14000B16000		BRNKO.BRNKO4
PICKK	403519.41N / 1041104.24W	Y	FB	TF	256.31	04.07	AT/BELOW 14000		
BLTZZ	403305.10N / 1042305.26W	Y	FB	TF	256.34	09.43	AT 12000	AT/BELOW 250K	
BWLIN	402655.27N / 1045540.09W	Y	FB	TF	256.26	25.61	AT 10000		
REDZN	401326.13N / 1050128.25W	Y	FB	TF	198.26	14.19	AT 10000		
PYDRT	400807.62N / 1050205.63W	Y	FB	TF	185.15	05.33	AT 9000		
AAYES	394312.01N / 1050443.35W	Y	FO	TF	184.66	24.99	AT 9000		
KAPA				FM	159.00				
Common Route									
BRNKO	403617.35N / 1040552.87W	Y		IF			14000B16000		BRNKO.BRNKO4
PICKK	403519.41N / 1041104.24W	Y	FB	TF	256.31	04.07	AT/BELOW 14000		
BLTZZ	403305.10N / 1042305.26W	Y	FB	TF	256.34	09.43	AT 12000	AT/BELOW 250K	
BWLIN	402655.27N / 1045540.09W	Y	FB	TF	256.26	25.61	AT 10000		

FEDERAL AVIATION ADMINISTRATION  
FLIGHT STANDARDS SERVICE  
STAR (DATA RECORD)

Arrival Name BRNKO (RNAV)	Number FOUR	STAR Computer Code BRNKO.BRNKO4		Superseded Number THREE		Dated 05/16/2024	Effective Date 17 APR 25		
<u>FIX/NAVAID</u>	<u>LAT/LONG</u>	<u>C</u>	<u>FO/FB</u>	<u>LEG TYPE</u>	<u>TC</u>	<u>DIST (NM)</u>	<u>ALTITUDE</u>	<u>SPEED</u>	<u>REMARKS</u>
REDZN	401326.13N / 1050128.25W	Y	FB	TF	198.26	14.19	AT 10000		
PYDRT	400807.62N / 1050205.63W	Y	FB	TF	185.15	05.33	AT 9000		LANDING KBJC
Common Route									
BRNKO	403617.35N / 1040552.87W	Y		IF			14000B16000		BRNKO.BRNKO4
PICKK	403519.41N / 1041104.24W	Y	FB	TF	256.31	04.07	AT/BELOW 14000		
BLTZZ	403305.10N / 1042305.26W	Y	FB	TF	256.34	09.43	AT 12000	AT/BELOW 250K	
ORRNG	403006.91N / 1043824.52W	Y	FO	TF	255.83	12.05	AT 9000		
KFNL,KGXY				FM	255.83				
Common Route									
BRNKO	403617.35N / 1040552.87W	Y		IF			14000B16000		BRNKO.BRNKO4
PICKK	403519.41N / 1041104.24W	Y	FB	TF	256.31	04.07	AT/BELOW 14000		
BLTZZ	403305.10N / 1042305.26W	Y	FB	TF	256.34	09.43	AT 12000	AT/BELOW 250K	
BWLIN	402655.27N / 1045540.09W	Y	FB	TF	256.26	25.61	AT 10000		
REDZN	401326.13N / 1050128.25W	Y	FB	TF	198.26	14.19	AT 10000		
HBALL	400827.12N / 1050203.34W	Y	FO	TF	185.15	05.00	AT 9000		
KLMO				FM	185.15				