

FEDERAL AVIATION ADMINISTRATION
FLIGHT STANDARDS SERVICE
STANDARD TERMINAL ARRIVAL (STAR)

Bearings, headings, courses, tracks and radials are magnetic. Elevations and altitudes are in feet, MSL. Altitudes are minimum altitudes unless otherwise indicated.
Ceilings are in feet above airport elevation. Distances are in nautical miles. Visibilities are in statute miles or feet RVR unless otherwise indicated.

Arrival Name	Number	STAR Computer Code	Superseded Number	Dated	Effective Date
WADOL (RNAV)	FOUR	WADOL.WADOL4	THREE	11/03/2022	25JAN2024

TRANSITION ROUTES:

Transition Name	Transition Computer Codes	From FIX/NAVAID	To FIX/NAVAID	Course	Distance	MEA	MOCA	MAA	Crossing Altitudes / Fixes
MYBAD	MYBAD.WADOL4	MYBAD	MYBAD						
			WHATZ	225.95	05.00	9300	9300		
			WADOL	225.89	09.09	9300	9300		

ARRIVAL ROUTE DESCRIPTION:

FROM WADOL ON TRACK 213.27/41.63 TO CROSS MYYAA AT OR ABOVE 16000, THEN ON TRACK 222.52/18.23 TO CROSS SALLI AT OR ABOVE 11000, THEN ON TRACK 190.70/5.27 TO CROSS FMG VORTAC AT 10000, THEN ON HEADING 167.20. EXPECT ASSIGNED INSTRUMENT APPROACH RWY 35 L/R OR RADAR VECTORS TO FINAL APPROACH COURSE.

PBN REQUIREMENT NOTES:

RNAV 1 - GPS

EQUIPMENT REQUIREMENT NOTES:

RADAR REQUIRED

PROCEDURAL DATA NOTES:

NOTE: GPS REQUIRED.

FIXES AND/OR HOLDING PATTERNS:

CHART HOLDING AT MYYAA: HOLD NE, RT, 213.27 INBOUND, 10 NM LEGS.

COMMUNICATIONS:

CHART: RENO TOWER

CHART: NORCAL APP CON

AIRPORTS SERVED:

<u>AIRPORT ID</u>	<u>CITY</u>	<u>STATE</u>
KRNO	RENO	NV

LOST COMMUNICATIONS PREFERENCES:

REMARKS:

DO NOT CHART MOCA VALUE AT WHATZ/WADOL.

THIS STAR DOES NOT SERVE THE ILS 35L.

HOLDING IS FOR ZOA AIRSPACE ONLY AND NOT TO BE LOWER THAN FL200.



FEDERAL AVIATION ADMINISTRATION
FLIGHT STANDARDS SERVICE
STANDARD TERMINAL ARRIVAL (STAR)

Bearings, headings, courses, tracks and radials are magnetic. Elevations and altitudes are in feet, MSL. Altitudes are minimum altitudes unless otherwise indicated.
Ceilings are in feet above airport elevation. Distances are in nautical miles. Visibilities are in statute miles or feet RVR unless otherwise indicated.

Arrival Name	Number	STAR Computer Code	Superseded Number	Dated	Effective Date
WADOL (RNAV)	FOUR	WADOL.WADOL4	THREE	11/03/2022	25JAN2024

ADDITIONAL FLIGHT DATA:

DME/DME ASSESSMENT: UNSAT.
MAG VAR: KRNO 13E/2020.
CHART AT FMG VORTAC TERMINUS: KRNO LDG RWY 35L/R.
CHART: CAUTION: INTENSE GLIDER ACTIVITY TO FL180.

Digitally signed by
ROBERT G HAMILTON
Nov 28, 2023

FLIGHT INSPECTED BY:

THOMAS E MOLOKIE

ORGANIZATION:

FPO

DATE:

11/21/2023

Flight Inspected Signature: _____

DEVELOPED BY:

Kweku Donkor

*Digitally signed by***KWEKU DONKOR**

Aug 31, 2023

AJV-A433

6/5/2023

Developed By Signature: _____

APPROVED BY:

JOHNNIE BAKER

*Digitally signed by***ERIC N SUSKI**

Sep 13, 2023

AJV-A430

Approved By Signature: _____

CHANGES:

1. CHANGED COMMON ROUTE FROM MYBAD-WHATZ-WADOL-MYYAA-SALLI-FMG TO WADOL-MYYAA-SALLI-FMG.
2. ADDED ENROUTE TRANSITION MYBAD-WHATZ-WADOL.
3. ADDED CHART HOLDING AT MYYAA: HOLD NE, RT, 213.27 INBOUND, 10 NM LEGS.
4. ADDED PROCEDURAL DATA NOTE GPS REQUIRED.

REASONS:

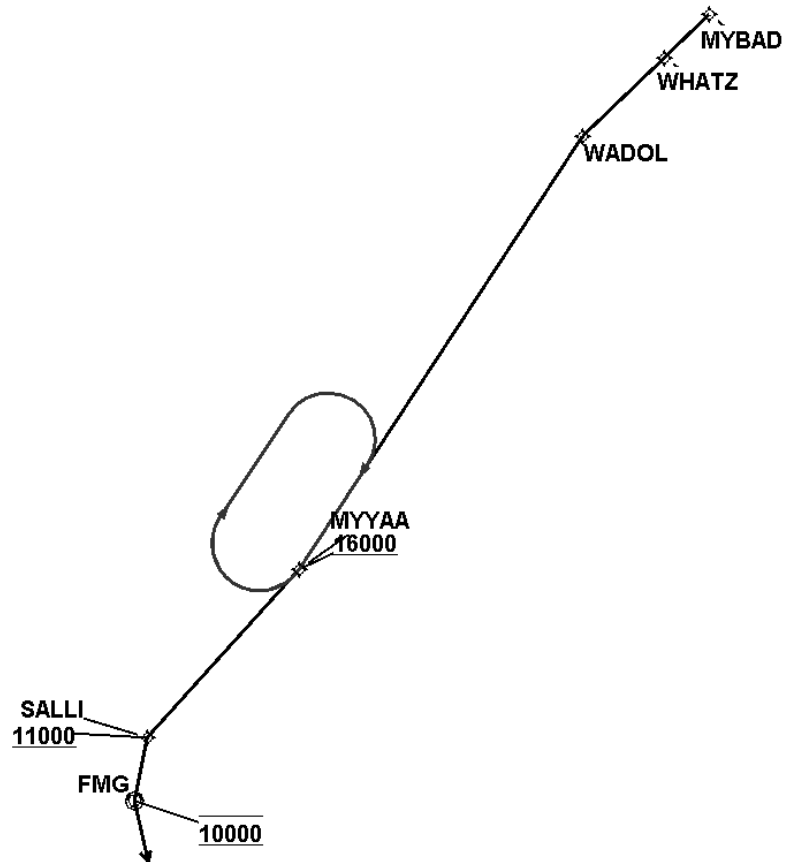
- 1-2. ATC REQUEST FOR DATA COMM COMPLIANCE.
3. ATC REQUEST.
4. IAW 8260.19I, PARA 4-5-3.

QUALITY
14
CHECKED

FEDERAL AVIATION ADMINISTRATION
FLIGHT STANDARDS SERVICE
STANDARD TERMINAL ARRIVAL (STAR)

Bearings, headings, courses, tracks and radials are magnetic. Elevations and altitudes are in feet, MSL. Altitudes are minimum altitudes unless otherwise indicated.
Ceilings are in feet above airport elevation. Distances are in nautical miles. Visibilities are in statute miles or feet RVR unless otherwise indicated.

Arrival Name	Number	STAR Computer Code	Superseded Number	Dated	Effective Date
WADOL (RNAV)	FOUR	WADOL.WADOL4	THREE	11/03/2022	25JAN2024
Graphic Depiction 1					



**FEDERAL AVIATION ADMINISTRATION
FLIGHT STANDARDS SERVICE
STAR (DATA RECORD)**

Arrival Name		Number		STAR Computer Code		Superseded Number		Dated	Effective Date
WADOL (RNAV)		FOUR		WADOL.WADOL4		THREE		11/03/2022	25JAN2024
<u>FIX/NAVAID</u>	<u>LAT/LONG</u>	<u>C</u>	<u>FO/FB</u>	<u>LEG TYPE</u>	<u>TC</u>	<u>DIST (NM)</u>	<u>ALTITUDE</u>	<u>SPEED</u>	<u>REMARKS</u>
En Route Transition									
MYBAD	402316.23N / 1182222.96W	Y		IF					MYBAD.WADOL4
WHATZ	402041.26N / 1182759.11W	Y	FB	TF	238.95	05.00			
WADOL	401558.86N / 1183809.10W	Y	FB	TF	238.89	09.09			
Common Route									
WADOL	401558.86N / 1183809.10W	Y		IF					WADOL.WADOL4
MYYAA	394704.09N / 1191710.52W	Y	FB	TF	226.27	41.63	AT/ABOVE 16000		
SALLI	393642.54N / 1193637.51W	Y	FB	TF	235.52	18.23	AT/ABOVE 11000		
FMG VORTAC	393152.60N / 1193921.87W	Y	FO	TF	203.70	05.27	AT 10000		
KRNO				VM	180.20				

