

FEDERAL AVIATION ADMINISTRATION
 FLIGHT STANDARDS SERVICE
 STANDARD TERMINAL ARRIVAL (STAR)

Bearings, headings, courses, tracks and radials are magnetic. Elevations and altitudes are in feet, MSL. Altitudes are minimum altitudes unless otherwise indicated. Distances are in nautical miles (NM). Graphic depictions attached.

Arrival Name SHAIN (RNAV)	Number TWO	STAR Computer Code SHAIN.SHAIN2	Superseded Number ONE	Dated 10/15/2015	Effective Date 5 NOV 2020
-------------------------------------	----------------------	---	---------------------------------	----------------------------	-------------------------------------

TRANSITION ROUTES:

Transition Name	Transition Computer Codes	From FIX/NAVAID	To FIX/NAVAID	Course	Distance	MEA	MOCA	MAA	Crossing Altitudes / Fixes
BFORD	BFORD.SHAIN2	BFORD	BFORD						AT/ABOVE FL220
			EZZRA	047.14	08.51	5000	2500	AT/ABOVE FL200	
			TRIDE	046.34	16.90	5000	2200	BETWEEN 15000 AND 16000	
			SHAIN	018.06	11.00	5000	2500	AT 12000	
CASHN	CASHN.SHAIN2	CASHN	CASHN						
			VINCA	043.74	30.64	5000	2000		
			MAROC	044.02	31.19	5000	2400	BETWEEN FL240 AND FL270	
			KELTS	014.60	23.71	5000	2300	AT/ABOVE FL200	
			FNBAR	010.60	09.71	5000	2100	BETWEEN 17000 AND FL200	
			TRIDE	012.80	11.06	5000	2200	BETWEEN 15000 AND 16000	
			SHAIN	018.06	11.00	5000	2500	AT 12000	
			DRAMS	018.06	11.00	5000	2500	AT 12000	
DRAMS	DRAMS.SHAIN2	DRAMS	DRAMS						
			RYELY	069.19	31.06	5000	2300	AT/ABOVE FL240	
			BFORD	069.36	19.05	5000	2500	AT/ABOVE FL220	
			EZZRA	047.14	08.51	5000	2500	AT/ABOVE FL200	
			TRIDE	046.34	16.90	5000	2200	BETWEEN 15000 AND 16000	
FORISTELL	FTZ.SHAIN2	FTZ VORTAC	FTZ VORTAC						
			GROOV	025.92	48.01	5000	2200		
			CASHN	027.29	34.73	5000	2200		
			VINCA	043.74	30.64	5000	2000		
			MAROC	044.02	31.19	5000	2400	BETWEEN FL240 AND FL270	
			KELTS	014.60	23.71	5000	2300	AT/ABOVE FL200	
			FNBAR	010.60	09.71	5000	2100	BETWEEN 17000 AND FL200	
			TRIDE	012.80	11.06	5000	2200	BETWEEN 15000 AND 16000	
KIRKSVILLE	IRK.SHAIN2	IRK VORTAC	IRK VORTAC						
			SHAIN	018.06	11.00	5000	2500	AT 12000	



FEDERAL AVIATION ADMINISTRATION
 FLIGHT STANDARDS SERVICE
 STANDARD TERMINAL ARRIVAL (STAR)

Bearings, headings, courses, tracks and radials are magnetic. Elevations and altitudes are in feet, MSL. Altitudes are minimum altitudes unless otherwise indicated. Distances are in nautical miles (NM). Graphic depictions attached.

Arrival Name	Number			STAR Computer Code	Superseded Number			Dated	Effective Date
SHAIN (RNAV)	TWO			SHAIN.SHAIN2	ONE			10/15/2015	5 NOV 2020
Transition Name	Transition Computer Codes	From FIX/NAVAID	To FIX/NAVAID	Course	Distance	MEA	MOCA	MAA	Crossing Altitudes / Fixes
			LOAMY	067.65	40.93	5000	3000		
			KEOKK	068.97	19.07	5000	2200		
			DRAMS	068.77	40.23	5000	2200		
			RYELY	069.19	31.06	5000	2300		AT/ABOVE FL240
			BFORD	069.36	19.05	5000	2500		AT/ABOVE FL220
			EZZRA	047.14	08.51	5000	2500		AT/ABOVE FL200
			TRIDE	046.34	16.90	5000	2200		BETWEEN 15000 AND 16000
			SHAIN	018.06	11.00	5000	2500		AT 12000
LOAMY	LOAMY.SHAIN2	LOAMY	LOAMY						
			KEOKK	068.97	19.07	5000	2200		
			DRAMS	068.77	40.23	5000	2200		
			RYELY	069.19	31.06	5000	2300		AT/ABOVE FL240
			BFORD	069.36	19.05	5000	2500		AT/ABOVE FL220
			EZZRA	047.14	08.51	5000	2500		AT/ABOVE FL200
			TRIDE	046.34	16.90	5000	2200		BETWEEN 15000 AND 16000
			SHAIN	018.06	11.00	5000	2500		AT 12000
PNTAC	PNTAC.SHAIN2	PNTAC	PNTAC						
			TRICH	354.80	23.47	5000	2300		
			TRIDE	314.17	23.48	5000	3100		BETWEEN 15000 AND 16000
			SHAIN	018.06	11.00	5000	2500		AT 12000
ST LOUIS	STL.SHAIN2	STL VORTAC	STL VORTAC						
			GROOV	356.28	34.44	5000	2200		
			CASHN	027.29	34.73	5000	2200		
			VINCA	043.74	30.64	5000	2000		
			MAROC	044.02	31.19	5000	2400		BETWEEN FL240 AND FL270
			KELTS	014.60	23.71	5000	2300		AT/ABOVE FL200
			FNBAR	010.60	09.71	5000	2100		BETWEEN 17000 AND FL200
			TRIDE	012.80	11.06	5000	2200		BETWEEN 15000 AND 16000



FEDERAL AVIATION ADMINISTRATION
 FLIGHT STANDARDS SERVICE
 STANDARD TERMINAL ARRIVAL (STAR)

Bearings, headings, courses, tracks and radials are magnetic. Elevations and altitudes are in feet, MSL. Altitudes are minimum altitudes unless otherwise indicated. Distances are in nautical miles (NM). Graphic depictions attached.

Arrival Name	Number			STAR Computer Code	Superseded Number			Dated	Effective Date
SHAIN (RNAV)	TWO			SHAIN.SHAIN2	ONE			10/15/2015	5 NOV 2020
Transition Name	Transition Computer Codes	From FIX/NAVAID	To FIX/NAVAID	Course	Distance	MEA	MOCA	MAA	Crossing Altitudes / Fixes
			SHAIN	018.06	11.00	5000	2500		AT 12000
TRIDE	TRIDE.SHAIN2	TRIDE	TRIDE						BETWEEN 15000 AND 16000
			SHAIN	018.06	11.00	5000	2500		AT 12000
VINCA	VINCA.SHAIN2	VINCA	VINCA						
			MAROC	044.02	31.19	5000	2400		BETWEEN FL240 AND FL270
			KELTS	014.60	23.71	5000	2300		AT/ABOVE FL200
			FNBAR	010.60	09.71	5000	2100		BETWEEN 17000 AND FL200
			TRIDE	012.80	11.06	5000	2200		BETWEEN 15000 AND 16000
			SHAIN	018.06	11.00	5000	2500		AT 12000
WELTS	WELTS.SHAIN2	WELTS	WELTS						
			MCDEE	053.43	51.61	5000	2300		
			CASHN	053.99	38.96	5000	2200		
			VINCA	043.74	30.64	5000	2000		
			MAROC	044.02	31.19	5000	2400		BETWEEN FL240 AND FL270
			KELTS	014.60	23.71	5000	2300		AT/ABOVE FL200
			FNBAR	010.60	09.71	5000	2100		BETWEEN 17000 AND FL200
			TRIDE	012.80	11.06	5000	2200		BETWEEN 15000 AND 16000
			SHAIN	018.06	11.00	5000	2500		AT 12000

ARRIVAL ROUTE DESCRIPTION:

FROM SHAIN ON TRACK 018.08/5.02 TO RAGSS, THEN ON TRACK 024.45/5.98 TO JUMPN, THEN ON TRACK 038.60/7.48 TO NUNWS, THEN ON TRACK 072.00. EXPECT RADAR VECTORS TO FINAL APPROACH COURSE.

PROCEDURAL DATA NOTES:

- NOTE: RADAR REQUIRED
- NOTE: RNAV 1
- NOTE: DME/DME/IRU OR GPS REQUIRED
- NOTE: STL, DRAMS, VINCA TRANSITIONS: ATC ASSIGNED ONLY.
- NOTE: PNTAC TRANSITION: FOR CMI, SPI, AND BMI DEPARTURES ONLY OR AS ASSIGNED BY ATC.

FIXES AND/OR HOLDING PATTERNS:

- CHART HOLDING AT BFORD: HOLD W, RT, 069.36 INBOUND, 11 NM LEGS.
- CHART HOLDING AT CASHN: HOLD SW, LT, 053.99 INBOUND, 15 NM LEGS.
- CHART HOLDING AT GROOV: HOLD S, RT, 356.28 INBOUND, 12 NM LEGS.



FEDERAL AVIATION ADMINISTRATION
 FLIGHT STANDARDS SERVICE
 STANDARD TERMINAL ARRIVAL (STAR)

Bearings, headings, courses, tracks and radials are magnetic. Elevations and altitudes are in feet, MSL. Altitudes are minimum altitudes unless otherwise indicated. Distances are in nautical miles (NM). Graphic depictions attached.

Arrival Name	Number	STAR Computer Code	Superseded Number	Dated	Effective Date
SHAIN (RNAV)	TWO	SHAIN.SHAIN2	ONE	10/15/2015	5 NOV 2020

CHART HOLDING AT LOAMY: HOLD W, RT, 067.65 INBOUND, 12 NM LEGS.
 CHART HOLDING AT MAROC: HOLD SW, LT, 044.02 INBOUND, 12 NM LEGS.
 CHART HOLDING AT MCDEE: HOLD SW, LT, 053.43 INBOUND, 16 NM LEGS.
 CHART HOLDING AT RYELY: HOLD W, RT, 069.19 INBOUND, 12 NM LEGS.
 CHART HOLDING AT TRIDE: HOLD SW, RT, 045.95 INBOUND, 9 NM LEGS.
 CHART HOLDING AT WELTS: HOLD SW, LT, 039.27 INBOUND, 16 NM LEGS.

COMMUNICATIONS:

ORD ATIS, CHICAGO APP CON.

AIRPORTS SERVED:

CHICAGO O'HARE INTL, CHICAGO, IL (KORD)

LOST COMMUNICATIONS PROCEDURE:

REMARKS:

ADDITIONAL FLIGHT DATA:

DME/DME ASSESSMENT: SAT (RNP 2.0)
 REFERENCE MAGNETIC VARIATION = KORD 03W/2010
 CHART AT NUNWS TERMINUS: LDG KORD

FLIGHT INSPECTED BY:

SCOTT WIEBE
 Name
 FICO
 Organization
 08/12/2020
 Date

Digitally signed by

DAVID DANNER

Sep 01, 2020
 Signature

DEVELOPED BY:

JOSEPH BOCIK, AIRSPACE AND PROCEDURES
 MANAGER
 Name
 CHICAGO ARTCC
 Organization
 04/02/2020
 Date

Digitally signed by

DAVID DANNER

Sep 01, 2020
 Signature

APPROVED BY:

PAT MULQUEEN, MANAGER
 Name
 AJV-A440
 Organization
 Date

Digitally signed by

DAVID DANNER

Sep 01, 2020
 Signature

CHANGES:

1. REPLACE BDF VOR/DME WITH BFORD WP.
2. ADD HOLDING AT WELTS.
3. REDUCE HOLDING PATTERN LEG LENGTH AT MCDEE TO 16 NM



FEDERAL AVIATION ADMINISTRATION
 FLIGHT STANDARDS SERVICE
 STANDARD TERMINAL ARRIVAL (STAR)

Bearings, headings, courses, tracks and radials are magnetic. Elevations and altitudes are in feet, MSL. Altitudes are minimum altitudes unless otherwise indicated. Distances are in nautical miles (NM). Graphic depictions attached.

Arrival Name	Number	STAR Computer Code	Superseded Number	Dated	Effective Date
SHAIN (RNAV)	TWO	SHAIN.SHAIN2	ONE	10/15/2015	5 NOV 2020

4. REMOVE ALTITUDE RESTRICTIONS AT DRAMS AND VINCA.
5. CHANGE ALTITUDE RESTRICTION AT EZZRA FROM AT OR ABOVE FL190 TO AT OR ABOVE FL200.
6. REMOVE PHLLP WP.
7. ADD PNTAC ENROUTE TRANSITION.
8. ADD DRAMS ENROUTE TRANSITION.
9. ADD CHART NOTE: DRAMS TRANSITION: ATC ASSIGNED ONLY.
10. ADD VINCA ENROUTE TRANSITION.
11. ADD CHART NOTE: VINCA TRANSITION: ATC ASSIGNED ONLY.
12. MOVE EZZRA 0.03 NM NE.
13. CHANGE ALTITUDE RESTRICTION AT TRIDE FROM 14000B16000 TO 15000B16000.
14. REMOVE JUKIC WP.
15. REMOVE GIBNS WP.
16. ADD NUNWS WP.
17. ADD FM LEG FROM NUNWS.
18. REMOVE TRICH TRANSITION
19. ADD CHART NOTE: PNTAC TRANSITION: FOR CMI, SPI, AND BMI DEPARTURES ONLY, OR AS ASSIGNED BY ATC.
20. REMOVED RECOMMENDED NAVAID MZZ VOR/DME.
21. REMOVED RWY TRANSITIONS FOR 9L/R, 10L/C/R AND REPLACED WITH COMMON ROUTE.
22. CHANGED GROOV HOLDING PATTERN LEG LENGTH FROM 10 NM TO 12 NM
23. CHANGED LOAMY HOLDING PATTERN LEG LENGTH FROM 10 NM TO 12 NM
24. CHANGED MAROC HOLDING PATTERN LEG LENGTH FROM 10 NM TO 12 NM
25. CHANGED RYLEY HOLDING PATTERN LEG LENGTH FROM 10 NM TO 12 NM

REASONS:

1. BDF BEING DECOMMISSIONED UNDER VOR MON.
2. IMPROVE FLOW CONTROL, REDUCE ATC VERBIAGE.
- 3, 5, 12, 13. CORRECT CRITERIA FAILURES.
- 4, 6, 14, 17, 20, 21. NO LONGER NEEDED.
- 7, 18, 19. MODIFY ROUTING FOR CMI, SPI, AND BMI DEPARTURES.
- 8-11. ENHANCE DATACOMM CAPABILITY WHEN AIRCRAFT ARE VECTORED OFF PROCEDURE.
- 15, 16, 17. DISCONNECT SIAPS FROM PROCEDURE.
- 22-25. IAW 8260.3D TABLE 17-3-1

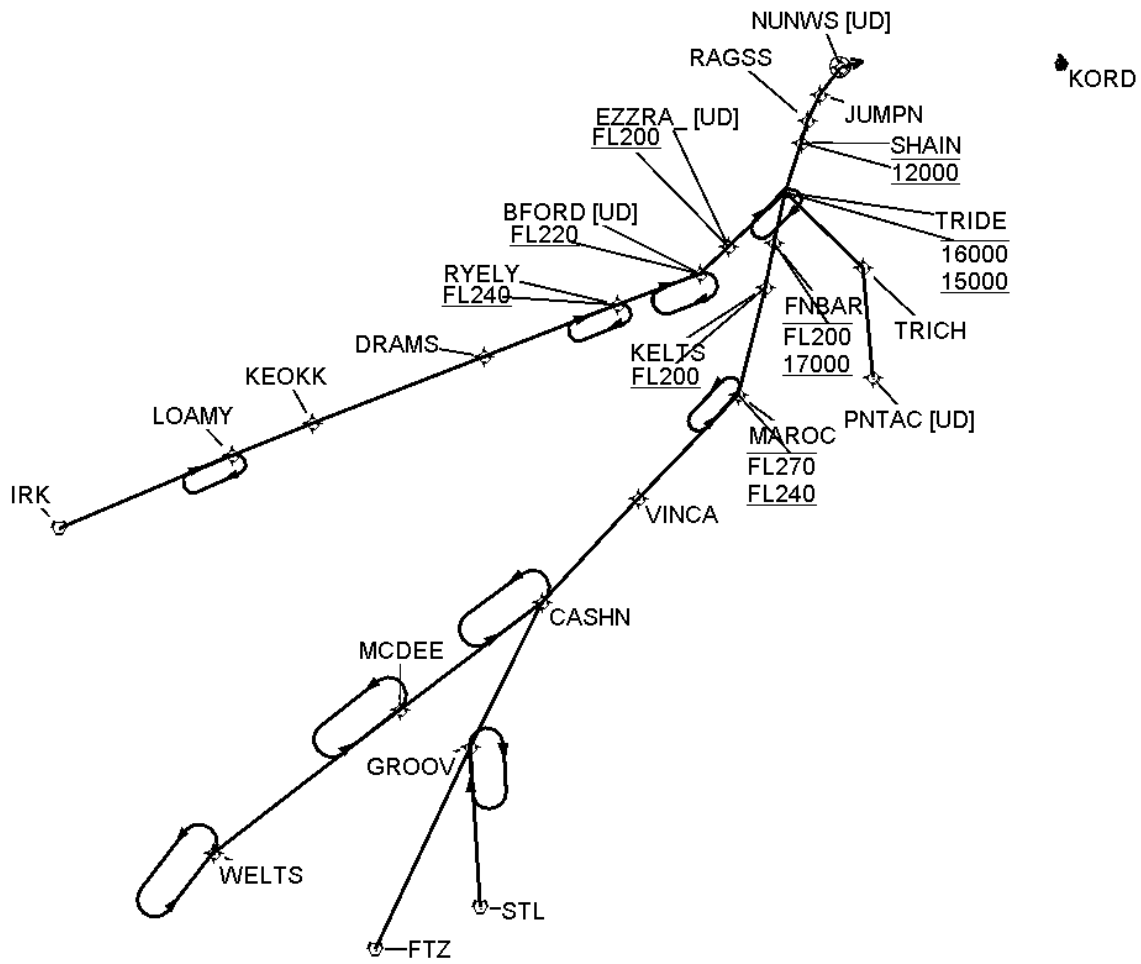


FEDERAL AVIATION ADMINISTRATION
 FLIGHT STANDARDS SERVICE
 STANDARD TERMINAL ARRIVAL (STAR)

Bearings, headings, courses, tracks and radials are magnetic. Elevations and altitudes are in feet, MSL. Altitudes are minimum altitudes unless otherwise indicated. Distances are in nautical miles (NM). Graphic depictions attached.

Arrival Name	Number	STAR Computer Code	Superseded Number	Dated	Effective Date
SHAIN (RNAV)	TWO	SHAIN.SHAIN2	ONE	10/15/2015	5 NOV 2020

Graphic Depiction 1



FEDERAL AVIATION ADMINISTRATION
 FLIGHT STANDARDS SERVICE
 STAR (DATA RECORD)

Arrival Name SHAIN (RNAV)	Number TWO	STAR Computer Code SHAIN.SHAIN2	Superseded Number ONE	Dated 10/15/2015	Effective Date 5 NOV 2020
-------------------------------------	----------------------	---	---------------------------------	----------------------------	-------------------------------------

FIX/NAVAID	LAT/LONG	C	FO/FB	LEG TYPE	TC	DIST (NM)	ALTITUDE	SPEED	REMARKS
En Route Transition									
BFORD	410936.33N / 0893514.68W	Y		IF			AT/ABOVE FL220		BFORD.SHAIN2
EZZRA	411542.70N / 0892723.18W	Y	FB	TF	044.14	08.51	AT/ABOVE FL200		
TRIDE	412759.43N / 0891157.67W	Y	FB	TF	043.34	16.90	15000B16000		
SHAIN	413837.00N / 0890809.00W	Y	FB	TF	015.06	11.00	AT 12000		

En Route Transition									
CASHN	395732.00N / 0901534.00W	Y		IF					CASHN.SHAIN2
VINCA	402043.25N / 0894924.67W	Y	FB	TF	040.74	30.64			
MAROC	404413.24N / 0892228.69W	Y	FB	TF	041.02	31.19	FL240BFL270		
KELTS	410727.23N / 0891610.22W	Y	FB	TF	011.60	23.71	AT/ABOVE FL200		
FNBAR	411705.00N / 0891428.00W	Y	FB	TF	007.60	09.71	17000BFL200		
TRIDE	412759.43N / 0891157.67W	Y	FB	TF	009.80	11.06	15000B16000		
SHAIN	413837.00N / 0890809.00W	Y	FB	TF	015.06	11.00	AT 12000		

En Route Transition									
DRAMS	404933.23N / 0903553.78W	Y		IF					DRAMS.SHAIN2
RYELY	410200.00N / 0895821.00W	Y	FB	TF	066.19	31.06	AT/ABOVE FL240		
BFORD	410936.33N / 0893514.68W	Y	FB	TF	066.36	19.05	AT/ABOVE FL220		
EZZRA	411542.70N / 0892723.18W	Y	FB	TF	044.14	08.51	AT/ABOVE FL200		
TRIDE	412759.43N / 0891157.67W	Y	FB	TF	043.34	16.90	15000B16000		
SHAIN	413837.00N / 0890809.00W	Y	FB	TF	015.06	11.00	AT 12000		

En Route Transition									
FTZ VORTAC	384139.60N / 0905816.57W	Y		IF					FTZ.SHAIN2
GROOV	392552.71N / 0903408.70W	Y	FB	TF	022.92	48.01			
CASHN	395732.00N / 0901534.00W	Y	FB	TF	024.29	34.73			
VINCA	402043.25N / 0894924.67W	Y	FB	TF	040.74	30.64			
MAROC	404413.24N / 0892228.69W	Y	FB	TF	041.02	31.19	FL240BFL270		
KELTS	410727.23N / 0891610.22W	Y	FB	TF	011.60	23.71	AT/ABOVE FL200		



FEDERAL AVIATION ADMINISTRATION
 FLIGHT STANDARDS SERVICE
 STAR (DATA RECORD)

Arrival Name SHAIN (RNAV)	Number TWO	STAR Computer Code SHAIN.SHAIN2	Superseded Number ONE	Dated 10/15/2015	Effective Date 5 NOV 2020
-------------------------------------	----------------------	---	---------------------------------	----------------------------	-------------------------------------

FIX/NAVAID	LAT/LONG	C	FO/FB	LEG TYPE	TC	DIST (NM)	ALTITUDE	SPEED	REMARKS
FNBAR	411705.00N / 0891428.00W	Y	FB	TF	007.60	09.71	17000BFL200		
TRIDE	412759.43N / 0891157.67W	Y	FB	TF	009.80	11.06	15000B16000		
SHAIN	413837.00N / 0890809.00W	Y	FB	TF	015.06	11.00	AT 12000		

En Route Transition

IRK VORTAC	400806.06N / 0923530.17W	Y		IF					IRK.SHAIN2
LOAMY	402528.31N / 0914703.84W	Y	FB	TF	064.65	40.93			
KEOKK	403312.25N / 0912413.20W	Y	FB	TF	065.97	19.07			
DRAMS	404933.23N / 0903553.78W	Y	FB	TF	065.77	40.23			
RYELY	410200.00N / 0895821.00W	Y	FB	TF	066.19	31.06	AT/ABOVE FL240		
BFORD	410936.33N / 0893514.68W	Y	FB	TF	066.36	19.05	AT/ABOVE FL220		
EZZRA	411542.70N / 0892723.18W	Y	FB	TF	044.14	08.51	AT/ABOVE FL200		
TRIDE	412759.43N / 0891157.67W	Y	FB	TF	043.34	16.90	15000B16000		
SHAIN	413837.00N / 0890809.00W	Y	FB	TF	015.06	11.00	AT 12000		

En Route Transition

LOAMY	402528.31N / 0914703.84W	Y		IF					LOAMY.SHAIN2
KEOKK	403312.25N / 0912413.20W	Y	FB	TF	065.97	19.07			
DRAMS	404933.23N / 0903553.78W	Y	FB	TF	065.77	40.23			
RYELY	410200.00N / 0895821.00W	Y	FB	TF	066.19	31.06	AT/ABOVE FL240		
BFORD	410936.33N / 0893514.68W	Y	FB	TF	066.36	19.05	AT/ABOVE FL220		
EZZRA	411542.70N / 0892723.18W	Y	FB	TF	044.14	08.51	AT/ABOVE FL200		
TRIDE	412759.43N / 0891157.67W	Y	FB	TF	043.34	16.90	15000B16000		
SHAIN	413837.00N / 0890809.00W	Y	FB	TF	015.06	11.00	AT 12000		

En Route Transition

PNTAC	404919.29N / 0884401.20W	Y		IF					PNTAC.SHAIN2
TRICH	411233.94N / 0884827.19W	Y	FB	TF	351.80	23.47			



FEDERAL AVIATION ADMINISTRATION
 FLIGHT STANDARDS SERVICE
 STAR (DATA RECORD)

Arrival Name SHAIN (RNAV)	Number TWO	STAR Computer Code SHAIN.SHAIN2	Superseded Number ONE	Dated 10/15/2015	Effective Date 5 NOV 2020
-------------------------------------	----------------------	---	---------------------------------	----------------------------	-------------------------------------

FIX/NAVAID	LAT/LONG	C	FO/FB	LEG TYPE	TC	DIST (NM)	ALTITUDE	SPEED	REMARKS
TRIDE	412759.43N / 0891157.67W	Y	FB	TF	311.17	23.48	15000B16000		
SHAIN	413837.00N / 0890809.00W	Y	FB	TF	015.06	11.00	AT 12000		

En Route Transition

STL VORTAC	385138.48N / 0902856.52W	Y		IF					STL.SHAIN2
GROOV	392552.71N / 0903408.70W	Y	FB	TF	353.28	34.44			
CASHN	395732.00N / 0901534.00W	Y	FB	TF	024.29	34.73			
VINCA	402043.25N / 0894924.67W	Y	FB	TF	040.74	30.64			
MAROC	404413.24N / 0892228.69W	Y	FB	TF	041.02	31.19	FL240BFL270		
KELTS	410727.23N / 0891610.22W	Y	FB	TF	011.60	23.71	AT/ABOVE FL200		
FNBAR	411705.00N / 0891428.00W	Y	FB	TF	007.60	09.71	17000BFL200		
TRIDE	412759.43N / 0891157.67W	Y	FB	TF	009.80	11.06	15000B16000		
SHAIN	413837.00N / 0890809.00W	Y	FB	TF	015.06	11.00	AT 12000		

En Route Transition

TRIDE	412759.43N / 0891157.67W	Y		IF			15000B16000		TRIDE.SHAIN2
SHAIN	413837.00N / 0890809.00W	Y	FB	TF	015.06	11.00	AT 12000		

En Route Transition

VINCA	402043.25N / 0894924.67W	Y		IF					VINCA.SHAIN2
MAROC	404413.24N / 0892228.69W	Y	FB	TF	041.02	31.19	FL240BFL270		
KELTS	410727.23N / 0891610.22W	Y	FB	TF	011.60	23.71	AT/ABOVE FL200		
FNBAR	411705.00N / 0891428.00W	Y	FB	TF	007.60	09.71	17000BFL200		
TRIDE	412759.43N / 0891157.67W	Y	FB	TF	009.80	11.06	15000B16000		
SHAIN	413837.00N / 0890809.00W	Y	FB	TF	015.06	11.00	AT 12000		

En Route Transition

WELTS	390022.96N / 0914622.15W	Y		IF					WELTS.SHAIN2
MCDEE	393306.00N / 0905456.00W	Y	FB	TF	050.43	51.61			
CASHN	395732.00N / 0901534.00W	Y	FB	TF	050.99	38.96			



FEDERAL AVIATION ADMINISTRATION
 FLIGHT STANDARDS SERVICE
 STAR (DATA RECORD)

Arrival Name SHAIN (RNAV)	Number TWO	STAR Computer Code SHAIN.SHAIN2	Superseded Number ONE	Dated 10/15/2015	Effective Date 5 NOV 2020
-------------------------------------	----------------------	---	---------------------------------	----------------------------	-------------------------------------

FIX/NAVAID	LAT/LONG	C	FO/FB	LEG TYPE	TC	DIST (NM)	ALTITUDE	SPEED	REMARKS
VINCA	402043.25N / 0894924.67W	Y	FB	TF	040.74	30.64			
MAROC	404413.24N / 0892228.69W	Y	FB	TF	041.02	31.19	FL240BFL270		
KELTS	410727.23N / 0891610.22W	Y	FB	TF	011.60	23.71	AT/ABOVE FL200		
FNBAR	411705.00N / 0891428.00W	Y	FB	TF	007.60	09.71	17000BFL200		
TRIDE	412759.43N / 0891157.67W	Y	FB	TF	009.80	11.06	15000B16000		
SHAIN	413837.00N / 0890809.00W	Y	FB	TF	015.06	11.00	AT 12000		

Common Route

SHAIN	413837.00N / 0890809.00W	Y		IF			AT 12000		SHAIN.SHAIN2
RAGSS	414328.03N / 0890624.34W	Y	FB	TF	015.08	05.02			
JUMPN	414902.22N / 0890328.81W	Y	FB	TF	021.45	05.98			
NUNWS	415507.00N / 0885739.02W	Y	FO	TF	035.60	07.48			
KORD				FM	069.00				

