

FEDERAL AVIATION ADMINISTRATION  
 FLIGHT STANDARDS SERVICE  
 STANDARD TERMINAL ARRIVAL (STAR)

Bearings, headings, courses, tracks and radials are magnetic. Elevations and altitudes are in feet, MSL. Altitudes are minimum altitudes unless otherwise indicated. Distances are in nautical miles (NM). Graphic depictions attached.

Arrival Name <b>WAALK (RNAV)</b>	Number <b>TWO</b>	STAR Computer Code <b>WAALK.WAALK2</b>	Superseded Number <b>ONE</b>	Dated <b>11/05/2020</b>	Effective Date <b>7 OCT 2021</b>
-------------------------------------	----------------------	---	---------------------------------	----------------------------	-------------------------------------

TRANSITION ROUTES:

Transition Name	Transition Computer Codes	From FIX/NAVAID	To FIX/NAVAID	Course	Distance	MEA	MOCA	MAA	Crossing Altitudes / Fixes
BUKYY	BUKYY.WAALK2	BUKYY	BUKYY						
			JAYBO	086.98	35.02	10000	2100		
			HEDGE	087.49	09.00	10000	1400		
			PEAPS	087.58	36.61	6000	1600		
			WNSTN	088.05	13.41	6000	1500		
			WAALK	088.23	11.59	6000	1500	AT 8000	
HYTRA	HYTRA.WAALK2	HYTRA	HYTRA						
			GARED	049.25	30.35	10000	1500		
			WNSTN	078.85	62.10	6000	1500		
			WAALK	088.23	11.59	6000	1500	AT 8000	
ZJAAY	ZJAAY.WAALK2	ZJAAY	ZJAAY						
			CBEAV	035.70	20.90	10000	1700		
			RADDS	038.55	18.54	10000	1700		
			BOORD	048.05	10.56	10000	1400		
			WAALK	053.36	28.04	6000	1700	AT 8000	

ARRIVAL ROUTE DESCRIPTION:

LANDING ALL AIRPORTS: FROM WAALK ON TRACK 038.81/8.00 TO CROSS CSINO AT 7000, THEN ON TRACK 038.86/21.68 TO HOGGS, THEN ON TRACK 052.33/7.33 TO CROSS PANZE AT 5000, THEN ON TRACK 029.52/8.86 TO CROSS FALON AT 5000. THEN ON TRACK 029.52. EXPECT RADAR VECTORS TO FINAL APPROACH COURSE.

PROCEDURAL DATA NOTES:

NOTE: HYTRA TRANSITION ATC ASSIGNED ONLY.

PBN REQUIREMENT NOTES:

RNAV 1-DME/DME/IRU OR GPS.

EQUIPMENT REQUIREMENT NOTES:

RADAR REQUIRED FOR NON-GPS EQUIPPED AIRCRAFT

FIXES AND/OR HOLDING PATTERNS:

CHART HOLDING AT BUKYY: HOLD W, RT, 068.08 INBOUND, 9 NM LEGS.

CHART HOLDING AT CYN VORTAC: HOLD NE, RT, 247.00 INBOUND, 4 NM LEGS.

CHART HOLDING AT JAYBO: HOLD W, RT, 087.49 INBOUND, 8 NM LEGS.

CHART HOLDING AT WAALK: HOLD SW, RT, 038.81 INBOUND, 7 NM LEGS.



FEDERAL AVIATION ADMINISTRATION  
 FLIGHT STANDARDS SERVICE  
 STANDARD TERMINAL ARRIVAL (STAR)

Bearings, headings, courses, tracks and radials are magnetic. Elevations and altitudes are in feet, MSL. Altitudes are minimum altitudes unless otherwise indicated. Distances are in nautical miles (NM). Graphic depictions attached.

Arrival Name	Number	STAR Computer Code	Superseded Number	Dated	Effective Date
<b>WAALK (RNAV)</b>	<b>TWO</b>	<b>WAALK.WAALK2</b>	<b>ONE</b>	<b>11/05/2020</b>	<b>7 OCT 2021</b>

COMMUNICATIONS:

CHART: ATLANTIC CITY APP CON  
 CHART: MC GUIRE APP CON

AIRPORTS SERVED:

FLYING W, LUMBERTON, NJ (KN14)  
 LAKEHURST MAXFIELD FLD, LAKEHURST, NJ (KNEL)  
 MC GUIRE FLD (JOINT BASE MC GUIRE DIX LAKEHURST), WRIGHTSTOWN, NJ (KWRI)  
 MONMOUTH EXEC, BELMAR/FARMINGDALE, NJ (KBLM)  
 OCEAN COUNTY, TOMS RIVER, NJ (KMJX)  
 SOUTH JERSEY RGNL, MOUNT HOLLY, NJ (KVAY)  
 TRENTON-ROBBINSVILLE, ROBBINSVILLE, NJ (KN87)

LOST COMMUNICATIONS PROCEDURE:

AFTER FALON, PROCEED DIRECT CYN AT 5000 FEET, HOLD AT CYN AS PUBLISHED, DESCEND IN HOLDING FROM 5000 TO 3000 FEET.

REMARKS:

ADDITIONAL FLIGHT DATA:

DME/DME ASSESSMENT: NOT CONDUCTED  
 REFERENCE MAGNETIC VARIATION = KWRI 12W/1985  
 CHART AT FALON TERMINUS: LDG KWRI, KN14, KNEL, KBLM, KMJX, KVAY, KN87.  
 CHART 230 KIAS HOLDING AT FIX BUKYY.

FLIGHT INSPECTED BY:

DANIEL KIRBY  
 Name

FICO  
 Organization

07/09/2021  
 Date

*Digitally signed by*

**ALLAN WILL**  
 Jul 13, 2021

Signature

DEVELOPED BY:

TOMMY BYRNS  
 Name

AJV-A423  
 Organization

03/03/2021  
 Date

*Digitally signed by*

**TOMMY BYRNS**  
 Mar 24, 2021

Signature

APPROVED BY:

MARLON ROBINSON  
 Name

AJV-A420  
 Organization

Date

*Digitally signed by*

**ALLAN WILL**  
 Jul 13, 2021

Signature

FEDERAL AVIATION ADMINISTRATION  
 FLIGHT STANDARDS SERVICE  
 STANDARD TERMINAL ARRIVAL (STAR)

Bearings, headings, courses, tracks and radials are magnetic. Elevations and altitudes are in feet, MSL. Altitudes are minimum altitudes unless otherwise indicated.  
 Distances are in nautical miles (NM). Graphic depictions attached.

Arrival Name	Number	STAR Computer Code	Superseded Number	Dated	Effective Date
<b>WAALK (RNAV)</b>	<b>TWO</b>	<b>WAALK.WAALK2</b>	<b>ONE</b>	<b>11/05/2020</b>	<b>7 OCT 2021</b>

CHANGES:

1. ADDED LAKEHURST FLD (KNEL), LAKEHURST, NJ.
2. REMOVED PROCEDURAL DATA NOTES: RADAR REQUIRED AND DME/DME/IRU OR GPS REQUIRED AND REPLACED WITH PBN AND EQUIPMENT REQUIREMENT NOTES.
3. ADDED LOST COMMUNICATION PROCEDURE.
4. CHANGED TERMINUS POINT FROM ZIGGI AT 5000 TO FALON AT 5000; VM CHANGED FROM 029.56 TO 029.52.
5. ADDED CYN VORTAC STAND-ALONE, CYN HOLDING.
6. REMOVED ZIGGI FROM STAR.

REASONS:

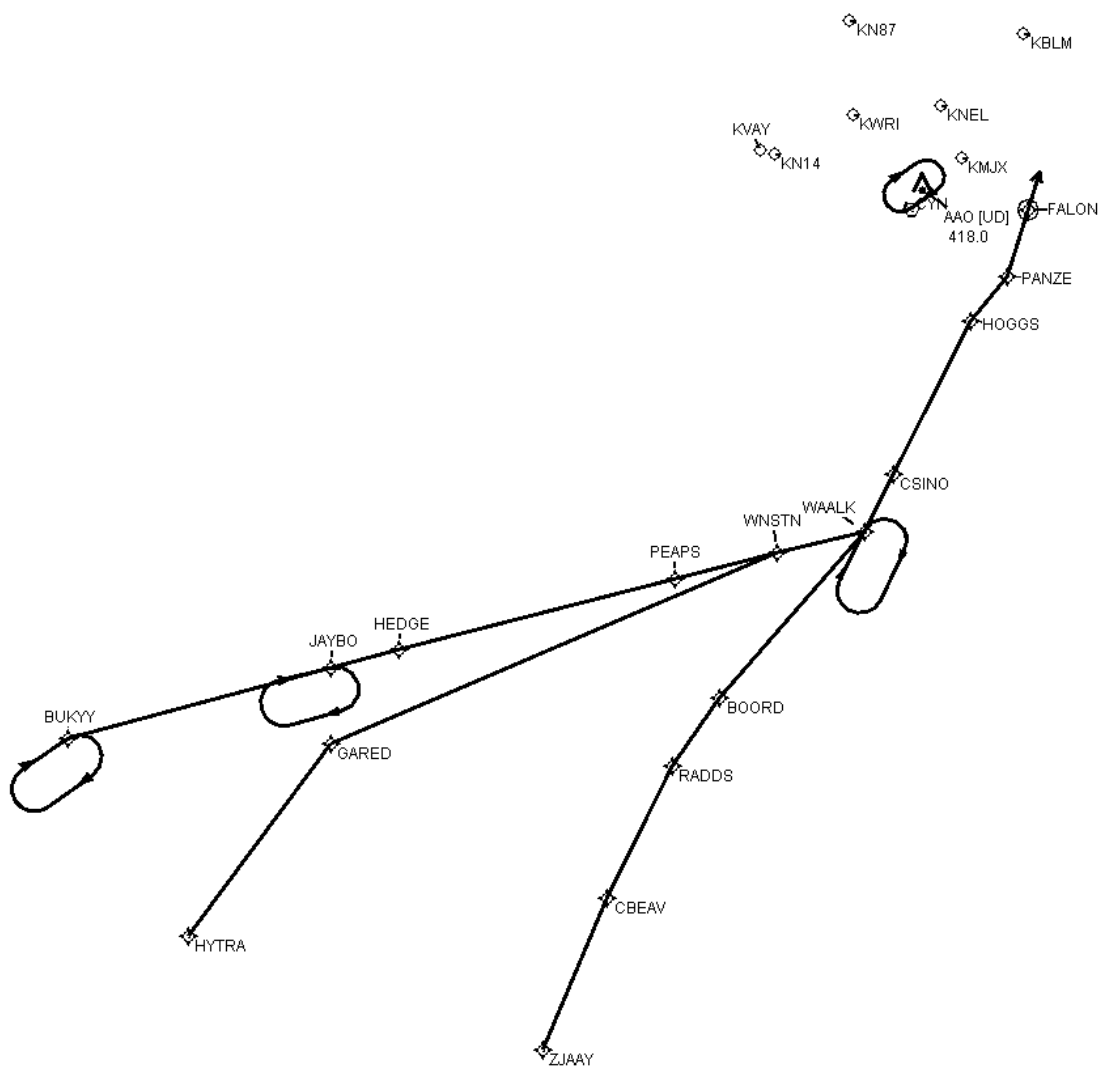
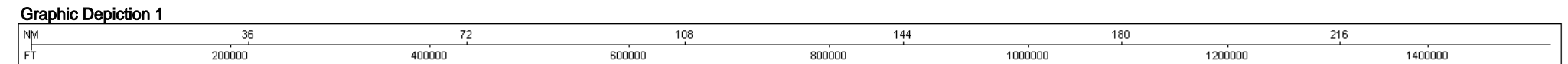
1. ATC REQUEST.
2. IAW 8260.19I, 4-5-3
- 3-5. HELP PREVENT INTERFERENCE WITH NEW YORK TRAFFIC.
6. NO LONGER NEEDED.



FEDERAL AVIATION ADMINISTRATION  
 FLIGHT STANDARDS SERVICE  
 STANDARD TERMINAL ARRIVAL (STAR)

Bearings, headings, courses, tracks and radials are magnetic. Elevations and altitudes are in feet, MSL. Altitudes are minimum altitudes unless otherwise indicated. Distances are in nautical miles (NM). Graphic depictions attached.

Arrival Name	Number	STAR Computer Code	Superseded Number	Dated	Effective Date
WALK (RNAV)	TWO	WALK.WALK2	ONE	11/05/2020	7 OCT 2021



FEDERAL AVIATION ADMINISTRATION  
FLIGHT STANDARDS SERVICE  
STAR (DATA RECORD)

Arrival Name <b>WAALK (RNAV)</b>	Number <b>TWO</b>	STAR Computer Code <b>WAALK.WAALK2</b>	Superseded Number <b>ONE</b>	Dated <b>11/05/2020</b>	Effective Date <b>7 OCT 2021</b>
-------------------------------------	----------------------	---	---------------------------------	----------------------------	-------------------------------------

FIX/NAVAID	LAT/LONG	C	FO/FB	LEG TYPE	TC	DIST (NM)	ALTITUDE	SPEED	REMARKS
<b>En Route Transition</b>									
BUKYY	384220.00N / 0764442.63W	Y		IF					BUKYY.WAALK2
JAYBO	385117.17N / 0760124.35W	Y	FB	TF	074.98	35.02			
HEDGE	385332.11N / 0755014.46W	Y	FB	TF	075.49	09.00			
PEAPS	390230.90N / 0750444.05W	Y	FB	TF	075.58	36.61			
WNSTN	390543.81N / 0744801.20W	Y	FB	TF	076.05	13.41			
WAALK	390828.66N / 0743332.93W	Y	FB	TF	076.23	11.59	AT 8000		
<b>En Route Transition</b>									
HYTRA	381731.91N / 0762449.80W	Y		IF					HYTRA.WAALK2
GARED	384140.41N / 0760121.96W	Y	FB	TF	037.25	30.35			
WNSTN	390543.81N / 0744801.20W	Y	FB	TF	066.85	62.10			
WAALK	390828.66N / 0743332.93W	Y	FB	TF	076.23	11.59	AT 8000		
<b>En Route Transition</b>									
ZJAAY	380309.95N / 0752634.27W	Y		IF					ZJAAY.WAALK2
CBEAV	382219.01N / 0751553.18W	Y	FB	TF	023.70	20.90			
RADDS	383854.80N / 0750518.48W	Y	FB	TF	026.55	18.54			
BOORD	384727.13N / 0745721.77W	Y	FB	TF	036.05	10.56			
WAALK	390828.66N / 0743332.93W	Y	FB	TF	041.36	28.04	AT 8000		
<b>Common Route</b>									
WAALK	390828.66N / 0743332.93W	Y		IF			AT 8000		WAALK.WAALK2
CSINO	391537.37N / 0742854.21W	Y	FB	TF	026.81	08.00	AT 7000		
HOGGS	393458.25N / 0741614.07W	Y	FB	TF	026.86	21.68			
PANZE	394033.58N / 0741005.45W	Y	FB	TF	040.33	07.33	AT 5000		
FALON	394900.73N / 0740637.80W	Y	FO	TF	017.52	08.86	AT 5000		
KBLM, KMJX, KN14, KN87, KNEL, KVAY, KWRI				FM	017.52				

