

FEDERAL AVIATION ADMINISTRATION
FLIGHT STANDARDS SERVICE
STANDARD TERMINAL ARRIVAL (STAR)

Bearings, headings, courses, tracks and radials are magnetic. Elevations and altitudes are in feet, MSL. Altitudes are minimum altitudes unless otherwise indicated.
Distances are in nautical miles (NM). Graphic depictions attached.

Arrival Name RNDRZ (RNAV)	Number TWO	STAR Computer Code RNDRZ.RNDRZ2	Superseded Number ONE	Dated 02/25/2021	Effective Date 19MAY2022				
TRANSITION ROUTES:									
Transition Name	Transition Computer Codes	From FIX/NAVAID	To FIX/NAVAID	Course	Distance	MEA	MOCA	MAA	Crossing Altitudes / Fixes
MISEN	MISEN.RNDRZ2	MISEN	MISEN						AT FL240
			TEDDE	035.67	10.80	FL190	7900		
			WATEV	037.28	08.53	FL190	7900		AT/ABOVE FL190
			TOETS	037.36	20.47	13000	7900		
			RNDRZ	037.54	03.93	13000	7900		BETWEEN 13000 AND FL190
NEEDLES	EED.RNDRZ2	EED VORTAC	EED VORTAC						
			ZELMA	260.65	42.31	FL190	10500		BETWEEN FL190 AND FL230
			MIYKE	326.47	33.29	13000	10500		
			RNDRZ	326.13	19.15	13000	10500		BETWEEN 13000 AND FL190
TWENTYNINE PALMS	TNP.RNDRZ2	TNP VORTAC	TNP VORTAC						
			JOTNU	032.00	17.51	FL190	10500		
			ZELMA	008.80	29.13	FL190	10500		BETWEEN FL190 AND FL230
			MIYKE	326.47	33.29	13000	10500		
			RNDRZ	326.13	19.15	13000	10500		BETWEEN 13000 AND FL190

ARRIVAL ROUTE DESCRIPTION:

LANDING RWY 1L/R: FROM RNDRZ ON TRACK 048.17/12.01 TO CROSS RUMLY BETWEEN 10000 AND 13000, THEN ON TRACK 048.29/7.00 TO CROSS BAUMM BETWEEN 8600 AND 11000, THEN ON TRACK 030.29/5.03 TO CROSS ROAMN AT 8000 AND AT 210 KIAS, THEN ON TRACK 030.29. EXPECT RADAR VECTORS TO FINAL APPROACH COURSE.

LANDING RWY 8L/R: FROM RNDRZ ON TRACK 048.17/12.01 TO CROSS RUMLY BETWEEN 10000 AND 13000, THEN ON TRACK 048.29/7.00 TO CROSS BAUMM BETWEEN 8600 AND 11000, THEN ON TRACK 006.28/7.98 TO CROSS YAGGR AT 8000 AND AT 210 KIAS, THEN ON TRACK 005.00. EXPECT RADAR VECTORS TO FINAL APPROACH COURSE.

LANDING RWY 26L/R, 19L/R: FROM RNDRZ ON TRACK 036.75/12.28 TO GRMMA, THEN ON TRACK 018.69/12.35 TO CROSS BUETY AT OR ABOVE 12500, THEN ON TRACK 018.56/7.50 TO CROSS ENNVY AT OR ABOVE 11000, THEN ON TRACK 082.92/12.02 TO CROSS REDQN AT OR ABOVE 9000 AND AT 210 KIAS, THEN ON TRACK 083.06/2.40 TO TWAFL, THEN ON TRACK 079.32/2.17 TO CROSS BERBN AT 8000 AND AT 210 KIAS, THEN ON TRACK 079.32. EXPECT RADAR VECTORS TO FINAL APPROACH COURSE.

PBN REQUIREMENT NOTES

RNAV 1 - DME/DME/IRU OR GPS

EQUIPMENT REQUIREMENT NOTES

RADAR REQUIRED

PROCEDURAL DATA NOTES:

NOTE: JET AIRCRAFT ONLY.

NEEDLES TRANSITION: DO NOT FILE - ASSIGNED BY ATC.



FEDERAL AVIATION ADMINISTRATION
FLIGHT STANDARDS SERVICE
STANDARD TERMINAL ARRIVAL (STAR)

Bearings, headings, courses, tracks and radials are magnetic. Elevations and altitudes are in feet, MSL. Altitudes are minimum altitudes unless otherwise indicated.
Distances are in nautical miles (NM). Graphic depictions attached.

Arrival Name	Number	STAR Computer Code	Superseded Number	Dated	Effective Date
RNDRZ (RNAV)	TWO	RNDRZ.RNDRZ2	ONE	02/25/2021	19MAY2022

FIXES AND/OR HOLDING PATTERNS:

CHART HOLDING AT WATEV: HOLD SW, RT, 037.28 INBOUND, 10 NM LEGS.

CHART HOLDING AT TOETS: HOLD SW, RT, 037.36 INBOUND, 10 NM LEGS.

COMMUNICATIONS:

CHART: LAS APP CON.

CHART: LAS TOWER.

AIRPORTS SERVED:

HARRY REID INTL, LAS VEGAS, NV (KLAS)

LOST COMMUNICATIONS PROCEDURE:

LANDING RUNWAY 8R: AT YAGGR EXECUTE RNAV (RNP) RWY 8R APPROACH, IF UNABLE, PROCEED VISUALLY TO INTERCEPT THE FINAL APPROACH COURSE; IF UNABLE, MAINTAIN 8000 PROCEED TO LAS VORTAC THEN MAINTAIN 7000 PROCEED TO BLD VORTAC AND EXECUTE ILS OR LOC RWY 26L APPROACH.

REMARKS:

FIX BAUMM UTILIZES 25 DEGREE BANK ANGLE COUPLED WITH 38.44 KNOT TAILWIND COMPONENT.

BAUMM TO YAGGR CONTROLLING OBST 5895 MSL.

ADDITIONAL FLIGHT DATA:

DME/DME ASSESSMENT: SAT (RNP 2.0)

REFERENCE MAGNETIC VARIATION = KLAS 11E/2020

CHART AT BERBN TERMINUS: KLAS LDG RWY 19L/R, 26L/R

CHART AT YAGGR TERMINUS: KLAS LDG RWY 8L/R

CHART AT ROAMN TERMINUS: KLAS RWY 1L/R

FLIGHT INSPECTED BY:

DANIEL C FAVORITE

Name

FIOG

Organization

12/01/2021

Date

Digitally signed by

ALLAN WILL

Mar 14, 2022

DEVELOPED BY:

MARK PHIPPS, LAS METROPLEX PROJECT MANAGER

Name

DENVER ARTCC

Organization

6/22/2021

Date

Digitally signed by

ALLAN WILL

Mar 14, 2022

APPROVED BY:

MARLON ROBINSON

Name

AJV-A420

Organization

Date

Digitally signed by

ALLAN WILL

Mar 14, 2022

Signature

FEDERAL AVIATION ADMINISTRATION
FLIGHT STANDARDS SERVICE
STANDARD TERMINAL ARRIVAL (STAR)

Bearings, headings, courses, tracks and radials are magnetic. Elevations and altitudes are in feet, MSL. Altitudes are minimum altitudes unless otherwise indicated.
Distances are in nautical miles (NM). Graphic depictions attached.

Arrival Name	Number	STAR Computer Code	Superseded Number	Dated	Effective Date
RNDRZ (RNAV)	TWO	RNDRZ.RNDRZ2	ONE	02/25/2021	19MAY2022

CHANGES:

1. CHANGED RUMLY RESTRICTION FROM AT/ABOVE 10000 TO BETWEEN 10000 AND 13000.
2. ADDED RESTRICTION TO BAUMM CROSS BETWEEN 8600 AND 11000
3. CHANGED RWY 8L/R VM LEG HEADING 004.58 TO FM LEG TRACK 005.00.
4. RAISED MEAS EED TO ZELMA, TNP TO ZELMA, AND MISEN TO WATEV FROM 13000 TO FL190.
5. CHANGED CROSSING RESTRICTION AT ZELMA FROM AT/ABOVE FL230 TO BETWEEN FL190 AND FL230.
6. ADDED CROSSING RESTRICTION AT WATEV AT/ABOVE FL190.
7. PROCEDURAL DATA NOTES: CHANGED "TURBOJET AIRCRAFT ONLY" TO "JET AIRCRAFT ONLY".
8. PROCEDURAL DATA NOTES: COMBINED "RNAV-1" AND "DME/DME/IRU OR GPS REQUIRED" AND MOVED NOTE TO PBN REQUIREMENTS SECTION.
9. COMBINED RWY 1L/R TRANSITIONS.
10. INCREASED MOCA VALUES IN TRANSITION ROUTES.

REASONS:

1. SEGREGATES FROM PROP DEPARTURES AND CONTAINS AIRCRAFT IN CORRECT ARRIVAL SECTOR.
2. SEGREGATES FROM TRAFFIC ON RADYR SID AND CONTAINS AIRCRAFT IN CORRECT ARRIVAL SECTOR.
3. ATC REQUEST. CONSISTENT WITH OTHER RNAV STAR RWY 8L/R TRANSITIONS.
4. NEEDED TO PROVIDE ADEQUATE DME COVERAGE FOR D/D/IRU NAVIGATION.
- 5-6. PRECLUDES DESCENT BELOW NEW MEA.
7. ATC REQUEST.
8. IAW 8260.19I.
9. ATC REQUEST.
10. COMPLY WITH AFS MEMO DATED 07/01/2021.

01/18/22: THIS IS AN UPDATED COPY OF THE FORM DEVELOPED ON 09/18/21.

1. CHANGED ALL MISEN MOCAS FROM 7100/6900 TO 7500 - IAW 8260.3E 2-2-7d(3).
2. CHANGED LOST COMM INSTRUCTIONS FOR RWY 8R FROM "LANDING RUNWAY 8R: AT YAGGR EXECUTE RNAV (RNP) RWY 8R APPROACH, IF UNABLE, PROCEED VISUALLY TO INTERCEPT THE FINAL APPROACH COURSE; IF UNABLE, MAINTAIN 7000 DIRECT LAS VORTAC THEN DIRECT BLD VORTAC AND EXECUTE ILS OR LOCALIZER RWY 26L APPROACH." TO "LANDING RUNWAY 8R: AT YAGGR EXECUTE RNAV (RNP) RWY 8R APPROACH, IF UNABLE, PROCEED VISUALLY TO INTERCEPT THE FINAL APPROACH COURSE; IF UNABLE, MAINTAIN 8000 PROCEED TO LAS VORTAC THEN PROCEED TO BLD VORTAC AT 7000 AND EXECUTE ILS OR LOC RWY 26L APPROACH" - IAW 8260.19I, PARA 4-5-2o(4). ALTITUDE YAGGR TO LAS RAISED TO 8000 BASED ON TERPS ANALYSIS.
3. REMARKS: DELETED DO NOT CHART MOCAS ABOVE FL190 - IAW 8260.19I AND AFS MEMO DATED 07/01/21.
4. REMARKS: DELETE MEAS FL190 NEEDED TO MITIGATE CRITICAL DMES AND INSURE ADEQUATE SIGNAL COVERAGE FOR DME/DME/IRU NAVIGATION - PRB RECOMMENDATION TO LOWER MEAS - LOWER DME ANALYSIS WILL BE ADDRESSED ON NEXT AMENDMENT.

FEDERAL AVIATION ADMINISTRATION
FLIGHT STANDARDS SERVICE
STANDARD TERMINAL ARRIVAL (STAR)

Bearings, headings, courses, tracks and radials are magnetic. Elevations and altitudes are in feet, MSL. Altitudes are minimum altitudes unless otherwise indicated.
Distances are in nautical miles (NM). Graphic depictions attached.

Arrival Name	Number	STAR Computer Code	Superseded Number	Dated	Effective Date
RNDRZ (RNAV)	TWO	RNDRZ.RNDRZ2	ONE	02/25/2021	19MAY2022

03/14/22: THIS IS AN UPDATED COPY OF THE FORM DEVELOPED ON 09/18/21.

1. LOST COMMS: CHANGED FROM "LANDING RUNWAY 8R: AT YAGGR EXECUTE RNAV (RNP) RWY 8R APPROACH, IF UNABLE, PROCEED VISUALLY TO INTERCEPT THE FINAL APPROACH COURSE; IF UNABLE, MAINTAIN 8000 PROCEED TO LAS VORTAC THEN PROCEED TO BLD VORTAC AT 7000 AND EXECUTE ILS OR LOC RWY 26L APPROACH" TO "LANDING RUNWAY 8R: AT YAGGR EXECUTE RNAV (RNP) RWY 8R APPROACH, IF UNABLE, PROCEED VISUALLY TO INTERCEPT THE FINAL APPROACH COURSE; IF UNABLE, MAINTAIN 8000 PROCEED TO LAS VORTAC THEN MAINTAIN 7000 PROCEED TO BLD VORTAC AND EXECUTE ILS OR LOC RWY 26L APPROACH" - AFS REQUEST.

2. LOST COMMS: DELETED INSTRUCTIONS FOR RWYS 1L AND 26L/R - AFS REQUEST; IAW 8260.19I, PARA 4-5-3.

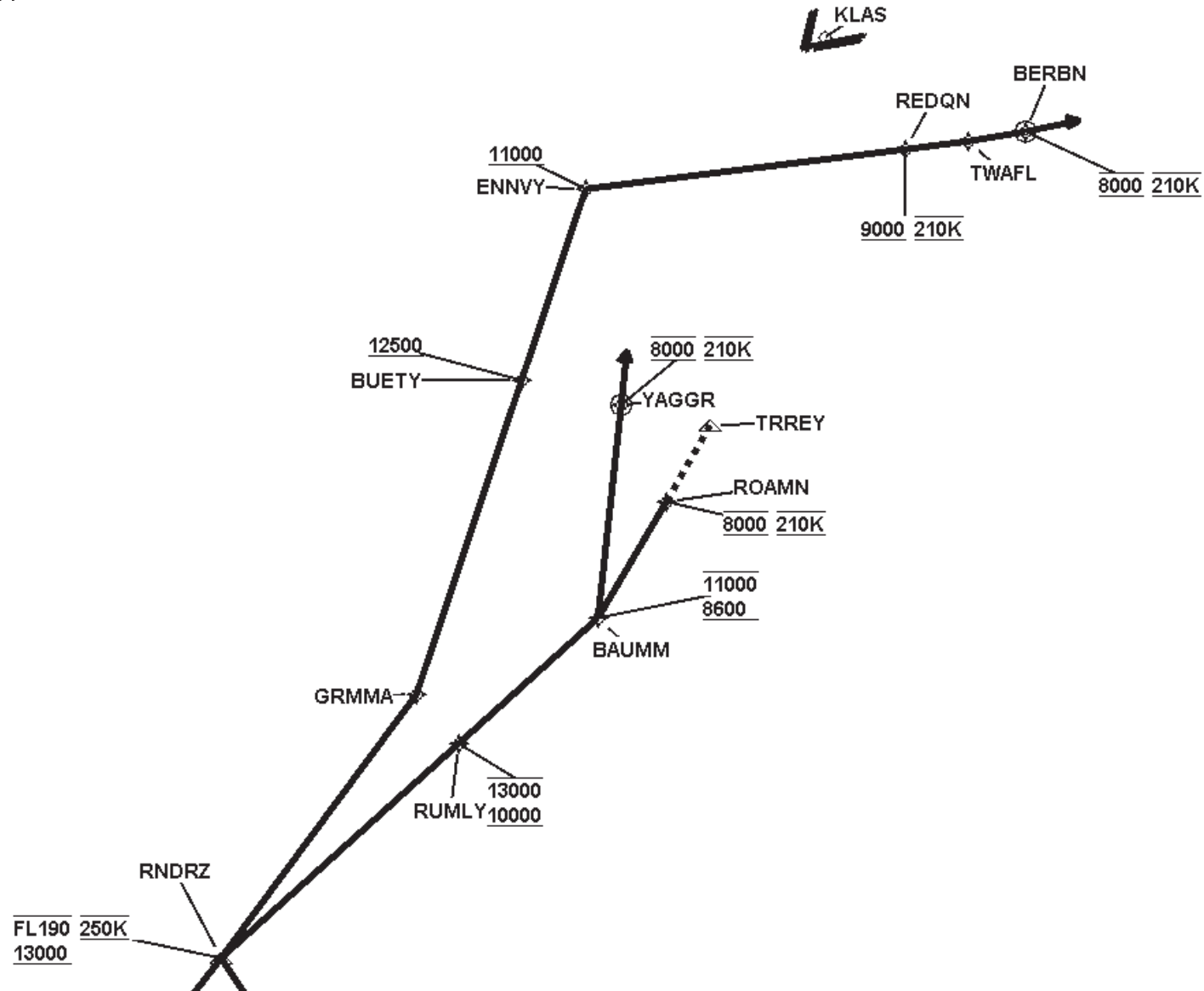
3. TRANSITIONS: MISEN TRANSITION MOCA DATA CHANGED FROM 7500 TO 7900; NEEDLES AND TWENTYNINE PALMS MOCAS CHANGED FROM 10000 TO 10500 - AFS REQUEST.

4. CORRECTED REMARK BAUMM TO YAGGR CONTROLLING OBST 5895 MSL. (8000 MIN ALT FOR SEGMENT).

FEDERAL AVIATION ADMINISTRATION
FLIGHT STANDARDS SERVICE
STANDARD TERMINAL ARRIVAL (STAR)

Bearings, headings, courses, tracks and radials are magnetic. Elevations and altitudes are in feet, MSL. Altitudes are minimum altitudes unless otherwise indicated.
Distances are in nautical miles (NM). Graphic depictions attached.

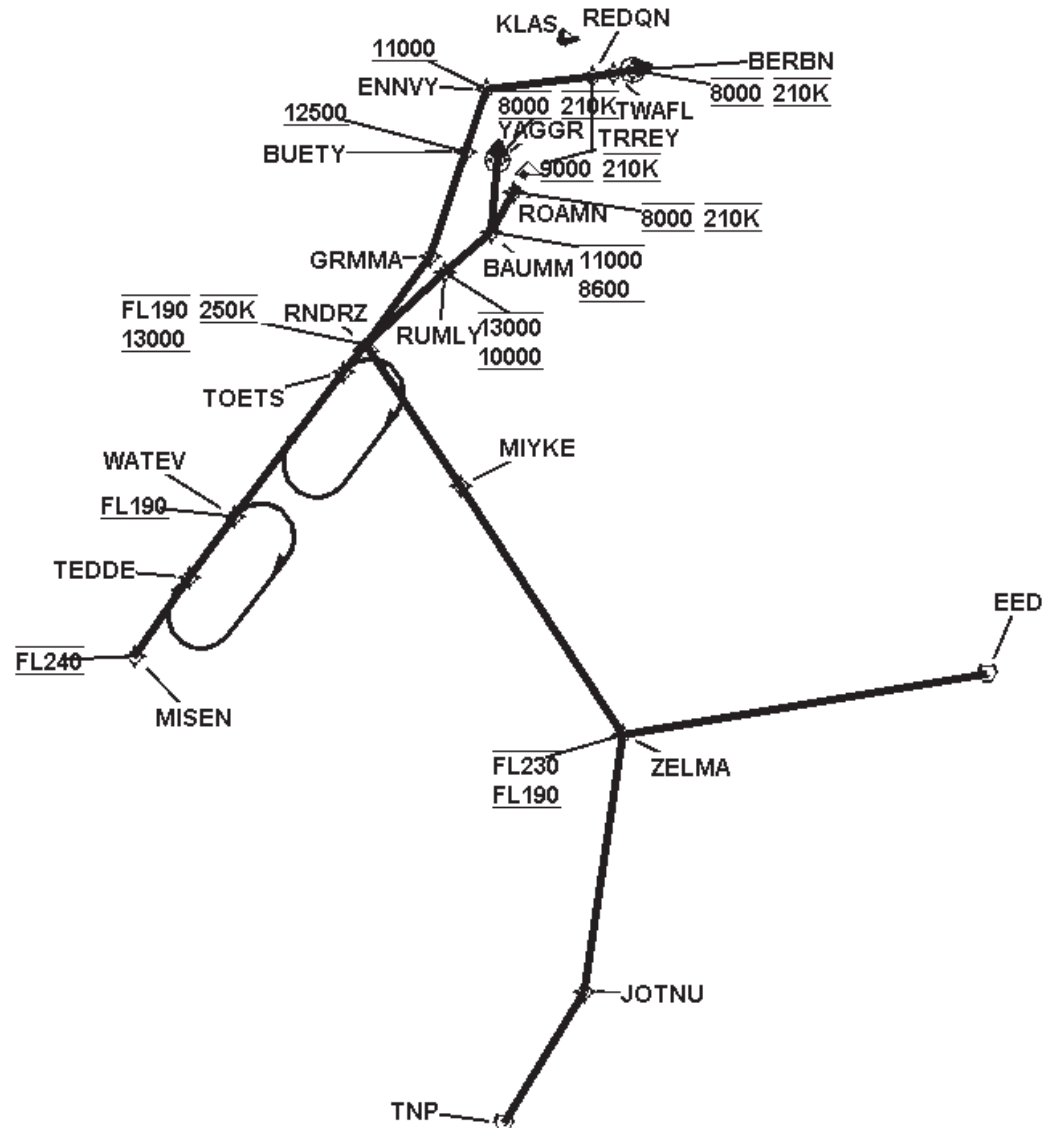
Arrival Name	Number	STAR Computer Code	Superseded Number	Dated	Effective Date
RNDRZ (RNAV)	TWO	RNDRZ.RNDRZ2	ONE	02/25/2021	19MAY2022
Graphic Depiction 1					



FEDERAL AVIATION ADMINISTRATION
FLIGHT STANDARDS SERVICE
STANDARD TERMINAL ARRIVAL (STAR)

Bearings, headings, courses, tracks and radials are magnetic. Elevations and altitudes are in feet, MSL. Altitudes are minimum altitudes unless otherwise indicated.
Distances are in nautical miles (NM). Graphic depictions attached.

Arrival Name	Number	STAR Computer Code	Superseded Number	Dated	Effective Date
RNDRZ (RNAV)	TWO	RNDRZ.RNDRZ2	ONE	02/25/2021	19MAY2022
Graphic Depiction 2					



FEDERAL AVIATION ADMINISTRATION
FLIGHT STANDARDS SERVICE
STAR (DATA RECORD)

Arrival Name RNDRZ (RNAV)	Number TWO	STAR Computer Code RNDRZ.RNDRZ2	Superseded Number ONE	Dated 02/25/2021	Effective Date 19MAY2022				
FIX/NAVAID	LAT/LONG	C	FO/FB	LEG TYPE	TC	DIST (NM)	ALTITUDE	SPEED	REMARKS
En Route Transition									
MISEN	350608.46N / 1162413.86W	Y		IF			AT FL240		MISEN.RNDRZ2
TEDDE	351333.39N / 1161438.54W	Y	FB	TF	046.67	10.80			
WATEV	351914.28N / 1160651.71W	Y	FB	TF	048.28	08.53	AT/ABOVE FL190		
TOETS	353250.24N / 1154806.97W	Y	FB	TF	048.36	20.47			
RNDRZ	353526.72N / 1154430.06W	Y	FB	TF	048.54	03.93	13000BFL190	AT 250K	
En Route Transition									
EED VORTAC	344557.62N / 1142826.77W	Y		IF					EED.RNDRZ2
ZELMA	344659.99N / 1151947.51W	Y	FB	TF	271.65	42.31	FL190BFL230		
MIYKE	351746.87N / 1153522.64W	Y	FB	TF	337.47	33.29			
RNDRZ	353526.72N / 1154430.06W	Y	FB	TF	337.13	19.15	13000BFL190	AT 250K	
En Route Transition									
TNP VORTAC	340644.04N / 1154611.66W	Y		IF					TNP.RNDRZ2
JOTNU	341933.11N / 1153146.29W	Y	FB	TF	043.00	17.51			
ZELMA	344659.99N / 1151947.51W	Y	FB	TF	019.80	29.13	FL190BFL230		
MIYKE	351746.87N / 1153522.64W	Y	FB	TF	337.47	33.29			
RNDRZ	353526.72N / 1154430.06W	Y	FB	TF	337.13	19.15	13000BFL190	AT 250K	
Runway Transition									
RNDRZ	353526.72N / 1154430.06W	Y		IF			13000BFL190	AT 250K	
RUMLY	354135.88N / 1153150.45W	Y	FB	TF	059.17	12.01	10000B13000		
BAUMM	354510.45N / 1152426.79W	Y	FB	TF	059.29	07.00	8600B11000		
ROAMN	354857.47N / 1152021.90W	Y	FO	TF	041.29	05.03	AT 8000	AT 210K	
KLAS:RWY 1L,RWY 1R				FM	041.29				
Runway Transition									
RNDRZ	353526.72N / 1154430.06W	Y		IF			13000BFL190	AT 250K	

FEDERAL AVIATION ADMINISTRATION
FLIGHT STANDARDS SERVICE
STAR (DATA RECORD)

Arrival Name	Number	STAR Computer Code	Superseded Number	Dated	Effective Date
RNDRZ (RNAV)	TWO	RNDRZ.RNDRZ2	ONE	02/25/2021	19MAY2022

FIX/NAVAID	LAT/LONG	C	FO/FB	LEG TYPE	TC	DIST (NM)	ALTITUDE	SPEED	REMARKS
RUMLY	354135.88N / 1153150.45W	Y	FB	TF	059.17	12.01	10000B13000		
BAUMM	354510.45N / 1152426.79W	Y	FB	TF	059.29	07.00	8600B11000		
YAGGR	355248.54N / 1152131.70W	Y	FO	TF	017.28	07.98	AT 8000	AT 210K	
KLAS:RWY 8L,RWY 8R				FM	016.00				

Runway Transition									
RNDRZ	353526.72N / 1154430.06W	Y		IF			13000BFL190	AT 250K	
GRMMA	354342.13N / 1153320.39W	Y	FB	TF	047.75	12.28			
BUETY	355426.59N / 1152548.58W	Y	FB	TF	029.69	12.35	AT/ABOVE 12500		
ENNVY	360058.51N / 1152114.95W	Y	FB	TF	029.56	07.50	AT/ABOVE 11000		
REDQN	360008.26N / 1150628.33W	Y	FB	TF	093.92	12.02	AT/ABOVE 9000	AT 210K	
TWAFI	355958.01N / 1150331.31W	Y	FB	TF	094.06	02.40			
BERBN	355957.25N / 1150050.72W	Y	FO	TF	090.32	02.17	AT 8000	AT 210K	
KLAS:RWY 19L,RWY 19R,RWY 26L,RWY 26R				FM	090.32				