

FEDERAL AVIATION ADMINISTRATION  
 FLIGHT STANDARDS SERVICE  
 STANDARD TERMINAL ARRIVAL (STAR)

Bearings, headings, courses, tracks and radials are magnetic. Elevations and altitudes are in feet, MSL. Altitudes are minimum altitudes unless otherwise indicated. Distances are in nautical miles (NM). Graphic depictions attached.

Arrival Name	Number	STAR Computer Code	Superseded Number	Dated	Effective Date				
RIDES (RNAV)	TWO	RIDES.RIDES2	ONE	08/12/2021	19 May 2022				
This is a corrected copy of the procedure published in NFDD 060. ** See page 4 for details. **									
TRANSITION ROUTES:									
Transition Name	Transition Computer Codes	From FIX/NAVAID	To FIX/NAVAID	Course	Distance	MEA	MOCA	MAA	Crossing Altitudes / Fixes
CCLUB	CCLUB.RIDES2	CCLUB	CCLUB						
			ZALUP	302.85	74.57	8000	1600		
			RIDES	302.70	19.18	6000	1500	AT/ABOVE 8000	
CHEFS	CHEFS.RIDES2	CHEFS	CHEFS						BETWEEN FL190 AND FL210
			MOOTS	344.90	12.44	6000	1600	AT/ABOVE 15000	
			RIDES	333.90	24.90	6000	1500	AT/ABOVE 8000	
KUTNE	KUTNE.RIDES2	KUTNE	KUTNE						
			CORNN	018.12	54.63	FL180	1600		
			BANDZ	345.67	30.90	FL180	1600	AT/BELOW FL230	
			CHEFS	345.46	16.96	16000	1600	BETWEEN FL190 AND FL210	
			MOOTS	344.90	12.44	6000	1600	AT/ABOVE 15000	
LAIZY	LAIZY.RIDES2	LAIZY	RIDES	333.90	24.90	6000	1500	AT/ABOVE 8000	
			LAIZY						
			CORNN	298.89	30.74	FL180	2600		
			BANDZ	345.67	30.90	FL180	1600	AT/BELOW FL230	
			CHEFS	345.46	16.96	16000	1600	BETWEEN FL190 AND FL210	
OCTAL	OCTAL.RIDES2	OCTAL	MOOTS	344.90	12.44	6000	1600	AT/ABOVE 15000	
			RIDES	333.90	24.90	6000	1500	AT/ABOVE 8000	
			OCTAL						
			CORNN	340.88	31.11	FL180	1600		
			BANDZ	345.67	30.90	FL180	1600	AT/BELOW FL230	
SPIFF	SPIFF.RIDES2	SPIFF	CHEFS	345.46	16.96	16000	1600	BETWEEN FL190 AND FL210	
			MOOTS	344.90	12.44	6000	1600	AT/ABOVE 15000	
			RIDES	333.90	24.90	6000	1500	AT/ABOVE 8000	
			ZALUP	270.54	25.38	8000	1600		



FEDERAL AVIATION ADMINISTRATION  
 FLIGHT STANDARDS SERVICE  
 STANDARD TERMINAL ARRIVAL (STAR)

Bearings, headings, courses, tracks and radials are magnetic. Elevations and altitudes are in feet, MSL. Altitudes are minimum altitudes unless otherwise indicated. Distances are in nautical miles (NM). Graphic depictions attached.

Arrival Name	Number	STAR Computer Code	Superseded Number	Dated	Effective Date				
<b>RIDES (RNAV)</b>	<b>TWO</b>	<b>RIDES.RIDES2</b>	<b>ONE</b>	<b>08/12/2021</b>	<b>19 May 2022</b>				
Transition Name	Transition Computer Codes	From FIX/NAVAID	To FIX/NAVAID	Course	Distance	MEA	MOCA	MAA	Crossing Altitudes / Fixes
			RIDES	302.70	19.18	6000	1500		AT/ABOVE 8000
WAPOM	WAPOM.RIDES2	WAPOM	WAPOM						
			RIDES	346.47	37.81	6000	1600		AT/ABOVE 8000

ARRIVAL ROUTE DESCRIPTION:

KMCO: FROM RIDES ON TRACK 344.01/9.93 TO WISRD.

LANDING KMCO RWY 17L/R, 18L/R: FROM WISRD ON TRACK 000.08/3.06 TO CROSS THEAM AT OR ABOVE 10000, THEN ON TRACK 000.81/9.06 TO CROSS PARRX BETWEEN 9000 AND 11000 AND AT 250 KIAS, THEN ON TRACK 005.06/7.10 TO CROSS HAANZ BETWEEN 8000 AND 9000 AND AT 220 KIAS, THEN ON TRACK 005.58/13.01 TO CROSS PTMAN AT 5000 AND AT 210 KIAS, THEN ON TRACK 005.58. EXPECT RADAR VECTORS TO FINAL APPROACH COURSE.

LANDING KMCO RWY 35L/R, 36L/R: FROM WISRD ON TRACK 339.16/4.29 TO CROSS HAHNA AT 6000 AND AT 210 KIAS, THEN ON TRACK 339.16. EXPECT ILS OR RNAV RWY 35R APPROACH OR RADAR VECTORS TO FINAL APPROACH COURSE.

LANDING KISM: FROM RIDES ON TRACK 342.72/6.36 TO CROSS WIGET AT 8000, THEN ON HEADING 290.00. EXPECT RADAR VECTORS TO FINAL APPROACH COURSE.

LANDING KLEE/KSFB/KORL: FROM RIDES ON TRACK 346.45/6.27 TO CROSS MPLEX AT 12000 AND AT 250 KIAS, THEN ON HEADING 351.00. EXPECT RADAR VECTORS TO FINAL APPROACH COURSE.

PBN REQUIREMENT NOTES

RNAV 1 - DME/DME/IRU OR GPS

EQUIPMENT REQUIREMENT NOTES

RADAR REQUIRED

PROCEDURAL DATA NOTES:

NOTE: Expect "descend via" clearance and landing direction (north or south) by ARTCC. For vertical navigation planning, landing south, select Rwy 17L, landing north, select Rwy 35R.

NOTE: Jet aircraft only.

NOTE: MCO approach will issue landing runway.

NOTE: LAIZY and SPIFF Transitions, ATC Assigned only.

NOTE: CCLUB Transition, ATC Assigned only except At or Below FL240.

FIXES AND/OR HOLDING PATTERNS:

CHART HOLDING AT RIDES: HOLD S, RT, 344.01 INBOUND, 10 NM LEGS.

CHART HOLDING AT ZALUP: HOLD SE, RT, 305.22 INBOUND, 10 NM LEGS.

COMMUNICATIONS:

CHART: ORLANDO APP CON



FEDERAL AVIATION ADMINISTRATION  
 FLIGHT STANDARDS SERVICE  
 STANDARD TERMINAL ARRIVAL (STAR)

Bearings, headings, courses, tracks and radials are magnetic. Elevations and altitudes are in feet, MSL. Altitudes are minimum altitudes unless otherwise indicated. Distances are in nautical miles (NM). Graphic depictions attached.

Arrival Name <b>RIDES (RNAV)</b>	Number <b>TWO</b>	STAR Computer Code <b>RIDES.RIDES2</b>	Superseded Number <b>ONE</b>	Dated <b>08/12/2021</b>	Effective Date <b>19 May 2022</b>
-------------------------------------	----------------------	-------------------------------------------	---------------------------------	----------------------------	--------------------------------------

AIRPORTS SERVED:

- ORLANDO, FL (KMCO)
- ORLANDO, FL (KORL)
- ORLANDO, FL (KISM)
- LEESBURG, FL (KLEE)
- ORLANDO, FL (KSFB)

LOST COMMUNICATIONS PROCEDURE:

REMARKS:

ENVIRONMENTAL REVIEW UNDER ORDER 1050.1 (LATEST EDITION) AND THE NOISE SCREENING HAVE BEEN ACCOMPLISHED.  
 AIR TRAFFIC REMARKS REF DESCENT GRADIENT AT THEAM/MPLEX: Different airports (transitions) require different restrictions making a window altitude NOT fit the needs of ATC.

ADDITIONAL FLIGHT DATA:

- DME/DME ASSESSMENT: SAT (RNP 2.0)
- MAG VAR = KMCO 06W/2015
- CHART AT MPLEX TERMINUS: LDG KLEE/KSFB/KORL
- CHART AT WIGET TERMINUS: LDG KISM
- CHART AT PTMAN TERMINUS: KMCO LDG RWY 17L/R, 18L/R
- CHART AT HAHNA TERMINUS: KMCO LDG RWY 35L/R, 36L/R

FLIGHT INSPECTED BY:

Name	Organization	Date	Signature
------	--------------	------	-----------

DEVELOPED BY:

VICKI TURNER	DESIGN IMPLEMENTATION MANAGER AJV-22	10/10/2021	Signature
Name	Organization	Date	Signature

APPROVED BY:

MARLON ROBINSON	MANAGER, AJV-A420		Signature
Name	Organization	Date	Signature

CHANGES:

1. REMOVED: NOTE: Descend via MACH number until intercepting 280K. Maintain 280K until slowed by the STAR or assigned by ATC.
2. DELETED LOSS COMM PROCEDURES.
3. ADDED: Altitude restriction of AOA 8000 at RIDES.



FEDERAL AVIATION ADMINISTRATION  
 FLIGHT STANDARDS SERVICE  
 STANDARD TERMINAL ARRIVAL (STAR)

Bearings, headings, courses, tracks and radials are magnetic. Elevations and altitudes are in feet, MSL. Altitudes are minimum altitudes unless otherwise indicated. Distances are in nautical miles (NM). Graphic depictions attached.

Arrival Name	Number	STAR Computer Code	Superseded Number	Dated	Effective Date
<b>RIDES (RNAV)</b>	<b>TWO</b>	<b>RIDES.RIDES2</b>	<b>ONE</b>	<b>08/12/2021</b>	<b>19 May 2022</b>

- 4. ADDED: New waypoint (BANDZ) 17 miles south of CHEFS waypoint with a restriction of AOB FL230.
- 5. ADDED: New Transition CCLUB ALONG WITH ATC ASSIGNED NOTE..
- 6. ADDED: Alitude restriction of AOA 15000 at MOOTS.
- 7. REMOVED: CHART NOTES: MCO Landing North: Expect RADAR Vectors prior to HAHNA.  
 NOTE: MCO Landing South: Expect RADAR Vectors prior to PTMAN.  
 NOTE: Landing ISM, Expect RADAR Vectors prior to WIGET.  
 NOTE: Landing LEE, ORL SFB, Expect RADAR Vectors prior to MPLEX.
- 8. LOWERED speed at MPLEX from 280 kias to 250 kias.
- 9. REMOVED BERTH TRANSITION.
- 10. Removed fix SERAY/HAMMY from fixes/holding section and added HERVI/FESHA.

REASONS:

- 1. Avoid any confusion users may have about NOTE.
- 2. LOST COMMS PROCEDURES REMOVED DUE TO TURNS GREATER THAN 90 DEGREES.
- 3-4. For airspace integrity.
- 5. Provide more efficient routing.
- 6. A restriction of AOA 15000 was added to MOOTS waypoint to de-conflict from overflight traffic.
- 7. No longer needed.
- 8. More effeicient vertical path.
- 9. No longer needed, ATC request.
- 10. ATC Request.

4/6/22: THIS IS A CORRECTED COPY OF THE FORM APPROVED ON 3/18/22.

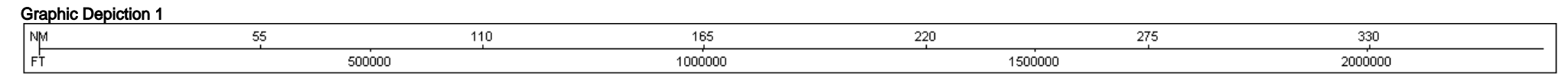
- 1. UPDATED CHANGES SECTION OF FORM TO REMOVE ANY REFERENCE TO LOST COMM.
- 2. ADDED "RWY" IN THE ARRIVAL ROUTE DESCRIPTION SO IT READS "EXPECT ILS OR RNAV RWY 35R APPROACH".
- 3. REMOVED HERVI AND FESHA FROM "FIXES AND/OR HOLDING POINTS SECTION"
- 4. REMOVED AIRPORT NAMES FROM AIRPORTS SERVED.
- 5. REMOVED MEA REMARK.
- 6. REMOVED ALL INSTANCES OF "OR AS ASSIGNED BY ATC" IN ARRIVAL TEXT.



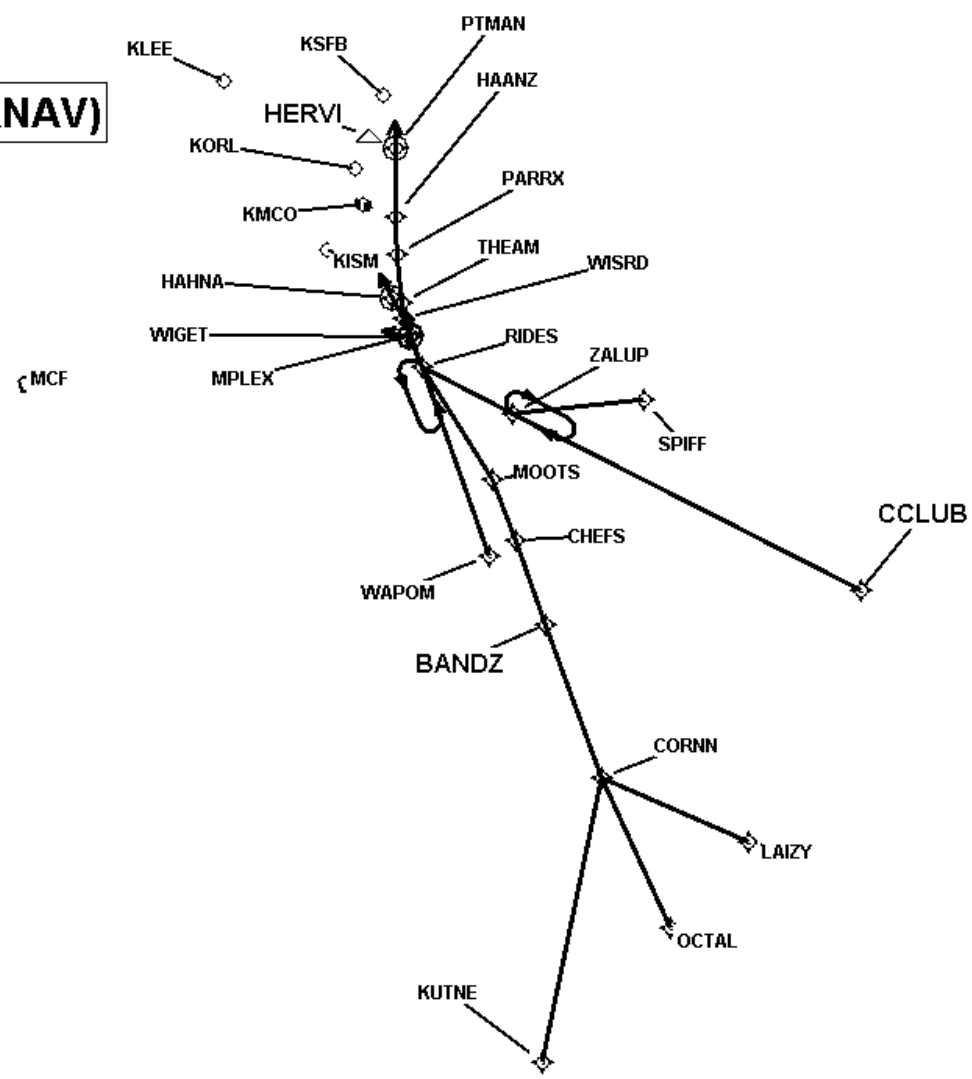
FEDERAL AVIATION ADMINISTRATION  
FLIGHT STANDARDS SERVICE  
STANDARD TERMINAL ARRIVAL (STAR)

Bearings, headings, courses, tracks and radials are magnetic. Elevations and altitudes are in feet, MSL. Altitudes are minimum altitudes unless otherwise indicated. Distances are in nautical miles (NM). Graphic depictions attached.

Arrival Name	Number	STAR Computer Code	Superseded Number	Dated	Effective Date
RIDES (RNAV)	TWO	RIDES.RIDES2	ONE	08/12/2021	19 May 2022



**RIDES (RNAV)**



FEDERAL AVIATION ADMINISTRATION  
FLIGHT STANDARDS SERVICE  
STANDARD TERMINAL ARRIVAL (STAR)

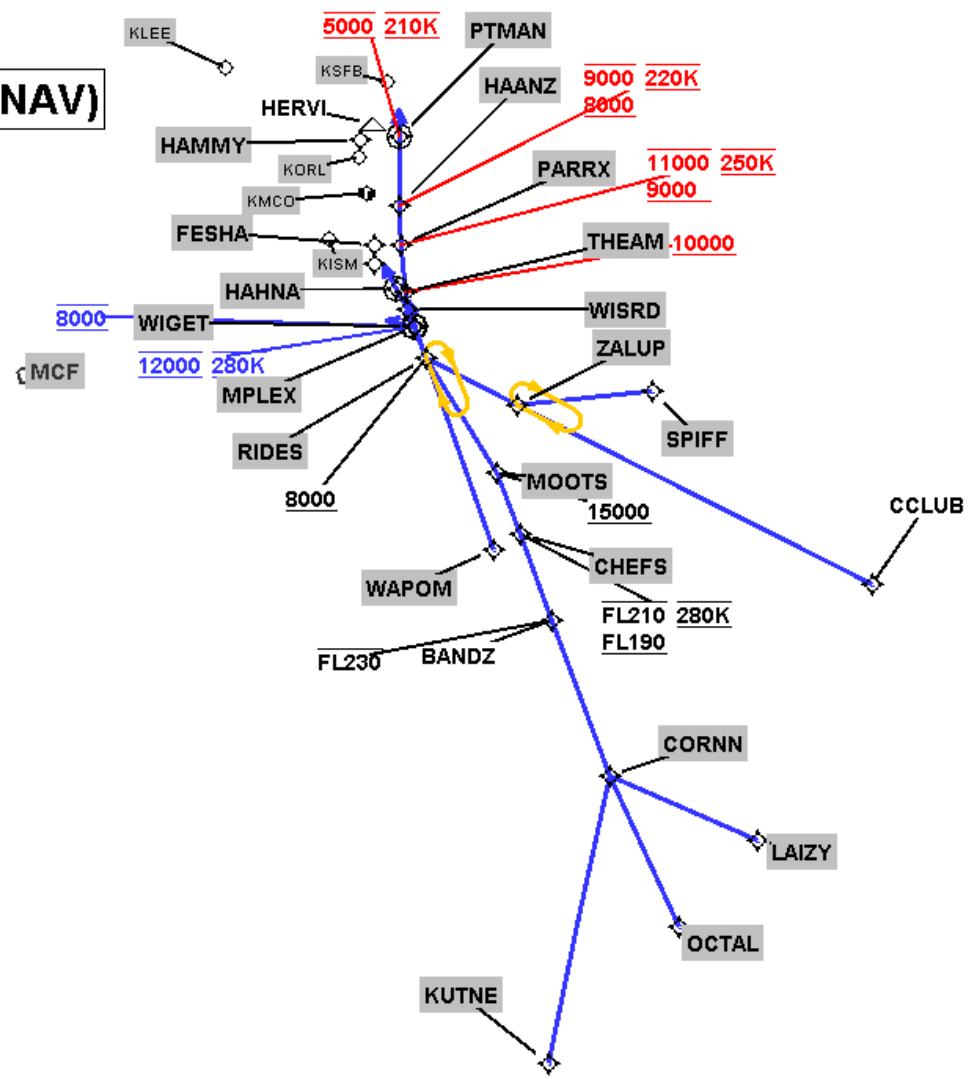
Bearings, headings, courses, tracks and radials are magnetic. Elevations and altitudes are in feet, MSL. Altitudes are minimum altitudes unless otherwise indicated. Distances are in nautical miles (NM). Graphic depictions attached.

Arrival Name	Number	STAR Computer Code	Superseded Number	Dated	Effective Date
RIDES (RNAV)	TWO	RIDES.RIDES2	ONE	08/12/2021	19 May 2022

Graphic Depiction 2



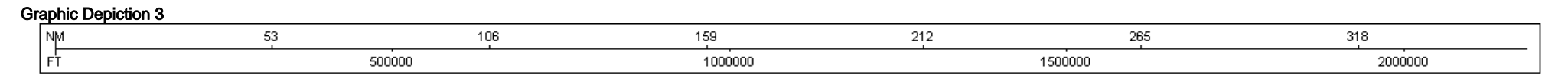
**RIDES (RNAV)**



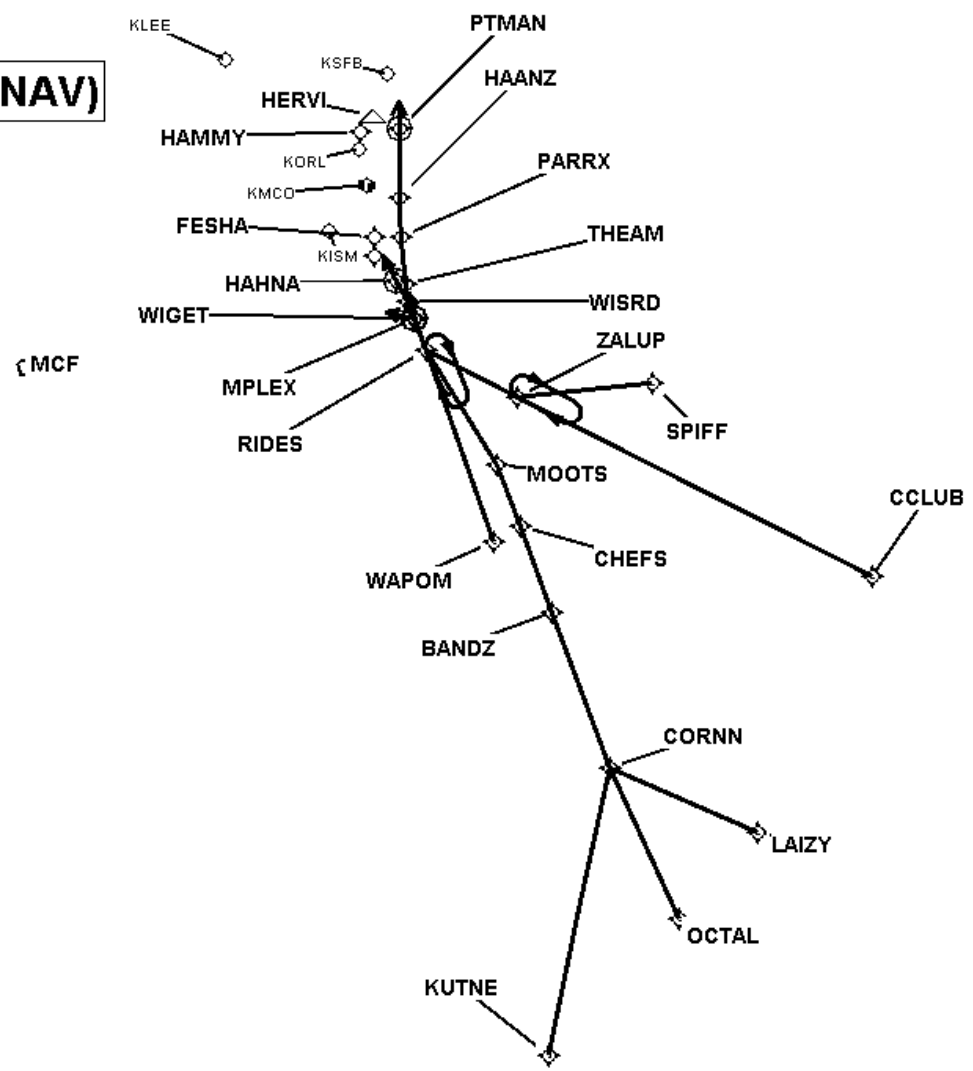
FEDERAL AVIATION ADMINISTRATION  
FLIGHT STANDARDS SERVICE  
STANDARD TERMINAL ARRIVAL (STAR)

Bearings, headings, courses, tracks and radials are magnetic. Elevations and altitudes are in feet, MSL. Altitudes are minimum altitudes unless otherwise indicated. Distances are in nautical miles (NM). Graphic depictions attached.

Arrival Name	Number	STAR Computer Code	Superseded Number	Dated	Effective Date
RIDES (RNAV)	TWO	RIDES.RIDES2	ONE	08/12/2021	19 May 2022



**RIDES (RNAV)**



FEDERAL AVIATION ADMINISTRATION  
 FLIGHT STANDARDS SERVICE  
 STAR (DATA RECORD)

Arrival Name <b>RIDES (RNAV)</b>	Number <b>TWO</b>	STAR Computer Code <b>RIDES.RIDES2</b>	Superseded Number <b>ONE</b>	Dated <b>08/12/2021</b>	Effective Date <b>19 May 2022</b>
-------------------------------------	----------------------	-------------------------------------------	---------------------------------	----------------------------	--------------------------------------

FIX/NAVAID	LAT/LONG	C	FO/FB	LEG TYPE	TC	DIST (NM)	ALTITUDE	SPEED	REMARKS
<b>En Route Transition</b>									
CCLUB	271258.23N / 0793116.72W	Y		IF					CCLUB.RIDES2
ZALUP	274624.15N / 0804616.83W	Y	FB	TF	296.85	74.57			
RIDES	275501.47N / 0810537.63W	Y	FB	TF	296.70	19.18	AT/ABOVE 8000		

<b>En Route Transition</b>									
CHEFS	272214.97N / 0804538.96W	Y		IF			FL190BFL210	AT 280K	CHEFS.RIDES2
MOOTS	273353.00N / 0805041.25W	Y	FB	TF	338.90	12.44	AT/ABOVE 15000		
RIDES	275501.47N / 0810537.63W	Y	FB	TF	327.90	24.90	AT/ABOVE 8000		

<b>En Route Transition</b>									
KUTNE	254342.77N / 0803943.96W	Y		IF					KUTNE.RIDES2
CORNN	263716.28N / 0802655.91W	Y	FB	TF	012.12	54.63			
BANDZ	270619.32N / 0803857.91W	Y	FB	TF	339.67	30.90	AT/BELOW FL230		
CHEFS	272214.97N / 0804538.96W	Y	FB	TF	339.46	16.96	FL190BFL210	AT 280K	
MOOTS	273353.00N / 0805041.25W	Y	FB	TF	338.90	12.44	AT/ABOVE 15000		
RIDES	275501.47N / 0810537.63W	Y	FB	TF	327.90	24.90	AT/ABOVE 8000		

<b>En Route Transition</b>									
LAIZY	262520.14N / 0795519.96W	Y		IF					LAIZY.RIDES2
CORNN	263716.28N / 0802655.91W	Y	FB	TF	292.89	30.74			
BANDZ	270619.32N / 0803857.91W	Y	FB	TF	339.67	30.90	AT/BELOW FL230		
CHEFS	272214.97N / 0804538.96W	Y	FB	TF	339.46	16.96	FL190BFL210	AT 280K	
MOOTS	273353.00N / 0805041.25W	Y	FB	TF	338.90	12.44	AT/ABOVE 15000		
RIDES	275501.47N / 0810537.63W	Y	FB	TF	327.90	24.90	AT/ABOVE 8000		

<b>En Route Transition</b>									
OCTAL	260901.92N / 0801211.60W	Y		IF					OCTAL.RIDES2
CORNN	263716.28N / 0802655.91W	Y	FB	TF	334.88	31.11			
BANDZ	270619.32N / 0803857.91W	Y	FB	TF	339.67	30.90	AT/BELOW FL230		





FEDERAL AVIATION ADMINISTRATION  
 FLIGHT STANDARDS SERVICE  
 STAR (DATA RECORD)

Arrival Name <b>RIDES (RNAV)</b>	Number <b>TWO</b>	STAR Computer Code <b>RIDES.RIDES2</b>	Superseded Number <b>ONE</b>	Dated <b>08/12/2021</b>	Effective Date <b>19 May 2022</b>
-------------------------------------	----------------------	-------------------------------------------	---------------------------------	----------------------------	--------------------------------------

FIX/NAVAID	LAT/LONG	C	FO/FB	LEG TYPE	TC	DIST (NM)	ALTITUDE	SPEED	REMARKS
CHEFS	272214.97N / 0804538.96W	Y	FB	TF	339.46	16.96	FL190BFL210	AT 280K	
MOOTS	273353.00N / 0805041.25W	Y	FB	TF	338.90	12.44	AT/ABOVE 15000		
RIDES	275501.47N / 0810537.63W	Y	FB	TF	327.90	24.90	AT/ABOVE 8000		

**En Route Transition**

SPIFF	274852.31N / 0801747.79W	Y		IF					SPIFF.RIDES2
ZALUP	274624.15N / 0804616.83W	Y	FB	TF	264.54	25.38			
RIDES	275501.47N / 0810537.63W	Y	FB	TF	296.70	19.18	AT/ABOVE 8000		

**En Route Transition**

WAPOM	271918.06N / 0805121.54W	Y		IF					WAPOM.RIDES2
RIDES	275501.47N / 0810537.63W	Y	FB	TF	340.47	37.81	AT/ABOVE 8000		

**Common Route**

RIDES	275501.47N / 0810537.63W	Y		IF			AT/ABOVE 8000		RIDES.RIDES2
WISRD	280415.62N / 0810950.00W	Y	FB	TF	338.01	09.93			

**Common Route**

RIDES	275501.47N / 0810537.63W	Y		IF			AT/ABOVE 8000		RIDES.RIDES2
WIGET	280052.69N / 0810827.91W	Y	FO	TF	336.72	06.36	AT 8000		
KISM				VM	284.00				

**Common Route**

RIDES	275501.47N / 0810537.63W	Y		IF			AT/ABOVE 8000		RIDES.RIDES2
MPLEX	280056.94N / 0810759.89W	Y	FO	TF	340.45	06.27	AT 12000	AT 250K	
KLEE,KORL,KSFB				VM	345.00				

**Runway Transition**

WISRD	280415.62N / 0810950.00W	Y		IF					
THEAM	280718.51N / 0811011.40W	Y	FB	TF	354.08	03.06	AT/ABOVE 10000		



FEDERAL AVIATION ADMINISTRATION  
FLIGHT STANDARDS SERVICE  
STAR (DATA RECORD)

Arrival Name	Number	STAR Computer Code	Superseded Number	Dated	Effective Date
RIDES (RNAV)	TWO	RIDES.RIDES2	ONE	08/12/2021	19 May 2022

FIX/NAVAID	LAT/LONG	C	FO/FB	LEG TYPE	TC	DIST (NM)	ALTITUDE	SPEED	REMARKS
PARRX	281621.59N / 0811107.10W	Y	FB	TF	354.81	09.06	9000B11000	AT 250K	
HAANZ	282328.89N / 0811114.99W	Y	FB	TF	359.06	07.10	8000B9000	AT 220K	
PTMAN	283631.53N / 0811121.45W	Y	FO	TF	359.58	13.01	AT 5000	AT 210K	
KMCO:RWY 17L,RWY 17R,RWY 18L,RWY 18R				FM	359.58				

**Runway Transition**

WISRD	280415.62N / 0810950.00W	Y		IF					
HAHNA	280805.88N / 0811201.44W	Y	FO	TF	333.16	04.29	AT 6000	AT 210K	
KMCO:RWY 35L,RWY 35R,RWY 36L,RWY 36R				FM	333.16				