

FEDERAL AVIATION ADMINISTRATION
 FLIGHT STANDARDS SERVICE
 STANDARD TERMINAL ARRIVAL (STAR)

Bearings, headings, courses, tracks and radials are magnetic. Elevations and altitudes are in feet, MSL. Altitudes are minimum altitudes unless otherwise indicated. Distances are in nautical miles (NM). Graphic depictions attached.

Arrival Name MAATY (RNAV)	Number THREE	STAR Computer Code MAATY.MAATY3	Superseded Number TWO	Dated 12/02/2021	Effective Date 19 May 2022
-------------------------------------	------------------------	---	---------------------------------	----------------------------	--------------------------------------

TRANSITION ROUTES: This is a corrected copy of the procedure published in NFDD 062. ** See page 5 for details. **

Transition Name	Transition Computer Codes	From FIX/NAVAID	To FIX/NAVAID	Course	Distance	MEA	MOCA	MAA	Crossing Altitudes / Fixes
ACORI	ACORI.MAATY3	ACORI	ACORI						
			CABLO	143.52	79.46	8000	2500		
			THRTL	144.08	35.12	8000	1800		
			HEVFN	144.24	40.11	5000	1600		
			LEGGT	155.59	41.12	5000	1300		
			GOJOE	155.81	13.15	5000	1300		
			AAHOY	155.83	31.53	5000	1300		
			MAATY	155.97	10.36	5000	1300		BETWEEN 8000 AND 11000
BADDD	BADDD.MAATY3	BADDD	BADDD						
			GPEEE	257.83	62.97	8000	1800		
			THRTL	211.98	60.21	8000	1800		
			HEVFN	144.24	40.11	5000	1600		
			LEGGT	155.59	41.12	5000	1300		
			GOJOE	155.81	13.15	5000	1300		
			AAHOY	155.83	31.53	5000	1300		
			MAATY	155.97	10.36	5000	1300		BETWEEN 8000 AND 11000
DEFUN	DEFUN.MAATY3	DEFUN	DEFUN						
			CABLO	096.70	66.78	8000	1800		
			THRTL	144.08	35.12	8000	1800		
			HEVFN	144.24	40.11	5000	1600		
			LEGGT	155.59	41.12	5000	1300		
			GOJOE	155.81	13.15	5000	1300		
			AAHOY	155.83	31.53	5000	1300		
			MAATY	155.97	10.36	5000	1300		BETWEEN 8000 AND 11000
GOJOE	GOJOE.MAATY3	GOJOE	GOJOE						
			AAHOY	155.83	31.53	5000	1300		
			MAATY	155.97	10.36	5000	1300		BETWEEN 8000 AND 11000



FEDERAL AVIATION ADMINISTRATION
 FLIGHT STANDARDS SERVICE
 STANDARD TERMINAL ARRIVAL (STAR)

Bearings, headings, courses, tracks and radials are magnetic. Elevations and altitudes are in feet, MSL. Altitudes are minimum altitudes unless otherwise indicated. Distances are in nautical miles (NM). Graphic depictions attached.

Arrival Name	Number			STAR Computer Code	Superseded Number			Dated	Effective Date
MAATY (RNAV)	THREE			MAATY.MAATY3	TWO			12/02/2021	19 May 2022
Transition Name	Transition Computer Codes	From FIX/NAVAID	To FIX/NAVAID	Course	Distance	MEA	MOCA	MAA	Crossing Altitudes / Fixes
HEVVN	HEVVN.MAATY3	HEVVN	HEVVN			5000			
			LEGGT	155.59	41.12	5000	1300		
			GOJOE	155.81	13.15	5000	1300		
			AAHOY	155.83	31.53	5000	1300		
			MAATY	155.97	10.36	5000	1300		BETWEEN 8000 AND 11000
HONID	HONID.MAATY3	HONID	HONID						
			THRTL	185.07	78.83	8000	2100		
			HEVVN	144.24	40.11	5000	1600		
			LEGGT	155.59	41.12	5000	1300		
			GOJOE	155.81	13.15	5000	1300		
			AAHOY	155.83	31.53	5000	1300		
			MAATY	155.97	10.36	5000	1300		BETWEEN 8000 AND 11000

ARRIVAL ROUTE DESCRIPTION:

KTPA: FROM MAATY ON TRACK 156.02/10.00 TO ROOKR.

LANDING KTPA RWY 1L/R, 28: FROM ROOKR ON TRACK 140.59/16.25 TO BLOUT, THEN ON TRACK 139.47/6.13 TO CBASS, THEN ON TRACK 187.04/6.40 TO CROSS TOOTH AT 5000 AND AT 210 KIAS, THEN ON TRACK 187.00/3.60 TO BUGGO, THEN ON TRACK 187.00/5.00 TO CROSS FELOM AT 5000 AND AT 210 KIAS, THEN ON TRACK 187.00. EXPECT RADAR VECTORS TO FINAL APPROACH COURSE.

LANDING KTPA RWY 19L/R, 28: FROM ROOKR ON TRACK 093.25/15.76 TO CROSS SCLOP AT 5000 AND AT 230 KIAS, THEN ON HEADING 097.00 OR AS ASSIGNED BY ATC. EXPECT RADAR VECTORS TO FINAL APPROACH COURSE.

LANDING KCMF/KVDF/KLAL: FROM MAATY ON TRACK 156.02/5.24 TO CROSS GOOFS AT 11000, THEN ON HEADING 155.00. EXPECT RADAR VECTORS TO FINAL APPROACH COURSE.

PBN REQUIREMENT NOTES

RNAV 1 - DME/DME/IRU OR GPS

EQUIPMENT REQUIREMENT NOTES

RADAR REQUIRED

PROCEDURAL DATA NOTES:

NOTE: JET AND TURBOPROP AIRCRAFT ONLY

NOTE: BADDD, HEVVN and GOJOE Transitions, ATC Assigned only.



FEDERAL AVIATION ADMINISTRATION
 FLIGHT STANDARDS SERVICE
 STANDARD TERMINAL ARRIVAL (STAR)

Bearings, headings, courses, tracks and radials are magnetic. Elevations and altitudes are in feet, MSL. Altitudes are minimum altitudes unless otherwise indicated. Distances are in nautical miles (NM). Graphic depictions attached.

Arrival Name	Number	STAR Computer Code	Superseded Number	Dated	Effective Date
MAATY (RNAV)	THREE	MAATY.MAATY3	TWO	12/02/2021	19 May 2022

FIXES AND/OR HOLDING PATTERNS:

- CHART HOLDING AT HEVVN: HOLD NW, LT, 155.59 INBOUND, 10 NM LEGS.
- CHART HOLDING AT MAATY: HOLD NW, RT, 155.97 INBOUND, 8 NM LEGS.
- CHART HOLDING AT THRTL: HOLD NW, LT, 144.08 INBOUND, 10 NM LEGS.
- CHART: FADDI, LAGOO, KRSTI.

COMMUNICATIONS:

- CHART: TAMPA APP CON
- CHART: TAMPA EXECUTIVE AWOS

AIRPORTS SERVED:

- TAMPA, FL (KTPA)
- LAKELAND, FL (KLAL)
- TAMPA, FL (KMCF)
- TAMPA, FL (KVDF)

LOST COMMUNICATIONS PROCEDURE:

REMARKS:

- THE ENVIRONMENTAL REVIEW UNDER ORDER 1050.1 (LATEST EDITION) AND THE NOISE SCREENING HAVE BEEN ACCOMPLISHED.
- TARGETS (IDENTIFIED) CONTROLLING OBSTRUCTIONS OVER WATER DOCUMENTED AS 295 FT SHIPS.

ADDITIONAL FLIGHT DATA:

- DME/DME ASSESSMENT: SAT (RNP 2.0)
- MAG VAR = KTPA 05W/2010
- CHART AT FELOM TERMINUS: KTPA LDG RWY 1L/R, 10.
- CHART AT SCLOP TERMINUS: KTPA LDG RWY 19L/R, 28.
- CHART AT GOOFS TERMINUS: LDG KMCF/KVDF/KLAL.



FEDERAL AVIATION ADMINISTRATION
 FLIGHT STANDARDS SERVICE
 STANDARD TERMINAL ARRIVAL (STAR)

Bearings, headings, courses, tracks and radials are magnetic. Elevations and altitudes are in feet, MSL. Altitudes are minimum altitudes unless otherwise indicated. Distances are in nautical miles (NM). Graphic depictions attached.

Arrival Name	Number	STAR Computer Code	Superseded Number	Dated	Effective Date
MAATY (RNAV)	THREE	MAATY.MAATY3	TWO	12/02/2021	19 May 2022
<u>FLIGHT INSPECTED BY:</u>				Digitally signed by ALLAN WILL Apr 05, 2022	
GARY BELL		FPO	03/17/2022	Signature	
Name		Organization	Date		
<u>DEVELOPED BY:</u>				Digitally signed by ALLAN WILL Apr 05, 2022	
VICKI TURNER		DESIGN IMPLEMENTATION MANAGER AJV-E22	09/24/2021	Signature	
Name		Organization	Date		
<u>APPROVED BY:</u>				Digitally signed by ALLAN WILL Apr 05, 2022	
MARLON ROBINSON		MANAGER, AJV-A420		Signature	
Name		Organization	Date		

CHANGES:

1. REMOVED NOTE: Primary landing Rwys 01 L/R, 19L/R.
2. ADDED: DEFUN Enroute Transition
3. ADDED: ACORI Enroute Transition
4. ADDED: HONID Enroute Transition
5. ADDED: BADDD Enroute Transition
6. ADDED: Holding at THRTL
7. DELETED: KRISTI Enroute Transition
8. ADDED: KRSTI as Standalone Waypoint.
9. ADDED CROSSING RESTRICTION AT MAATY: BETWEEN 8000 AND 11000.
10. GOJOE AND HEVVN TRANSITIONS: LOWERED MEA BETWEEN GOJOE AND AAHOY FROM 15000 TO 5000.
11. HEVVN TRANSITION: LOWERED MEA BETWEEN HEVVN AND LEGGT FROM FL200 TO 5000 AND BETWEEN LEGGT AND GOJOE FROM FL180 TO 5000.
12. CHANGED NOTE: 'KRSTI AND GOJOE TRANSITIONS, ATC ASSIGNED ONLY' TO 'BADDD, HEVVN AND GOJOE TRANSITIONS, ATC ASSIGNED ONLY.

REASONS:

- 1, 10, 11. ATC REQUEST
- 2-6. NEW TRANSITIONS created to provide more efficient routings
7. ATC REQUEST, Replaced with BADDD Transition
8. Provides point in space for reference.
12. BADDD replaces KRSTI and HEVVN added per ATC request.



FEDERAL AVIATION ADMINISTRATION
 FLIGHT STANDARDS SERVICE
 STANDARD TERMINAL ARRIVAL (STAR)

Bearings, headings, courses, tracks and radials are magnetic. Elevations and altitudes are in feet, MSL. Altitudes are minimum altitudes unless otherwise indicated.
 Distances are in nautical miles (NM). Graphic depictions attached.

Arrival Name	Number	STAR Computer Code	Superseded Number	Dated	Effective Date
MAATY (RNAV)	THREE	MAATY.MAATY3	TWO	12/02/2021	19 May 2022

03/31/22: THIS IS A CORRECTED COPY OF THE FORM APPROVED ON 03/21/22.

1. CORRECTED MOCA AT CABLO FROM 1800 TO 2500.
2. REMOVED PROCEDURAL DATA NOTES: TPA Landing North: Expect RADAR Vectors prior to FELOM, TPA Landing South: Expect RADAR Vectors prior to SCLOP, and Landing all Satellite Airports: Expect RADAR Vectors prior to GOOFS.
3. ADDED 'CHART:' PRIOR TO TAMPA APP CON AND TAMPA EXECUTIVE AWOS IN COMMUNICATIONS - 8260.19I PARA. 4-5-12F.
4. REMOVED AIRPORT NAMES FROM AIRPORTS SERVED - PER AFS FINDING FROM DADES (RNAV) STAR REVIEW.
5. REMOVED REFERENCE TO LOST COMMUNICATIONS PROCEDURES IN CHANGES/REASONS SECTION OF 17.1 FORM - LOST COMMUNICATIONS PROCEDURES PREVIOUSLY REMOVED PER FLMP TEAM REQUEST.
6. REMOVED "OR AS ASSIGNED BY ATC" FROM LANDING KMCF/KVDF/KLAL ARRIVAL TEXT.

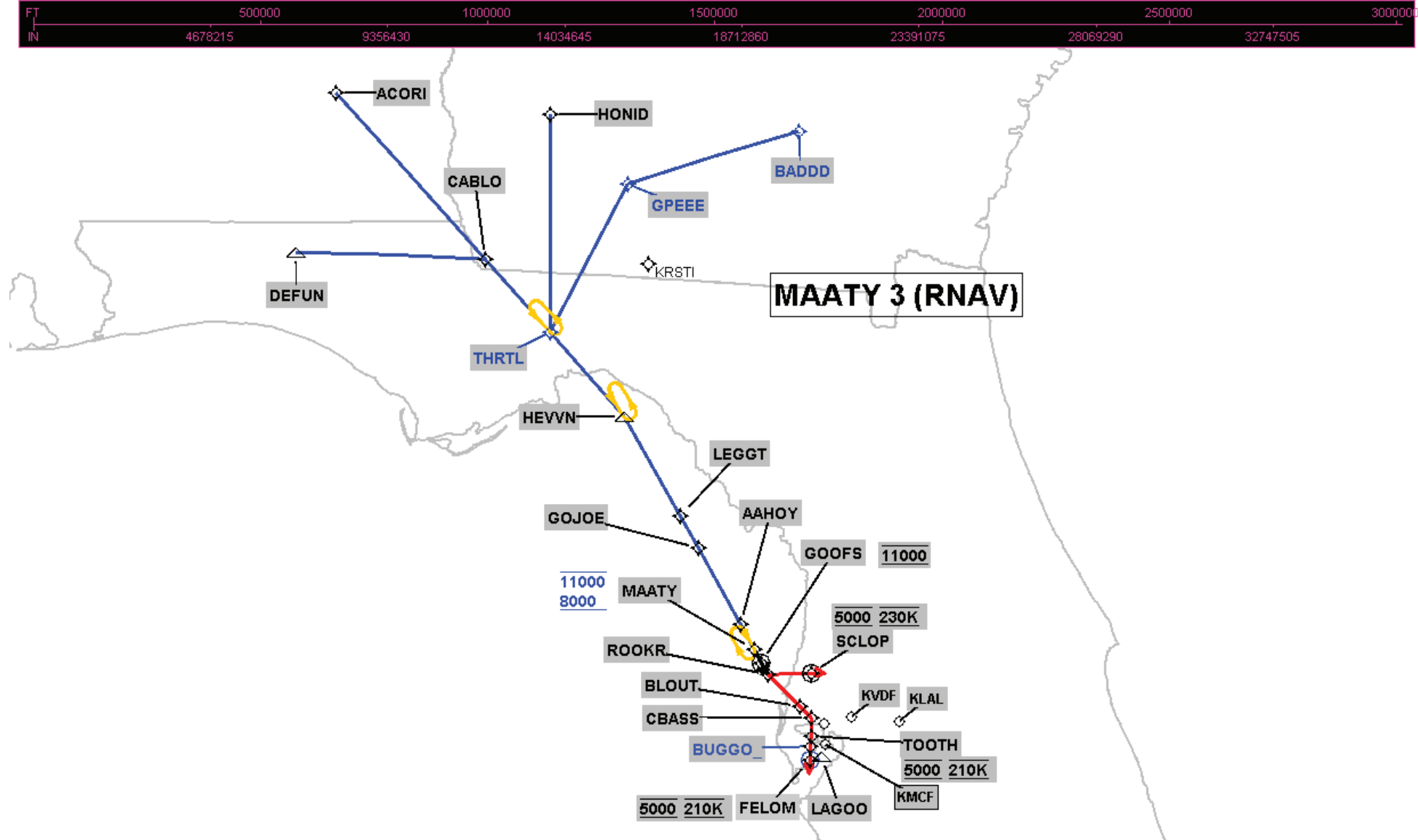


FEDERAL AVIATION ADMINISTRATION
FLIGHT STANDARDS SERVICE
STANDARD TERMINAL ARRIVAL (STAR)

Bearings, headings, courses, tracks and radials are magnetic. Elevations and altitudes are in feet, MSL. Altitudes are minimum altitudes unless otherwise indicated. Distances are in nautical miles (NM). Graphic depictions attached.

Arrival Name	Number	STAR Computer Code	Superseded Number	Dated	Effective Date
MAATY (RNAV)	THREE	MAATY.MAATY3	TWO	12/02/2021	19 May 2022

Graphic Depiction 1

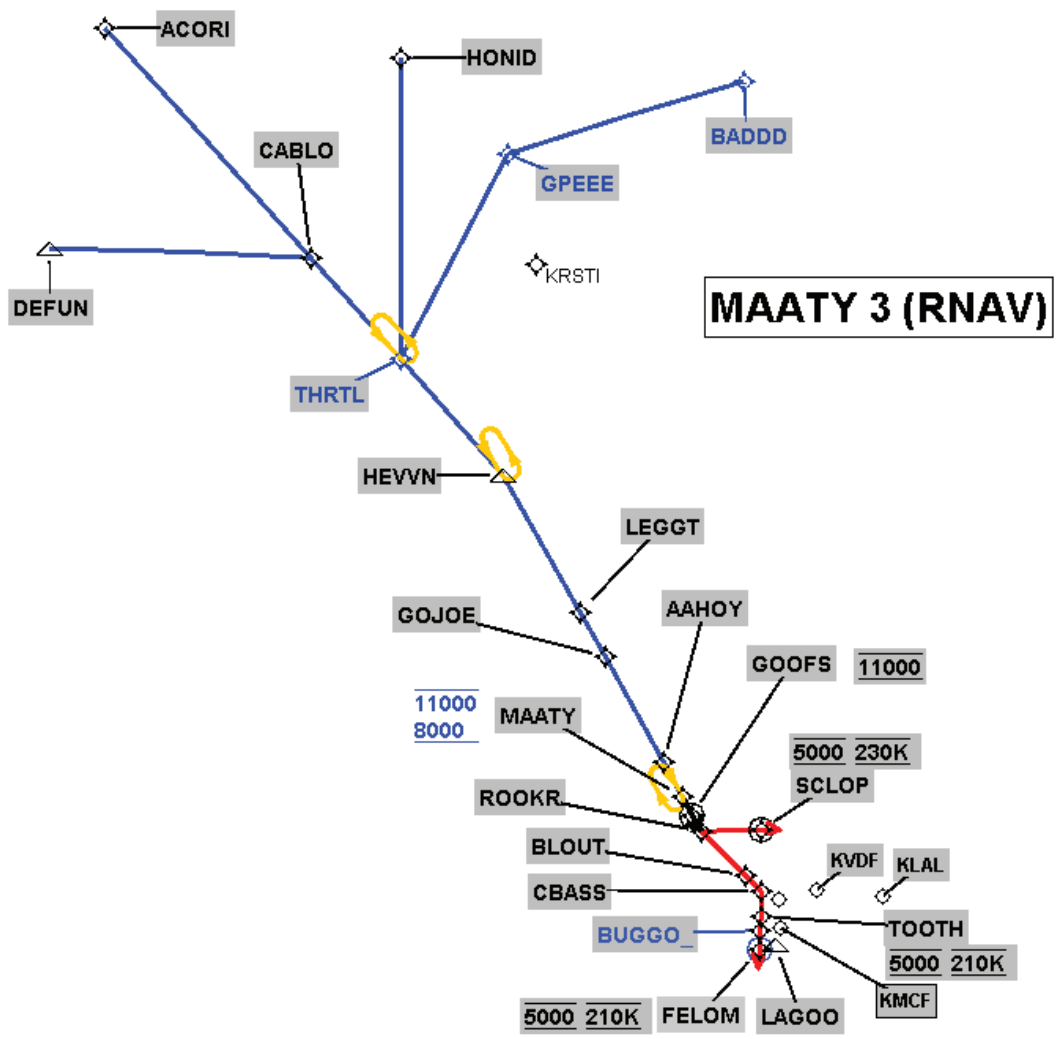
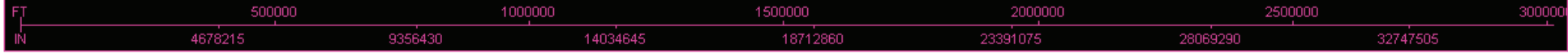


FEDERAL AVIATION ADMINISTRATION
FLIGHT STANDARDS SERVICE
STANDARD TERMINAL ARRIVAL (STAR)

Bearings, headings, courses, tracks and radials are magnetic. Elevations and altitudes are in feet, MSL. Altitudes are minimum altitudes unless otherwise indicated. Distances are in nautical miles (NM). Graphic depictions attached.

Arrival Name	Number	STAR Computer Code	Superseded Number	Dated	Effective Date
MAATY (RNAV)	THREE	MAATY.MAATY3	TWO	12/02/2021	19 May 2022

Graphic Depiction 2



FEDERAL AVIATION ADMINISTRATION
 FLIGHT STANDARDS SERVICE
 STAR (DATA RECORD)

Arrival Name MAATY (RNAV)	Number THREE	STAR Computer Code MAATY.MAATY3	Superseded Number TWO	Dated 12/02/2021	Effective Date 19 May 2022
-------------------------------------	------------------------	---	---------------------------------	----------------------------	--------------------------------------

FIX/NAVAID	LAT/LONG	C	FO/FB	LEG TYPE	TC	DIST (NM)	ALTITUDE	SPEED	REMARKS
En Route Transition									
ACORI	314623.36N / 0855129.51W	Y		IF					ACORI.MAATY3
CABLO	304629.00N / 0845024.00W	Y	FB	TF	138.52	79.46			
THRTL	301949.99N / 0842349.07W	Y	FB	TF	139.08	35.12			
HEVVN	294919.11N / 0835342.89W	Y	FB	TF	139.24	40.11			
LEGGT	291322.56N / 0833038.60W	Y	FB	TF	150.59	41.12			
GOJOE	290151.75N / 0832319.67W	Y	FB	TF	150.81	13.15			
AAHOY	283414.32N / 0830552.46W	Y	FB	TF	150.83	31.53			
MAATY	282509.18N / 0830010.37W	Y	FB	TF	150.97	10.36	8000B11000		

En Route Transition									
BADDD	313237.68N / 0824205.34W	Y		IF					BADDD.MAATY3
GPEEE	311340.41N / 0835215.08W	Y	FB	TF	252.83	62.97			
THRTL	301949.99N / 0842349.07W	Y	FB	TF	206.98	60.21			
HEVVN	294919.11N / 0835342.89W	Y	FB	TF	139.24	40.11			
LEGGT	291322.56N / 0833038.60W	Y	FB	TF	150.59	41.12			
GOJOE	290151.75N / 0832319.67W	Y	FB	TF	150.81	13.15			
AAHOY	283414.32N / 0830552.46W	Y	FB	TF	150.83	31.53			
MAATY	282509.18N / 0830010.37W	Y	FB	TF	150.97	10.36	8000B11000		

En Route Transition									
DEFUN	304851.27N / 0860753.09W	Y		IF					DEFUN.MAATY3
CABLO	304629.00N / 0845024.00W	Y	FB	TF	091.70	66.78			
THRTL	301949.99N / 0842349.07W	Y	FB	TF	139.08	35.12			
HEVVN	294919.11N / 0835342.89W	Y	FB	TF	139.24	40.11			
LEGGT	291322.56N / 0833038.60W	Y	FB	TF	150.59	41.12			
GOJOE	290151.75N / 0832319.67W	Y	FB	TF	150.81	13.15			
AAHOY	283414.32N / 0830552.46W	Y	FB	TF	150.83	31.53			
MAATY	282509.18N / 0830010.37W	Y	FB	TF	150.97	10.36	8000B11000		



FEDERAL AVIATION ADMINISTRATION
 FLIGHT STANDARDS SERVICE
 STAR (DATA RECORD)

Arrival Name MAATY (RNAV)	Number THREE	STAR Computer Code MAATY.MAATY3	Superseded Number TWO	Dated 12/02/2021	Effective Date 19 May 2022
-------------------------------------	------------------------	---	---------------------------------	----------------------------	--------------------------------------

FIX/NAVAID	LAT/LONG	C	FO/FB	LEG TYPE	TC	DIST (NM)	ALTITUDE	SPEED	REMARKS
En Route Transition									
GOJOE	290151.75N / 0832319.67W	Y		IF					GOJOE.MAATY3
AAHOY	283414.32N / 0830552.46W	Y	FB	TF	150.83	31.53			
MAATY	282509.18N / 0830010.37W	Y	FB	TF	150.97	10.36	8000B11000		

En Route Transition									
HEVVN	294919.11N / 0835342.89W	Y		IF					HEVVN.MAATY3
LEGGT	291322.56N / 0833038.60W	Y	FB	TF	150.59	41.12			
GOJOE	290151.75N / 0832319.67W	Y	FB	TF	150.81	13.15			
AAHOY	283414.32N / 0830552.46W	Y	FB	TF	150.83	31.53			
MAATY	282509.18N / 0830010.37W	Y	FB	TF	150.97	10.36	8000B11000		

En Route Transition									
HONID	313850.31N / 0842342.60W	Y		IF					HONID.MAATY3
THRTL	301949.99N / 0842349.07W	Y	FB	TF	180.07	78.83			
HEVVN	294919.11N / 0835342.89W	Y	FB	TF	139.24	40.11			
LEGGT	291322.56N / 0833038.60W	Y	FB	TF	150.59	41.12			
GOJOE	290151.75N / 0832319.67W	Y	FB	TF	150.81	13.15			
AAHOY	283414.32N / 0830552.46W	Y	FB	TF	150.83	31.53			
MAATY	282509.18N / 0830010.37W	Y	FB	TF	150.97	10.36	8000B11000		

Common Route									
MAATY	282509.18N / 0830010.37W	Y		IF			8000B11000		MAATY.MAATY3
ROOKR	281622.95N / 0825441.21W	Y	FB	TF	151.02	10.00			

Common Route									
MAATY	282509.18N / 0830010.37W	Y		IF			8000B11000		MAATY.MAATY3
GOOFS	282033.28N / 0825717.65W	Y	FO	TF	151.02	05.24	AT 11000		
KLAL,KMCF,KVDF				VM	150.00				



FEDERAL AVIATION ADMINISTRATION
FLIGHT STANDARDS SERVICE
STAR (DATA RECORD)

Arrival Name MAATY (RNAV)	Number THREE	STAR Computer Code MAATY.MAATY3	Superseded Number TWO	Dated 12/02/2021	Effective Date 19 May 2022
-------------------------------------	------------------------	---	---------------------------------	----------------------------	--------------------------------------

FIX/NAVAID	LAT/LONG	C	FO/FB	LEG TYPE	TC	DIST (NM)	ALTITUDE	SPEED	REMARKS
Runway Transition									
ROOKR	281622.95N / 0825441.21W	Y		IF					
BLOUT	280444.03N / 0824149.86W	Y	FB	TF	135.59	16.25			
CBASS	280025.50N / 0823653.27W	Y	FB	TF	134.47	06.13			
TOOTH	275400.48N / 0823708.70W	Y	FB	TF	182.04	06.40	AT 5000	AT 210K	
BUGGO	275024.04N / 0823717.20W	Y	FB	TF	182.00	03.60			
FELOM	274523.21N / 0823729.01W	Y	FO	TF	182.00	05.00	AT 5000	AT 210K	
KTPA:RWY 1L,RWY 1R,RWY 10				FM	182.00				
Runway Transition									
ROOKR	281622.95N / 0825441.21W	Y		IF					
SCLOP	281650.81N / 0823650.71W	Y	FO	TF	088.25	15.76	AT 5000	AT 230K	
KTPA:RWY 19L,RWY 19R,RWY 28				FM	092.00				