

FEDERAL AVIATION ADMINISTRATION
FLIGHT STANDARDS SERVICE
STANDARD TERMINAL ARRIVAL (STAR)

Bearings, headings, courses, tracks and radials are magnetic. Elevations and altitudes are in feet, MSL. Altitudes are minimum altitudes unless otherwise indicated.
Ceilings are in feet above airport elevation. Distances are in nautical miles. Visibilities are in statute miles or feet RVR unless otherwise indicated.

Arrival Name	Number	STAR Computer Code	Superseded Number	Dated	Effective Date
GIIBS (RNAV)	FOUR	GIIBS.GIIBS4	THREE	07/19/2018	11 JUL 2024

TRANSITION ROUTES:

Transition Name	Transition Computer Codes	From FIX/NAVAID	To FIX/NAVAID	Course	Distance	MEA	MOCA	MAA	Crossing Altitudes / Fixes
EASEL	EASEL.GIIBS4	EASEL	EASEL						BETWEEN 14000 AND FL190
			GIIBS	357.24	08.32	10000	2300		
HAGAL	HAGAL.GIIBS4	HAGAL	HAGAL						
			HASEV	358.37	11.59	10000	2300		AT/ABOVE FL240
			GLNCH	358.18	11.79	10000	2300		
			EASEL	358.44	26.68	10000	2300		BETWEEN 14000 AND FL190
			GIIBS	357.24	08.32	10000	2300		

ARRIVAL ROUTE DESCRIPTION:

FROM GIIBS ON TRACK 340.93/7.60 TO BUPTE.

LANDING RWY 5L/R: FROM BUPTE ON TRACK 340.90/4.03 TO CROSS JOCKE BETWEEN 12000 AND 16000, THEN ON TRACK 326.04/10.04 TO CROSS FAMIL AT OR ABOVE 10000, THEN ON TRACK 327.77/10.16 TO CROSS MOSLY AT OR ABOVE 7000, THEN ON TRACK 319.71/6.22 TO CROSS KNIGT AT 6000 AND AT 210 KIAS, THEN ON TRACK 229.71/7.25 TO CROSS DOCEY AT 6000 AND AT 210 KIAS, THEN ON TRACK 229.71. EXPECT RADAR VECTORS TO FINAL APPROACH COURSE.

LANDING RWY 14: FROM BUPTE ON TRACK 340.90/4.03 TO CROSS JOCKE BETWEEN 12000 AND 16000, THEN ON TRACK 323.67/10.04 TO CROSS OPEVE AT OR ABOVE 10000, THEN ON TRACK 323.60/4.09 TO PDIDY, THEN ON TRACK 309.27/10.52 TO CROSS ROGIE AT OR ABOVE 7000 AND AT 230 KIAS, THEN ON TRACK 309.16/7.00 TO CROSS PNFLD AT 6000 AND AT 210 KIAS, THEN ON TRACK 319.61/7.00 TO CROSS WONOK AT 6000 AND AT 210 KIAS, THEN ON TRACK 319.61. EXPECT RADAR VECTORS TO FINAL APPROACH COURSE.

LANDING RWY 23L/R: FROM BUPTE ON TRACK 340.90/4.03 TO CROSS JOCKE BETWEEN 12000 AND 16000, THEN ON TRACK 326.04/10.04 TO CROSS FAMIL AT OR ABOVE 10000, THEN ON TRACK 327.77/10.16 TO CROSS MOSLY AT OR ABOVE 7000, THEN ON TRACK 319.71/6.22 TO CROSS KNIGT AT 6000 AND AT 210 KIAS, THEN ON TRACK 049.60/6.50 TO CROSS RAMEY AT 6000 AND AT 210 KIAS, THEN ON TRACK 049.60. EXPECT RADAR VECTORS TO FINAL APPROACH COURSE.

LANDING RWY 32: FROM BUPTE ON TRACK 340.88/10.38 TO CROSS SADLE AT OR ABOVE 7000 AND AT 230 KIAS, THEN ON TRACK 320.93/11.85 TO CROSS OZMOE AT OR ABOVE 4500 AND AT 210 KIAS. EXPECT RNP, GPS, ILS OR LOC RWY 32 APPROACH OR RADAR VECTORS TO FINAL APPROACH COURSE.

PBN REQUIREMENT NOTES:

RNAV 1 - DME/DME/IRU OR GPS

EQUIPMENT REQUIREMENT NOTES:

RADAR REQUIRED

PROCEDURAL DATA NOTES:

NOTE: EXPECT DESCEND VIA CLEARANCE AND LANDING DIRECTION ASSIGNMENT BY INDIANAPOLIS CENTER. APPROACH WILL ASSIGN LANDING RWY.

NOTE: EASEL TRANSITION FOR SDF TERMINAL AREA DEPARTURES ONLY.

NOTE: FOR NON-GPS EQUIPPED AIRCRAFT LANDING RWY 14; SHB DME MUST BE OPERATIONAL.

NOTE: KIND LANDING SOUTHWEST SELECT RWY 23L TRANSITION. EXPECT RUNWAY ASSIGNMENT FROM INDIANAPOLIS APP CON PRIOR TO GIIBS.

NOTE: KIND LANDING NORTHEAST SELECT RWY 5R TRANSITION. EXPECT RUNWAY ASSIGNMENT FROM INDIANAPOLIS APP CON PRIOR TO GIIBS.

FIXES AND/OR HOLDING PATTERNS:

CHART HOLDING AT HASEV: HOLD S, LT, 358.37 INBOUND, 10 NM LEGS.

CHART HOLDING AT EASEL: HOLD S, LT, 358.44 INBOUND, 10 NM LEGS.

FEDERAL AVIATION ADMINISTRATION
FLIGHT STANDARDS SERVICE
STANDARD TERMINAL ARRIVAL (STAR)

Bearings, headings, courses, tracks and radials are magnetic. Elevations and altitudes are in feet, MSL. Altitudes are minimum altitudes unless otherwise indicated.
Ceilings are in feet above airport elevation. Distances are in nautical miles. Visibilities are in statute miles or feet RVR unless otherwise indicated.

Arrival Name	Number	STAR Computer Code	Superseded Number	Dated	Effective Date
GIIBS (RNAV)	FOUR	GIIBS.GIIBS4	THREE	07/19/2018	11 JUL 2024

COMMUNICATIONS:

CHART: IND APP CON.

AIRPORTS SERVED:

<u>AIRPORT ID</u>	<u>CITY</u>	<u>STATE</u>
KIND	INDIANAPOLIS	IN

LOST COMMUNICATIONS PREFERENCES:**REMARKS:**

CRITICAL DME NOTE IS THE RESULT OF POST FLIGHT INSPECTION FROM LAST AMDT, NOT DME/DME ASSESSMENT.

ADDITIONAL FLIGHT DATA:

DME/DME ASSESSMENT: SAT (RNP 2.0)
MAG VAR: KIND 05W/2015
CHART AT OZMOE TERMINUS: KIND LDG RWY 32
CHART AT RAMEY TERMINUS: KIND LDG RWY 23L/R
CHART AT DOCEY TERMINUS: KIND LDG RWY 5L/R
CHART AT WONOK TERMINUS: KIND LDG RWY 14

FLIGHT INSPECTED BY:

JAMES ONIEAL

ORGANIZATION:

FPO

DATE:

03/13/2024

Flight Inspected Signature:

Digitally signed by

CASIMIR L TABAKA

Mar 28, 2024

Digitally signed by

LORRI F DOWNEY

Jan 24, 2024

DEVELOPED BY:

LORRI DOWNEY

AJV-A432

12/13/2023

Developed By Signature:

APPROVED BY:

CASIMIR TABAKA

AJV-A432

Approved By Signature:

Digitally signed by

CASIMIR L TABAKA

Jan 29, 2024

CHANGES:

1. REMOVED SPEED RESTRICTION AT MOSLY.
2. ADDED ALTITUDE 6000 MSL AND SPEED RESTRICTION 210K AT WONOK.
3. ADDED ALTITUDE 6000 MSL AND SPEED RESTRICTION 210K AT RAMEY.
4. CHANGED ALTITUDE AT EASEL FROM AT/ABOVE 13000 TO BLOCK ALTITUDE 14000 MSL TO FL190.
5. CHANGED MOCA ON ALL ENROUTE TRANSITIONS TO 2300 MSL.
6. ADDED CHART NOTE "KIND LANDING SOUTHWEST SELECT RWY 23L TRANSITION. EXPECT RUNWAY ASSIGNMENT FROM INDIANAPOLIS APP CON PRIOR TO GIIBS."
7. ADDED CHART NOTE " KIND LANDING NORTHEAST SELECT RWY 5R TRANSITION. EXPECT RUNWAY ASSIGNMENT FROM INDIANAPOLIS APP CON PRIOR TO GIIBS."

FEDERAL AVIATION ADMINISTRATION
FLIGHT STANDARDS SERVICE
STANDARD TERMINAL ARRIVAL (STAR)

Bearings, headings, courses, tracks and radials are magnetic. Elevations and altitudes are in feet, MSL. Altitudes are minimum altitudes unless otherwise indicated.
Ceilings are in feet above airport elevation. Distances are in nautical miles. Visibilities are in statute miles or feet RVR unless otherwise indicated.

Arrival Name	Number	STAR Computer Code	Superseded Number	Dated	Effective Date
GIIBS (RNAV)	FOUR	GIIBS.GIIBS4	THREE	07/19/2018	11 JUL 2024

8. REMOVED NOTE: DME/DME/IRU OR GPS REQUIRED FROM PROCEDURAL DATA NOTES.

9. REMOVED RNAV 1 FROM PROCEDURAL DATA NOTES.

10. ADDED PBN REQUIREMENTS NOTE: RNAV 1-DME/DME/IRU OR GPS.

11. REMOVED NOTE: RADAR REQUIRED FROM PROCEDURAL DATA NOTES.

12. ADDED EQUIPMENT REQUIREMENT NOTE: RADAR REQUIRED.

13. ADDED TERMINUS DATA TO ADDITIONAL FLIGHT DATA.

14. REMOVED AIRPORT NAME FROM AIRPORTS SERVED.

15. REMOVED MEA/MOCA VALUES FROM ARRIVAL DESCRIPTION.

16. REMOVED RECOMMENDED NAVAID FROM 17.2.

17. FIX EASEL MOVED 1.14 NM WEST.

18. REMOVED NOTE "CHART LOST COMMUNICATION: IN THE EVENT OF LOST COMMUNICATION PRIOR TO RUNWAY ASSIGNMENT, EXECUTE ILS OR LOC RWY 23R APPROACH".

REASONS:

1-5. OPERATIONAL REQUEST PER FPT/ATC.

6-7. ATC REQUEST TO INCORPORATE PENDING CHANGE TO FAAO 7110.65.

8-13. CURRENT DOCUMENTATION STANDARDS.

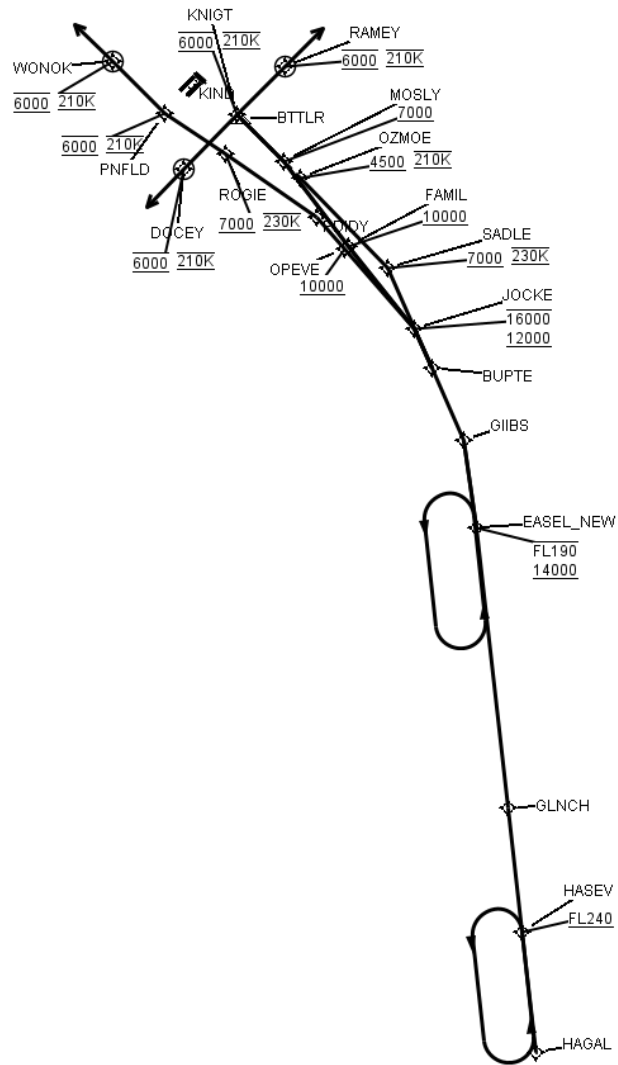
14-15. NO LONGER REQUIRED.

16-18. FPT/ATC REQUESTED.

FEDERAL AVIATION ADMINISTRATION
FLIGHT STANDARDS SERVICE
STANDARD TERMINAL ARRIVAL (STAR)

Bearings, headings, courses, tracks and radials are magnetic. Elevations and altitudes are in feet, MSL. Altitudes are minimum altitudes unless otherwise indicated.
Ceilings are in feet above airport elevation. Distances are in nautical miles. Visibilities are in statute miles or feet RVR unless otherwise indicated.

Arrival Name	Number	STAR Computer Code	Superseded Number	Dated	Effective Date
GIIBS (RNAV)	FOUR	GIIBS.GIIBS4	THREE	07/19/2018	11 JUL 2024
Graphic Depiction 1					



FEDERAL AVIATION ADMINISTRATION
FLIGHT STANDARDS SERVICE
STAR (DATA RECORD)

Arrival Name GIIBS (RNAV)		Number FOUR		STAR Computer Code GIIBS.GIIBS4			Superseded Number THREE		Dated 07/19/2018	Effective Date 11 JUL 2024
FIX/NAVAID	LAT/LONG	C	FO/FB	LEG TYPE	TC	DIST (NM)	ALTITUDE	SPEED	REMARKS	
En Route Transition										
EASEL	390057.69N / 0854246.68W	Y		IF			14000BFL190		EASEL.GIIBS4	
GIIBS	390912.73N / 0854413.34W	Y	FB	TF	352.24	08.32				
En Route Transition										
HAGAL	381111.38N / 0853522.72W	Y		IF					HAGAL.GIIBS4	
HASEV	382242.86N / 0853704.79W	Y	FB	TF	353.37	11.59	AT/ABOVE FL240			
GLNCH	383425.78N / 0853851.88W	Y	FB	TF	353.18	11.79				
EASEL	390057.69N / 0854246.68W	Y	FB	TF	353.44	26.68	14000BFL190			
GIIBS	390912.73N / 0854413.34W	Y	FB	TF	352.24	08.32				
Common Route										
GIIBS	390912.73N / 0854413.34W	Y		IF					GIIBS.GIIBS4	
BUPTE	391609.49N / 0854812.92W	Y	FB	TF	335.93	07.60				
Runway Transition										
BUPTE	391609.49N / 0854812.92W	Y		IF						
JOCKE	391950.34N / 0855020.15W	Y	FB	TF	335.90	04.03	12000B16000			
FAMIL	392738.80N / 0855829.08W	Y	FB	TF	321.04	10.04	AT/ABOVE 10000			
MOSLY	393544.12N / 0860625.94W	Y	FB	TF	322.77	10.16	AT/ABOVE 7000			
KNIGT	394006.75N / 0861209.40W	Y	FB	TF	314.71	06.22	AT 6000	AT 210K		
DOCEY	393457.16N / 0861845.23W	Y	FO	TF	224.71	07.25	AT 6000	AT 210K		
KIND:RWY 5L,RWY 5R				FM	224.71					
Runway Transition										
BUPTE	391609.49N / 0854812.92W	Y		IF						
JOCKE	391950.34N / 0855020.15W	Y	FB	TF	335.90	04.03	12000B16000			
OPEVE	392722.63N / 0855853.62W	Y	FB	TF	318.67	10.04	AT/ABOVE 10000			
PDIDY	393026.82N / 0860223.27W	Y	FB	TF	318.60	04.09				

FEDERAL AVIATION ADMINISTRATION
FLIGHT STANDARDS SERVICE
STAR (DATA RECORD)

Arrival Name GIIBS (RNAV)		Number FOUR		STAR Computer Code GIIBS.GIIBS4		Superseded Number THREE		Dated 07/19/2018	Effective Date 11 JUL 2024
FIX/NAVAID	LAT/LONG	C	FO/FB	LEG TYPE	TC	DIST (NM)	ALTITUDE	SPEED	REMARKS
ROGIE	393622.18N / 0861338.40W	Y	FB	TF	304.27	10.52	AT/ABOVE 7000	AT 230K	
PNFLD	394017.94N / 0862108.52W	Y	FB	TF	304.16	07.00	AT 6000	AT 210K	
WONOK	394512.96N / 0862736.21W	Y	FO	TF	314.61	07.00	AT 6000	AT 210K	
KIND:RWY 14				FM	314.61				
Runway Transition									
BUPTE	391609.49N / 0854812.92W	Y		IF					
JOCKE	391950.34N / 0855020.15W	Y	FB	TF	335.90	04.03	12000B16000		
FAMIL	392738.80N / 0855829.08W	Y	FB	TF	321.04	10.04	AT/ABOVE 10000		
MOSLY	393544.12N / 0860625.94W	Y	FB	TF	322.77	10.16	AT/ABOVE 7000		
KNIGT	394006.75N / 0861209.40W	Y	FB	TF	314.71	06.22	AT 6000	AT 210K	
RAMEY	394444.58N / 0860614.30W	Y	FO	TF	044.60	06.50	AT 6000	AT 210K	
KIND:RWY 23L,RWY 23R				FM	044.60				
Runway Transition									
BUPTE	391609.49N / 0854812.92W	Y		IF					
SADLE	392538.17N / 0855341.32W	Y	FB	TF	335.88	10.38	AT/ABOVE 7000	AT 230K	
OZMOE	393409.13N / 0860420.96W	Y	FB	TF	315.93	11.85	AT/ABOVE 4500	AT 210K	
KIND:RWY 32									