

FEDERAL AVIATION ADMINISTRATION
 FLIGHT STANDARDS SERVICE
 STANDARD TERMINAL ARRIVAL (STAR)

Bearings, headings, courses, tracks and radials are magnetic. Elevations and altitudes are in feet, MSL. Altitudes are minimum altitudes unless otherwise indicated. Ceilings are in feet above airport elevation. Distances are in nautical miles. Visibilities are in statute miles or feet RVR unless otherwise indicated.

Arrival Name ROKNN (RNAV)	Number FOUR	STAR Computer Code ROKNN.ROKNN4	Superseded Number THREE	Dated 03/26/2020	Effective Date 07 Aug 2025
-------------------------------------	-----------------------	---	-----------------------------------	----------------------------	--------------------------------------

TRANSITION ROUTES:

Transition Name	Transition Computer Codes	From FIX/NAVAID	To FIX/NAVAID	Course	Distance	MEA	MOCA	MAA	Crossing Altitudes / Fixes
DRUGA	DRUGA.ROKNN4	DRUGA	DRUGA						
			ACIDS	048.43	38.99	10000	2900		
			HEADZ	051.67	25.31	10000	2900		BETWEEN 17000 AND FL230
			ROKNN	051.66	36.98	9000	2900		BETWEEN 10000 AND 17000
TALKN	TALKN.ROKNN4	TALKN	TALKN						
			ACIDS	090.79	39.96	10000	2900		
			HEADZ	051.67	25.31	10000	2900		BETWEEN 17000 AND FL230
			ROKNN	051.66	36.98	9000	2900		BETWEEN 10000 AND 17000

ARRIVAL ROUTE DESCRIPTION:

CLE: FROM ROKNN ON TRACK 052.00/10.00 TO CROSS DEVOH BETWEEN 8000 AND 14000.

LANDING CLE RWY 6L: FROM DEVOH ON TRACK 049.97/4.14 TO CROSS KINCS BETWEEN 7000 AND 9000, THEN ON TRACK 049.05/9.77 TO CROSS KWENE AT OR ABOVE 6000 AND AT 210 KIAS. EXPECT ILS, RNAV (RNP) OR RNAV (GPS) APPROACH FROM KWENE.

LANDING CLE RWY 6R: FROM DEVOH ON TRACK 049.97/4.14 TO CROSS KINCS BETWEEN 7000 AND 9000, THEN ON TRACK 050.51/10.11 TO CROSS RUHSH AT OR ABOVE 6000 AND AT 210 KIAS. EXPECT ILS, RNAV (RNP) OR RNAV (GPS) APPROACH FROM RUHSH.

LANDING CLE RWY 24L: FROM DEVOH ON TRACK 052.91/20.42 TO CROSS SEPLN BETWEEN 8000 AND 10000, THEN ON TRACK 078.66/14.68 TO CROSS CLAPT AT 7000 AND AT 210 KIAS, THEN ON HEADING 058.00. EXPECT RNAV (RNP) APPROACH FROM CLAPT OR RADAR VECTORS TO FINAL APPROACH COURSE.

LANDING CLE RWY 24R: FROM DEVOH ON TRACK 052.91/20.42 TO CROSS SEPLN BETWEEN 8000 AND 10000, THEN ON TRACK 035.97/14.49 TO CROSS DAHOO AT 7000 AND AT 210 KIAS, THEN ON HEADING 058.00. EXPECT RNAV (RNP) APPROACH FROM DAHOO OR RADAR VECTORS TO FINAL APPROACH COURSE.

LANDING CLE RWY 28: FROM DEVOH ON TRACK 052.91/20.42 TO CROSS SEPLN BETWEEN 8000 AND 10000, THEN ON TRACK 086.53/10.25 TO GNDAY, THEN ON TRACK 105.70/6.08 TO CROSS SWEEE AT 7000 AND AT 210 KIAS, THEN ON HEADING 101.00. EXPECT RADAR VECTORS TO FINAL APPROACH COURSE.

LANDING LPR/LNN/CGF/BKL: FROM ROKNN ON TRACK 052.00/10.00 TO CROSS DEVOH BETWEEN 8000 AND 14000, THEN ON TRACK 052.93/14.18 TO CROSS MICKJ AT 8000, THEN ON TRACK 052.93. EXPECT RADAR VECTORS TO FINAL APPROACH COURSE.

PBN REQUIREMENT NOTES:

RNAV 1 - DME/DME/IRU OR GPS

EQUIPMENT REQUIREMENT NOTES:

RADAR REQUIRED

PROCEDURAL DATA NOTES:

NOTE: JET AIRCRAFT EXPECT "DESCEND VIA" CLEARANCE FROM CLEVELAND CENTER.

NOTE: CLE LANDING SOUTH: USE RWY 24R TRANSITION. EXPECT RUNWAY ASSIGNMENT FROM CLEVELAND APP CON NO LATER THAN ROKNN.

NOTE: CLE LANDING NORTH: USE RWY 6L TRANSITION. EXPECT RUNWAY ASSIGNMENT FROM CLEVELAND APP CON NO LATER THAN ROKNN.

FIXES AND/OR HOLDING PATTERNS:

CHART HOLDING AT ROKNN: HOLD SW, RT, 051.66 INBOUND, 10 NM LEGS.



FEDERAL AVIATION ADMINISTRATION
 FLIGHT STANDARDS SERVICE
 STANDARD TERMINAL ARRIVAL (STAR)

Bearings, headings, courses, tracks and radials are magnetic. Elevations and altitudes are in feet, MSL. Altitudes are minimum altitudes unless otherwise indicated.
 Ceilings are in feet above airport elevation. Distances are in nautical miles. Visibilities are in statute miles or feet RVR unless otherwise indicated.

Arrival Name	Number	STAR Computer Code	Superseded Number	Dated	Effective Date
ROKNN (RNAV)	FOUR	ROKNN.ROKNN4	THREE	03/26/2020	07 Aug 2025

CHANGES:

1. TRANSITION ROUTES: ALL REFERENCES TO DEAHD WP NAME CHANGED TO ACIDS.
2. TRANSITION ROUTES: ALL REFERECES TO HEADZ FIX MOCAS CHANGED FROM 2500 TO 2900.
3. TRANSITION ROUTES: TRANSITION TALKN AT ACIDS FIX MOCAS CHANGED FROM 2700 TO 2900.
4. MOVED RADAR REQUIRED FROM PROCEDURAL DATA NOTES TO EQUIPMENT REQUIREMENT NOTES, COMBINED NOTE RNAV AND DME/DME/IRU OR GPS REQUIRED UNDER PBN REQUIREMENT NOTES TO RNAV 1 - DME/DME/IRU OR GPS.
5. REMOVED: NOTE: JET AIRCRAFT DESCEND VIA MACH NUMBER UNTIL INTERCEPTING 280 KIAS. MAINTAIN 280 KIAS UNTIL SLOWED BY THE STAR.
6. ADDITIONAL FLIGHT DATA: REMOVED DO NOT CHART MOCAs.
7. REMOVED ALL INSTANCES OF AIRPORT NAME AND K IDENT FROM 17.1 FORM.
8. REMOVED ALL INSTANCES OF OR AS ASSIGNED BY ATC FROM ARRIVAL.

REASONS:

- 1,5. ATC REQUEST.
- 2,3. IAW 8260.3F, 2-2-7D(3).
4. IAW 8260.19J 4-5-3.
6. 8260.19J 4-5-12(B)8.
7. IAW CURRENT DOCUMENTATION STANDARDS.
8. AFS DOES NOT PERMIT THE STATEMENT AFTER A VM LEG.

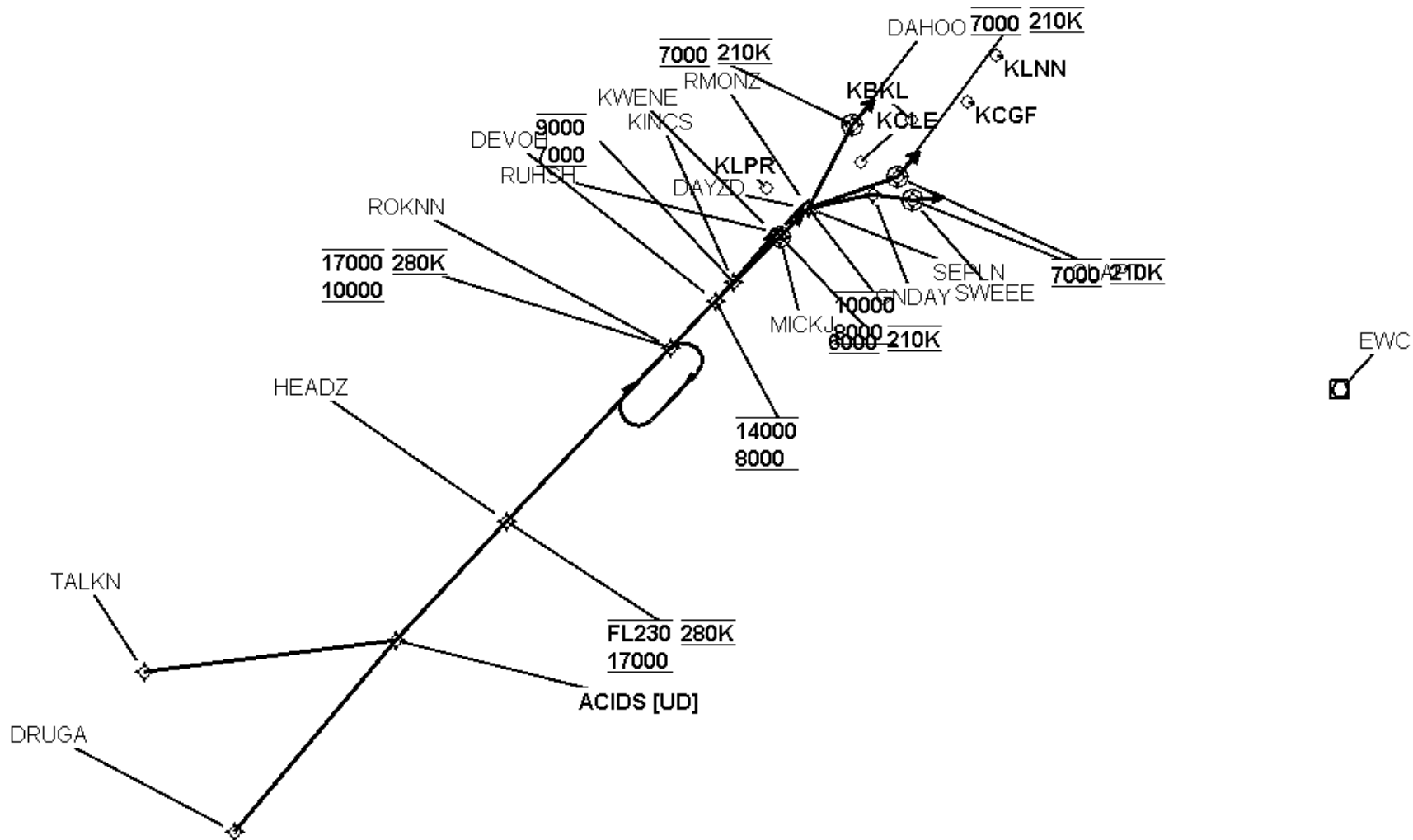


FEDERAL AVIATION ADMINISTRATION
FLIGHT STANDARDS SERVICE
STANDARD TERMINAL ARRIVAL (STAR)

Bearings, headings, courses, tracks and radials are magnetic. Elevations and altitudes are in feet, MSL. Altitudes are minimum altitudes unless otherwise indicated. Ceilings are in feet above airport elevation. Distances are in nautical miles. Visibilities are in statute miles or feet RVR unless otherwise indicated.

Arrival Name	Number	STAR Computer Code	Superseded Number	Dated	Effective Date
ROKNN (RNAV)	FOUR	ROKNN.ROKNN4	THREE	03/26/2020	07 Aug 2025

Graphic Depiction 1

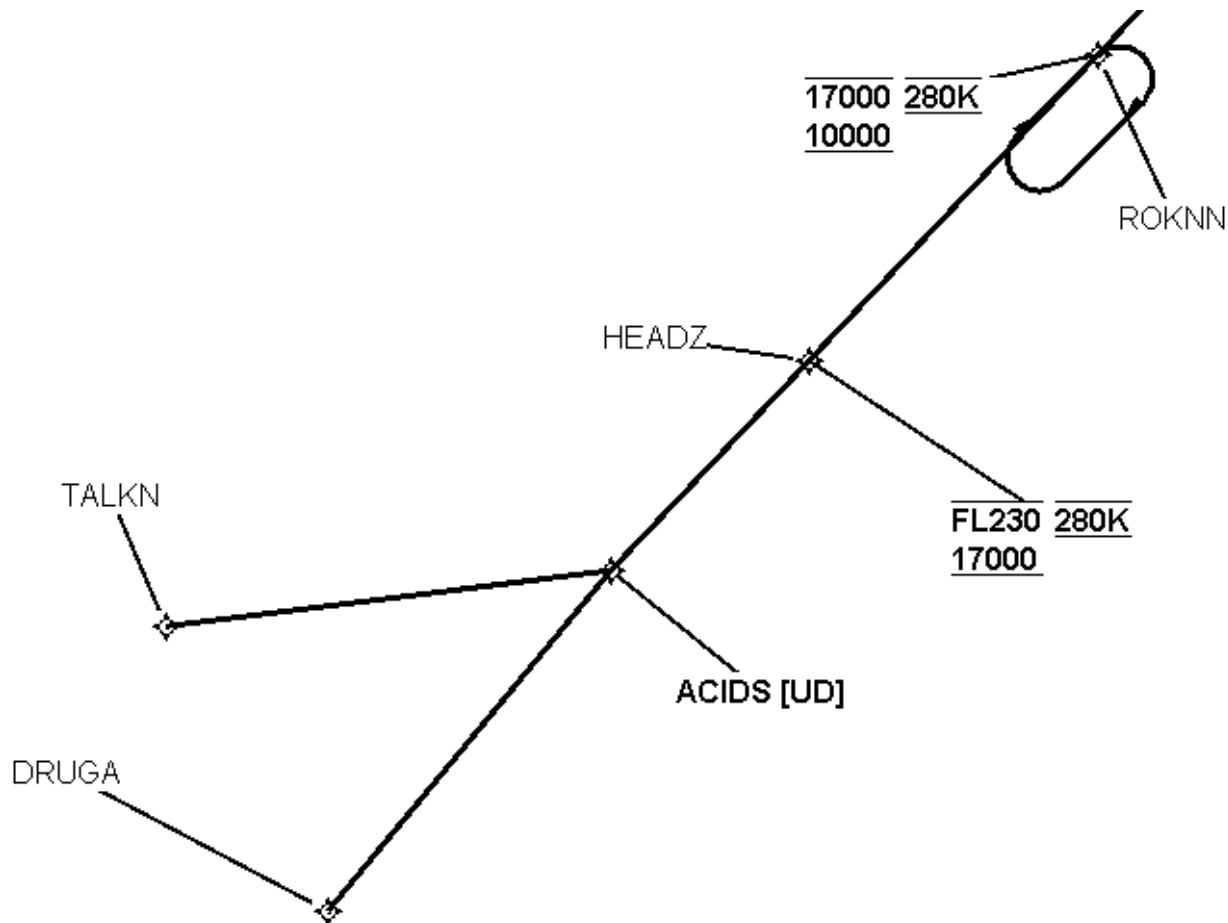


FEDERAL AVIATION ADMINISTRATION
FLIGHT STANDARDS SERVICE
STANDARD TERMINAL ARRIVAL (STAR)

Bearings, headings, courses, tracks and radials are magnetic. Elevations and altitudes are in feet, MSL. Altitudes are minimum altitudes unless otherwise indicated.
Ceilings are in feet above airport elevation. Distances are in nautical miles. Visibilities are in statute miles or feet RVR unless otherwise indicated.

Arrival Name	Number	STAR Computer Code	Superseded Number	Dated	Effective Date
ROKNN (RNAV)	FOUR	ROKNN.ROKNN4	THREE	03/26/2020	07 Aug 2025

Graphic Depiction 2

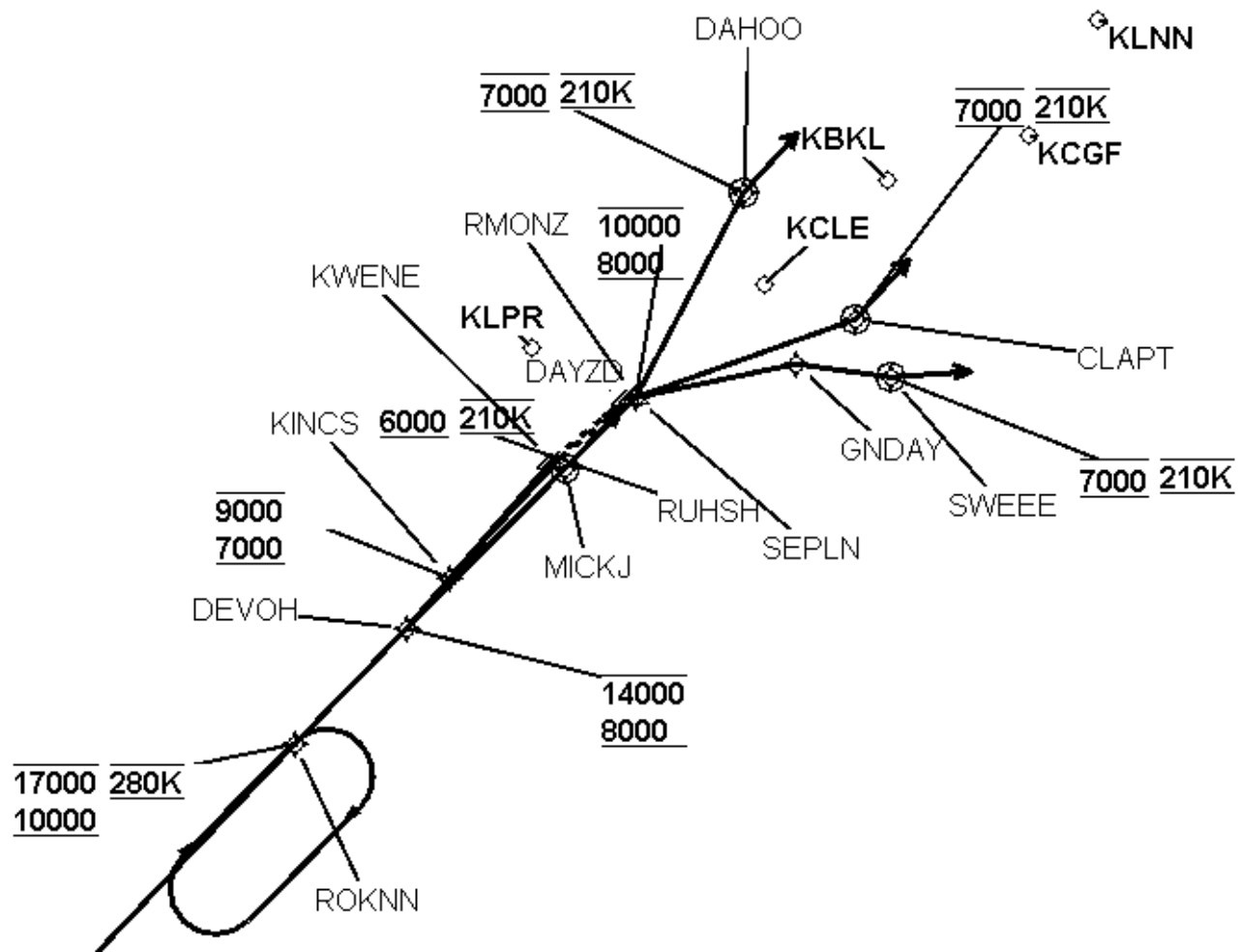


FEDERAL AVIATION ADMINISTRATION
FLIGHT STANDARDS SERVICE
STANDARD TERMINAL ARRIVAL (STAR)

Bearings, headings, courses, tracks and radials are magnetic. Elevations and altitudes are in feet, MSL. Altitudes are minimum altitudes unless otherwise indicated.
Ceilings are in feet above airport elevation. Distances are in nautical miles. Visibilities are in statute miles or feet RVR unless otherwise indicated.

Arrival Name	Number	STAR Computer Code	Superseded Number	Dated	Effective Date
ROKNN (RNAV)	FOUR	ROKNN.ROKNN4	THREE	03/26/2020	07 Aug 2025

Graphic Depiction 3



FEDERAL AVIATION ADMINISTRATION
 FLIGHT STANDARDS SERVICE
 STAR (DATA RECORD)

Arrival Name ROKNN (RNAV)	Number FOUR	STAR Computer Code ROKNN.ROKNN4		Superseded Number THREE		Dated 03/26/2020	Effective Date 07 Aug 2025		
<u>FIX/NAVAID</u>	<u>LAT/LONG</u>	<u>C</u>	<u>FO/FB</u>	<u>LEG TYPE</u>	<u>TC</u>	<u>DIST (NM)</u>	<u>ALTITUDE</u>	<u>SPEED</u>	<u>REMARKS</u>
En Route Transition									
DRUGA	394116.70N / 0835948.61W	Y		IF					DRUGA.ROKNN4
ACIDS	401054.17N / 0832649.43W	Y	FB	TF	040.43	38.99			
HEADZ	402910.99N / 0830355.31W	Y	FB	TF	043.67	25.31	17000BFL230	AT 280K	
ROKNN	405552.34N / 0823014.16W	Y	FB	TF	043.66	36.98	10000B17000	AT 280K	
En Route Transition									
TALKN	400604.49N / 0841833.13W	Y		IF					TALKN.ROKNN4
ACIDS	401054.17N / 0832649.43W	Y	FB	TF	082.79	39.96			
HEADZ	402910.99N / 0830355.31W	Y	FB	TF	043.67	25.31	17000BFL230	AT 280K	
ROKNN	405552.34N / 0823014.16W	Y	FB	TF	043.66	36.98	10000B17000	AT 280K	
Common Route									
ROKNN	405552.34N / 0823014.16W	Y		IF			10000B17000	AT 280K	ROKNN.ROKNN4
DEVOH	410303.73N / 0822103.41W	Y	FB	TF	044.00	10.00	8000B14000		
Common Route									
ROKNN	405552.34N / 0823014.16W	Y		IF			10000B17000	AT 280K	ROKNN.ROKNN4
DEVOH	410303.73N / 0822103.41W	Y	FB	TF	044.00	10.00	8000B14000		
MICKJ	411305.78N / 0820746.97W	Y	FO	TF	044.93	14.18	AT 8000		
KBKL,KCGF,KLNN, KLPR				FM	044.93				
Runway Transition									
DEVOH	410303.73N / 0822103.41W	Y		IF			8000B14000		
KINCS	410608.29N / 0821723.91W	Y	FB	TF	041.97	04.14	7000B9000		
KWENE	411330.51N / 0820853.51W	Y	FB	TF	041.05	09.77	AT/ABOVE 6000	AT 210K	
KCLE:RWY 6L									



FEDERAL AVIATION ADMINISTRATION
 FLIGHT STANDARDS SERVICE
 STAR (DATA RECORD)

Arrival Name ROKNN (RNAV)	Number FOUR	STAR Computer Code ROKNN.ROKNN4		Superseded Number THREE		Dated 03/26/2020	Effective Date 07 Aug 2025		
<u>FIX/NAVAID</u>	<u>LAT/LONG</u>	<u>C</u>	<u>FO/FB</u>	<u>LEG TYPE</u>	<u>TC</u>	<u>DIST (NM)</u>	<u>ALTITUDE</u>	<u>SPEED</u>	<u>REMARKS</u>
Runway Transition									
DEVOH	410303.73N / 0822103.41W	Y		IF			8000B14000		
KINCS	410608.29N / 0821723.91W	Y	FB	TF	041.97	04.14	7000B9000		
RUHSH	411335.22N / 0820820.78W	Y	FB	TF	042.51	10.11	AT/ABOVE 6000	AT 210K	
KCLE:RWY 6R									
Runway Transition									
DEVOH	410303.73N / 0822103.41W	Y		IF			8000B14000		
SEPLN	411730.33N / 0820155.89W	Y	FB	TF	044.91	20.42	8000B10000		
CLAPT	412220.63N / 0814332.22W	Y	FO	TF	070.66	14.68	AT 7000	AT 210K	
KCLE:RWY 24L									
Runway Transition									
DEVOH	410303.73N / 0822103.41W	Y		IF			8000B14000		
SEPLN	411730.33N / 0820155.89W	Y	FB	TF	044.91	20.42	8000B10000		
DAHOO	413018.29N / 0815253.14W	Y	FO	TF	027.97	14.49	AT 7000	AT 210K	
KCLE:RWY 24R									
Runway Transition									
DEVOH	410303.73N / 0822103.41W	Y		IF			8000B14000		
SEPLN	411730.33N / 0820155.89W	Y	FB	TF	044.91	20.42	8000B10000		
GNDAY	411931.94N / 0814835.92W	Y	FB	TF	078.53	10.25			
SWEEE	411842.74N / 0814035.88W	Y	FO	TF	097.70	06.08	AT 7000	AT 210K	
KCLE:RWY 28									

