

FEDERAL AVIATION ADMINISTRATION
FLIGHT STANDARDS SERVICE
STANDARD TERMINAL ARRIVAL (STAR)

Bearings, headings, courses, tracks and radials are magnetic. Elevations and altitudes are in feet, MSL. Altitudes are minimum altitudes unless otherwise indicated.
Ceilings are in feet above airport elevation. Distances are in nautical miles. Visibilities are in statute miles or feet RVR unless otherwise indicated.

Arrival Name	Number	STAR Computer Code	Superseded Number	Dated	Effective Date
BDEGA (RNAV)	FOUR	LOZIT.BDEGA4	THREE	9/13/2018	11 Jul 2024

TRANSITION ROUTES:

Transition Name	Transition Computer Codes	From FIX/NAVAID	To FIX/NAVAID	Course	Distance	MEA	MOCA	MAA	Crossing Altitudes / Fixes
AMAKR	AMAKR.BDEGA4	AMAKR	AMAKR						
			QUINN	120.89	41.04	13000	4700		BETWEEN FL240 AND FL280
			BGGLO	121.21	24.50	11000	4500		BETWEEN FL190 AND FL230
			LOZIT	153.06	20.00	11000	4300		BETWEEN 14000 AND 16000
LEGGS	LEGGS.BDEGA4	LEGGS	LEGGS						
			PYLLE	219.32	78.94	15000	5600		BETWEEN FL240 AND FL280
			BGGLO	205.12	24.50	11000	5000		BETWEEN FL190 AND FL230
			LOZIT	153.06	20.00	11000	4300		BETWEEN 14000 AND 16000
MLBEC	MLBEC.BDEGA4	MLBEC	MLBEC						AT/ABOVE FL290
			JONNE	152.93	15.50	15000	5700		BETWEEN FL240 AND FL280
			BGGLO	152.96	24.50	11000	4300		BETWEEN FL190 AND FL230
			LOZIT	153.06	20.00	11000	4300		BETWEEN 14000 AND 16000
MRRLO	MRRLO.BDEGA4	MRRLO	MRRLO						AT/ABOVE FL290
			MSCAT	178.50	16.81	11000	6600		BETWEEN FL240 AND FL280
			BGGLO	178.47	24.50	11000	5500		BETWEEN FL190 AND FL230
			LOZIT	153.06	20.00	11000	4300		BETWEEN 14000 AND 16000

ARRIVAL ROUTE DESCRIPTION:

FROM LOZIT ON TRACK 125.89/5.98 TO CROSS BDEGA AT OR BELOW 13000.

LANDING RWY 1R, RWY 28L/R: FROM BDEGA ON TRACK 125.94/7.00 TO CROSS CORKK AT 11000 AND AT 250 KIAS, THEN ON TRACK 125.77/9.08 TO CROSS BRIXX AT 11000, THEN ON TRACK 140.00. EXPECT RADAR VECTORS TO FINAL APPROACH COURSE.

PBN REQUIREMENT NOTES:

RNAV 1 - DME/DME/IRU OR GPS

EQUIPMENT REQUIREMENT NOTES:

RADAR REQUIRED

PROCEDURAL DATA NOTES:

QUALITY
14
CHECKED

FEDERAL AVIATION ADMINISTRATION
FLIGHT STANDARDS SERVICE
STANDARD TERMINAL ARRIVAL (STAR)

Bearings, headings, courses, tracks and radials are magnetic. Elevations and altitudes are in feet, MSL. Altitudes are minimum altitudes unless otherwise indicated.
Ceilings are in feet above airport elevation. Distances are in nautical miles. Visibilities are in statute miles or feet RVR unless otherwise indicated.

Arrival Name	Number	STAR Computer Code	Superseded Number	Dated	Effective Date
BDEGA (RNAV)	FOUR	LOZIT.BDEGA4	THREE	9/13/2018	11 Jul 2024

FIXES AND/OR HOLDING PATTERNS:

CHART HOLDING AT AMAKR: HOLD NW, RT, 120.89 INBOUND, 10 NM LEGS.
CHART HOLDING AT BGGLO: HOLD NW, RT, 152.97 INBOUND, 10 NM LEGS.
CHART HOLDING AT LOZIT: HOLD NW, RT, 153.06 INBOUND, 10 NM LEGS.
CHART HOLDING AT MLBEC: HOLD NW, RT, 152.93 INBOUND, 10 NM LEGS.
CHART: CBRNA.

COMMUNICATIONS:

CHART: OAKLAND CENTER.
CHART: NORCAL APP CON.
CHART: SAN FRANCISCO TWR.
CHART: SAN FRANCISCO GND CON.

AIRPORTS SERVED:

<u>AIRPORT ID</u>	<u>CITY</u>	<u>STATE</u>
KSFO	SAN FRANCISCO	CA

LOST COMMUNICATIONS PREFERENCES:**REMARKS:****ADDITIONAL FLIGHT DATA:**

DME/DME ASSESSMENT: SAT (RNP 2.0)
MAG VAR: KSFO 14E/2015.
CHART AT BRIXX TERMINUS: KSFO LDG RWY 1R, RWY 28L/R.

<u>FLIGHT INSPECTED BY:</u>	<i>Digitally signed by</i>	<u>ORGANIZATION:</u>	<u>DATE:</u>		
THOMAS E MOLOKIE	ERIC N SUSKI May 23, 2024	FPO	05/21/2024	Flight Inspected Signature:	_____
<u>DEVELOPED BY:</u>	<i>Digitally signed by</i>				
CHARLES HIRST	ERIC N SUSKI Nov 01, 2023	AJV-A431	10/04/2023	Developed By Signature:	_____
<u>APPROVED BY:</u>	<i>Digitally signed by</i>				
ERIC SUSKI, MANAGER	ERIC N SUSKI Nov 01, 2023	AJV-A431		Approved By Signature:	_____

QUALITY
14
CHECKED

FEDERAL AVIATION ADMINISTRATION
FLIGHT STANDARDS SERVICE
STANDARD TERMINAL ARRIVAL (STAR)

Bearings, headings, courses, tracks and radials are magnetic. Elevations and altitudes are in feet, MSL. Altitudes are minimum altitudes unless otherwise indicated.
Ceilings are in feet above airport elevation. Distances are in nautical miles. Visibilities are in statute miles or feet RVR unless otherwise indicated.

Arrival Name	Number	STAR Computer Code	Superseded Number	Dated	Effective Date
BDEGA (RNAV)	FOUR	LOZIT.BDEGA4	THREE	9/13/2018	11 Jul 2024

CHANGES:

1. ADDED CHART AT BRIXX TERMINUS: KSFO LDG RWY 1R, 28L/R.
2. CHANGED ALTITUDE RESTRICTION AT LOZIT WP FROM AOB 16000 AT 280K TO AOA 14000 AOB 16000 AT 280K.
3. CHANGED COMMON ROUTE FROM LOZIT-BDEGA-CORKK-BRIXX TO LOZIT-BDEGA.
4. CHANGED ROUTE BDEGA-CORKK-BRIXX TO A RUNWAY TRANSITION AND ASSIGNED RWY 1R & 28L/R.
5. MOVED QUINN WP 2.98 NM NORTHWEST.
6. MOVED JONNE WP 4.42 NM NORTH.
7. MOVED MSCAT WP 3.5 NM NORTH.
8. MOVED PYLLE WP 5.35 NM NORTH.
9. REMOVED PEENO TRANSITION.
10. REMOVED RECOMMENDED NAVAID: EHF VORTAC.
11. REMOVED MEAS/MOCAS FROM COMMON ROUTE.
12. RAISED MEA ON LEGGS TO PYLLE SEGMENT FROM 11000 TO 15000.
13. RAISED MEA ON MLBEC TO JONNE SEGMENT FROM 11000 TO 15000.
14. ADDED RNAV 1-DME/DME/IRU OR GPS REQUIRED TO PBN REQUIREMENT NOTES.
15. ADDED RADAR REQUIRED TO EQUIPMENT REQUIREMENT NOTES.
16. CHANGED MOCA ON AMAKR TO QUINN SEGMENT FROM 4600 TO 4700.
17. CHANGED MOCA ON JONNE TO BGGLO SEGMENT FROM 3800 TO 4300.
18. CHANGED MOCA ON MSCAT TO BGGLO SEGMENT FROM 4500 TO 5400.

REASONS:

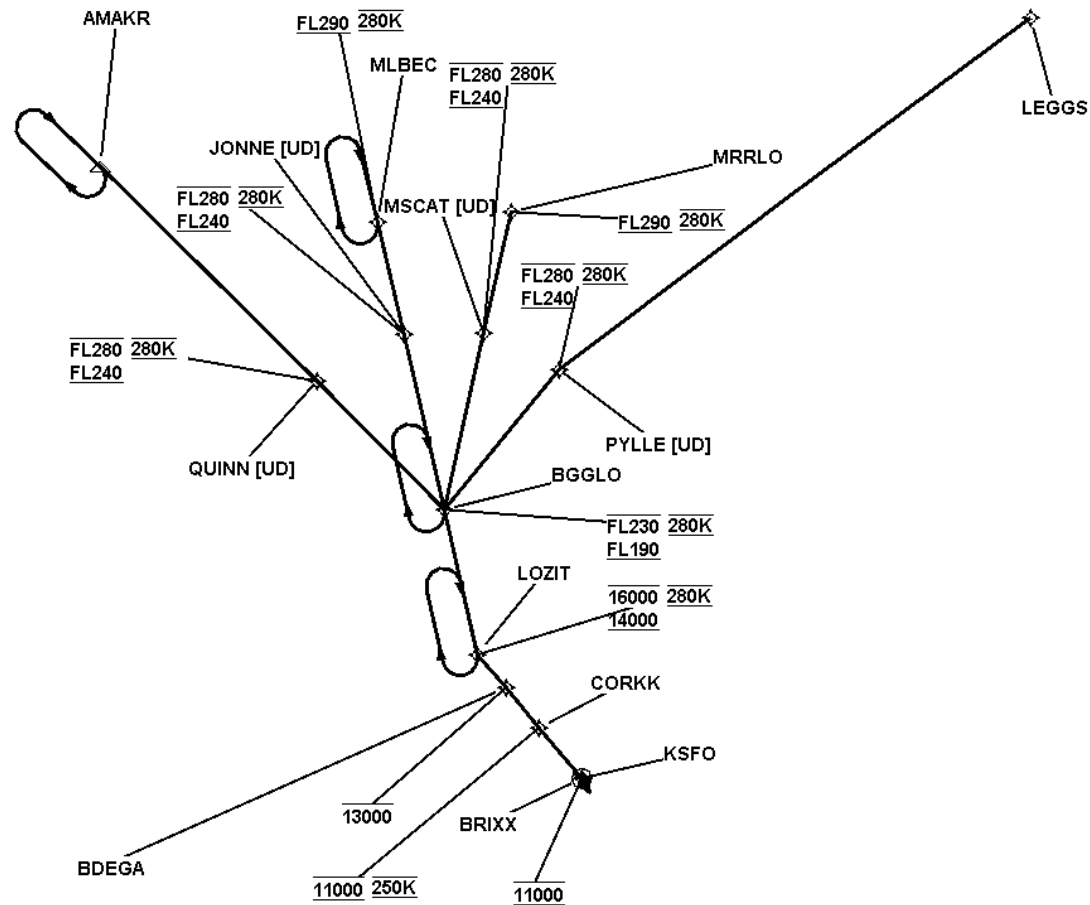
1. IAW FAAO 8260.19I 4-5-2 h (2) STAR TERMINUS DATA.
2. PER DESCENT GRADIENT CRITERIA 8260.3E 2-2-8.
3. ATC REQUEST TO RETAIN BDEGA STAR NAME BY AMENDING COMMON ROUTE.
4. ATC REQUEST TO ADD RUNWAY TRANSITIONS.
- 5-9. ATC REQUEST TO MATCH STLER STAR.
10. NOT REQUIRED IAW 8260.19I, 4-5-12 (C).
11. IAW 8260.19I, 4-5-12 (B)(8).
- 12-13. NEW DME/DME ASSESSMENT CONDUCTED. ALTITUDES RAISED FOR DME/DME COVERAGE.
- 14-15. IAW 8260.19I DOCUMENTATION STANDARDS.
- 16-18. NEW TERRAIN AND OBSTACLE EVALUATION.



FEDERAL AVIATION ADMINISTRATION
FLIGHT STANDARDS SERVICE
STANDARD TERMINAL ARRIVAL (STAR)

Bearings, headings, courses, tracks and radials are magnetic. Elevations and altitudes are in feet, MSL. Altitudes are minimum altitudes unless otherwise indicated.
Ceilings are in feet above airport elevation. Distances are in nautical miles. Visibilities are in statute miles or feet RVR unless otherwise indicated.

Arrival Name	Number	STAR Computer Code	Superseded Number	Dated	Effective Date
BDEGA (RNAV)	FOUR	LOZIT.BDEGA4	THREE	9/13/2018	11 Jul 2024
Graphic Depiction 1					



FEDERAL AVIATION ADMINISTRATION
FLIGHT STANDARDS SERVICE
STAR (DATA RECORD)

Arrival Name BDEGA (RNAV)	Number FOUR	STAR Computer Code LOZIT.BDEGA4		Superseded Number THREE		Dated 9/13/2018		Effective Date 11 Jul 2024	
FIX/NAVAID	LAT/LONG	C	FO/FB	LEG TYPE	TC	DIST (NM)	ALTITUDE	SPEED	REMARKS
En Route Transition									
AMAKR	390000.00N / 1234500.00W	Y		IF					AMAKR.BDEGA4
QUINN	383054.84N / 1230757.35W	Y	FB	TF	134.89	41.04	FL240BFL280	AT 280K	
BGGLO	381328.52N / 1224603.02W	Y	FB	TF	135.21	24.50	FL190BFL230	AT 280K	
LOZIT	375357.57N / 1224023.50W	Y	FB	TF	167.06	20.00	14000B16000	AT 280K	
En Route Transition									
LEGGS	392011.85N / 1210544.75W	Y		IF					LEGGS.BDEGA4
PYLLE	383231.77N / 1222625.93W	Y	FB	TF	233.32	78.94	FL240BFL280	AT 280K	
BGGLO	381328.52N / 1224603.02W	Y	FB	TF	219.12	24.50	FL190BFL230	AT 280K	
LOZIT	375357.57N / 1224023.50W	Y	FB	TF	167.06	20.00	14000B16000	AT 280K	
En Route Transition									
MLBEC	385229.18N / 1225732.36W	Y		IF			AT/ABOVE FL290	AT 280K	MLBEC.BDEGA4
JONNE	383722.31N / 1225303.96W	Y	FB	TF	166.93	15.50	FL240BFL280	AT 280K	
BGGLO	381328.52N / 1224603.02W	Y	FB	TF	166.96	24.50	FL190BFL230	AT 280K	
LOZIT	375357.57N / 1224023.50W	Y	FB	TF	167.06	20.00	14000B16000	AT 280K	
En Route Transition									
MRRLO	385351.17N / 1223441.64W	Y		IF			AT/ABOVE FL290	AT 280K	MRRLO.BDEGA4
MSCAT	383725.53N / 1223920.22W	Y	FB	TF	192.50	16.81	FL240BFL280	AT 280K	
BGGLO	381328.52N / 1224603.02W	Y	FB	TF	192.47	24.50	FL190BFL230	AT 280K	
LOZIT	375357.57N / 1224023.50W	Y	FB	TF	167.06	20.00	14000B16000	AT 280K	
Common Route									
LOZIT	375357.57N / 1224023.50W	Y		IF			14000B16000	AT 280K	LOZIT.BDEGA4
BDEGA	374922.89N / 1223531.92W	Y	FB	TF	139.89	05.98	AT/BELOW 13000		

FEDERAL AVIATION ADMINISTRATION
FLIGHT STANDARDS SERVICE
STAR (DATA RECORD)

Arrival Name	Number		STAR Computer Code		Superseded Number		Dated		Effective Date
BDEGA (RNAV)	FOUR		LOZIT.BDEGA4		THREE		9/13/2018		11 Jul 2024
<u>FIX/NAVAID</u>	<u>LAT/LONG</u>	<u>C</u>	<u>FO/FB</u>	<u>LEG TYPE</u>	<u>TC</u>	<u>DIST (NM)</u>	<u>ALTITUDE</u>	<u>SPEED</u>	<u>REMARKS</u>
Runway Transition									
BDEGA	374922.89N / 1223531.92W	Y		IF			AT/BELOW 13000		
CORKK	374400.92N / 1222951.18W	Y	FB	TF	139.94	07.00	AT 11000	AT 250K	
BRIXX	373704.24N / 1222228.30W	Y	FO	TF	139.77	09.08	AT 11000		
KSFO:RWY 1R,RWY 28L,RWY 28R				FM	154.00				