

This is a **CORRECTED COPY** of the procedure previously published in NFDD 167.

FEDERAL AVIATION ADMINISTRATION
FLIGHT STANDARDS SERVICE
STANDARD TERMINAL ARRIVAL (STAR)

Bearings, headings, courses, tracks and radials are magnetic. Elevations and altitudes are in feet, MSL. Altitudes are minimum altitudes unless otherwise indicated. Ceilings are in feet above airport elevation. Distances are in nautical miles. Visibilities are in statute miles or feet RVR unless otherwise indicated.

Arrival Name SCOLA (RNAV)	Number ONE	STAR Computer Code SCOLA.SCOLA1	Superseded Number NONE	Dated	Effective Date 11/03/2022
-------------------------------------	----------------------	---	----------------------------------	-------	------------------------------

TRANSITION ROUTES:

Transition Name	Transition Computer Codes	From FIX/NAVAID	To FIX/NAVAID	Course	Distance	MEA	MOCA	MAA	Crossing Altitudes / Fixes
KENNO	KENNO.SCOLA1	KENNO	KENNO						
			RUSME	306.57	15.45	11600			
			GRAFT	314.85	65.43	11600			
			SCOLA	302.94	26.59	11400	10300		BETWEEN FL240 AND FL280
MINA	MVA.SCOLA1	MVA VORTAC	MVA VORTAC						
			SCOLA	276.38	30.82	11400	10600		BETWEEN FL240 AND FL280

ARRIVAL ROUTE DESCRIPTION:

FROM SCOLA ON TRACK 302.80/28.20 TO CROSS TEXSS AT OR ABOVE 17000, THEN ON TRACK 302.53/6.05 TO CROSS HLDMM AT OR ABOVE 16000 AND AT OR BELOW 280 KIAS, THEN ON TRACK 302.54/17.63 TO CROSS CHIME BETWEEN 12000 AND 13000 AND AT 250 KIAS, THEN ON TRACK 311.12/10.47 TO CROSS KLOCK AT 10000 AND AT 210 KIAS, THEN ON HEADING 333.00. EXPECT ASSIGNED INSTRUMENT APPROACH FOR RWY 17L/R OR RADAR VECTORS TO FINAL APPROACH COURSE.

PBN REQUIREMENT NOTES:

RNAV 1 - GPS

EQUIPMENT REQUIREMENT NOTES:

RADAR REQUIRED

PROCEDURAL DATA NOTES:

FIXES AND/OR HOLDING PATTERNS:

COMMUNICATIONS:

CHART: NORCAL APP CON.

CHART: RNO TOWER.

AIRPORTS SERVED:

<u>AIRPORT ID</u>	<u>CITY</u>	<u>STATE</u>
KRNO	RENO	NV

LOST COMMUNICATIONS PREFERENCES:

REMARKS:

AIRCRAFT EXECUTING ILS 17R, RF TURN REQUIRED AFTER KLOCK (IAF).
TRANSITION ROUTES: KENNO TRANSITION - MOCA AT RUSME AND GRAFT FIXES IS 11600.



FEDERAL AVIATION ADMINISTRATION
 FLIGHT STANDARDS SERVICE
 STANDARD TERMINAL ARRIVAL (STAR)

Bearings, headings, courses, tracks and radials are magnetic. Elevations and altitudes are in feet, MSL. Altitudes are minimum altitudes unless otherwise indicated.
 Ceilings are in feet above airport elevation. Distances are in nautical miles. Visibilities are in statute miles or feet RVR unless otherwise indicated.

Arrival Name	Number	STAR Computer Code	Superseded Number	Dated	Effective Date
SCOLA (RNAV)	ONE	SCOLA.SCOLA1	NONE		11/03/2022

ADDITIONAL FLIGHT DATA:

DME/DME ASSESSMENT: UNSAT.
 MAG VAR: KRNO 13E/2020.
 CHART AT KLOCK TERMINUS: KRNO LDG RWY 17L/R.
 CHART: CAUTION: INTENSE GLIDER ACTIVITY TO FL180.

FLIGHT INSPECTED BY:

PENDING

ORGANIZATION: **DATE:**

Flight Inspected Signature:

Digitally signed by

ERIC N SUSKI

Aug 17, 2022

DEVELOPED BY:

MICHAEL GALVAN

OAKLAND ARTCC 7/12/2022

Developed By Signature:

Digitally signed by

ERIC N SUSKI

Aug 17, 2022

APPROVED BY:

PAT MULQUEEN

AJV-A440

Approved By Signature:

Digitally signed by

ERIC N SUSKI

Aug 17, 2022

CHANGES:

REASONS:

09/23/2022: THIS IS A CORRECTED COPY OF THE FORM APPROVED ON 09/21/2022.
 1. MOVED 11600 MOCA FROM TRANSITION ROUTE LEGS RUSME AND GRAFT TO REMARKS.

Digitally signed by

ERIC N SUSKI

Sep 23, 2022

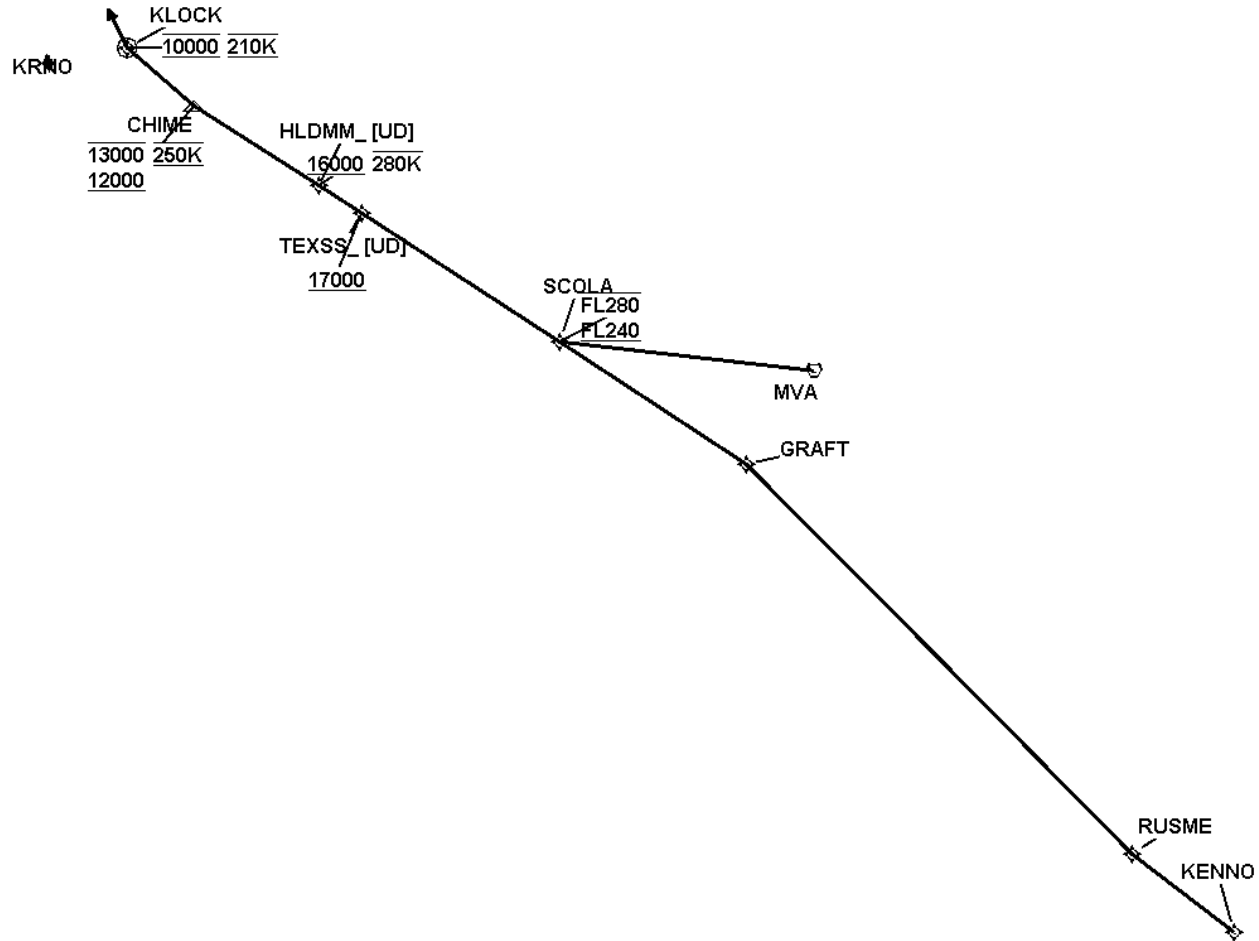


FEDERAL AVIATION ADMINISTRATION
 FLIGHT STANDARDS SERVICE
 STANDARD TERMINAL ARRIVAL (STAR)

Bearings, headings, courses, tracks and radials are magnetic. Elevations and altitudes are in feet, MSL. Altitudes are minimum altitudes unless otherwise indicated.
 Ceilings are in feet above airport elevation. Distances are in nautical miles. Visibilities are in statute miles or feet RVR unless otherwise indicated.

Arrival Name	Number	STAR Computer Code	Superseded Number	Dated	Effective Date
SCOLA (RNAV)	ONE	SCOLA.SCOLA1	NONE		11/03/2022

Graphic Depiction 1



FEDERAL AVIATION ADMINISTRATION
 FLIGHT STANDARDS SERVICE
 STAR (DATA RECORD)

Arrival Name SCOLA (RNAV)	Number ONE	STAR Computer Code SCOLA.SCOLA1		Superseded Number NONE		Dated	Effective Date 11/03/2022		
<u>FIX/NAVAID</u>	<u>LAT/LONG</u>	<u>C</u>	<u>FO/FB</u>	<u>LEG TYPE</u>	<u>TC</u>	<u>DIST (NM)</u>	<u>ALTITUDE</u>	<u>SPEED</u>	<u>REMARKS</u>
En Route Transition									
KENNO	371753.37N / 1171836.81W	Y		IF					KENNO.SCOLA1
RUSME	372939.00N / 1173112.00W	Y	FB	TF	319.57	15.45			
GRAFT	382458.00N / 1181530.00W	Y	FB	TF	327.85	65.43			
SCOLA	384403.36N / 1183907.98W	Y	FB	TF	315.94	26.59	FL240BFL280		
En Route Transition									
MVA VORTAC	383355.08N / 1180158.27W	Y		IF					MVA.SCOLA1
SCOLA	384403.36N / 1183907.98W	Y	FB	TF	289.38	30.82	FL240BFL280		
Common Route									
SCOLA	384403.36N / 1183907.98W	Y		IF			FL240BFL280		SCOLA.SCOLA1
TEXSS	390414.75N / 1190422.57W	Y	FB	TF	315.80	28.20	AT/ABOVE 17000		
HLDMM	390833.92N / 1190949.39W	Y	FB	TF	315.53	06.05	AT/ABOVE 16000	AT/BELOW 280K	
CHIME	392108.29N / 1192544.31W	Y	FB	TF	315.54	17.63	12000B13000	AT 250K	
KLOCK	392937.60N / 1193340.04W	Y	FO	TF	324.12	10.47	AT 10000	AT 210K	
KRNO				VM	346.00				

