

FEDERAL AVIATION ADMINISTRATION  
FLIGHT STANDARDS SERVICE  
STANDARD TERMINAL ARRIVAL (STAR)

Bearings, headings, courses, tracks and radials are magnetic. Elevations and altitudes are in feet, MSL. Altitudes are minimum altitudes unless otherwise indicated.  
Ceilings are in feet above airport elevation. Distances are in nautical miles. Visibilities are in statute miles or feet RVR unless otherwise indicated.

Arrival Name FLATI (RNAV)		Number FIVE	STAR Computer Code FLATI.FLATI5		Superseded Number FOUR		Dated 05/16/2024	Effective Date 12 JUN 25	
TRANSITION ROUTES:									
Transition Name	Transition Computer Codes	From FIX/NAVAID	To FIX/NAVAID	Course	Distance	MEA	MOCA	MAA	Crossing Altitudes / Fixes
FOLSM	FOLSM.FLATI5	FOLSM	FOLSM						BETWEEN FL230 AND FL270
			BBOCO	107.21	11.37	14700	14700	BETWEEN FL210 AND FL250	
			FLATI	107.36	13.41	14200	14200	BETWEEN FL190 AND FL220	
GNOLA	GNOLA.FLATI5	GNOLA	GNOLA						
			HIPEE	124.10	52.72	14700	14700	AT/ABOVE FL250	
			FOLSM	106.95	17.23	14700	14700	BETWEEN FL230 AND FL270	
			BBOCO	107.21	11.37	14700	14700	BETWEEN FL210 AND FL250	
HIPEE	HIPEE.FLATI5	HIPEE	FLATI	107.36	13.41	14200	14200	BETWEEN FL190 AND FL220	
			HIPEE					AT/ABOVE FL250	
			FOLSM	106.95	17.23	14700	14700	BETWEEN FL230 AND FL270	
			BBOCO	107.21	11.37	14700	14700	BETWEEN FL210 AND FL250	
MJANE	MJANE.FLATI5	MJANE	FLATI	107.36	13.41	14200	14200	BETWEEN FL190 AND FL220	
			MJANE						
			MSTSH	099.87	47.28	14700	14700		
			HIPEE	100.51	52.72	14700	14700	AT/ABOVE FL250	
			FOLSM	106.95	17.23	14700	14700	BETWEEN FL230 AND FL270	
MSTSH	MSTSH.FLATI5	MSTSH	BBOCO	107.21	11.37	14700	14700	BETWEEN FL210 AND FL250	
			FLATI	107.36	13.41	14200	14200	BETWEEN FL190 AND FL220	
			MSTSH						
			HIPEE	100.51	52.72	14700	14700	AT/ABOVE FL250	
TOFUU	TOFUU.FLATI5	TOFUU	FOLSM	106.95	17.23	14700	14700	BETWEEN FL230 AND FL270	
			BBOCO	107.21	11.37	14700	14700	BETWEEN FL210 AND FL250	
			FLATI	107.36	13.41	14200	14200	BETWEEN FL190 AND FL220	
			GNOLA	123.78	33.82	14700	14700		
			HIPEE	124.10	52.72	14700	14700	AT/ABOVE FL250	

FEDERAL AVIATION ADMINISTRATION  
FLIGHT STANDARDS SERVICE  
STANDARD TERMINAL ARRIVAL (STAR)

Bearings, headings, courses, tracks and radials are magnetic. Elevations and altitudes are in feet, MSL. Altitudes are minimum altitudes unless otherwise indicated.  
Ceilings are in feet above airport elevation. Distances are in nautical miles. Visibilities are in statute miles or feet RVR unless otherwise indicated.

Arrival Name FLATI (RNAV)			Number FIVE	STAR Computer Code FLATI.FLATI5		Superseded Number FOUR			Dated 05/16/2024	Effective Date 12 JUN 25
Transition Name	Transition Computer Codes	From FIX/NAVAID	To FIX/NAVAID	Course	Distance	MEA	MOCA	MAA	Crossing Altitudes / Fixes	
			FOLSM	106.95	17.23	14700	14700		BETWEEN FL230 AND FL270	
			BBOCO	107.21	11.37	14700	14700		BETWEEN FL210 AND FL250	
			FLATI	107.36	13.41	14200	14200		BETWEEN FL190 AND FL220	

**ARRIVAL ROUTE DESCRIPTION:**

FROM FLATI ON TRACK 107.53/12.16 TO CROSS ELLDO BETWEEN 16000 AND FL190 AND AT 250 KIAS.

LANDING RWY 7, 8: FROM ELLDO ON TRACK 131.65/10.50 TO CROSS MLVVA AT 14000, THEN ON TRACK 131.65. EXPECT RADAR VECTORS TO FINAL APPROACH COURSE.

LANDING RWY 16L/R, 17L/R: FROM ELLDO ON TRACK 099.19/6.00 TO CROSS BSAFE AT OR BELOW 15000, THEN ON TRACK 099.36/7.79 TO CROSS BDUNN BETWEEN 14000 AND 15000 AND AT 210 KIAS, THEN ON TRACK 099.28/6.97 TO CROSS TSHNR AT 13000 AND AT 210 KIAS. EXPECT ILS OR LOC RWY 16L, RWY 16R, RWY 17L, RWY 17R APPROACH.

LANDING RWY 25, 26: FROM ELLDO ON TRACK 136.56/17.26 TO CROSS TOTTT BETWEEN 15000 AND 17000, THEN ON TRACK 136.68/3.00 TO YESSS, THEN ON TRACK 132.82/9.08 TO CROSS SKEWD BETWEEN 13000 AND 15000 AND AT 250 KIAS, THEN ON TRACK 117.50/4.70 TO CROSS LEKEE AT OR ABOVE 12000, THEN ON TRACK 117.55/5.24 TO XCUTV, THEN ON TRACK 082.50/3.30 TO CROSS CAPTJ AT 11000 AND AT 210 KIAS, THEN ON TRACK 082.50. EXPECT RADAR VECTORS TO FINAL APPROACH COURSE.

LANDING RWY 34L/R, 35L: FROM ELLDO ON TRACK 136.56/17.26 TO CROSS TOTTT BETWEEN 15000 AND 17000, THEN ON TRACK 136.68/3.00 TO YESSS, THEN ON TRACK 148.58/8.91 TO CROSS BAACK AT OR ABOVE 13000, THEN ON TRACK 148.27/5.00 TO CROSS BABAA BETWEEN 12000 AND 14000 AND AT 250 KIAS, THEN ON TRACK 173.17/10.95 TO CROSS HIMOM AT 11000 AND AT 210 KIAS, THEN ON TRACK 173.17. EXPECT RADAR VECTORS TO FINAL APPROACH COURSE.

LANDING RWY 35R: FROM ELLDO ON TRACK 136.56/17.26 TO CROSS TOTTT BETWEEN 15000 AND 17000, THEN ON TRACK 136.68/3.00 TO YESSS, THEN ON TRACK 132.82/9.08 TO CROSS SKEWD BETWEEN 13000 AND 15000 AND AT 250 KIAS, THEN ON TRACK 117.50/4.70 TO CROSS LEKEE AT OR ABOVE 12000, THEN ON TRACK 117.55/5.24 TO XCUTV, THEN ON TRACK 117.48/4.00 TO CROSS HDGHG BETWEEN 12000 AND 14000, THEN ON TRACK 117.82/3.13 TO FFFAT, THEN ON TRACK 172.74/6.11 TO CROSS DOGGG AT 11000 AND AT 210 KIAS, THEN ON TRACK 172.74. EXPECT RADAR VECTORS TO FINAL APPROACH COURSE.

**PBN REQUIREMENT NOTES:**

RNAV 1 - DME/DME/IRU OR GPS

**EQUIPMENT REQUIREMENT NOTES:**

RADAR REQUIRED

**PROCEDURAL DATA NOTES:**

NOTE: JET AIRCRAFT ONLY

NOTE: FOLSM, GNOLA, HIPEE, AND MSTSH TRANSITIONS, ATC ASSIGNED ONLY.

NOTE: DENVER CENTER WILL ISSUE "DESCEND VIA" CLEARANCE AND LANDING DIRECTION.

NOTE: EXPECT RUNWAY ASSIGNMENT ON INITIAL CONTACT WITH DENVER TRACON.

NOTE: LANDING NORTH SELECT RWY 35R TRANSITION.

NOTE: LANDING SOUTH SELECT RWY 16L TRANSITION.

NOTE: LANDING EAST SELECT RWY 7 TRANSITION.

NOTE: LANDING WEST SELECT RWY 26 TRANSITION.

**FIXES AND/OR HOLDING PATTERNS:**

CHART HOLDING AT BBOCO: HOLD W, LT, 107.21 INBOUND, 11 NM LEGS.

CHART HOLDING AT ELLDO: HOLD W, RT, 107.53 INBOUND, 10 NM LEGS.

CHART HOLDING AT GNOLA: HOLD NW, LT, 123.78 INBOUND, 12 NM LEGS.

CHART HOLDING AT HIPEE: HOLD W, LT, 100.51 INBOUND, 12 NM LEGS.

FEDERAL AVIATION ADMINISTRATION  
FLIGHT STANDARDS SERVICE  
STANDARD TERMINAL ARRIVAL (STAR)

Bearings, headings, courses, tracks and radials are magnetic. Elevations and altitudes are in feet, MSL. Altitudes are minimum altitudes unless otherwise indicated.  
Ceilings are in feet above airport elevation. Distances are in nautical miles. Visibilities are in statute miles or feet RVR unless otherwise indicated.

Arrival Name	Number	STAR Computer Code	Superseded Number	Dated	Effective Date
<b>FLATI (RNAV)</b>	<b>FIVE</b>	<b>FLATI.FLATI5</b>	<b>FOUR</b>	<b>05/16/2024</b>	<b>12 JUN 25</b>

CHART HOLDING AT MSTSH: HOLD W, RT, 099.87 INBOUND, 12 NM LEGS.  
CHART HOLDING AT BABAA: HOLD NW, LT, 127.33 INBOUND, 10 NM LEGS.  
CHART HOLDING AT YYALE: HOLD W, LT, 092.00 INBOUND, 12 NM LEGS.

**COMMUNICATIONS:**

CHART: DENVER ARTCC.  
CHART: DENVER TOWER.

**AIRPORTS SERVED:**

<u>AIRPORT ID</u>	<u>CITY</u>	<u>STATE</u>
DEN	DENVER	CO

**LOST COMMUNICATIONS PREFERENCES:**

IN THE EVENT OF LOST COMMUNICATIONS PRIOR TO RUNWAY TRANSITION ASSIGNMENT, WHEN DEN IS LANDING SOUTH, PROCEED ON THE ILS RWY 16L; WHEN DEN IS LANDING NORTH, PROCEED ON THE ILS RWY 34R.

**REMARKS:****ADDITIONAL FLIGHT DATA:**

DME/DME ASSESSMENT: SAT (RNP 2.0)  
MAG VAR: DEN 08E/2015  
CHART AT TSHNR TERMINUS: DEN LDG RWY 16L/R, 17L/R  
CHART AT MLVVA TERMINUS: DEN LDG RWY 7, 8  
CHART AT HIMOM TERMINUS: DEN LDG RWY 34L/R, 35L  
CHART AT CAPTJ TERMINUS: DEN LDG RWY 25, 26  
CHART AT DOGGG TERMINUS: DEN LDG RWY 35R

<u>FLIGHT INSPECTED BY:</u>	<i>Digitally signed by</i> <b>ROBERT G HAMILTON</b>	<u>ORGANIZATION:</u>	<u>DATE:</u>	Flight Inspected Signature:
JOEL P MURPHY	Feb 06, 2025	AJF	02/05/2025	_____
<u>DEVELOPED BY:</u>	<i>Digitally signed by</i> <b>ROBERT G HAMILTON</b>	<u>ORGANIZATION:</u>	<u>DATE:</u>	Developed By Signature:
Jenifer Nordstream	Feb 06, 2025	ZDV Airspace&Procedur es	05/01/2024	_____
<u>APPROVED BY:</u>	<i>Digitally signed by</i> <b>ROBERT G HAMILTON</b>	<u>ORGANIZATION:</u>	<u>DATE:</u>	Approved By Signature:
Bev Bordy	Feb 06, 2025	AJV-A430		_____

FEDERAL AVIATION ADMINISTRATION  
FLIGHT STANDARDS SERVICE  
STANDARD TERMINAL ARRIVAL (STAR)

Bearings, headings, courses, tracks and radials are magnetic. Elevations and altitudes are in feet, MSL. Altitudes are minimum altitudes unless otherwise indicated.  
Ceilings are in feet above airport elevation. Distances are in nautical miles. Visibilities are in statute miles or feet RVR unless otherwise indicated.

Arrival Name	Number	STAR Computer Code	Superseded Number	Dated	Effective Date
FLATI (RNAV)	FIVE	FLATI.FLATI5	FOUR	05/16/2024	12 JUN 25

**CHANGES:**

1. ADDED EN ROUTE TRANSITIONS BEGINNING AT FOLSM, GNOLA, AND MSTSH WPs; UPDATED DO NOT FILE NOTE TO READ ATC ASSIGNED ONLY.
2. CHANGED MAX ALTITUDE AT ELLDO FROM FL210 FL190.
3. REMOVED 280 KIAS SPEED RESTRICTION FROM FOLSM WP AND BBOCO WP.
4. CHANGED LOST COMMUNICATIONS FROM ILS RWY 16R TO ILS RWY 16L.
5. ADDED HOLDING AT BABAA WP: HOLD NW, LT, 127.33 INBOUND, 10 NM LEGS.
6. REMOVED AIRPORT NAME FROM AIRPORTS SERVED AND ADDED AIRPORT ID; REMOVED K IDENT FROM 17.1 FORM.
7. REMOVED DEN APP CON FROM COMMUNICATIONS.
8. ADDED DEN ARTCC TO COMMUNICATIONS.

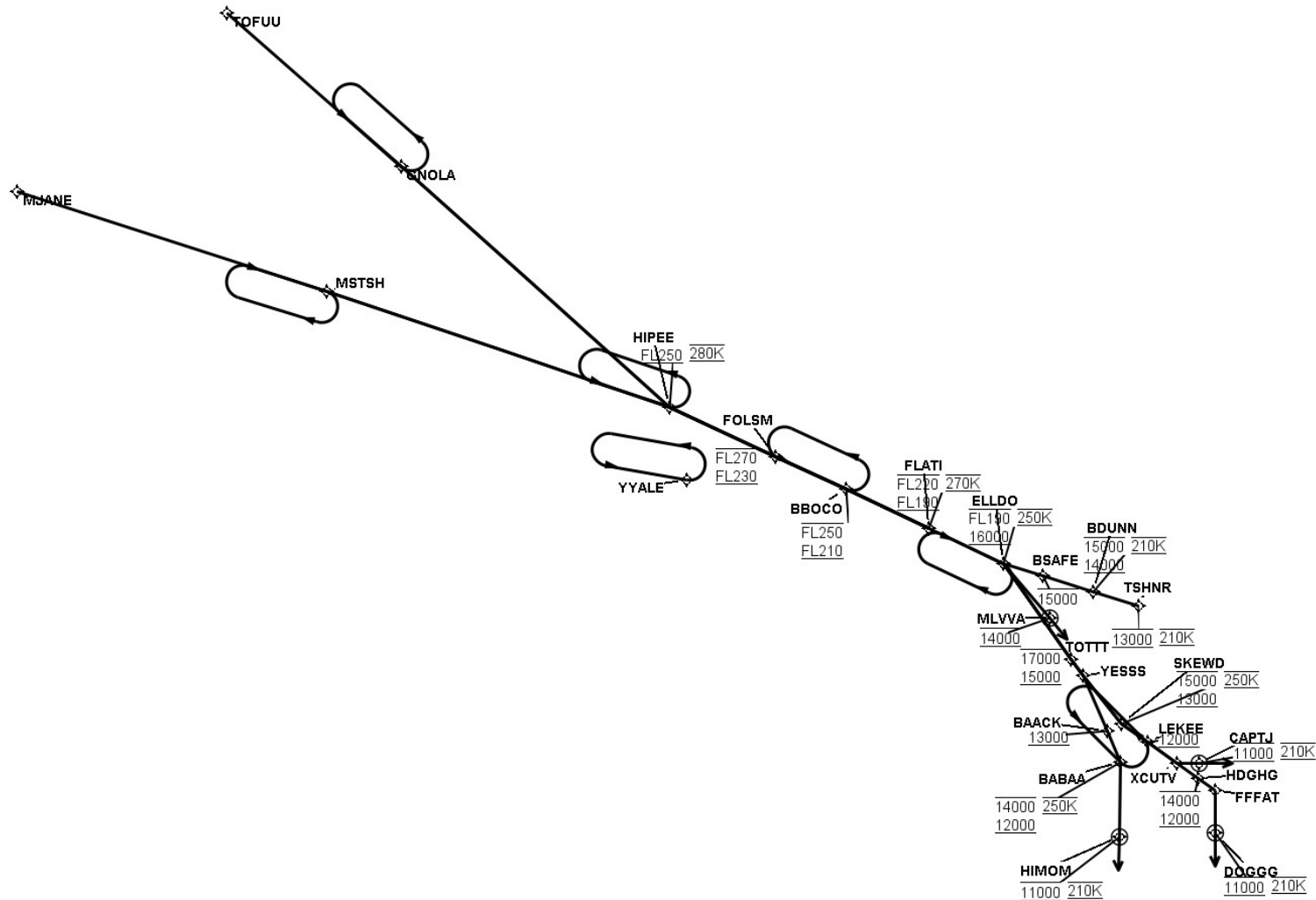
**REASONS:**

1. ATC REQUEST TO MITIGATE REROUTING AND RE-CLEARING AIRCRAFT DURING BUSY OR INCLEMENT WEATHER.
2. ATC REQUEST TO CONTAIN AIRCRAFT WITHIN ANTICIPATED DESCENT PROFILE.
3. INDUSTRY REQUEST TO REDUCE CHART CLUTTER AND CONFUSION.
4. ATC REQUEST TO MATCH NOTE CHANGE.
5. ATC REQUEST.
6. IAW 8260.19J DOCUMENTATION STANDARDS.
7. APPROACH CONTROL AUTOMATICALLY CHARTED AND DOES NOT NEED TO BE DOCUMENTED IN THIS SECTION IAW 8260.19J PARA 4-5-12(F).
8. ATC REQUEST.

FEDERAL AVIATION ADMINISTRATION  
FLIGHT STANDARDS SERVICE  
STANDARD TERMINAL ARRIVAL (STAR)

Bearings, headings, courses, tracks and radials are magnetic. Elevations and altitudes are in feet, MSL. Altitudes are minimum altitudes unless otherwise indicated.  
Ceilings are in feet above airport elevation. Distances are in nautical miles. Visibilities are in statute miles or feet RVR unless otherwise indicated.

Arrival Name	Number	STAR Computer Code	Superseded Number	Dated	Effective Date
FLATI (RNAV)	FIVE	FLATI.FLATI5	FOUR	05/16/2024	12 JUN 25
Graphic Depiction 1					



FEDERAL AVIATION ADMINISTRATION  
FLIGHT STANDARDS SERVICE  
STAR (DATA RECORD)

Arrival Name FLATI (RNAV)	Number FIVE	STAR Computer Code FLATI.FLATI5		Superseded Number FOUR		Dated 05/16/2024	Effective Date 12 JUN 25		
FIX/NAVAID	LAT/LONG	C	FO/FB	LEG TYPE	TC	DIST (NM)	ALTITUDE	SPEED	REMARKS
En Route Transition									
FOLSM	404325.52N / 1055435.30W	Y		IF			FL230BFL270		FOLSM.FLATI5
BBOCO	403833.95N / 1054104.48W	Y	FB	TF	115.21	11.37	FL210BFL250		
FLATI	403248.03N / 1052510.72W	Y	FB	TF	115.36	13.41	FL190BFL220	AT 270K	
En Route Transition									
GNOLA	412617.12N / 1070640.35W	Y		IF					GNOLA.FLATI5
HIPEE	405043.69N / 1061508.14W	Y	FB	TF	132.10	52.72	AT/ABOVE FL250	AT 280K	
FOLSM	404325.52N / 1055435.30W	Y	FB	TF	114.95	17.23	FL230BFL270		
BBOCO	403833.95N / 1054104.48W	Y	FB	TF	115.21	11.37	FL210BFL250		
FLATI	403248.03N / 1052510.72W	Y	FB	TF	115.36	13.41	FL190BFL220	AT 270K	
En Route Transition									
HIPEE	405043.69N / 1061508.14W	Y		IF			AT/ABOVE FL250	AT 280K	HIPEE.FLATI5
FOLSM	404325.52N / 1055435.30W	Y	FB	TF	114.95	17.23	FL230BFL270		
BBOCO	403833.95N / 1054104.48W	Y	FB	TF	115.21	11.37	FL210BFL250		
FLATI	403248.03N / 1052510.72W	Y	FB	TF	115.36	13.41	FL190BFL220	AT 270K	
En Route Transition									
MJANE	412234.11N / 1082033.48W	Y		IF					MJANE.FLATI5
MSTSH	410747.60N / 1072100.54W	Y	FB	TF	107.87	47.28			
HIPEE	405043.69N / 1061508.14W	Y	FB	TF	108.51	52.72	AT/ABOVE FL250	AT 280K	
FOLSM	404325.52N / 1055435.30W	Y	FB	TF	114.95	17.23	FL230BFL270		
BBOCO	403833.95N / 1054104.48W	Y	FB	TF	115.21	11.37	FL210BFL250		
FLATI	403248.03N / 1052510.72W	Y	FB	TF	115.36	13.41	FL190BFL220	AT 270K	
En Route Transition									
MSTSH	410747.60N / 1072100.54W	Y		IF					MSTSH.FLATI5
HIPEE	405043.69N / 1061508.14W	Y	FB	TF	108.51	52.72	AT/ABOVE FL250	AT 280K	
FOLSM	404325.52N / 1055435.30W	Y	FB	TF	114.95	17.23	FL230BFL270		

FEDERAL AVIATION ADMINISTRATION  
FLIGHT STANDARDS SERVICE  
STAR (DATA RECORD)

Arrival Name FLATI (RNAV)		Number FIVE		STAR Computer Code FLATI.FLATI5		Superseded Number FOUR		Dated 05/16/2024	Effective Date 12 JUN 25
FIX/NAVAID	LAT/LONG	C	FO/FB	LEG TYPE	TC	DIST (NM)	ALTITUDE	SPEED	REMARKS
BBOCO	403833.95N / 1054104.48W	Y	FB	TF	115.21	11.37	FL210BFL250		
FLATI	403248.03N / 1052510.72W	Y	FB	TF	115.36	13.41	FL190BFL220	AT 270K	
En Route Transition									
TOFUU	414854.82N / 1074012.49W	Y		IF					TOFUU.FLATI5
GNOLA	412617.12N / 1070640.35W	Y	FB	TF	131.78	33.82			
HIPEE	405043.69N / 1061508.14W	Y	FB	TF	132.10	52.72	AT/ABOVE FL250	AT 280K	
FOLSM	404325.52N / 1055435.30W	Y	FB	TF	114.95	17.23	FL230BFL270		
BBOCO	403833.95N / 1054104.48W	Y	FB	TF	115.21	11.37	FL210BFL250		
FLATI	403248.03N / 1052510.72W	Y	FB	TF	115.36	13.41	FL190BFL220	AT 270K	
Common Route									
FLATI	403248.03N / 1052510.72W	Y		IF			FL190BFL220	AT 270K	FLATI.FLATI5
ELLDO	402732.46N / 1051048.22W	Y	FB	TF	115.53	12.16	16000BFL190	AT 250K	
Runway Transition									
ELLDO	402732.46N / 1051048.22W	Y		IF			16000BFL190	AT 250K	
MLVVA	401931.66N / 1050154.90W	Y	FO	TF	139.65	10.50	AT 14000		
KDEN:RWY 7,RWY 8				FM	139.65				
Runway Transition									
ELLDO	402732.46N / 1051048.22W	Y		IF			16000BFL190	AT 250K	
BSAFE	402545.73N / 1050317.87W	Y	FB	TF	107.19	06.00	AT/BELOW 15000		
BDUNN	402325.76N / 1045334.10W	Y	FB	TF	107.36	07.79	14000B15000	AT 210K	
TSHNR	402121.13N / 1044451.74W	Y	FB	TF	107.28	06.97	AT 13000	AT 210K	
KDEN:RWY 16L,RWY 16R,RWY 17L,RWY 17R									
Runway Transition									
ELLDO	402732.46N / 1051048.22W	Y		IF			16000BFL190	AT 250K	QUALITY

FEDERAL AVIATION ADMINISTRATION  
FLIGHT STANDARDS SERVICE  
STAR (DATA RECORD)

Arrival Name FLATI (RNAV)		Number FIVE		STAR Computer Code FLATI.FLATI5		Superseded Number FOUR		Dated 05/16/2024	Effective Date 12 JUN 25
FIX/NAVAID	LAT/LONG	C	FO/FB	LEG TYPE	TC	DIST (NM)	ALTITUDE	SPEED	REMARKS
TOTTT	401327.39N / 1045744.24W	Y	FB	TF	144.56	17.26	15000B17000		
YESSS	401100.39N / 1045528.47W	Y	FB	TF	144.68	03.00			
SKEWD	400357.73N / 1044800.42W	Y	FB	TF	140.82	09.08	13000B15000	AT 250K	
LEKEE	400113.76N / 1044301.57W	Y	FB	TF	125.50	04.70	AT/ABOVE 12000		
XCUTV	395810.74N / 1043728.95W	Y	FB	TF	125.55	05.24			
CAPTJ	395808.94N / 1043311.12W	Y	FO	TF	090.50	03.30	AT 11000	AT 210K	
KDEN:RWY 25,RWY 26				FM	090.50				
Runway Transition									
ELLDO	402732.46N / 1051048.22W	Y		IF			16000BFL190	AT 250K	
TOTTT	401327.39N / 1045744.24W	Y	FB	TF	144.56	17.26	15000B17000		
YESSS	401100.39N / 1045528.47W	Y	FB	TF	144.68	03.00			
BAACK	400249.43N / 1045051.84W	Y	FB	TF	156.58	08.91	AT/ABOVE 13000		
BABAA	395814.55N / 1044814.83W	Y	FB	TF	156.27	05.00	12000B14000	AT 250K	
HIMOM	394717.19N / 1044832.22W	Y	FO	TF	181.17	10.95	AT 11000	AT 210K	
KDEN:RWY 34L,RWY 34R,RWY 35L				FM	181.17				
Runway Transition									
ELLDO	402732.46N / 1051048.22W	Y		IF			16000BFL190	AT 250K	
TOTTT	401327.39N / 1045744.24W	Y	FB	TF	144.56	17.26	15000B17000		
YESSS	401100.39N / 1045528.47W	Y	FB	TF	144.68	03.00			
SKEWD	400357.73N / 1044800.42W	Y	FB	TF	140.82	09.08	13000B15000	AT 250K	
LEKEE	400113.76N / 1044301.57W	Y	FB	TF	125.50	04.70	AT/ABOVE 12000		
XCUTV	395810.74N / 1043728.95W	Y	FB	TF	125.55	05.24			
HDGHG	395551.26N / 1043314.89W	Y	FB	TF	125.48	04.00	12000B14000		
FFFAT	395401.30N / 1042957.17W	Y	FB	TF	125.82	03.13			
DOGGG	394754.32N / 1043003.31W	Y	FO	TF	180.74	06.11	AT 11000	AT 210K	
KDEN:RWY 35R				FM	180.74				