

FEDERAL AVIATION ADMINISTRATION
FLIGHT STANDARDS SERVICE
STANDARD TERMINAL ARRIVAL (STAR)

Bearings, headings, courses, tracks and radials are magnetic. Elevations and altitudes are in feet, MSL. Altitudes are minimum altitudes unless otherwise indicated.
Ceilings are in feet above airport elevation. Distances are in nautical miles. Visibilities are in statute miles or feet RVR unless otherwise indicated.

Arrival Name CHSLY (RNAV)	Number SIX	STAR Computer Code CHSLY.CHSLY6	Superseded Number FIVE	Dated 12/02/2021	Effective Date 16 MAY 2024				
TRANSITION ROUTES:									
Transition Name	Transition Computer Codes	From FIX/NAVAID	To FIX/NAVAID	Course	Distance	MEA	MOCA	MAA	Crossing Altitudes / Fixes
AIROW	AIROW.CHSLY6	AIROW	AIROW						
			BEMOH	222.85	16.92	FL180	4000		
			WRLLD	221.17	15.56	FL180	4000		
			BLUEJ	221.02	22.05	17000	4000		AT/ABOVE FL270
			BURRZ	220.86	11.63	15000	3800		BETWEEN FL240 AND FL270
			SKLES	220.76	05.50	13000	3500		AT/ABOVE FL220
			DENTT	220.73	19.68	13000	3500		AT/ABOVE 16000
			BOOTS	220.61	08.10	13000	3000		BETWEEN 13000 AND FL230
			CHSLY	220.51	03.00	13000	2900		BETWEEN 13000 AND FL220
COUPN	COUPN.CHSLY6	COUPN	COUPN						
			ARGAL	247.12	64.61	16000	3100		
			PELTS	267.35	62.66	16000	3100		
			FEDOX	271.38	08.39	16000	3100		
			SHANZ	271.54	04.34	15000	3100		
			SDAIL	271.52	05.85	13000	3100		BETWEEN 17000 AND FL230
			WLLSH	264.66	19.40	13000	3100		AT/ABOVE 16000
			CHSLY	259.15	11.10	13000	2900		BETWEEN 13000 AND FL220
NUUMN	NUUMN.CHSLY6	NUUMN	NUUMN						
			SDAIL	246.00	23.86	13000	3100		BETWEEN 17000 AND FL230
			WLLSH	264.66	19.40	13000	3100		AT/ABOVE 16000
			CHSLY	259.15	11.10	13000	2900		BETWEEN 13000 AND FL220
SDAIL	SDAIL.CHSLY6	SDAIL	SDAIL						BETWEEN 17000 AND FL230
			WLLSH	264.66	19.40	13000	3100		AT/ABOVE 16000
			CHSLY	259.15	11.10	13000	2900		BETWEEN 13000 AND FL220



FEDERAL AVIATION ADMINISTRATION
FLIGHT STANDARDS SERVICE
STANDARD TERMINAL ARRIVAL (STAR)

Bearings, headings, courses, tracks and radials are magnetic. Elevations and altitudes are in feet, MSL. Altitudes are minimum altitudes unless otherwise indicated.
Ceilings are in feet above airport elevation. Distances are in nautical miles. Visibilities are in statute miles or feet RVR unless otherwise indicated.

Arrival Name	Number	STAR Computer Code	Superseded Number	Dated	Effective Date
CHSLY (RNAV)	SIX	CHSLY.CHSLY6	FIVE	12/02/2021	16 MAY 2024

ARRIVAL ROUTE DESCRIPTION:

LANDING RWY 18L/C/R: FROM CHSLY ON TRACK 225.20/6.44 TO CROSS KRISS BETWEEN 11000 AND 12000, THEN ON TRACK 204.47/11.19 TO CROSS NODEW BETWEEN 8000 AND 9000 AND AT 230 KIAS, THEN ON TRACK 276.25/10.01 TO CROSS HEELZ AT 6000 AND AT 210 KIAS, THEN ON TRACK 270.00. EXPECT RADAR VECTORS TO FINAL APPROACH COURSE.

LANDING RWY 36R/C/L: FROM CHSLY ON TRACK 219.86/10.15 TO CROSS SLPOH BETWEEN 11000 AND FL210, THEN ON TRACK 218.80/10.35 TO CROSS JAMGO BETWEEN 10000 AND 16000, THEN ON TRACK 218.39/8.35 TO CROSS WHIZE BETWEEN 10000 AND 12000 AND AT 250 KIAS, THEN ON TRACK 218.34/9.94 TO CROSS CAATT AT 10000 AND AT 210 KIAS, THEN ON TRACK 183.08/12.00 TO EPAYE, THEN ON TRACK 183.08. EXPECT RADAR VECTORS TO FINAL APPROACH COURSE.

PBN REQUIREMENT NOTES:

RNAV 1 - DME/DME/IRU OR GPS

EQUIPMENT REQUIREMENT NOTES:

RADAR REQUIRED

PROCEDURAL DATA NOTES:

NOTE: JET AIRCRAFT ONLY

NOTE: LANDING SOUTH USE RWY 18L TRANSITION, LANDING NORTH USE RWY 36R TRANSITION. EXPECT RUNWAY ASSIGNMENT FROM CLT APPROACH.

NOTE: JET AIRCRAFT DESCEND VIA MACH NUMBER UNTIL 280 KIAS, IF UNABLE, ADVISE ATC.

NOTE: DO NOT FILE NUUMN TRANSITION - TO BE ASSIGNED BY ATC.

FIXES AND/OR HOLDING PATTERNS:

CHART HOLDING AT AIROW: HOLD NE, RT, 222.85 INBOUND, 10 NM LEGS.

CHART HOLDING AT BLUEJ: HOLD NE, RT, 221.02 INBOUND, 10 NM LEGS.

CHART HOLDING AT CHSLY: HOLD NE, LT, 220.51 INBOUND, 10 NM LEGS.

CHART HOLDING AT FEDOX: HOLD E, RT, 271.38 INBOUND, 10 NM LEGS.

CHART HOLDING AT PELTS: HOLD E, RT, 267.35 INBOUND, 10 NM LEGS.

CHART HOLDING AT WRLLD: HOLD NE, RT, 221.17 INBOUND, 10 NM LEGS.

COMMUNICATIONS:

CHART CLT APP CON.

AIRPORTS SERVED:

AIRPORT ID
KCLT

CITY
CHARLOTTE

STATE
NC

LOST COMMUNICATIONS PREFERENCES:**REMARKS:**

THE ENVIRONMENTAL REVIEW UNDER ORDER 1050.1 (LATEST EDITION) AND THE NOISE SCREENING HAVE BEEN ACCOMPLISHED.



FEDERAL AVIATION ADMINISTRATION
FLIGHT STANDARDS SERVICE
STANDARD TERMINAL ARRIVAL (STAR)

Bearings, headings, courses, tracks and radials are magnetic. Elevations and altitudes are in feet, MSL. Altitudes are minimum altitudes unless otherwise indicated.
Ceilings are in feet above airport elevation. Distances are in nautical miles. Visibilities are in statute miles or feet RVR unless otherwise indicated.

Arrival Name	Number	STAR Computer Code	Superseded Number	Dated	Effective Date
CHSLY (RNAV)	SIX	CHSLY.CHSLY6	FIVE	12/02/2021	16 MAY 2024

ADDITIONAL FLIGHT DATA:

DME/DME ASSESSMENT: SAT (RNP 2.0)
MAG VAR: KCLT 07W/2000
CHART AT HEELZ TERMINUS: KCLT LDG RWY 18L/C/R
CHART AT EPAYE TERMINUS: KCLT LDG RWY 36R/C/L
CHART: KRUQ.
CHART: USE CAUTION: PARACHUTE JUMPING 3NM SOUTH SLPOH, 5NM RADIUS KRUQ, AOB 14,500 MSL (SR-SS).

FLIGHT INSPECTED BY:

JEFFREY ECKMAN

ORGANIZATION:

FPO

DATE:

02/14/2024

Flight Inspected Signature:

*Digitally signed by***ALLAN WILL**

Feb 15, 2024

DEVELOPED BY:

JOEY TINSLEY

ESC PBN CO-
LEAD

08/31/2023

Developed By Signature:

*Digitally signed by***ALLAN WILL**

Feb 15, 2024

APPROVED BY:

MIKE GARRITY

AJV-A423

Approved By Signature:

*Digitally signed by***ALLAN WILL**

Feb 15, 2024

CHANGES:

1. REMOVED ALL REFERENCES TO RWYS 5/23, INCLUDING TRANSITIONS.
2. AMENDED RESTRICTION AT SLPOH FROM BETWEEN 10000 AND 21000 TO BETWEEN 11000 AND 21000.
3. AMENDED RESTRICTION AT WHIZE FROM BETWEEN 9000 AND 12000 TO BETWEEN 10000 AND 12000 AT 250 KIAS.
4. AMENDED RESTRICTION AT KRISS FROM AT OR ABOVE 11000 TO BETWEEN 11000 AND 12000.
5. AMENDED RESTRICTION AT CAATT FROM AT 9000 AT 210 KIAS TO AT 10000 AT 210 KIAS.
6. REMOVED AT 6000 AT 210 KIAS RESTRICTION AT EPAYE.
7. REPLACED LYH VOR/DME WITH AIROW WP AND RENAMED TRANSITION.
8. ADDED HOLDING PATTERN TO AIROW.
9. REMOVED SLPOH FROM RWY 18L/C/R TRANSITION.
10. REMOVED KRISS FROM RWY 36R/C/L TRANSITION.
11. UPDATED MOCA VALUES.
12. CHANGED TURBOJET TO JET IN NOTES.
13. REPHRASED NUUMN ATC ASSIGNED ONLY NOTE.
14. REMOVED NOTES AT HEELZ/EPAYE.
15. REPHRASED MACH NUMBER NOTE.
16. REMOVED NOTE CLT WILL ASSIGN LANDING RUNWAY.
17. REMOVED RWY 23 NOTE REF LOCALIZER.
18. REPHRASED LANDING DIRECTION NOTE.
19. ADDED TERMINUS DATA TO ADDITIONAL FLIGHT DATA

QUALITY
14
CHECKED

FEDERAL AVIATION ADMINISTRATION
FLIGHT STANDARDS SERVICE
STANDARD TERMINAL ARRIVAL (STAR)

Bearings, headings, courses, tracks and radials are magnetic. Elevations and altitudes are in feet, MSL. Altitudes are minimum altitudes unless otherwise indicated.
Ceilings are in feet above airport elevation. Distances are in nautical miles. Visibilities are in statute miles or feet RVR unless otherwise indicated.

Arrival Name	Number	STAR Computer Code	Superseded Number	Dated	Effective Date
CHSLY (RNAV)	SIX	CHSLY.CHSLY6	FIVE	12/02/2021	16 MAY 2024

REASONS:

- 1-10, 14, 16, 17, 18. ATC REQUEST.
- 11. IAW 8260.19J 2-2-7(D)3
- 12, 13, 15. UPDATED FORMAT AND REPHRASED
- 19. IAW 8260.19J 4-5-2(H)2.



Bearings, headings, courses, tracks and radials are magnetic. Elevations and altitudes are in feet, MSL. Altitudes are minimum altitudes unless otherwise indicated. Ceilings are in feet above airport elevation. Distances are in nautical miles. Visibilities are in statute miles or feet RVR unless otherwise indicated.

Graphic Depiction 1

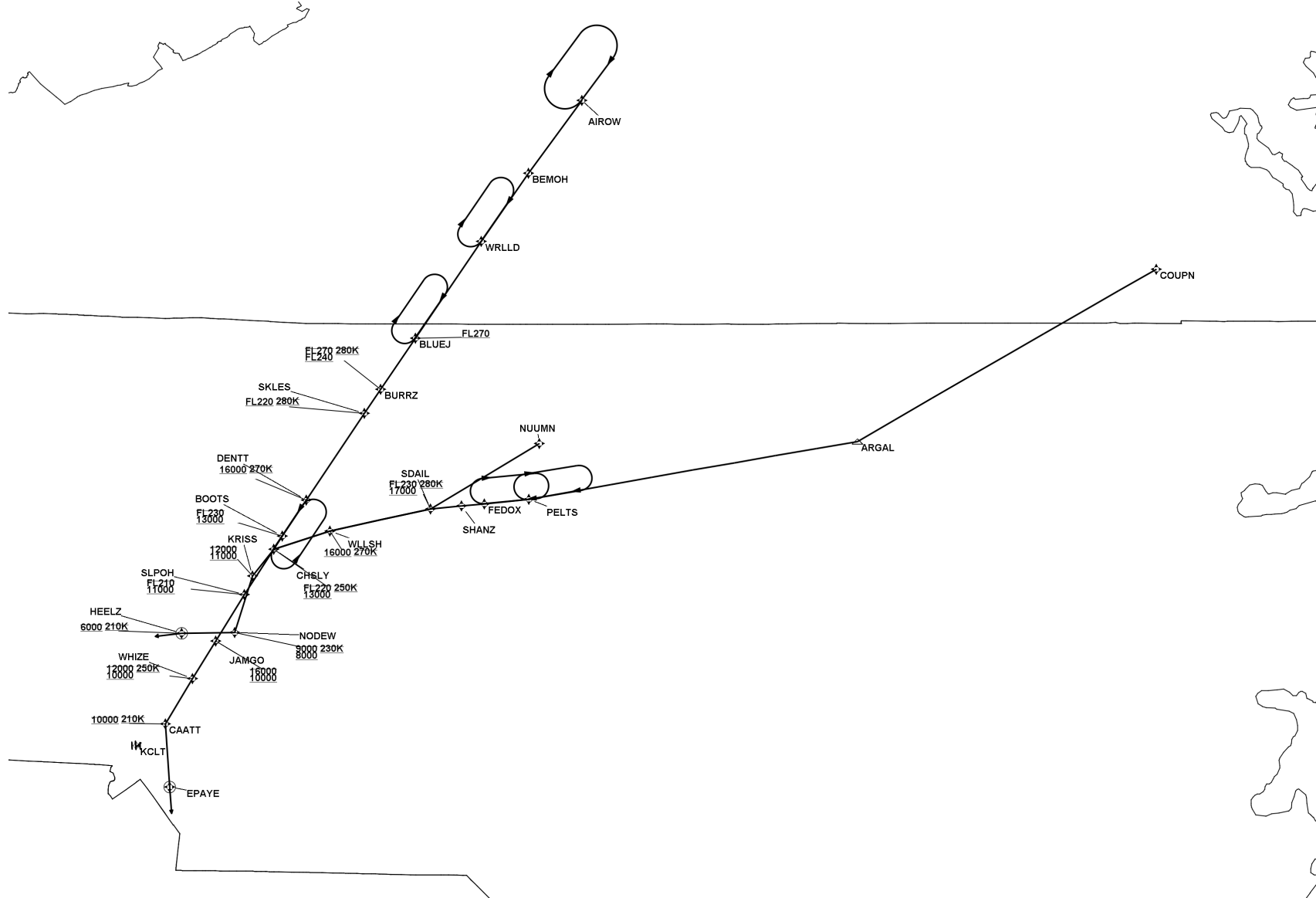


FEDERAL AVIATION ADMINISTRATION
FLIGHT STANDARDS SERVICE
STANDARD TERMINAL ARRIVAL (STAR)

Bearings, headings, courses, tracks and radials are magnetic. Elevations and altitudes are in feet, MSL. Altitudes are minimum altitudes unless otherwise indicated.
Ceilings are in feet above airport elevation. Distances are in nautical miles. Visibilities are in statute miles or feet RVR unless otherwise indicated.

Arrival Name	Number	STAR Computer Code	Superseded Number	Dated	Effective Date
CHSLY (RNAV)	SIX	CHSLY.CHSLY6	FIVE	12/02/2021	16 MAY 2024

Graphic Depiction 2

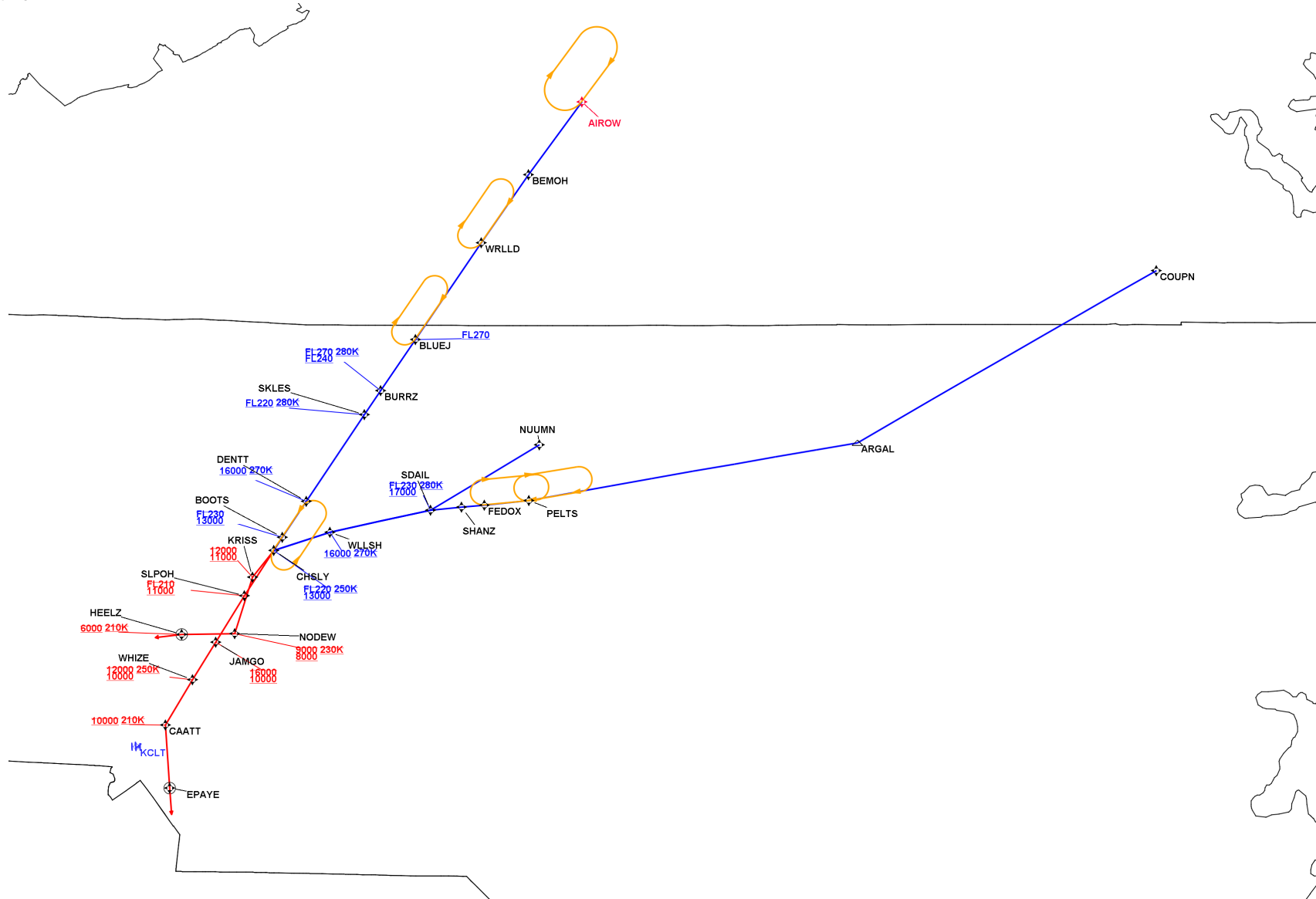


FEDERAL AVIATION ADMINISTRATION
FLIGHT STANDARDS SERVICE
STANDARD TERMINAL ARRIVAL (STAR)

Bearings, headings, courses, tracks and radials are magnetic. Elevations and altitudes are in feet, MSL. Altitudes are minimum altitudes unless otherwise indicated.
Ceilings are in feet above airport elevation. Distances are in nautical miles. Visibilities are in statute miles or feet RVR unless otherwise indicated.

Arrival Name	Number	STAR Computer Code	Superseded Number	Dated	Effective Date
CHSLY (RNAV)	SIX	CHSLY.CHSLY6	FIVE	12/02/2021	16 MAY 2024

Graphic Depiction 3



FEDERAL AVIATION ADMINISTRATION
FLIGHT STANDARDS SERVICE
STAR (DATA RECORD)

Arrival Name CHSLY (RNAV)	Number SIX	STAR Computer Code CHSLY.CHSLY6		Superseded Number FIVE		Dated 12/02/2021		Effective Date 16 MAY 2024	
<u>FIX/NAVAID</u>	<u>LAT/LONG</u>	<u>C</u>	<u>FO/FB</u>	<u>LEG TYPE</u>	<u>TC</u>	<u>DIST (NM)</u>	<u>ALTITUDE</u>	<u>SPEED</u>	<u>REMARKS</u>
En Route Transition									
AIROW	371448.69N / 0791347.48W	Y		IF					AIROW.CHSLY6
BEMOH	370104.39N / 0792609.73W	Y	FB	TF	215.85	16.92			
WRLLD	364810.44N / 0793702.65W	Y	FB	TF	214.17	15.56			
BLUEJ	362951.50N / 0795220.48W	Y	FB	TF	214.02	22.05	AT/ABOVE FL270		
BURRZ	362011.05N / 0800021.64W	Y	FB	TF	213.86	11.63	FL240BFL270	AT 280K	
SKLES	361536.24N / 0800408.37W	Y	FB	TF	213.76	05.50	AT/ABOVE FL220	AT 280K	
DENTT	355911.99N / 0801736.24W	Y	FB	TF	213.73	19.68	AT/ABOVE 16000	AT 270K	
BOOTS	355226.50N / 0802307.22W	Y	FB	TF	213.61	08.10	13000BFL230		
CHSLY	354956.17N / 0802509.43W	Y	FB	TF	213.51	03.00	13000BFL220	AT 250K	
En Route Transition									
COUPN	364250.83N / 0770044.04W	Y		IF					COUPN.CHSLY6
ARGAL	361016.63N / 0780955.31W	Y	FB	TF	240.12	64.61			
PELTS	355921.35N / 0792602.35W	Y	FB	TF	260.35	62.66			
FEDOX	355831.50N / 0793619.66W	Y	FB	TF	264.38	08.39			
SHANZ	355806.56N / 0794139.23W	Y	FB	TF	264.54	04.34			
SDAIL	355732.76N / 0794849.98W	Y	FB	TF	264.52	05.85	17000BFL230	AT 280K	
WLLSH	355321.38N / 0801209.65W	Y	FB	TF	257.66	19.40	AT/ABOVE 16000	AT 270K	
CHSLY	354956.17N / 0802509.43W	Y	FB	TF	252.15	11.10	13000BFL220	AT 250K	
En Route Transition									
NUUMN	360953.78N / 0792338.70W	Y		IF					NUUMN.CHSLY6
SDAIL	355732.76N / 0794849.98W	Y	FB	TF	239.00	23.86	17000BFL230	AT 280K	
WLLSH	355321.38N / 0801209.65W	Y	FB	TF	257.66	19.40	AT/ABOVE 16000	AT 270K	
CHSLY	354956.17N / 0802509.43W	Y	FB	TF	252.15	11.10	13000BFL220	AT 250K	

FEDERAL AVIATION ADMINISTRATION
FLIGHT STANDARDS SERVICE
STAR (DATA RECORD)

Arrival Name CHSLY (RNAV)	Number SIX	STAR Computer Code CHSLY.CHSLY6		Superseded Number FIVE		Dated 12/02/2021		Effective Date 16 MAY 2024	
<u>FIX/NAVAID</u>	<u>LAT/LONG</u>	<u>C</u>	<u>FO/FB</u>	<u>LEG TYPE</u>	<u>TC</u>	<u>DIST (NM)</u>	<u>ALTITUDE</u>	<u>SPEED</u>	<u>REMARKS</u>
En Route Transition									
SDAIL	355732.76N / 0794849.98W	Y		IF			17000BFL230	AT 280K	SDAIL.CHSLY6
WLLSH	355321.38N / 0801209.65W	Y	FB	TF	257.66	19.40	AT/ABOVE 16000	AT 270K	
CHSLY	354956.17N / 0802509.43W	Y	FB	TF	252.15	11.10	13000BFL220	AT 250K	
Runway Transition									
CHSLY	354956.17N / 0802509.43W	Y		IF			13000BFL220	AT 250K	
KRISS	354452.11N / 0803002.82W	Y	FB	TF	218.20	06.44	11000B12000		
NODEW	353410.88N / 0803409.81W	Y	FB	TF	197.47	11.19	8000B9000	AT 230K	
HEELZ	353402.34N / 0804626.00W	Y	FO	TF	269.25	10.01	AT 6000	AT 210K	
KCLT:RWY 18L, RWY 18C, RWY 18R				FM	263.00				
Runway Transition									
CHSLY	354956.17N / 0802509.43W	Y		IF			13000BFL220	AT 250K	
SLPOH	354123.61N / 0803155.16W	Y	FB	TF	212.86	10.15	11000BFL210		
JAMGO	353234.84N / 0803836.23W	Y	FB	TF	211.80	10.35	10000B16000		
WHIZE	352526.54N / 0804355.47W	Y	FB	TF	211.39	08.35	10000B12000	AT 250K	
CAATT	351656.00N / 0805014.48W	Y	FB	TF	211.34	09.94	AT 10000	AT 210K	
EPAYE	350456.54N / 0804914.43W	Y	FO	TF	176.08	12.00			
KCLT:RWY 36R, RWY 36C, RWY 36L				FM	176.08				

