

FEDERAL AVIATION ADMINISTRATION  
 FLIGHT STANDARDS SERVICE  
 STANDARD TERMINAL ARRIVAL (STAR)

Bearings, headings, courses, tracks and radials are magnetic. Elevations and altitudes are in feet, MSL. Altitudes are minimum altitudes unless otherwise indicated. Ceilings are in feet above airport elevation. Distances are in nautical miles. Visibilities are in statute miles or feet RVR unless otherwise indicated.

Arrival Name <b>TYNEE (RNAV)</b>	Number <b>FOUR</b>	STAR Computer Code <b>TYNEE.TYNEE4</b>	Superseded Number <b>THREE</b>	Dated <b>10/31/2024</b>	Effective Date <b>12 JUN 2025</b>
-------------------------------------	-----------------------	---	-----------------------------------	----------------------------	--------------------------------------

TRANSITION ROUTES:

Transition Name	Transition Computer Codes	From FIX/NAVAID	To FIX/NAVAID	Course	Distance	MEA	MOCA	MAA	Crossing Altitudes / Fixes
FRZBE	FRZBE.TYNEE4	FRZBE	FRZBE						
			JOSFF	149.14	18.00	15000	1400		
			JEVES	148.54	09.19	13000	1400		
			TYNEE	148.59	07.63	11000	1400		
KOLBR	KOLBR.TYNEE4	KOLBR	KOLBR						
			TEGGS	098.55	36.44	FL180	1500		
			SMOGS	099.75	71.86	FL180	1500		
			BAGGS	105.78	28.35	15000	1500		
OGGER	OGGER.TYNEE4	OGGER	OGGER						
			FRZBE	162.16	51.87	FL180	1400		
			JOSFF	149.14	18.00	15000	1400		
			JEVES	148.54	09.19	13000	1400		
PLYER	PLYER.TYNEE4	PLYER	TYNEE	148.59	07.63	11000	1400		
			EGAME	166.15	24.10	FL180	1400		
			OGGER	166.07	30.54	FL180	1400		
			FRZBE	162.16	51.87	FL180	1400		
SMOGS	SMOGS.TYNEE4	SMOGS	JOSFF	149.14	18.00	15000	1400		
			JEVES	148.54	09.19	13000	1400		
			TYNEE	148.59	07.63	11000	1400		
			BAGGS	105.78	28.35	15000	1500		
			TYNEE	127.90	36.02	11000	1400		

**ARRIVAL ROUTE DESCRIPTION:**

LANDING RSW RWY 6: FROM TYNEE ON TRACK 148.62/20.73 TO SAANN, THEN ON TRACK 148.62. EXPECT RADAR VECTORS TO FINAL APPROACH COURSE.

LANDING RSW RWY 24: FROM TYNEE ON TRACK 148.62/26.18 TO PASTR, THEN ON TRACK 128.84/5.35 TO LLMER, THEN ON TRACK 085.76/6.73 TO SPNKE, THEN ON TRACK 058.11/6.44 TO CROSS COOPR AT OR ABOVE 4000, THEN ON TRACK 058.11. EXPECT RADAR VECTORS TO FINAL APPROACH COURSE.

LANDING FMY: FROM TYNEE ON TRACK 148.65/9.24 TO BANYN, THEN ON TRACK 148.65. EXPECT RADAR VECTORS TO FINAL APPROACH COURSE.



FEDERAL AVIATION ADMINISTRATION  
 FLIGHT STANDARDS SERVICE  
 STANDARD TERMINAL ARRIVAL (STAR)

Bearings, headings, courses, tracks and radials are magnetic. Elevations and altitudes are in feet, MSL. Altitudes are minimum altitudes unless otherwise indicated. Ceilings are in feet above airport elevation. Distances are in nautical miles. Visibilities are in statute miles or feet RVR unless otherwise indicated.

Arrival Name	Number	STAR Computer Code	Superseded Number	Dated	Effective Date
TYNEE (RNAV)	FOUR	TYNEE.TYNEE4	THREE	10/31/2024	12 JUN 2025

**PBN REQUIREMENT NOTES:**

RNAV 1 - DME/DME/IRU OR GPS  
 FROM KOLBR: RNAV 1-GPS.

**EQUIPMENT REQUIREMENT NOTES:**

RADAR REQUIRED

**PROCEDURAL DATA NOTES:**

NOTE: JET AND TURBOPROP AIRCRAFT ONLY  
 NOTE: DO NOT FILE FRZBE, OGGER, SMOGS TRANSITIONS - TO BE ASSIGNED BY ATC.  
 KOLBR TRANSITION - GPS REQUIRED.

**FIXES AND/OR HOLDING PATTERNS:**

CHART HOLDING AT BAGGS: HOLD NW, RT, 127.90 INBOUND, 11 NM LEGS.  
 CHART HOLDING AT EGAME: HOLD N, LT, 166.07 INBOUND, 11 NM LEGS.  
 CHART HOLDING AT FRZBE: HOLD NW, LT, 149.14 INBOUND, 11 NM LEGS.  
 CHART HOLDING AT JOSFF: HOLD NW, RT, 148.54 INBOUND, 10 NM LEGS.  
 CHART HOLDING AT OGGER: HOLD N, RT, 162.16 INBOUND, 11 NM LEGS.  
 CHART HOLDING AT SMOGS: HOLD W, RT, 105.30 INBOUND, 11 NM LEGS.  
 CHART HOLDING AT TYNEE: HOLD NW, LT, 148.62 INBOUND, 7 NM LEGS.  
 CHART: OBELL, NABAC STAND-ALONE WAYPOINTS.

**COMMUNICATIONS:**

**AIRPORTS SERVED:**

<u>AIRPORT ID</u>	<u>CITY</u>	<u>STATE</u>
RSW	FORT MYERS	FL
FMY	FORT MYERS	FL

**LOST COMMUNICATIONS PREFERENCES:**

RSW LANDING RWY 6: AFTER SAANN, CONTINUE TO OBELL, THEN CONDUCT RWY 6 APPROACH.  
 RSW LANDING RWY 24: AFTER COOPR, CONTINUE TO NABAC, THEN CONDUCT RWY 24 APPROACH.

**REMARKS:**

ENVIRONMENTAL REVIEW UNDER ORDER 1050.1 (LATEST EDITION) AND THE NOISE SCREENING HAVE BEEN ACCOMPLISHED.  
 ASSUMED 295 FT SHIP HEIGHT FOR OBSTS OVER WATER.  
 MEA ALTITUDES ARE THE RESULT OF A COMBINATION OF FACTORS TO INCLUDE: LACK OF AVAILABLE NAVAIDS FOR DME/DME ANALYSIS OVER THE ATLANTIC; AVOID CRITICAL DME;  
 ENVIRONMENTAL IMPACT OF NOISE ANALYSIS.  
 LOWEST ASSIGNED ATC ALTITUDE AT SAANN AND BANYN, 5000.



FEDERAL AVIATION ADMINISTRATION  
 FLIGHT STANDARDS SERVICE  
 STANDARD TERMINAL ARRIVAL (STAR)

Bearings, headings, courses, tracks and radials are magnetic. Elevations and altitudes are in feet, MSL. Altitudes are minimum altitudes unless otherwise indicated. Ceilings are in feet above airport elevation. Distances are in nautical miles. Visibilities are in statute miles or feet RVR unless otherwise indicated.

Arrival Name	Number	STAR Computer Code	Superseded Number	Dated	Effective Date
TYNEE (RNAV)	FOUR	TYNEE.TYNEE4	THREE	10/31/2024	12 JUN 2025

**ADDITIONAL FLIGHT DATA:**

DME/DME ASSESSMENT: SAT (RNP 2.0)  
 MAG VAR: RSW 04W/2000  
 CHART AT COOPR TERMINUS: RSW LDG RWY 24.  
 CHART AT SAANN TERMINUS: RSW LDG RWY 6.  
 CHART AT BANYN TERMINUS: LDG FMY.

**FLIGHT INSPECTED BY:**

ROBERT E WILLIAMS

**ORGANIZATION:**

AJF

**DATE:**

02/26/2025

Flight Inspected Signature:

*Digitally signed by*

**CASIMIR L TABAKA**

Feb 28, 2025

**DEVELOPED BY:**

CASIMIR TABAKA (BARBARA GORMAN)

AJV-A432

12/10/2024

Developed By Signature:

*Digitally signed by*

**CASIMIR L TABAKA**

Feb 28, 2025

**APPROVED BY:**

CASIMIR TABAKA

AJV-A430

Approved By Signature:

*Digitally signed by*

**CASIMIR L TABAKA**

Feb 28, 2025

**CHANGES:**

1. REMOVED DOWRY EN ROUTE TRANSITION TO INCLUDE REMOVAL OF WP DOWRY AND CIGAR.
2. ADDED KOLBR ENROUTE TRANSITION; INCLUDES NEW WP TEGGS.
3. CHANGED PBN REQUIREMENT "NOTE: DOWRY TRANSITION - GPS ONLY" TO READ "FROM KOLBR:RNAV 1-GPS."
4. ADDED PROCEDURAL DATA NOTE: KOLBR TRANSITION - GPS REQUIRED.
5. REMOVED CHART FORT MYERS APP CONTROL.
6. REMOVED AIRPORT NAMES FROM AIRPORTS SERVED ALONG WITH K IDENT ON 17.1 FORM.

**REASONS:**

- 1/2. ATC REQUEST
3. IAW 8260.19J, 4-5-3.
4. IAW 8260.19J, 4-5-11.
5. AUTOMATICALLY CHARTED IAW 8260.16J 4-5-12(F).
6. PER 8260.19J DOCUMENTATION STANDARDS.

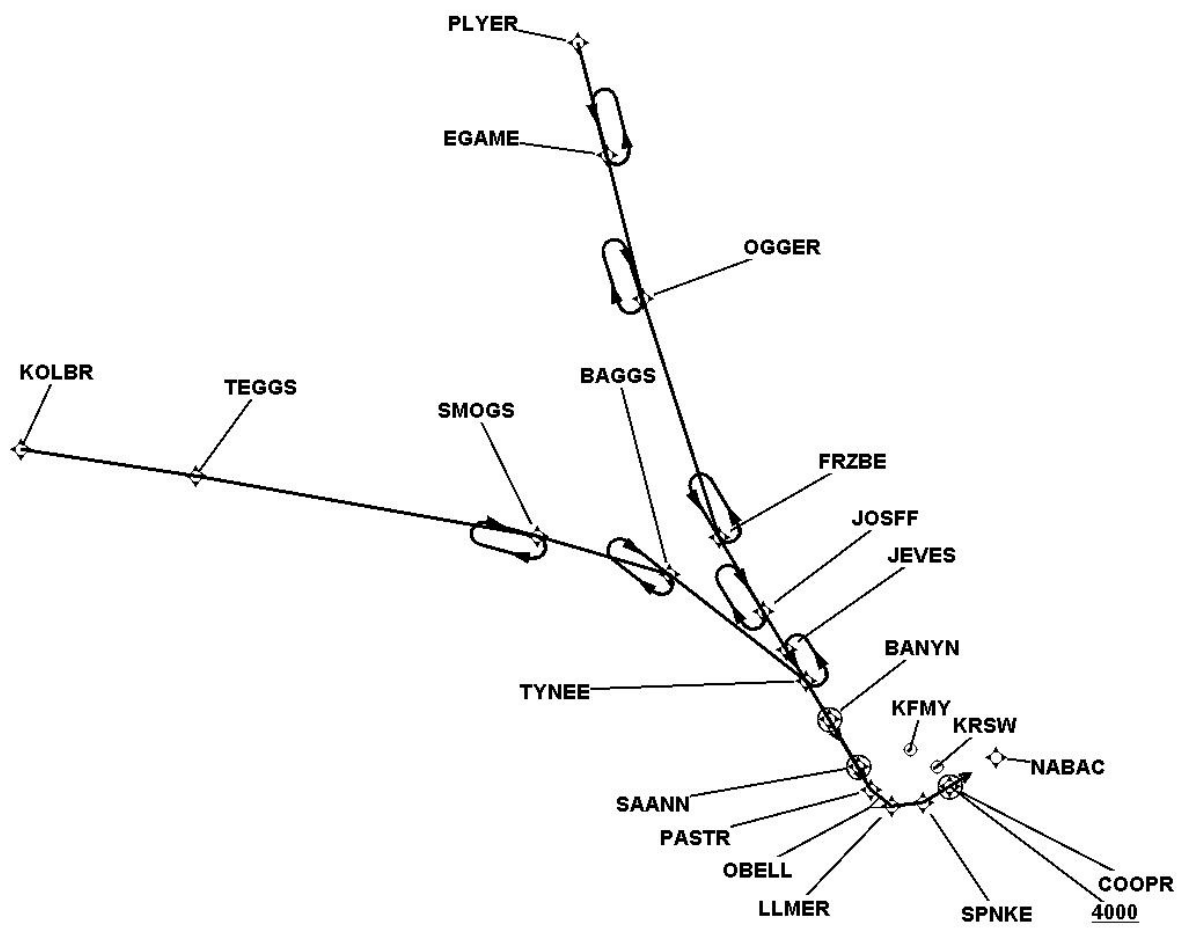


FEDERAL AVIATION ADMINISTRATION  
 FLIGHT STANDARDS SERVICE  
 STANDARD TERMINAL ARRIVAL (STAR)

Bearings, headings, courses, tracks and radials are magnetic. Elevations and altitudes are in feet, MSL. Altitudes are minimum altitudes unless otherwise indicated.  
 Ceilings are in feet above airport elevation. Distances are in nautical miles. Visibilities are in statute miles or feet RVR unless otherwise indicated.

Arrival Name	Number	STAR Computer Code	Superseded Number	Dated	Effective Date
TYNEE (RNAV)	FOUR	TYNEE.TYNEE4	THREE	10/31/2024	12 JUN 2025

Graphic Depiction 1

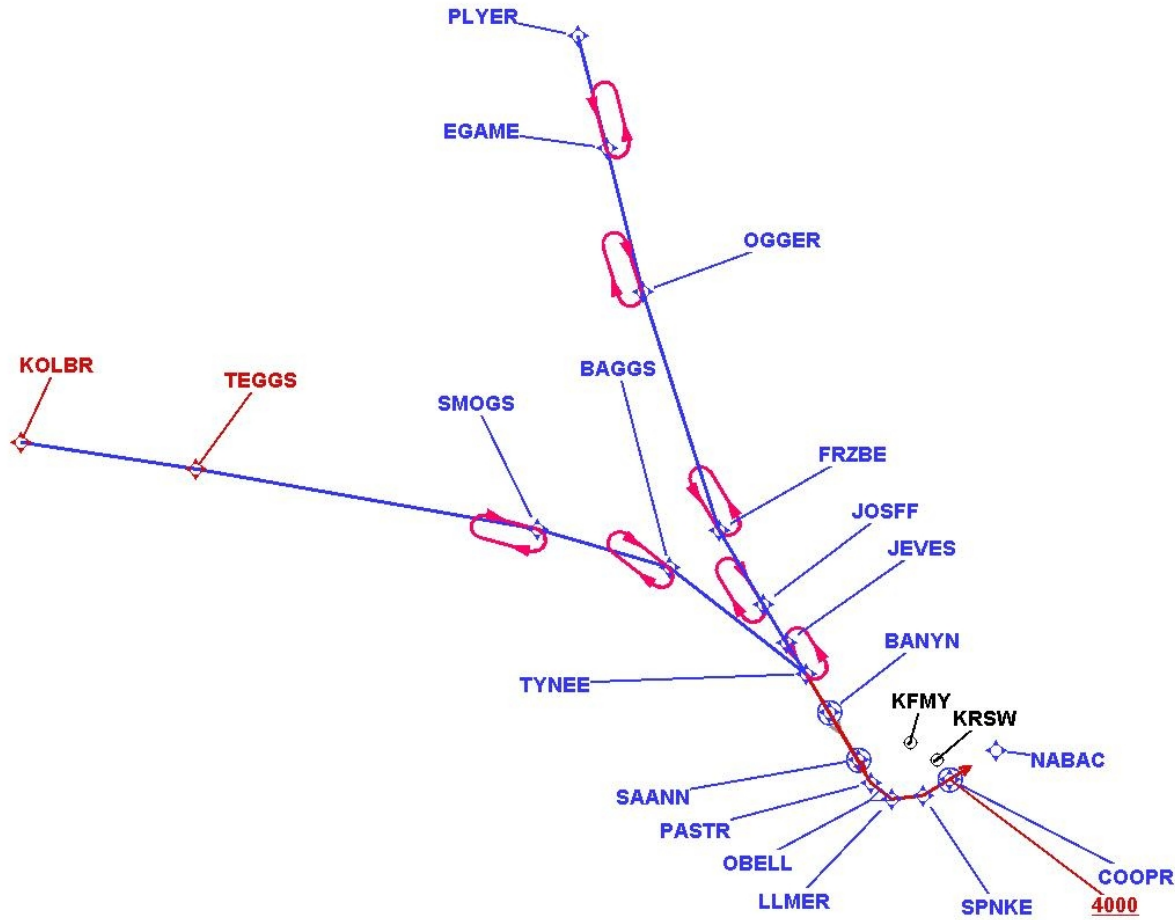


FEDERAL AVIATION ADMINISTRATION  
FLIGHT STANDARDS SERVICE  
STANDARD TERMINAL ARRIVAL (STAR)

Bearings, headings, courses, tracks and radials are magnetic. Elevations and altitudes are in feet, MSL. Altitudes are minimum altitudes unless otherwise indicated.  
Ceilings are in feet above airport elevation. Distances are in nautical miles. Visibilities are in statute miles or feet RVR unless otherwise indicated.

Arrival Name	Number	STAR Computer Code	Superseded Number	Dated	Effective Date
TYNEE (RNAV)	FOUR	TYNEE.TYNEE4	THREE	10/31/2024	12 JUN 2025

Graphic Depiction 2

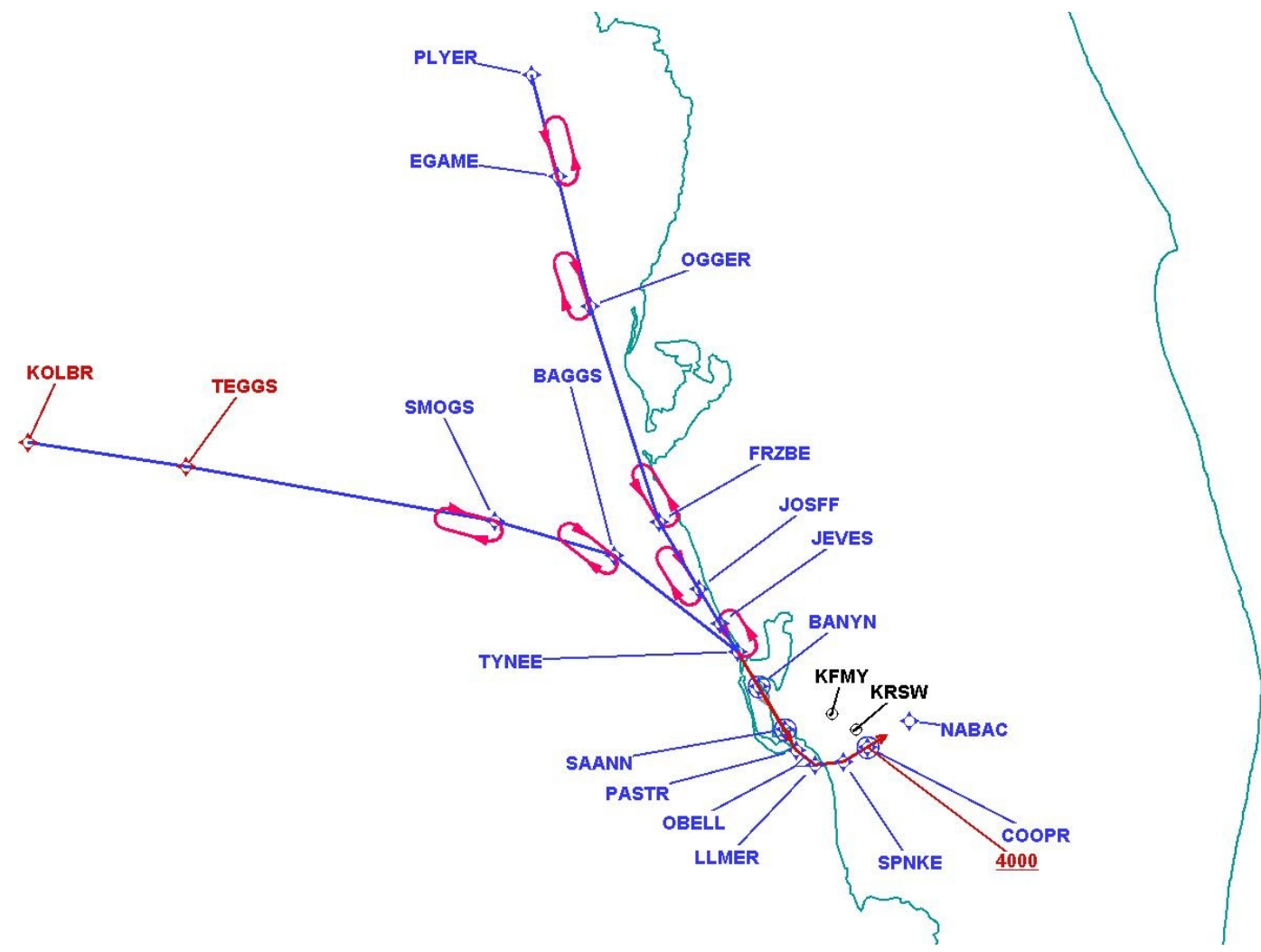


FEDERAL AVIATION ADMINISTRATION  
 FLIGHT STANDARDS SERVICE  
 STANDARD TERMINAL ARRIVAL (STAR)

Bearings, headings, courses, tracks and radials are magnetic. Elevations and altitudes are in feet, MSL. Altitudes are minimum altitudes unless otherwise indicated. Ceilings are in feet above airport elevation. Distances are in nautical miles. Visibilities are in statute miles or feet RVR unless otherwise indicated.

Arrival Name	Number	STAR Computer Code	Superseded Number	Dated	Effective Date
TYNEE (RNAV)	FOUR	TYNEE.TYNEE4	THREE	10/31/2024	12 JUN 2025

Graphic Depiction 3



FEDERAL AVIATION ADMINISTRATION  
 FLIGHT STANDARDS SERVICE  
 STAR (DATA RECORD)

<b>Arrival Name</b> TYNEE (RNAV)	<b>Number</b> FOUR	<b>STAR Computer Code</b> TYNEE.TYNEE4	<b>Superseded Number</b> THREE	<b>Dated</b> 10/31/2024	<b>Effective Date</b> 12 JUN 2025
-------------------------------------	-----------------------	---	-----------------------------------	----------------------------	--------------------------------------

<u>FIX/NAVAID</u>	<u>LAT/LONG</u>	<u>C</u>	<u>FO/FB</u>	<u>LEG TYPE</u>	<u>TC</u>	<u>DIST (NM)</u>	<u>ALTITUDE</u>	<u>SPEED</u>	<u>REMARKS</u>
En Route Transition									
FRZBE	271624.53N / 0823928.03W	Y		IF					FRZBE.TYNEE4
JOSFF	270135.32N / 0822756.71W	Y	FB	TF	145.14	18.00			
JEVES	265404.77N / 0822158.91W	Y	FB	TF	144.54	09.19			
TYNEE	264750.66N / 0821702.65W	Y	FB	TF	144.59	07.63			

En Route Transition									
KOLBR	272431.42N / 0852234.37W	Y		IF					KOLBR.TYNEE4
TEGGS	272131.35N / 0844146.35W	Y	FB	TF	094.55	36.44			
SMOGS	271354.93N / 0832133.48W	Y	FB	TF	095.75	71.86			
BAGGS	270803.28N / 0825027.20W	Y	FB	TF	101.78	28.35			
TYNEE	264750.66N / 0821702.65W	Y	FB	TF	123.90	36.02			

En Route Transition									
OGGER	280443.19N / 0830107.67W	Y		IF					OGGER.TYNEE4
FRZBE	271624.53N / 0823928.03W	Y	FB	TF	158.16	51.87			
JOSFF	270135.32N / 0822756.71W	Y	FB	TF	145.14	18.00			
JEVES	265404.77N / 0822158.91W	Y	FB	TF	144.54	09.19			
TYNEE	264750.66N / 0821702.65W	Y	FB	TF	144.59	07.63			

En Route Transition									
PLYER	285651.36N / 0832008.59W	Y		IF					PLYER.TYNEE4
EGAME	283351.38N / 0831145.28W	Y	FB	TF	162.15	24.10			
OGGER	280443.19N / 0830107.67W	Y	FB	TF	162.07	30.54			
FRZBE	271624.53N / 0823928.03W	Y	FB	TF	158.16	51.87			
JOSFF	270135.32N / 0822756.71W	Y	FB	TF	145.14	18.00			
JEVES	265404.77N / 0822158.91W	Y	FB	TF	144.54	09.19			
TYNEE	264750.66N / 0821702.65W	Y	FB	TF	144.59	07.63			



FEDERAL AVIATION ADMINISTRATION  
 FLIGHT STANDARDS SERVICE  
 STAR (DATA RECORD)

Arrival Name TYNEE (RNAV)	Number FOUR	STAR Computer Code TYNEE.TYNEE4		Superseded Number THREE	Dated 10/31/2024	Effective Date 12 JUN 2025			
<u>FIX/NAVAID</u>	<u>LAT/LONG</u>	<u>C</u>	<u>FO/FB</u>	<u>LEG TYPE</u>	<u>TC</u>	<u>DIST (NM)</u>	<u>ALTITUDE</u>	<u>SPEED</u>	<u>REMARKS</u>
En Route Transition									
SMOGS	271354.93N / 0832133.48W	Y		IF					SMOGS.TYNEE4
BAGGS	270803.28N / 0825027.20W	Y	FB	TF	101.78	28.35			
TYNEE	264750.66N / 0821702.65W	Y	FB	TF	123.90	36.02			
Common Route									
TYNEE	264750.66N / 0821702.65W	Y		IF					TYNEE.TYNEE4
BANYN	264016.90N / 0821104.48W	Y	FO	TF	144.65	09.24			
KFMY				FM	144.65				
Runway Transition									
TYNEE	264750.66N / 0821702.65W	Y		IF					
SAANN	263053.22N / 0820340.00W	Y	FO	TF	144.62	20.73			
KRSW:RWY 6				FM	144.62				
Runway Transition									
TYNEE	264750.66N / 0821702.65W	Y		IF					
PASTR	262624.99N / 0820009.33W	Y	FB	TF	144.62	26.18			
LLMER	262321.00N / 0815516.00W	Y	FB	TF	124.84	05.35			
SPNKE	262418.90N / 0814750.77W	Y	FB	TF	081.76	06.73			
COOPR	262806.11N / 0814201.65W	Y	FO	TF	054.11	06.44	AT/ABOVE 4000		
KRSW:RWY 24				FM	054.11				

