

FEDERAL AVIATION ADMINISTRATION  
FLIGHT STANDARDS SERVICE  
STANDARD TERMINAL ARRIVAL (STAR)

Bearings, headings, courses, tracks and radials are magnetic. Elevations and altitudes are in feet, MSL. Altitudes are minimum altitudes unless otherwise indicated.  
Ceilings are in feet above airport elevation. Distances are in nautical miles. Visibilities are in statute miles or feet RVR unless otherwise indicated.

Arrival Name	Number	STAR Computer Code	Superseded Number	Dated	Effective Date
<b>WINRZ (RNAV)</b>	<b>ONE</b>	<b>WADOL.WINRZ1</b>	<b>NONE</b>		<b>25JAN2024</b>

TRANSITION ROUTES:

Transition Name	Transition Computer Codes	From FIX/NAVAID	To FIX/NAVAID	Course	Distance	MEA	MOCA	MAA	Crossing Altitudes / Fixes
MYBAD	MYBAD.WINRZ1	MYBAD	MYBAD						
			WHATZ	225.95	05.00	9300	9300		
			WADOL	225.89	09.09	9300	9300		

ARRIVAL ROUTE DESCRIPTION:

FROM WADOL ON TRACK 229.98/28.12 TO UUPPP, THEN ON TRACK 229.63/14.45 TO CROSS HOSME AT OR ABOVE 13000 AND AT 250 KIAS, THEN ON TRACK 225.10/8.31 TO CROSS WINRZ AT 11000 AND AT 230 KIAS, THEN ON HEADING 223.00. EXPECT ASSIGNED INSTRUMENT APPROACH FOR RWY 17L/R OR RADAR VECTORS TO FINAL APPROACH COURSE.

PBN REQUIREMENT NOTES:

RNAV 1 - GPS

EQUIPMENT REQUIREMENT NOTES:

RADAR REQUIRED

PROCEDURAL DATA NOTES:

NOTE: GPS REQUIRED.

FIXES AND/OR HOLDING PATTERNS:

CHART HOLDING AT HOSME: HOLD NE, RT, 229.63 INBOUND, 10 NM LEGS.

CHART HOLDING AT MUSTANG VORTAC: HOLD NE, LT, 221.13 INBOUND, 7 NM LEGS.

COMMUNICATIONS:

CHART: RENO TOWER

CHART: NORCAL APP CON

AIRPORTS SERVED:

<u>AIRPORT ID</u>	<u>CITY</u>	<u>STATE</u>
KRNO	RENO	NV

LOST COMMUNICATIONS PREFERENCES:

AT WINRZ, PROCEED INBOUND VIA RWY 17R ILS APPROACH. IF UNABLE, DIRECT TO FMG VORTAC AND HOLD.

REMARKS:

DO NOT CHART MOCA VALUE AT WHATZ/WADOL.

HOSME HOLDING IS FOR ZOA AIRSPACE ONLY AND NOT TO BE LOWER THAN FL200.

THIS STAR DOES NOT SERVE RWY 17L IAP.

QUALITY  
14  
CHECKED

FEDERAL AVIATION ADMINISTRATION  
FLIGHT STANDARDS SERVICE  
STANDARD TERMINAL ARRIVAL (STAR)

Bearings, headings, courses, tracks and radials are magnetic. Elevations and altitudes are in feet, MSL. Altitudes are minimum altitudes unless otherwise indicated.  
Ceilings are in feet above airport elevation. Distances are in nautical miles. Visibilities are in statute miles or feet RVR unless otherwise indicated.

Arrival Name	Number	STAR Computer Code	Superseded Number	Dated	Effective Date
<b>WINRZ (RNAV)</b>	<b>ONE</b>	<b>WADOL.WINRZ1</b>	<b>NONE</b>		<b>25JAN2024</b>

**ADDITIONAL FLIGHT DATA:**

DME/DME ASSESSMENT: UNSAT.  
MAG VAR: KRNO 13E/2020.  
CHART AT WINRZ TERMINUS: KRNO LDG RWY 17L/R.  
CHART: CAUTION: INTENSE GLIDER ACTIVITY TO FL180.  
CHART: ILS RWY 17R.

**FLIGHT INSPECTED BY:**

THOMAS E MOLOKIE

**ORGANIZATION:**

FPO

**DATE:**

11/21/2023

Flight Inspected Signature:

*Digitally signed by***ROBERT G HAMILTON**

Nov 28, 2023

**DEVELOPED BY:**

KWEKU DONKOR

*Digitally signed by***KWEKU DONKOR**

Aug 31, 2023

AJV-A433

8/16/2023

Developed By Signature:

**APPROVED BY:**

JOHNNIE BAKER

*Digitally signed by***ERIC N SUSKI**

AJV-A430

Approved By Signature:

**CHANGES:**

Sep 13, 2023

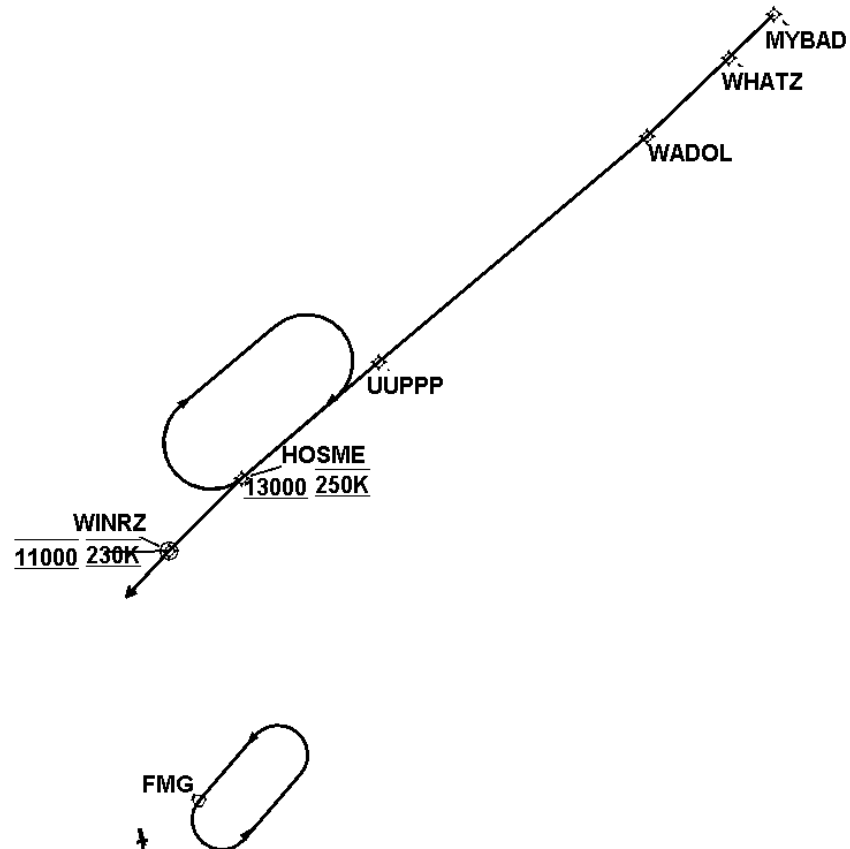
**REASONS:**

QUALITY  
14  
CHECKED

FEDERAL AVIATION ADMINISTRATION  
FLIGHT STANDARDS SERVICE  
STANDARD TERMINAL ARRIVAL (STAR)

Bearings, headings, courses, tracks and radials are magnetic. Elevations and altitudes are in feet, MSL. Altitudes are minimum altitudes unless otherwise indicated.  
Ceilings are in feet above airport elevation. Distances are in nautical miles. Visibilities are in statute miles or feet RVR unless otherwise indicated.

Arrival Name	Number	STAR Computer Code	Superseded Number	Dated	Effective Date
<b>WINRZ (RNAV)</b>	<b>ONE</b>	<b>WADOL.WINRZ1</b>	<b>NONE</b>		<b>25JAN2024</b>
Graphic Depiction 1					



FEDERAL AVIATION ADMINISTRATION  
FLIGHT STANDARDS SERVICE  
STAR (DATA RECORD)

Arrival Name		Number		STAR Computer Code		Superseded Number		Dated	Effective Date
WINRZ (RNAV)		ONE		WADOL.WINRZ1		NONE			25JAN2024
<u>FIX/NAVAID</u>	<u>LAT/LONG</u>	<u>C</u>	<u>FO/FB</u>	<u>LEG</u> <u>TYPE</u>	<u>TC</u>	<u>DIST</u> <u>(NM)</u>	<u>ALTITUDE</u>	<u>SPEED</u>	<u>REMARKS</u>
En Route Transition									
MYBAD	402316.23N / 1182222.96W	Y		IF					MYBAD.WINRZ1
WHATZ	402041.26N / 1182759.11W	Y	FB	TF	238.95	05.00			
WADOL	401558.86N / 1183809.10W	Y	FB	TF	238.89	09.09			
Common Route									
WADOL	401558.86N / 1183809.10W	Y		IF					WADOL.WINRZ1
UUPPP	400307.38N / 1191046.29W	Y	FB	TF	242.98	28.12			
HOSME	395627.34N / 1192727.37W	Y	FB	TF	242.63	14.45	AT/ABOVE 13000	AT 250K	
WINRZ	395203.36N / 1193636.92W	Y	FO	TF	238.10	08.31	AT 11000	AT 230K	
KRNO				VM	236.00				

