

**FEDERAL AVIATION ADMINISTRATION
FLIGHT STANDARDS SERVICE
CHARTED VISUAL FLIGHT PROCEDURE (CVFP)**

Bearings, headings, courses, tracks and radials are magnetic. Elevations and altitudes are in feet, MSL. Altitudes are minimum altitudes unless otherwise indicated.
Ceilings are in feet above airport elevation. Distances are in nautical miles. Visibilities are in statute miles or feet RVR unless otherwise indicated.

<u>AIRPORT ID</u>	<u>CVFP NAME</u>	<u>ORIG/AMDT</u>	<u>CITY</u>	<u>STATE</u>	<u>SUPERSEDES</u>	<u>AMDT NO.</u>	<u>DATED</u>	<u>EFFECTIVE DATE</u>
KLGA	PARK VISUAL RWY 31	1	NEW YORK	NY	PARK VISUAL RWY 31	ORIG	22 Apr 21	24 MAR 2022

VISUAL ARRIVAL ROUTE:

FROM (Visual Landmarks)	TO (Visual Landmarks)	COURSE (if desired)	ALTITUDE (if needed) Show if for Class B
ONE MILE SOUTHEAST OF THE VERRAZZANO-NARROWS BRIDGE	PROSPECT PARK	044.04	3000
PROSPECT PARK	ONE HALF MILE SOUTHEAST OF THE SEVEN HIGH RISES	045.33	2500
ONE HALF MILE SOUTHEAST OF THE SEVEN HIGH RISES	ONE MILE EAST OF THE TWIN WHITE TANKS	059.12	2200
ONE MILE EAST OF THE TWIN WHITE TANKS	FLUSHING MEADOWS CORONA PARK LAKE	089.10	1100
FLUSHING MEADOWS CORONA PARK LAKE	ONE THIRD MILE SOUTHEAST OF FLUSHING MEADOWS CORONA PARK ROUND POND	044.13	700
ONE THIRD MILE SOUTHEAST OF FLUSHING MEADOWS CORONA PARK ROUND POND	ONE HALF MILE NORTHEAST OF STADIUM	359.14	400
ONE HALF MILE NORTHEAST OF STADIUM	RW31	314.15	

WEATHER MINIMA:CEILING: 3000 VISIBILITY: 5**NOTES:** —

1. RADAR REQUIRED.
2. RECOMMEND ALTITUDES ARE FOR NOISE ABATEMENT.

SUPPLEMENTARY NAVAID / WAYPOINT INFORMATION AND ADDITIONAL LANDMARKS:

CHART WITH THE CORRESPONDING LAND MARKS:
 VERRAZZANO-NARROWS BRIDGE / BENNG; PROSPECT PARK / PACHU; SEVEN HIGH RISES / SHAYY; TWIN WHITE TANKS / GACAR; FLUSHING MEADOWS CORONA PARK LAKE / DRRYL; FLUSHING MEADOWS CORONA PARK ROUND POND / KEYTH; STADIUM / DCTRK
 CHART SPEED ICON IN PLANVIEW AT SHAYY 180 KIAS; GACAR: 165 KIAS
 CHART CROSSING ALTITUDE AT/ABOVE 3000 AT PACHU; AT/ABOVE 2500 AT SHAYY
 (LGA) LOC RWY 4, (PZV) LOC RWY 31
 CHART PLANVIEW NOTE: I-PZV LOC OFFSET 1.71 DEGREES.
 NOTE: VDA FROM GACAR TO RWY 31: 3.20/50
 CHART NOTE: ADVISE ATC OF THE AIRPORT, TWIN WHITE TANKS, OR PRECEDING AIRCRAFT IN SIGHT.

VERTICAL GUIDANCE NAVAID AND ANGLE: RWY 31 PAPI 3.00/71

**FEDERAL AVIATION ADMINISTRATION
FLIGHT STANDARDS SERVICE
CHARTED VISUAL FLIGHT PROCEDURE (CVFP)**

Bearings, headings, courses, tracks and radials are magnetic. Elevations and altitudes are in feet, MSL. Altitudes are minimum altitudes unless otherwise indicated.
Ceilings are in feet above airport elevation. Distances are in nautical miles. Visibilities are in statute miles or feet RVR unless otherwise indicated.

<u>AIRPORT ID</u>	<u>CVFP NAME</u>	<u>ORIG/AMDT</u>	<u>CITY</u>	<u>STATE</u>	<u>SUPERSEDES</u>	<u>AMDT NO.</u>	<u>DATED</u>	<u>EFFECTIVE DATE</u>
KLGA	PARK VISUAL RWY 31	1	NEW YORK	NY	PARK VISUAL RWY 31	ORIG	22 Apr 21	24 MAR 2022

DESCRIPTION OF ROUTE:

(PRINT ON CHART) When cleared for the PARK VISUAL RWY 31 aircraft may proceed via the RNAV (GPS) X RWY 31 approach to Rwy 31 and/or cross PACHU at 3000 or above and tracking 045° to SHAYY at or below 180K (Seven High Rises) at 2500 or above and turn right tracking 059° to GACAR at or below 165K (Twin White Tanks) then turn right tracking 089° to DRRYL (Flushing Meadows Corona Park Lake) then turn left tracking 044° to KEYTH (Flushing Meadows Corona Park Round Pond) then left turn tracking 359° to DCTRK (stadium) then left turn direct RWY 31.

COMMUNICATION:

ATIS, LGA ATCT, LGA GND CON, NY APP CON, CLNC DEL, CPDLC



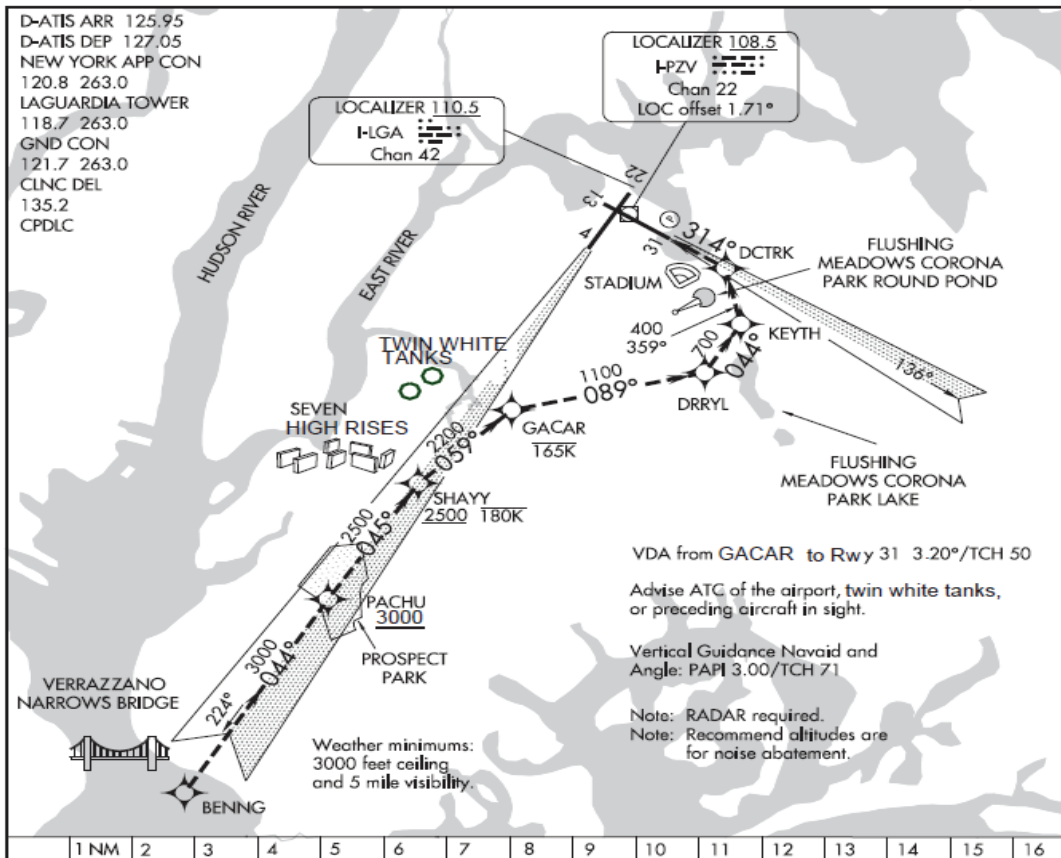
**FEDERAL AVIATION ADMINISTRATION
FLIGHT STANDARDS SERVICE
CHARTED VISUAL FLIGHT PROCEDURE (CVFP)**

Bearings, headings, courses, tracks and radials are magnetic. Elevations and altitudes are in feet, MSL. Altitudes are minimum altitudes unless otherwise indicated.
Ceilings are in feet above airport elevation. Distances are in nautical miles. Visibilities are in statute miles or feet RVR unless otherwise indicated.

AIRPORT ID	CVFP NAME	ORIG/AMDT	CITY	STATE	SUPERSEDES	AMDT NO.	DATED	EFFECTIVE DATE
KLGA	PARK VISUAL RWY 31	1	NEW YORK	NY	PARK VISUAL RWY 31	ORIG	22 Apr 21	24 MAR 2022

GRAPHIC DEPICTION:**PARK VISUAL RWY 31**

LAGUARDIA (LGA)
NEW YORK, NEW YORK

**PARK VISUAL RWY 31 APPROACH**

When cleared for the PARK VISUAL RWY 31 aircraft may proceed via the RNAV (GPS) X RWY 31 approach to Rwy 31 and/or cross PACHU at 3000 or above and tracking 045° to SHAYY at or below 180K (Seven High Rises) at 2500 or above and turn right tracking 059° to GACAR at or below 165K (Twin White Tanks) then turn right tracking 089° to DRRYL (Flushing Meadows Corona Park Lake) then turn left tracking 044° to KEYTH (Flushing Meadows Corona Park Round Pond) then left turn tracking 359° to DCTRK (stadium) then left turn direct RWY 31.

QUALITY
2
CHECKED

**FEDERAL AVIATION ADMINISTRATION
FLIGHT STANDARDS SERVICE
CHARTED VISUAL FLIGHT PROCEDURE (CVFP)**

Bearings, headings, courses, tracks and radials are magnetic. Elevations and altitudes are in feet, MSL. Altitudes are minimum altitudes unless otherwise indicated.
Ceilings are in feet above airport elevation. Distances are in nautical miles. Visibilities are in statute miles or feet RVR unless otherwise indicated.

<u>AIRPORT ID</u>	<u>CVFP NAME</u>	<u>ORIG/AMDT</u>	<u>CITY</u>	<u>STATE</u>	<u>SUPERSEDES</u>	<u>AMDT NO.</u>	<u>DATED</u>	<u>EFFECTIVE DATE</u>
KLGA	PARK VISUAL RWY 31	1	NEW YORK	NY	PARK VISUAL RWY 31	ORIG	22 Apr 21	24 MAR 2022

FLIGHT INSPECTED BY:		<i>Digitally signed by</i>	ORGANIZATION:	DATE:	
BOB S PRESSLER		ALLAN WILL	FPO	01/11/2022	FLIGHT INSPECTION SIGNATURE:
		Jan 12, 2022			
DEVELOPED BY:		<i>Digitally signed by</i>			
MICHAEL W HARRIS		MICHAEL W HARRIS	AJV-A423	10/13/2021	DEVELOPED BY SIGNATURE:
		Nov 23, 2021			
APPROVED BY:		<i>Digitally signed by</i>			
MARLON ROBINSON, MANAGER		JASON KRETSCHMER	AJV-A420		APPROVED BY SIGNATURE:
		Dec 06, 2021			

CHANGES - REASONS:

1. ADDED CHART CROSSING ALTITUDE AT/ABOVE 3000 AT PACHU - ATC REQUEST.
2. REMOVED CHART NOTE GPS REQUIRED - AFS REQUEST.
3. CHANGED CHARTED ROUTE DESCRIPTION FROM "WHEN CLEARED FOR THE PARK VISUAL AIRCRAFT MAY PROCEED VIA THE (SPECIAL RNAV (GPS) X RWY 31) APPROACH TO RWY 31 AND/OR CROSS GACAR AT OR BELOW 180 KTS (SEVEN TOWERS) AT 2500 OR ABOVE AND TURN RIGHT TRACKING 059° TO SHAYY AT OR BELOW 165 KTS (FOUR TOWERS) THEN RIGHT TURN TRACKING 089° TO DRRYL (FLUSHING MEADOWS PARK LAKE) THEN TURN LEFT TRACKING 044° TO KEYTH (FLUSHING MEADOWS PARK ROUND POND) THEN LEFT TURN TRACKING 359° TO DCTRK (STADIUM) THE LEFT TURN DIRECT RWY 31" TO "WHEN CLEARED FOR THE PARK VISUAL RWY 31 AIRCRAFT MAY PROCEED VIA THE RNAV (GPS) X RWY 31 APPROACH TO RWY 31 AND/OR CROSS PACHU AT 3000 OR ABOVE AND TRACKING 045° TO SHAYY AT OR BELOW 180 KTS (SEVEN HIGH RISES) AT 2500 OR ABOVE AND TURN RIGHT TRACKING 059° TO GACAR AT OR BELOW 165 KTS (TWIN WHITE TANKS) THEN TURN RIGHT TRACKING 089° TO DRRYL (FLUSHING MEADOWS CORONA PARK LAKE) THEN TURN LEFT TRACKING 044° TO KEYTH (FLUSHING MEADOWS CORONA PARK ROUND POND) THEN LEFT TURN TRACKING 359° TO DCTRK (STADIUM) THEN LEFT TURN DIRECT RWY 31" - AFS/N90 REQUEST.
4. SWAPPED FIX NAMES SHAYY AND GACAR - ATC REQUEST.
5. UPDATED ALL REFERENCES TO THE VISUAL LANDMARK FOUR TOWERS TO TWIN WHITE TANKS - PENDING DEMOLITION OF THE FOUR RADIO TOWERS.
6. CORRECTED SPELLING OF VERRAZZANO NARROWS BRIDGE - CLERICAL UPDATE.
7. UPDATED NOTE FROM "CHART SPEED ICON IN PLANVIEW AT GACAR: 180 KIAS; SHAYY: 165 KIAS" TO "CHART SPEED ICON IN PLANVIEW AT SHAYY: 180 KIAS; GACAR: 165 KIAS" - ATC REQUEST TO SWAP FIX NAMES SHAYY AND GACAR.

QUALITY
2
CHECKED