

FEDERAL AVIATION ADMINISTRATION
FLIGHT STANDARDS SERVICE
STANDARD TERMINAL ARRIVAL (STAR)

Bearings, headings, courses, tracks and radials are magnetic. Elevations and altitudes are in feet, MSL. Altitudes are minimum altitudes unless otherwise indicated.
Ceilings are in feet above airport elevation. Distances are in nautical miles. Visibilities are in statute miles or feet RVR unless otherwise indicated.

Arrival Name	Number	STAR Computer Code	Superseded Number	Dated	Effective Date
ALWYS (RNAV)	THREE	DYAMD.ALWYS3	TWO	9/13/2018	11 Jul 2024

TRANSITION ROUTES:

Transition Name	Transition Computer Codes	From FIX/NAVAID	To FIX/NAVAID	Course	Distance	MEA	MOCA	MAA	Crossing Altitudes / Fixes
INYOE	INYOE.ALWYS3	INYOE	INYOE						
			DYAMD	247.92	78.85	FL200	15300		AT/ABOVE FL270
RUSME	RUSME.ALWYS3	RUSME	RUSME						
			DYAMD	261.98	138.08	FL200	15800		AT/ABOVE FL270

ARRIVAL ROUTE DESCRIPTION:

FROM DYAMD ON TRACK 247.72/16.51 TO CROSS LAANE BETWEEN FL220 AND FL260 AND AT 260 KIAS, THEN ON TRACK 247.44/10.22 TO ALWYS.

LANDING RWY 10L/R: FROM ALWYS ON TRACK 269.23/12.99 TO CROSS HEFLY BETWEEN 14000 AND FL190 AND AT 250 KIAS, THEN ON TRACK 269.06/13.59 TO CROSS ARRTU AT 10000 AND AT 240 KIAS, THEN ON TRACK 268.97/10.04 TO CROSS ADDMM AT 9000 AND AT 240 KIAS, THEN ON TRACK 268.81/13.04 TO CROSS COGGR BETWEEN 7000 AND 9000 AND AT 210 KIAS, THEN ON TRACK 268.71/11.47 TO CROSS BERKS AT OR ABOVE 5000 AND AT 210 KIAS, THEN ON TRACK 268.71. EXPECT RADAR VECTORS TO FINAL APPROACH COURSE.

LANDING RWY 19L/R: FROM ALWYS ON TRACK 269.23/12.99 TO CROSS HEFLY BETWEEN 14000 AND FL190 AND AT 250 KIAS, THEN ON TRACK 269.06/13.59 TO CROSS ARRTU AT 10000 AND AT 240 KIAS, THEN ON TRACK 268.97/10.04 TO CROSS ADDMM AT 9000 AND AT 240 KIAS, THEN ON TRACK 268.81/13.04 TO CROSS COGGR BETWEEN 7000 AND 9000 AND AT 210 KIAS, THEN ON TRACK 268.71/11.47 TO CROSS BERKS AT OR ABOVE 5000 AND AT 210 KIAS, THEN ON TRACK 268.71. EXPECT ILS OR RNAV (GPS) APPROACH TO RWY 19L, OR RADAR VECTORS TO FINAL APPROACH COURSE.

PBN REQUIREMENT NOTES:

RNAV 1 - DME/DME/IRU OR GPS

EQUIPMENT REQUIREMENT NOTES:

RADAR REQUIRED

PROCEDURAL DATA NOTES:

NOTE: EXPECT "DESCEND VIA" CLEARANCE FROM OAKLAND CENTER. NORTHERN CALIFORNIA TRACON WILL ASSIGN LANDING RUNWAY.

FIXES AND/OR HOLDING PATTERNS:

CHART HOLDING AT ALWYS: HOLD NE, LT, 247.44 INBOUND, 10 NM LEGS.

CHART HOLDING AT HEFLY: HOLD E, LT, 269.23 INBOUND, 10 NM LEGS.

CHART HOLDING AT INYOE: HOLD E, LT, 247.92 INBOUND, 16 NM LEGS.

COMMUNICATIONS:

CHART: OAKLAND CENTER.

CHART: NORCAL APP CON.

CHART: SAN FRANCISCO TWR.

CHART: SAN FRANCISCO GND CON.

AIRPORTS SERVED:

AIRPORT ID
KSFO

CITY
SAN FRANCISCO

STATE
CA

QUALITY
14
CHECKED

FEDERAL AVIATION ADMINISTRATION
FLIGHT STANDARDS SERVICE
STANDARD TERMINAL ARRIVAL (STAR)

Bearings, headings, courses, tracks and radials are magnetic. Elevations and altitudes are in feet, MSL. Altitudes are minimum altitudes unless otherwise indicated.
Ceilings are in feet above airport elevation. Distances are in nautical miles. Visibilities are in statute miles or feet RVR unless otherwise indicated.

Arrival Name	Number	STAR Computer Code	Superseded Number	Dated	Effective Date
ALWYS (RNAV)	THREE	DYAMD.ALWYS3	TWO	9/13/2018	11 Jul 2024

LOST COMMUNICATIONS PREFERENCES:REMARKS:

ATC SPECIFICALLY REQUESTS FM LEGS (REQUIRES FO AT TERMINUS); MIGHT CAUSE IAP CONNECTIVITY ISSUES FOR SOME AIRCRAFT (AIRBUS/737).

ADDITIONAL FLIGHT DATA:

DME/DME ASSESSMENT: SAT (RNP 2.0)

MAG VAR: KSFO 14E/2015.

CHART AT BERKS TERMINUS: KSFO LDG RWY 19L/R, 10L/R.

<u>FLIGHT INSPECTED BY:</u>	<i>Digitally signed by</i>	<u>ORGANIZATION:</u>	<u>DATE:</u>	
THOMAS E MOLOKIE	ERIC N SUSKI May 23, 2024	FPO	05/21/2024	Flight Inspected Signature: _____
<u>DEVELOPED BY:</u>	<i>Digitally signed by</i>			
Michael A Galvan	ERIC N SUSKI Nov 01, 2023	ZOA Airspace & Procedures Manager	05/15/2023	Developed By Signature: _____
<u>APPROVED BY:</u>	<i>Digitally signed by</i>			
Eric N. Suski	ERIC N SUSKI Nov 01, 2023	AJV-A431		Approved By Signature: _____

CHANGES:

1. ADDED RWYS 10L/R TO THE 19L/R RUNWAY TRANSITION.
2. ADDED LANE AND ALWYS WPs TO THE COMMON ROUTE AND REMOVED THEM FROM THE EN ROUTE TRANSITION.
3. CHANGED STAR COMPUTER CODE FROM ALWYS.ALWYS2 TO DYAMD.ALWYS3.
4. REMOVED RECOMMENDED NAVAID NLC TACAN.
5. ADDED RNAV-1 DME/DME/IRU OR GPS REQUIRED TO PBN REQUIREMENT NOTES.
6. ADDED RADAR REQUIRED TO EQUIPMENT REQUIREMENT NOTES.
7. REMOVED D-ATIS FROM COMMUNICATIONS.
8. CHANGED CHARTED TERMINUS DATA FROM LANDING SFO TO LDG RWY 19L/R, 10L/R.
9. ADDED MOCA VALUES TO FIX DYAMD.



FEDERAL AVIATION ADMINISTRATION
FLIGHT STANDARDS SERVICE
STANDARD TERMINAL ARRIVAL (STAR)

Bearings, headings, courses, tracks and radials are magnetic. Elevations and altitudes are in feet, MSL. Altitudes are minimum altitudes unless otherwise indicated.
Ceilings are in feet above airport elevation. Distances are in nautical miles. Visibilities are in statute miles or feet RVR unless otherwise indicated.

Arrival Name	Number	STAR Computer Code	Superseded Number	Dated	Effective Date
ALWYS (RNAV)	THREE	DYAMD.ALWYS3	TWO	9/13/2018	11 Jul 2024

REASONS:

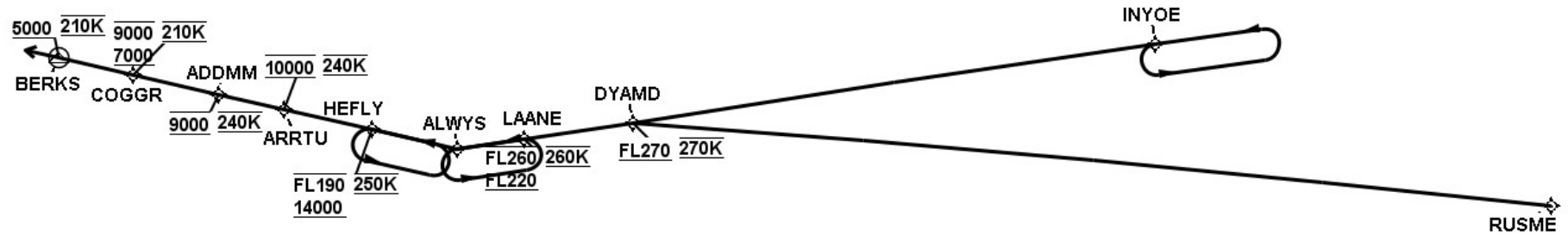
1. ATC REQUEST IAW FAAO 8260.19I 4-5-2 t.
- 2-3. ATC REQUEST FOR CPDLC OPTIMIZATION.
4. IAW FAAO 8260.19I 4-5-12 c.
- 5-7. IAW 8260.19I DOCUMENTATION STANDARDS.
7. AUTOCHARTED.
8. IAW FAAO 8260.19I 4-5-2 h (2) STAR TERMINUS DATA.
9. NEW TERRAIN AND OBSTACLE EVALUATION.



FEDERAL AVIATION ADMINISTRATION
FLIGHT STANDARDS SERVICE
STANDARD TERMINAL ARRIVAL (STAR)

Bearings, headings, courses, tracks and radials are magnetic. Elevations and altitudes are in feet, MSL. Altitudes are minimum altitudes unless otherwise indicated.
Ceilings are in feet above airport elevation. Distances are in nautical miles. Visibilities are in statute miles or feet RVR unless otherwise indicated.

Arrival Name	Number	STAR Computer Code	Superseded Number	Dated	Effective Date
ALWYS (RNAV)	THREE	DYAMD.ALWYS3	TWO	9/13/2018	11 Jul 2024
Graphic Depiction 1					



FEDERAL AVIATION ADMINISTRATION
FLIGHT STANDARDS SERVICE
STAR (DATA RECORD)

Arrival Name ALWYS (RNAV)	Number THREE	STAR Computer Code DYAMD.ALWYS3		Superseded Number TWO		Dated 9/13/2018		Effective Date 11 Jul 2024	
<u>FIX/NAVAID</u>	<u>LAT/LONG</u>	<u>C</u>	<u>FO/FB</u>	<u>LEG TYPE</u>	<u>TC</u>	<u>DIST (NM)</u>	<u>ALTITUDE</u>	<u>SPEED</u>	<u>REMARKS</u>
En Route Transition									
INYOE	375344.24N / 1184553.97W	Y		IF					INYOE.ALWYS3
DYAMD	374156.98N / 1202415.94W	Y	FB	TF	261.92	78.85	AT/ABOVE FL270	AT 270K	
En Route Transition									
RUSME	372939.00N / 1173112.00W	Y		IF					RUSME.ALWYS3
DYAMD	374156.98N / 1202415.94W	Y	FB	TF	275.98	138.08	AT/ABOVE FL270	AT 270K	
Common Route									
DYAMD	374156.98N / 1202415.94W	Y		IF			AT/ABOVE FL270	AT 270K	DYAMD.ALWYS3
LAANE	373932.34N / 1204450.61W	Y	FB	TF	261.72	16.51	FL220BFL260	AT 260K	
ALWYS	373800.31N / 1205733.95W	Y	FB	TF	261.44	10.22			
Runway Transition									
ALWYS	373800.31N / 1205733.95W	Y		IF					
HEFLY	374057.80N / 1211329.62W	Y	FB	TF	283.23	12.99	14000BFL190	AT 250K	
ARRTU	374401.04N / 1213010.76W	Y	FB	TF	283.06	13.59	AT 10000	AT 240K	
ADDMM	374615.70N / 1214230.91W	Y	FB	TF	282.97	10.04	AT 9000	AT 240K	
COGGR	374908.33N / 1215834.12W	Y	FB	TF	282.81	13.04	7000B9000	AT 210K	
BERKS	375139.10N / 1221242.04W	Y	FO	TF	282.71	11.47	AT/ABOVE 5000	AT 210K	
KSFO:RWY 10L,RWY 10R,RWY 19L,RWY 19R				FM	282.71				

QUALITY
14
CHECKED