

FEDERAL AVIATION ADMINISTRATION
FLIGHT STANDARDS SERVICE
STANDARD TERMINAL ARRIVAL (STAR)

Bearings, headings, courses, tracks and radials are magnetic. Elevations and altitudes are in feet, MSL. Altitudes are minimum altitudes unless otherwise indicated.
Distances are in nautical miles (NM). Graphic depictions attached.

Arrival Name LZZRD (RNAV)	Number FOUR	STAR Computer Code LZZRD.LZZRD4	Superseded Number THREE	Dated 01/08/2015	Effective Date 2 DEC 21				
TRANSITION ROUTES:									
Transition Name	Transition Computer Codes	From FIX/NAVAID	To FIX/NAVAID	Course	Distance	MEA	MOCA	MAA	Crossing Altitudes / Fixes
BOBYY	BOBYY.LZZRD4	BOBYY	BOBYY						BETWEEN FL220 AND FL280
			HAKOR	267.28	16.43	13000	9700		
			LZZRD	266.96	20.64	13000	9700		BETWEEN 14000 AND FL180
FANGZ	FANGZ.LZZRD4	FANGZ	FANGZ						
			LOKKE	304.90	51.99	13000	10900		
			JETOS	304.50	17.59	13000	10900		BETWEEN FL260 AND FL300
			BOBYY	305.34	16.62	13000	10900		BETWEEN FL220 AND FL280
			HAKOR	267.28	16.43	13000	9700		
			LZZRD	266.96	20.64	13000	9700		BETWEEN 14000 AND FL180

ARRIVAL ROUTE DESCRIPTION:

FROM LZZRD ON TRACK 314.50/4.76 TO CROSS MKYON BETWEEN 13000 AND 15000.

LANDING RWY 3: FROM MKYON ON TRACK 318.63/4.01 TO CROSS HAPPEE BETWEEN 11000 AND 13000, THEN ON TRACK 327.69/11.70 TO CROSS COMRO AT 10000 AND AT 210 KIAS. EXPECT RNP, GPS, OR ILS RWY 3 APPROACH OR RADAR VECTORS TO FINAL APPROACH COURSE.

LANDING RWY 8: FROM MKYON ON TRACK 318.63/4.01 TO CROSS HAPPEE BETWEEN 11000 AND 13000, THEN ON TRACK 327.69/11.70 TO CROSS COMRO AT 10000 AND AT 210 KIAS. EXPECT RNP Z APPROACH OR RADAR VECTORS TO FINAL APPROACH COURSE FOR THE ILS/GPS RWY 8 APPROACHES.

LANDING RWY 21: FROM MKYON ON TRACK 002.76/9.90 TO SOPPA, THEN ON TRACK 002.24/8.26 TO CROSS PILLA AT 10000 AND AT 210 KIAS. EXPECT RNP Z RWY 21 APPROACH OR RADAR VECTORS TO FINAL APPROACH COURSE.

LANDING RWY 26: FROM MKYON ON TRACK 002.76/9.90 TO SOPPA, THEN ON TRACK 002.24/8.26 TO CROSS PILLA AT 10000 AND AT 210 KIAS. EXPECT RNP Z RWY 26 APPROACH OR RADAR VECTORS TO FINAL APPROACH COURSE.

PBN REQUIREMENT NOTES

RNAV 1 - DME/DME/IRU OR GPS

EQUIPMENT REQUIREMENT NOTES

RADAR REQUIRED

PROCEDURAL DATA NOTES:

NOTE: TURBOJET AIRCRAFT ONLY

NOTE: BOBYY TRANSITION "ATC ASSIGNED ONLY"

NOTE: LANDING RWYS 3, 8, EXPECT RADAR VECTORS TO FINAL APPROACH COURSE PRIOR TO COMRO.

NOTE: LANDING RWYS 21, 26, EXPECT RADAR VECTORS TO FINAL APPROACH COURSE PRIOR TO PILLA.

FIXES AND/OR HOLDING PATTERNS:

CHART HOLDING AT JETOS: HOLD SE, RT, 305.34 INBOUND, 10 NM LEGS.

CHART HOLDING AT LZZRD: HOLD E, RT, 266.96 INBOUND, 10 NM LEGS.



FEDERAL AVIATION ADMINISTRATION
FLIGHT STANDARDS SERVICE
STANDARD TERMINAL ARRIVAL (STAR)

Bearings, headings, courses, tracks and radials are magnetic. Elevations and altitudes are in feet, MSL. Altitudes are minimum altitudes unless otherwise indicated.
Distances are in nautical miles (NM). Graphic depictions attached.

Arrival Name	Number	STAR Computer Code	Superseded Number	Dated	Effective Date
LZZRD (RNAV)	FOUR	LZZRD.LZZRD4	THREE	01/08/2015	2 DEC 21

COMMUNICATIONS:

CHART: ALBUQUERQUE APP CON.

AIRPORTS SERVED:

ALBUQUERQUE INTL SUNPORT, ALBUQUERQUE, NM (KABQ)

LOST COMMUNICATIONS PROCEDURE:REMARKS:ADDITIONAL FLIGHT DATA:

DME/DME ASSESSMENT: SAT (RNP 2.0)

REFERENCE MAGNETIC VARIATION = KABQ 11E/1995

CHART AT PILLA TERMINUS: KABQ LDG RWY 21, RWY 26.

CHART AT COMRO TERMINUS: KABQ LDG RWY 3, RWY 8.

CAUTION: GLIDER ACTIVITY SUNRISE TO SUNSET; 30 TO 50 MILES EAST OF KABQ; 17500 FT MSL AND BELOW.

FLIGHT INSPECTED BY:

BRYAN VEIT
Name

FPO
Organization

09/16/2021
Date

Digitally signed by

JON DENTON

Sep 20, 2021

Signature

DEVELOPED BY:

JOHN CORMIER, DISTRICT SUPPORT MANAGER,
AIRSPACE, PROCEDURES, PLANNING AND
REQUIREMENTS
Name

ZAB ARTCC
Organization

08/05/2021
Date

Digitally signed by

JON DENTON

Sep 20, 2021

Signature

APPROVED BY:

LONNIE EVERHART
Name

AJV-A430
Organization

Date

Digitally signed by

JON DENTON

Sep 20, 2021

Signature

CHANGES:

1. FANGZ REPLACED CME, AND RENAMED FANGZ ENROUTE TRANSITION; MOVED HAKOR 0.2 NM WEST.
2. ADDED BOBYY ENROUTE TRANSITION.
3. ADDED NOTE: BOBYY TRANSITION "ATC ASSIGNED ONLY."
4. ADDED CROSSING ALT FOR BOBYY, FL 260-FL300.
5. UPDATED MEA'S AT LOKKE, JETOS, BOBYY FROM FL240 to 13000. BOBYY TO LZZRD 13000.
6. ADDED MOCA DATA.



FEDERAL AVIATION ADMINISTRATION
FLIGHT STANDARDS SERVICE
STANDARD TERMINAL ARRIVAL (STAR)

Bearings, headings, courses, tracks and radials are magnetic. Elevations and altitudes are in feet, MSL. Altitudes are minimum altitudes unless otherwise indicated.
Distances are in nautical miles (NM). Graphic depictions attached.

Arrival Name	Number	STAR Computer Code	Superseded Number	Dated	Effective Date
LZZRD (RNAV)	FOUR	LZZRD.LZZRD4	THREE	01/08/2015	2 DEC 21

7. REMOVED MEA'S FROM ARRIVAL ROUTE.
8. UPDATED ARRIVAL TEXT RWY 3, 8, 21, 26 EXPECT APPROACH WORDING TO INCLUDE AVAILABLE IAPS.
9. REMOVED NOTE: CROSS JETOS AT 280 KIAS. CROSS LZZRD AT 250 KIAS.
10. UPDATED PROCEDURE DATA NOTES: REMOVED EXPECT APPROACH AND COMBINED RWYS 3, 8.

REASONS:

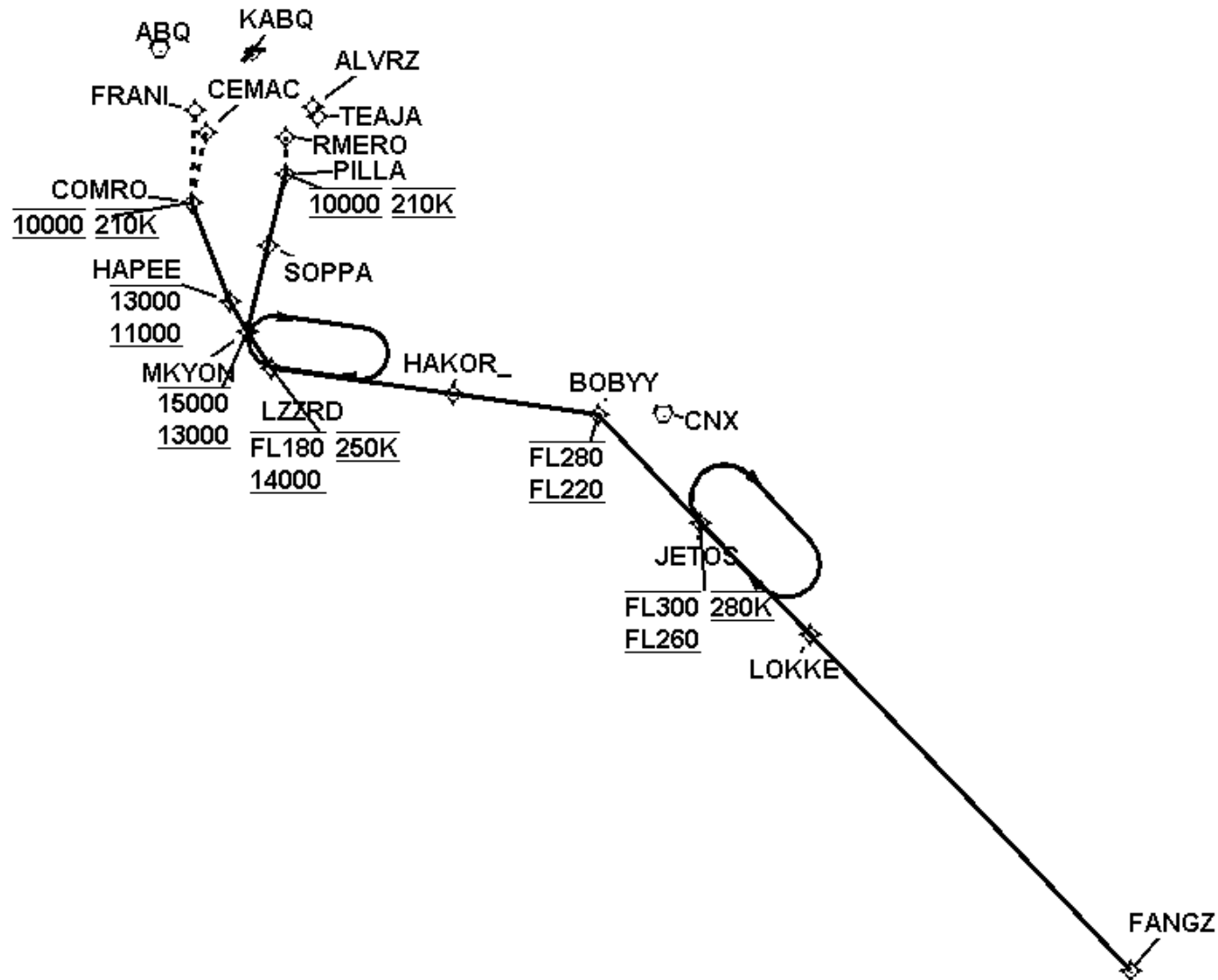
1. ZAB REQUESTED TO REMOVE CME OFF OF STAR AND REPLACE WITH WAYPOINT.
2. ZAB REQUESTED TO ADD ADDITIONAL ENROUTE TRANSITION TO STAR.
3. ZAB REQUESTED TRANSITION TO BE ASSIGNED BY ATC AS NEEDED.
4. ZAB REQUESTED ALTITUDE RESTRICTION TO PUSH AIRCRAFT DOWN FOR ARRIVALS
5. DME/DME/IRU COVERAGE.
6. MOCA REQUIRED.
7. NO LONGER DOCUMENTED.
8. UPDATED TO REFLECT TERMINUS FIXES AND AVAILABLE IAPS / CONFORM TO CRITERIA.
9. ONLY DOCUMENTED ON 17.2 FORM.
10. EXPECT APPROACHES LISTED PREVIOUSLY IN ARRIVAL TEXT.



FEDERAL AVIATION ADMINISTRATION
FLIGHT STANDARDS SERVICE
STANDARD TERMINAL ARRIVAL (STAR)

Bearings, headings, courses, tracks and radials are magnetic. Elevations and altitudes are in feet, MSL. Altitudes are minimum altitudes unless otherwise indicated.
Distances are in nautical miles (NM). Graphic depictions attached.

Arrival Name	Number	STAR Computer Code	Superseded Number	Dated	Effective Date
LZZRD (RNAV)	FOUR	LZZRD.LZZRD4	THREE	01/08/2015	2 DEC 21
Graphic Depiction 1					



FEDERAL AVIATION ADMINISTRATION
FLIGHT STANDARDS SERVICE
STAR (DATA RECORD)

Arrival Name	Number	STAR Computer Code	Superseded Number	Dated	Effective Date
LZZRD (RNAV)	FOUR	LZZRD.LZZRD4	THREE	01/08/2015	2 DEC 21

FIX/NAVAID	LAT/LONG	C	FO/FB	LEG TYPE	TC	DIST (NM)	ALTITUDE	SPEED	REMARKS
En Route Transition									
BOBYY	342207.06N / 1054929.58W	Y		IF			FL220BFL280		BOBYY.LZZRD4
HAKOR	342427.71N / 1060908.60W	Y	FB	TF	278.28	16.43			
LZZRD	342717.05N / 1063352.07W	Y	FB	TF	277.96	20.64	14000BFL180	AT 250K	
En Route Transition									
FANGZ	332015.35N / 1043716.98W	Y		IF					FANGZ.LZZRD4
LOKKE	335732.07N / 1052046.66W	Y	FB	TF	315.90	51.99			
JETOS	341005.21N / 1053538.10W	Y	FB	TF	315.50	17.59	FL260BFL300	AT 280K	
BOBYY	342207.06N / 1054929.58W	Y	FB	TF	316.34	16.62	FL220BFL280		
HAKOR	342427.71N / 1060908.60W	Y	FB	TF	278.28	16.43			
LZZRD	342717.05N / 1063352.07W	Y	FB	TF	277.96	20.64	14000BFL180	AT 250K	
Common Route									
LZZRD	342717.05N / 1063352.07W	Y		IF			14000BFL180	AT 250K	LZZRD.LZZRD4
MKYON	343112.61N / 1063707.68W	Y	FB	TF	325.50	04.76	13000B15000		
Runway Transition									
MKYON	343112.61N / 1063707.68W	Y		IF			13000B15000		
HAPEE	343440.69N / 1063935.09W	Y	FB	TF	329.63	04.01	11000B13000		
COMRO	344535.52N / 1064444.58W	Y	FB	TF	338.69	11.70	AT 10000	AT 210K	
KABQ:RWY 3									
Runway Transition									
MKYON	343112.61N / 1063707.68W	Y		IF			13000B15000		
HAPEE	343440.69N / 1063935.09W	Y	FB	TF	329.63	04.01	11000B13000		
COMRO	344535.52N / 1064444.58W	Y	FB	TF	338.69	11.70	AT 10000	AT 210K	
KABQ:RWY 8									

FEDERAL AVIATION ADMINISTRATION
FLIGHT STANDARDS SERVICE
STAR (DATA RECORD)

Arrival Name LZZRD (RNAV)	Number FOUR	STAR Computer Code LZZRD.LZZRD4		Superseded Number THREE		Dated 01/08/2015	Effective Date 2 DEC 21		
FIX/NAVAID	LAT/LONG	C	FO/FB	LEG TYPE	TC	DIST (NM)	ALTITUDE	SPEED	REMARKS
Runway Transition									
MKYON	343112.61N / 1063707.68W	Y		IF			13000B15000		
SOPPA	344050.48N / 1063416.42W	Y	FB	TF	013.76	09.90			
PILLA	344853.57N / 1063158.59W	Y	FB	TF	013.24	08.26	AT 10000	AT 210K	
KABQ:RWY 21									
Runway Transition									
MKYON	343112.61N / 1063707.68W	Y		IF			13000B15000		
SOPPA	344050.48N / 1063416.42W	Y	FB	TF	013.76	09.90			
PILLA	344853.57N / 1063158.59W	Y	FB	TF	013.24	08.26	AT 10000	AT 210K	
KABQ:RWY 26									