

FEDERAL AVIATION ADMINISTRATION
FLIGHT STANDARDS SERVICE
STANDARD TERMINAL ARRIVAL (STAR)

Bearings, headings, courses, tracks and radials are magnetic. Elevations and altitudes are in feet, MSL. Altitudes are minimum altitudes unless otherwise indicated.
Ceilings are in feet above airport elevation. Distances are in nautical miles. Visibilities are in statute miles or feet RVR unless otherwise indicated.

Arrival Name	Number	STAR Computer Code	Superseded Number	Dated	Effective Date
BANKR (RNAV)	THREE	BANKR.BANKR3	TWO	08/17/2017	20 Apr 2023

TRANSITION ROUTES:

Transition Name	Transition Computer Codes	From FIX/NAVAID	To FIX/NAVAID	Course	Distance	MEA	MOCA	MAA	Crossing Altitudes / Fixes
PONZE	PONZE.BANKR3	PONZE	PONZE						AT/ABOVE FL270
			NTRST	027.47	10.59	11000	2000		AT/ABOVE FL240
			CHKNG	028.58	06.03	11000	2000		
			CRDET	038.03	18.54	11000	2000		AT/ABOVE 17000
			BANKR	038.14	12.68	11000	2000		BETWEEN 13000 AND FL220

ARRIVAL ROUTE DESCRIPTION:

KCLT: FROM BANKR ON TRACK 040.38/7.88 TO CROSS DEBBT BETWEEN 12000 AND FL210 AND AT 250 KIAS.

LANDING KCLT RWY 18L/C/R: FROM DEBBT ON TRACK 040.30/14.66 TO CROSS ROBRR BETWEEN 12000 AND 16000, THEN ON TRACK 050.12/6.38 TO CROSS FOBAR BETWEEN 12000 AND 14000, THEN ON TRACK 050.17/4.50 TO CROSS DEELX AT 12000 AND AT 250 KIAS, THEN ON TRACK 050.20/5.00 TO STKUP, THEN ON TRACK 002.85/6.77 TO DOSBE, THEN ON TRACK 002.82/2.31 TO AAIRE, THEN ON TRACK 002.83/12.00 TO JRDEN, THEN ON TRACK 002.83. EXPECT RADAR VECTORS TO FINAL APPROACH COURSE.

LANDING KCLT RWY 36L/C/R: FROM DEBBT ON TRACK 069.97/3.03 TO CROSS CONTR AT OR ABOVE 11000, THEN ON TRACK 070.33/3.22 TO CROSS OPALS BETWEEN 10000 AND 12000, THEN ON TRACK 070.34/10.02 TO CROSS BLNCE AT 9000 AND AT 210 KIAS, THEN ON HEADING 090.00 OR AS ASSIGNED BY ATC. EXPECT RADAR VECTORS TO FINAL APPROACH COURSE.

LANDING KJQF: FROM BANKR ON TRACK 039.87/24.37 TO CROSS WHDRW AT OR ABOVE 4000, THEN ON TRACK 050.00. EXPECT RADAR VECTORS TO FINAL APPROACH COURSE.

PBN REQUIREMENT NOTES:

RNAV 1 - DME/DME/IRU OR GPS

EQUIPMENT REQUIREMENT NOTES:

RADAR REQUIRED

PROCEDURAL DATA NOTES:

NOTE: JET AIRCRAFT ONLY

NOTE: LANDING SOUTH USE RWY 18L/C/R TRANSITION, LANDING NORTH USE RWY 36L/C/R TRANSITION. EXPECT RUNWAY ASSIGNMENT FROM CLT APPROACH.

NOTE: JET AIRCRAFT DESCEND VIA MACH NUMBER UNTIL 280 KIAS, IF UNABLE, ADVISE ATC.

FIXES AND/OR HOLDING PATTERNS:

CHART HOLDING AT HRTWL: HOLD SW, RT, 066.62 INBOUND, 10 NM LEGS.

CHART HOLDING AT CRLNA: HOLD S, RT, 011.00 INBOUND, 10 NM LEGS.

COMMUNICATIONS:

CHART: CHARLOTTE APPROACH CONTROL

AIRPORTS SERVED:

AIRPORT ID	CITY	STATE
KCLT	CHARLOTTE	NC
KJQF	CONCORD	NC

LOST COMMUNICATIONS PREFERENCES:



FEDERAL AVIATION ADMINISTRATION
FLIGHT STANDARDS SERVICE
STANDARD TERMINAL ARRIVAL (STAR)

Bearings, headings, courses, tracks and radials are magnetic. Elevations and altitudes are in feet, MSL. Altitudes are minimum altitudes unless otherwise indicated.
Ceilings are in feet above airport elevation. Distances are in nautical miles. Visibilities are in statute miles or feet RVR unless otherwise indicated.

Arrival Name	Number	STAR Computer Code	Superseded Number	Dated	Effective Date
BANKR (RNAV)	THREE	BANKR.BANKR3	TWO	08/17/2017	20 Apr 2023

REMARKS:

THE ENVIRONMENTAL REVIEW UNDER ORDER 1050.1 (LATEST EDITION) AND THE NOISE SCREENING HAVE BEEN ACCOMPLISHED.

RETAINED CURRENT PROCEDURE MEAs OF 11000 MSL PER ATC DESIGN APPROVAL. THREE DME EXTENDED SERVICE VOLUMES(ESV) WERE USED JUST TO MAINTAIN THE CURRENT MEA ALTITUDES AND PROVIDE FOR RELIABLE DME RESOLUTION. LOWERING THE MEAs WOULD RESULT IN MORE ESVs, THEREBY ADDING ADDITIONAL CONSTRAINTS ON DME RESOLUTION FOR DME/DME/IRU AIRCRAFT.

ADDITIONAL FLIGHT DATA:

DME/DME ASSESSMENT: SAT (RNP 2.0)

MAG VAR = KCLT 07W/2000

CHART: KDCM (CHESTER-CATAWBA REGIONAL AIRPORT)

CHART AT JRDN TERMINUS: KCLT LDG RWY 18L/C/R

CHART AT BLNCE TERMINUS: KCLT LDG RWY 36L/C/R

CHART AT WHDRW TERMINUS: LANDING KJQF

CHART NOTE: USE CAUTION: PARACHUTE JUMPING 16NM NORTHEAST DEBBT, 3 NM RADIUS KDCM (CHESTER-CATAWBA RGNL AIRPORT) AOB 14,500 MSL.

FLIGHT INSPECTED BY:

Digitally signed by

ERIC N SUSKI

ORGANIZATION:**DATE:**

CRAIG LARSON

Feb 06, 2023

FPO

01/31/2023

Flight Inspected Signature: _____

DEVELOPED BY:

Digitally signed by

CASIMIR L TABAKA

AJV-A431

09/22/2022

ERIC N. SUSKI (ANDRE TUCKER)

Jan 23, 2023

Developed By Signature: _____

APPROVED BY:

Digitally signed by

CASIMIR L TABAKA

AJV-A430

JOHNNIE BAKER, MANAGER

Jan 23, 2023

Approved By Signature: _____

CHANGES:

1. DELETED: GRD stand-alone holding pattern and replaced with HRTWL stand-alone holding pattern.
2. DELETED: KUPPP and JONZE stand-alone holding patterns and BANKR holding pattern.
3. Replaced CLT holding pattern with new CRLNA holding pattern.
4. DELETED: LOST COMM PROCEDURES.
5. DELETED: CHART NOTES TO RWYs 5 & 23 PER ATC REQUEST.
6. ADDED: Speed restriction 280 KIAS at PONZE.
7. REPLACED CHART NOTE: "Descend via MACH number until intercepting 270K. Maintain 270K until slowed by the STAR or assigned by ATC" with new "NOTE: JET AIRCRAFT DESCEND VIA MACH NUMBER UNTIL 280 KIAS, IF UNABLE, ADVISE ATC."
8. REPLACED: CHART NOTES "EXPECT DESCEND VIA CLEARANCE AND LANDING DIRECTION ASSIGNMENT (NORTH OR SOUTH) BY ARTCC. FOR VERTICAL PLANNING, LANDING SOUTH, SELECT RWY 18R, LANDING NORTH, SELECT RWY 36L" and "CLT APPROACH WILL ASSIGN LANDING RUNWAY" with new "NOTE: LANDING SOUTH USE RWY 18L/C/R TRANSITION, LANDING NORTH USE RWY 36 L/C/R TRANSITION. EXPECT RUNWAY ASSIGNMENT FROM CLT APPROACH."
9. DELETED: KCLT RWY 5 and RWY 23 Transitions.
10. ADDED: KJQF TO AIRPORTS SERVED.
11. DELETED: CHART NOTE "USE CAUTION: PARACHUTE JUMPING 16 NM NORTHEAST DEBBT, 3 NM RADIUS KDCM (CHESTER-CATAWBA RGNL AIRPORT), AT OR BELOW 14,500 MSL.
12. ADDED: NOTE: "CHART AT WHDRW TERMINUS: LANDING KJQF", "CHART AT JRDN TERMINUS: KCLT LDG RWY 18L/C/R", AND "CHART AT BLNCE TERMINUS: KCLT LDG RWY 36L/C/R".

FEDERAL AVIATION ADMINISTRATION
FLIGHT STANDARDS SERVICE
STANDARD TERMINAL ARRIVAL (STAR)

Bearings, headings, courses, tracks and radials are magnetic. Elevations and altitudes are in feet, MSL. Altitudes are minimum altitudes unless otherwise indicated.
Ceilings are in feet above airport elevation. Distances are in nautical miles. Visibilities are in statute miles or feet RVR unless otherwise indicated.

Arrival Name	Number	STAR Computer Code	Superseded Number	Dated	Effective Date
BANKR (RNAV)	THREE	BANKR.BANKR3	TWO	08/17/2017	20 Apr 2023

- 13. CHANGED "TURBOJET" TO "JET" IN PROCEDURAL DATA NOTES.
- 14. MOVED "NOTE: RADAR REQUIRED" TO EQUIPMENT REQUIREMENT NOTES
- 15. MOVED "RNAV 1 - DME/DME/IRU OR GPS" TO PBN REQUIREMENT NOTES
- 16. REMOVED: AIRPORT NAMES FROM AIRPORTS SERVED.

REASONS:

- 1. GRD is scheduled for decommissioning as part of ZTL VOR MON.
- 2. ATC request.
- 3-4. ATC request and CLT VOR is scheduled for decommissioning per ZTL VOR MON.
- 5. RWYs 5 & 23 are scheduled for decommissioning.
- 6. ATC request for criteria requirements.
- 7-8. CHARTING CONSISTENCY AND REDUCED CHART CLUTTER.
- 9. RWYs 5 and 23 scheduled for decommissioning.
- 10. ATC request and PER 8260.19I 4-5-12(g)
- 11. CHARTING REQUIREMENTS.
- 12. PER 8260.19I 4-5-12(j)
- 13. PER 8260.19I 4-5-12(d)(4)
- 14-15. PER 8260.19I 4-5-3
- 16. PER 82690.19I 4-5-12(g)

1/23/2023: THIS IS AN UPDATED COPY OF THE FORM DEVELOPED ON 09/22/2022.

ADDED TO ADDITIONAL FLIGHT DATA: CHART NOTE: USE CAUTION:, PARACHUTE JUMPING 16NM NORTHEAST DEBBT, 3 NM RADIUS KDCM (CHESTER-CATAWBA RGNL AIRPORT) AOB 14,500 MSL.

2/24/2023: THIS IS A CORRECTED COPY OF THE FORM APPROVED ON 01/23/2023.

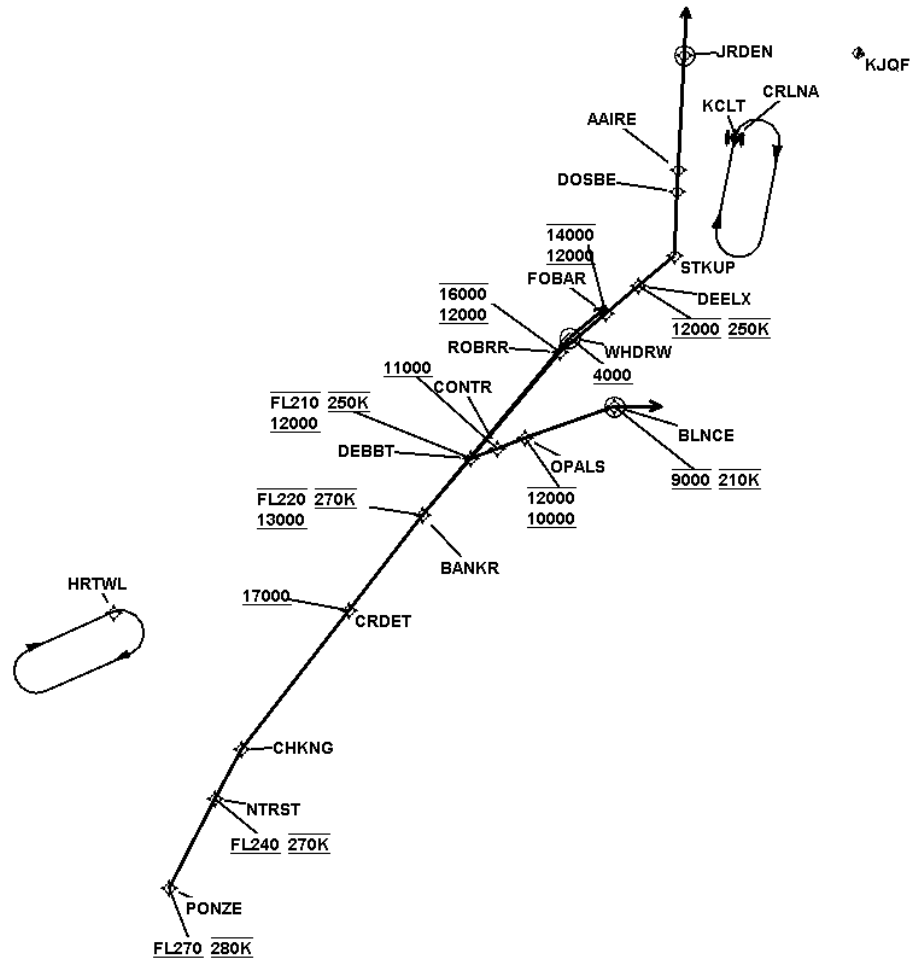
- 1. 8260-17.2: RWY TRANSITION, KCLT: RWY 36C, RWY 36L, RWY 36R CHANGED LEG TYPE FROM FM TO VM.



FEDERAL AVIATION ADMINISTRATION
FLIGHT STANDARDS SERVICE
STANDARD TERMINAL ARRIVAL (STAR)

Bearings, headings, courses, tracks and radials are magnetic. Elevations and altitudes are in feet, MSL. Altitudes are minimum altitudes unless otherwise indicated.
Ceilings are in feet above airport elevation. Distances are in nautical miles. Visibilities are in statute miles or feet RVR unless otherwise indicated.

Arrival Name	Number	STAR Computer Code	Superseded Number	Dated	Effective Date
BANKR (RNAV)	THREE	BANKR.BANKR3	TWO	08/17/2017	20 Apr 2023
Graphic Depiction 1					



PO
Q

QUALITY
35
CHECKED

**FEDERAL AVIATION ADMINISTRATION
FLIGHT STANDARDS SERVICE
STAR (DATA RECORD)**

Arrival Name BANKR (RNAV)	Number THREE	STAR Computer Code BANKR.BANKR3		Superseded Number TWO		Dated 08/17/2017	Effective Date 20 Apr 2023		
FIX/NAVAID	LAT/LONG	C	FO/FB	LEG TYPE	TC	DIST (NM)	ALTITUDE	SPEED	REMARKS
En Route Transition									
PONZE	334654.76N / 0815745.93W	Y		IF			AT/ABOVE FL270	AT 280K	PONZE.BANKR3
NTRST	335651.21N / 0815318.78W	Y	FB	TF	020.47	10.59	AT/ABOVE FL240	AT 270K	
CHKNG	340228.02N / 0815038.74W	Y	FB	TF	021.58	06.03			
CRDET	341822.51N / 0813906.45W	Y	FB	TF	031.03	18.54	AT/ABOVE 17000		
BANKR	342914.56N / 0813110.42W	Y	FB	TF	031.14	12.68	13000BFL220	AT 270K	
Common Route									
BANKR	342914.56N / 0813110.42W	Y		IF			13000BFL220	AT 270K	BANKR.BANKR3
DEBBT	343550.16N / 0812555.16W	Y	FB	TF	033.38	07.88	12000BFL210	AT 250K	
Common Route									
BANKR	342914.56N / 0813110.42W	Y		IF			13000BFL220	AT 270K	BANKR.BANKR3
WHDRW	344943.82N / 0811506.33W	Y	FO	TF	032.87	24.37	AT/ABOVE 4000		
KJQF				FM	043.00				
Runway Transition									
DEBBT	343550.16N / 0812555.16W	Y		IF			12000BFL210	AT 250K	
ROBRR	344806.11N / 0811608.77W	Y	FB	TF	033.30	14.66	12000B16000		
FOBAR	345245.93N / 0811050.64W	Y	FB	TF	043.12	06.38	12000B14000		
DEELX	345603.12N / 0810705.98W	Y	FB	TF	043.17	04.50	AT 12000	AT 250K	
STKUP	345942.02N / 0810256.12W	Y	FB	TF	043.20	05.00			
DOSBE	350628.09N / 0810332.01W	Y	FB	TF	355.85	06.77			
AAIRE	350846.57N / 0810344.33W	Y	FB	TF	355.82	02.31			
JRDEN	352045.79N / 0810448.30W	Y	FO	TF	355.83	12.00			
KCLT: RWY 18C, RWY 18L, RWY 18R				FM	355.83				
Runway Transition									
DEBBT	343550.16N / 0812555.16W	Y		IF			12000BFL210	AT 250K	
CONTR	343713.00N / 0812238.63W	Y	FB	TF	062.97	03.03	AT/ABOVE 11000		

QUALITY
35
CHECKED

FEDERAL AVIATION ADMINISTRATION
FLIGHT STANDARDS SERVICE
STAR (DATA RECORD)

Arrival Name BANKR (RNAV)	Number THREE	STAR Computer Code BANKR.BANKR3		Superseded Number TWO		Dated 08/17/2017	Effective Date 20 Apr 2023		
<u>FIX/NAVAID</u>	<u>LAT/LONG</u>	<u>C</u>	<u>FO/FB</u>	<u>LEG TYPE</u>	<u>TC</u>	<u>DIST (NM)</u>	<u>ALTITUDE</u>	<u>SPEED</u>	<u>REMARKS</u>
OPALS	343839.88N / 0811909.23W	Y	FB	TF	063.33	03.22	10000B12000		
BLNCE	344309.50N / 0810817.57W	Y	FO	TF	063.34	10.02	AT 9000	AT 210K	
KCLT: RWY 36C, RWY 36L, RWY 36R				VM	083.00				

