

FEDERAL AVIATION ADMINISTRATION  
FLIGHT STANDARDS SERVICE  
STANDARD TERMINAL ARRIVAL (STAR)

Bearings, headings, courses, tracks and radials are magnetic. Elevations and altitudes are in feet, MSL. Altitudes are minimum altitudes unless otherwise indicated.  
Distances are in nautical miles (NM). Graphic depictions attached.

Arrival Name	Number	STAR Computer Code	Superseded Number	Dated	Effective Date
JAFAR (RNAV)	THREE	JAFAR.JAFAR3	TWO	12/02/2021	19 May 2022

TRANSITION ROUTES:

Transition Name	Transition Computer Codes	From FIX/NAVAID	To FIX/NAVAID	Course	Distance	MEA	MOCA	MAA	Crossing Altitudes / Fixes
BITTE	BITTE.JAFAR3	BITTE	BITTE						
			BRKWL	123.87	56.75	6000	2100		
			JAFAR	163.32	19.75	1800	1800		
BRKWL	BRKWL.JAFAR3	BRKWL	BRKWL						
			JAFAR	163.32	19.75	1800	1800		
MJKAL	MJKAL.JAFAR3	MJKAL	MJKAL						
			HUNKR	144.27	53.99	6000	1800		
			DOWNO	172.44	21.00	6000	1800		
			BRKWL	173.84	29.72	6000	1800		
			JAFAR	163.32	19.75	1800	1800		

ARRIVAL ROUTE DESCRIPTION:

KMCO: FROM JAFAR ON TRACK 140.30/9.13 TO CRPIT, THEN ON TRACK 129.36/9.97 TO LAMMP.

LANDING KMCO RWY 17L/R, 18L/R: FROM LAMMP ON TRACK 106.04/17.48 TO CROSS YAGGO AT 6000 AND AT 210 KIAS, THEN ON TRACK 106.04. EXPECT RADAR VECTORS TO FINAL APPROACH COURSE.

LANDING KMCO RWY 35L/R, 36L/R: FROM LAMMP ON TRACK 129.69/8.04 TO CROSS WISHH BETWEEN 10000 AND 12000 AND AT 250 KIAS, THEN ON TRACK 126.31/12.87 TO HARAM, THEN ON TRACK 180.63/2.06 TO CROSS DORII AT OR ABOVE 8000 AND AT 220 KIAS, THEN ON TRACK 186.00/13.35 TO CROSS BRICE AT 5000 AND AT 210 KIAS, THEN ON TRACK 186.00. EXPECT RADAR VECTORS TO FINAL APPROACH COURSE.

LANDING KISM/KORL: FROM JAFAR ON TRACK 140.05/9.24 TO RINGG, THEN ON TRACK 144.38/5.96 TO CROSS FLIPY AT 11000 AND AT 250 KIAS, THEN ON TRACK 144.38. EXPECT RADAR VECTORS TO FINAL APPROACH COURSE.

PBN REQUIREMENT NOTES

RNAV 1 - DME/DME/IRU OR GPS

EQUIPMENT REQUIREMENT NOTES

RADAR REQUIRED

PROCEDURAL DATA NOTES:

NOTE: ATC ASSIGNED ONLY FOR KMCO.

NOTE: BITTE and BRKWL Transitions, ATC Assigned only.

NOTE: JET AIRCRAFT ONLY.



FEDERAL AVIATION ADMINISTRATION  
FLIGHT STANDARDS SERVICE  
STANDARD TERMINAL ARRIVAL (STAR)

Bearings, headings, courses, tracks and radials are magnetic. Elevations and altitudes are in feet, MSL. Altitudes are minimum altitudes unless otherwise indicated.  
Distances are in nautical miles (NM). Graphic depictions attached.

Arrival Name	Number	STAR Computer Code	Superseded Number	Dated	Effective Date
JAFAR (RNAV)	THREE	JAFAR.JAFAR3	TWO	12/02/2021	19 May 2022

FIXES AND/OR HOLDING PATTERNS:

CHART HOLDING AT BRKWL: HOLD N, LT, 173.49 INBOUND, 10 NM LEGS.  
CHART HOLDING AT HUNKR: HOLD N, RT, 158.74 INBOUND, 10 NM LEGS.  
CHART HOLDING AT JAFAR: HOLD N, LT, 165.58 INBOUND, 10 NM LEGS.  
CHART HOLDING AT BITTE: HOLD NW, RT, 123.86 INBOUND, 10 NM LEGS.  
CHART HAMMY, AMEBE.

COMMUNICATIONS:

CHART: ORLANDO APP CON

AIRPORTS SERVED:

ORLANDO INTL, ORLANDO, FL (KMCO)  
EXECUTIVE, ORLANDO, FL (KORL)  
KISSIMMEE GATEWAY, ORLANDO, FL (KISM)

LOST COMMUNICATIONS PROCEDURE:

KMCO LANDING NORTH: Continue track to BRICE, then proceed direct AMEBE, intercept Rwy 36L final approach course, conduct approach.  
KMCO LANDING SOUTH: Continue track to YAGGO, then proceed direct to HAMMY, intercept Rwy 18R final approach course, conduct approach.

REMARKS:

ENVIRONMENTAL REVIEW UNDER ORDER 1050.1 (LATEST EDITION) AND THE NOISE SCREENING HAVE BEEN ACCOMPLISHED.

ADDITIONAL FLIGHT DATA:

DME/DME ASSESSMENT: SAT (RNP 2.0)  
REFERENCE MAGNETIC VARIATION = KMCO 06W/2015  
CHART AT FLIPY TERMINUS: LDG KISM/KORL  
CHART AT YAGGO TERMINUS: KMCO RWY 17L/R, 18L/R  
CHART AT BRICE TERMINUS: KMCO RWY 35L/R, 36L/R



FEDERAL AVIATION ADMINISTRATION  
FLIGHT STANDARDS SERVICE  
STANDARD TERMINAL ARRIVAL (STAR)

Bearings, headings, courses, tracks and radials are magnetic. Elevations and altitudes are in feet, MSL. Altitudes are minimum altitudes unless otherwise indicated.  
Distances are in nautical miles (NM). Graphic depictions attached.

Arrival Name	Number	STAR Computer Code	Superseded Number	Dated	Effective Date
<b>JAFAR (RNAV)</b>	<b>THREE</b>	<b>JAFAR.JAFAR3</b>	<b>TWO</b>	<b>12/02/2021</b>	<b>19 May 2022</b>
<u>FLIGHT INSPECTED BY:</u>				<i>Digitally signed by</i> <b>ALLAN WILL</b> Mar 18, 2022	
				Signature	
<u>DEVELOPED BY:</u>				<i>Digitally signed by</i> <b>ALLAN WILL</b> Mar 18, 2022	
				Signature	
<u>APPROVED BY:</u>				<i>Digitally signed by</i> <b>ALLAN WILL</b> Mar 18, 2022	
				Signature	

CHANGES:

1. DELETED: CROSSING ALTITUDES FOR BITTE AND BRKWL TRANSITIONS.
2. ADDED: MJKAL TRANSITION
3. DELETED: COEDY TRANSITION
4. DELETED: ILEXX TRANSITION AND ASSOCIATED HOLDING DATA
5. DELETED: BUULL TRANSITION AND ASSOCIATED HOLDING DATA
6. CHANGED JAFAR HOLDING FROM 163.17 TO 165.58
7. MOVED BRKWL .02NM WEST
8. CHANGED INBOUND HOLD CRS AT BRKWL FROM 173.81 TO 173.49
9. ADDED ALTITUDE/SPEED RESTRICTION 11000 AND 250 KIAS AT FLIPY
10. DELETED: ILEXX AND DNELE HOLDING PATTERNS
11. ADDED: ATC ASSIGNED ONLY FOR KMCO
12. DELETE: NOTE: Expect "descend via" clearance and landing direction (north or south) by ARTCC. For vertical navigation planning, landing south, select Rwy 18R, landing north, select Rwy 36L
13. DELETE: NOTE: MCO Landing North, Expect RADAR Vectors prior to BRICE
14. DELETE: NOTE: MCO Landing South, Expect RADAR Vectors prior to YAGGO
15. DELETE: NOTE: Landing ISM and ORL, Expect RADAR Vectors at FLIPY
16. DELETED the word "REQUIRED" from DME/DME/IRU or GPS REQUIRED.
17. Lowered all MEAs to 6000.
18. REMOVED ALTITUDE RESTRICTIONS AT CRPIT AND JAFAR IN COMMON ROUTE.

REASONS:

- 1-5. ATC REQUEST, PROVIDES MORE EFFICIENCY AND CONSISTENT TRAFFIC FLOW
6. ATC REQUEST
7. MITIGATE LEG LENGTH FAILURE
8. BRKWL MOVED .02NM WEST

QUALITY  
14  
CHECKED

FEDERAL AVIATION ADMINISTRATION  
FLIGHT STANDARDS SERVICE  
STANDARD TERMINAL ARRIVAL (STAR)

Bearings, headings, courses, tracks and radials are magnetic. Elevations and altitudes are in feet, MSL. Altitudes are minimum altitudes unless otherwise indicated.  
Distances are in nautical miles (NM). Graphic depictions attached.

Arrival Name	Number	STAR Computer Code	Superseded Number	Dated	Effective Date
JAFAR (RNAV)	THREE	JAFAR.JAFAR3	TWO	12/02/2021	19 May 2022

9. ATC REQUEST, AIRSPACE CONSTRAINTS

10. NO LONGER ON PROCEDURE

11. ATC REQUEST, PRIMARILY USED FOR SATELLITE AIRPORTS

12-15. All "EXPECT NOTES" removed for clarification and reduce possible confusion

16. CURRENT DOCUMENTATION STANDARDS IAW 8260.19I

17. lowest published altitude between fixes.

18. ATC REQUEST, PROVIDES MORE EFFICIENCY AND CONSISTENT TRAFFIC FLOW

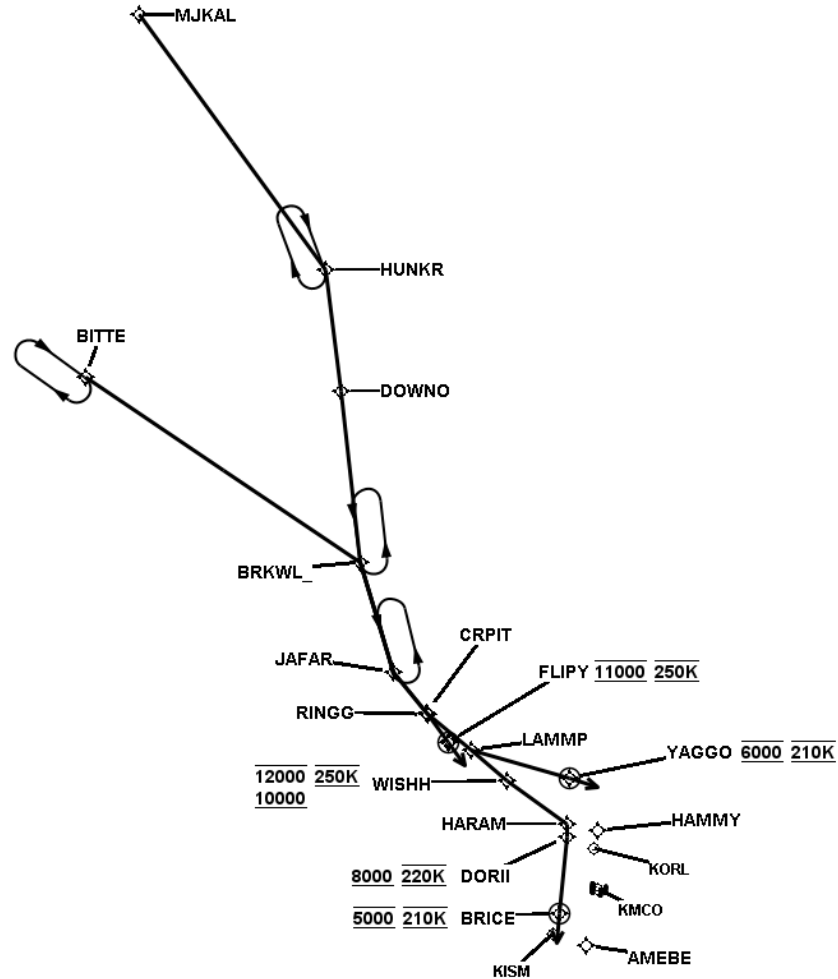
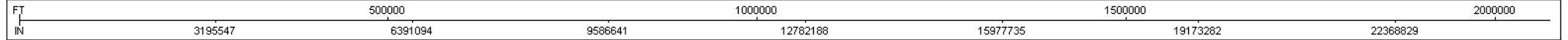
QUALITY  
14  
CHECKED

FEDERAL AVIATION ADMINISTRATION  
FLIGHT STANDARDS SERVICE  
STANDARD TERMINAL ARRIVAL (STAR)

Bearings, headings, courses, tracks and radials are magnetic. Elevations and altitudes are in feet, MSL. Altitudes are minimum altitudes unless otherwise indicated.  
Distances are in nautical miles (NM). Graphic depictions attached.

Arrival Name	Number	STAR Computer Code	Superseded Number	Dated	Effective Date
JAFAR (RNAV)	THREE	JAFAR.JAFAR3	TWO	12/02/2021	19 May 2022

Graphic Depiction 1

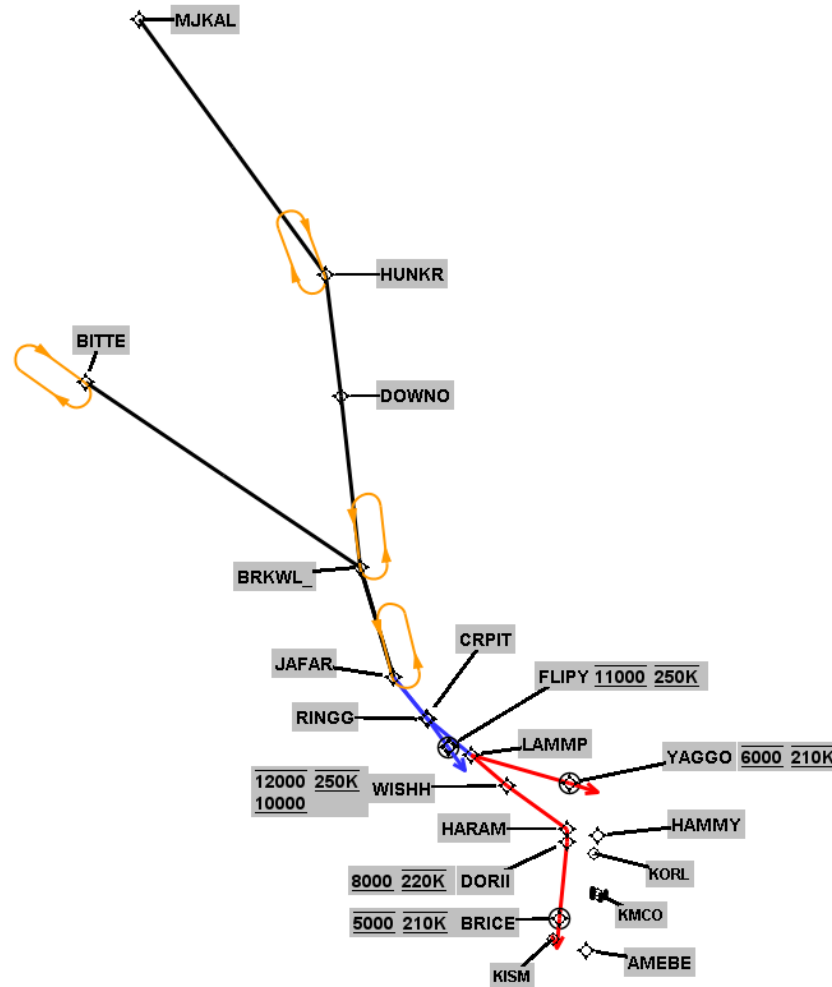


FEDERAL AVIATION ADMINISTRATION  
FLIGHT STANDARDS SERVICE  
STANDARD TERMINAL ARRIVAL (STAR)

Bearings, headings, courses, tracks and radials are magnetic. Elevations and altitudes are in feet, MSL. Altitudes are minimum altitudes unless otherwise indicated.  
Distances are in nautical miles (NM). Graphic depictions attached.

Arrival Name	Number	STAR Computer Code	Superseded Number	Dated	Effective Date
JAFAR (RNAV)	THREE	JAFAR.JAFAR3	TWO	12/02/2021	19 May 2022

Graphic Depiction 2

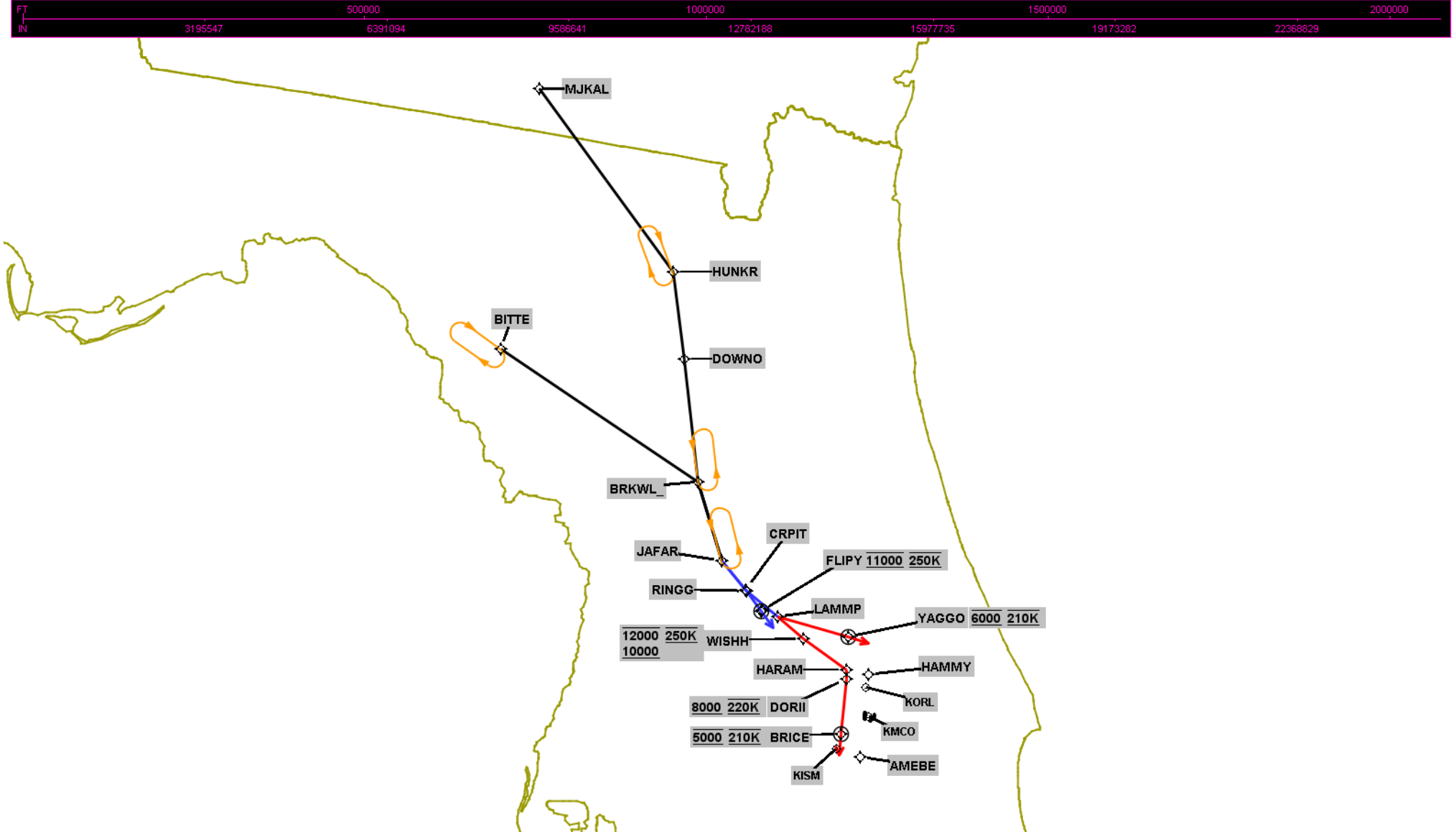


FEDERAL AVIATION ADMINISTRATION  
FLIGHT STANDARDS SERVICE  
STANDARD TERMINAL ARRIVAL (STAR)

Bearings, headings, courses, tracks and radials are magnetic. Elevations and altitudes are in feet, MSL. Altitudes are minimum altitudes unless otherwise indicated.  
Distances are in nautical miles (NM). Graphic depictions attached.

Arrival Name	Number	STAR Computer Code	Superseded Number	Dated	Effective Date
JAFAR (RNAV)	THREE	JAFAR.JAFAR3	TWO	12/02/2021	19 May 2022

Graphic Depiction 3



FEDERAL AVIATION ADMINISTRATION  
FLIGHT STANDARDS SERVICE  
STAR (DATA RECORD)

Arrival Name	Number	STAR Computer Code	Superseded Number	Dated	Effective Date
JAFAR (RNAV)	THREE	JAFAR.JAFAR3	TWO	12/02/2021	19 May 2022

FIX/NAVAID	LAT/LONG	C	FO/FB	LEG TYPE	TC	DIST (NM)	ALTITUDE	SPEED	REMARKS
En Route Transition									
BITTE	294417.63N / 0830852.72W	Y		IF					BITTE.JAFAR3
BRKWL	291729.48N / 0821129.97W	Y	FB	TF	117.87	56.75			
JAFAR	285913.00N / 0820249.00W	Y	FB	TF	157.32	19.75			
En Route Transition									
BRKWL	291729.48N / 0821129.97W	Y		IF					BRKWL.JAFAR3
JAFAR	285913.00N / 0820249.00W	Y	FB	TF	157.32	19.75			
En Route Transition									
MJKAL	304734.89N / 0830544.66W	Y		IF					MJKAL.JAFAR3
HUNKR	300705.07N / 0822418.74W	Y	FB	TF	138.27	53.99			
DOWNO	294637.09N / 0821839.33W	Y	FB	TF	166.44	21.00			
BRKWL	291729.48N / 0821129.97W	Y	FB	TF	167.84	29.72			
JAFAR	285913.00N / 0820249.00W	Y	FB	TF	157.32	19.75			
Common Route									
JAFAR	285913.00N / 0820249.00W	Y		IF					JAFAR.JAFAR3
CRPIT	285249.26N / 0815522.49W	Y	FB	TF	134.30	09.13			
LAMMP	284719.11N / 0814553.93W	Y	FB	TF	123.36	09.97			
Common Route									
JAFAR	285913.00N / 0820249.00W	Y		IF					JAFAR.JAFAR3
RINGG	285246.17N / 0815514.86W	Y	FB	TF	134.05	09.24			
FLIPY	284818.00N / 0815044.43W	Y	FO	TF	138.38	05.96	AT 11000	AT 250K	
KISM,KORL				FM	138.38				



FEDERAL AVIATION ADMINISTRATION  
FLIGHT STANDARDS SERVICE  
STAR (DATA RECORD)

Arrival Name <b>JAFAR (RNAV)</b>	Number <b>THREE</b>	STAR Computer Code <b>JAFAR.JAFAR3</b>	Superseded Number <b>TWO</b>	Dated <b>12/02/2021</b>	Effective Date <b>19 May 2022</b>
-------------------------------------	------------------------	---	---------------------------------	----------------------------	--------------------------------------

FIX/NAVAID	LAT/LONG	C	FO/FB	LEG TYPE	TC	DIST (NM)	ALTITUDE	SPEED	REMARKS
<b>Runway Transition</b>									
LAMMP	284719.11N / 0814553.93W	Y		IF					
YAGGO	284414.28N / 0812619.08W	Y	FO	TF	100.04	17.48	AT 6000	AT 210K	
KMCO:RWY 17L,RWY 17R,RWY 18L,RWY 18R				FM	100.04				
<b>Runway Transition</b>									
LAMMP	284719.11N / 0814553.93W	Y		IF					
WISHH	284250.75N / 0813817.60W	Y	FB	TF	123.69	08.04	10000B12000	AT 250K	
HARAM	283619.44N / 0812540.10W	Y	FB	TF	120.31	12.87			
DORII	283416.14N / 0812526.98W	Y	FB	TF	174.63	02.06	AT/ABOVE 8000	AT 220K	
BRICE	282053.00N / 0812527.00W	Y	FO	TF	180.00	13.35	AT 5000	AT 210K	
KMCO:RWY 35L,RWY 35R,RWY 36L,RWY 36R				FM	180.00				