

FEDERAL AVIATION ADMINISTRATION  
FLIGHT STANDARDS SERVICE  
STANDARD TERMINAL ARRIVAL (STAR)

Bearings, headings, courses, tracks and radials are magnetic. Elevations and altitudes are in feet, MSL. Altitudes are minimum altitudes unless otherwise indicated.  
Ceilings are in feet above airport elevation. Distances are in nautical miles. Visibilities are in statute miles or feet RVR unless otherwise indicated.

Arrival Name SHFTY (RNAV)	Number SIX	STAR Computer Code SHFTY.SHFTY6	Superseded Number FIVE	Dated 02/28/2019	Effective Date 10/31/24				
TRANSITION ROUTES:									
Transition Name	Transition Computer Codes	From FIX/NAVAID	To FIX/NAVAID	Course	Distance	MEA	MOCA	MAA	Crossing Altitudes / Fixes
CYN TA	CYN TA.SHFTY6	CYN TA	CYN TA						
			BOCAP	188.63	25.29	FL180	1700		
			HEPOX	174.03	48.74	FL180	1700		
			WOSAK	174.15	35.87	FL180	1700		
			INPIN	174.08	14.60	FL180	1700		BETWEEN FL270 AND FL290
			VALCH	169.82	30.72	16000	1700		
			SHFTY	198.36	21.56	15000	1600		BETWEEN 17000 AND FL190
HIBAC	HIBAC.SHFTY6	HIBAC	HIBAC						
			PIVVV	206.69	16.00	FL180	2700		
			CRIZZ	238.40	18.01	FL180	2700		
			LOOOU	243.49	21.03	FL180	2700		AT FL240
			CRMIN	249.79	61.65	FL180	2700		AT FL200
			SHFTY	228.84	30.32	15000	1700		BETWEEN 17000 AND FL190
INPIN	INPIN.SHFTY6	INPIN	INPIN						BETWEEN FL270 AND FL290
			VALCH	169.82	30.72	16000	1700		
			SHFTY	198.36	21.56	15000	1600		BETWEEN 17000 AND FL190

**ARRIVAL ROUTE DESCRIPTION:**

KRSW: FROM SHFTY ON TRACK 182.71/6.78 TO WRTRS, THEN ON TRACK 160.67/15.50 TO CROSS BUNGE AT OR ABOVE 16000, THEN ON TRACK 160.72/15.50 TO MAZZY, THEN ON TRACK 160.74/7.01 TO CROSS MOEMO BETWEEN 10000 AND 11000 AND AT 250 KIAS, THEN ON TRACK 159.83/11.89 TO LBELL.

LANDING KRSW RWY 6: FROM LBELL ON TRACK 185.70/9.73 TO IRNIE, THEN ON TRACK 238.19/15.41 TO WYCOF, THEN ON TRACK 238.20/5.00 TO STERO, THEN ON TRACK 238.20. EXPECT RADAR VECTORS TO FINAL APPROACH COURSE.

LANDING KRSW RWY 24: FROM LBELL ON TRACK 227.70/14.94 TO CROSS RODDE AT OR ABOVE 3000. EXPECT RNP OR GPS RWY 24 APPROACH.

LANDING KAPF: FROM SHFTY ON TRACK 182.71/6.78 TO WRTRS, THEN ON TRACK 160.67/15.50 TO CROSS BUNGE AT OR ABOVE 16000, THEN ON TRACK 160.72/15.50 TO MAZZY, THEN ON TRACK 160.74/7.01 TO CROSS MOEMO BETWEEN 10000 AND 11000 AND AT 250 KIAS, THEN ON TRACK 159.83/11.89 TO LBELL, THEN ON TRACK 185.70/9.73 TO IRNIE, THEN ON TRACK 185.92/8.68 TO KOCH, THEN ON TRACK 202.94/13.69 TO COGDL, THEN ON TRACK 228.92/18.74 TO CROSS TIOFF AT OR ABOVE 3000, THEN ON TRACK 230.00. EXPECT RADAR VECTORS TO FINAL APPROACH COURSE.

LANDING KFMY: FROM SHFTY ON TRACK 182.71/6.78 TO WRTRS, THEN ON TRACK 160.67/15.50 TO CROSS BUNGE AT OR ABOVE 16000, THEN ON TRACK 160.72/15.50 TO MAZZY, THEN ON TRACK 160.74/7.01 TO CROSS MOEMO BETWEEN 10000 AND 11000 AND AT 250 KIAS, THEN ON TRACK 159.83/11.89 TO LBELL, THEN ON TRACK 185.70/9.73 TO IRNIE, THEN ON TRACK 238.19/15.41 TO WYCOF, THEN ON TRACK 238.20/16.14 TO CROSS PONTY AT OR ABOVE 4000, THEN ON TRACK 240.00. EXPECT RADAR VECTORS TO FINAL APPROACH COURSE.

LANDING KMKY: FROM SHFTY ON TRACK 182.71/6.78 TO WRTRS, THEN ON TRACK 160.67/15.50 TO CROSS BUNGE AT OR ABOVE 16000, THEN ON TRACK 160.72/15.50 TO MAZZY, THEN ON TRACK 160.74/7.01 TO CROSS MOEMO BETWEEN 10000 AND 11000 AND AT 250 KIAS, THEN ON TRACK 159.83/11.89 TO LBELL, THEN ON TRACK 185.70/9.73 TO IRNIE, THEN ON TRACK 185.92/8.68 TO KOCH, THEN ON TRACK 202.94/13.69 TO COGDL, THEN ON TRACK 200.07/5.13 TO CROSS KLAWS AT OR ABOVE 3000, THEN ON TRACK 200.07. EXPECT RADAR VECTORS TO FINAL APPROACH COURSE.

FEDERAL AVIATION ADMINISTRATION  
FLIGHT STANDARDS SERVICE  
STANDARD TERMINAL ARRIVAL (STAR)

Bearings, headings, courses, tracks and radials are magnetic. Elevations and altitudes are in feet, MSL. Altitudes are minimum altitudes unless otherwise indicated.  
Ceilings are in feet above airport elevation. Distances are in nautical miles. Visibilities are in statute miles or feet RVR unless otherwise indicated.

Arrival Name	Number	STAR Computer Code	Superseded Number	Dated	Effective Date
<b>SHFTY (RNAV)</b>	<b>SIX</b>	<b>SHFTY.SHFTY6</b>	<b>FIVE</b>	<b>02/28/2019</b>	<b>10/31/24</b>

**PBN REQUIREMENT NOTES:**

RNAV 1 - DME/DME/IRU OR GPS

**EQUIPMENT REQUIREMENT NOTES:**

RADAR REQUIRED

**PROCEDURAL DATA NOTES:**

NOTE: JET AND TURBOPROP AIRCRAFT ONLY

NOTE: AIRCRAFT LANDING KAPF: EXPECT RADAR VECTORS PRIOR TO TIOFF.

NOTE: DO NOT FILE INPIN TRANSITION - TO BE ASSIGNED BY ATC.

**FIXES AND/OR HOLDING PATTERNS:**

CHART HOLDING AT HEPOX: HOLD N, RT, 174.15 INBOUND, 11 NM LEGS.

CHART HOLDING AT MAZZY: HOLD N, RT, 160.74 INBOUND, 8 NM LEGS.

CHART HOLDING AT WOSAK: HOLD N, RT, 174.08 INBOUND, 11 NM LEGS.

CHART: VASQZ STAND-ALONE WAYPOINT.

**COMMUNICATIONS:**

CHART FORT MYERS APPROACH CONTROL

**AIRPORTS SERVED:**

<u>AIRPORT ID</u>	<u>CITY</u>	<u>STATE</u>
KRSW	FORT MYERS	FL
KMKY	MARCO ISLAND	FL
KAPF	NAPLES	FL
KFMY	FORT MYERS	FL

**LOST COMMUNICATIONS PREFERENCES:****REMARKS:**

ASSUMED 295 FT SHIP HEIGHT FOR OBSTS OVER WATER.

MEA ALTITUDES ARE THE RESULT OF A COMBINATION OF FACTORS TO INCLUDE: LACK OF AVAILABLE NAVAIDS FOR DME/DME ANALYSIS OVER THE ATLANTIC; AVOID CRITICAL DME;  
ENVIRONMENTAL IMPACT OF NOISE ANALYSIS.**ADDITIONAL FLIGHT DATA:**

DME/DME ASSESSMENT: SAT (RNP 2.0)

MAG VAR: KRSW 04W/2000

CHART AT STERO TERMINUS: KRSW LDG RWY 6

CHART AT RODDE TERMINUS: KRSW LDG RWY 24

FEDERAL AVIATION ADMINISTRATION  
FLIGHT STANDARDS SERVICE  
STANDARD TERMINAL ARRIVAL (STAR)

Bearings, headings, courses, tracks and radials are magnetic. Elevations and altitudes are in feet, MSL. Altitudes are minimum altitudes unless otherwise indicated.  
Ceilings are in feet above airport elevation. Distances are in nautical miles. Visibilities are in statute miles or feet RVR unless otherwise indicated.

Arrival Name	Number	STAR Computer Code	Superseded Number	Dated	Effective Date
<b>SHFTY (RNAV)</b>	<b>SIX</b>	<b>SHFTY.SHFTY6</b>	<b>FIVE</b>	<b>02/28/2019</b>	<b>10/31/24</b>

CHART AT TIOFF TERMINUS: LDG KAPF  
CHART AT PONTY TERMINUS: LDG KFMY  
CHART AT KLAWS TERMINUS: LDG KMKY

**FLIGHT INSPECTED BY:****ORGANIZATION:** **DATE:**

PENDING

Flight Inspected Signature: \_\_\_\_\_

*Digitally signed by*  
**JOSEPH L ZEDER**

Sep 05, 2024

**DEVELOPED BY:**

CASIMIR TABAKA (SILVIA YOUNG)

AJV-A432

1/2/2024

Developed By Signature: \_\_\_\_\_

*Digitally signed by*  
**CASIMIR L TABAKA**

Mar 21, 2024

**APPROVED BY:**

CASIMIR TABAKA

AJV-A432

Approved By Signature: \_\_\_\_\_

*Digitally signed by***CASIMIR L TABAKA**

Mar 21, 2024

**CHANGES:**

1. REMOVED CHART NOTES FOR EXPECTED ALTITUDE AND SPEED CONSTRAINTS AT INPIN, LOOOU, MOEMO, AND PONTY.
2. REMOVED HOLDING PATTERN AT SHFTY.
3. AMENDED CHART NOTE: TURBOJET AND TURBOPROP AIRCRAFT ONLY "TO" JET AND TURBOPROP AIRCRAFT ONLY.
4. REMOVED CHART NOTE: FOR NON-GPS EQUIPPED AIRCRAFT, LBV AND RSW MUST BE OPERATIONAL.
5. REMOVED TRV VORTAC FROM CHART.
6. ADDED ALTITUDE CONSTRAINT AT LOOOU OF AT FL240.
7. ADDED ALTITUDE CONSTRAINT AT INPIN OF BETWEEN FL270 AND FL290.
8. ADDED ALTITUDE CONSTRAINT AT CRMIN OF AT FL200.
9. ADDED ALTITUDE AND SPEED CONSTRAINT AT SHFTY OF BETWEEN 17000 AND FL190 AT 280K.
10. ADDED NEW WAYPOINT BUNGE WITH ALTITUDE CONSTRAINT OF AT/ABOVE 16000.
11. ADDED ALTITUDE AND SPEED CONSTRAINT AT MOEMO OF BETWEEN 10000 AND 11000 AT 250K.
12. REPLACED LBV VORTAC WITH NEW LBELL WAYPOINT.
13. ADDED ALTITUDE CONSTRAINT AT RODDE OF AT/ABOVE 3000.
14. AMENDED RWY 6 TRANSITION BY REMOVING PONTY AND ADDING NEW TERMINUS WAYPOINT STERO.
15. ADDED ALTITUDE CONSTRAINT AT PONTY OF AT/ABOVE 4000 TO FMY ROUTE.
16. ADDED ALTITUDE CONSTRAINT AT TIOFF OF AT/ABOVE 3000.
17. AMENDED MKY TRANSITION FROM COGDL TO NEW TERMINUS WAYPOINT KLAWS WITH ALTITUDE CONSTRAINT OF AT/ABOVE 3000.
18. LOWERED MEA ON VALCH TO SHFTY LEG AND CRMIN TO SHFTY LEG FROM FL180 TO 15000.
19. LOWERED MEA ON INPIN TO VALCH LEG FROM FL180 TO 16000.
20. ADDED INPIN TRANSITION AND IS ATC ASSIGNED ONLY.
21. UPDATED AND PUBLISHED MOCA DATA.
22. REMOVED MEA VALUES FROM ARRIVAL DESCRIPTION.
23. REMOVED AIRPORT NAMES FROM AIRPORTS SERVED.
24. REMOVED VM LEG FOR R24 TRANSITION.

FEDERAL AVIATION ADMINISTRATION  
FLIGHT STANDARDS SERVICE  
STANDARD TERMINAL ARRIVAL (STAR)

Bearings, headings, courses, tracks and radials are magnetic. Elevations and altitudes are in feet, MSL. Altitudes are minimum altitudes unless otherwise indicated.  
Ceilings are in feet above airport elevation. Distances are in nautical miles. Visibilities are in statute miles or feet RVR unless otherwise indicated.

Arrival Name	Number	STAR Computer Code	Superseded Number	Dated	Effective Date
<b>SHFTY (RNAV)</b>	<b>SIX</b>	<b>SHFTY.SHFTY6</b>	<b>FIVE</b>	<b>02/28/2019</b>	<b>10/31/24</b>

25. ADDED TERMINUS INFO TO ADDITIONAL FLIGHT DATA.

26. ADDED "ASSUMED 295 FT SHIP HEIGHT FOR OBSTS OVER WATER".

27. ADDED "MEA ALTITUDES ARE THE RESULT OF A COMBINATION OF FACTORS TO INCLUDE: LACK OF AVAILABLE NAVAIDS FOR DME/DME ANALYSIS OVER THE ATLANTIC; AVOID CRITICAL DME; ENVIRONMENTAL IMPACT OF NOISE ANALYSIS."

**REASONS:**

1. IAW 8260.19I, PARA 4-5-2(E).

2. ATC REQUEST.

3. IAW 8260.19I, PARA 4-5-2(F).

4. ADDEQUATE DME/DME COVERAGE EXISTS.

5. TRV VOR MON DECOMMISSION.

6-11. ATC REQUEST.

12. LBV VOR MON DECOMMISSION.

13. PER 8260.3E, PARA 2-2-7F(1).

14-17. ATC REQUEST.

18-19. ALLOWS FOR MORE GRADUAL DESCENT WITH NEW ALTITUDE CONSTRAINTS AT SHFTY AND BUNGE.

20. ATC REQUEST.

21. IAW 8260.19I, PARA 4-5-12B(8).

22. IAW 8260.19I, PARA 4-5-12.

23. PER CURRENT CRITERIA STANDARDS.

24. NOW CONNECTS TO IAPS.

25. IAW 8260.19I, PARA 4-5-2H(2).

26. PER IFP CHECKLIST.

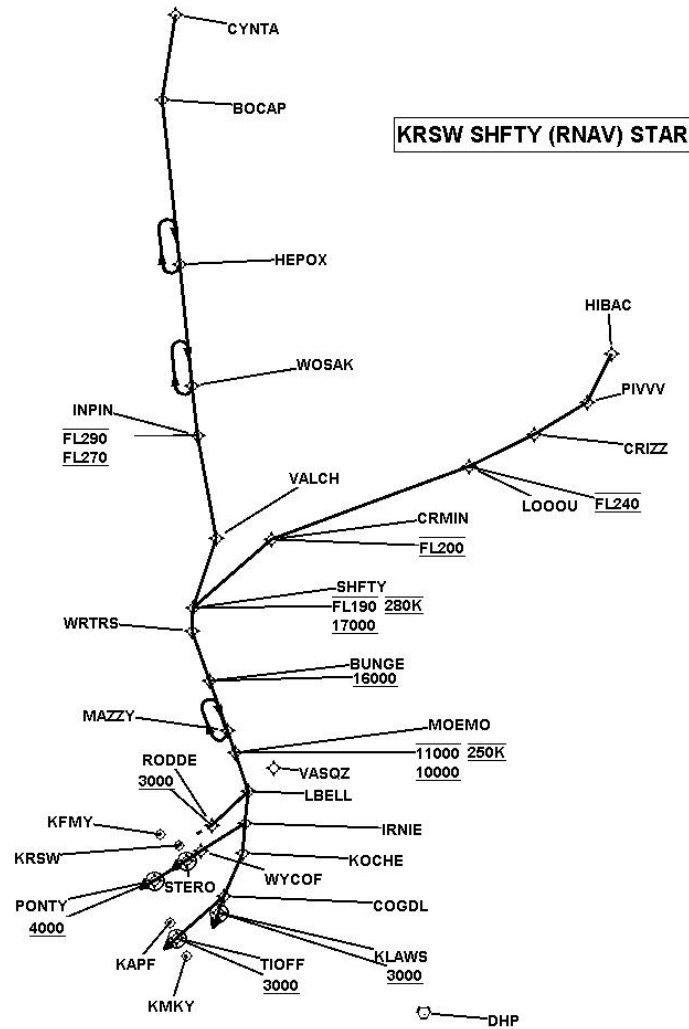
27. REMARKS AS PER 8260.3E, 2-2-7D(4) REQUIREMENTS.

09/05/52024: THIS IS AN UPDATED COPY OF THE FORM DEVELOPED ON 01/02/2024.  
HARD DATED PROCEDURE TO 10/31/24

FEDERAL AVIATION ADMINISTRATION  
FLIGHT STANDARDS SERVICE  
STANDARD TERMINAL ARRIVAL (STAR)

Bearings, headings, courses, tracks and radials are magnetic. Elevations and altitudes are in feet, MSL. Altitudes are minimum altitudes unless otherwise indicated.  
Ceilings are in feet above airport elevation. Distances are in nautical miles. Visibilities are in statute miles or feet RVR unless otherwise indicated.

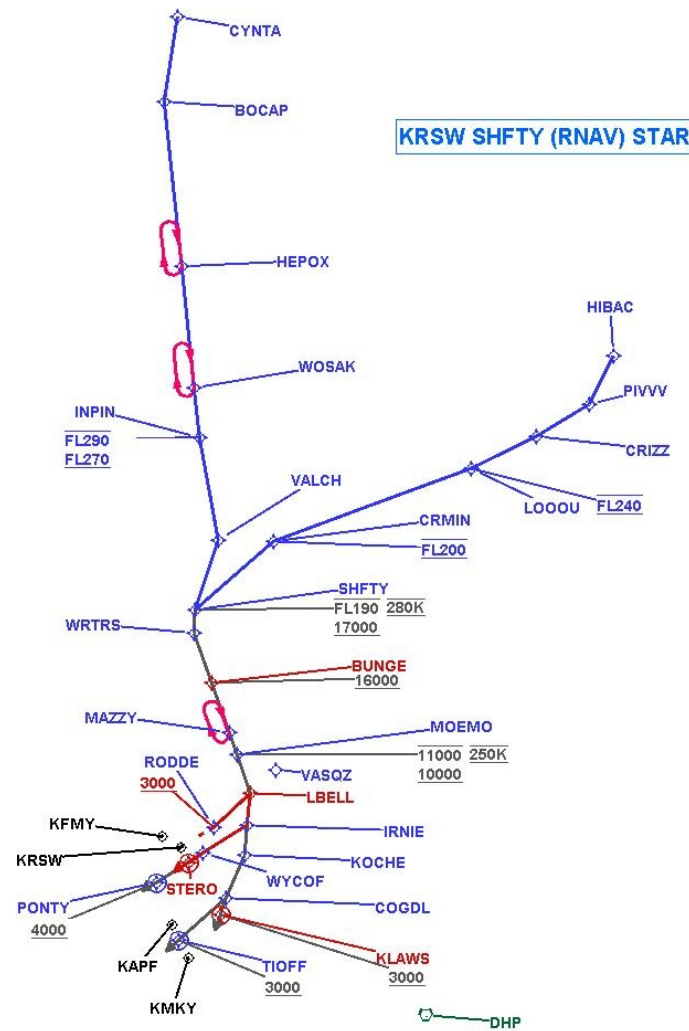
Arrival Name	Number	STAR Computer Code	Superseded Number	Dated	Effective Date
<b>SHFTY (RNAV)</b>	<b>SIX</b>	<b>SHFTY.SHFTY6</b>	<b>FIVE</b>	<b>02/28/2019</b>	<b>10/31/24</b>
<b>Graphic Depiction 1</b>					



FEDERAL AVIATION ADMINISTRATION  
FLIGHT STANDARDS SERVICE  
STANDARD TERMINAL ARRIVAL (STAR)

Bearings, headings, courses, tracks and radials are magnetic. Elevations and altitudes are in feet, MSL. Altitudes are minimum altitudes unless otherwise indicated.  
Ceilings are in feet above airport elevation. Distances are in nautical miles. Visibilities are in statute miles or feet RVR unless otherwise indicated.

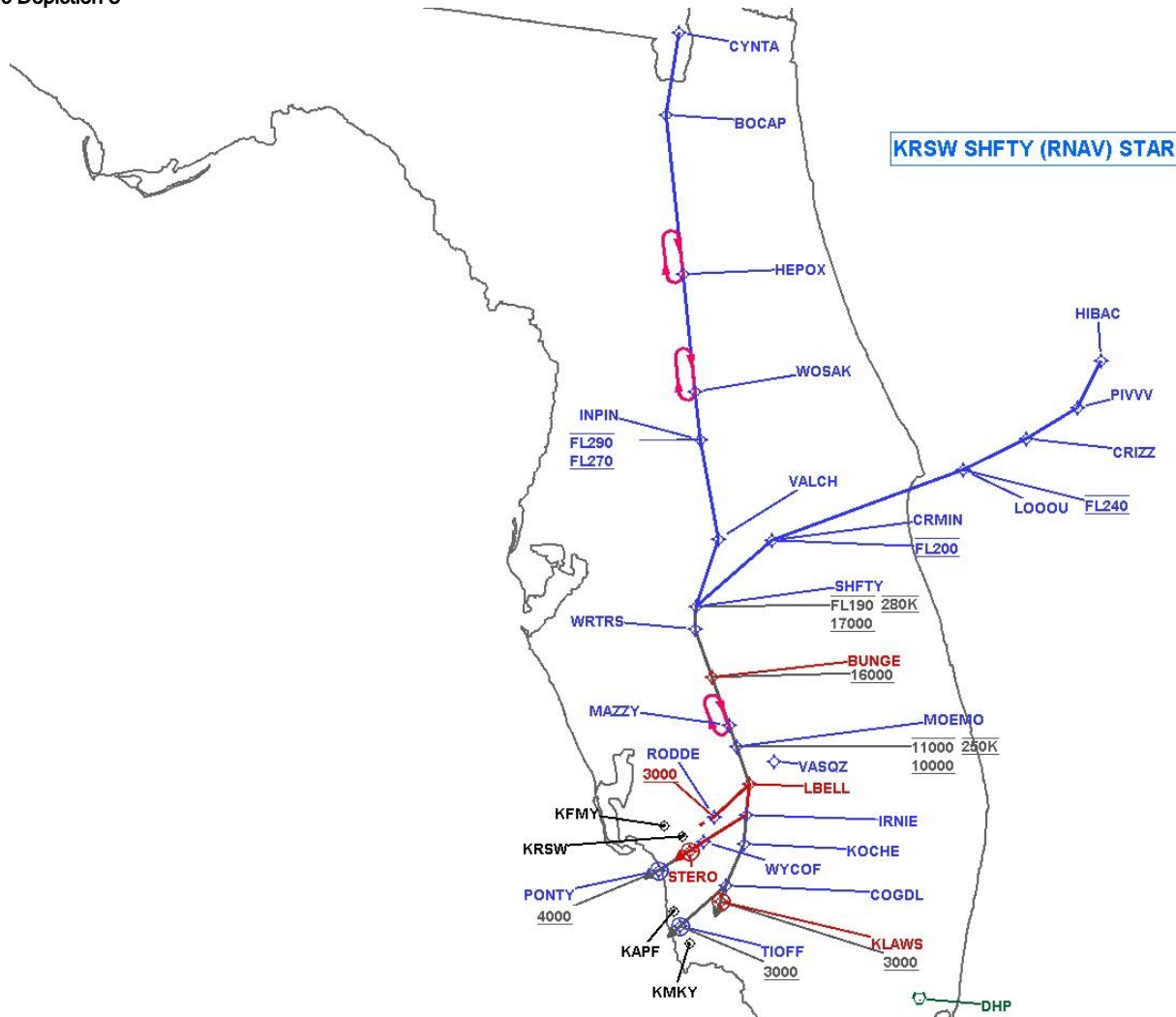
Arrival Name	Number	STAR Computer Code	Superseded Number	Dated	Effective Date
SHFTY (RNAV)	SIX	SHFTY.SHFTY6	FIVE	02/28/2019	10/31/24
Graphic Depiction 2					



FEDERAL AVIATION ADMINISTRATION  
FLIGHT STANDARDS SERVICE  
STANDARD TERMINAL ARRIVAL (STAR)

Bearings, headings, courses, tracks and radials are magnetic. Elevations and altitudes are in feet, MSL. Altitudes are minimum altitudes unless otherwise indicated.  
Ceilings are in feet above airport elevation. Distances are in nautical miles. Visibilities are in statute miles or feet RVR unless otherwise indicated.

Arrival Name	Number	STAR Computer Code	Superseded Number	Dated	Effective Date
SHFTY (RNAV)	SIX	SHFTY.SHFTY6	FIVE	02/28/2019	10/31/24
Graphic Depiction 3					



FEDERAL AVIATION ADMINISTRATION  
FLIGHT STANDARDS SERVICE  
STAR (DATA RECORD)

Arrival Name SHFTY (RNAV)		Number SIX		STAR Computer Code SHFTY.SHFTY6		Superseded Number FIVE		Dated 02/28/2019	Effective Date 10/31/24
FIX/NAVAID	LAT/LONG	C	FO/FB	LEG TYPE	TC	DIST (NM)	ALTITUDE	SPEED	REMARKS
En Route Transition									
CYNTA	303627.06N / 0820535.45W	Y		IF					CYNTA.SHFTY6
BOCAP	301111.14N / 0820756.72W	Y	FB	TF	184.63	25.29			
HEPOX	292303.61N / 0815817.40W	Y	FB	TF	170.03	48.74			
WOSAK	284737.74N / 0815118.19W	Y	FB	TF	170.15	35.87			
INPIN	283312.69N / 0814826.80W	Y	FB	TF	170.08	14.60	FL270BFL290		
VALCH	280320.55N / 0813956.25W	Y	FB	TF	165.82	30.72			
SHFTY	274223.99N / 0814557.72W	Y	FB	TF	194.36	21.56	17000BFL190	AT 280K	
En Route Transition									
HIBAC	290538.63N / 0793404.65W	Y		IF					HIBAC.SHFTY6
PIVVV	285050.64N / 0794106.19W	Y	FB	TF	202.69	16.00			
CRIZZ	284019.00N / 0795745.00W	Y	FB	TF	234.40	18.01			
LOOOU	282935.00N / 0801819.00W	Y	FB	TF	239.49	21.03	AT FL240		
CRMIN	280359.42N / 0812152.52W	Y	FB	TF	245.79	61.65	AT FL200		
SHFTY	274223.99N / 0814557.72W	Y	FB	TF	224.84	30.32	17000BFL190	AT 280K	
En Route Transition									
INPIN	283312.69N / 0814826.80W	Y		IF			FL270BFL290		INPIN.SHFTY6
VALCH	280320.55N / 0813956.25W	Y	FB	TF	165.82	30.72			
SHFTY	274223.99N / 0814557.72W	Y	FB	TF	194.36	21.56	17000BFL190	AT 280K	
Common Route									
SHFTY	274223.99N / 0814557.72W	Y		IF			17000BFL190	AT 280K	SHFTY.SHFTY6
WRTRS	273535.89N / 0814547.44W	Y	FB	TF	178.71	06.78			
BUNGE	272119.36N / 0813853.83W	Y	FB	TF	156.67	15.50	AT/ABOVE 16000		
MAZZY	270702.28N / 0813201.90W	Y	FB	TF	156.72	15.50			
MOEMO	270035.01N / 0812856.03W	Y	FB	TF	156.74	07.01	10000B11000	AT 250K	
LBELL	264942.01N / 0812329.45W	Y	FB	TF	155.83	11.89			



FEDERAL AVIATION ADMINISTRATION  
FLIGHT STANDARDS SERVICE  
STAR (DATA RECORD)

Arrival Name SHFTY (RNAV)		Number SIX		STAR Computer Code SHFTY.SHFTY6		Superseded Number FIVE		Dated 02/28/2019	Effective Date 10/31/24
FIX/NAVAID	LAT/LONG	C	FO/FB	LEG TYPE	TC	DIST (NM)	ALTITUDE	SPEED	REMARKS
Common Route									
SHFTY	274223.99N / 0814557.72W	Y		IF			17000BFL190	AT 280K	SHFTY.SHFTY6
WRTRS	273535.89N / 0814547.44W	Y	FB	TF	178.71	06.78			
BUNGE	272119.36N / 0813853.83W	Y	FB	TF	156.67	15.50	AT/ABOVE 16000		
MAZZY	270702.28N / 0813201.90W	Y	FB	TF	156.72	15.50			
MOEMO	270035.01N / 0812856.03W	Y	FB	TF	156.74	07.01	10000B11000	AT 250K	
LBELL	264942.01N / 0812329.45W	Y	FB	TF	155.83	11.89			
IRNIE	263956.70N / 0812348.77W	Y	FB	TF	181.70	09.73			
KOCHE	263114.78N / 0812408.26W	Y	FB	TF	181.92	08.68			
COGDL	261815.36N / 0812904.94W	Y	FB	TF	198.94	13.69			
TIOFF	260455.97N / 0814346.73W	Y	FO	TF	224.92	18.74	AT/ABOVE 3000		
KAPF				FM	226.00				
Common Route									
SHFTY	274223.99N / 0814557.72W	Y		IF			17000BFL190	AT 280K	SHFTY.SHFTY6
WRTRS	273535.89N / 0814547.44W	Y	FB	TF	178.71	06.78			
BUNGE	272119.36N / 0813853.83W	Y	FB	TF	156.67	15.50	AT/ABOVE 16000		
MAZZY	270702.28N / 0813201.90W	Y	FB	TF	156.72	15.50			
MOEMO	270035.01N / 0812856.03W	Y	FB	TF	156.74	07.01	10000B11000	AT 250K	
LBELL	264942.01N / 0812329.45W	Y	FB	TF	155.83	11.89			
IRNIE	263956.70N / 0812348.77W	Y	FB	TF	181.70	09.73			
WYCOF	263053.26N / 0813744.82W	Y	FB	TF	234.19	15.41			
PONTY	262124.31N / 0815219.28W	Y	FO	TF	234.20	16.14	AT/ABOVE 4000		
KFMY				FM	236.00				
Common Route									
SHFTY	274223.99N / 0814557.72W	Y		IF			17000BFL190	AT 280K	SHFTY.SHFTY6
WRTRS	273535.89N / 0814547.44W	Y	FB	TF	178.71	06.78			
BUNGE	272119.36N / 0813853.83W	Y	FB	TF	156.67	15.50	AT/ABOVE 16000		
MAZZY	270702.28N / 0813201.90W	Y	FB	TF	156.72	15.50			



**FEDERAL AVIATION ADMINISTRATION  
FLIGHT STANDARDS SERVICE  
STAR (DATA RECORD)**

Arrival Name SHFTY (RNAV)		Number SIX		STAR Computer Code SHFTY.SHFTY6		Superseded Number FIVE		Dated 02/28/2019	Effective Date 10/31/24
<u>FIX/NAVAID</u>	<u>LAT/LONG</u>	<u>C</u>	<u>FO/FB</u>	<u>LEG TYPE</u>	<u>TC</u>	<u>DIST (NM)</u>	<u>ALTITUDE</u>	<u>SPEED</u>	<u>REMARKS</u>
MOEMO	270035.01N / 0812856.03W	Y	FB	TF	156.74	07.01	10000B11000	AT 250K	
LBELL	264942.01N / 0812329.45W	Y	FB	TF	155.83	11.89			
IRNIE	263956.70N / 0812348.77W	Y	FB	TF	181.70	09.73			
KOCHE	263114.78N / 0812408.26W	Y	FB	TF	181.92	08.68			
COGDL	261815.36N / 0812904.94W	Y	FB	TF	198.94	13.69			
KLAWS	261318.51N / 0813039.72W	Y	FO	TF	196.07	05.13	AT/ABOVE 3000		
KMKY				FM	196.07				
Runway Transition									
LBELL	264942.01N / 0812329.45W	Y		IF					
IRNIE	263956.70N / 0812348.77W	Y	FB	TF	181.70	09.73			
WYCOF	263053.26N / 0813744.82W	Y	FB	TF	234.19	15.41			
STERO	262757.18N / 0814215.95W	Y	FO	TF	234.20	05.00			
KRSW:RWY 6				FM	234.20				
Runway Transition									
LBELL	264942.01N / 0812329.45W	Y		IF					
RODDE	263851.49N / 0813500.75W	Y	FB	TF	223.70	14.94	AT/ABOVE 3000		
KRSW:RWY 24									