

FEDERAL AVIATION ADMINISTRATION
 FLIGHT STANDARDS SERVICE
 STANDARD TERMINAL ARRIVAL (STAR)

Bearings, headings, courses, tracks and radials are magnetic. Elevations and altitudes are in feet, MSL. Altitudes are minimum altitudes unless otherwise indicated. Ceilings are in feet above airport elevation. Distances are in nautical miles. Visibilities are in statute miles or feet RVR unless otherwise indicated.

Arrival Name MUNGI (RNAV)	Number ONE	STAR Computer Code MUNGI.MUNGI1	Superseded Number NONE	Dated	Effective Date 19 MAR 2026
-------------------------------------	----------------------	---	----------------------------------	-------	--------------------------------------

TRANSITION ROUTES:

Transition Name	Transition Computer Codes	From FIX/NAVAID	To FIX/NAVAID	Course	Distance	MEA	MOCA	MAA	Crossing Altitudes / Fixes
CCLUB	CCLUB.MUNGI1	CCLUB	CCLUB						
			ZALUP	302.85	74.57	8000	2700		
			MUNGI	310.21	17.20	6000	2700		
CHEFS	CHEFS.MUNGI1	CHEFS	CHEFS						BETWEEN FL190 AND FL210
			MOOTS	344.90	12.44	8000	2700	AT/ABOVE 15000	
			MUNGI	341.02	24.43	6000	2700		
KUTNE	KUTNE.MUNGI1	KUTNE	KUTNE						
			CORNN	018.12	54.63	FL180	2700		
			BANDZ	345.67	30.90	FL180	2700	BETWEEN FL210 AND FL230	
			CHEFS	345.46	16.96	16000	2700	BETWEEN FL190 AND FL210	
			MOOTS	344.90	12.44	8000	2700	AT/ABOVE 15000	
LAIZY	LAIZY.MUNGI1	LAIZY	MUNGI	341.02	24.43	6000	2700		
			CORNN	298.89	30.74	FL180	2700		
			BANDZ	345.67	30.90	FL180	2700	BETWEEN FL210 AND FL230	
			CHEFS	345.46	16.96	16000	2700	BETWEEN FL190 AND FL210	
			MOOTS	344.90	12.44	8000	2700	AT/ABOVE 15000	
OCTAL	OCTAL.MUNGI1	OCTAL	MUNGI	341.02	24.43	6000	2700		
			CORNN	340.88	31.11	FL180	2700	AT/BELOW FL300	
			BANDZ	345.67	30.90	FL180	2700	BETWEEN FL210 AND FL230	
			CHEFS	345.46	16.96	16000	2700	BETWEEN FL190 AND FL210	
			MOOTS	344.90	12.44	8000	2700	AT/ABOVE 15000	
SPIFF	SPIFF.MUNGI1	SPIFF	MUNGI	341.02	24.43	6000	2700		
			ZALUP	270.54	25.38	8000	2700		



FEDERAL AVIATION ADMINISTRATION
 FLIGHT STANDARDS SERVICE
 STANDARD TERMINAL ARRIVAL (STAR)

Bearings, headings, courses, tracks and radials are magnetic. Elevations and altitudes are in feet, MSL. Altitudes are minimum altitudes unless otherwise indicated. Ceilings are in feet above airport elevation. Distances are in nautical miles. Visibilities are in statute miles or feet RVR unless otherwise indicated.

Arrival Name	Number	STAR Computer Code	Superseded Number	Dated	Effective Date				
MUNGI (RNAV)	ONE	MUNGI.MUNGI1	NONE		19 MAR 2026				
Transition Name	Transition Computer Codes	From FIX/NAVAID	To FIX/NAVAID	Course	Distance	MEA	MOCA	MAA	Crossing Altitudes / Fixes
			MUNGI	310.21	17.20	6000	2700		
WAPOM	WAPOM.MUNGI1	WAPOM	WAPOM						
			MUNGI	351.16	37.95	6000	2700		

ARRIVAL ROUTE DESCRIPTION:

MCO: FROM MUNGI ON TRACK 345.43/9.38 TO HIJON.

LANDING MCO RWY 17L/R, 18L/R: FROM HIJON ON TRACK 344.69/12.28 TO CROSS PARRX BETWEEN 9000 AND 11000 AND AT 250 KIAS, THEN ON TRACK 005.06/7.10 TO CROSS HAANZ BETWEEN 8000 AND 9000 AND AT 220 KIAS, THEN ON TRACK 005.58/9.03 TO CROSS WONMR AT 6000 AND AT 210 KIAS, THEN ON TRACK 005.58. EXPECT RADAR VECTORS TO FINAL APPROACH COURSE.

LANDING MCO RWY 35L/R, 36L/R: FROM HIJON ON TRACK 345.68/4.39 TO CROSS MMADD AT 6000 AND AT 210 KIAS, THEN ON TRACK 301.56. EXPECT RADAR VECTORS TO FINAL APPROACH COURSE.

LANDING ISM: FROM MUNGI ON TRACK 345.43/6.99 TO CROSS PDLLA AT 8000, THEN ON TRACK 345.43. EXPECT RADAR VECTORS TO FINAL APPROACH COURSE.

LANDING LEE/SFB/ORL: FROM MUNGI ON TRACK 345.43/7.09 TO CROSS BLOKD AT 12000 AND AT 250 KIAS, THEN ON TRACK 345.43. EXPECT RADAR VECTORS TO FINAL APPROACH COURSE.

PBN REQUIREMENT NOTES:

RNAV 1 - DME/DME/IRU OR GPS

EQUIPMENT REQUIREMENT NOTES:

RADAR REQUIRED

PROCEDURAL DATA NOTES:

NOTE: JET AIRCRAFT ONLY

NOTE: EXPECT "DESCEND VIA" CLEARANCE AND LANDING DIRECTION (NORTH OR SOUTH) BY ARTCC. FOR VERTICAL NAVIGATION PLANNING, LANDING SOUTH, SELECT RWY 17L, LANDING NORTH, SELECT RWY 35R.

NOTE: MCO APPROACH WILL ISSUE LANDING RUNWAY.

NOTE: DO NOT FILE LAIZY AND SPIFF TRANSITIONS - TO BE ASSIGNED BY ATC.

NOTE: CCLUB TRANSITION, ATC ASSIGNED ONLY EXCEPT AT OR BELOW FL240.

FIXES AND/OR HOLDING PATTERNS:

CHART HOLDING AT MUNGI: HOLD S, RT, 345.43 INBOUND, 10 NM LEGS.

CHART HOLDING AT ZALUP: HOLD SE, RT, 310.21 INBOUND, 10 NM LEGS.

COMMUNICATIONS:

AIRPORTS SERVED:

AIRPORT ID	CITY	STATE
MCO	ORLANDO	FL
ORL	ORLANDO	FL
ISM	ORLANDO	FL
LEE	LEESBURG	FL
SFB	ORLANDO	FL



FEDERAL AVIATION ADMINISTRATION
 FLIGHT STANDARDS SERVICE
 STANDARD TERMINAL ARRIVAL (STAR)

Bearings, headings, courses, tracks and radials are magnetic. Elevations and altitudes are in feet, MSL. Altitudes are minimum altitudes unless otherwise indicated. Ceilings are in feet above airport elevation. Distances are in nautical miles. Visibilities are in statute miles or feet RVR unless otherwise indicated.

Arrival Name	Number	STAR Computer Code	Superseded Number	Dated	Effective Date
MUNGI (RNAV)	ONE	MUNGI.MUNGI1	NONE		19 MAR 2026

LOST COMMUNICATIONS PREFERENCES:

REMARKS:

THE ENVIRONMENTAL REVIEW UNDER ORDER 1050.1 (LATEST EDITION) AND THE NOISE SCREENING HAVE BEEN ACCOMPLISHED.
 UTILIZED BANK ANGLE 16 DEGREES AT WP ZALUP.
 2700 FT MOCA VALUES DUE TO 1626 MSL TWR (12-003655) LOCATED BETWEEN HIJON-PARRX.

ADDITIONAL FLIGHT DATA:

DME/DME ASSESSMENT: SAT (RNP 2.0)
 MAG VAR: MCO 06W/2015
 CHART AT MMADD TERMINUS: MCO LDG RWY 35L/R, 36L/R
 CHART AT WONMR TERMINUS: MCO LDG RWY 17L/R, 18L/R
 CHART AT PDLLA TERMINUS: LDG ISM
 CHART AT BLOKD TERMINUS: LDG LEE/ORL/SFB

FLIGHT INSPECTED BY:

KENNETH E JACK

ORGANIZATION:

AJF

DATE:

12/18/2025

Flight Inspected Signature:

Digitally signed by

CASIMIR L TABAKA

Dec 23, 2025

Digitally signed by

CASIMIR L TABAKA

Digitally signed by Nov 25, 2025

CASIMIR L TABAKA

Nov 25, 2025

DEVELOPED BY:

RAFAEL A MARTINEZ

AJV-A421

10/21/2025

Developed By Signature:

APPROVED BY:

BEV L BORDY

AJV-A420

Approved By Signature:

CHANGES:

REASONS:

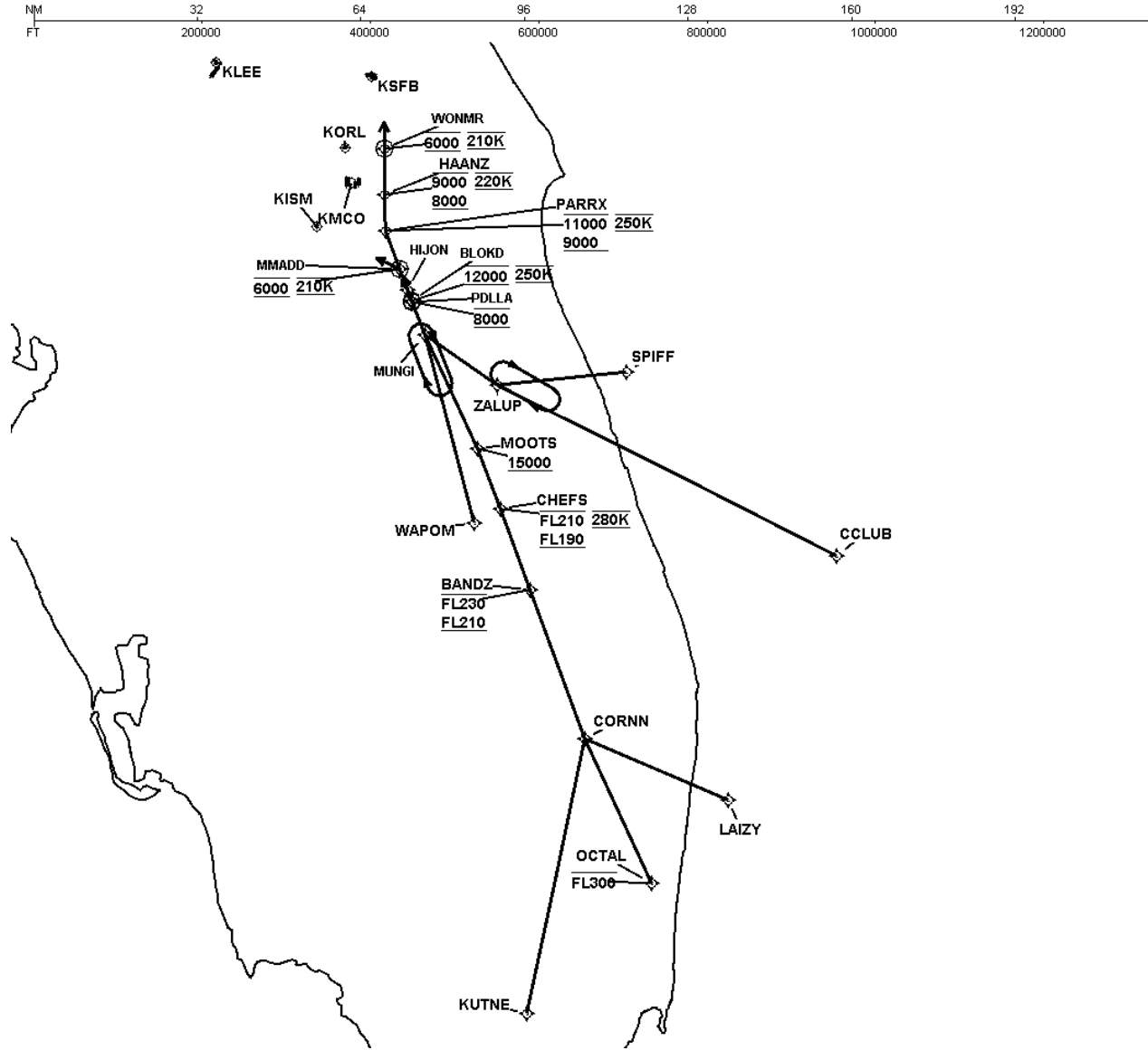


FEDERAL AVIATION ADMINISTRATION
FLIGHT STANDARDS SERVICE
STANDARD TERMINAL ARRIVAL (STAR)

Bearings, headings, courses, tracks and radials are magnetic. Elevations and altitudes are in feet, MSL. Altitudes are minimum altitudes unless otherwise indicated.
Ceilings are in feet above airport elevation. Distances are in nautical miles. Visibilities are in statute miles or feet RVR unless otherwise indicated.

Arrival Name	Number	STAR Computer Code	Superseded Number	Dated	Effective Date
MUNGI (RNAV)	ONE	MUNGI.MUNGI1	NONE		19 MAR 2026

Graphic Depiction 1

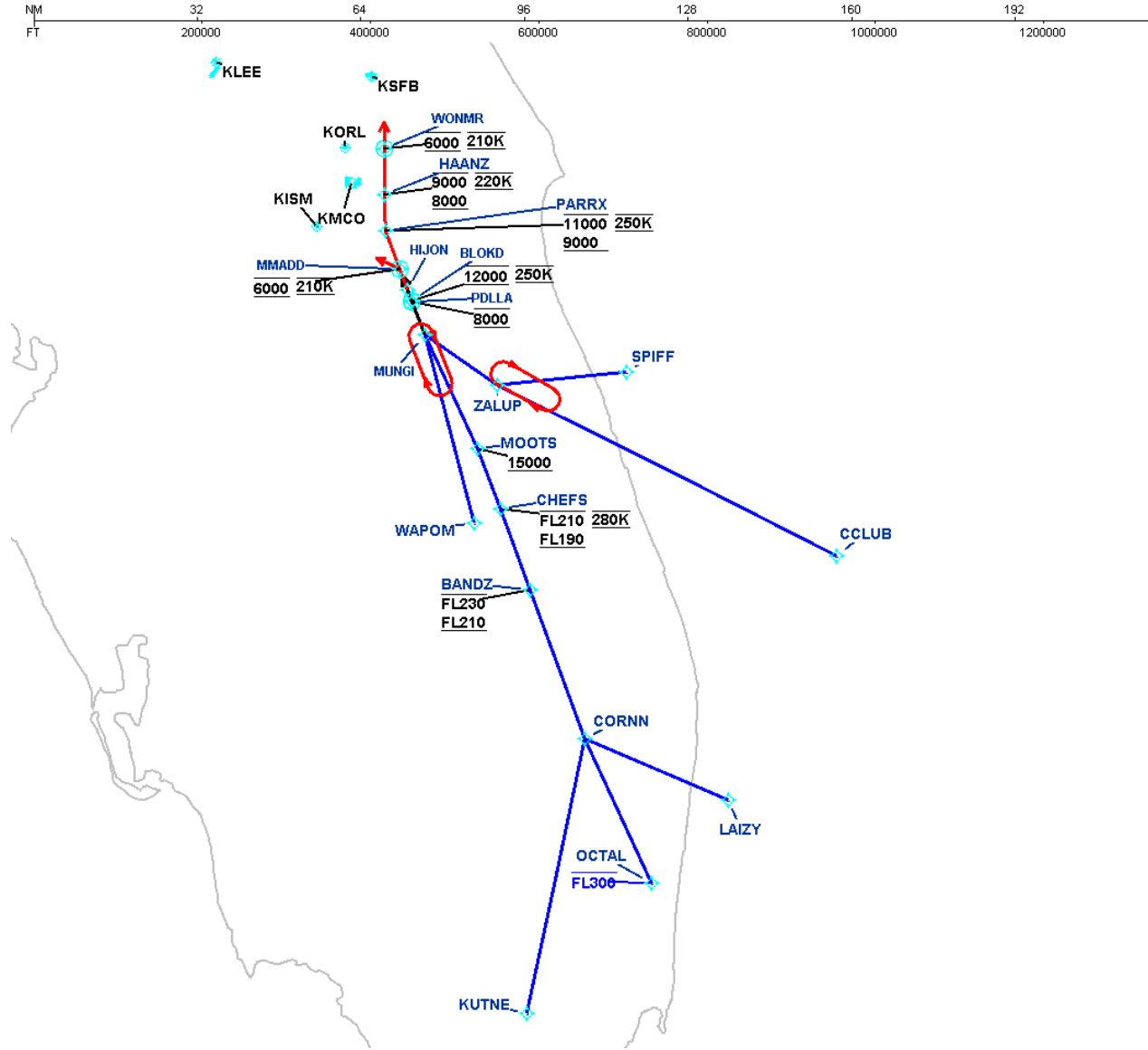


FEDERAL AVIATION ADMINISTRATION
FLIGHT STANDARDS SERVICE
STANDARD TERMINAL ARRIVAL (STAR)

Bearings, headings, courses, tracks and radials are magnetic. Elevations and altitudes are in feet, MSL. Altitudes are minimum altitudes unless otherwise indicated.
Ceilings are in feet above airport elevation. Distances are in nautical miles. Visibilities are in statute miles or feet RVR unless otherwise indicated.

Arrival Name	Number	STAR Computer Code	Superseded Number	Dated	Effective Date
MUNGI (RNAV)	ONE	MUNGI.MUNGI1	NONE		19 MAR 2026

Graphic Depiction 2



FEDERAL AVIATION ADMINISTRATION
FLIGHT STANDARDS SERVICE
STAR (DATA RECORD)

Arrival Name MUNGI (RNAV)	Number ONE	STAR Computer Code MUNGI.MUNGI1		Superseded Number NONE		Dated	Effective Date 19 MAR 2026		
FIX/NAVAID	LAT/LONG	C	FO/FB	LEG TYPE	TC	DIST (NM)	ALTITUDE	SPEED	REMARKS
En Route Transition									
CCLUB	271258.23N / 0793116.72W	Y		IF					CCLUB.MUNGI1
ZALUP	274624.15N / 0804616.83W	Y	FB	TF	296.85	74.57			
MUNGI	275605.00N / 0810220.22W	Y	FB	TF	304.21	17.20			
En Route Transition									
CHEFS	272214.97N / 0804538.96W	Y		IF			FL190BFL210	AT 280K	CHEFS.MUNGI1
MOOTS	273353.00N / 0805041.25W	Y	FB	TF	338.90	12.44	AT/ABOVE 15000		
MUNGI	275605.00N / 0810220.22W	Y	FB	TF	335.02	24.43			
En Route Transition									
KUTNE	254342.77N / 0803943.96W	Y		IF					KUTNE.MUNGI1
CORNN	263716.28N / 0802655.91W	Y	FB	TF	012.12	54.63			
BANDZ	270619.32N / 0803857.91W	Y	FB	TF	339.67	30.90	FL210BFL230		
CHEFS	272214.97N / 0804538.96W	Y	FB	TF	339.46	16.96	FL190BFL210	AT 280K	
MOOTS	273353.00N / 0805041.25W	Y	FB	TF	338.90	12.44	AT/ABOVE 15000		
MUNGI	275605.00N / 0810220.22W	Y	FB	TF	335.02	24.43			
En Route Transition									
LAIZY	262520.14N / 0795519.96W	Y		IF					LAIZY.MUNGI1
CORNN	263716.28N / 0802655.91W	Y	FB	TF	292.89	30.74			
BANDZ	270619.32N / 0803857.91W	Y	FB	TF	339.67	30.90	FL210BFL230		
CHEFS	272214.97N / 0804538.96W	Y	FB	TF	339.46	16.96	FL190BFL210	AT 280K	
MOOTS	273353.00N / 0805041.25W	Y	FB	TF	338.90	12.44	AT/ABOVE 15000		
MUNGI	275605.00N / 0810220.22W	Y	FB	TF	335.02	24.43			
En Route Transition									
OCTAL	260901.92N / 0801211.60W	Y		IF			AT/BELOW FL300		OCTAL.MUNGI1
CORNN	263716.28N / 0802655.91W	Y	FB	TF	334.88	31.11			
BANDZ	270619.32N / 0803857.91W	Y	FB	TF	339.67	30.90	FL210BFL230		



FEDERAL AVIATION ADMINISTRATION
FLIGHT STANDARDS SERVICE
STAR (DATA RECORD)

Arrival Name MUNGI (RNAV)	Number ONE	STAR Computer Code MUNGI.MUNGI1		Superseded Number NONE		Dated	Effective Date 19 MAR 2026		
FIX/NAVAID	LAT/LONG	C	FO/FB	LEG TYPE	TC	DIST (NM)	ALTITUDE	SPEED	REMARKS
CHEFS	272214.97N / 0804538.96W	Y	FB	TF	339.46	16.96	FL190BFL210	AT 280K	
MOOTS	273353.00N / 0805041.25W	Y	FB	TF	338.90	12.44	AT/ABOVE 15000		
MUNGI	275605.00N / 0810220.22W	Y	FB	TF	335.02	24.43			
En Route Transition									
SPIFF	274852.31N / 0801747.79W	Y		IF					SPIFF.MUNGI1
ZALUP	274624.15N / 0804616.83W	Y	FB	TF	264.54	25.38			
MUNGI	275605.00N / 0810220.22W	Y	FB	TF	304.21	17.20			
En Route Transition									
WAPOM	271918.06N / 0805121.54W	Y		IF					WAPOM.MUNGI1
MUNGI	275605.00N / 0810220.22W	Y	FB	TF	345.16	37.95			
Common Route									
MUNGI	275605.00N / 0810220.22W	Y		IF					MUNGI.MUNGI1
HIJON	280453.30N / 0810603.78W	Y	FB	TF	339.43	09.38			
Common Route									
MUNGI	275605.00N / 0810220.22W	Y		IF					MUNGI.MUNGI1
PDLLA	280238.70N / 0810506.76W	Y	FO	TF	339.43	06.99	AT 8000		
KISM				FM	339.43				
Common Route									
MUNGI	275605.00N / 0810220.22W	Y		IF					MUNGI.MUNGI1
BLOKD	280244.33N / 0810509.15W	Y	FO	TF	339.43	07.09	AT 12000	AT 250K	
KLEE,KORL,KSFB				FM	339.43				
Runway Transition									
HIJON	280453.30N / 0810603.78W	Y		IF					
PARRX	281621.59N / 0811107.10W	Y	FB	TF	338.69	12.28	9000B11000	AT 250K	



FEDERAL AVIATION ADMINISTRATION
 FLIGHT STANDARDS SERVICE
 STAR (DATA RECORD)

Arrival Name	Number	STAR Computer Code	Superseded Number	Dated	Effective Date				
MUNGI (RNAV)	ONE	MUNGI.MUNGI1	NONE		19 MAR 2026				
<u>FIX/NAVAID</u>	<u>LAT/LONG</u>	<u>C</u>	<u>FO/FB</u>	<u>LEG TYPE</u>	<u>TC</u>	<u>DIST (NM)</u>	<u>ALTITUDE</u>	<u>SPEED</u>	<u>REMARKS</u>
HAANZ	282328.89N / 08111114.99W	Y	FB	TF	359.06	07.10	8000B9000	AT 220K	
WONMR	283232.14N / 08111119.47W	Y	FO	TF	359.58	09.03	AT 6000	AT 210K	
KMCO:RWY 17L,RWY 17R,RWY 18L,RWY 18R				FM	359.58				
Runway Transition									
HIJON	280453.30N / 0810603.78W	Y		IF					
MMADD	280900.93N / 0810747.27W	Y	FO	TF	339.68	04.39	AT 6000	AT 210K	
KMCO:RWY 35L,RWY 35R,RWY 36L,RWY 36R				FM	295.56				

