

FEDERAL AVIATION ADMINISTRATION
FLIGHT STANDARDS SERVICE
STANDARD TERMINAL ARRIVAL (STAR)

Bearings, headings, courses, tracks and radials are magnetic. Elevations and altitudes are in feet, MSL. Altitudes are minimum altitudes unless otherwise indicated.
Distances are in nautical miles (NM). Graphic depictions attached.

Arrival Name KOHOE (RNAV)	Number FOUR	STAR Computer Code KOHOE.KOHOE4	Superseded Number THREE	Dated 11/13/2014	Effective Date 26 MAR 20
-------------------------------------	-----------------------	---	-----------------------------------	----------------------------	------------------------------------

TRANSITION ROUTES:

Transition Name	Transition Computer Codes	From FIX/NAVAID	To FIX/NAVAID	Course	Distance	MEA	MOCA	MAA	Crossing Altitudes / Fixes
HASTINGS	HSI.KOHOE4	HSI VOR/DME	HSI VOR/DME			FL200			
			BRWRY	268.84	102.31	FL200			
			MRRAY	249.99	16.88	FL200			
			PUFFR	249.17	57.67	FL200			
			PIEKE	248.49	20.78	FL200			
			KOHOE	248.20	39.98	16000	6000		
WOLBACH	OBH.KOHOE4	OBH VORTAC	OBH VORTAC			FL200			
			BRWRY	244.09	110.39	FL200			
			MRRAY	249.99	16.88	FL200			
			PUFFR	249.17	57.67	FL200			
			PIEKE	248.49	20.78	FL200			
			KOHOE	248.20	39.98	16000	6000		
SPAWN	SPAWN.KOHOE4	SPAWN	SPAWN			FL200			
			BRWRY	253.84	107.42	FL200			
			MRRAY	249.99	16.88	FL200			
			PUFFR	249.17	57.67	FL200			
			PIEKE	248.49	20.78	FL200			
			KOHOE	248.20	39.98	16000	6000		

ARRIVAL ROUTE DESCRIPTION:

FROM KOHOE ON TRACK 247.65/5.00 TO CROSS SLMON AT OR ABOVE 17000, THEN ON TRACK 247.56/10.00 TO CROSS SAYGE BETWEEN 17000 AND 22000 AND AT 250 KIAS, THEN ON TRACK 231.02/10.00 TO EEZEE, THEN ON TRACK 230.90/6.25 TO CROSS MOKME BETWEEN 15000 AND 17000, THEN ON TRACK 230.99/14.00 TO CROSS DHATT BETWEEN 13000 AND 15000 AND AT 250 KIAS, THEN ON TRACK 230.89/4.61 TO FFFAT, THEN ON TRACK 172.74/6.11 TO CROSS DOGGG AT 11000 AND AT 210 KIAS, THEN ON TRACK 172.71/8.91 TO DONTT, THEN ON TRACK 172.75/9.63 TO BARRK, THEN ON TRACK 172.75. EXPECT RADAR VECTORS TO FINAL APPROACH COURSE.

PROCEDURAL DATA NOTES:

NOTE: RADAR REQUIRED

NOTE: RNAV 1

NOTE: DME/DME/IRU OR GPS REQUIRED

NOTE: TURBOJET AIRCRAFT ONLY

NOTE: EXPECT RUNWAY ASSIGNMENT ON INITIAL CONTACT WITH DENVER TRACON.

THIS PROCEDURE IS A CORRECTED COPY PREVIOUSLY PUBLISHED IN NFDD 024. SEE PAGE 3



FEDERAL AVIATION ADMINISTRATION
FLIGHT STANDARDS SERVICE
STANDARD TERMINAL ARRIVAL (STAR)

Bearings, headings, courses, tracks and radials are magnetic. Elevations and altitudes are in feet, MSL. Altitudes are minimum altitudes unless otherwise indicated.
Distances are in nautical miles (NM). Graphic depictions attached.

Arrival Name	Number	STAR Computer Code	Superseded Number	Dated	Effective Date
KOHAE (RNAV)	FOUR	KOHAE.KOHAE4	THREE	11/13/2014	26 MAR 20

NOTE: DESCEND VIA MACH NUMBER UNTIL TRANSITION TO 280K. MAINTAIN 280K UNTIL SLOWED BY STAR OR ASSIGNED BY ATC.

NOTE: FOR NON-GPS EQUIPPED AIRCRAFT USING OBH TRANSITION, ONL DME MUST BE OPERATIONAL.

FIXES AND/OR HOLDING PATTERNS:

CHART HOLDING AT HSI VOR/DME (HOLD E, RT, 260.00 INBOUND, 10 NM LEGS).

CHART HOLDING AT MRRAY (HOLD E, RT, 249.99 INBOUND, 10 NM LEGS).

CHART HOLDING AT OBH VORTAC (HOLD E, RT, 260.00 INBOUND, 10 NM LEGS).

CHART HOLDING AT PIEKE (HOLD E, RT, 248.49 INBOUND, 10 NM LEGS).

CHART HOLDING AT SLMON (HOLD E, RT, 247.65 INBOUND, 10 NM LEGS).

CHART HOLDING AT SPAWN (HOLDE, RT, 260.00 INBOUND, 10 NM LEGS).

COMMUNICATIONS:

DEN APP CON, D-ATIS ARR.

AIRPORTS SERVED:

DENVER INTL, DENVER, CO (KDEN)

LOST COMMUNICATIONS PROCEDURE:

IN THE EVENT OF LOST COMMUNICATIONS PRIOR TO RUNWAY ASSIGNMENT, EXECUTE THE ILS RWY 35L.

REMARKS:

ABBREVIATED AMENDMENT--SINGLE FIX NAME CHANGE.

MOUNTAINOUS ROC REDUCTION REQUIRED FOR LEGS DOGGG TO DONTT TO BARRK. TARGETS VERIFIED NO PRECIPITOUS TERRAIN PRESENT. MAXIMUM TREE HEIGHT WITHIN 50 NM OF DEN IS 50FT AGL. SOURCE; COLORADO STATE FOREST SERVICE. TREE HEIGHT APPLIED TO 6447 MSL TERRAIN FOR AN MEA OF 8200 TO BE APPLIED FROM FFFAT TO BARRK.

ADDITIONAL FLIGHT DATA:

DME/DME ASSESSMENT: SAT (RNP 2.0)

REFERENCE MAGNETIC VARIATION = KDEN 08E/2015.



FEDERAL AVIATION ADMINISTRATION
FLIGHT STANDARDS SERVICE
STANDARD TERMINAL ARRIVAL (STAR)

Bearings, headings, courses, tracks and radials are magnetic. Elevations and altitudes are in feet, MSL. Altitudes are minimum altitudes unless otherwise indicated.
Distances are in nautical miles (NM). Graphic depictions attached.

Arrival Name KOHOE (RNAV)	Number FOUR	STAR Computer Code KOHOE.KOHOE4	Superseded Number THREE	Dated 11/13/2014	Effective Date 26 MAR 20
FLIGHT INSPECTED BY: FLIGHT INSPECTION REVIEW NOT REQUIRED-PROCESSED IAW AIRCRAFT OPERATIONS GROUP (AJW-333) MEMO, DEC 22, 2017				Digitally signed by JACOB POWERS Feb 06, 2020	
DEVELOPED BY: JOHN CONNOLLY, DENVER METROPLEX MANAGER			Organization DENVER ARTCC	Date 10/18/2019	Signature Digitally signed by JACOB POWERS Feb 06, 2020
APPROVED BY: PAT MULQUEEN			Organization AJV-A440	Date 	Signature Digitally signed by JACOB POWERS Feb 06, 2020

CHANGES:

1. CHANGED MNNOW FIX NAME TO BRWRY.
2. REMOVED MEA'S/MOCA'S FROM COMMON ROUTE.
3. REMOVED RECOMMENDED NAVAID.

REASONS:

1. ATC REQUEST--THE NEW KDEN LONGZ STAR HAS BRWRY WP IN SAME LOCATION AS THE CURRENT MNNOW WP. THIS CHANGE WILL SYNCHRONIZE BOTH STARS TO USE THE SAME FIX NAME FOR THE SAME FIX LOCATION.
2. IAW 8260.19H.
3. NO LONGER REQUIRED.

1/31/2020: THIS IS A CORRECTED COPY OF THE FORM APPROVED ON 1/16/2020.

1. STAR COMPUTER CODED CORRECTED FROM KOHOE.KOHOE TO KOHOE.KOHOE4.

2/6/2020: THIS IS A CORRECTED COPY OF THE FORM APPROVED ON 1/16/2020.

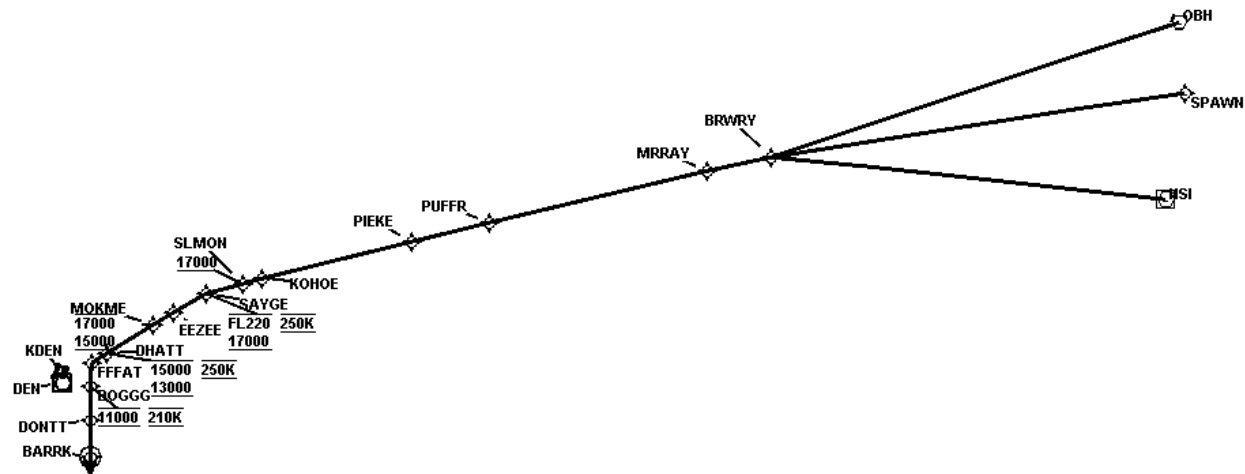
1. REMOVED NOTE REFERENCING WAHUU AS CORRESPONDING STAR FOR SOUTH FLOW.

QUALITY
14
CHECKED

FEDERAL AVIATION ADMINISTRATION
FLIGHT STANDARDS SERVICE
STANDARD TERMINAL ARRIVAL (STAR)

Bearings, headings, courses, tracks and radials are magnetic. Elevations and altitudes are in feet, MSL. Altitudes are minimum altitudes unless otherwise indicated.
Distances are in nautical miles (NM). Graphic depictions attached.

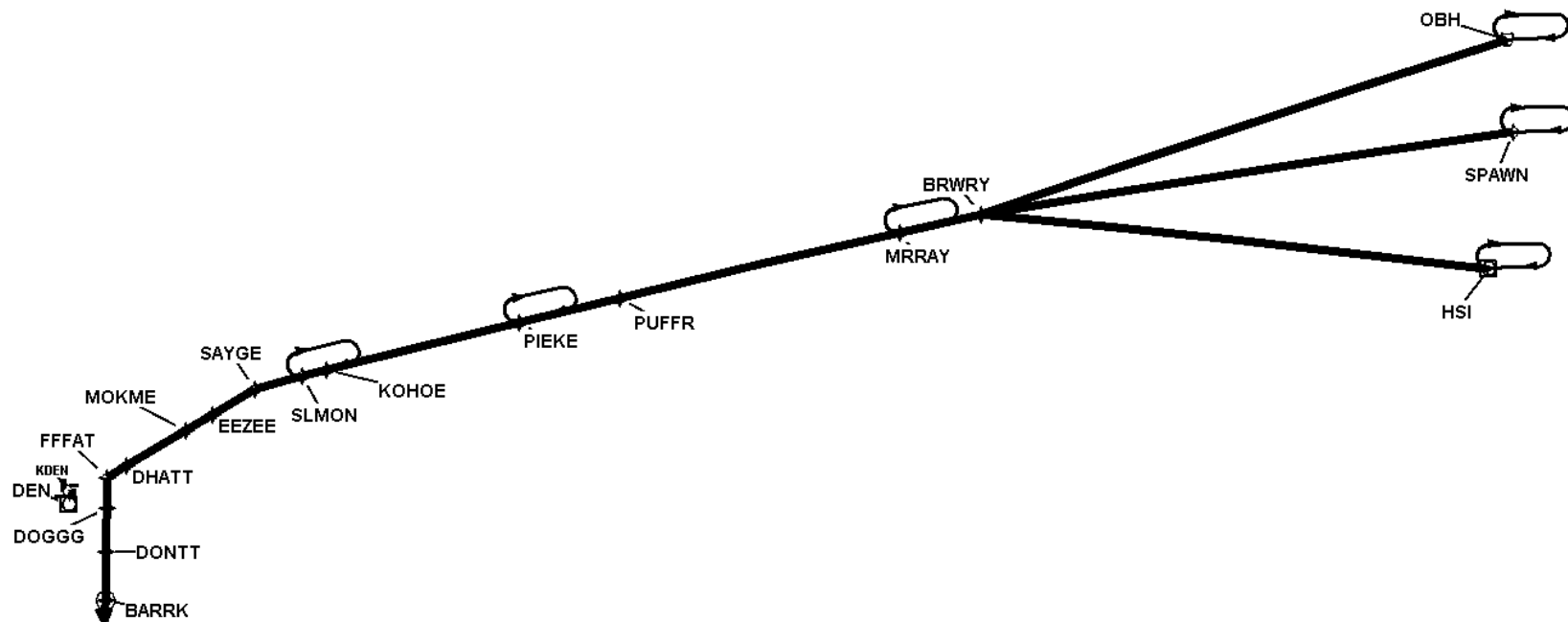
Arrival Name	Number	STAR Computer Code	Superseded Number	Dated	Effective Date
KOHOE (RNAV)	FOUR	KOHOE.KOHOE4	THREE	11/13/2014	26 MAR 20
Graphic Depiction 1					



FEDERAL AVIATION ADMINISTRATION
FLIGHT STANDARDS SERVICE
STANDARD TERMINAL ARRIVAL (STAR)

Bearings, headings, courses, tracks and radials are magnetic. Elevations and altitudes are in feet, MSL. Altitudes are minimum altitudes unless otherwise indicated.
Distances are in nautical miles (NM). Graphic depictions attached.

Arrival Name	Number	STAR Computer Code	Superseded Number	Dated	Effective Date
KOHAE (RNAV)	FOUR	KOHAE.KOHAE4	THREE	11/13/2014	26 MAR 20
Graphic Depiction 2					



FEDERAL AVIATION ADMINISTRATION
FLIGHT STANDARDS SERVICE
STAR (DATA RECORD)

Arrival Name KOHAE (RNAV)	Number FOUR	STAR Computer Code KOHAE.KOHAE4	Superseded Number THREE	Dated 11/13/2014	Effective Date 26 MAR 20				
FIX/NAVAID	LAT/LONG	C	FO/FB	LEG TYPE	TC	DIST (NM)	ALTITUDE	SPEED	REMARKS
En Route Transition									
HSI VOR/DME	403616.33N / 0982546.62W	Y		IF					HSI.KOHAE4
BRWRY	404710.65N / 1003931.00W	Y	FB	TF	276.84	102.31			
MRRAY	404337.82N / 1010113.80W	Y	FB	TF	257.99	16.88			
PUFFR	403025.20N / 1021456.82W	Y	FB	TF	257.17	57.67			
PIEKE	402530.63N / 1024124.22W	Y	FB	TF	256.49	20.78			
KOHAE	401547.07N / 1033207.29W	Y	FB	TF	256.20	39.98			
En Route Transition									
OBH VORTAC	412232.65N / 0982112.94W	Y		IF					OBH.KOHAE4
BRWRY	404710.65N / 1003931.00W	Y	FB	TF	252.09	110.39			
MRRAY	404337.82N / 1010113.80W	Y	FB	TF	257.99	16.88			
PUFFR	403025.20N / 1021456.82W	Y	FB	TF	257.17	57.67			
PIEKE	402530.63N / 1024124.22W	Y	FB	TF	256.49	20.78			
KOHAE	401547.07N / 1033207.29W	Y	FB	TF	256.20	39.98			
En Route Transition									
SPAWN	410350.89N / 0981930.47W	Y		IF					SPAWN.KOHAE4
BRWRY	404710.65N / 1003931.00W	Y	FB	TF	261.84	107.42			
MRRAY	404337.82N / 1010113.80W	Y	FB	TF	257.99	16.88			
PUFFR	403025.20N / 1021456.82W	Y	FB	TF	257.17	57.67			
PIEKE	402530.63N / 1024124.22W	Y	FB	TF	256.49	20.78			
KOHAE	401547.07N / 1033207.29W	Y	FB	TF	256.20	39.98			
Common Route									
KOHAE	401547.07N / 1033207.29W	Y		IF					KOHAE.KOHAE4
SLMON	401432.54N / 1033826.68W	Y	FB	TF	255.65	05.00	AT/ABOVE 17000		
SAYGE	401202.15N / 1035104.99W	Y	FB	TF	255.56	10.00	17000BFL220	AT 250K	
EEZEE	400652.57N / 1040215.52W	Y	FB	TF	239.02	10.00			
MOKME	400338.56N / 1040913.68W	Y	FB	TF	238.90	06.25	15000B17000		

FEDERAL AVIATION ADMINISTRATION
FLIGHT STANDARDS SERVICE
STAR (DATA RECORD)

Arrival Name KOHAE (RNAV)	Number FOUR	STAR Computer Code KOHAE.KOHAE4	Superseded Number THREE	Dated 11/13/2014	Effective Date 26 MAR 20
------------------------------	----------------	------------------------------------	----------------------------	---------------------	------------------------------------

FIX/NAVAID	LAT/LONG	C	FO/FB	LEG TYPE	TC	DIST (NM)	ALTITUDE	SPEED	REMARKS
DHATT	395624.36N / 1042449.66W	Y	FB	TF	238.99	14.00	13000B15000	AT 250K	
FFFAT	395401.30N / 1042957.17W	Y	FB	TF	238.89	04.61			
DOGGG	394754.32N / 1043003.31W	Y	FB	TF	180.74	06.11	AT 11000	AT 210K	
DONTT	393859.05N / 1043011.90W	Y	FB	TF	180.71	08.91			
BARRK	392921.00N / 1043021.69W	Y	FO	TF	180.75	09.63			
KDEN				FM	180.75				