

FEDERAL AVIATION ADMINISTRATION
FLIGHT STANDARDS SERVICE
STANDARD TERMINAL ARRIVAL (STAR)

Bearings, headings, courses, tracks and radials are magnetic. Elevations and altitudes are in feet, MSL. Altitudes are minimum altitudes unless otherwise indicated.
Ceilings are in feet above airport elevation. Distances are in nautical miles. Visibilities are in statute miles or feet RVR unless otherwise indicated.

Arrival Name	Number	STAR Computer Code	Superseded Number	Dated	Effective Date
BLFRG (RNAV)	THREE	BLFRG.BLFRG3	TWO	05/19/2022	20 Feb 2025

TRANSITION ROUTES:

Transition Name	Transition Computer Codes	From FIX/NAVAID	To FIX/NAVAID	Course	Distance	MEA	MOCA	MAA	Crossing Altitudes / Fixes
COREA	COREA.BLFRG3	COREA	COREA						
			BLFRG	313.75	42.85	4000	1500		
FERAL	FERAL.BLFRG3	FERAL	FERAL						
			BLFRG	358.95	34.27	4000	2600		
JAYMC	JAYMC.BLFRG3	JAYMC	JAYMC						
			BLFRG	288.74	25.89	4000	1500		
OCTAL	OCTAL.BLFRG3	OCTAL	OCTAL						
			COREA	303.27	61.74	4000	1500		
			BLFRG	313.75	42.85	4000	1500		

ARRIVAL ROUTE DESCRIPTION:

TPA: FROM BLFRG ON TRACK 327.92/21.48 TO COSAR, THEN ON TRACK 325.33/5.65 TO DSIDE.

LANDING TPA RWY 1L/R, 10: FROM DSIDE ON TRACK 320.75/20.92 TO JSTRM, THEN ON TRACK 275.87/2.00 TO CROSS CRUZZ AT OR ABOVE 4000, THEN ON TRACK 275.87. EXPECT RADAR VECTORS TO FINAL APPROACH COURSE.

LANDING TPA RWY 19L/R, 28: FROM DSIDE ON TRACK 320.75/20.92 TO JSTRM, THEN ON TRACK 006.22/17.89 TO GUZDA, THEN ON TRACK 006.23/12.33 TO CROSS LISAF AT OR ABOVE 4000 AND AT 210 KIAS, THEN ON TRACK 005.00. EXPECT RADAR VECTORS TO FINAL APPROACH COURSE.

LANDING CLW/PIE/MCF/SPG: FROM BLFRG ON TRACK 327.92/21.48 TO COSAR, THEN ON TRACK 325.33/5.65 TO DSIDE, THEN ON TRACK 320.84/7.84 TO CROSS OXISE AT OR ABOVE 4000, THEN ON TRACK 285.00. EXPECT RADAR VECTORS TO FINAL APPROACH COURSE.

PBN REQUIREMENT NOTES:

RNAV 1 - DME/DME/IRU OR GPS

EQUIPMENT REQUIREMENT NOTES:

RADAR REQUIRED.

PROCEDURAL DATA NOTES:

FIXES AND/OR HOLDING PATTERNS:

CHART HOLDING AT BLFRG: HOLD SE, RT, 317.03 INBOUND, 10 NM LEGS.

CHART HOLDING AT COSAR: HOLD SE, LT, 327.92 INBOUND, 10 NM LEGS.

CHART HOLDING AT TOSHE: HOLD S, LT, 340.00 INBOUND, 10 NM LEGS.

CHART: LAGOO, BUCCS.

COMMUNICATIONS:



FEDERAL AVIATION ADMINISTRATION
FLIGHT STANDARDS SERVICE
STANDARD TERMINAL ARRIVAL (STAR)

Bearings, headings, courses, tracks and radials are magnetic. Elevations and altitudes are in feet, MSL. Altitudes are minimum altitudes unless otherwise indicated.
Ceilings are in feet above airport elevation. Distances are in nautical miles. Visibilities are in statute miles or feet RVR unless otherwise indicated.

Arrival Name	Number	STAR Computer Code	Superseded Number	Dated	Effective Date
BLFRG (RNAV)	THREE	BLFRG.BLFRG3	TWO	05/19/2022	20 Feb 2025

AIRPORTS SERVED:

<u>AIRPORT ID</u>	<u>CITY</u>	<u>STATE</u>
TPA	TAMPA	FL
SPG	ST PETERSBURG	FL
CLW	CLEARWATER	FL
MCF	TAMPA	FL
PIE	ST PETERSBURG-CLEARWATER	FL

LOST COMMUNICATIONS PREFERENCES:

REMARKS:

THE ENVIRONMENTAL REVIEW UNDER ORDER 1050.1 (LATEST EDITION) AND THE NOISE SCREENING HAVE BEEN ACCOMPLISHED.

ADDITIONAL FLIGHT DATA:

DME/DME ASSESSMENT: SAT (RNP 2.0)

MAG VAR: KTPA 05W/2010.

CHART AT LISAF TERMINUS: TPA LDG RWY 19L/R, 28.

CHART AT CRUZZ TERMINUS: TPA LDG RWY 1L/R, 10.

CHART AT OXISE TERMINUS: LDG CLW, PIE, MCF, SPG.

FLIGHT INSPECTED BY:

ORGANIZATION: DATE:

ERIC L GEYER

AJF

10/31/2024

Flight Inspected Signature:

Digitally signed by

ERIC N SUSKI

Nov 04, 2024

DEVELOPED BY:

ERIC N SUSKI (JUDITH TUTTLE)

AJV-A431

07/24/2024

Developed By Signature:

Digitally signed by

ERIC N SUSKI

Nov 04, 2024

APPROVED BY:

ERIC N SUSKI

AJV-A431

Approved By Signature:

Digitally signed by

ERIC N SUSKI

Nov 04, 2024

CHANGES:

1. ADDED AIRPORTS CLW, SPG.
2. REMOVED NOTE: JET AND TURBOPROP AIRCRAFT ONLY.
3. AMEMDED ALL TERMINATIONS TO FM TRACKS.
4. REMOVED AIRPORT K IDENTs FROM 17.1.
5. UPDATED JAYMC TRANSITION AT BLFRG MOCA FROM "1400" TO "1500."

QUALITY
14
CHECKED

FEDERAL AVIATION ADMINISTRATION
FLIGHT STANDARDS SERVICE
STANDARD TERMINAL ARRIVAL (STAR)

Bearings, headings, courses, tracks and radials are magnetic. Elevations and altitudes are in feet, MSL. Altitudes are minimum altitudes unless otherwise indicated.
Ceilings are in feet above airport elevation. Distances are in nautical miles. Visibilities are in statute miles or feet RVR unless otherwise indicated.

Arrival Name	Number	STAR Computer Code	Superseded Number	Dated	Effective Date
BLFRG (RNAV)	THREE	BLFRG.BLFRG3	TWO	05/19/2022	20 Feb 2025

REASONS:

- 1-3. ATC REQUEST.
4. IAW CURRENT DOCUMENTATION STANDARDS.
5. UPDATED SURVEY, UPDATED OBSTACLE EVALUATION.

QUALITY
14
CHECKED

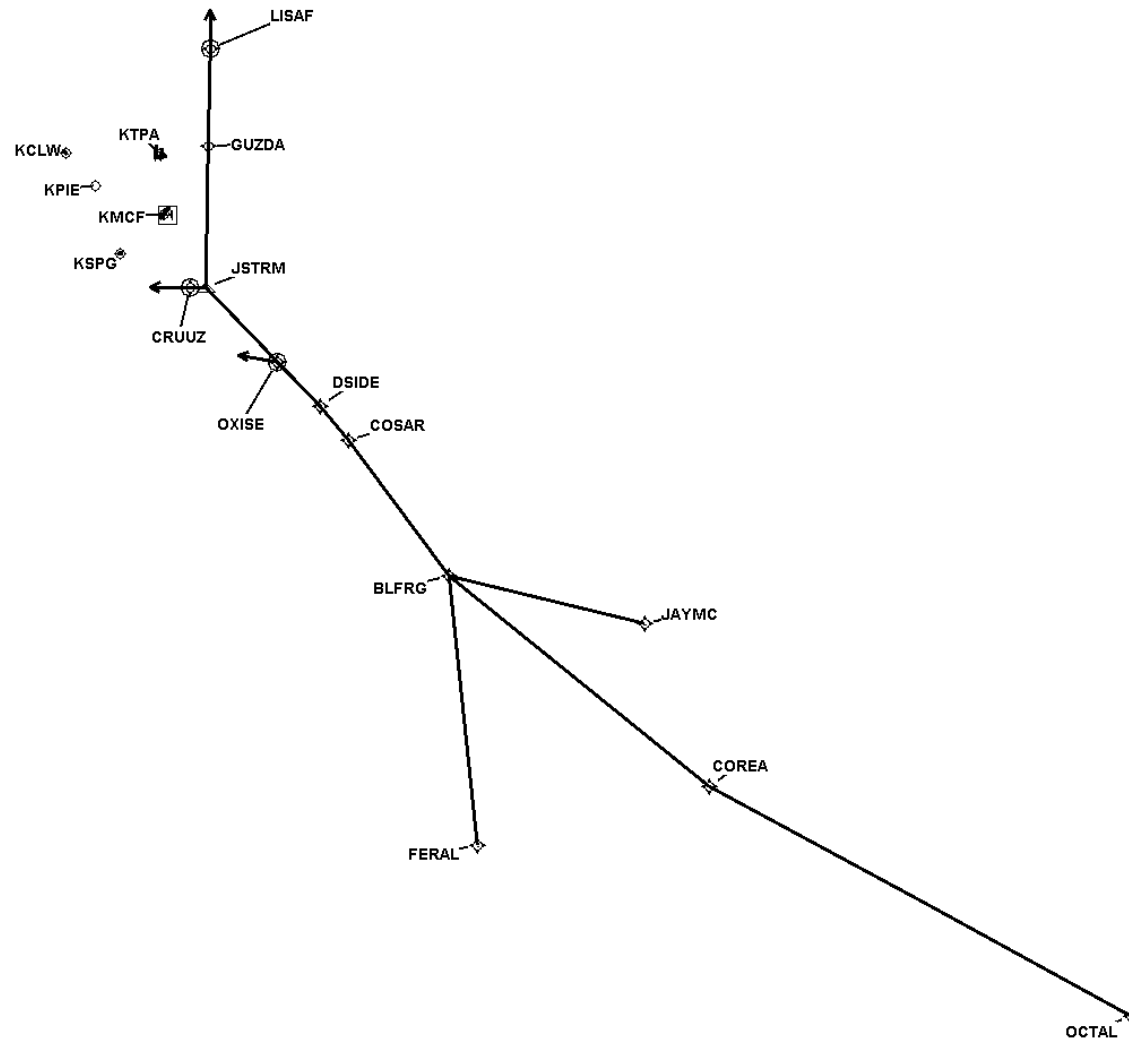
FEDERAL AVIATION ADMINISTRATION
FLIGHT STANDARDS SERVICE
STANDARD TERMINAL ARRIVAL (STAR)

Bearings, headings, courses, tracks and radials are magnetic. Elevations and altitudes are in feet, MSL. Altitudes are minimum altitudes unless otherwise indicated.
Ceilings are in feet above airport elevation. Distances are in nautical miles. Visibilities are in statute miles or feet RVR unless otherwise indicated.

Arrival Name	Number	STAR Computer Code	Superseded Number	Dated	Effective Date
BLFRG (RNAV)	THREE	BLFRG.BLFRG3	TWO	05/19/2022	20 Feb 2025

Graphic Depiction 1

NM	33	66	99	132	165	198
FT	200000	400000	600000	800000	1000000	1200000
1" = 131984 feet						



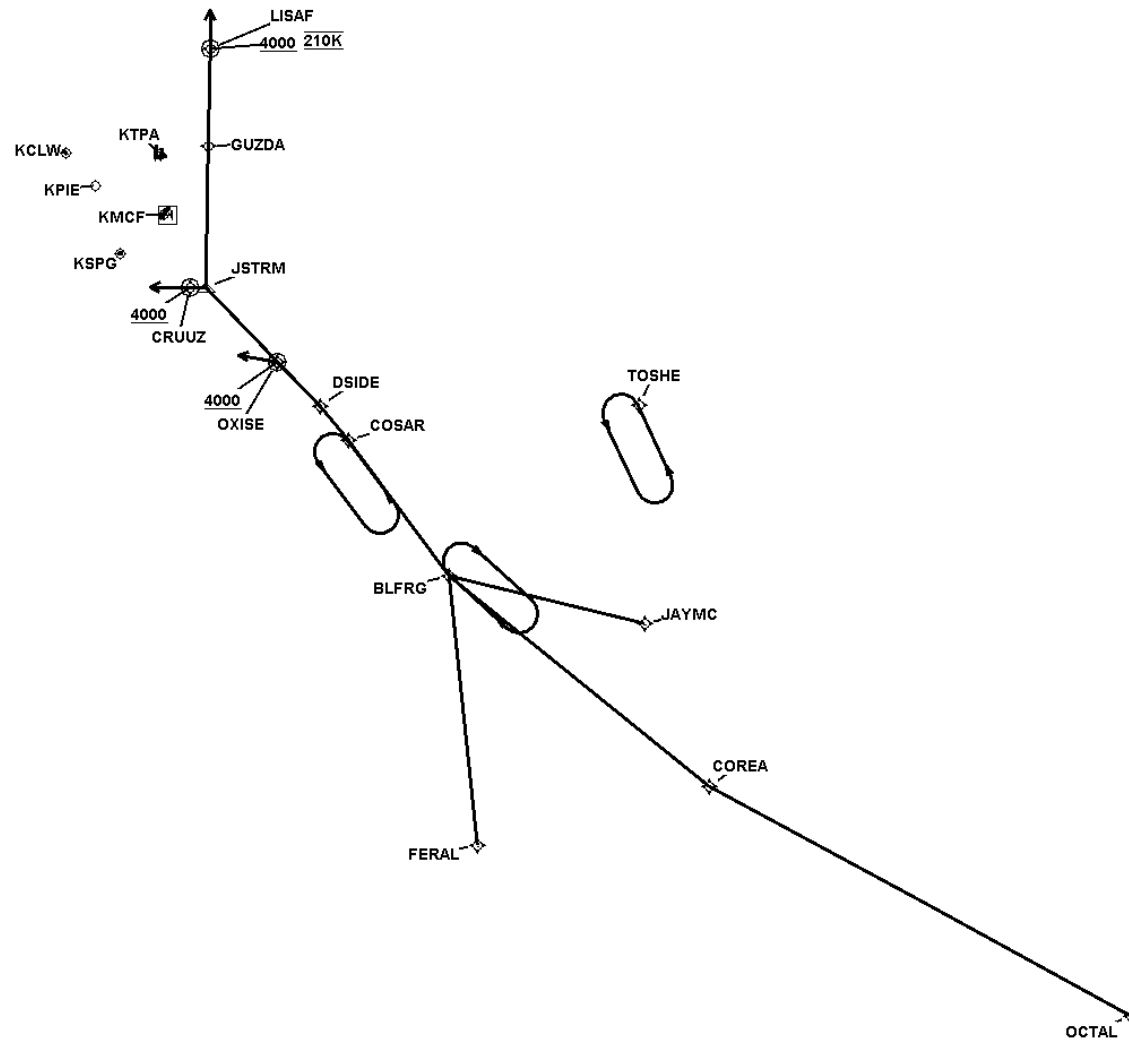
FEDERAL AVIATION ADMINISTRATION
FLIGHT STANDARDS SERVICE
STANDARD TERMINAL ARRIVAL (STAR)

Bearings, headings, courses, tracks and radials are magnetic. Elevations and altitudes are in feet, MSL. Altitudes are minimum altitudes unless otherwise indicated.
Ceilings are in feet above airport elevation. Distances are in nautical miles. Visibilities are in statute miles or feet RVR unless otherwise indicated.

Arrival Name	Number	STAR Computer Code	Superseded Number	Dated	Effective Date
BLFRG (RNAV)	THREE	BLFRG.BLFRG3	TWO	05/19/2022	20 Feb 2025

Graphic Depiction 2

NM	33	66	99	132	165	198
FT	200000	400000	600000	800000	1000000	1200000
1" = 131984 feet						



**FEDERAL AVIATION ADMINISTRATION
FLIGHT STANDARDS SERVICE
STAR (DATA RECORD)**

Arrival Name BLFRG (RNAV)		Number THREE		STAR Computer Code BLFRG.BLFRG3			Superseded Number TWO			Dated 05/19/2022	Effective Date 20 Feb 2025
<u>FIX/NAVAID</u>	<u>LAT/LONG</u>	<u>C</u>	<u>FO/FB</u>	<u>LEG TYPE</u>	<u>TC</u>	<u>DIST (NM)</u>	<u>ALTITUDE</u>	<u>SPEED</u>	<u>REMARKS</u>		
En Route Transition											
COREA	263808.96N / 0811252.29W	Y		IF					COREA.BLFRG3		
BLFRG	270458.21N / 0815018.76W	Y	FB	TF	308.75	42.85					
En Route Transition											
FERAL	263047.36N / 0814615.74W	Y		IF					FERAL.BLFRG3		
BLFRG	270458.21N / 0815018.76W	Y	FB	TF	353.95	34.27					
En Route Transition											
JAYMC	265851.00N / 0812208.00W	Y		IF					JAYMC.BLFRG3		
BLFRG	270458.21N / 0815018.76W	Y	FB	TF	283.74	25.89					
En Route Transition											
OCTAL	260901.92N / 0801211.60W	Y		IF					OCTAL.BLFRG3		
COREA	263808.96N / 0811252.29W	Y	FB	TF	298.27	61.74					
BLFRG	270458.21N / 0815018.76W	Y	FB	TF	308.75	42.85					
Common Route											
BLFRG	270458.21N / 0815018.76W	Y		IF					BLFRG.BLFRG3		
COSAR	272208.50N / 0820451.46W	Y	FB	TF	322.92	21.48					
DSIDE	272630.06N / 0820854.62W	Y	FB	TF	320.33	05.65					
Common Route											
BLFRG	270458.21N / 0815018.76W	Y		IF					BLFRG.BLFRG3		
COSAR	272208.50N / 0820451.46W	Y	FB	TF	322.92	21.48					
DSIDE	272630.06N / 0820854.62W	Y	FB	TF	320.33	05.65					
OXISE	273208.28N / 0821503.25W	Y	FO	TF	315.84	07.84	AT/ABOVE 4000				
KCLW,KMCF,KPIE, KSPG				FM	280.00						

FEDERAL AVIATION ADMINISTRATION
FLIGHT STANDARDS SERVICE
STAR (DATA RECORD)

Arrival Name BLFRG (RNAV)		Number THREE		STAR Computer Code BLFRG.BLFRG3			Superseded Number TWO		Dated 05/19/2022	Effective Date 20 Feb 2025
FIX/NAVAID	LAT/LONG	C	FO/FB	LEG TYPE	TC	DIST (NM)	ALTITUDE	SPEED	REMARKS	
Runway Transition										
DSIDE	272630.06N / 0820854.62W	Y		IF						
JSTRM	274130.57N / 0822521.07W	Y	FB	TF	315.75	20.92				
CRUUZ	274132.38N / 0822736.55W	Y	FO	TF	270.87	02.00	AT/ABOVE 4000			
KTPA:RWY 1L,RWY 1R,RWY 10				FM	270.87					
Runway Transition										
DSIDE	272630.06N / 0820854.62W	Y		IF						
JSTRM	274130.57N / 0822521.07W	Y	FB	TF	315.75	20.92				
GUZDA	275926.58N / 0822455.15W	Y	FB	TF	001.22	17.89				
LISAF	281148.36N / 0822437.17W	Y	FO	TF	001.23	12.33	AT/ABOVE 4000	AT 210K		
KTPA:RWY 19L,RWY 19R,RWY 28				FM	000.00					