

FEDERAL AVIATION ADMINISTRATION  
FLIGHT STANDARDS SERVICE  
STANDARD TERMINAL ARRIVAL (STAR)

Bearings, headings, courses, tracks and radials are magnetic. Elevations and altitudes are in feet, MSL. Altitudes are minimum altitudes unless otherwise indicated.  
Distances are in nautical miles (NM). Graphic depictions attached.

Arrival Name TBARR (RNAV)	Number THREE	STAR Computer Code TBARR.TBARR3	Superseded Number TWO	Dated 12/31/2020	Effective Date 7 OCT 21				
TRANSITION ROUTES:									
Transition Name	Transition Computer Codes	From FIX/NAVAID	To FIX/NAVAID	Course	Distance	MEA	MOCA	MAA	Crossing Altitudes / Fixes
BBRRO	BBRRO.TBARR3	BBRRO	BBRRO						AT/ABOVE FL270
			LIFTE	042.10	21.76	FL200			
			TBARR	042.43	24.85	FL200			BETWEEN FL200 AND FL220
GNDLA	GNDLA.TBARR3	GNDLA	GNDLA						
			NVVER	004.64	56.00	FL270			
			BBRRO	004.77	59.78	FL270			AT/ABOVE FL270
			LIFTE	042.10	21.76	FL200			
			TBARR	042.43	24.85	FL200			BETWEEN FL200 AND FL220
NVVER	NVVER.TBARR3	NVVER	NVVER						
			BBRRO	004.77	59.78	FL270			AT/ABOVE FL270
			LIFTE	042.10	21.76	FL200			
			TBARR	042.43	24.85	FL200			BETWEEN FL200 AND FL220
SHNPS	SHNPS.TBARR3	SHNPS	SHNPS						
			BBRRO	042.08	47.50	FL270			AT/ABOVE FL270
			LIFTE	042.10	21.76	FL200			
			TBARR	042.43	24.85	FL200			BETWEEN FL200 AND FL220
WUNZE	WUNZE.TBARR3	WUNZE	WUNZE					FL260	AT/BELOW FL260
			TBARR	057.66	78.00	FL200		FL260	BETWEEN FL200 AND FL220

**ARRIVAL ROUTE DESCRIPTION:**

FROM TBARR ON TRACK 042.98/13.00 TO CROSS MNARK BETWEEN 17000 AND FL210 AND AT 250 KIAS.

LANDING RWY 7, 8: FROM MNARK ON TRACK 032.96/13.00 TO CROSS SUMTT AT 14000, THEN ON TRACK 032.96. EXPECT RADAR VECTORS TO FINAL APPROACH COURSE.

LANDING RWY 16L/R: FROM MNARK ON TRACK 027.77/13.19 TO CROSS EOLUS BETWEEN 15000 AND 17000, THEN ON TRACK 027.38/19.60 TO CROSS EPPIC BETWEEN 13000 AND 15000 AND AT 240 KIAS, THEN ON TRACK 352.51/6.55 TO RDDVL, THEN ON TRACK 352.51/5.00 TO CROSS CLFFAT AT 11000 AND AT 210 KIAS, THEN ON TRACK 352.51. EXPECT RADAR VECTORS TO FINAL APPROACH COURSE.

LANDING RWY 17L/R: FROM MNARK ON TRACK 027.77/13.19 TO CROSS EOLUS BETWEEN 15000 AND 17000, THEN ON TRACK 038.45/20.23 TO CROSS ZATUT BETWEEN 13000 AND 15000 AND AT 240 KIAS, THEN ON TRACK 037.17/7.37 TO LOOOP, THEN ON TRACK 049.13/7.38 TO HUDPI, THEN ON TRACK 352.53/5.00 TO CROSS QWIKI AT 11000 AND AT 210 KIAS, THEN ON TRACK 352.53. EXPECT RADAR VECTORS TO FINAL APPROACH COURSE.

FEDERAL AVIATION ADMINISTRATION  
FLIGHT STANDARDS SERVICE  
STANDARD TERMINAL ARRIVAL (STAR)

Bearings, headings, courses, tracks and radials are magnetic. Elevations and altitudes are in feet, MSL. Altitudes are minimum altitudes unless otherwise indicated.  
Distances are in nautical miles (NM). Graphic depictions attached.

Arrival Name	Number	STAR Computer Code	Superseded Number	Dated	Effective Date
<b>TBARR (RNAV)</b>	<b>THREE</b>	<b>TBARR.TBARR3</b>	<b>TWO</b>	<b>12/31/2020</b>	<b>7 OCT 21</b>

LANDING RWY 25, 26: FROM MNARK ON TRACK 027.77/13.19 TO CROSS EOLUS BETWEEN 15000 AND 17000, THEN ON TRACK 038.45/20.23 TO CROSS ZATUT BETWEEN 13000 AND 15000 AND AT 240 KIAS, THEN ON TRACK 037.17/7.37 TO LOOOP, THEN ON TRACK 081.56/4.74 TO CROSS JIBAT AT 11000 AND AT 210 KIAS, THEN ON TRACK 081.56. EXPECT RADAR VECTORS TO FINAL APPROACH COURSE.

LANDING RWY 34L/R: FROM MNARK ON TRACK 073.29/11.73 TO CROSS BDIVN AT OR BELOW 15000, THEN ON TRACK 068.48/6.00 TO CROSS KUSHH AT 14000 AND AT 210 KIAS, THEN ON TRACK 063.97/4.40 TO CROSS LDORA AT 13000 AND AT 210 KIAS. EXPECT ILS OR LOC RWY 34L/R APPROACH.

LANDING RWY 35L/R: FROM MNARK ON TRACK 073.29/11.73 TO CROSS BDIVN AT OR BELOW 15000, THEN ON TRACK 068.48/6.00 TO CROSS KUSHH AT 14000 AND AT 210 KIAS, THEN ON TRACK 063.97/4.40 TO CROSS LDORA AT 13000 AND AT 210 KIAS. EXPECT ILS OR LOC RWY 35L/R APPROACH.

PROCEDURAL DATA NOTES:

NOTE: TURBOJET AIRCRAFT ONLY.

NOTE: TURBOJET AIRCRAFT DESCEND VIA MACH NUMBER UNTIL INTERCEPTING 280K. MAINTAIN 280K UNTIL SLOWED BY STAR.

NOTE: DENVER CENTER WILL ISSUE "DESCEND VIA" CLEARANCE AND LANDING DIRECTION.

NOTE: EXPECT RUNWAY ASSIGNMENT ON INITIAL CONTACT WITH DENVER TRACON.

NOTE: NVVER ENROUTE TRANSITION: DO NOT FILE – TO BE ASSIGNED BY ATC.

NOTE: BBRRO ENROUTE TRANSITION: DO NOT FILE – TO BE ASSIGNED BY ATC.

NOTE: LANDING NORTH SELECT RWY 34R TRANSITION.

NOTE: LANDING SOUTH SELECT RWY 16R TRANSITION.

NOTE: LANDING EAST SELECT RWY 7 TRANSITION.

NOTE: LANDING WEST SELECT RWY 26 TRANSITION.

PBN REQUIREMENT NOTES:

RNAV 1 - DME/DME/IRU OR GPS.

EQUIPMENT REQUIREMENT NOTES:

RADAR REQUIRED FOR NON-GPS EQUIPPED AIRCRAFT.

FIXES AND/OR HOLDING PATTERNS:

CHART CRUDD AND HOLDING AT CRUDD: HOLD SW, RT, 037.00 INBOUND, 12 NM LEGS.

CHART HOLDING AT LIFTE: HOLD SW, RT, 042.05 INBOUND, 12 NM LEGS.

CHART HOLDING AT MNARK: HOLD SW, LT, 042.98 INBOUND, 10 NM LEGS.

CHART HOLDING AT NVVER: HOLD S, LT, 004.64 INBOUND, 12 NM LEGS.

CHART HOLDING AT TBARR: HOLD SW, LT, 042.43 INBOUND, 12 NM LEGS.

CHART HOLDING AT WUNZE: HOLD SW, RT, 057.66 INBOUND, 12 NM LEGS.

COMMUNICATIONS:

CHART: DENVER APP CON

CHART: DENVER TOWER

AIRPORTS SERVED:

DENVER INTL, DENVER, CO (KDEN)

LOST COMMUNICATIONS PROCEDURE:

IN THE EVENT OF LOST COMMUNICATIONS PRIOR TO RUNWAY TRANSITION ASSIGNMENT, WHEN DEN IS LANDING SOUTH, EXECUTE THE ILS RWY 16R, WHEN DEN IS LANDING NORTH, EXECUTE THE ILS RWY 35L.

FEDERAL AVIATION ADMINISTRATION  
FLIGHT STANDARDS SERVICE  
STANDARD TERMINAL ARRIVAL (STAR)

Bearings, headings, courses, tracks and radials are magnetic. Elevations and altitudes are in feet, MSL. Altitudes are minimum altitudes unless otherwise indicated.  
Distances are in nautical miles (NM). Graphic depictions attached.

Arrival Name	Number	STAR Computer Code	Superseded Number	Dated	Effective Date
<b>TBARR (RNAV)</b>	<b>THREE</b>	<b>TBARR.TBARR3</b>	<b>TWO</b>	<b>12/31/2020</b>	<b>7 OCT 21</b>

REMARKS:

MEA'S FL200 AND ABOVE NEEDED TO MITIGATE CRITICAL DME'S AND INSURE ADEQUATE SIGNAL RECEPTION FOR DME/DME/IRU NAVIGATION

ADDITIONAL FLIGHT DATA:

DME/DME ASSESSMENT: SAT (RNP 2.0)  
REFERENCE MAGNETIC VARIATION = KDEN 08E/2015  
CHART AT LDORA TERMINUS: LDG KDEN RWYS 34 L/R AND 35 L/R  
CHART AT CLFFF TERMINUS: LDG KDEN RWYS 16 L/R  
CHART AT QWIKI TERMINUS: LDG KDEN RWYS 17 L/R  
CHART AT JIBAT TERMINUS: LDG KDEN RWYS 25 AND 26  
CHART AT SUMTT TERMINUS: LDG KDEN RWYS 7, 8

FLIGHT INSPECTED BY:

MATTHEW R BUFORD

Name

FICO

Organization

07/27/2021

Date

*Digitally signed by***DONALD H LANIER**

Signature

Jul 28, 2021

DEVELOPED BY:

Mark Phipps DEN Metroplex manager

Name

DENVER ARTCC

Organization

4/22/2021

Date

*Digitally signed by***DONALD H LANIER**

Signature

Jul 28, 2021

APPROVED BY:

LONNIE EVERHART

Name

AVJ-A430

Organization

Date

*Digitally signed by***DONALD H LANIER**

Signature

Jul 28, 2021

CHANGES:

1. RECONFIGURED TRANSITION FOR RWY 07, 08: ADDED ROUTING FOR FIX MLVVA; UPDATED TERMINUS DATA.
2. PROCEDURAL DATA NOTES: CHANGED NOTE FROM "NVVER ENROUTE TRANSITION IS ATC ASSIGNED ONLY--DO NOT FILE" TO "NOTE: NVVER ENROUTE TRANSITION: DO NOT FILE -- TO BE ASSIGNED BY ATC."
3. PROCEDURAL DATA NOTES: CHANGED NOTE FROM "BBRRO ENROUTE TRANSITION IS ATC ASSIGNED ONLY--DO NOT FILE." TO "NOTE: BBRRO ENROUTE TRANSITION: DO NOT FILE -- TO BE ASSIGNED BY ATC."
4. REFORMATTED RADAR REQUIRED, RNAV 1, DME/DME/IRU OR GPS REQUIRED NOTES TO CURRENT PBN & EQUIPMENT REQUIREMENT NOTES FORMAT.
5. CHANGED RESTRICTION AT TBARR FROM AT OR ABOVE FL200 TO 200B220.
6. ADDED CHART NOTE ABOUT MAINTAINING 280K AND LISTING LANDING DIRECTION AND RUNWAYS.

REASONS:

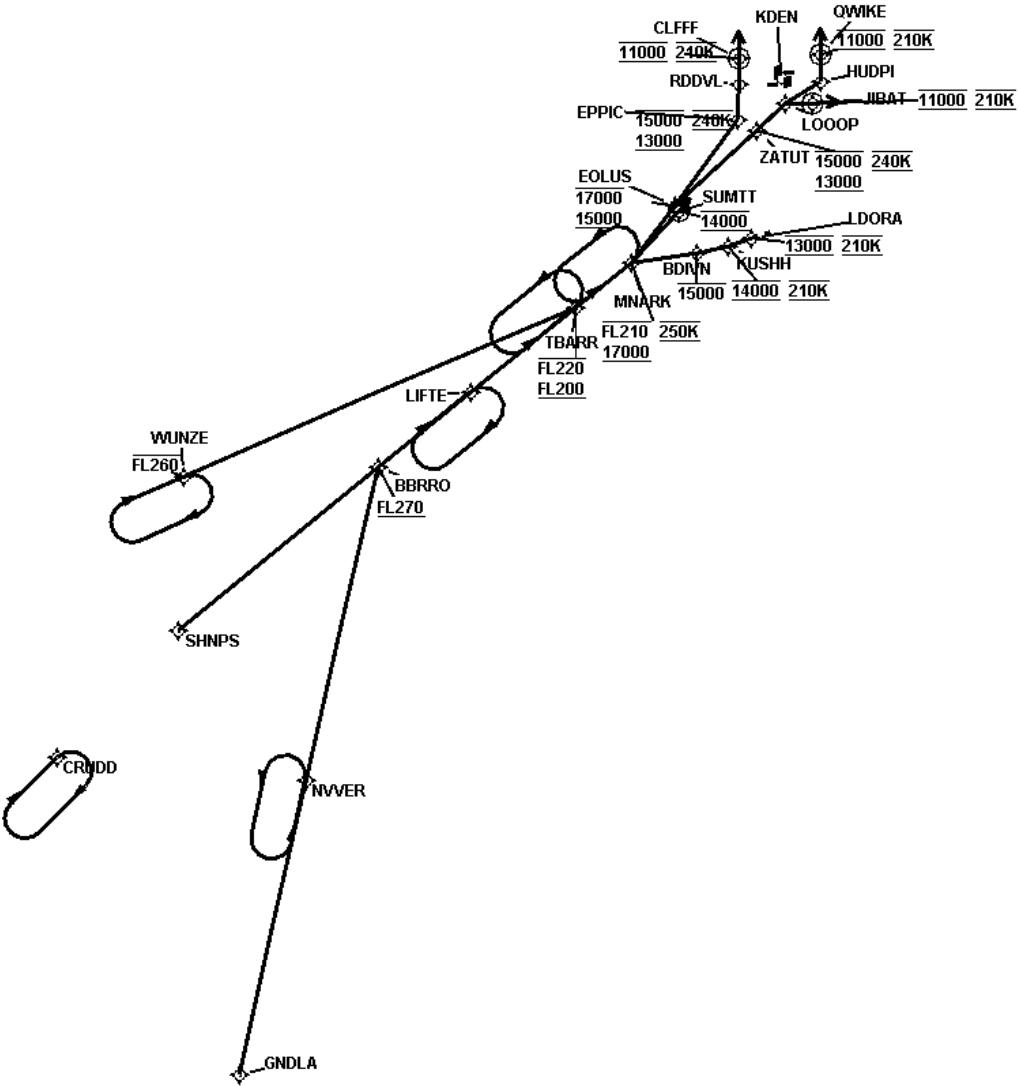
1. REQUIRED FOR AIRCRAFT TO BE IN THE CORRECT POSITION AND ALTITUDE FOR LANDING WEST TO OPTIMIZE CONVERGING LANDING OPERATIONS
2. CRITERIA -- IAW 8260.19I, 4-5-2.
3. CRITERIA -- IAW 8260.19I, 4-5-2.
4. CRITERIA -- IAW 8260.19I, 4-5-3.
5. ATC REQUIRED FRO TBO COMPLIANCE.
6. ATC REQUIRED FOR TBO COMPLINACE.

FEDERAL AVIATION ADMINISTRATION  
FLIGHT STANDARDS SERVICE  
STANDARD TERMINAL ARRIVAL (STAR)

Bearings, headings, courses, tracks and radials are magnetic. Elevations and altitudes are in feet, MSL. Altitudes are minimum altitudes unless otherwise indicated.  
Distances are in nautical miles (NM). Graphic depictions attached.

Arrival Name	Number	STAR Computer Code	Superseded Number	Dated	Effective Date
TBARR (RNAV)	THREE	TBARR.TBARR3	TWO	12/31/2020	7 OCT 21

Graphic Depiction 1



FEDERAL AVIATION ADMINISTRATION  
FLIGHT STANDARDS SERVICE  
STAR (DATA RECORD)

Arrival Name TBARR (RNAV)		Number THREE		STAR Computer Code TBARR.TBARR3		Superseded Number TWO		Dated 12/31/2020	Effective Date 7 OCT 21
FIX/NAVAID	LAT/LONG	C	FO/FB	LEG TYPE	TC	DIST (NM)	ALTITUDE	SPEED	REMARKS
En Route Transition									
BBRRO	383910.18N / 1061409.27W	Y		IF			AT/ABOVE FL270		BBRRO.TBARR3
LIFTE	385306.51N / 1055246.66W	Y	FB	TF	050.10	21.76			
TBARR	390854.64N / 1052809.30W	Y	FB	TF	050.43	24.85	FL200BFL220		
En Route Transition									
GNDLA	364607.74N / 1064627.69W	Y		IF					GNDLA.TBARR3
NVVER	374049.33N / 1063101.41W	Y	FB	TF	012.64	56.00			
BBRRO	383910.18N / 1061409.27W	Y	FB	TF	012.77	59.78	AT/ABOVE FL270		
LIFTE	385306.51N / 1055246.66W	Y	FB	TF	050.10	21.76			
TBARR	390854.64N / 1052809.30W	Y	FB	TF	050.43	24.85	FL200BFL220		
En Route Transition									
NVVER	374049.33N / 1063101.41W	Y		IF					NVVER.TBARR3
BBRRO	383910.18N / 1061409.27W	Y	FB	TF	012.77	59.78	AT/ABOVE FL270		
LIFTE	385306.51N / 1055246.66W	Y	FB	TF	050.10	21.76			
TBARR	390854.64N / 1052809.30W	Y	FB	TF	050.43	24.85	FL200BFL220		
En Route Transition									
SHNPS	380848.29N / 1070039.70W	Y		IF					SHNPS.TBARR3
BBRRO	383910.18N / 1061409.27W	Y	FB	TF	050.08	47.50	AT/ABOVE FL270		
LIFTE	385306.51N / 1055246.66W	Y	FB	TF	050.10	21.76			
TBARR	390854.64N / 1052809.30W	Y	FB	TF	050.43	24.85	FL200BFL220		
En Route Transition									
WUNZE	383719.43N / 1065930.44W	Y		IF			AT/BELOW FL260		WUNZE.TBARR3
TBARR	390854.64N / 1052809.30W	Y	FB	TF	065.66	78.00	FL200BFL220		

FEDERAL AVIATION ADMINISTRATION  
FLIGHT STANDARDS SERVICE  
STAR (DATA RECORD)

Arrival Name TBARR (RNAV)	Number THREE		STAR Computer Code TBARR.TBARR3		Superseded Number TWO		Dated 12/31/2020		Effective Date 7 OCT 21	
FIX/NAVAID	LAT/LONG	C	FO/FB	LEG TYPE	TC	DIST (NM)	ALTITUDE	SPEED	REMARKS	
Common Route										
TBARR	390854.64N / 1052809.30W	Y		IF			FL200BFL220		TBARR.TBARR3	
MNARK	391705.40N / 1051508.77W	Y	FB	TF	050.98	13.00	17000BFL210	AT 250K		
Runway Transition										
MNARK	391705.40N / 1051508.77W	Y		IF			17000BFL210	AT 250K		
SUMTT	392654.45N / 1050408.62W	Y	FO	TF	040.96	13.00	AT 14000			
KDEN:RWY 7,RWY 8				FM	040.96					
Runway Transition										
MNARK	391705.40N / 1051508.77W	Y		IF			17000BFL210	AT 250K		
EOLUS	392747.88N / 1050511.27W	Y	FB	TF	035.77	13.19	15000B17000			
EPPIC	394346.71N / 1045028.58W	Y	FB	TF	035.38	19.60	13000B15000	AT 240K		
RDDVL	395019.88N / 1045024.03W	Y	FB	TF	000.51	06.55				
CLFFF	395520.10N / 1045020.55W	Y	FO	TF	000.51	05.00	AT 11000	AT 210K		
KDEN:RWY 16L,RWY 16R				FM	000.51					
Runway Transition										
MNARK	391705.40N / 1051508.77W	Y		IF			17000BFL210	AT 250K		
EOLUS	392747.88N / 1050511.27W	Y	FB	TF	035.77	13.19	15000B17000			
ZATUT	394143.17N / 1044611.89W	Y	FB	TF	046.45	20.23	13000B15000	AT 240K		
LOOOP	394654.97N / 1043925.16W	Y	FB	TF	045.17	07.37				
HUDPI	395055.21N / 1043122.20W	Y	FB	TF	057.13	07.38				
QWIKI	395555.43N / 1043118.56W	Y	FO	TF	000.53	05.00	AT 11000	AT 210K		
KDEN:RWY 17L,RWY 17R				FM	000.53					
Runway Transition										
MNARK	391705.40N / 1051508.77W	Y		IF			17000BFL210	AT 250K		
EOLUS	392747.88N / 1050511.27W	Y	FB	TF	035.77	13.19	15000B17000			



FEDERAL AVIATION ADMINISTRATION  
FLIGHT STANDARDS SERVICE  
STAR (DATA RECORD)

Arrival Name <b>TBARR (RNAV)</b>	Number <b>THREE</b>	STAR Computer Code <b>TBARR.TBARR3</b>	Superseded Number <b>TWO</b>	Dated <b>12/31/2020</b>	Effective Date <b>7 OCT 21</b>
-------------------------------------	------------------------	---	---------------------------------	----------------------------	-----------------------------------

FIX/NAVAID	LAT/LONG	C	FO/FB	LEG TYPE	TC	DIST (NM)	ALTITUDE	SPEED	REMARKS
ZATUT	394143.17N / 1044611.89W	Y	FB	TF	046.45	20.23	13000B15000	AT 240K	
LOOOP	394654.97N / 1043925.16W	Y	FB	TF	045.17	07.37			
JIBAT	394657.00N / 1043316.27W	Y	FO	TF	089.56	04.74	AT 11000	AT 210K	
KDEN:RWY 25,RWY 26				FM	089.56				

**Runway Transition**

MNARK	391705.40N / 1051508.77W	Y		IF			17000BFL210	AT 250K	
BDIVN	391851.04N / 1050012.56W	Y	FB	TF	081.29	11.73	AT/BELOW 15000		
KUSHH	392014.98N / 1045241.70W	Y	FB	TF	076.48	06.00	AT 14000	AT 210K	
LDORA	392136.64N / 1044718.04W	Y	FB	TF	071.97	04.40	AT 13000	AT 210K	
KDEN:RWY 34L,RWY 34R									

**Runway Transition**

MNARK	391705.40N / 1051508.77W	Y		IF			17000BFL210	AT 250K	
BDIVN	391851.04N / 1050012.56W	Y	FB	TF	081.29	11.73	AT/BELOW 15000		
KUSHH	392014.98N / 1045241.70W	Y	FB	TF	076.48	06.00	AT 14000	AT 210K	
LDORA	392136.64N / 1044718.04W	Y	FB	TF	071.97	04.40	AT 13000	AT 210K	
KDEN:RWY 35L,RWY 35R									