

FEDERAL AVIATION ADMINISTRATION
FLIGHT STANDARDS SERVICE
STANDARD TERMINAL ARRIVAL (STAR)

Bearings, headings, courses, tracks and radials are magnetic. Elevations and altitudes are in feet, MSL. Altitudes are minimum altitudes unless otherwise indicated.
Ceilings are in feet above airport elevation. Distances are in nautical miles. Visibilities are in statute miles or feet RVR unless otherwise indicated.

Arrival Name	Number	STAR Computer Code	Superseded Number	Dated	Effective Date
DOOBI (RNAV)	THREE	DOOBI.DOOBI3	TWO	07/24/2014	12 JUN 2025

TRANSITION ROUTES:

Transition Name	Transition Computer Codes	From FIX/NAVAID	To FIX/NAVAID	Course	Distance	MEA	MOCA	MAA	Crossing Altitudes / Fixes
ALEXANDRIA	AEX.DOOBI3	AEX VORTAC	AEX VORTAC						
			JERNY	239.95	73.34	8000	1800		JERNY AT/ABOVE FL240
			BEATL	239.39	18.99	8000	1700		BEATL BETWEEN 17000 AND FL230
			DOOBI	239.13	18.61	8000	1600		DOOBI BETWEEN 15000 AND 17000
PLANB	PLANB.DOOBI3	PLANB	PLANB						
			EGULZ	189.01	45.04	8000	2000		EGULZ AT/ABOVE FL240
			TURNR	220.46	18.99	8000	1800		TURNR BETWEEN 17000 AND FL230
			DOOBI	218.87	18.72	8000	1600		DOOBI BETWEEN 15000 AND 17000
SWEUP	SWEUP.DOOBI3	SWEUP	SWEUP						
			EGULZ	221.00	91.83	8000	2000		EGULZ AT/ABOVE FL240
			TURNR	220.46	18.99	8000	1800		TURNR BETWEEN 17000 AND FL230
			DOOBI	218.87	18.72	8000	1600		DOOBI BETWEEN 15000 AND 17000

ARRIVAL ROUTE DESCRIPTION:

FROM DOOBI ON TRACK 216.62/14.95 TO CROSS HHART BETWEEN 10000 AND 13000 AND AT OR ABOVE 230 KIAS, THEN ON TRACK 214.77/8.00 TO CROSS BOPPR AT OR ABOVE 9000 AND AT 210 KIAS, THEN ON TRACK 214.74/4.09 TO CROSS ODISS AT OR ABOVE 8000 AND AT 210 KIAS, THEN ON TRACK 215.61/3.00 TO CROSS BOZZZ AT 8000 AND AT 210 KIAS. EXPECT ILS, RNAV, OR GLS RWY 26L APPROACH.

PBN REQUIREMENT NOTES:

RNAV 1 - DME/DME/IRU OR GPS

EQUIPMENT REQUIREMENT NOTES:

RADAR REQUIRED

PROCEDURAL DATA NOTES:

NOTE: FOR JET AND TURBOPROP AIRCRAFT CAPABLE OF 280 KIAS OR GREATER ONLY.

NOTE: EXPECT RUNWAY ASSIGNMENT FROM HOUSTON TRACON UPON INITIAL CONTACT.

NOTE: JET AIRCRAFT DESCEND VIA MACH NUMBER UNTIL 280 KIAS. IF UNABLE, ADVISE ATC.

FIXES AND/OR HOLDING PATTERNS:

CHART HOLDING AT DOOBI: HOLD NE, RT, 239.13 INBOUND, 10 NM LEGS.

CHART HOLDING AT EGULZ: HOLD NE, LT, 221.00 INBOUND, 16 NM LEGS.

CHART HOLDING AT JERNY: HOLD NE, RT, 239.95 INBOUND, 16 NM LEGS.

COMMUNICATIONS:

FEDERAL AVIATION ADMINISTRATION
FLIGHT STANDARDS SERVICE
STANDARD TERMINAL ARRIVAL (STAR)

Bearings, headings, courses, tracks and radials are magnetic. Elevations and altitudes are in feet, MSL. Altitudes are minimum altitudes unless otherwise indicated.
Ceilings are in feet above airport elevation. Distances are in nautical miles. Visibilities are in statute miles or feet RVR unless otherwise indicated.

Arrival Name	Number	STAR Computer Code	Superseded Number	Dated	Effective Date
DOOBI (RNAV)	THREE	DOOBI.DOOBI3	TWO	07/24/2014	12 JUN 2025

AIRPORTS SERVED:

<u>AIRPORT ID</u>	<u>CITY</u>	<u>STATE</u>
IAH	HOUSTON	TX

LOST COMMUNICATIONS PREFERENCES:

IN THE EVENT OF LOST COMMUNICATION PRIOR TO RUNWAY ASSIGNMENT, PROCEED ON THE ILS RWY 26L APPROACH.

REMARKS:

MEA ALTITUDES PER DME/DME/IRU EVALUATION.

ADDITIONAL FLIGHT DATA:

DME/DME ASSESSMENT: SAT (RNP 2.0)
MAG VAR: IAH 03E/2015
CHART AT BOZZZ TERMINUS: LDG IAH

FLIGHT INSPECTED BY:

ANTHONY D VALLERA

ORGANIZATION: DATE:

AJF 02/01/2025

Flight Inspected Signature:

Digitally signed by

CASIMIR L TABAKA

Feb 04, 2025

DEVELOPED BY:

CASIMIR TABAKA (BARBARA GORMAN)

AJV-A432 10/31/2024

Developed By Signature:

Digitally signed by

CASIMIR L TABAKA

Feb 04, 2025

Digitally signed by

CASIMIR L TABAKA

Feb 04, 2025

APPROVED BY:

CASIMIR TABAKA

AJV-A430

Approved By Signature:

CHANGES:

1. REMOVED SWB NAVAID FROM SAWMILL TRANSITION AND REPLACED WITH SWEUP WP; DISTANCE UPDATED FROM 91.84 TO 91.83.
2. UPDATED ARRIVAL ROUTE DESCRIPTION: FROM "TO CROSS HHART AT OR ABOVE 10000, AT OR BELOW 1300" TO "TO CROSS HHART BETWEEN 10000 TO 13000."
3. REMOVED MEAS FROM ARRIVAL ROUTE DESCRIPTION.
4. MOVED PROCEDURAL DATA NOTES: RADAR REQUIRED TO EQUIPMENT REQUIREMENT NOTES; RNAV 1, DME/DME/IRU OR GPS REQUIRED TO PBN REQUIREMENT NOTES.
5. CHANGED TURBOJET TO JET IN SPEED CAPABILITY NOTE.
6. REMOVED "SPEED RESTRICTION" AND CHANGED TURBOJET TO JET IN SPEED RESTRICTION NOTE.
7. ADDED HOLDING AT EGULZ.
8. UPDATED HOLDING PATTERN JERNY LEG LENGTH FROM 20NM TO 16NM.
9. MEAS AND MOCAS UPDATED.
10. ADDED TERMINUS INFO TO ADDITIONAL FLIGHT DATA.
11. REMOVED AIRPORT NAMES FROM AIRPORTS SERVED ALONG WITH K IDENT ON 17.1 FORM.
12. REMOVED CHART: HOUSTON APP CON.
13. ADDED REMARK: MEA ALTITUDES PER DME/DME/IRU EVALUATION.

FEDERAL AVIATION ADMINISTRATION
FLIGHT STANDARDS SERVICE
STANDARD TERMINAL ARRIVAL (STAR)

Bearings, headings, courses, tracks and radials are magnetic. Elevations and altitudes are in feet, MSL. Altitudes are minimum altitudes unless otherwise indicated.
Ceilings are in feet above airport elevation. Distances are in nautical miles. Visibilities are in statute miles or feet RVR unless otherwise indicated.

Arrival Name	Number	STAR Computer Code	Superseded Number	Dated	Effective Date
DOOBI (RNAV)	THREE	DOOBI.DOOBI3	TWO	07/24/2014	12 JUN 2025

REASONS:

1. SWB DECOMMISSIONED; SWEUP WP 60FT SOUTHWEST.
2. IAW 8260.19J 4-5-2 E.
3. NO LONGER A REQUIREMENT.
4. IAW 8260.19J 4-5-3.
5. IAW 8260.19J 4-5-12 D3(A).
6. IAW 8260.19J 4-5-2 F5.
7. ATC REQUEST.
8. IAW 8260.3F TABLE 16-10-1.
9. MEAS AMENDED TO LOWEST ALTITUDE THAT WILL PASS A DME/DME SCREEN AND MOCAS UPDATED TO CURRENT REQUIREMENTS.
10. 8260.19J 4-5-2 H(2).
11. PER 8260.19J DOCUMENTATION STANDARDS.
12. AUTOMATICALLY CHARTED IAW 8260.16J 4-5-12(F).
13. MEAS ARE HIGHER THAN MOCAS.

02/03/2025: THIS IS AN UPDATED COPY OF THE FORM DEVELOPED ON 10/31/2024.

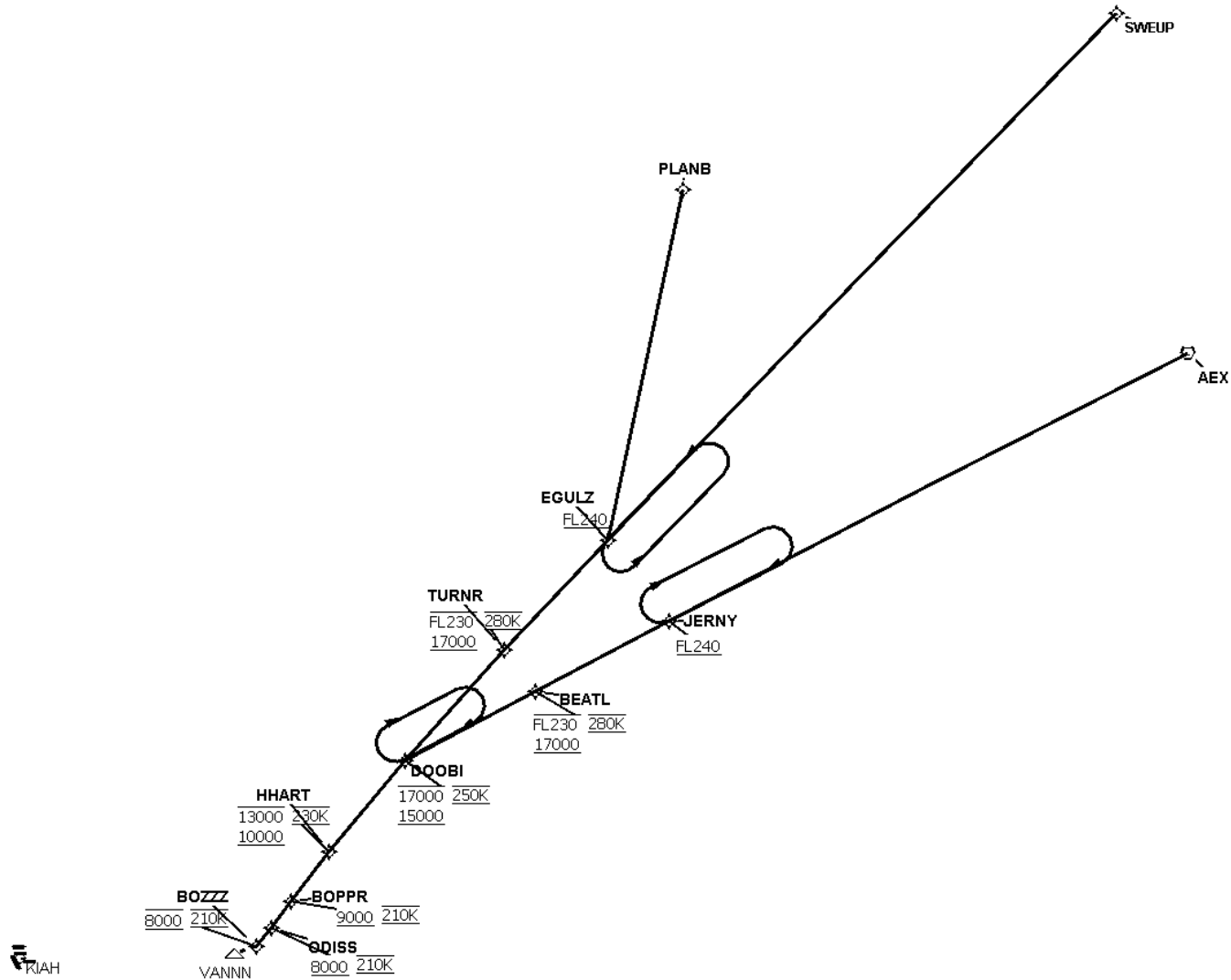
1. REMOVED NOTE: CORRESPONDING RNAV STAR IS SKNRD. EXPECT SKNRD WHEN IAH IS LANDING EAST.

FEDERAL AVIATION ADMINISTRATION
FLIGHT STANDARDS SERVICE
STANDARD TERMINAL ARRIVAL (STAR)

Bearings, headings, courses, tracks and radials are magnetic. Elevations and altitudes are in feet, MSL. Altitudes are minimum altitudes unless otherwise indicated.
Ceilings are in feet above airport elevation. Distances are in nautical miles. Visibilities are in statute miles or feet RVR unless otherwise indicated.

Arrival Name	Number	STAR Computer Code	Superseded Number	Dated	Effective Date
DOOBI (RNAV)	THREE	DOOBI.DOOBI3	TWO	07/24/2014	12 JUN 2025

Graphic Depiction 1



**FEDERAL AVIATION ADMINISTRATION
FLIGHT STANDARDS SERVICE
STAR (DATA RECORD)**

Arrival Name DOOBI (RNAV)		Number THREE		STAR Computer Code DOOBI.DOOBi3		Superseded Number TWO		Dated 07/24/2014	Effective Date 12 JUN 2025
FIX/NAVAID	LAT/LONG	C	FO/FB	LEG TYPE	TC	DIST (NM)	ALTITUDE	SPEED	REMARKS
En Route Transition									
AEX VORTAC	311524.23N / 0923003.50W	Y		IF					AEX.DOOBi3
JERNY	304136.21N / 0934549.24W	Y	FB	TF	242.95	73.34	JERNY AT/ABOVE FL240		
BEATL	303245.63N / 0940518.22W	Y	FB	TF	242.39	18.99	BEATL 17000BFL230	AT 280K	
DOOBI	302401.02N / 0942419.89W	Y	FB	TF	242.13	18.61	DOOBI 15000B17000	AT 250K	
En Route Transition									
PLANB	313559.26N / 0934351.54W	Y		IF					PLANB.DOOBi3
EGULZ	305149.81N / 0935444.92W	Y	FB	TF	192.01	45.04	EGULZ AT/ABOVE FL240		
TURNR	303800.16N / 0940953.12W	Y	FB	TF	223.46	18.99	TURNR 17000BFL230	AT 280K	
DOOBI	302401.02N / 0942419.89W	Y	FB	TF	221.87	18.72	DOOBI 15000B17000	AT 250K	
En Route Transition									
SWEUP	315823.07N / 0924038.00W	Y		IF					SWEUP.DOOBi3
EGULZ	305149.81N / 0935444.92W	Y	FB	TF	224.00	91.83	EGULZ AT/ABOVE FL240		
TURNR	303800.16N / 0940953.12W	Y	FB	TF	223.46	18.99	TURNR 17000BFL230	AT 280K	
DOOBI	302401.02N / 0942419.89W	Y	FB	TF	221.87	18.72	DOOBI 15000B17000	AT 250K	
Common Route									
DOOBI	302401.02N / 0942419.89W	Y		IF			DOOBI 15000B17000	AT 250K	DOOBI.DOOBi3
HHART	301228.11N / 0943519.84W	Y	FB	TF	219.62	14.95	HHART 10000B13000	AT/ABOVE 230K	
BOPPR	300607.50N / 0944058.92W	Y	FB	TF	217.77	08.00	BOPPR AT/ABOVE 9000	AT 210K	
ODISS	300253.00N / 0944351.92W	Y	FB	TF	217.74	04.09	ODISS AT/ABOVE 8000	AT 210K	
BOZZZ	300031.96N / 0944601.33W	Y	FB	TF	218.61	03.00	BOZZZ AT 8000	AT 210K	