

FEDERAL AVIATION ADMINISTRATION  
FLIGHT STANDARDS SERVICE  
STANDARD TERMINAL ARRIVAL (STAR)

Bearings, headings, courses, tracks and radials are magnetic. Elevations and altitudes are in feet, MSL. Altitudes are minimum altitudes unless otherwise indicated.  
Distances are in nautical miles (NM). Graphic depictions attached.

Arrival Name LUBBR (RNAV)	Number THREE	STAR Computer Code LUBBR.LUBBR3	Superseded Number TWO	Dated 12/02/2021	Effective Date 19 May 2022				
TRANSITION ROUTES:									
Transition Name	Transition Computer Codes	From FIX/NAVAID	To FIX/NAVAID	Course	Distance	MEA	MOCA	MAA	Crossing Altitudes / Fixes
KRVUR	KRVUR.LUBBR3	KRVUR	KRVUR						
			WNWUD	139.23	50.00	3000	2500		
			SSPAZ	178.59	34.07	3000	2500		
			BATTN	178.70	25.31	3000	2500		
			LUBBR	183.94	29.49	3000	1700		
KYYUU	KYYUU.LUBBR3	KYYUU	KYYUU						
			WNWUD	190.61	28.83	3000	2500		
			SSPAZ	178.59	34.07	3000	2500		
			BATTN	178.70	25.31	3000	2500		
			LUBBR	183.94	29.49	3000	1700		
SSPAZ	SSPAZ.LUBBR3	SSPAZ	SSPAZ						
			BATTN	178.70	25.31	3000	2500		
			LUBBR	183.94	29.49	3000	1700		

ARRIVAL ROUTE DESCRIPTION:

KSRQ: FROM LUBBR ON TRACK 177.79/11.56 TO ZEBON, THEN ON TRACK 177.21/9.84 TO RUNNE, THEN ON TRACK 177.47/12.35 TO BREKR.

LANDING KSRQ RWY 14: FROM BREKR ON TRACK 211.16/23.17 TO WUDDY, THEN ON TRACK 226.28/12.88 TO LYFIE, THEN ON TRACK 273.29/14.59 TO CROSS RUTAE AT OR ABOVE 3000, THEN ON HEADING 230.00 OR AS ASSIGNED BY ATC. EXPECT RADAR VECTORS TO FINAL APPROACH COURSE.

LANDING KSRQ RWY 32: FROM BREKR ON TRACK 211.16/23.17 TO WUDDY, THEN ON TRACK 226.28/12.88 TO LYFIE, THEN ON TRACK 175.30/17.70 TO CROSS MURDO AT OR ABOVE 3000, THEN ON HEADING 228.00 OR AS ASSIGNED BY ATC. EXPECT RADAR VECTORS TO FINAL APPROACH COURSE.

LANDING FA54: FROM LUBBR ON TRACK 177.79/11.56 TO ZEBON, THEN ON TRACK 177.21/9.84 TO RUNNE, THEN ON TRACK 177.47/12.35 TO BREKR, THEN ON TRACK 211.16/23.17 TO WUDDY, THEN ON TRACK 226.28/12.88 TO LYFIE, THEN ON TRACK 173.39/26.49 TO CROSS ROSTY AT OR ABOVE 3000, THEN ON HEADING 180.00 OR AS ASSIGNED BY ATC. EXPECT RADAR VECTORS TO FINAL APPROACH COURSE.

LANDING KLAL: FROM LUBBR ON TRACK 177.79/11.56 TO ZEBON, THEN ON TRACK 177.35/15.16 TO CROSS ZEPHR AT OR ABOVE 3000, THEN ON TRACK 177.35. EXPECT RADAR VECTORS TO FINAL APPROACH COURSE.

LANDING KPGD: FROM LUBBR ON TRACK 177.79/11.56 TO ZEBON, THEN ON TRACK 177.21/9.84 TO RUNNE, THEN ON TRACK 177.47/12.35 TO BREKR, THEN ON TRACK 211.16/23.17 TO WUDDY, THEN ON TRACK 226.28/12.88 TO LYFIE, THEN ON TRACK 173.39/26.49 TO CROSS ROSTY AT OR ABOVE 3000, THEN ON HEADING 150.00 OR AS ASSIGNED BY ATC. EXPECT RADAR VECTORS TO FINAL APPROACH COURSE.

LANDING KVNC: FROM LUBBR ON TRACK 177.52/21.40 TO RUNNE, THEN ON TRACK 177.47/12.35 TO BREKR, THEN ON TRACK 211.16/23.17 TO WUDDY, THEN ON TRACK 226.28/12.88 TO LYFIE, THEN ON TRACK 173.39/26.49 TO CROSS ROSTY AT OR ABOVE 3000, THEN ON HEADING 240.00 OR AS ASSIGNED BY ATC. EXPECT RADAR VECTORS TO FINAL APPROACH COURSE.

PBN REQUIREMENT NOTES

RNAV 1 - DME/DME/IRU OR GPS

EQUIPMENT REQUIREMENT NOTES

RADAR REQUIRED



FEDERAL AVIATION ADMINISTRATION  
FLIGHT STANDARDS SERVICE  
STANDARD TERMINAL ARRIVAL (STAR)

Bearings, headings, courses, tracks and radials are magnetic. Elevations and altitudes are in feet, MSL. Altitudes are minimum altitudes unless otherwise indicated.  
Distances are in nautical miles (NM). Graphic depictions attached.

Arrival Name	Number	STAR Computer Code	Superseded Number	Dated	Effective Date
<b>LUBBR (RNAV)</b>	<b>THREE</b>	<b>LUBBR.LUBBR3</b>	<b>TWO</b>	<b>12/02/2021</b>	<b>19 May 2022</b>

PROCEDURAL DATA NOTES:

NOTE: JET and TURBOPROP AIRCRAFT ONLY.

NOTE: KRVUR TRANSITION ATC ASSIGNED ONLY.

NOTE: SSPAZ TRANSITION ATC ASSIGNED ONLY.

FIXES AND/OR HOLDING PATTERNS:

CHART HOLDING AT LUBBR: HOLD N, RT, 183.94 INBOUND, 8 NM LEGS.

COMMUNICATIONS:

CHART: TAMPA APP CON

AIRPORTS SERVED:

SARASOTA/BRADENTON INTL, SARASOTA/BRADENTON, FL (KSRQ)

LAKELAND LINDER INTL, LAKELAND, FL (KLAL)

PUNTA GORDA, PUNTA GORDA, FL (KPGD)

VENICE MUNI, VENICE, FL (KVNC)

CORAL CREEK, PLACIDA, FL (FA54)

LOST COMMUNICATIONS PROCEDURE:

REMARKS:

THE ENVIRONMENTAL REVIEW UNDER ORDER 1050.1 (LATEST EDITION) AND THE NOISE SCREENING HAVE BEEN ACCOMPLISHED.

ADDITIONAL FLIGHT DATA:

DME/DME ASSESSMENT: SAT (RNP 2.0)

REFERENCE MAGNETIC VARIATION = KSRQ 05W/2010

CHART AT RUTAE TERMINUS: KSRQ LDG RWY 14

CHART AT MURDO TERMINUS: KSRQ LDG RWY 32

CHART AT ZEPHR TERMINUS: LDG KLAL

CHART AT ROSTY TERMINUS: LDG KPGD

CHART AT ROSTY TERMINUS: LDG KVNC

CHART AT ROSTY TERMINUS: LDG FA54



FEDERAL AVIATION ADMINISTRATION  
FLIGHT STANDARDS SERVICE  
STANDARD TERMINAL ARRIVAL (STAR)

Bearings, headings, courses, tracks and radials are magnetic. Elevations and altitudes are in feet, MSL. Altitudes are minimum altitudes unless otherwise indicated.  
Distances are in nautical miles (NM). Graphic depictions attached.

Arrival Name	Number	STAR Computer Code	Superseded Number	Dated	Effective Date
<b>LUBBR (RNAV)</b>	<b>THREE</b>	<b>LUBBR.LUBBR3</b>	<b>TWO</b>	<b>12/02/2021</b>	<b>19 May 2022</b>
<b>FLIGHT INSPECTED BY:</b>					
GARY BELL	FPO	03/16/2022	Digitally signed by <b>DONALD H LANIER</b>		
Name	Organization	Date	Mar 21, 2022 Signature		
<b>DEVELOPED BY:</b>					
VICKI TURNER	DESIGN IMPLEMENTATION MANAGER	10/23/2021	Digitally signed by <b>DONALD H LANIER</b>		
Name	AJV-22 Organization	Date	Mar 21, 2022 Signature		
<b>APPROVED BY:</b>					
LONNIE EVERHART	AJV-430		Digitally signed by <b>DONALD H LANIER</b>		
Name	Organization	Date	Mar 21, 2022 Signature		

**CHANGES:**

1. CHANGED: HEADING at MURDO to 228.00.
2. ADDED: KVNC ARRIVAL ROUTE ADDED.  
ADDED: FA54 ARRIVAL ROUTE ADDED.
3. REMOVED: NOTE: SHURE TRANSITION ATC ASSIGNED ONLY.
4. REMOVED: ALL EXPECT NOTES: NOTE: Landing LAL, Expect RADAR Vectors prior to ZEPHR. NOTE: Landing VNC and PGD, Expect RADAR Vectors prior to ROSTY.
5. DELETED: DREWW ENROUTE TRANSITION.
6. DELETED: SHURE ENROUTE TRANSITION.
7. ADDED: KRVUR ENROUTE TRANSITION, AND ADDED NOTE: ATC ASSIGNED ONLY.
8. ADDED: SSPAZ ENROUTE TRANSITION, AND ADDED NOTE: ATC ADDIGNED ONLY.
9. ADDED: KYYOU ENROUTE TRANSITION.
10. REMOVED "EXPECT" NOTES: NOTE: Landing LAL, Expect RADAR Vectors prior to ZEPHR. NOTE: Landing VNC and PGD, Expect RADAR Vectors prior to ROSTY.

**REASONS:**

1. ATC REQUEST to ALIGN TRANSITION WITH TEEGN1 (RNAV).
2. PROVIDE MORE EFFICIENT ROUTING FOR TRAFFIC LANDING KVNC AND KFA54.
3. TRANSITION deleted from procedure.
4. CHART NOTES CRITERIA does not allow "EXPECT" NOTES.
- 5-6. ATC REQUEST, replaced with new transitions.
- 7-9. Aligns with traffic flow and provides more efficiency.
10. CHART NOTE Criteria does not allow "EXPECT" Notes.

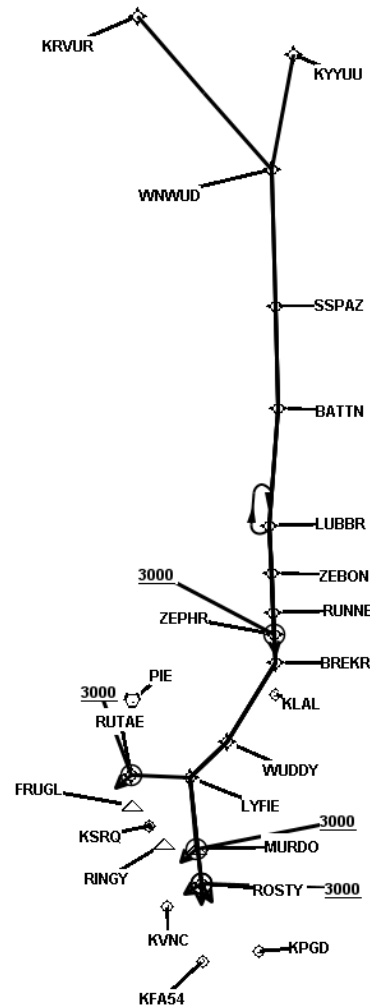
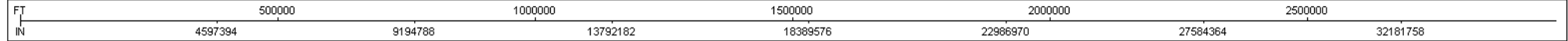
QUALITY  
16  
CHECKED

FEDERAL AVIATION ADMINISTRATION  
FLIGHT STANDARDS SERVICE  
STANDARD TERMINAL ARRIVAL (STAR)

Bearings, headings, courses, tracks and radials are magnetic. Elevations and altitudes are in feet, MSL. Altitudes are minimum altitudes unless otherwise indicated.  
Distances are in nautical miles (NM). Graphic depictions attached.

Arrival Name	Number	STAR Computer Code	Superseded Number	Dated	Effective Date
LUBBR (RNAV)	THREE	LUBBR.LUBBR3	TWO	12/02/2021	19 May 2022

Graphic Depiction 1

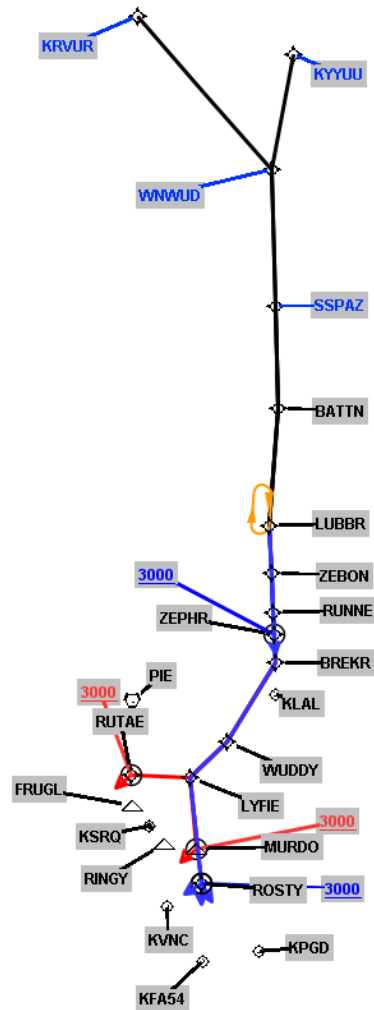


FEDERAL AVIATION ADMINISTRATION  
FLIGHT STANDARDS SERVICE  
STANDARD TERMINAL ARRIVAL (STAR)

Bearings, headings, courses, tracks and radials are magnetic. Elevations and altitudes are in feet, MSL. Altitudes are minimum altitudes unless otherwise indicated.  
Distances are in nautical miles (NM). Graphic depictions attached.

Arrival Name	Number	STAR Computer Code	Superseded Number	Dated	Effective Date
LUBBR (RNAV)	THREE	LUBBR.LUBBR3	TWO	12/02/2021	19 May 2022

## Graphic Depiction 2

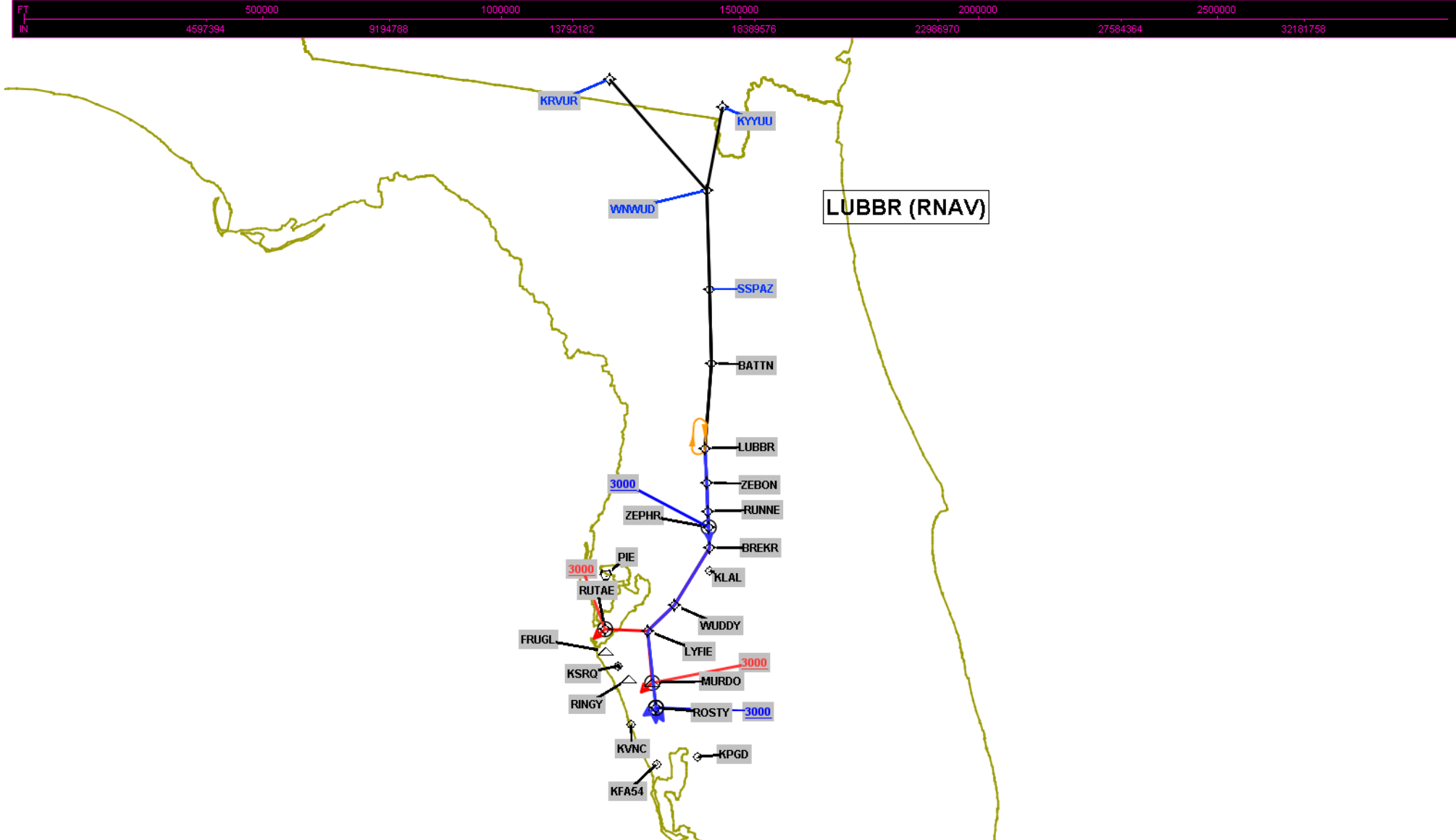


FEDERAL AVIATION ADMINISTRATION  
FLIGHT STANDARDS SERVICE  
STANDARD TERMINAL ARRIVAL (STAR)

Bearings, headings, courses, tracks and radials are magnetic. Elevations and altitudes are in feet, MSL. Altitudes are minimum altitudes unless otherwise indicated.  
Distances are in nautical miles (NM). Graphic depictions attached.

Arrival Name	Number	STAR Computer Code	Superseded Number	Dated	Effective Date
LUBBR (RNAV)	THREE	LUBBR.LUBBR3	TWO	12/02/2021	19 May 2022

Graphic Depiction 3



FEDERAL AVIATION ADMINISTRATION  
FLIGHT STANDARDS SERVICE  
STAR (DATA RECORD)

Arrival Name LUBBR (RNAV)		Number THREE		STAR Computer Code LUBBR.LUBBR3		Superseded Number TWO		Dated 12/02/2021	Effective Date 19 May 2022
FIX/NAVAID	LAT/LONG	C	FO/FB	LEG TYPE	TC	DIST (NM)	ALTITUDE	SPEED	REMARKS
En Route Transition									
KRVUR	304432.15N / 0825630.39W	Y		IF					KRVUR.LUBBR3
WNWUD	300928.11N / 0821510.74W	Y	FB	TF	134.23	50.00			
SSPAZ	293531.70N / 0821048.79W	Y	FB	TF	173.59	34.07			
BATTN	291018.32N / 0820738.49W	Y	FB	TF	173.70	25.31			
LUBBR	284044.37N / 0820701.41W	Y	FB	TF	178.94	29.49			
En Route Transition									
KYYUU	303813.83N / 0821155.76W	Y		IF					KYYUU.LUBBR3
WNWUD	300928.11N / 0821510.74W	Y	FB	TF	185.61	28.83			
SSPAZ	293531.70N / 0821048.79W	Y	FB	TF	173.59	34.07			
BATTN	291018.32N / 0820738.49W	Y	FB	TF	173.70	25.31			
LUBBR	284044.37N / 0820701.41W	Y	FB	TF	178.94	29.49			
En Route Transition									
SSPAZ	293531.70N / 0821048.79W	Y		IF					SSPAZ.LUBBR3
BATTN	291018.32N / 0820738.49W	Y	FB	TF	173.70	25.31			
LUBBR	284044.37N / 0820701.41W	Y	FB	TF	178.94	29.49			
Common Route									
LUBBR	284044.37N / 0820701.41W	Y		IF					LUBBR.LUBBR3
ZEBON	282914.36N / 0820522.65W	Y	FB	TF	172.79	11.56			
RUNNE	281927.95N / 0820351.94W	Y	FB	TF	172.21	09.84			
BREKR	280711.36N / 0820202.16W	Y	FB	TF	172.47	12.35			
Common Route									
LUBBR	284044.37N / 0820701.41W	Y		IF					LUBBR.LUBBR3
ZEBON	282914.36N / 0820522.65W	Y	FB	TF	172.79	11.56			
RUNNE	281927.95N / 0820351.94W	Y	FB	TF	172.21	09.84			
BREKR	280711.36N / 0820202.16W	Y	FB	TF	172.47	12.35			

QUALITY

16

CHECKED

QUALITY  
16  
CHECKED

FEDERAL AVIATION ADMINISTRATION  
FLIGHT STANDARDS SERVICE  
STAR (DATA RECORD)

Arrival Name LUBBR (RNAV)		Number THREE		STAR Computer Code LUBBR.LUBBR3		Superseded Number TWO		Dated 12/02/2021	Effective Date 19 May 2022
FIX/NAVAID	LAT/LONG	C	FO/FB	LEG TYPE	TC	DIST (NM)	ALTITUDE	SPEED	REMARKS
WUDDY	274619.74N / 0821333.09W	Y	FB	TF	206.16	23.17			
LYFIE	273637.18N / 0822306.80W	Y	FB	TF	221.28	12.88			
ROSTY	271036.09N / 0821708.21W	Y	FO	TF	168.39	26.49	AT/ABOVE 3000		
KFA54				VM	175.00				
Common Route									
LUBBR	284044.37N / 0820701.41W	Y		IF					LUBBR.LUBBR3
ZEBON	282914.36N / 0820522.65W	Y	FB	TF	172.79	11.56			
ZEPHR	281410.55N / 0820305.53W	Y	FO	TF	172.35	15.16	AT/ABOVE 3000		
KLAL				FM	172.35				
Common Route									
LUBBR	284044.37N / 0820701.41W	Y		IF					LUBBR.LUBBR3
ZEBON	282914.36N / 0820522.65W	Y	FB	TF	172.79	11.56			
RUNNE	281927.95N / 0820351.94W	Y	FB	TF	172.21	09.84			
BREKR	280711.36N / 0820202.16W	Y	FB	TF	172.47	12.35			
WUDDY	274619.74N / 0821333.09W	Y	FB	TF	206.16	23.17			
LYFIE	273637.18N / 0822306.80W	Y	FB	TF	221.28	12.88			
ROSTY	271036.09N / 0821708.21W	Y	FO	TF	168.39	26.49	AT/ABOVE 3000		
KPGD				VM	145.00				
Common Route									
LUBBR	284044.37N / 0820701.41W	Y		IF					LUBBR.LUBBR3
RUNNE	281927.95N / 0820351.94W	Y	FB	TF	172.52	21.40			
BREKR	280711.36N / 0820202.16W	Y	FB	TF	172.47	12.35			
WUDDY	274619.74N / 0821333.09W	Y	FB	TF	206.16	23.17			
LYFIE	273637.18N / 0822306.80W	Y	FB	TF	221.28	12.88			
ROSTY	271036.09N / 0821708.21W	Y	FO	TF	168.39	26.49	AT/ABOVE 3000		
KVNC				VM	235.00				

QUALITY

16

CHECKED

QUALITY  
16  
CHECKED



FEDERAL AVIATION ADMINISTRATION  
FLIGHT STANDARDS SERVICE  
STAR (DATA RECORD)

Arrival Name <b>LUBBR (RNAV)</b>	Number <b>THREE</b>	STAR Computer Code <b>LUBBR.LUBBR3</b>	Superseded Number <b>TWO</b>	Dated <b>12/02/2021</b>	Effective Date <b>19 May 2022</b>
-------------------------------------	------------------------	---	---------------------------------	----------------------------	--------------------------------------

FIX/NAVAID	LAT/LONG	C	FO/FB	LEG TYPE	TC	DIST (NM)	ALTITUDE	SPEED	REMARKS
<b>Runway Transition</b>									
BREKR	280711.36N / 0820202.16W	Y		IF					
WUDDY	274619.74N / 0821333.09W	Y	FB	TF	206.16	23.17			
LYFIE	273637.18N / 0822306.80W	Y	FB	TF	221.28	12.88			
RUTAE	273609.97N / 0823931.89W	Y	FO	TF	268.29	14.59	AT/ABOVE 3000		
KSRQ:RWY 14				VM	225.00				

<b>Runway Transition</b>									
BREKR	280711.36N / 0820202.16W	Y		IF					
WUDDY	274619.74N / 0821333.09W	Y	FB	TF	206.16	23.17			
LYFIE	273637.18N / 0822306.80W	Y	FB	TF	221.28	12.88			
MURDO	271907.45N / 0821945.91W	Y	FO	TF	170.30	17.70	AT/ABOVE 3000		
KSRQ:RWY 32				VM	223.00				

