

FEDERAL AVIATION ADMINISTRATION  
FLIGHT STANDARDS SERVICE  
STANDARD TERMINAL ARRIVAL (STAR)

Bearings, headings, courses, tracks and radials are magnetic. Elevations and altitudes are in feet, MSL. Altitudes are minimum altitudes unless otherwise indicated.  
Distances are in nautical miles (NM). Graphic depictions attached.

Arrival Name	Number	STAR Computer Code	Superseded Number	Dated	Effective Date
<b>FEBAD (RNAV)</b>	<b>ONE</b>	<b>FEBAD.FEBAD1</b>	<b>NONE</b>		<b>12 AUG 2021</b>

TRANSITION ROUTES:

Transition Name	Transition Computer Codes	From FIX/NAVAID	To FIX/NAVAID	Course	Distance	MEA	MOCA	MAA	Crossing Altitudes / Fixes
IKURE	IKURE.FEBAD1	IKURE	IKURE						
			FEBAD	093.24	10.00	5000	1300		

ARRIVAL ROUTE DESCRIPTION:

LANDING ALL AIRPORTS: FROM FEBAD ON TRACK 116.53/14.57 TO CROSS HUNIS AT 5000, THEN ON TRACK 116.53. EXPECT RADAR VECTORS TO FINAL APPROACH COURSE.

PROCEDURAL DATA NOTES:

NOTE: Props and Turboprops ONLY

NOTE: Landing All Airports: Expect RADAR Vectors prior to HUNIS.

PBN REQUIREMENT NOTES:

RNAV 1 – DME/DME/IRU OR GPS.

EQUIPMENT REQUIREMENT NOTES:

RADAR REQUIRED.

FIXES AND/OR HOLDING PATTERNS:

COMMUNICATIONS:

CHART: PALM BEACH APP CON

AIRPORTS SERVED:

PALM BEACH INTL, WEST PALM BEACH, FL (KPBI)

BOCA RATON, BOCA RATON, FL (KBCT)

NORTH PALM BEACH COUNTY GENERAL AVIATION, WEST PALM BEACH, FL (F45)

PALM BEACH COUNTY PARK, WEST PALM BEACH, FL (KLNA)

WITHAM FIELD, STUART, FL (KSUA)

LOST COMMUNICATIONS PROCEDURE:

REMARKS:

THE ENVIRONMENTAL REVIEW UNDER ORDER 1050.1 (LATEST EDITION) AND THE NOISE SCREENING HAVE BEEN ACCOMPLISHED.

ADDITIONAL FLIGHT DATA:

DME/DME ASSESSMENT: SAT (RNP 2.0)

REFERENCE MAGNETIC VARIATION = KPBI 06W/2010

CHART AT HUNIS TERMINUS: LDG KPBI/KLNA/KSUA/KBCT/F45

FEDERAL AVIATION ADMINISTRATION  
FLIGHT STANDARDS SERVICE  
STANDARD TERMINAL ARRIVAL (STAR)

Bearings, headings, courses, tracks and radials are magnetic. Elevations and altitudes are in feet, MSL. Altitudes are minimum altitudes unless otherwise indicated.  
Distances are in nautical miles (NM). Graphic depictions attached.

Arrival Name <b>FEBAD (RNAV)</b>	Number <b>ONE</b>	STAR Computer Code <b>FEBAD.FEBAD1</b>	Superseded Number <b>NONE</b>	Dated <i>Digitally signed by</i>	Effective Date <b>12 AUG 2021</b>
<b>FLIGHT INSPECTED BY:</b>					
JEFFREY ECKMAN Name		FICO Organization	05/24/2021 Date	ALLAN WILL Jun 14, 2021 Signature	
<b>DEVELOPED BY:</b>					
VICKI TURNER Name		DESIGN IMPLEMENTATION MANAGER AJV-22 Organization	02/23/2021 Date	ALLAN WILL Jun 14, 2021 Signature	
<b>APPROVED BY:</b>					
MARLON ROBINSON Name		AJV-A420 Organization	 Date	ALLAN WILL Jun 14, 2021 Signature	

CHANGES:

REASONS:

06/03/21: THIS IS AN UPDATED COPY OF THE FORM DEVELOPED ON 02/23/21.

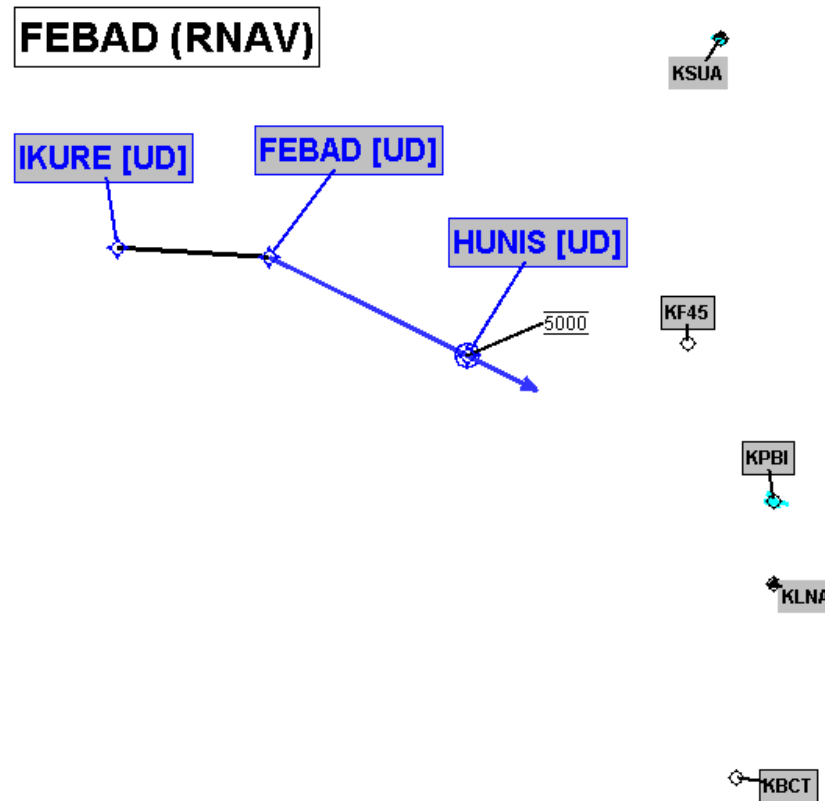
1. PROCEDURAL DATA NOTES SECTION: CHANGED NOTE: TURBOPROP AIRCRAFT ONLY TO NOTE: Props and Turboprops ONLY.

FEDERAL AVIATION ADMINISTRATION  
FLIGHT STANDARDS SERVICE  
STANDARD TERMINAL ARRIVAL (STAR)

Bearings, headings, courses, tracks and radials are magnetic. Elevations and altitudes are in feet, MSL. Altitudes are minimum altitudes unless otherwise indicated.  
Distances are in nautical miles (NM). Graphic depictions attached.

Arrival Name	Number	STAR Computer Code	Superseded Number	Dated	Effective Date
<b>FEBAD (RNAV)</b>	<b>ONE</b>	<b>FEBAD.FEBAD1</b>	<b>NONE</b>		<b>12 AUG 2021</b>

Graphic Depiction 1



FEDERAL AVIATION ADMINISTRATION  
FLIGHT STANDARDS SERVICE  
STAR (DATA RECORD)

Arrival Name FEBAD (RNAV)	Number ONE		STAR Computer Code FEBAD.FEBAD1		Superseded Number NONE		Dated		Effective Date <i>12 AUG 2021</i>
FIX/NAVAID	LAT/LONG	C	FO/FB	LEG TYPE	TC	DIST (NM)	ALTITUDE	SPEED	REMARKS
En Route Transition									
IKURE	265302.53N / 0805542.31W	Y		IF					IKURE.FEBAD1
FEBAD	265331.11N / 0804432.01W	Y	FB	TF	087.24	10.00			
Common Route									
FEBAD	265331.11N / 0804432.01W	Y		IF					FEBAD.FEBAD1
HUNIS	264822.78N / 0802916.88W	Y	FO	TF	110.53	14.57	AT 5000		
KBCT,F45,KLNA, KPBI,KSUA				FM	110.53				